



35cm x 20.3cm x 20cm

rally stomper™

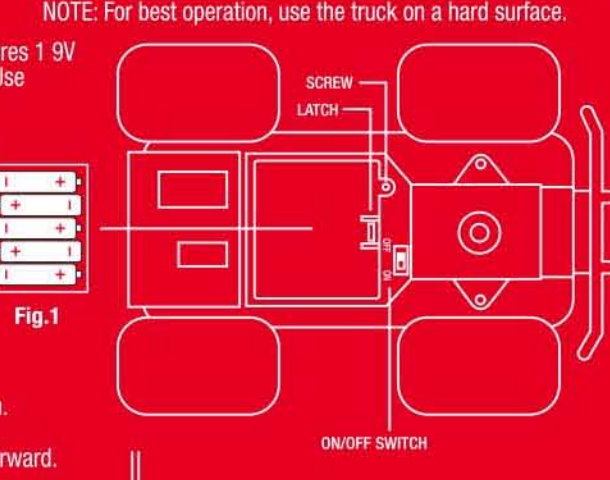
radio controlled all-terrain vehicle



BATTERY INSTALLATION

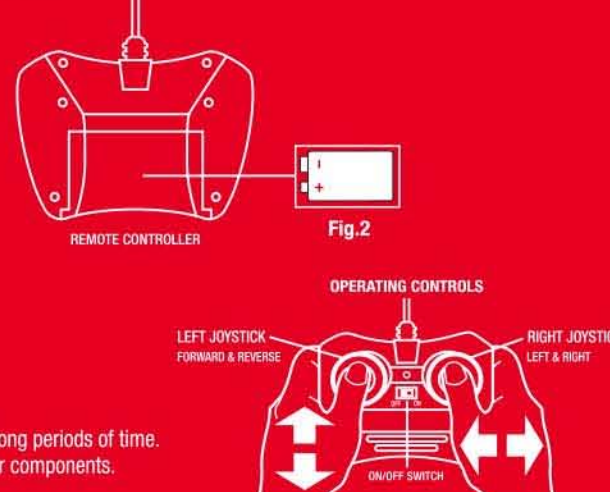
The truck requires 5 "AA" 1.5V batteries (not included). The controller requires 1 9V battery (included). When changing batteries, adult supervision is required. Use alkaline batteries for the best performance.

- Carefully remove items from the package.
- Locate the battery door on the bottom of the truck. Using a Phillips screwdriver, remove the screw.
- Pull the latch on the door to the left and lift up to access the battery compartment. Insert 5 "AA" batteries while observing the correct polarity (Fig. 1).
- Replace the battery compartment door.
- Slide the battery door on the back of the controller down to open.
- Insert 1 9V battery while observing the correct polarity (Fig. 2).
- Replace the battery compartment door.
- Switch both the truck and controller power switches to the "ON" position.
- Adjust the steering alignment lever located on the bottom of the truck (between front wheels) if the truck does not run straight when moving forward.



SAFETY PRECAUTIONS

- Do not operate during thunderstorms or rain.
- Avoid water, sand and snow when operating your truck.
- Do not submerge truck or controller in water.
- Never operate your truck on the street or highway.
- Adult supervision is recommended when operating this truck.
- Remove all batteries when not in use to avoid accidental operation.
- Never operate your truck in a confined or crowded area, and do not use people or animals as obstacles.
- Do not run your truck into furniture, objects or hard surfaces, as this will cause damage to both the object and the truck.
- Keep fingers, hair and loose clothing away from the tires, gears and motor while the truck is switched to "ON".
- Do not leave truck or controller near sources of heat or under direct sunlight for long periods of time.
- Do not leave truck or controller outside overnight. Dampness is harmful to interior components.



NOTE: This equipment has been tested and found to comply with the limits for a Class B digital device, pursuant to Part 15 of the FCC Rules. These limits are designed to provide reasonable protection against harmful interference in a residential installation. This equipment generates, uses, and can radiate radio frequency energy and, if not properly used and in accordance with the instructions, may cause harmful interference to radio communications.

However, there is no guarantee that interference will not occur in a particular installation. If this equipment does cause harmful interference to radio or television reception, which can be determined by turning the equipment off and on, the user is encouraged to try to correct the interference by one or more of the following measures:

- Reorient or relocate the receiving antenna.
- Increase the separation between the equipment and receiver.
- Connect the equipment into an outlet on a circuit different from that to which the receiver is connected.
- Consult the dealer or an experienced radio TV technician for help.

WARNING: Changes or modifications not expressly approved by the party responsible for compliance could void the user's authority to operate the equipment.

This device complies with Part 15 of the FCC Rules. Operation is subject to the following two conditions: (1) This device may not cause harmful interference, and (2) this device must accept any interference received, including interference that may cause undesired operation.

©2015 Mattel Toys, LLC. ©2015 The Platinum Collection by Shift® Rally Stomper and all associated logos are trademarks of Mattel Toys, LLC. All rights reserved. Distributed by Mattel Toys, LLC, El Segundo, CA 90245. China Patent No. ZL20130252603. For technical support, please visit www.mattel.com/rallystomper or call 1-800-276-2746. The names and images of the vehicles are protected by copyright for the registered, trademark, displayed, published or used for any purpose without the prior written permission. It is not permitted to alter, remove or reproduce any trademarks or copyright notice from this package.



AVAILABLE IN TWO FREQUENCIES FOR COMPETITIVE RACING!

rally stomper™
radio controlled all-terrain vehicle
four spring-loaded shocks for off-road action!



extra bright LED LIGHTS

AGES 6+
UL2015C

WARNING!
CHOKING HAZARD
Not suitable for children under 3 years.

BATTERY OPERATED PLAY VEHICLE
AGES 6 AND UP

AVAILABLE IN 2 FREQUENCIES!
BOX CONTAINS THE FOLLOWING FREQUENCIES:
 49 MHz
 27 MHz

extra bright LED LIGHTS

by shift®

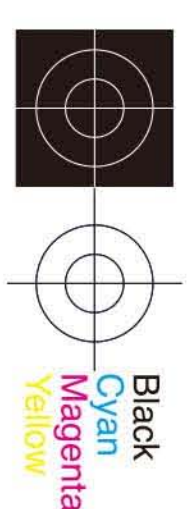
THE PLATINUM COLLECTION™

rally stomper™
radio controlled all-terrain vehicle
four spring-loaded shocks for off-road action!

fast-paced racing plus led lights for driving in the dark
full-function wireless remote control
sprung suspension and knobby tires for all-terrain racing
available in 2 frequencies for competitive racing

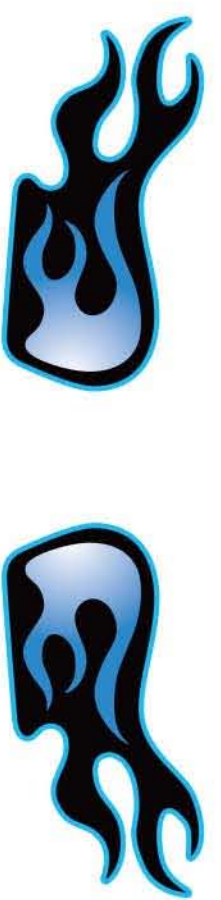


AVAILABLE IN TWO FREQUENCIES FOR COMPETITIVE RACING!



RALLY STOMPER

RC CONTROLLER STICKER



TRUCK DOOR STICKER (LEFT & RIGHT)



rally stomper™
radio controlled all-terrain vehicle
four spring-loaded shocks for off-road action!

THE PLATINUM COLLECTION™

fast-paced racing plus led lights for driving in the dark
full-function wireless remote control
spring loaded suspension and knobby tires for all-terrain racing
available in 2 frequencies for competitive racing

by shift®

©2015 Mattel Toys, LLC. ©2015 The Platinum Collection by Shift® Rally Stomper and all associated logos are trademarks of Mattel Toys, LLC. All rights reserved. Distributed by Mattel Toys, LLC, El Segundo, CA 90245. China Patent No. ZL20130252603. For technical support, please visit www.mattel.com/rallystomper or call 1-800-276-2746. The names and images of the vehicles are protected by copyright for the registered, trademark, displayed, published or used for any purpose without the prior written permission. It is not permitted to alter, remove or reproduce any trademarks or copyright notice from this package.