
SmartSensor Matrix

USER GUIDE

© 2013 Wavetronix LLC. All Rights Reserved.

Wavetronix, SmartSensor, Click, Command, and all associated product names and logos are trademarks of Wavetronix LLC. All other products or brand names as they appear are trademarks or registered trademarks of their respective holders.

Protected by US Patent Nos. 6,556,916; 6,693,557; 7,426,450; 7,427,930; 7,573,400; 7,889,097; 7,889,098; 7,924,170; 7,991,542; 8,248,272; Canadian Patent Nos. 2461411; 2434756; 2512689; and European Patent Nos. 1435036; 1438702; 1611458. Other US and international patents pending.

The Company shall not be liable for any errors contained herein or for any damages arising out of or related to this document or the information contained therein, even if the Company has been advised of the possibility of such damages.

This document is intended for informational and instructional purposes only. The Company reserves the right to make changes in the specifications and other information contained in this document without prior notification.

FCC Part 15 Compliance: The Wavetronix SmartSensor sensors comply with Part 15 of the Federal Communications Commission (FCC) rules which state that operation is subject to the following two conditions: (1) this device may not cause harmful interference, and (2) this device must accept any interference received, including interference that may cause undesirable operation. FCC compliance statements for applicable optional modules are to be found in the module specifications. Unauthorized changes or modifications not expressly approved by the party responsible for compliance with the FCC rules could void the user's authority to operate this equipment.

Disclaimer: The advertised detection accuracy of the Wavetronix SmartSensor sensors is based on both external and internal testing, as outlined in each product's specification document. Although our sensors are very accurate by industry standards, like all other sensor manufacturers we cannot guarantee perfection or assure that no errors will ever occur in any particular applications of our technology. Therefore, beyond the express Limited Warranty that accompanies each sensor sold by the company, we offer no additional representations, warranties, guarantees or remedies to our customers. It is recommended that purchasers and integrators evaluate the accuracy of each sensor to determine the acceptable margin of error for each application within their particular system(s).

Contents

Introduction		5
	SmartSensor Matrix Package 6 • Selecting a Mounting Location 7	
Part I	Installing the SmartSensor Matrix	
<hr/>		
Chapter 1	Installing the SmartSensor Matrix	13
	Sensor Mounting Guidelines 14 • Attaching the Mount Bracket to the Pole 15 • Attaching the Sensor to the Mount Bracket 16 • Aligning the Sensor to the Roadway 16 • Applying the Silicon Dielectric Compound 18 • Connecting the SmartSensor 6-conductor Cable 18 • Grounding the Sensor 19	
Chapter 2	Connecting Power and Surge Protection	21
	Mounting the Backplate 22 • Connecting AC Power 22 • Providing System Surge Protection 26 • Terminating Smart-Sensor 6-conductor Cables 28	
Chapter 3	Contact Closure Communication	31
	Using the Click 112/114 DIP Switches 32 • Using the Click 104 Rotary Switch 34 • Attaching and Programming the Click 112/114 35 • Attaching and Programming the Click 104 37 • Channel Mapping 39	

Part II Using SmartSensor Manager Matrix

Chapter 4	Installing SmartSensor Manager Matrix Installing SSMM 47 • Microsoft .NET Framework 49	45
Chapter 5	Communication Serial Connection 53 • Internet Connection 56 • Virtual Connection 58 • Viewing Connection Information 60 • Upgrading the Sensor's Embedded Software 62	51
Chapter 6	Sensor Settings General Sensor Settings 65 • Sensor Info Screen 67	65
Chapter 7	Lanes & Stop Bars Display Options 70 • Menu Bar 73 • Automatic Configuration 76 • Manual Configuration 77	69
Chapter 8	Zones & Channels Menu Bar 82 • Placing Zones 83 • Channel Type 84 • Mapping Zones to Channels 86 • Measuring Zones 89	81
Chapter 9	Verification Channel Indicators 92 • Verification Menu Bar 93	91
Chapter 10	Tools Backup/Restore 96 • Rack Cards Tools 97 • Sensor Self Tests 101	95
Appendix	Appendix A – Cable Connector Definitions 103 • Appendix B – Cable Lengths 105 • Appendix C – Click 221 User Reference Guide 106 • Appendix D – Click 600 Installation 107 • Appendix E – Matrix Extended Range 111	103

Introduction

In this chapter

- SmartSensor Matrix Package
- Selecting a Mounting Location

The Wavetronix SmartSensor Matrix™ is a stop bar presence detector designed for use at signalized intersections (see Figure I.1). The SmartSensor Matrix detects vehicles through the use of a 24.125 GHz (K band) operating radio frequency. Using what is classified as frequency modulated continuous wave (FMCW) radar, SmartSensor Matrix detects and reports vehicle presence in as many as 10 lanes simultaneously.



Figure I.1 - Wavetronix SmartSensor Matrix

SmartSensor Matrix is a first-of-its-kind radar stop bar detector with Radar Vision™. It delivers the reliability of radar and the simplicity of non-intrusive detection for stop bar presence detection. In many situations, the sensor is installed on the roadside in order to prevent the need for lane closures and traffic control. Once the unit is installed, the configu-

ration process is quick and easy. After installation, the sensor will require little or no on-site maintenance and can be remotely configured.

This user guide outlines the step-by-step process of installing and configuring the SmartSensor Matrix. Any questions about the information in this guide should be directed to Wavetronix or your distributor.

SmartSensor Matrix Package

A standard SmartSensor Matrix package may contain the following items:

- SmartSensor Matrix SS225 detector(s) with installed sensor backplate
- Sensor mounting kit(s)
- SmartSensor 6-conductor cable(s)
- Intersection preassembled backplate
- Click 112/114 detector rack card(s) with patch cable(s)
- Click 104 four-channel DIN rail contact closure module
- SmartSensor Manager Matrix (SSMM) software
- *SmartSensor Matrix User Guide*

Note

Instead of the intersection preassembled backplate, you may be using the Click 600 cabinet interface device, the preassembled 19-inch rack, or the segmented preassembled backplate. The coming chapters will note installation differences between these devices and the preassembled backplates where applicable.

SmartSensor Matrix system options include (see Figure I.2):

- **AC power conversion** - Provides reliable power for the sensors and backplate components. This option is normally recommended instead of the DC surge protection because it will not burden the existing DC power modules.
- **Remote IP connection** - Provides a way (via a Click 301 serial to Ethernet converter) to connect to the sensor from a remote location. The Click 301 is recommended for remote management.

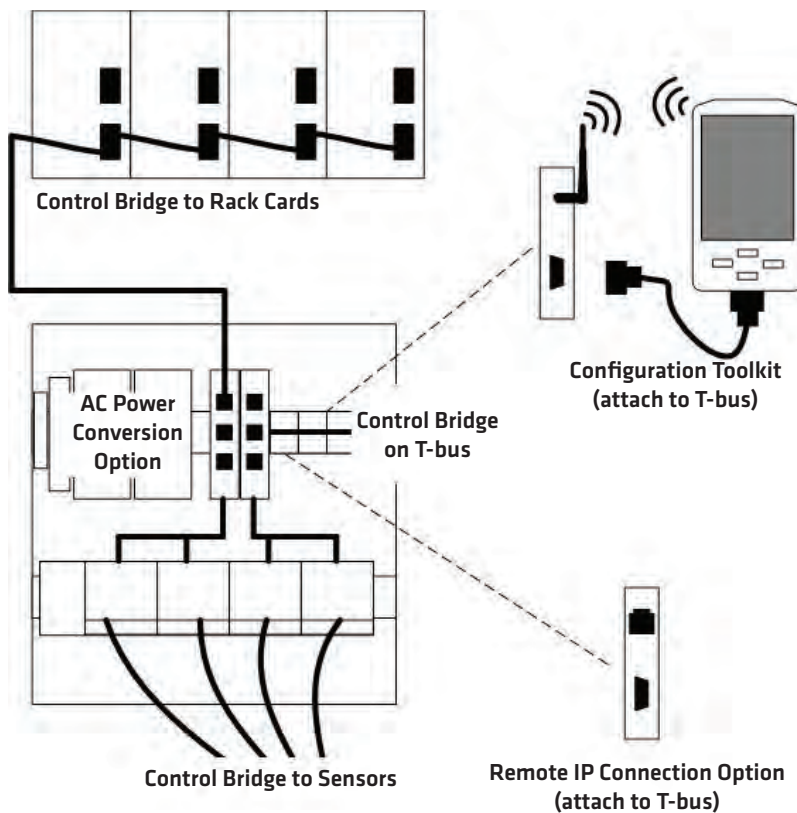


Figure 1.2 – SmartSensor Matrix System Options

Note

SmartSensor Matrix systems provide a control bridge to manage all connected SmartSensor and Click devices. The control bridge is completely separate from the dedicated channels used for communication of contact closure detection calls in real time.

Selecting a Mounting Location

Consider the following guidelines when selecting a mounting location for each SmartSensor Matrix:

- Corner radar** – The SmartSensor Matrix is a corner radar device with a panoramic 90°, 140-ft. (42.7-m) view (see Figure I.3). The sensor's mounting location should be selected so that all stop bar detection zones on an approach are within a 6–140-ft. (1.8–42.7-m) radial distance.

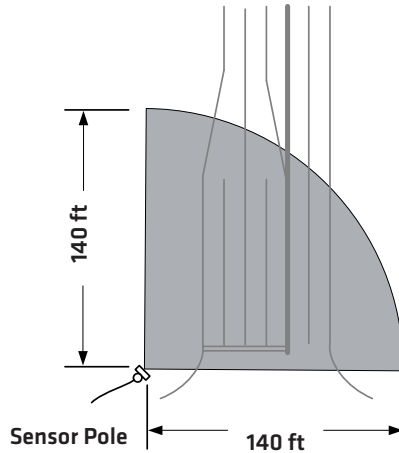


Figure I.3 - Corner Radar

- **Line of sight** - Position the sensor so that it will be able to detect the entire area of interest. Avoid occlusion by installing the sensor away from trees, signs and other roadside structures.
- **Detection coverage** - Position the sensor so that it will be able to reach all the specified stop bar detection zones. The sensor will often work better if you position it so that it tracks vehicles for several feet before the first zone in each lane. If the sensor has a view several feet beyond the stop bar, it is more likely to accurately detect queue dissipation.
- **Closest roadside** - Mount the sensor on the side of the road closest to the lanes of primary interest. Always mount the sensor high enough to prevent traffic from occluding approaching vehicles.
- **Mounting height** - A minimum height of 12 ft. (3.6 m) is recommended. Mounting the sensor higher will generally improve line of sight and decrease the possibility of occlusion.
- **Mounting offset** - A minimum offset of 6 ft. (1.8 m) to the first lane of interest is required.
- **Redundant detection** - It is possible to have multiple sensors monitoring the same approach. Multiple sensors are needed when zones are spread over more than 140 ft. (42.7 m).
- **Sensor proximity** - When multiple sensors are mounted at the same intersection, interference can be avoided by configuring each sensor to operate on a unique RF channel.
- **Departing lanes** - There is usually no need to view traffic in departing lanes or to configure departing lanes. However, if they are configured, then the stop bar should not be configured.
- **Suspended electrical cables** - The sensor is designed to work in the presence of suspended power lines and other electrical cables. However, these cables should be at least 10 ft. (3 m) away from the front of the sensor.
- **Neighboring structures and parallel walls** - The sensor should not be mounted with

signs or other flat surfaces directly behind it. This will help reduce multiple reflection paths from a single vehicle.

- **Cable length** – Make sure that you have sufficient homerun and sensor cabling. Cable runs as long as 500 ft. (152.4 m) can be achieved using 24 VDC operation and the system's native RS-485 communications. If your application requires a cable length longer than 500 ft. (152.4 m), contact Wavetronix Technical Services for assistance.

The SmartSensor Matrix should be mounted using one of the following options (see Figure I.4):

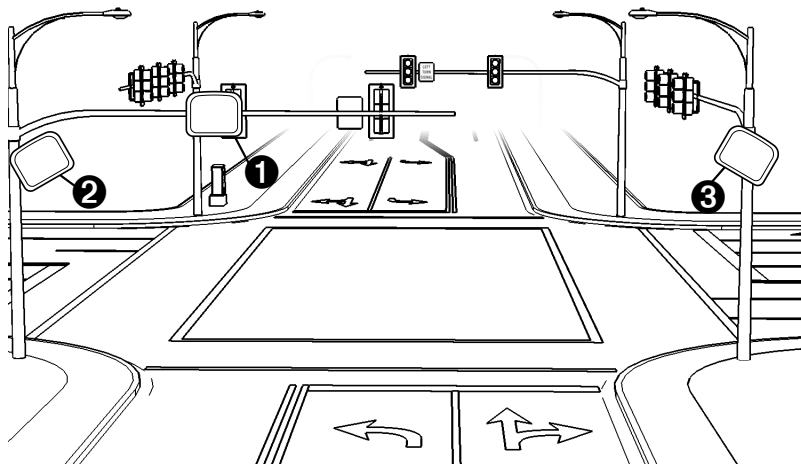


Figure I.4 - Mounting locations

- 1 **The back side of mast arm** – This location allows the sensor to be placed near the lanes of interest and may be the best location option for wide approaches. If you mount the sensor on the back side of a mast arm, mount it near the end of the arm to reduce the possibility of the mast arm or departing traffic occluding approaching vehicles.
- 2 **The far side of approach** – The sensor is usually mounted on a corner vertical mast pole or strain pole. If the sensor is mounted on a vertical pole with a mast arm, you can usually avoid occlusion by mounting the sensor away from or below the mast arm.
- 3 **The near side of approach** – This mounting location is typically best if detecting the left turn lane is less important. This location also allows you to mount the sensor high enough to avoid occlusion.

Other mounting locations may be possible if these are not available at your intersection. Contact Wavetronix Technical Services for assistance if you would like to use an alternative mounting location.

Part I

Installing the SmartSensor Matrix

Chapter 1 - Installing the SmartSensor Matrix

Chapter 2 - Connecting Power and Surge Protection

Chapter 3 - Contact Closure Communication

Installing the SmartSensor Matrix

1

In this chapter

- Sensor Mounting Guidelines
- Attaching the Mount Bracket to the Pole
- Attaching the Sensor to the Mount Bracket
- Aligning the Sensor to the Roadway
- Applying the Silicon Dielectric Compound
- Connecting the SmartSensor 6-conductor Cable
- Grounding the Sensor

The installation process includes attaching the mounting bracket to the pole; attaching the sensor to the mounting bracket; aligning the sensor; applying a silicon dielectric compound to the sensor connector; and connecting the SmartSensor 6-conductor cable to the sensor.

Caution

Do not attempt to service or repair this unit. This unit does not contain any components and/or parts serviceable in the field. Any attempt to open this unit, except as expressly written and directed by Wavetronix, will void the customer warranty. Wavetronix is not liable for any bodily harm or damage caused if service is attempted or if the back cover of the SmartSensor unit is opened. Refer all service questions to Wavetronix or an authorized distributor.

Warning

Use caution when installing any sensor on or around active roadways. Serious injury can result when installation is performed using methods that are not in accordance with authorized local safety policy and procedures. Always maintain an appropriate awareness of the traffic conditions and safety procedures as they relate to specific locations and installations.

Sensor Mounting Guidelines

The sensor is fairly insensitive to mounting height, but every site will vary based on lane configuration and the presence of barriers and structures in and around the detection area.

The following table will help you determine how high to mount the sensor (see Table 1.1). These figures are only suggestions, but a good rule to follow is—the farther away the first lane is to the sensor, the higher you will want to mount the sensor to avoid occlusion.

Closest Lane	Sensor Height
6–15 feet	12–25 feet
15–50 feet	15–25 feet
> 50 feet	25–60 feet

Table 1.1 – Suggested Mounting Guidelines

Note

In certain conditions, lanes that have stop bars or detection zones placed at extended range may show some loss in performance, even with a proper mounting height. This is more apparent at locations with many travel lanes or where detection zones are placed near the far edges of detection. If you have any questions regarding the use of SmartSensor Matrix at a particular location, please contact Wavetronix Technical Services or your authorized Wavetronix dealer for more information.

Use the following guidelines to determine the best mounting height, then place your sensor accordingly:

- In general, the sensor should be placed at a height of roughly 20 ft. (6.1 m), give or take 5 ft. (± 1.5 m).
- The maximum recommended mounting height for the SmartSensor Matrix is 60 ft. (18.2 m). The minimum is 12 ft. (3.6 m). Placing the sensor above or below these limits will adversely affect detection accuracy.

- Take into consideration the sensor's field of view, which reaches 140 ft. (42.7 m) from the sensor. Place the sensor so that the field of view covers all the areas of interest.
- The mast arm is frequently a good place to mount the sensor.
- The mounting position should have a clear view of the detection area. Poles, mast arms, signal heads, or other objects should not block the view of the detection area.
- Placing the sensor higher will result in less occlusion. Placing it lower could result in more occlusion. However, if the nearest detection area is less than about 20 ft. (6.1 m) away, the sensor may perform better with a lower mounting position.

Note

It is possible to mount the sensor lower than 12 ft. (3 m) in some scenarios. The sensor will continue to detect vehicles at lower heights, but missed detections due to occlusion may become more prevalent or problematic in lanes that are farther away from the sensor.

Attaching the Mount Bracket to the Pole

Before attaching the mount bracket to the pole, first make sure that your cables are long enough to reach the sensor height and to stretch across the distance from the sensor to the cabinet.

Follow the steps below to correctly attach the mount to the pole:

- 1 Insert the stainless steel straps through the slots in the mount bracket.
- 2 Position the mount on the pole so that the head of the mount is pointing toward the lanes of interest at about a 45° angle.
- 3 Tighten the strap screws.

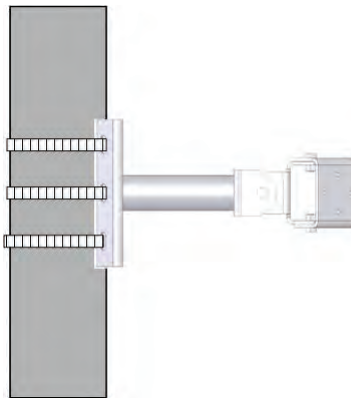


Figure 1.1 – Attach the Mount Bracket to the Pole

The sensor double-swivel mount may need to be adjusted later to fine-tune the alignment.

One swivel joint is used to pan the sensor field of view left or right and the other swivel joint is used to tilt the sensor down towards the roadway. If you are not using the double swivel-mount, make sure the pole straps are adjustable at this point in the installation process.

Attaching the Sensor to the Mount Bracket

Use the following steps to securely fasten the sensor to the mount bracket:

- 1 Align the bolts on the sensor's backplate with the holes in the mount bracket. The eight-pin connector receptacle on the bottom of the sensor should be pointing towards the ground.
- 2 Place the lock washers onto the bolts after the bolts are in the mount bracket holes.
- 3 Thread on the nuts and tighten (see Figure 1.2)

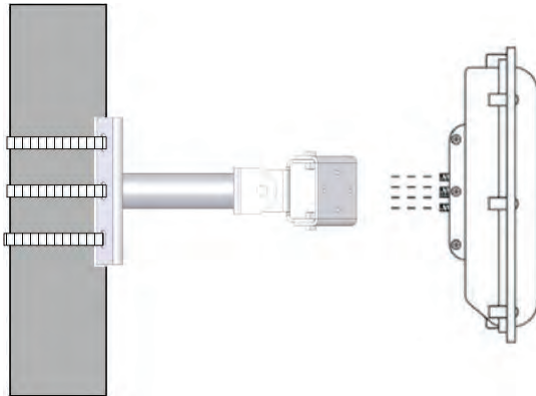


Figure 1.2 – Attach the Sensor to the Mount Bracket

Caution

Do not over-tighten the fasteners.

Aligning the Sensor to the Roadway

The sensor's beams fan out 45° to the left and 45° to the right, creating a 90° corner radar field of view. In most applications, you will want to position the corner radar so that its 90° footprint covers all lanes approaching the stop bar (see Figure 1.3).

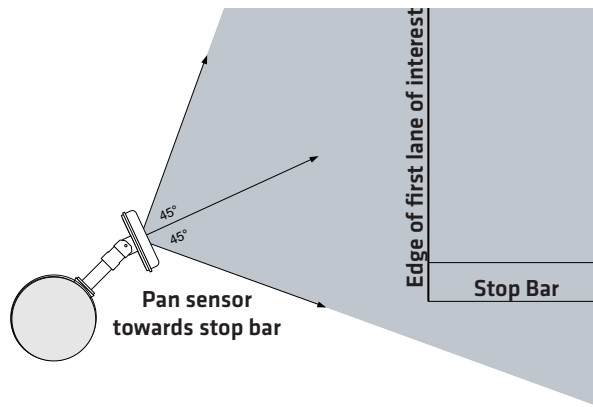


Figure 1.3 – Corner Radar Field of View Position

To visualize the extent of the sensor field of view, the 90° field of view is imprinted on the top and bottom of the sensor case. If more of a visual indicator is needed, then a square framing tool (e.g. rafter square) or other tool with a right angle can be held above the sensor. By looking down both edges of the tool, you can visualize the extent of the radar's coverage.

Usually the front edge of the sensor's field of view is aligned to provide coverage beyond the stop bar (see Figure 1.4). This allows you to place detection zones beyond the stop bar to detect those vehicles that do not stop at or behind the stop line and will also allow the sensor to see vehicles exiting queues. If the sensor pole is upstream from the stop bar, it is recommended to pan in the direction of the stop bar.

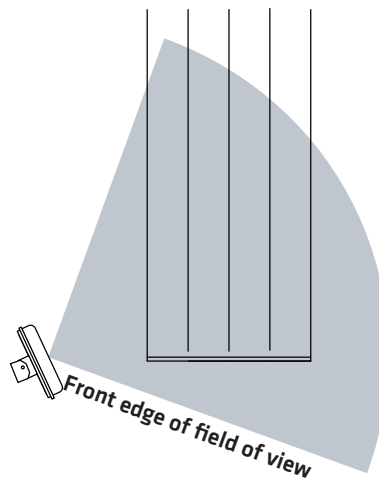


Figure 1.4 – Sensor Aligned by Rotating Towards the Stop Bar

Use the following steps to correctly align the SmartSensor Matrix:

- 1 Adjust the side-to-side angle so that the front edge of the field of view provides a view downstream of the stop bar.
- 2 Tilt the sensor down so it is aimed at the center of the lanes of interest.
- 3 If necessary, rotate the sensor so that the bottom edge of the sensor is parallel with the roadway. This is necessary where the intersection approach has a significant grade.

Note

To fully complete sensor alignment, you will need to connect to the Matrix sensor using SmartSensor Manager Matrix and verify that your alignment is detecting the vehicles in the lanes of interest (see Chapter 8).

Applying the Silicon Dielectric Compound

Use the following steps to correctly apply the silicon dielectric compound to the cable connector:

- 1 Tear the tab off of the tube of silicon dielectric compound.
- 2 Squeeze about 25% of the silicon onto the pins of the receptacle side of the connector at the base of the SmartSensor Matrix (see Figure 1.5). Be sure to wipe off any excess compound.



Figure 1.5 – Connector Receptacle (left) and Grounding Lug (right)

Connecting the SmartSensor 6-conductor Cable

The next step is to plug the SmartSensor 6-conductor cable into the connector. The sensor connector is keyed to ensure proper connection (see Figure 1.6); simply twist the plug end of the connector clockwise until you hear it click into place. To avoid undue movement from the wind, strap the 6-conductor cable to the pole or run it through a conduit, but leave a small amount of slack at the top of the cable to reduce cable strain. Route the cable from the sensor location back to the main traffic cabinet.



Figure 1.6 – Sensor 6-conductor Cable Connector

To set up your network in an orderly fashion, it is recommended that labeling be used on the service end of each SmartSensor 6-conductor cable. A convenient way to label the cables is to mark the last seven digits of the serial number on each sensor and the direction of traffic monitored (see Figure 1.7).



Figure 1.7 – Service End Labeling

Grounding the Sensor

The SmartSensor Matrix must now be grounded:

- 1 Connect a grounding wire to the grounding lug on the bottom of the sensor (see Figure 1.5).
- 2 Connect the other end of the grounding wire to the earth ground for the pole that the sensor is mounted on. Do not attempt to run the grounding wire back to the main traffic cabinet.

Connecting Power and Surge Protection

2

In this chapter

- Mounting the Backplate
- Connecting AC Power
- Providing System Surge Protection
- Terminating SmartSensor 6-conductor Cables

After installation, each SmartSensor Matrix will need to be integrated into the main traffic cabinet for power and surge protection. This chapter contains information on how to provide power and surge protection to a preassembled backplate that accommodates four SmartSensor Matrix sensors (one for each stop bar of a common four-approach intersection).

Note

Also available to use are the intersection preassembled 19-inch rack for server racks, the intersection segmented preassembled backplate for easier installation in traffic cabinets, and the Click 600 cabinet interface device (which combines all the functionality of the backplates in one module). Installation procedures for the rack and the segmented backplate will be very similar to the instructions that follow; installation procedures for the Click 600 can be found in Appendix D of this guide.

The standard four-approach preassembled backplate is 11 in. (28 cm) wide and 11.5 in. (29.2 cm) high. All wiring on the rack and backplates is done using stranded wires with wire ferrules for screw terminal connections (see Figure 2.1).

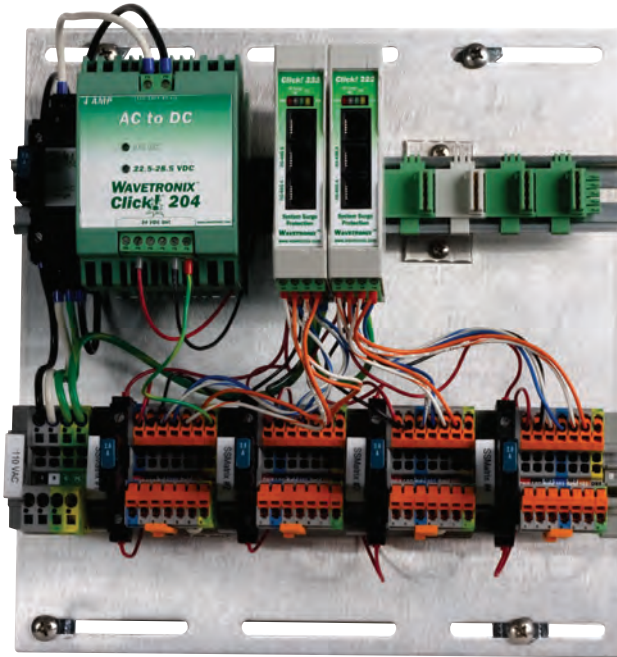


Figure 2.1 – Intersection Preassembled Backplate

Mounting the Backplate

Use the following steps to mount the backplate in the traffic cabinet:

- 1 Locate the area planned for mounting the backplate. The backplate can usually be mounted on the side panel of a NEMA-style cabinet.
- 2 Attach the backplate with the U-channel mounting screws.

Note

If you have a 330 series (170/2070 style cabinet) with a 19-inch EIA rack, please contact Wavetronix Technical Services for assistance. Wavetronix can provide modified backplates that attach to a 19-inch rack.

Connecting AC Power

Since SmartSensor Matrix operates on 10–28 VDC, the standard preassembled backplates provide an AC power conversion option. The backplate includes an AC to DC power converter, power surge and circuit breaker.

Warning

Make sure power to AC mains is disconnected while wiring the AC input. If your installation does not require AC power, you will need to use surplus DC power inside the traffic cabinet. In this case, Wavetronix recommends you use the Click 221 (8 A DC surge protector) to protect the backplate and SmartSensor Matrix units from DC surges. See Appendix C for information regarding the Click 221.

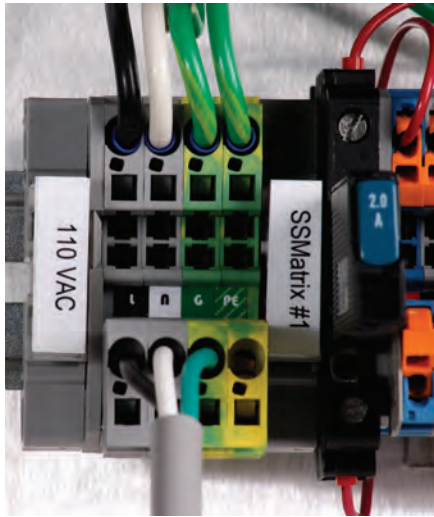


Figure 2.2 - Connecting AC Power to the Preassembled Backplate

Use the following steps to connect power to the AC terminal block on the bottom DIN rail (see Figure 2.2):

- 1 Connect a neutral wire (usually a white wire) to the bottom side of the terminal block labeled “N” for neutral.
- 2 Connect a ground wire (usually a green wire) to the bottom of the terminal block labeled “G” for ground. (see the Wiring Protective Earth Ground section below).
- 3 Connect a line wire (usually a black wire) to the bottom of the terminal block labeled “L” for line.
- 4 Turn on AC mains power.
- 5 Press the circuit breaker switch on the left side of the top DIN rail to switch power to the backplate. The switch is on if the button is below the level of the device housing; the switch is off if the button is raised above the surface of the housing.
- 6 Verify that DC power is properly regulated by making sure the DC OK LEDs are illuminated on the Click 201/202/204.

Caution

An authorized electrical technician should install the preassembled backplate. Persons other than authorized and approved electrical technicians should NOT attempt to connect the backplate to a power supply and/or traffic control cabinet, as there is a serious risk of electrical shock through unsafe handling of the power source. Extreme caution should be used when connecting the backplate to an active power supply.

The AC power conversion section of the backplate will come pre-wired as shown in Figure 2.3. The main three components of the AC power conversion section include:

- **Click 201/202/204 AC to DC converter** – A Click 201 provides 1 A of power and is capable of powering a single sensor; a Click 202 provides 2 A and can power two sensors; a Click 204 provides 4 A and can power four sensors.
- **Click 210 circuit breaker** – Interrupts power during overload conditions and provides a convenient way to turn power on and off for the entire system.
- **Click 230 AC surge protector** – Helps protect equipment from current surges on the power lines.

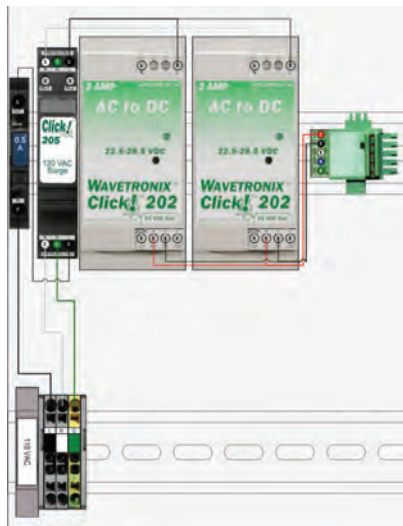


Figure 2.3 – AC Power Conversion

Wiring Protective Earth Ground

All connections are surge protected when the protective earth ground is wired to the PE terminal block on the backplate. Normally, the backplate should be mounted to the chassis of the cabinet to provide a ground path. It is strongly recommended that you provide a low impedance protective earth connection.

Follow the steps below to provide a low impedance protective earth connection:

- 1 Connect one end of a protective earth ground wire to the bottom of the PE terminal block. A 10 AWG stranded wire is recommended for protective earth ground connections and is also the largest that will fit in the terminal block.
- 2 Connect the other end of the protective earth ground wire to a protective earth screw terminal within the main traffic cabinet.

Controlling DC Power Distribution

The Click 210 circuit breakers provide a convenient way to turn power on or off for each sensor independently (see Figure 2.4). To enable or disable DC power to the backplate, switch the main circuit breaker (left side of upper DIN rail); to enable or disable DC power to an individual sensor, switch the individual circuit breaker (left side of each sensor's set of terminal blocks).

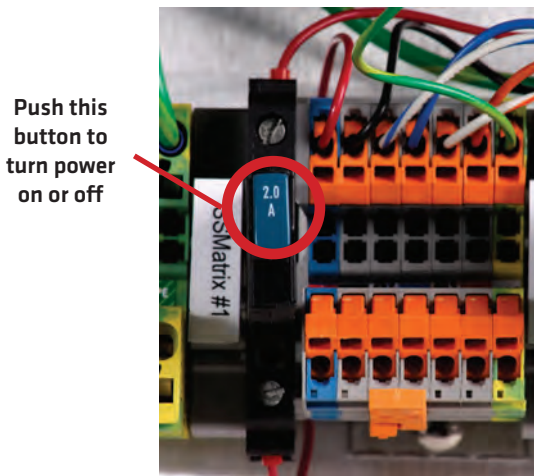


Figure 2.4 – DC Power Distribution

Note

The switch is ON when the switch button is level with the device housing; the switch is OFF when the switch button is raised above the housing.

The four-approach preassembled backplate has 24 VDC power wired from the output of the AC to DC converter into a 5-position screw terminal on the left side of the T-bus (see Figure 2.5). The green T-bus conducts DC power and RS-485 communications from the left to the right side of the modules; the gray T-bus conducts only DC power from the left to the right side of the modules.

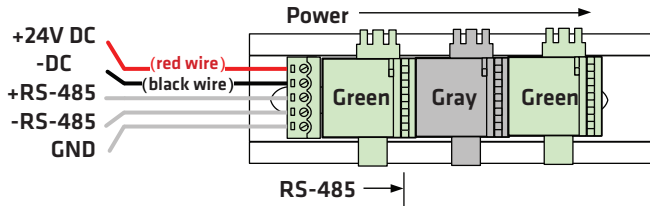


Figure 2.5 - T-bus Pinout Diagram

Providing System Surge Protection

The Click 222 system surge protector is designed to prevent electrical surges conducted along underground cables from damaging the cabinet equipment (see Figure 2.6).



Figure 2.6 - Click 222 Faceplate

Note

The SmartSensor Matrix has built-in surge protection and so there is no need to use a pole-mount box for surge protection on the sensor side of the cable. However, it is strongly recommended that the sensor be connected to a surge protection device in the main traffic cabinet. If you choose not to use surge protection in your main traffic cabinet, please contact Wavetronix Technical Services for assistance.

When a Click 222 is present, the power and RS-485 serial connections on the T-bus and faceplate are protected from surges on the incoming SmartSensor 6-conductor cables.

The Click 222 faceplate has four activity indicator LEDs:

- **PWR** - Indicates that the device has power.
- **DC Surge OK** - Indicates that DC surge protection is operational.

- **TD** - Indicates when data is transmitted over the T-bus or over the control bridge. This LED does not indicate data transmitted on the A or B ports.
- **RD** - Indicates when data is received over the T-bus or over the control bridge. This LED does not indicate data received on the A or B ports.

Note

If the DC Surge OK LED is not on when the Click 222 is powered, call Wavetronix Technical Services for assistance.

The Click 222 provides the following three independent serial connections:

- Topmost jack: control bridge
- Middle jack: dedicated communications for sensor 2 detection calls
- Lowest jack: dedicated communications for sensor 1 detection calls

The control bridge enables a multi-drop shared communication bus between all sensors connected to the backplate. This allows control of all SmartSensor Matrix sensors, rack cards and other connected Click devices. The remaining two serial connection ports provide communications to only one sensor each, as outlined above.

On a four-sensor preassembled backplate (see Figure 2.7):

- The sensor wired into the left-most terminal blocks will be connected to ports A and C on the Click 222 on the left. Port A is for detection calls and port C is connected to the control bridge.
- The sensor wired to the second set of terminal blocks will be wired to ports B and D on the Click 222 on the left. Port B is for detection calls and port D is connected to the control bridge.
- The sensor wired to the third set of terminal block from the left will be wired to ports A and C on the Click 222 on the right.
- The sensor wired to the right-most terminal block will be wired to ports B and D on the Click 222 on the right.

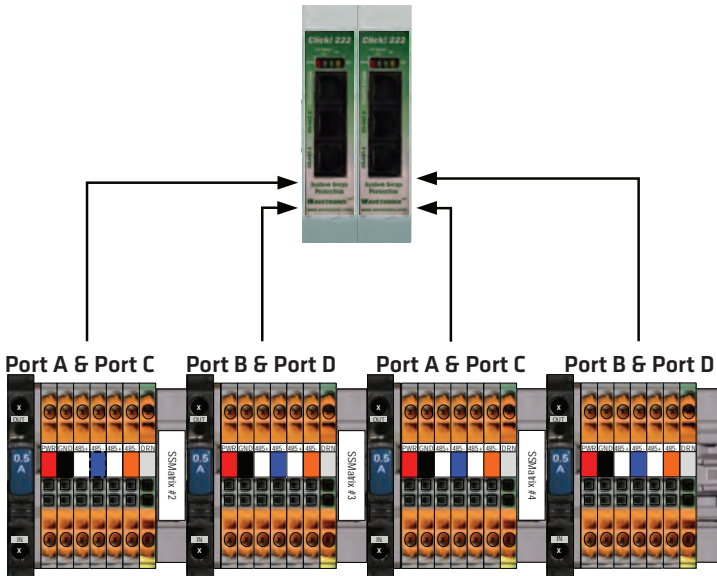


Figure 2.7 – Click 222 Ports A, B, C and D

Terminating SmartSensor 6-conductor Cables

The SmartSensor Matrix will receive power once each SmartSensor 6-conductor cable is correctly landed into the plug-in terminals on the backplate (see Figure 2.8 and Table 2.1). Each 6-conductor cable has one DC power wire pair, two RS-485 communication pairs, and a drain wire. The service end of the cable connects to plug-in terminals on the pre-assembled backplate (see Figure 2.8).

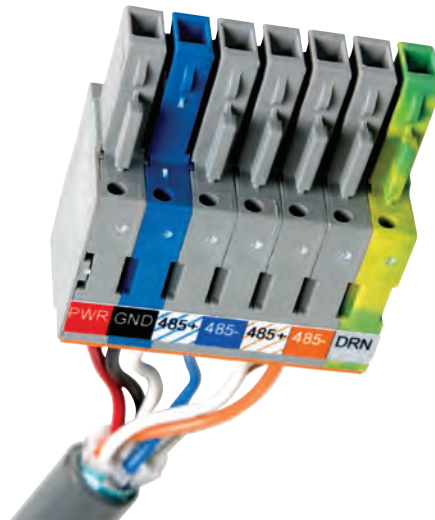


Figure 2.8 – Color Label on Plug-in Terminals

Note

Do not strip the service end of the cable until after it has been routed through conduit. The cable should be one continuous run without any splices.

Use the steps below to land the sensor cables:

- 1 After routing your SmartSensor 6-conductor cable into the cabinet, carefully strip back the cable jacket and shielding on the service end of the cable.
- 2 Open the insulation displacement connectors on the plug by inserting a small screwdriver into each square slot and rocking it back.
- 3 Insert the wire leads into the bottom side of the plug-in terminal according to the color code shown in Table 2.1 and Figure 2.8. Make sure the wires are completely inserted in the terminal.
- 4 Close the insulation displacement connector by reinserting the screwdriver into the square slot and rocking it forward. The plug-in terminals will automatically complete the electrical connection. There is no need to manually strip the insulation on the end of each wire.

There are two measures in place to ensure that the plugs are always returned to their correct terminal block sections.

First, for visual confirmation, one part of the plug is blue (see Figure 2.8) and must be visually matched up to a blue terminal block. The location of the blue piece rotates in the different plugs and terminal block sections: in the first, the first block is blue, in the second, the second is blue, etc.

Second, the plugs are keyed (see the blue piece in Figure 2.8) so they will only fit into their correct terminal block sections.

Wire Color	Signal
Red (PWR)	DC+
Black (GND)	DC-
White with Blue stripe (485+)	Control bridge 485+ (port1)
Blue (485-)	Control bridge 485 - (port 1)
White with Orange stripe (485+)	Data bus 485+ (port 2)
Orange (485-)	Data bus 485- (port 2)
Bare metal (DRN)	Drain

Table 2.1 – Cable Wiring Color Code

Contact Closure Communication

In this chapter

- Using the Click 112/114 DIP Switches
- Using the Click 104 Rotary Switch
- Attaching and Programming the Click 112/114
- Attaching and Programming the Click 104
- Channel Mapping

Each SmartSensor Matrix communicates with standard traffic cabinets using either the Click 104 DIN rail contact closure module or the Click 112/114 detector rack cards (see Figure 3.1). During real-time operations, up to four channels from each sensor can be signaled to a Click 114 or Click 104 (or to a pair of Click 112 cards daisy-chained together).



Figure 3.1 – Click 104 (left) and Click 112/114 Rack Cards (right)

Note

See the Click 100–400 Series User Guide for complete information on how to connect and configure the Click 104 DIN rail contact closure module and the Click 112/114 detector rack cards.

Each SmartSensor Matrix could potentially use up to 16 channels using a combination of Click 104/112/114 contact closure modules. This means that a standard four-approach stop bar detection system can be accommodated by a 64-channel detector rack.

The Click 112/114 cards can be configured using DIP switches on the circuit board, the front panel menu on the faceplate or Click Supervisor. The Click 104 can be configured using the rotary switch, the front panel menu on the faceplate or Click Supervisor.

Using the Click 112/114 DIP Switches

The DIP switches allow you to program the baud rate and input mapping using the hardware. If the Click 112/114 cards are programmed using the DIP switches, the settings can be viewed, but not modified, using the front panel menu or Click Supervisor.

If you are planning to use either the front panel menu or Click Supervisor to program the device settings, then you will need to first make sure that the DIP switches are set to allow for software configuration; to set this, simply make sure that all relevant switches are turned off (see Figure 3.2).

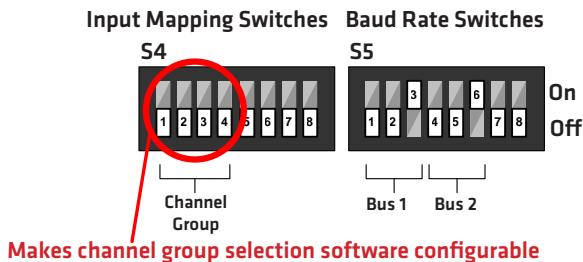


Figure 3.2 – DIP Switch Setting for Software Configuration Mode (left)

There is no need to change the baud rate of the Click 112/114 cards from the factory default of 9600 baud. The settings for the input mapping, however, will need to be set. This process is explained in the following sections.

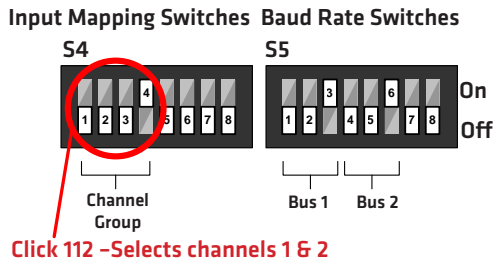


Figure 3.4 – Click 112 DIP Switches for Channels 1 and 2

Figure 3.5 shows how to set the DIP switches on the Click 112 on the right. This will assign sensor output channels 3 and 4 for output.

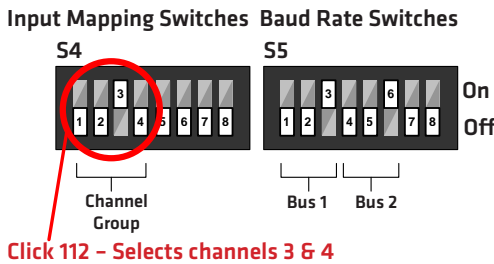


Figure 3.5 – Click 112 DIP Switches for Channels 3 and 4

For information on how to use other DIP switch configuration options, as well as the front panel menu and Click Supervisor, see the Click 112/114 chapter in the Click Series User Guide.

Using the Click 104 Rotary Switch

The rotary switch is located on the lower part of the faceplate and can be used to change the channel input mapping. The switch can be twisted by inserting a small screwdriver into the arrow slot.

If you use this switch to set the channel input mapping, you won't be able to use the Click Supervisor software or the front panel menu to change this particular parameter (although you will still be able to use them to change other parameters).

If the switch is set to 0, the device is in Software mode. This means that all parameters are set by the front panel menu or Click Supervisor. If the switch is set to any other number, the device is in Hardware mode, meaning that the channel input mapping is set by the rotary switch.

The Click 104 has four output channels; if you need more than this, you'll need to use multiple devices daisy-chained together.

As shown in the table below, the outputs are mapped sequentially—that is, they can only be mapped in numerically ordered groups of four (1–4, 5–8, etc.). If you set the switch to 3, for 9–12, then sensor channel 9 would be mapped to output 1, sensor channel 10 would be mapped to output 2, sensor channel 11 would be mapped to output 3, and sensor channel 12 would be mapped to output 4.

Switch	Channels
0	Software mode
1	1–4
2	5–8
3	9–12
4	13–16
5	17–20
6	21–24
7	25–28
8	29–32
9	33–36

Table 3.1 - Click 104 Rotary Switch Channel Input Map Settings

Attaching and Programming the Click 112/114

Use the following steps to set up the contact closure rack cards for each sensor:

- 1 Make sure the DIP switches are set according to Figure 3.3 for a Click 114 and Figures 3.4 and 3.5 for Click 112 cards.
- 2 Power all the cards by plugging them into the detector rack.

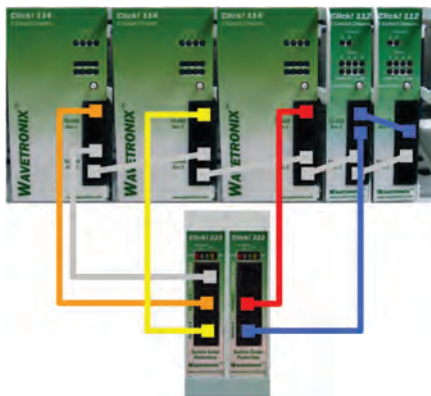


Figure 3.6 - Wiring the Click 112/114 Rack Cards

- 3 Connect a 6-ft. (1.8-m) patch cord from the Click 222 RS-485 A port to a bus 1 port on the appropriate rack card (see Figure 3.6).

- 4 Connect a 6-ft. (1.8-m) patch cord from the Click 222 RS-485 B port to a bus 1 port on another rack card.
- 5 If you are using Click 112 cards, use an 6-in. (15-cm) patch cord to share bus 1 between cards dedicated to the same sensor. Also, configure one card to use Matrix channels 1 and 2 and configure the other card to use Matrix channels 3 and 4. If you have more than two sensors in your system, repeat steps 2–4 to connect bus 1 for all remaining rack cards.
- 6 Connect a 5-ft. (1.5-m) patch cord from one of the Click 222 bridge ports to bus 2 of the rack cards.
- 7 Use the 6-in. (15 cm) patch cords to create a daisy-chain that shares bus 2 between all of the rack cards. Bus 2 will be used for device configuration.

Click 112/114 LEDs

Once you have completed the wiring, check the Menu Level 1 LEDs, which have both menu-indicating and general status–indicating functions. The list below contains information on the general status–indicating functions of the LEDs:

- **PWR (red)** - Indicates the device is powered.
- **PU (blue)** - This LED is not associated with any general status function and should remain off while the card is in normal operating mode.
- **TD (green)** - Indicates the card is transmitting serial communication.
- **RD (yellow)** - Indicates the card is receiving serial communications.

The red LED should be on, showing the card is powered and operating normally.

The list below contains additional information about the rest of the LEDs:

- **Detection Channel LEDs (red)** - Indicates when a call is placed on the corresponding contact closure output channel.
- **Menu Level 2** - Used for the configuration menu that is activated using the Mode switch.
- **General Status (Menu Level 1)** - In addition to the functions listed above, these are used to cycle through and select options from the front panel menu.

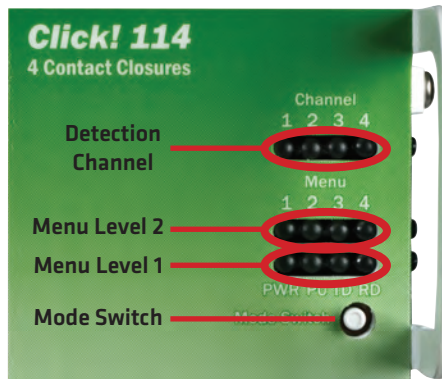


Figure 3.7 – Click 112/114 Menu

Normally, a SmartSensor Matrix sensor will send 10 contact closure messages each second. If a rack card does not receive communications from a sensor within 10 seconds, the rack card will go into fail-safe mode and all of the contact closures will be activated and the corresponding detection channel LEDs on the faceplate will turn on.

Attaching and Programming the Click 104

Use the following steps to set up the DIN rail contact closure module for each sensor:

- 1 Mount the Click 104 on a DIN rail over a T-bus connector. This connects the device's control bus (bus 2) to the installation's shared communication bus; you can connect your computer to another device on this shared bus, such as the Click 305 USB converter, to access the Click 104 to configure it using Click Supervisor. Mounting the Click 104 on the T-bus also connects it to the power source.

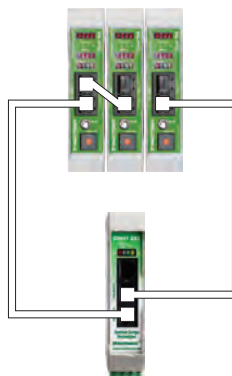


Figure 3.8 – Wiring the Click 104 Module

- 2 Send detection data to the data bus (bus 1). Connect a Click 222 to the Click 104 by connecting jumper cables from the RJ-11 jacks on the faceplate of the Click 222 to the RJ-11 jacks on the faceplate of the Click 104 (see Figure 3.8).

- 3 If needed, daisy-chain multiple Click 104 devices together by utilizing both RJ-11 jacks on each device's faceplate.

Click 104 LEDs

The front panel of the device features a push-button and three banks of LEDs for on-device configuration and monitoring. The first bank of LEDs, labeled Channel, displays the state of the contact closure outputs (see Figure 3.8).

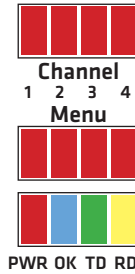


Figure 3.9 – Click 104 LEDs

The two lower banks of LEDs, labeled Menu, and the push-button, labeled Mode Switch, are used for navigating through Menu mode.

The lower bank of LEDs will be referred to as Level 1 and is used in selecting menu options. The upper bank will be referred to as Level 2 and is used in configuring the menu options. Level 2 LEDs only light up when a menu selection is made using the Level 1 LEDs.

The mode switch push-button is used to enter Menu mode (see Figure 3.9). To use the menu:

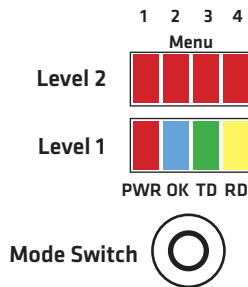


Figure 3.10 – Click 104 LED Menu

- 1 Press and hold the mode switch to enter Menu mode. The Level 1 LEDs will start to light up to indicate that the device is cycling through all menu options.
- 2 Release the mode switch when you reach the desired menu option. (Pressing and holding again will resume cycling through menu options.)
- 3 Quickly press and release the mode switch to select the current menu option. Once it's selected, the Level 2 LEDs will start to let you configure the options for the selected

menu option.

- 4 Press and hold the mode switch to cycle through the submenu. The Level 2 LEDs will light to indicate that the device is cycling through all configuration options.
- 5 Release the mode switch once the desired configuration option is reached.
- 6 Quickly press and release the mode switch to select the current configuration option. The device will exit Menu mode, and either the selected function will run or the selected configuration will be set and saved to the device.

Channel Mapping

Once the Click 104/112/114 devices are installed, make sure that each detector rack channel is properly mapped to the correct traffic phase in the traffic controller. The general NEMA standard for 8-phase numbering is presented in Figure 3.8. Many intersections will not have eight phases, and in some cases they may not even follow the NEMA convention. Check the plans in the traffic signal cabinet to verify how the phases are numbered at each intersection.

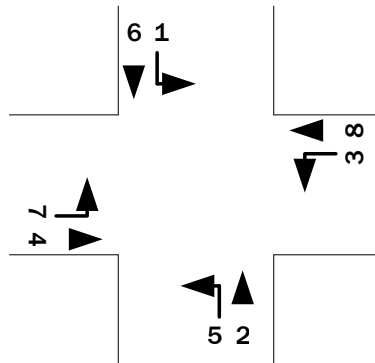


Figure 3.11 – Standard NEMA 8-phase Number Scheme

Phases 1, 2, 5 and 6 are often used for the “main” street, and phases 3, 4, 7 and 8 are often used for the “side” street as shown in Figure 3.8.

Note

Chapter 10 contains a section about Rack Card Tools which explains how the channel-to-phase mapping can be verified with or without the sensors installed.

Since each Matrix sensor often detects both the left-turn phase and the through-movement phase for a single approach, the associated rack card will often have channels that correspond to one of the following phase (ϕ) pairs: $\phi 2$ and $\phi 5$; $\phi 6$ and $\phi 1$; $\phi 4$ and $\phi 7$; $\phi 8$ and $\phi 3$.

NEMA TS2, 2070 and other advanced traffic cabinet systems usually allow software programming of the detector card channel outputs to traffic phases via a channel-to-phase mapping grid in the controller menu. Figure 3.9 illustrates how the detector channels 1 to 16 of a NEMA TS-2 rack can be assigned to the standard eight phases using four Click 114 cards. The rack card slots are numbered across the top and the controller's detection channels are represented by the gray labels C1–C16.

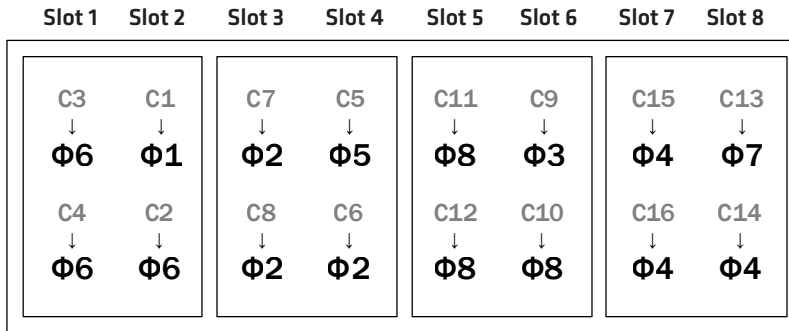


Figure 3.12 – NEMA TS-2 Type 1 Rack Channel to Traffic Phase Example

In Figure 3.9, four channels are used from each SmartSensor Matrix. In this example, channel 1 from the first sensor is mapped to traffic phase 1 (left-turn phase on main street). Channels 2, 3 and 4 from the first sensor are mapped to traffic phase 6. This represents a case where detections from three through-movement lanes are brought in separately. This type of lane-by-lane detection can be beneficial in some situations. Wavetronix typically recommends the use of 4-channel cards because it offers greater flexibility of signaling contact closures.

Note

With NEMA TS1 and other legacy systems, the programming is often done via a wiring panel on the side of the controller cabinet. With wired systems, you will need to verify that the wiring on the detector programming panel provides the proper mapping from the rack channel outputs to the controller input wires dedicated for $\phi 1$ – $\phi 8$ detector calls.

Part II

Using SmartSensor Manager Matrix

Chapter 4 - Installing SmartSensor Manager Matrix

Chapter 5 - Communication

Chapter 6 - Sensor Settings

Chapter 7 - Lanes & Stop Bars

Chapter 8 - Zones & Channels

Chapter 9 - Verification

Chapter 10 - Tools

Installing SmartSensor Manager Matrix

4

In this chapter

- Installing SSMM
- Microsoft .NET Framework

The SmartSensor Manager Matrix (SSMM) software enables you to configure and interact with the SmartSensor Matrix. SSMM can be run on a Windows® PC and on a Socket Mobile 650 handheld computer.

The software can be downloaded on other computers by going to www.wavetronix.com. This chapter explains how to download and install the SSMM software.

Using the Click 421

The Click 421 converts wired or wireless serial data to RS-485 communication and sends it to all devices on a shared multi-drop communication bus on the backplate. This allows control of all SmartSensor Matrix units from a single access point.

You can make a wired connection using a USB-to-serial converter and a USB adapter cable; alternatively, you can make a wireless connection using a preconfigured Bluetooth link. A whip antenna can be attached to the Click 421 to increase the distance and reliability of the wireless link.

Follow the steps below to use the Click 421 to communicate with the SmartSensor Matrix:

- 1 Rock the Click 421 device onto the green T-bus to the left of the gray T-bus connector on the second DIN rail on the backplate.

- 2 Make a wired (using the serial port on the front of the device) or wireless (Bluetooth) connection between the Click 421 and the handheld computer.

If you wish to establish a wired connection with a laptop computer instead of the handheld device, use the laptop's native RS-232 serial port to connect to the Click 421, or a USB-to-serial converter if the laptop does not have an RS-232 serial port. You can also establish a Bluetooth connection from your laptop to the Click 421. To do so, consult your laptop's software guidelines on how to discover Bluetooth devices and configure a Bluetooth serial connection.

An RJ-11 patch cord with a pigtail on one end can be wired to the RS-485 screw terminal on the Click 421 and used to patch into RJ-11 sockets on the rack cards or backplate for troubleshooting.

Once you've connected to the Click 421, you can connect to the sensor using SmartSensor Manager Matrix, as outlined in the next chapter.

Installing SSMM

You can install SSMM to your PC or laptop. Everything needed for this installation is contained in the **SSMM Setup.exe** file.

Note

You must have Administrator rights to run the setup program.

Follow these steps to install SSMM on a PC or laptop:

- 1 To download the install file, go to the Wavetronix website at www.wavetronix.com.
- 2 Click the **Support** link near the top of the page and follow the controls to find the correct link for the SmartSensor Manager Matrix install file.
- 3 Once you've downloaded the file, double-click on it. Opening it executes a setup program that will copy all the necessary files to the hard drive and place icons in the Start menu and on the desktop of the PC or laptop (see Figure 4.2).



Figure 4.1 – SSMM Setup Wizard

- 4 Select an installation location. The default location provided is normally “C:\Program Files\Wavetronix.” If desired, click **Browse** to choose another location (see Figure 4.3).

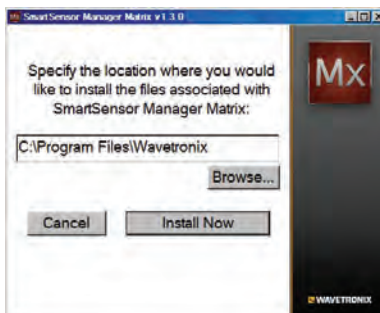


Figure 4.2 – Location to be Installed

- 5 Click the **Install Now** button.
- 6 After SSMM is installed, you can create shortcuts to the SSMM software on the desktop and in the Start menu using the corresponding checkboxes (see Figure 4.4). If no shortcuts are desired, uncheck the corresponding boxes.

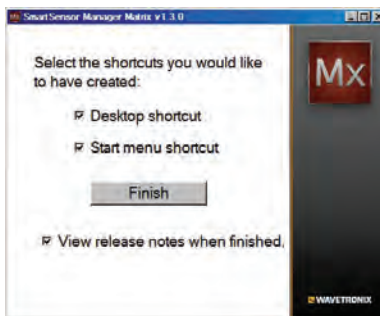


Figure 4.3 – Shortcut Options

- 7 Click the **View release notes when finished** checkbox to view the SSMM release notes. The release notes contain additional information about the current version of

the SSMM software. A PDF reader program (i.e. Adobe Acrobat Reader) is required to view the release notes.

- 8 Click **Finish** to complete the setup process.

Note

SSMM is designed for the 96 DPI display setting. The application may not display text properly, and may not function properly in general, if the display is not set to 96 DPI.

Installing SSMM on a Handheld Computer

SSMM can also be installed and on a handheld computer. Use these steps to install SSMM on a handheld computer running Windows Mobile:

- 1 Ensure the handheld computer is connected to the PC and synced.
- 2 Click on the **SSMM Setup.exe** file to run the setup program on the host computer. The SSMM Setup Wizard will automatically check the host computer to see if Microsoft ActiveSync is installed (ActiveSync is a program that is used to communicate with a handheld device). If the ActiveSync program is found, the option of installing SSMM to a handheld device will become available.
- 3 Click the Pocket PC checkbox and then the **Next>>** button to install SSMM on a connected handheld device (see Figure 4.5). If both the Computer and Pocket PC boxes are checked, the setup program will first install the SSMM software to the PC.



Figure 4.4 - Destination Selection

- 4 Click **Continue>>** to start the handheld computer installation process. The setup program runs the Add/Remove Programs application for Windows handheld devices. If a handheld device is connected to the computer, Add/Remove Programs will immediately begin installing SSMM on the handheld device. If a handheld device is not connected to the computer, SSMM will be downloaded the next time a handheld device is connected to the computer.

- 5 Click **OK** once the download is complete.

Microsoft .NET Framework

The SSMM setup program will automatically detect whether Microsoft .NET Compact Framework v3.5 is installed on your PC. If it is not installed, you will be prompted to install it (see Figure 4.7).

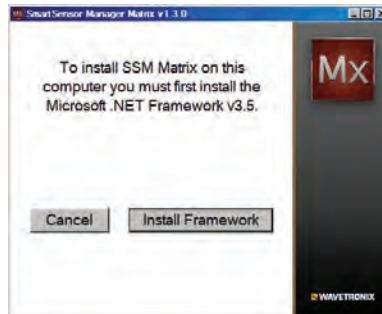


Figure 4.5 – Microsoft .NET Framework V2.0 Prompt

Click the **Install Framework** button and you will be taken to the Microsoft Website where you can install the latest version of Microsoft .NET Framework.

In this chapter

- Serial Connection
- Internet Connection
- Virtual Connection
- Viewing Connection Info
- Upgrading the Sensor's Embedded Software

Once the sensors are installed, use the SSMM software to change settings, view data and configure the sensors to the roadway.

Launch SSMM by either clicking on the icon that was placed on your desktop or clicking the icon found in the Start menu. The SSMM splash screen and then main screen shown in Figure 5.1 will appear.



Figure 5.1 - SSMM Splash Screen (left) and Main Screen (right)

You can always view the version of SSMM you are using by right-clicking (click and hold on handheld) on the main screen and then clicking **SSM Matrix Version**. To see the version, date and timestamp of the individual components that make up the program, select **Component Version** (see Figure 5.2).

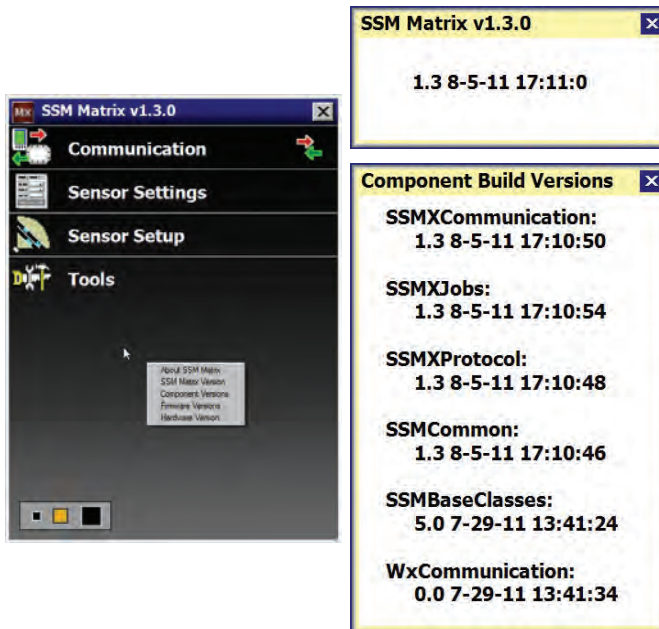


Figure 5.2 - Matrix Version (top) and Component Version (bottom)

After you are connected to a sensor, you can also view the dates the firmware components were created by clicking **Firmware Versions**. Information on the two main hardware components, the DSP and RF board, can be viewed by clicking **Hardware Version** (see Figure 5.3).

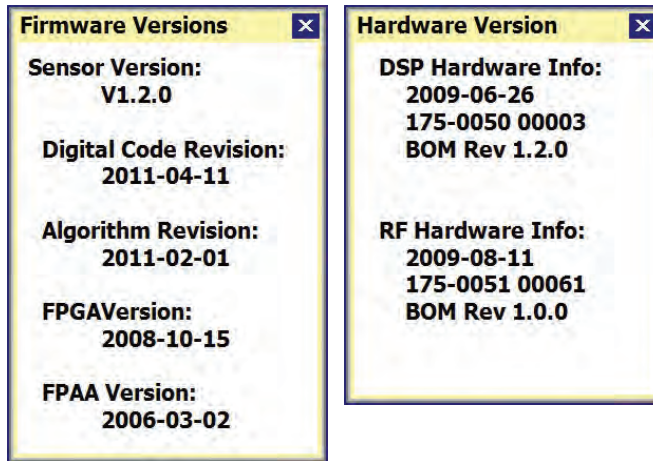


Figure 5.3 – Firmware Versions (left) and Hardware Versions (right)

If you are using SSMM on a computer, you can use the panel in the lower left of the main screen to change the size of the user interface on your computer. Click any of the three squares to increase or decrease the size of the user interface.

The first step is to make a connection to the sensor. The following three types of connections can be made:

- **Serial connection** – Made using Bluetooth, RS-232, or RS-485 communication.
- **Internet connection** – Made using an IP address and a serial to Ethernet converter.
- **Virtual connection** – Made for convenience in learning and demonstrating SSMM functionality.

Communication settings are stored in the system registry each time a connection is established. After the first connection is made to the SS225, the SSMM software will save the connection settings that were used. Click the magnifying glass icon on the right side of the communication link to connect using the most recently used parameters stored in the registry.

Serial Connection

- 1 Click on **Communication** to access the Communication window (see Figure 5.2).
- 2 Select the **Serial** tab.
- 3 Set **Port** and **Timeout** to the desired settings.
- 4 Select the type of search (**Full** or **Quick**) you would like to perform. A full search will find all SmartSensor Matrix units on the selected RS-485 control bus and can take up to 30 seconds; a quick search can be used after the first time a full search has been performed.

Note

A quick search should not be used the first time you connect to sensors on an RS-485 control bus. If you add or replace a sensor on an existing control bus, a full search will need to be performed before a quick search can be made.

Note

If you perform a full search and then cancel before the search is complete, the sensors not discovered before the full search was terminated will also not be visible after a quick search. You will then need to perform a full search to completion before all sensors can be discovered using a quick search.

- 5 Click the **Search** button.
- 6 Click on the desired sensor row from the list to select a sensor (see Figure 5.4). The sensor list shows the sensor ID, location, and approach of each discovered sensor.
- 7 Click the **Connect** button. You will be directed back to the home page once a connection is established.

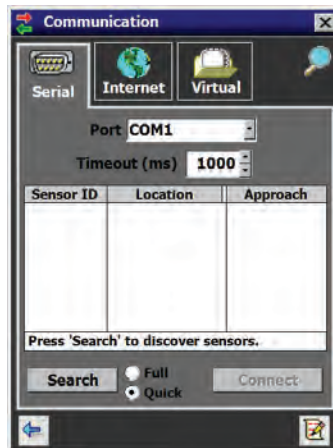


Figure 5.4 – Serial Connection



After you have connected to a sensor, the next time you would like to connect you can simply click the magnifying glass icon in the upper right corner of the screen. This will take you to the last connection settings you used to connect to a sensor.

The first time you connect to a sensor, the default Sensor ID will be the last seven digits of the sensor's serial number. However, the names in the **Location** and **Approach** fields will

be set to default values.

Note

It is recommended that you label the service end of each SmartSensor Matrix cable when the cable is pulled so that the approach the sensor is monitoring can be documented. You may need to power down all sensors except for the one you are configuring in order to determine which approach it is monitoring.

If you have problems connecting:

- 1 Make sure that all power and communication wiring is correct.
- 2 Check the port settings (Port ID).

Connection failure can occur for various reasons; if a failure occurs repeatedly, call Wavetronix Technical Support at 801-734-7200 for assistance.



Once you have selected a sensor from the device list, you can click again on that row to bring up a Sensor Info pop-up (see Figure 5.5). To bring up the Sensor Info pop-up, you can also click on the sensor icon that appears in the upper right corner of the screen (see Figure 5.4). The information in the Sensor Info screen cannot be edited.

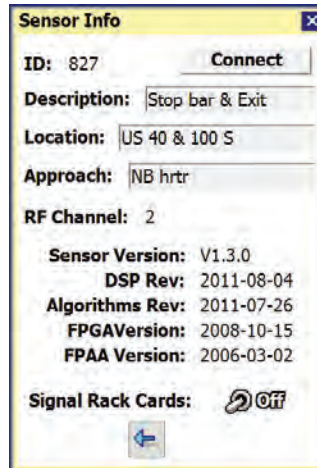


Figure 5.5 - Sensor Info Screen

The Sensor Info screen lists the following sensor settings and version information:

- **Sensor ID** - The last seven digits of the sensor serial number. This field is not editable.
- **Description** - Used to describe the application (e.g. stop bar detection); can also be used for GPS coordinates. This field is not editable from this screen.
- **Location** - Used to describe the intersection where the sensor is located. This field is

not editable from this screen.

- **Approach** - Used to indicate which approach of the intersection the sensor monitors. This field is not editable from this screen.
- **Sensor Version** - Overall sensor product version, which represents a released combination of the DSP, Algorithm, FPGA and FPAA subcomponent versions.
- **DSP Rev** - DSP code version date (YYYY-MM-DD).
- **Algorithms Rev** - Algorithm code version date (YYYY-MM-DD).
- **FPGA Version** - FPGA version date (YYYY-MM-DD).
- **FPAA Version** - FPAA version date (YYYY-MM-DD).
- **Signal Rack Cards** - When the switch is on, any rack cards connected to this sensor's data port will identify themselves by flashing a blink sequence on the main menu LEDs of the rack card.

Internet Connection

The SmartSensor Matrix can be connected to the Internet, allowing access to the sensor from anywhere with Internet access. The following is a list of ways to connect the SmartSensor Matrix to the Internet:

- **Serial to Ethernet Converter** - The SmartSensor Matrix can be connected to a local area network (LAN) by using a Click 301 serial to Ethernet converter.
- **Serial to 802.11b Wireless** - The SmartSensor Matrix can be connected using a Click 420 serial to 802.11b converter. The Click 420 provides serial devices with an IP address on a wireless 802.11b network.
- **Internet Service Providers** - The SmartSensor Matrix can be equipped with optional external modems (CDMA, GMS or GPRS) and assigned an Internet address on these networks. (Please contact Wavetronix Technical Services for assistance.)

Note

The Internet connection is made to the control bridge and NOT to the data ports.

Use the steps below to connect to the SmartSensor Matrix using an Internet connection:

- 1 Click on **Communication**.
- 2 Click the **Internet** tab and the Internet setting options will appear (see Figure 5.6).

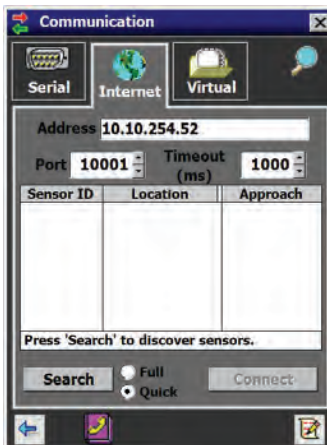


Figure 5.6 – Internet Connection Screen

- 3 Enter the IP address or URL of the sensor of interest. Enter the IP address assigned to either the CDMA modem or the Click 301 serial to Ethernet converter.
- 4 Enter the port number assigned to the CDMA modem or the Click 301 serial to Ethernet converter in the **Port** field. This will be an integer value in the range of 0–65536. The Click 301 port number automatically defaults to 10001.
- 5 Set the **Timeout** value to 1000.
- 6 Select the type of search (**Full** or **Quick**) you would like to perform (see the Serial Connection section of this chapter for more on these two searches).
- 7 Click the **Search** button. This may take up to 30 seconds while the sensors on your control bus are discovered and listed. (You can click **Cancel** as soon as the sensor of interest is listed.)
- 8 Click on the desired row from the list to select a sensor (see Figure 5.7).

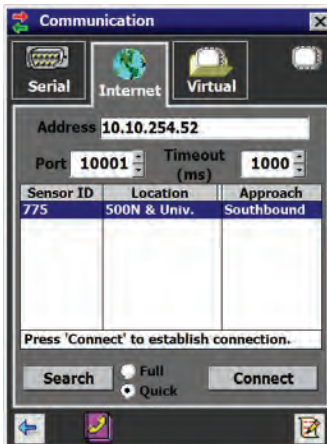


Figure 5.7 – Internet Connection Screen

- 9 Click the **Connect** button. When a connection is established you will be directed back to the home page.

If you have problems connecting:

- 1 Make sure that all power and communication wiring is correct.
- 2 Check the address and port number.

Connection failure can occur for various reasons; if a failure occurs repeatedly, call Watvetronix Technical Support at 801-764-0277 for assistance.

Address Book

The Address Book is available on the Internet connection tab and allows you to save IP connection settings for future use.

Click the **Address Book** button located at the bottom of the Communication page to add new connection settings to the Address Book (see Figure 5.8).

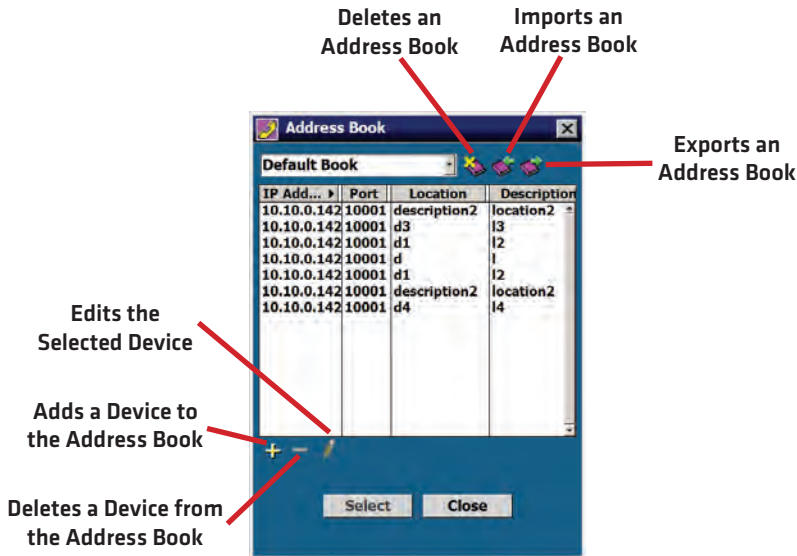


Figure 5.8 – Address Book

Virtual Connection

A virtual connection allows you to use the SSMM software without being connected to an actual sensor. Making a virtual connection can be useful for the following reasons:

- To view a saved sensor setup file
- To play back previously logged traffic
- To demonstrate functionality for different traffic applications

- To review how the software works

Use the following steps to make a virtual connection:

- 1 Click the **Communication** button.
- 2 Select the **Virtual** tab (see Figure 5.9).



Figure 5.9 – Virtual Connection Screen

- 3 Select or create a virtual sensor file (.vsf) by clicking the magnifying glass icon.
- 4 Click the **Search** button. This may take up to 30 seconds while the sensors on your virtual control bus are discovered and listed. (You can click **Cancel** if the sensor of interest has already been listed.)
- 5 Click on the desired row from the list to select a sensor.
- 6 Click the **Connect** button. When a connection is established you will be directed back to the home page.

Virtual Sensor File

Since a virtual connection is not made to an actual sensor, a virtual sensor file (.vsf) is used to save the configuration settings much like an actual sensor's flash memory. SSMM comes with default virtual files that you can see once you click the **Search** button. If you create your own virtual sensor file, you will have to find it in the virtual files directory by clicking the magnifying glass icon under the Virtual Sensor Files Location heading.

Note

When you are connected using a virtual sensor file, changes that would normally be saved to a sensor's flash memory will automatically be saved to the virtual sensor file.

Virtual sensor files can be converted to sensor setup files and can be restored to an actual sensor; sensor setup files that have been backed up from a sensor can also be converted to virtual sensor files. To convert a sensor setup file to a virtual sensor file, make a virtual connection and then use the **Restore Sensor Setup** tool in the **Tools** menu. To convert a virtual sensor file to a sensor setup file, use the **Back-up Sensor Setup** tool.

Note

To configure channels for a future installation, connect using a virtual connection, create a virtual sensor file and then back up the configuration settings that you created. After the file is successfully backed up, the virtual sensor file will change to a sensor setup file and can be restored to any sensor in the field.

When a connection is made to the SmartSensor Matrix, the main menu will appear and all configuration options will become available (see Figure 5.10).

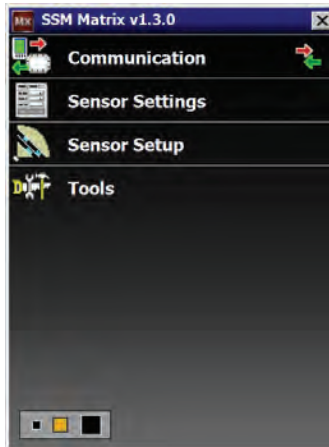


Figure 5.10 - Main Menu (Connected)

Viewing Connection Information

Once connected, you can view additional information about the connection you have established by clicking on the moving arrows icon on the top right of the main menu page or on the bottom right of the Communication screen (see Figure 5.11). These arrows are only visible when there is an established connection.

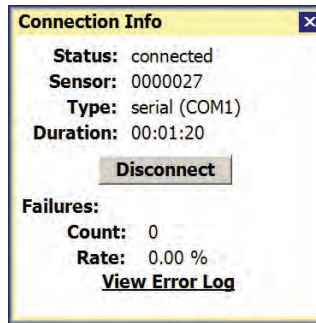


Figure 5.11 – Connection Info Screen

Below is a list of the information available on the Connection Info screen:

- **Status** - Shows that you are connected.
- **Sensor** - Shows the subnet and sensor ID.
- **Type** - Shows the type of connection.
- **Duration** - Shows how long you have been connected.
- **Failures** - Shows the amount of failures during the connection, the percentage rate of failure and a link to the communication error log.

Communication Error Log

The error log contains all errors stored in the sensor's memory buffer. If you are having trouble connecting, using the error log may be helpful in the troubleshooting process. If you continue having trouble, save the error log file and contact Wavetronix Technical Services.

Note

The error log is cleared every time you close SSMM, so if you need to save the file, do so before shutting the program down.

Click the **View Error Log** link to view the communications error log (see Figure 5.12). The error log can also be accessed by clicking on the Error Log icon at the bottom of the Communication screen.

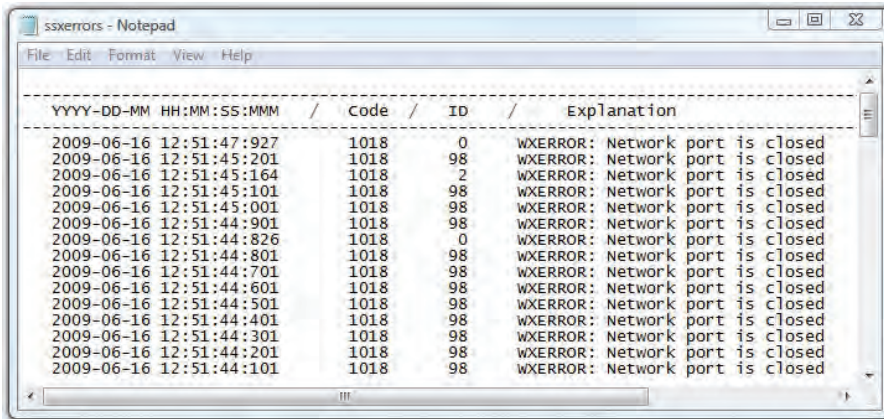


Figure 5.12 – Error Log

Upgrading the Sensor's Embedded Software

After clicking the **Connect** button, the software will check to see if your software version matches the version of the sensor's embedded software. If a discrepancy is detected, the Version Control screen may appear asking you to install firmware upgrades (see Figure 5.13). If you think you have reached this screen in error, clicking the **Recheck** button will have the software retry and ensure that there has not been a communication issue. Clicking the **Details** button will display the current sensor and software information. Click the **UPLOAD FIRMWARE** button to upgrade the software.

Checking the **Upload to all sensors** checkbox will broadcast the upgrade to all the sensors on the control bridge. Check the **Disable fast pacing** checkbox if you are connected using Bluetooth or other devices with a slow connection speed (see Figure 5.13).

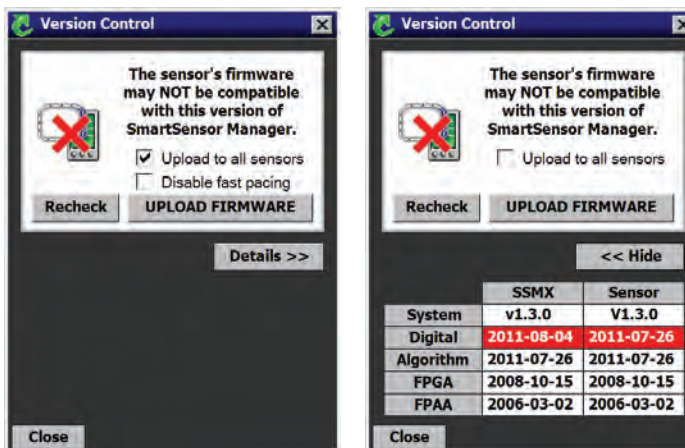


Figure 5.13 – Sensor's Embedded Software Upgrade (left) and Details Table (right)

Click the **Details** button to view the firmware versions of both the SSMM software and the SmartSensor Matrix.

Once the Version Control screen appears, you can do one of the following:

- Upgrade the sensor's embedded software by clicking the **UPLOAD FIRMWARE** button.
- Click the **Close** button and continue the configuration process.
- Find the version of SSMM software that is compatible with the sensor's embedded software.

Note

Clicking the **Close** button and continuing configuration without upgrading may cause problems with functionality.

If any row is highlighted in red, the firmware upgrade may need to be installed. Compare the sensor number with the SSMM number in the Digital row of the details table. If the SSMM firmware version date is more recent than the sensor firmware version date, the newer firmware will need to be installed; if the sensor's firmware date is more recent than the SSMM firmware version date, a warning will appear notifying you that older firmware will be upgraded to the sensor (see Figure 5.14).

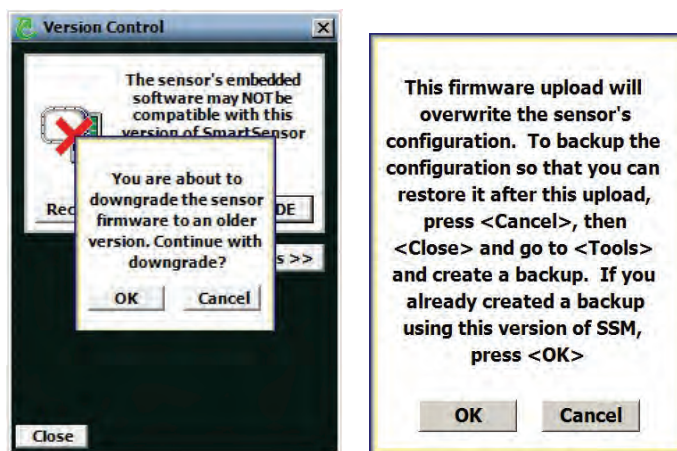


Figure 5.14 – Sensor Firmware Downgrade (left) Back Up Configuration (right)

If the downgrade message appears, it means that the sensor firmware is newer than the version of SSMM that was used to connect to the sensor. The newest version of SSMM can be downloaded from www.wavetronix.com.

If you are upgrading from certain versions of SSMM, the upgrade may cause you to lose

your sensor configuration. Follow the steps in the back up message to back up your sensor's configuration.

Note

If you are upgrading the software, it is always a good idea to back up your sensor configuration. There is always a chance that the sensor configuration could be lost after upgrading. You can create a back up file by going to the Tools screen (see Chapter 10).

Click the **UPLOAD FIRMWARE** button to install the firmware embedded in SSMM onto the SmartSensor Matrix. The **Recheck** button will query the sensor to see if the firmware bundled in SSMM is different than the version running on the sensor.

Sensor Settings

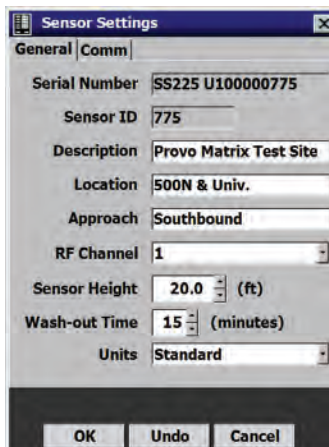
In this chapter

- Sensor Settings Screen
- Sensor Info Screen

Click the **Sensor Settings** link on the main menu to change and save settings on the sensor.

General Sensor Settings

The General tab of the Sensor Settings screen allows you to change the sensor description, RF channel, wash-out time, and other settings (see Figure 6.1).



The image shows a screenshot of a software window titled "Sensor Settings". The window has two tabs: "General" (selected) and "Comm". The "General" tab contains the following fields and values:

Field	Value
Serial Number	SS225 U10000775
Sensor ID	775
Description	Provo Matrix Test Site
Location	500N & Univ.
Approach	Southbound
RF Channel	1
Sensor Height	20.0 (ft)
Wash-out Time	15 (minutes)
Units	Standard

At the bottom of the window, there are three buttons: "OK", "Undo", and "Cancel".

Figure 6.1 - Serial Settings Window

The General tab contains the following fields:

- **Serial Number** – Contains the sensor serial number and cannot be edited.
- **Sensor ID** – Contains the ID used to uniquely identify all sensors on a multi-drop bus. This ID is the last seven digits of the sensor's serial number and cannot be edited.
- **Description** – Allows you to enter a description for each sensor. Limited to 64 characters.
- **Location** – Allows you to enter the intersection location of the sensor. Limited to 64 characters.
- **Approach** – Allows you to enter information about the direction of traffic the sensor is detecting (e.g. NB, SB, EB, WB). Limited to 32 characters.
- **RF Channel** – Lets you set which one of the eight radio frequency channels the sensor is using. Using multiple sensors in close proximity will require each sensor to be set to a different RF channel (see the introduction for more information about mounting the sensor).
- **Sensor Height** – The height of the sensor in feet. This value affects the sensor's detection algorithms. Entering an approximate height measurement for the sensor allows detections to be placed correctly on the roadway.
- **Wash-out Time** – Used to set the time the sensor has to see a tracker before it gets washed out into the background.
- **Units** – Allows sensor height, zone dimensions and road objects to be viewed in metric mode rather than standard units.

Comm Sensor Settings

The Comm tab allows you to change the response delay, and other settings (see Figure 6.2).

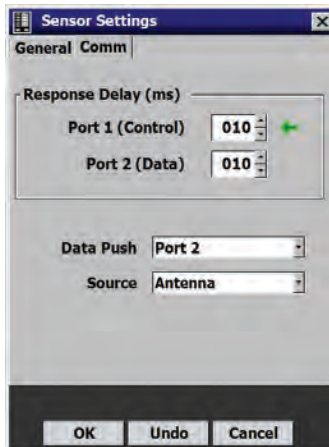


Figure 6.2 – Comm Tab

- **Response Delay** – Used to configure how long the sensor will wait before responding to a message received. This is useful for some communications devices that are unable

to quickly change transmission direction. The default value is 10 milliseconds. This value can be selected for both of the sensor's ports independently.

Note

In many cases, SSMM will be connected over port 1. A green arrow is used to show the port over which SSMM is connected to the sensor. During troubleshooting or other special cases, you may want to connect to the sensor over port 2. Port 2 is connected to the orange RS-485 wire pair and is typically used for detection calls.

- **Data Push** - Data can be pushed over port 1, port 2 or both. To disable data push, select **None**. In many cases, data push will only occur over port 2.

If you would like to change which port is used to push data, please contact Wavetronix Technical Services first, as changing this setting can affect how the sensor, and other devices connected to it, are wired.

Note

If for some reason SSMM connects over the same port that SmartSensor Matrix is using to push data, the software will continue to poll the sensor for detection call messages. This will help keep the intersection operating normally during the configuration process.

- **Source** - In normal use, the source is always the radar antenna. However, in some cases, other sources may be used for demonstrations or evaluations. When the source is switched to **Diagnostic**, the antenna is no longer used. Instead, a predetermined sequence of traffic will appear.

Sensor Info Screen

Some of the Sensor Settings information can be viewed on the Sensor Info screen. After searching for sensors, select a sensor from the list and either click on the sensor icon in the upper right corner of the Communication screen or click again on the sensor row and the Sensor Info screen will appear (see Figure 6.3).

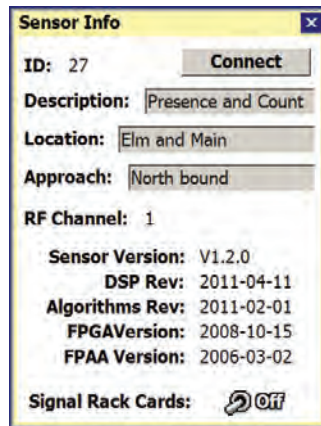


Figure 6.3 – Sensor Info Screen

Lanes & Stop Bars

In this chapter

- Display Options
- Menu Bar
- Automatic Configuration
- Manual Configuration

After Sensor Settings, the next option available from the main menu is **Sensor Setup**. When you click this option, the first screen that appears is Lanes & Stop Bars.

The Lanes & Stop Bars screen shows the sensor's 100-ft. (30.5-m), 90° degree view and provides automatic and manual controls to quickly and easily configure the sensor to the roadway. The sensor's view has the appearance of a baseball infield with the sensor icon shown at the position where home plate would be (see Figure 7.1).

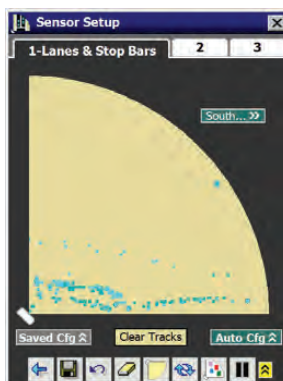


Figure 7.1 – Lanes & Stop Bars Tab

Vehicle detections are represented by tracks (a series of dots) along the sensor's view. The vehicle tracks show where the sensor is detecting traffic and will later help you configure lanes. Vehicle track history can be cleared from the screen by clicking the **Clear Tracks** button below the sensor view.

Note

Vehicle tracks are not constrained to lanes, even after you have saved a lane configuration to the sensor.

Display Options

The Lanes & Stop Bar tab has the following display options:

- Edit Area
- Edit Area with Saved Configuration Overlay
- Edit Area with Automatic Configuration Overlay

Edit Area

The edit area is where manual changes to the sensor's configuration are made (see Figure 7.2). The changes you make in the edit area will only be saved if you click on the **Save Config** button or click on another tab.

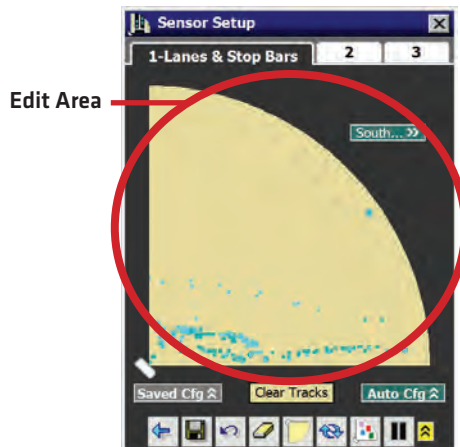


Figure 7.2 - Edit Area

You can copy elements from the saved and automatic configuration, which will be described later.

The Edit Area also contains the approach name in a small window outside of the sensor's view (see Figure 7.3) If needed, click on the name box to see the entire approach name. This allows you to always know which approach is being configured. The approach name can be edited in the Sensor Settings window.

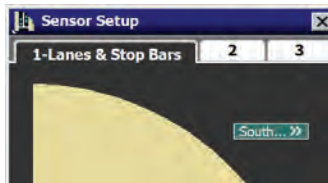


Figure 7.3 – Approach Name

Saved Configuration Overlay

The Saved Configuration overlay shows everything that has been saved to the sensor (see Figure 7.4). The purpose of this feature is to compare what is currently saved to the sensor with the changes you are making in the edit area. To show or hide this overlay, click the **Saved Cfg** button.

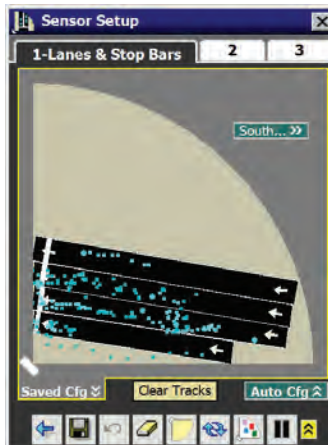


Figure 7.4 – Saved Configuration Overlay

Automatic Configuration Overlay

The Automatic Configuration overlay shows lanes and stop bars that have been automatically discovered (see Figure 7.5). To show or hide this overlay, click the **Auto Cfg** button.

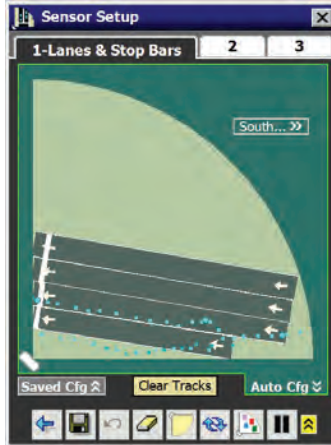


Figure 7.5 – Automatic Configuration Overlay

SmartSensor Matrix is constantly running the auto-configuration process in order to find undiscovered lanes and stop bars. During this process, lanes will appear in the Auto Cfg overlay. You will need to select and capture auto-configured lanes in order to save them to the sensor (see the Capturing Lanes and Stop Bars section below). Wait at least 2–3 cycles of the intersection to accurately detect the lanes and stop bars.

Capturing Lanes and Stop Bars

Lanes that appear in the Saved Configuration Overlay or in the Automatic Configuration Overlay can be captured by clicking on them. Once a lane is captured, it becomes part of the edit area. Captured lanes are only copied to the edit area and are NOT saved to the sensor until after clicking on the **Save Config** button.

To capture lanes:

- 1 Select a lane by clicking on it once.
- 2 Click on the lane a second time to bring up the Capture window (see Figure 7.6).
- 3 Click on the **Capture Lane** button to capture the selected lane. If you want to capture all the configured lanes, click the **Capture All** button.




Figure 7.6 – Capture Window

Note

If a stop bar is found for a lane during the auto-configuration process, it will be captured with the lane.

Menu Bar

The menu bar at the bottom of the screen allows you to perform a variety of operations during sensor configuration. Click the  button at the right side of the menu bar to open a window that shows descriptions for the various menu icons (see Figure 7.7).

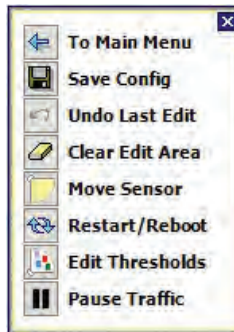


Figure 7.7 - Sensor Setup Menu Window

The Menu Bar contains the following options:

- **To Main Menu** - Returns you to the main menu.
- **Save Config** - Saves the lanes and stop bars to the sensor.
- **Undo Last Edit** - Undoes the last change in the edit area.
- **Clear Edit Area** - Deletes all lanes from the edit area.
- **Move Sensor** - Moves the sensor to a different corner of the edit area and rotates the view accordingly.
- **Restart/Reboot** - Gives you the option to restart automatic configuration or reboot the sensor.
- **Edit Thresholds** - Allows you to edit the sensor's thresholds.
- **Pause Traffic** - Suspends or resumes movement of vehicle tracks on the screen.

Saving the Configuration



After automatic and manual configuration is complete, click the **Save Config** button to save the changes to the sensor. If you attempt to leave the Lanes & Stop Bar view before saving your changes, the following prompt will appear (see Figure 7.8).

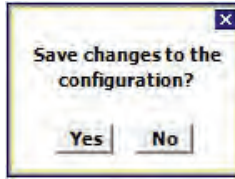


Figure 7.8 – Save Changes Dialog

Moving the Sensor View



The SSMM software shows the position of the SmartSensor Matrix and the view is drawn from the perspective of the sensor. The sensor's default position is in the bottom-left corner of the display. If the perspective in the software does not match your perspective of the roadway, click the **Rotate View** button until the sensor position matches the approach you are configuring.

Note

Moving the sensor in the software will have no effect on the sensor's performance. Its purpose is to facilitate the configuration process.

Restarting Auto Lane Config/Rebooting the Sensor



Restarting the automatic lane configuration will erase any auto-configuration information that may have been gathered and will start the auto-configuration process over again.

Rebooting the sensor will also erase any auto-configuration information, but in addition will clear and reconfigure the sensor thresholds.

Follow the steps below to restart the automatic lane configuration process or reboot the sensor:

- 1 Click the **Restart/Reboot** button and the Restart or Reboot window will appear (see Figure 7.9).
- 2 Select the appropriate radio button and click **OK**.

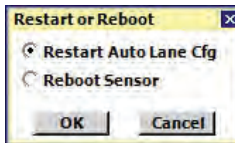


Figure 7.9 – Restart or Reboot Window

Note

After you have mounted and aligned the sensor, you should always reboot the sensor so that thresholds can adjust to the current view.

Editing Thresholds

You should only edit the Matrix thresholds under the direction of Wavetronix Technical Services.

Warning

If you believe that you need to adjust the thresholds, please call Wavetronix at 801-734-7200 for assistance.

- 1 Click on the **Edit Thresholds** button. This will turn the sensor's view green and allow you to change the sensitivity of certain areas in the view.
- 2 Click anywhere within the sensor's view and the Sensitivity window will appear (see Figure 7.10).

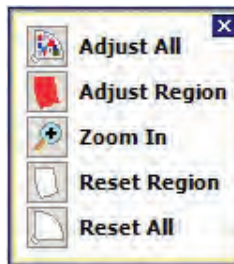


Figure 7.10 – Sensitivity Window

The Sensitivity window contains the following options:

- **Adjust All** – Allows you to edit all of the sensor thresholds.
- **Adjust Region** – Allows you to adjust thresholds in a selected region of the sensor view.
- **Zoom In** – Allows you to zoom in and change thresholds of selected areas in the sensor view (see Figure 7.11).
- **Reset Region** – Allows you to reset only a selected region of thresholds to default settings.
- **Reset All** – Allows you to reset all the sensor thresholds to default settings.

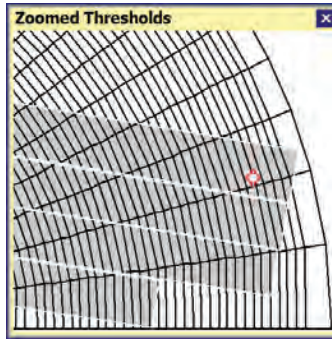


Figure 7.11 – Zoom In Feature

After you click on **Adjust Bins** or **Adjust All**, the Sensitivity Slider window will appear (see Figure 7.12). Click on the up/down buttons to change the sensitivity (in decibels). Negative values will lower the rejection threshold in order to increase sensitivity; positive values will increase the rejection threshold in order to decrease sensitivity.

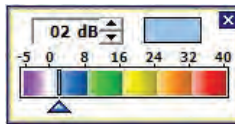





Figure 7.12 – Sensitivity Slider Window

Automatic Configuration

Use the following steps to auto-configure the SmartSensor Matrix:

- 1 Move the sensor to the appropriate location by clicking the  button.
- 2 Click the  button to clear the edit area.
- 3 If necessary, restart Automatic Lane Configuration by clicking the  button and selecting **Restart Auto Lane Cfg** from the window. Allow the intersection to cycle at least twice before proceeding (this will take approximately 5 to 10 minutes).
- 4 Capture lanes & stop bars to edit area.
- 5 Make any necessary manual adjustments.
- 6 Save the desired changes to the sensor.

Note

Lanes have a direction shown by white arrows on top of the lane. To switch the lane direction, simply click on the arrows. (To be able to change lane direction, there must not be any display overlays on.) Before you save the configuration, make sure that all the arrows are pointing in the correct direction.

Manual Configuration

After the automatic configuration process is complete, manual adjustments can be made to fine-tune the sensor configuration. In some cases, it will be easier to configure the sensor manually than to use the auto-configured lanes and stop bars. The following manual operations can be performed:

- Adding/deleting a lane
- Inserting/deleting/moving a stop bar
- Inserting/deleting a lane node
- Moving a lane node
- Adjusting the width of a lane node

Adding/Deleting/Moving a Lane

To add a new lane:

- 1 Click in the edit area where you would like to add a lane and the Edit Area window will appear (see Figure 7.13).
- 2 Click on the **Add Lane** button. You are allowed to have a maximum of ten lanes and you will not be able to save your configuration if any lanes overlap.

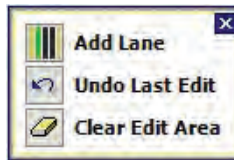


Figure 7.13 – Edit Area Window

To delete a lane:

- 1 Click in the edit area to select the lane you would like to delete and the Edit Lane window will appear (see Figure 7.14).
- 2 Click the **Delete Lane** button.



Figure 7.14 – Edit Lane Window

To move a lane, simply click and drag the lane wherever you need. If you move a lane outside the edit area, a window will appear asking you if you would like to delete the lane (see Figure 7.15).

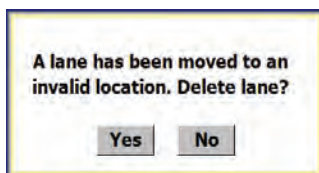


Figure 7.15 – Moving Lane Outside Edit Area

Inserting/Deleting/Moving a Stop Bar

To insert a lane stop bar:

- 1 Select a lane in the edit area.
- 2 Click on the selected lane again to bring up the Edit Lane window (see Figure 7.14).
- 3 Click on the **Insert Stop Bar** option of the Edit Lane window.

To delete a lane stop bar:

- 1 Select a lane in the edit area.
- 2 Click on the **Delete Stop Bar** option of the Delete Stop Bar window (see Figure 7.16).

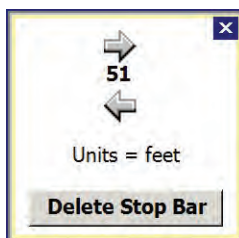


Figure 7.16 – Deleting a Stop Bar

Additionally, you can click and drag or click on the arrows to move the stop bar in the desired direction. The number between the arrows indicates the distance in feet from the lane's end node.

Inserting/Deleting a Lane Node

A lane node is a point, placed within a lane, that can be used to adjust a lane by moving its trajectory, adding turns or corners, or widening part or all of a lane. Each lane starts out with two nodes, one on each end. More can be added as needed.

To insert a lane node:

- 1 Select a lane in the edit area.
- 2 Click on the selected lane in the vicinity of the desired node to bring up the Edit Lane window (see Figure 7.14).
- 3 Click on the **Insert Node** option. A lane can have a maximum of six nodes.

To delete a lane node:

- 1 Select a lane in the edit area.
- 2 Click on the selected lane in the vicinity of the desired node to bring up the Node Adjustment window (see Figure 7.17).
- 3 Click on the **Delete Node** option.

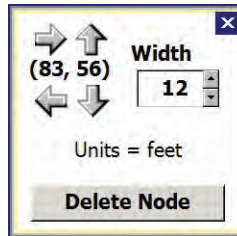


Figure 7.17 - Node Adjustment Window

Moving a Lane Node

- 1 Select a lane in the edit area.
- 2 Click and drag the lane node to the desired location (see Figure 7.18). Additionally, you can click on the selected lane in the vicinity of the desired node to bring up the Node Adjustment window (see Figure 7.17). The numbered pair (x,y) between the arrows indicates the distance within the sensor's view. Click on the arrows to move the node in the desired direction.



Figure 7.18 - Moving a Lane Node

Adjacent lane nodes can be placed to follow the curve of a lane. However, the lane curve cannot exceed 45°. While you will be able to move the node anywhere on the screen, when you try to save, a message will appear notifying you that the lane configuration is invalid if the allowable limits are exceeded.

Adjusting the Width of a Lane Node

Adjusting the width of a lane node will adjust the width of the lane.

- 1 Select a lane in the edit area.
- 2 Click on the selected lane and then click again on the node that will be adjusted and the Edit Node window will appear.
- 3 Change the width (in feet) of the node, by clicking the **Width** up/down buttons or enter the desired node width in the **Width** field. Adjusting the node width will impact detection search area for that lane.

Changing the Lane Arrows

You can change the arrows on the lanes to represent exactly what is present at the intersection.

- 1 Select a lane in the edit area.
- 2 Click on the arrow in the lane to toggle through the different arrow options (see Figure 7.19).

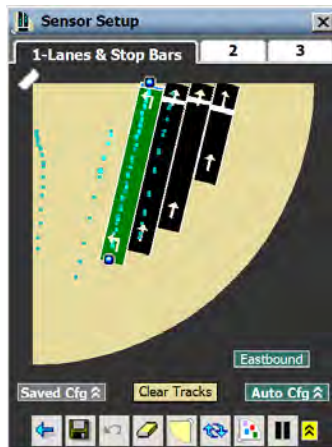


Figure 7.19 – Changing Lane Arrows

Zones & Channels

In this chapter

- Menu Bar
- Placing Zones
- Measuring Zones

After you have configured the lanes and stop bars, click on tab 2 to configure the zones and channels. The Zones & Channels screen allows you to place zones and configure detection channels (see Figure 8.1).

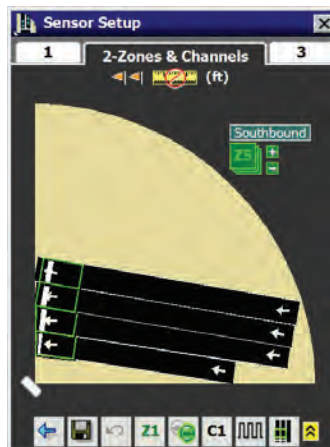


Figure 8.1 – Zones & Channels Tab

Each Matrix sensor supports up to 16 zones and 16 channels. If unused, the 16 zones are stacked outside the sensor view and labeled Z1–Z16.

When you enter the Zones & Channels tab and you haven't yet configured any zones, you will be prompted to add auto zones (see Figure 8.2). If you click **Yes**, a zone will be placed in each configured lane. Lanes and stop bars must be defined before you can add auto zones.

Note

Lanes and stop bars must be defined and saved before you will be able to add auto zones.

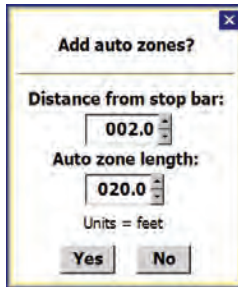



Figure 8.2 – Auto Zones

If you enter a negative number in the **Distance from stop bar:** field, the zone will be placed after the stop bar. To add a negative distance from the stop bar, make the distance 0, highlight the whole field and then click the down arrow once.

You can add a zone up to 100 ft. past the stop bar and a zone can be anywhere from 5 to 100 ft. long.

Menu Bar

The menu bar on the bottom of the screen allows you to make changes to the zones and channels. Click the  button at the right side of the menu bar to see a window with menu descriptions (see Figure 8.3).

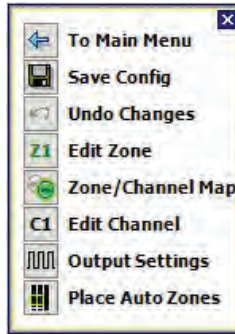


Figure 8.3 – Zones & Channels Menu Bar

The Zones & Channels menu bar contains the following options:

- **To Main Menu** – Returns you to the main menu.
- **Save Config** – Saves the zones and channel mapping to the sensor.
- **Undo Changes** – Undoes changes made to the zones and channels.
- **Edit Zone** – Allows you to move a zone and specify the channels to which it is mapped.
- **Zone/Channel Map** – Allows you to map zones to channels.
- **Edit Channel** – Allows you to map channels and change extend and delay settings.
- **Output Settings** – Allows you to change extend and delay settings for each channel.
- **Place AutoZones** – Allows you to easily place one zone per lane at each stop bar.

How to use these menu options will be covered in the next section.

After the configuration is complete, click the **Save Config** button to save the changes to the sensor. If you attempt to leave the Zones & Channels view before saving your changes, you will be presented with the following prompt:

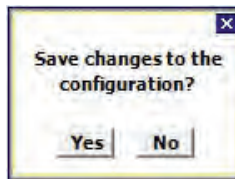


Figure 8.4 – Save Changes Dialog

Placing Zones

Zones can also be placed by dragging them from the stack on the edge of the view to a location within the view. The boundaries of the zones can be moved by selecting the zone, clicking on one of the corners and dragging it to a new location. The first ten automatically placed zones are also mapped to the first ten detection channels respectively.

Editing Zones

Click the **Edit Zone** button to adjust the currently selected zone. An entire zone can be moved by clicking and dragging or by using the arrow buttons on the Edit Zone window (see Figure 8.5). Zones can overlap each other.



Figure 8.5 – Edit Zone Window

Placing AutoZones

Click the **Place Auto Zones** button if you would like to replace your manually configured zones with auto zones. Placing auto zones requires you to insert the distance from the stop bar and also the auto zone width (see Figure 8.6). Clicking **Yes** will add a zone to each automatically configured lane.

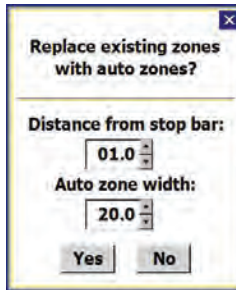


Figure 8.6 – Placing Auto Zones Prompt

If zones are too long for the SSMM view, the zones will be cropped so that the entire zone can be seen. For more information on auto zones, see the auto zone information at the beginning of this chapter.

Note

Please note that all existing zones will be removed before new zones are placed automatically.

Channel Type

There are three different types of channels to choose from: Normal, Counting and Pulse.

Normal Channel

The normal channel detects presence in the zone. This means that as soon as the leading edge of the vehicle breaks the plane of the leading edge of the zone, the channel will be activated (see Figure 8.7).

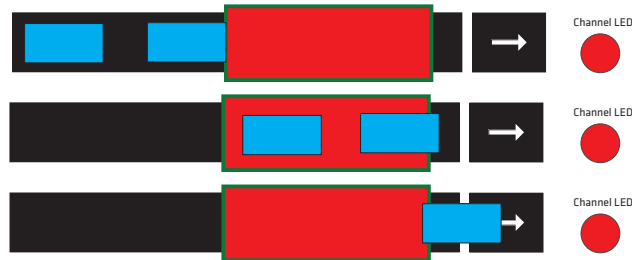


Figure 8.7 - Normal Channel

If there are no delay or extend settings, the zone will remain activated until all cars have exited the zone.

Counting Channel

A counting channel counts each vehicle that passes through the zone. The channel is activated once the middle of the vehicle crosses the leading edge of the zone (see Figure 8.8).

Note

If you use a counting channel, you need to position the zones so that the vehicle is detected and tracked before it arrives at the zone. Also, fast-traveling vehicles may not be counted as accurately as slow-moving vehicles.

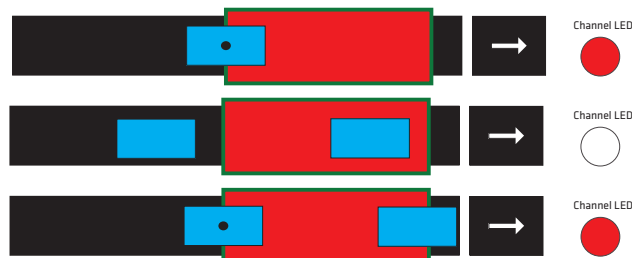


Figure 8.8 - Counting Channel

Once you select a counting channel type, the delay and extend settings will be disabled.

Pulse Channel

A pulse activates the channel for a very short period of time once the front edge of the vehicle crosses the leading edge of the zone (see Figure 8.9). You can configure how long you would like the pulse to be by changing the pulse channel width setting (see Figure 8.13). A new pulse will only be sent after a car enters a zone when the zone is empty.

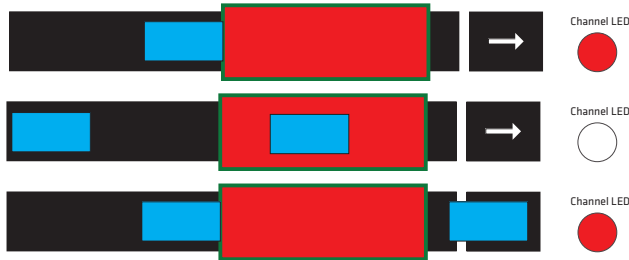


Figure 8.9 – Pulse Channel

Even though the zone stays activated, the contact closure call will only stay on for the time specified in the pulse channel width setting. You can verify the duration of the pulse channel calls by viewing the virtual LEDs in the SSMM software. Once you have selected the pulse channel type, the extend setting will be disabled.

Note

A pulse channel may be difficult to view in the SSMM software. The default pulsed channel width is 200 ms. To better view the pulse channel activation, increase the pulsed channel width in the output settings window (see the Output Settings section below).

Mapping Zones to Channels

After the zones are placed, the zones must be mapped to output channels. Channel mapping is described in the following sections.

Zone/Channel Map

The Zone/Channel map allows you to map or un-map zones to channels (see Figure 8.10). To map a zone to a channel, determine which zone you want to map to which channel and click on the gray indicator in the Zones/Channels table. A zone is mapped to a channel only if the corresponding indicator is green. To see Channels 9–16, click and drag anywhere inside the table.

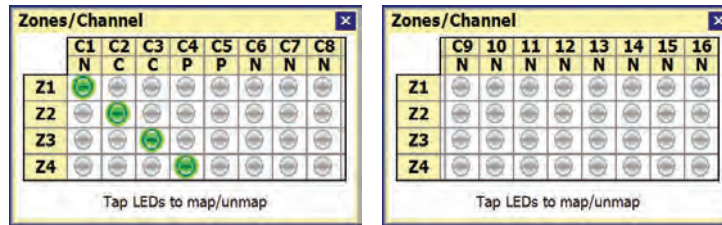


Figure 8.10 - Zone/Channel Map Window

Each channel column contains channel number and channel type (N=normal, C=count, P=pulse). Click on the individual zones in the zone column to highlight the zones in the edit area.

Editing Channels

The **Edit Channel** button will allow you to choose the channel type, map/un-map zones to a selected channel, and change delay/extend settings (see Figure 8.11). Click on the Z1–Z16 indicators to map a zone/zones to the channel (only the configured zones will be visible). Click on the channel indicator in the top-left corner or the **Edit Channel** button to quickly cycle through channels.

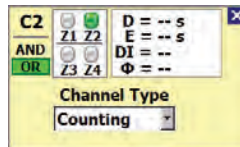


Figure 8.11 - Edit Channel Window

The Edit Channel window also allows you to do the following:

- **AND/OR** – Channels support AND and OR logic for all zones. Using the AND logic means that all the selected zones have to be active for the channel to be triggered; the OR logic means that any activity in any zone will trigger the channel. Click on the **AND** or **OR** button to change the logic.
- **Delay/Extend Settings** – Delay and extend settings can be viewed and then edited for a selected channel. The channel delay is used to ignore alert outputs that are shorter than the specified delay time. The extend feature is used to continue a channel output after the required conditions have been met. The delay and extend settings will be disabled for all counting channels and the extend setting will be disabled for all pulse channels.

To edit the extend and delay, click anywhere in the white box with the D and E, and the corresponding box will appear (see Figure 8.12). Manually edit or use the up/down buttons to change the delay/extend settings.

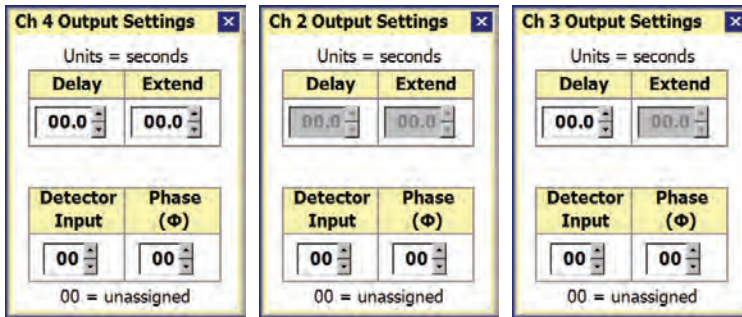


Figure 8.12 – Output Settings (Normal, Counting, Pulse)

- **Detector Input** – The Detector Input number provides a way for you to map inputs to the intersection phase in the controller. By default, the **Detector Input** will be set to “00;” if the input is left at “00,” then it is unassigned. This setting is for reference purposes only and does not actually change the sensor.
- **Phase** – Since the SmartSensor Matrix is capable of monitoring more than one phase, this setting allows you to enter the phase number that most closely represents the phase the sensor is monitoring. By default, the **Phase** will be set to “00;” if the phase is left at “00,” then it is unassigned. This setting is for reference purposes only and does not actually change the sensor.
- **Channel Type** – This drop-down list allows you to select the type of channel (Normal, Counting or Pulse). A normal channel is presence detection; a counting channel is a special pulse based on counting algorithms; and a pulse channel is a generic pulse based on zone presence.

Output Settings

The extend and delay settings can also be specified using the **Output Settings** button. This button will open a window that will allow you to select individual channels to edit and also to specify the minimum pulse width and pulsed channel width (Figure 8.13). The minimum pulse width is the minimum duration a presence detection will be signaled via the contact closure rack cards. The pulsed channel width is the duration the contact closure message lasts for a pulse or counting channel. All output settings are specified in seconds.

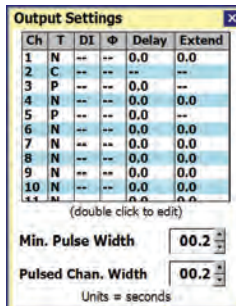


Figure 8.13 – Output Settings Pop-up

The dashes in the table mean that those particular settings are disabled due to the selected channel type. Double click on any channel row to change the output settings for that channel.

Measuring Zones

The SSMM software contains a feature that allows you to see how large a zone is as well as a number of other distance measurements. Click on the ruler icon at the top of the Zones & Channels window and then click on the zone you would like to measure and the zone's dimensions will appear (see Figure 8.14).

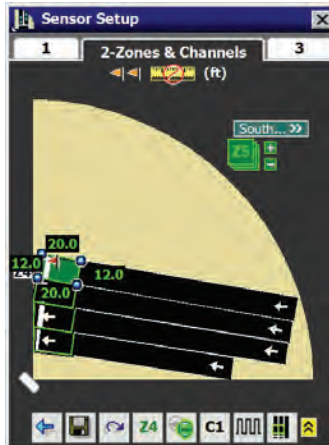


Figure 8.14 - Zone Measurements

Flags

A red and blue flag will also appear once a zone is selected. These flags can be used to measure the distance from that zone to anywhere in the edit area. These flags will be saved to the sensor.

Two additional flags are also available near the ruler icon. These flags can be dragged anywhere on the edit area and used to measure anything in the sensor's view (see Figure 8.15). These flags will NOT be saved to the sensor.

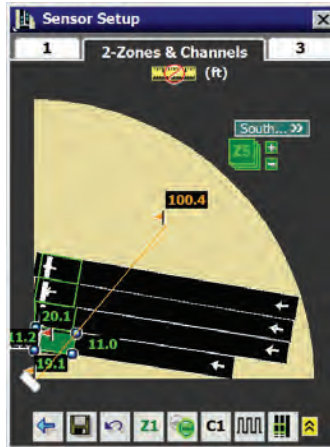


Figure 8.15 - Using Flags

In this chapter

- Channel Indicators
- Verification Menu Bar

After the configuration is complete, you will need to verify that the sensor was configured correctly. To verify lane configuration and channel mapping, click on tab 3. This will bring up the Verification window (see Figure 9.1).

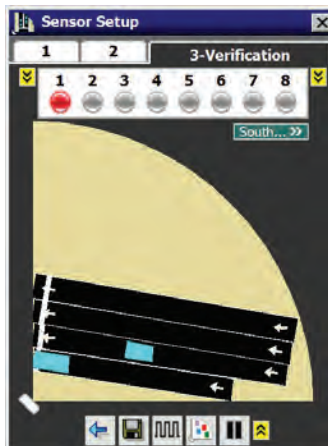


Figure 9.1 – Verification View

In the Verification window, vehicle detections will appear as light blue rectangles. The extent of these detections will vary based upon the length of the detected vehicle and the length of queued traffic.

Vehicle detections in a stopped queue are represented by a stationary light blue rectangle.

Channel Indicators

When detections enter a zone, they will cause the indicators for the channel mapped to that zone to turn red. To see the zones mapped to a particular channel, select that channel by clicking on its indicator (see Figure 9.2). Active zones for the selected channel will be red; inactive zones for the selected channel will be gray. Click on the yellow button on either side of the channel indicators to see channels 9–16.

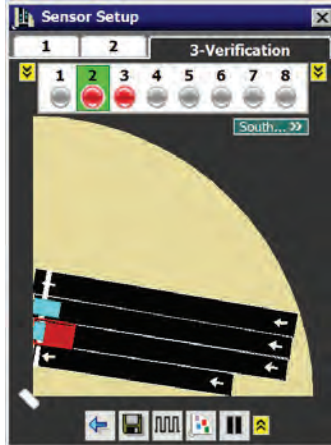


Figure 9.2 – Channel Verification

Note

Only the zones for selected channels will appear. If zones are not mapped to any channel, they will not be seen in the Verification window.

To see the delay/extend, logic and detector input/phase settings for a single zone, click and hold on a channel indicator and the following window will appear (see Figure 9.3).

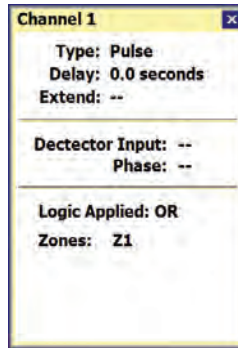


Figure 9.3 - Delay and Extend Zone Settings

When vehicles stop before and after a zone, the stopped vehicle queue is extended to fill the space between the two vehicles. This ensures that a queue of vehicles that extends in front and behind a zone will always activate the zone even if the vehicles are not directly over it (see Figure 9.4).

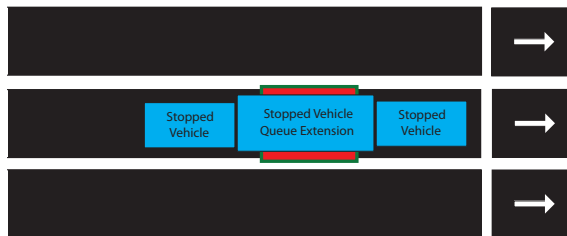


Figure 9.4 - Two Vehicles Stopped With a Zone in Between

If a vehicle stops within 30 feet of the stop bar, then the stopped vehicle queue will be extended to the stop bar. This ensures that a vehicle will activate a zone even if it stops behind the zone (see Figure 9.5).

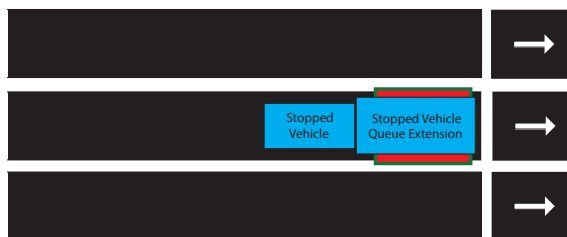


Figure 9.5 - A Vehicle Stopped Behind the Stop Bar

Verification Menu Bar

As on the Edit Lanes & Stop Bar screen, you can use the menu bar to save a configuration,


undo your last edit, edit thresholds and pause/play traffic (see Figure 9.6). Click the  button at the right side of the menu bar to see a window with menu descriptions.



Figure 9.6 – Verification View Menu Bar

The Verification menu bar contains the following options:

- **To Main Menu** – Returns you to the main menu.
- **Save Config** – Saves the zones and channel mapping to the sensor.
- **Channel Info** – This screen will show you presence counts and channel information in table form (see Figure 9.7). These counts are not saved on the sensor, but this shows how many times the channel has been actuated since you opened the Channel Info window.

Count	Ch	T	DI	Delay	Extend
0000	1	P	--	0.0	--
0000	2	N	--	0.0	0.0
0000	3	N	--	0.0	0.0
0000	4	N	--	0.0	0.0
0000	5	N	--	0.0	0.0
0000	6	N	--	0.0	0.0
0000	7	N	--	0.0	0.0
0000	8	N	--	0.0	0.0

Figure 9.7 – Channel Info Screen

- **Edit Thresholds** – Allows you to edit sensor thresholds (see Chapter 7 for more information about editing thresholds).
- **Pause Traffic** – Suspends or resumes movement of vehicle detections on the screen.

Note

The SSMM interface cannot accurately show all pulsed outputs unless the pulsed channel width is greater than 500 ms. If the SSMM software misses a counting pulse, the counts will not be accurate. The software only reports what it receives through its messages.

In this chapter

- Backup/Restore
- Rack Cards Tools
- Tracker Logging
- Sensor Self Tests

The Tools screen allows you to back up or restore your sensor configuration, log vehicle detections, and perform several other functions (see Figure 10.1). When connected to a sensor, all the options will be active except for the **Rack Card Tools** option. When a sensor connection is not active, the **Rack Card Tools** option will be available but the other options will not.

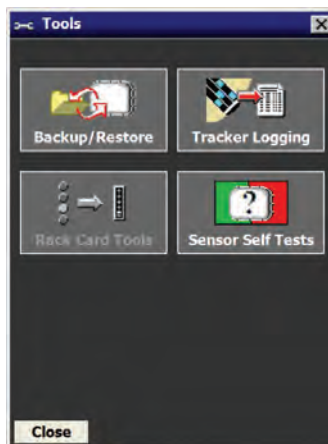


Figure 10.1 – Tools Screen

Backup/Restore

To back up or restore the sensor settings that you have changed, click the **Backup/Restore** button on the Tools screen (see Figure 10.2).

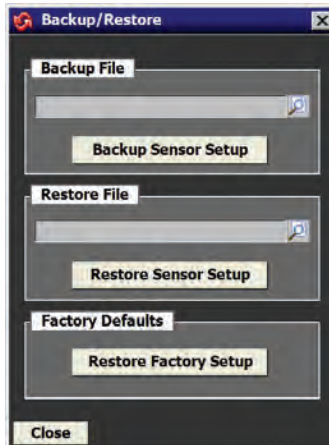


Figure 10.2 – Backup/Restore

To create a backup, click on the magnifying glass icon in the Back-up File section. Choose a destination, type in a filename for your new backup and click OK, then click the **Back-up Sensor Setup** button.

Note

The backup will appear as an .mxc file. While this file can be opened as a text file by using Notepad, do not edit the file, as it will change the settings you backed up.

The restore function allows you to restore a set of sensor settings you have backed up. To restore, click on the magnifying glass icon in the Restore File section. Select the backup file you wish to restore and click **OK**, then click the **Restore Sensor Setup** button.

Warning

Restoring sensor settings will cause you to lose the settings previously on the sensor, unless they are backed up.

To restore the sensor to factory defaults, click the **Restore Factory Setup** button on the bottom of the screen.

Rack Cards Tools

Access tools for working with rack cards and other contact closure devices by clicking the **Rack Card Tools** button on the Tools screen when a sensor connection is NOT active (see Figure 10.3).



Figure 10.3 – Rack Card Tools

The Rack Card Tools screen allows you to verify that you have the correct channel mapping into the traffic controller, without being connected to a sensor. Serial data messages sent by the rack card tool reach the rack cards via a T-bus and the patch cord connections from the Click 222 control bridge to the contact closure cards.

Since this tool can be used without a sensor, it can reduce the amount of time spent on-site when installing a SmartSensor Matrix system. You can use the rack card tool to verify rack card connections while cable is being pulled through conduit or the sensors are being installed.

Note

When used with SmartSensor Matrix, the rack cards should be configured to communicate at the default 9600 bps. If you are having communication issues, you may want to verify that the rack cards are configured to communicate at 9600 bps.

Using the Rack Card Tool

To search for Click 112/114 rack cards or a Click 104 contact closure device using the rack card tool:

- 1 Click on the **Settings** button and select the correct communications port and baud rate (see Figure 10.4).

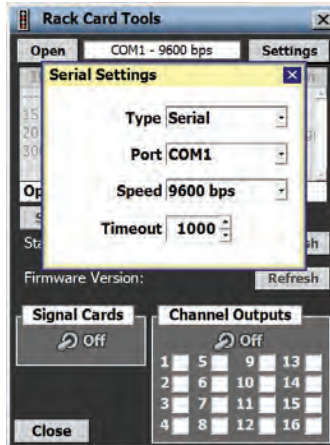


Figure 10.4 - Rack Card Tool Serial Settings

- 2 After you have entered the correct settings, close the Serial Settings window and click the **Search** button.
- 3 Once a list of devices appears, click on the desired row. You can identify a device by its ID, Device, Description or Location fields. If you would like to communicate to all the devices, select **All Rack Cards** in the device column.

Status

The Status field indicates whether the rack card is operating normally or whether it is in fail-safe mode. If the device is in fail-safe mode, the text message may help you understand why the device is in fail-safe. For example, if the text reads “Failsafe Initializing,” this indicates that the rack card has never seen any detection call messages since it was rebooted. If the message reads “Failsafe Timeout (No Data),” this indicates that the rack card was previously receiving detection calls, but hasn’t received any in the last 10 seconds or more. The message will always say “Timeout: (No Data)” when you are connected to the Rack Card Tools.

Firmware Version

The Firmware Version field lists the version of the rack card firmware. When you would like to refresh the status of these fields, click the associated **Refresh** button. If you are communicating with all devices, the status and firmware version fields are not applicable (N/A).

Signal Cards Switch

You can use the Signal Cards toggle switch to help single out devices. When the switch is ON, all main menu LEDs on the selected devices will begin flashing. If you have selected All Rack Cards, then the main menu LEDs of every card connected on the bus will begin flashing.

Channel Outputs Switch

The Channel Outputs toggle switch and 1–16 checkboxes are used to help assist in testing of the rack card outputs.

If the Channel Outputs switch is ON, all the selected channel outputs on the Click 112/114 rack card or Click 104 contact closure device will be active. The LEDs that indicate an active output channel will light up accordingly. An output will only be active when the corresponding box is checked.

Note

It is recommended that you disable pushing by sensors or disconnect the detection call bus patch cord for each sensor before using this tool. Otherwise, the rack card may be receiving conflicting calls on its other bus.

The Channel Outputs switch can be very helpful in verifying the I/O channel mapping from the rack card outputs to the traffic controller inputs. By sequentially checking boxes 1–16, you should be able to quickly verify the mapping of each channel, even in the absence of traffic.

Tracker Logging

Access the Tracker Logging tool by clicking on the **Tracker Logging** button on the Tools screen. This tool will allow you to log vehicle detections as they are tracked through the sensor's view (see Figure 10.5). This tool can be used to record trackers and replay them at a later time for demonstration purposes.



Figure 10.5 - Tracker Logging Tool

This tool records vehicle detections as shown on the Verification page. Recorded vehicle detections can be used later for playback using a virtual connection.

Click on the open folder icon to select a log file. The Select Tracker Log File screen allows you to specify the name of an existing log file or to create a new file (see Figure 10.6).

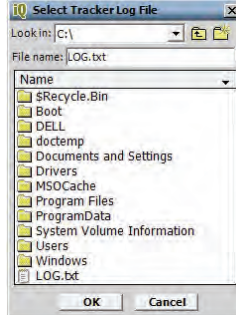


Figure 10.6 – Select Detection Log File Screen

Click the ON/OFF toggle switch icon to the ON position to begin logging vehicle detections. Once activated, the duration of the logging session is displayed on the timer display. Click the toggle switch to the OFF position to end a logging session.

The vehicle detection log file is an ASCII text file and can be viewed using a standard text editor. Click on the **View Log** icon to view the current log file using the system's default text editor (see Figure 10.7).

```

File version=590TrackerLogFile1.0.0.12
Firmware version=virtual

-----
serial Number: 55225102621049
Location: virtual Intersection
Approach: Northbound
Description: Virtual Demo Sensor
-----

DATE          TIME          ID          LANE          POINT1          POINT2
(Cyyy-mm-dd) (hh:mm:ss.ms) (#) (A) (X: Y) (X: Y)
-----
2011-04-27 13:37:23.162 3 1 24.0: 56.0 9.0: 57.0
2011-04-27 13:37:23.357 3 1 24.0: 56.0 9.0: 57.0
2011-04-27 13:37:23.468 3 1 24.0: 56.0 9.0: 57.0
2011-04-27 13:37:23.542 3 1 24.0: 56.0 9.0: 57.0
2011-04-27 13:37:23.552 3 1 24.0: 56.0 9.0: 57.0
2011-04-27 13:37:23.780 3 1 24.0: 56.0 9.0: 57.0
2011-04-27 13:37:23.839 3 1 24.0: 56.0 9.0: 57.0
2011-04-27 13:37:23.887 3 1 24.0: 56.0 9.0: 57.0
2011-04-27 13:37:24.027 3 1 24.0: 56.0 9.0: 57.0
2011-04-27 13:37:24.184 3 1 24.0: 56.0 9.0: 57.0
2011-04-27 13:37:24.250 3 1 24.0: 56.0 9.0: 57.0
2011-04-27 13:37:24.351 3 1 24.0: 56.0 9.0: 57.0
2011-04-27 13:37:24.445 3 1 24.0: 56.0 9.0: 57.0
2011-04-27 13:37:24.527 3 1 24.0: 56.0 9.0: 57.0
2011-04-27 13:37:24.623 3 1 24.0: 56.0 9.0: 57.0
2011-04-27 13:37:24.723 3 1 24.0: 56.0 9.0: 57.0
2011-04-27 13:37:24.855 3 1 24.0: 56.0 9.0: 57.0
2011-04-27 13:37:24.965 3 1 24.0: 56.0 9.0: 57.0
2011-04-27 13:37:25.042 3 1 24.0: 56.0 9.0: 57.0
2011-04-27 13:37:25.158 3 1 24.0: 56.0 9.0: 57.0
2011-04-27 13:37:25.279 3 1 24.0: 56.0 9.0: 57.0
2011-04-27 13:37:25.330 3 1 24.0: 56.0 9.0: 57.0
2011-04-27 13:37:25.374 3 1 24.0: 56.0 9.0: 57.0
2011-04-27 13:37:25.523 3 1 24.0: 56.0 9.0: 57.0
2011-04-27 13:37:25.680 3 1 24.0: 56.0 9.0: 57.0
2011-04-27 13:37:25.742 3 1 24.0: 56.0 9.0: 57.0
2011-04-27 13:37:25.837 3 1 24.0: 56.0 9.0: 57.0
2011-04-27 13:37:25.878 3 1 24.0: 56.0 9.0: 57.0
2011-04-27 13:37:26.024 3 1 24.0: 56.0 9.0: 57.0
2011-04-27 13:37:26.128 3 1 24.0: 56.0 9.0: 57.0
2011-04-27 13:37:26.269 3 1 24.0: 56.0 9.0: 57.0
2011-04-27 13:37:26.350 3 1 24.0: 56.0 9.0: 57.0
2011-04-27 13:37:26.438 3 1 24.0: 56.0 9.0: 57.0
2011-04-27 13:37:26.539 3 1 24.0: 56.0 9.0: 57.0

```

Figure 10.7 – Log File

Sensor Self Tests

The Sensor Self Tests screen allows you to check the sensor to verify it is working properly (see Figure 10.8). To run the sensor self test, click the **Run Sensor Self Tests** button.

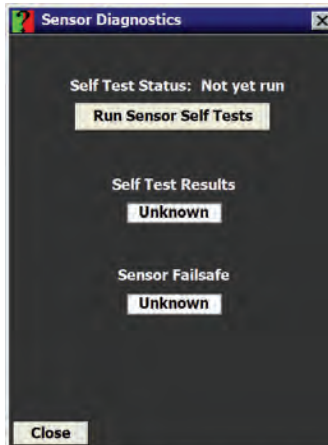


Figure 10.8 – Sensor Diagnostics

The test results will appear as either “Success” or “Failed” (see Figure 10.9). If the sensor fails a sensor self test, contact Wavetronix Technical Services for assistance.

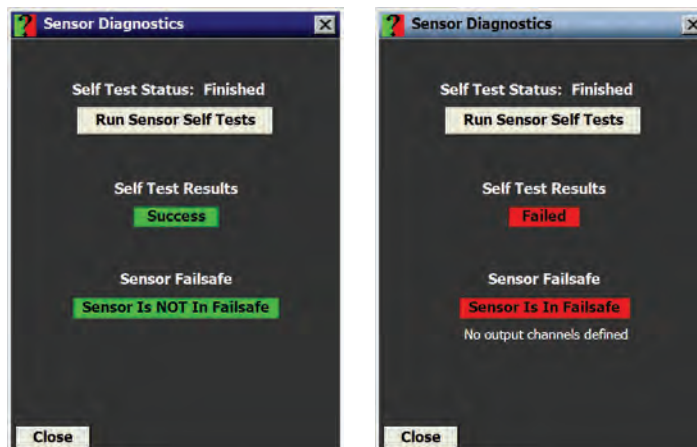


Figure 10.9 – Sensor Self Tests (Success and Failed)

Appendix

In this chapter

- Appendix A –Cable Connector Definitions
- Appendix B –Cable Lengths
- Appendix C – Click 221 User Reference Guide
- Appendix D – Click 600 Installation
- Appendix E - Matrix Extended Range

Appendix A – Cable Connector Definitions

The connector end of the SmartSensor 6-conductor cable mates to the 8-pin connector on the SmartSensor Matrix (see Figure A.1).

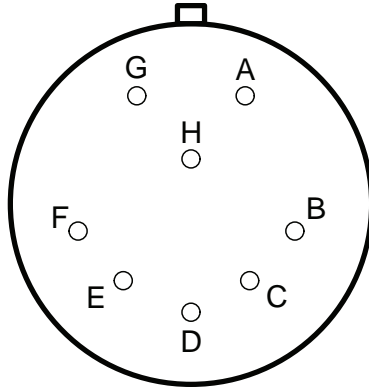


Figure A.1 – SmartSensor Matrix Connector

The SmartSensor 6-conductor cable has seven wires. Table A.1 details the pinout of the cable connector and the corresponding wire in the cable. The sensor itself also contains internal wires that connect to the protective earth lug.

Pin	Cable Wire	Signal Description
A	Red	DC+
B	Orange and white stripe	Data bus 485+ (Sensor port 2)
C	Orange	Data bus 485- (Sensor port 2)
D	Drain / Shield	Drain
E	Blue	Control 485- (Sensor port 1)
F	Blue and white stripe	Control 485+ (Sensor port 1)
G	Black	Common (Ground)
H	----	Reserved

Table A.1 – Pinout for Power and Communication Signals

Creating Custom Cables

Proper connector crimping tools are necessary to create custom cables. The SmartSensor 6-conductor cable connector uses a MILC-C-26482 Series 1 connector, crimping contacts and a watertight back shell. A kit with these parts can be ordered directly from Wavetronix.

Size 20 contacts are used to accommodate the 20 and 22 AWG wires in the cable. (The SmartSensor 6-conductor cable’s red and black wires provide a 20 AWG wire pair. The other pairs on the SmartSensor 6-conductor cable are 22 AWG and are normally used for communication.)

Follow the steps below to create a custom cable (see Figure A.2):

- 1 Slide the strain relief, follower, grommet and back shell over the cable.
- 2 Strip the cable jacket and shielding back about 11/2 in. (4 cm).

- 3 Strip each of the seven SmartSensor cable wires back about 1/4 in. (0.6 cm).
- 4 Insert the wires into the contacts and verify the wire is visible through the contact inspection hole.
- 5 Crimp the wires by following the crimping tool instructions. Daniels Manufacturing Company provides professional grade crimping tools and detailed instructions on crimping. Wavetronix recommends the DMF AF8 M22520/1-01 or equivalent tool for crimping.
- 6 Manually press the contacts into the back side of the connector plug.
- 7 Use a DMC DAK20 (or equivalent) insertion tool to fully seat the contact into the connector plug. Check the mating face of the connector to ensure that all the contacts are fully inserted. A DMC DRK20 extractions tool (or equivalent) is necessary to remove a misplaced or misaligned contact.
- 8 Thread the back shell onto the connector plug. To keep the connector from rotating during the threading process, connect the plug and coupling ring to a sensor connector receptacle.
- 9 Press all of the connector parts together. Thread the strain relief onto the back shell.
- 10 Tighten the strain relief screws on the back.



Figure A.2 - Connector Sub-assembly Parts

Appendix B - Cable Lengths

It is recommended that the sensor be powered by 24 VDC to achieve reliable operation up to 500 ft. (152.4 m) away. Table B.1 lists maximum cable lengths for 12 and 24 VDC.

Power Wire Gauge	24 Volts	12 Volts
20 AWG	500 ft. (152.4 m)	90 ft. (27.4 m)

Table B.1 - Maximum Cable Length for Power (ft)

For communications, both of the sensor's RS-485 communication ports operate at 9600 bps.

Note

Contact Wavetronix Technical Services if you have a need for a cabled connection over 500 ft. (152.4 m).

Appendix C – Click 221 User Reference Guide

The Click 221 is a DC 8 A surge protector (8 A is the maximum rating of a T-bus connector). The DC source voltage and PE (protective earth) should be wired into the screw terminals on the bottom side of the device. A 12 AWG protective earth wire is recommended. The device works with up to 8 A of continuous current at a maximum of 28 VDC.

Note

This appendix covers the basics of the Click 221. For a full explanation of how to use the Click 221, see the Click Series User Guide.

Outgoing DC- voltage onto the T-bus is protected from electrical surges incoming from the DC+ and DC- screw terminals. These terminals do not have reverse-polarity protection, but assumes that all downstream devices will have proper polarity protection. The surge protection meets the IEC 61000-4-S 4KV (Class 4) specification.



Figure C.1 – Click 221

The LED on the faceplate will be on if the device is properly powered and the surge protection is operational (see Figure C.1). The LED will be off if the DC wires are wired

backwards (reverse polarity), the device is not powered or the surge protection circuitry is no longer operational. If the LED flickers on and then off when power is applied, this means that the device is conducting power, but the surge is no longer fully functional. When the surge is no longer fully functional, please contact Wavetronix Technical Services for assistance.

Appendix D – Click 600 Installation

The Click 600 cabinet interface device is a single, compact module that performs all the functions of the preassembled backplates: power conversion, surge protection, and sending detection data to the appropriate contact closure devices.

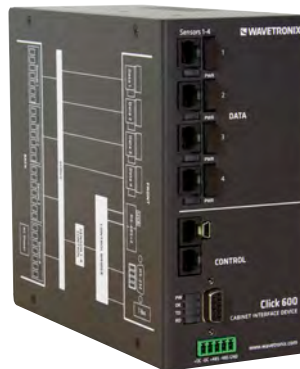


Figure D.1 – Click 600

The Click 600 is a shelf-mount device, meaning it's meant to be set on a shelf in the traffic cabinet. However, if you'd prefer to affix it to the wall of a NEMA-style traffic cabinet, attach the included U-channel mounting brackets to the device and use them to mount it on the cabinet wall.

Connecting AC Power

Included with the Click 600 is an AC power cord. Connect it from your AC power source to the IEC connector on the back of the device. The Click 600 will take that AC power and convert it to DC, then send that power to any connected sensors (which run on 10–28 VDC).

Warning

Make sure power to AC mains is disconnected while wiring the AC input.

Next to the IEC connector is a switch that turns power on and off for the whole device.

Next to each sensor connector is a switch that turns power on and off for the associated sensor. During normal operation, be sure that all appropriate switches are turned on.

Caution

An authorized electrical technician should install the preassembled backplate. Persons other than authorized and approved electrical technicians should NOT attempt to connect the backplate to a power supply and/or traffic control cabinet, as there is a serious risk of electrical shock through unsafe handling of the power source. Extreme caution should be used when connecting the backplate to an active power supply.

The Click 600 has a connector for a 5-position screw terminal, which can be used to power other Click devices in the cabinet; this will be covered in greater detail in the Using the Control Bus to Configure the Sensors section of this appendix.

Providing Surge Protection

You don't need to do anything to get the surge protection running; just be aware that this device provides protection for the cabinet from surges coming in on the sensor cables. (Each SmartSensor Matrix has its own onboard surge protection.)

Terminating the SmartSensor 6-conductor Cable

Each Click 600 can interface with up to four sensors. On the back of the device are four connectors, as shown below.



Figure D.2 – Click 600 Sensor Connectors

If you look at the side of the Click 600, you'll see on the label that these four sensor connectors are labeled as 1 through 4. These connectors are where you'll plug in the sensor cables.

Terminating the cables in these connectors provides the sensors with DC power, lets you configure the sensor, and lets the sensor send its detection data back to the cabinet.

Before you can plug in the cables, you'll need to terminate each one into the terminal blocks included with your Click 600. The method for doing this is identical to the method used with the preassembled backplates, so for detailed instructions on how to terminate the cables, please see the Terminating SmartSensor 6-conductor Cables section in chapter 2 of this guide.

Note

You'll note, however, that chapter 2 refers to part of the terminal block plug being blue. This is the only spot where the two terminal block sets differ; the Click 600 terminal blocks won't have any blue portions.

Once the cables have been properly terminated into the terminal blocks, plug them into the connectors on the back of the Click 600. Keep track of which connector corresponds to which sensor.

Connecting the Data Ports to Contact Closure Devices

If you look at the faceplate of the device, you'll notice that it's divided into two buses: Data and Control. The data bus is for taking detection data from the sensors and sending them to contact closure devices; the control bus allows users to connect to the sensors to configure them.



Figure D.3 - Data Bus

The data bus faceplate interface consists of four RJ-11 jacks. Use the jumper cables included with your Click 600 to connect from these jacks to your contact closure devices. Informa-

tion on how to use contact closure devices can be found in chapter 3 of this guide.

Note

You don't have to do anything special to tell the device to push data on any port; all data received on any port is automatically pushed on all other ports.

The data bus portion of the faceplate also has the following features: next to each RJ-11 jack is a switch that turns power on and off to the associated sensor; under each jack is an LED that illuminates when the associated sensor has power.

Using the Control Bus to Configure the Sensors

The lower portion of the faceplate has the ports that make up the physical interface of the control bus. These ports allow you to configure any sensors connected to the Click 600. You can connect to the Click 600 and thereby to the sensors using any of the following options:



Figure D.4 - Control Bus

- **RJ-11 jacks** - The Click 600 has two RJ-11 jacks that allow you to connect via RS-485.
- **USB port** - Next to the RJ-11 jacks is a USB mini-B connector for connecting via USB.
- **DB-9 connector** - Under the USB port is a DB-9 connector for connecting via RS-232.
- **T-bus port** - At the bottom of the faceplate is a T-bus connector. You can use this to make the Click 600 part of a shared power and RS-485 communication bus. This isn't usually necessary because the Click 600 performs all basic necessary functions, but it is an option.

If you do intend on doing that, see the Click 100–400 Series User Guide for information about how to use a T-bus. Once you have your T-bus assembled and installed on a DIN rail somewhere in the cabinet, do the following:

- 1 Find five wires (or a cable) that will reach from the shelf to the T-bus; strip the ends

of each wire.

- 2 Insert each wire into one of the screw terminals on a T-bus 5-position connector. The terminals are all labeled for your ease.
- 3 Insert the other end of each wire into a second 5-position connector.
- 4 Plug one connector into the T-bus port on the Click 600; plug the other into the end of your T-bus.

Lastly, there are four LEDs on the faceplate. These LEDs have the following functions:

- **Red LED (PW)** - Illuminates when device has power
- **Blue LED (OK)** - Extinguishes if device has been disabled by surges
- **Green LED (TD)** - Illuminates when data is transmitted on the control bus
- **Yellow LED (RD)** - Illuminates when data is received on the control bus

Use these LEDs to monitor the state of the Click 600.

Appendix E - Matrix Extended Range

There are a few things that you should be aware of when using the SmartSensor Matrix with its new extended range.

Angle Resolution

At ranges of 0–100 feet, the angular resolution is sufficient to provide a ground range resolution that is close to the average width of a lane. This allows the sensor algorithms to distinguish between two vehicles traveling side by side in adjacent lanes.

As the range is extended, the ground resolution gets larger. At 140 feet, the smallest beam's footprint is about 11 feet and the outside antennas have a footprint of about 18 feet. This means that even though the center of the sensor's view may be able to detect adjacent targets, these same targets may not be detected when they are close to the edges of the sensor's view.

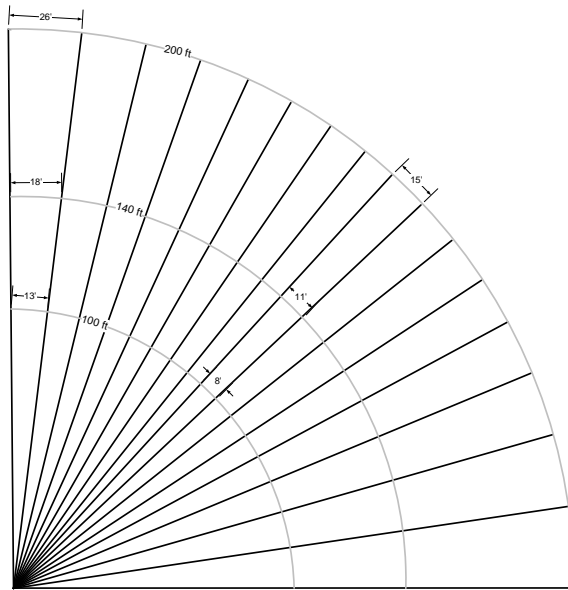


Figure E.1 – Matrix Beam Footprints

In an installation where the SmartSensor Matrix is installed in its preferred stop bar location, angular resolution will likely not be a problem. This is because as the vehicles approach the stop bar they will pass through the middle of the sensor's view and be resolved. Also, as the cars approach the stop bar they move into a more side-fire orientation to the beams and then can be resolved by their range differences.

Using the extended range to monitor two approaches puts the sensor in a position where it has to monitor lanes at its extreme edges. This is not a recommended application because the beams are the widest at the edge of the sensor's view, resulting in unfavorable angular resolution.

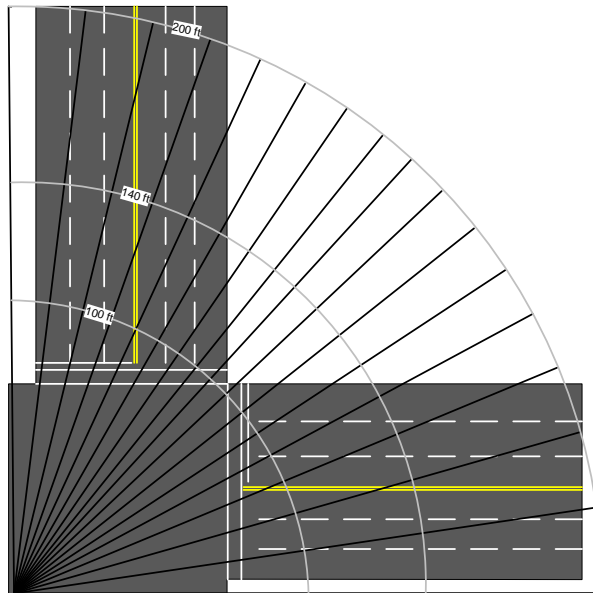


Figure E.2 – Dual Approach Monitoring

Signal-to-Noise Ratio and the Stop bar Effect

The SmartSensor Matrix collects data beyond its advertised range. However, the signal-to-noise ratio, or the signal-to-clutter ratio, is not large enough at the far ranges to consistently detect a vehicle. This means that even though the sensor does detect some energy, the UI doesn't show constrained trackers.

This will normally not affect sensor performance for stop bar applications when the sensor detects a stopped vehicle. However, the sensor does not allow new stopped trackers to be created within a certain distance of the stop bar unless it has been detected for approximately 15 seconds. This feature allows the sensor to prevent slow moving objects, such as pedestrians, bicycles and cars cutting the corner, from creating false detections. This is what is referred to as the "stop bar effect."

Occlusion

Occlusion becomes a bigger problem the farther the range. In the intersection, it is complicated by the fact that the vehicles can be stopped in a long queue, for example in a left hand turn lane, and the sensor may never see a vehicle passing in a farther lane.

If the range to the sensor of an object is doubled, then the amount of ground range that can be occluded by an object is also doubled.

Example

A semi truck is situated in a left turn lane and its far edge is 30 feet from the sensor. If the sensor is mounted 20 feet above the roadway and a 13-foot tall semi is in the lane closest to the sensor, then a vehicle that is 5 feet tall would be fully occluded within a 34 foot area. Now, in that same situation, if the lane is placed so that the far edge of the semi is at 60 feet, then the occluded ground range is doubled to 68 feet.

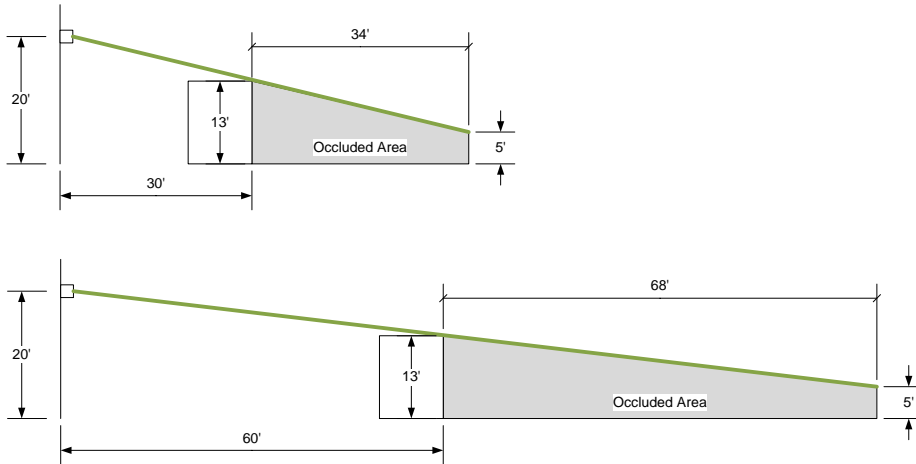


Figure E.3 - Doubling the range of an object to the sensor doubles its occluded area

Occlusion is also made worse by the stop bar effect, especially when trying to monitor two approaches at once. When traffic crosses in front of vehicles at the stop bar, they have the possibility of occluding the vehicles long enough to cause the detection to drop. If the detection drops, there will be a delay of approximately 15 seconds before the vehicles are "re-detected." The occlusion logic built into the sensor minimizes this to a certain extent, but it cannot overcome all situations.

As always, if you have questions regarding the suitability of a location for SmartSensor Matrix deployment, please contact Wavetronix Technical Services or your authorized Wavetronix dealer for assistance.