

EK-001BK Users Manual

(For Windows 95/98/ME)

Warning: FCC RF EXPOSURE REQUIREMENTS

In order to satisfy FCC RF exposure requirements for a mobile transmitting device this device and its antenna should maintain a separation distance of 20 cm or more from a person's body.

PRODUCT CONSTITUTION

FREEWING-RS Internal

SYSTEM REQUIREMENTS

Windows 95SE/98/ME/2000/CE

SAFETY INFORMATION

Rated power should be used.

Do not expose the set to direct sunlight or to
heat sources.

Do not use the set near high temperature and
humidity. Rain or drinking water spilled
on the set can result in hazards.

Do not use the set near the equipment having
magnetic force.

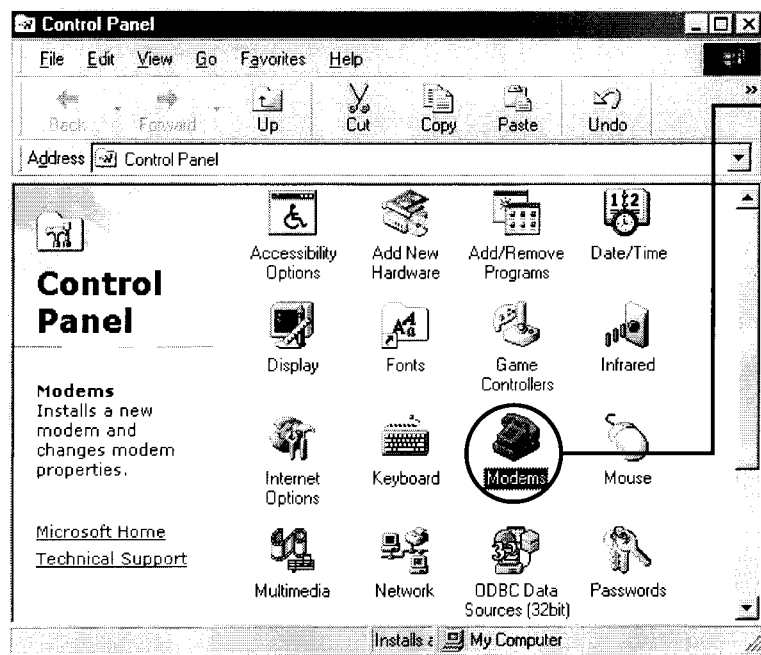
Do not use or spill the inflammables on the set.

Do not expose the set to vibration or
excessive shock. Keep the set in a safe place.

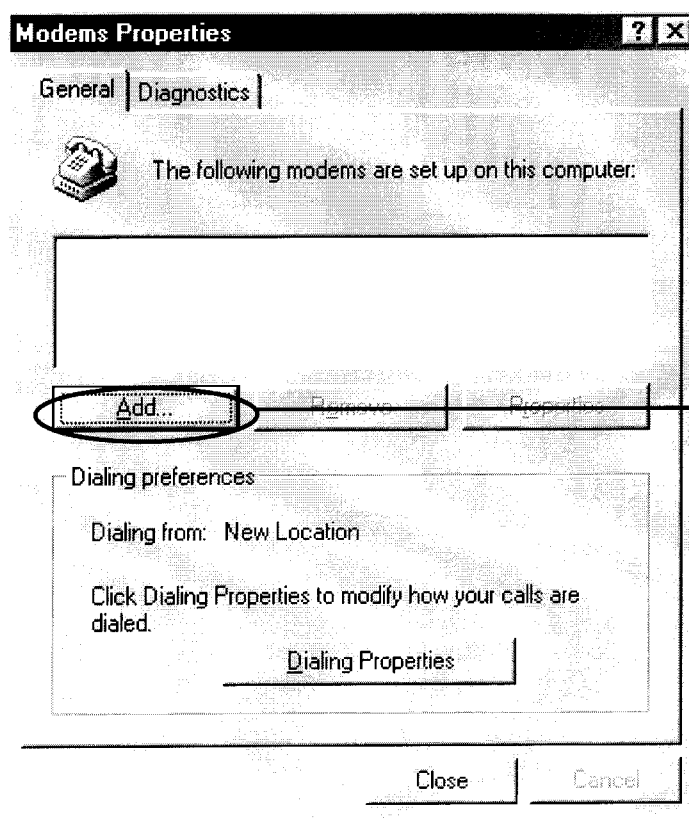
Do not disassemble or service the set without
permission.

ENVIRONMENT SETUP

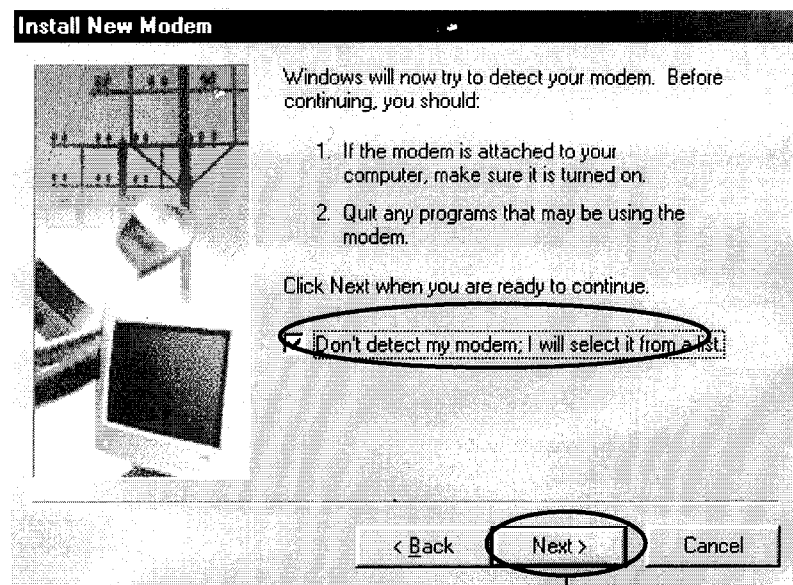
Modem setting



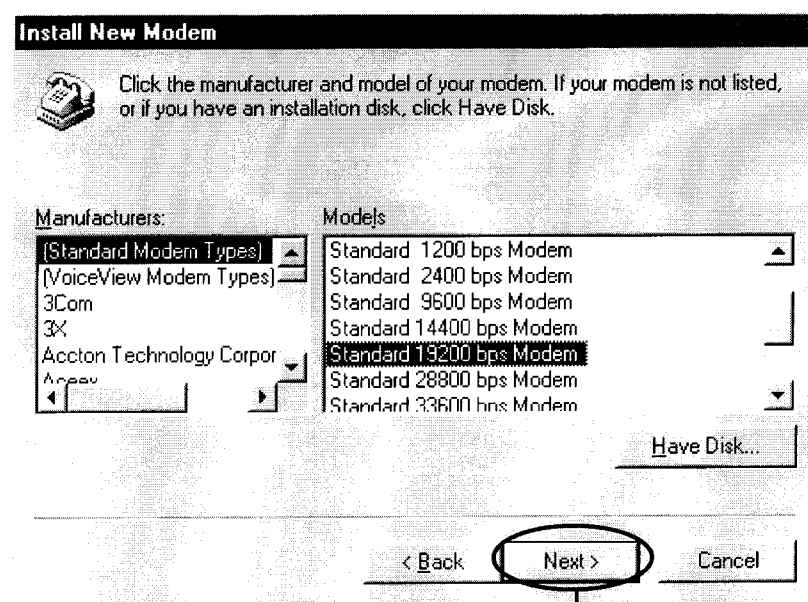
① Select 'Modem' in Control Panel menu of Windows 95/98.



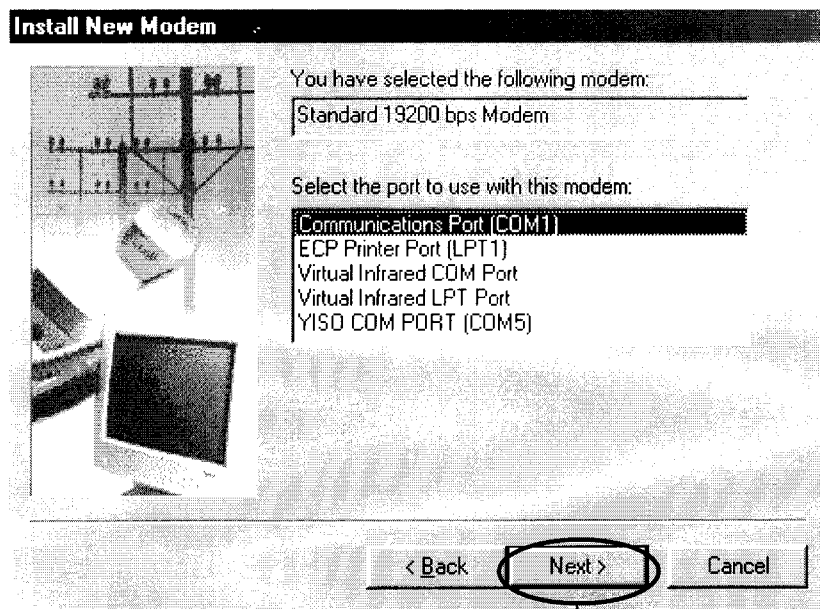
② click [Add].



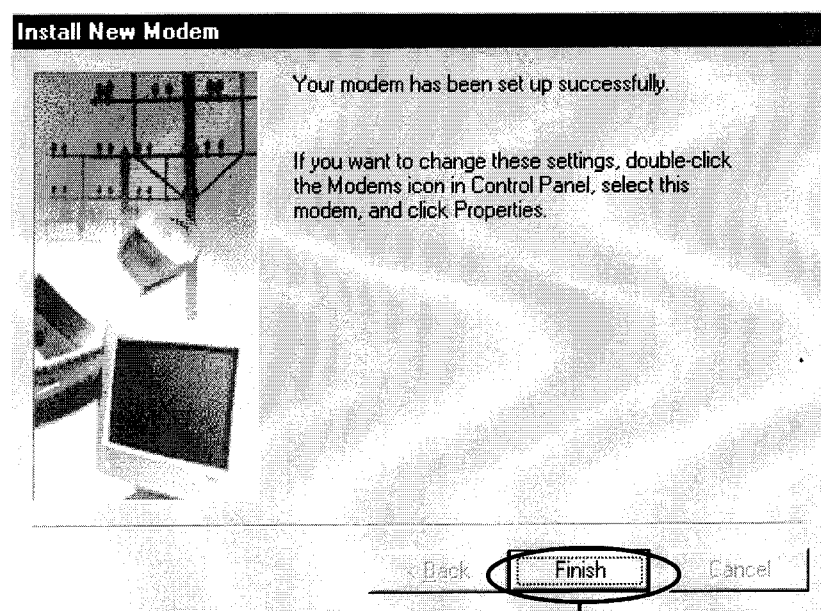
- ③ Select 'Don't run the Hardware Installation Wizard', then click [Next].



- ④ Select '(Standard Modem Types)' for manufacturers and 'Standard 19200 bps Modem' for models, then click [Next].

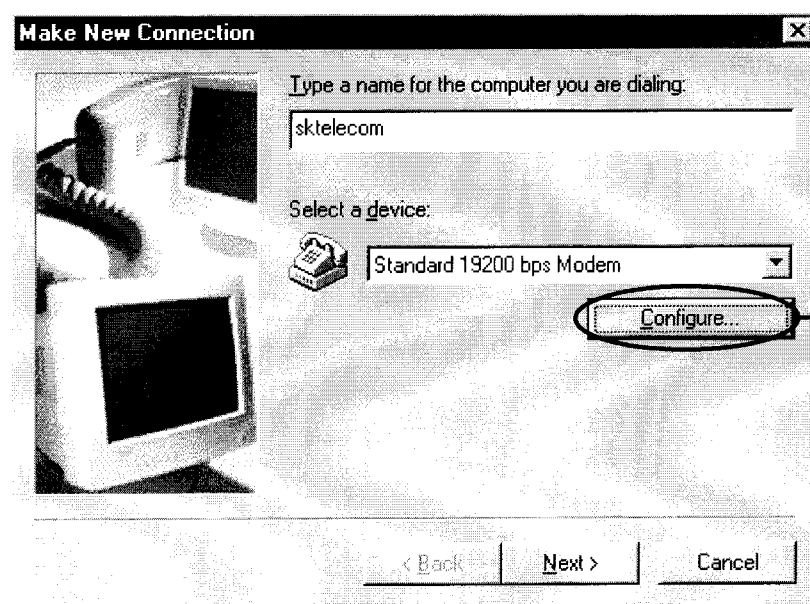
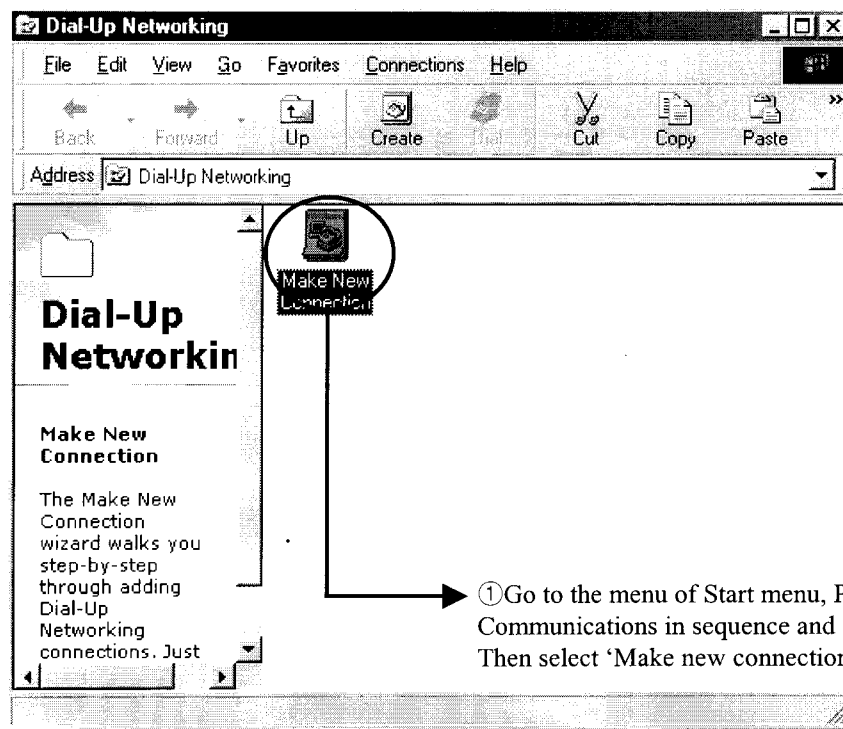


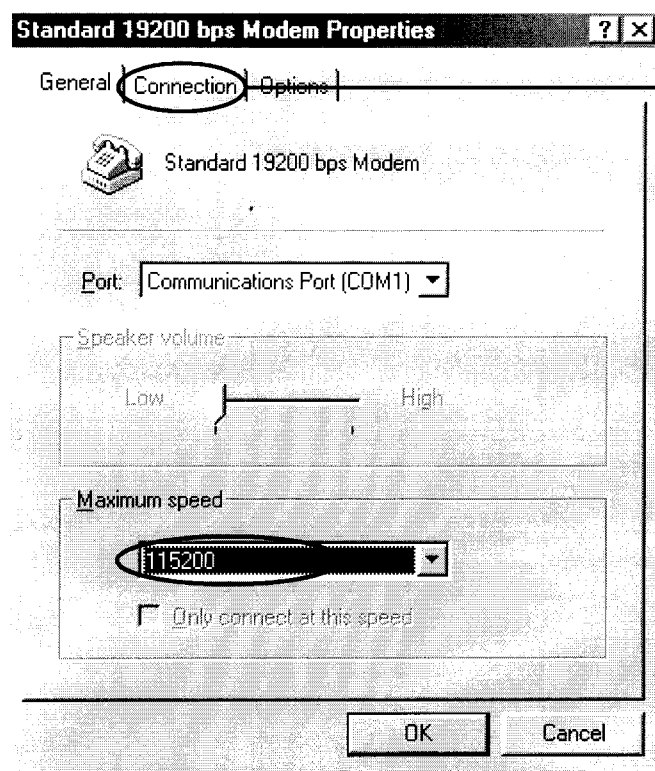
⑤ Select 'COM PORT (COM1)', then click [Next].



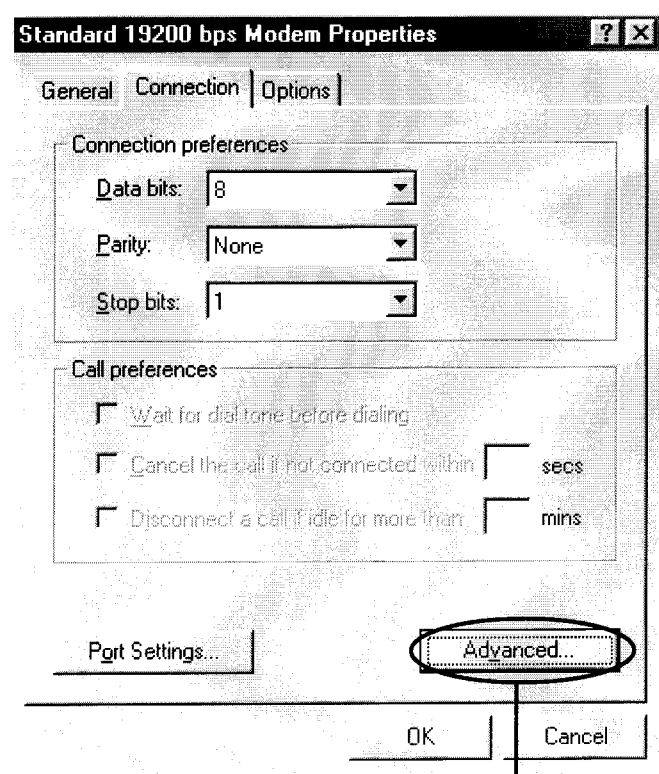
⑥ Modem installation has finished.

Dialup Networking

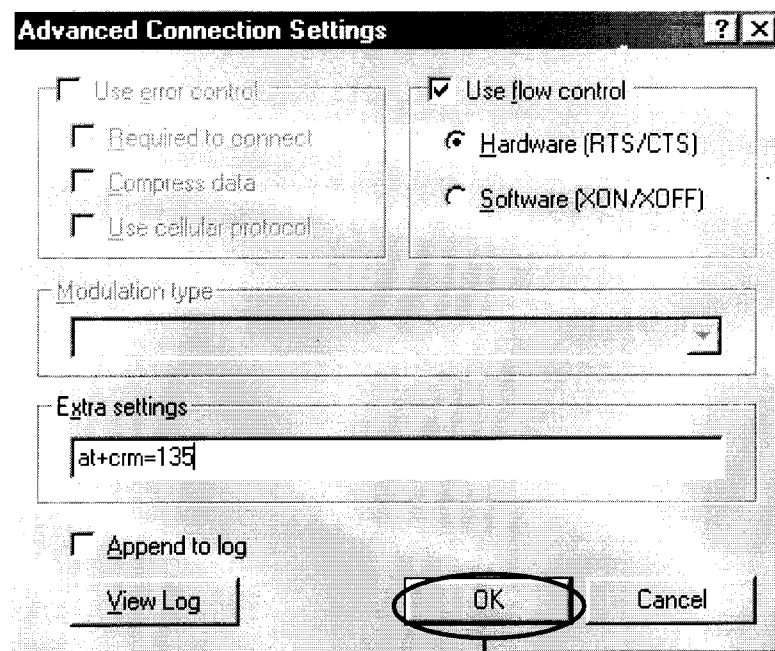




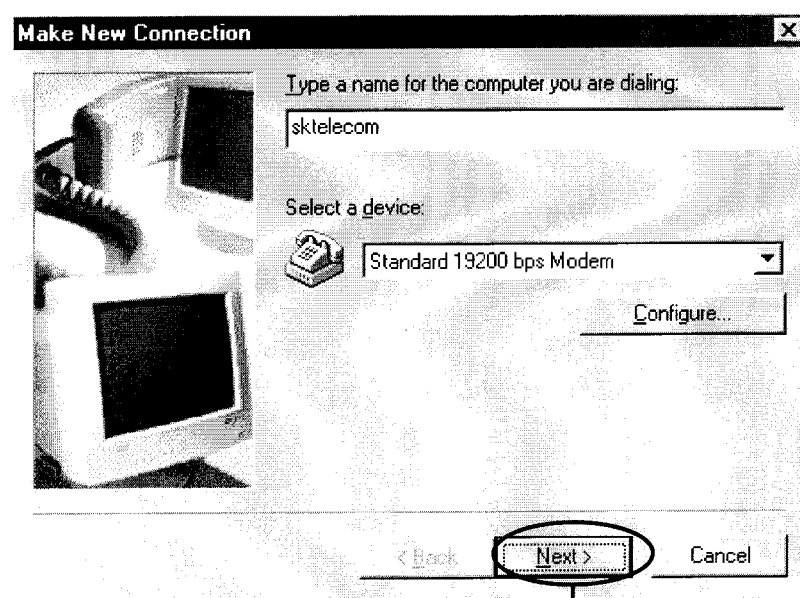
③ After confirming 'Communication Port (COM1)', select '115200' for 'Maximum speed(bps)', then go to 'Connection' folder.



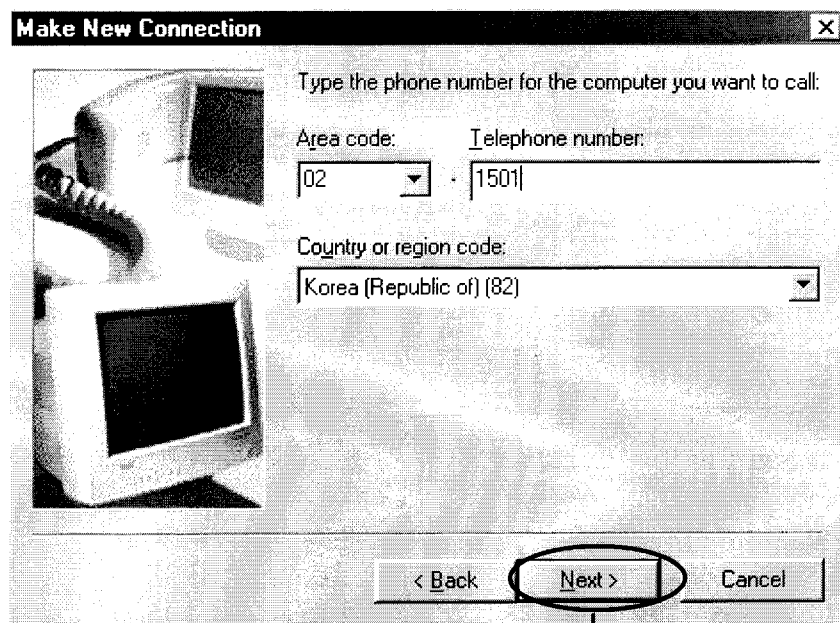
④ Click [Advanced].



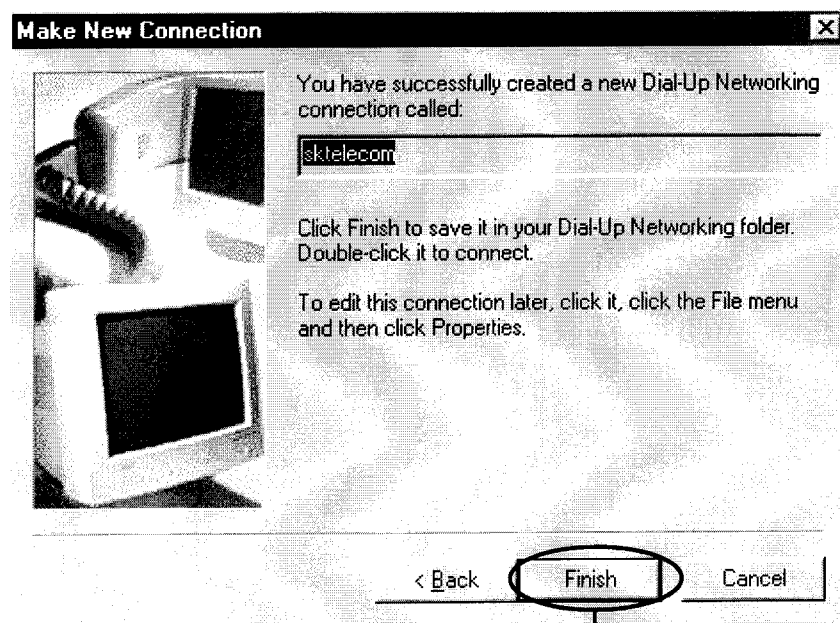
⑤ Type 'at+crm=135' at 'Extra settings', then click [OK] two times.



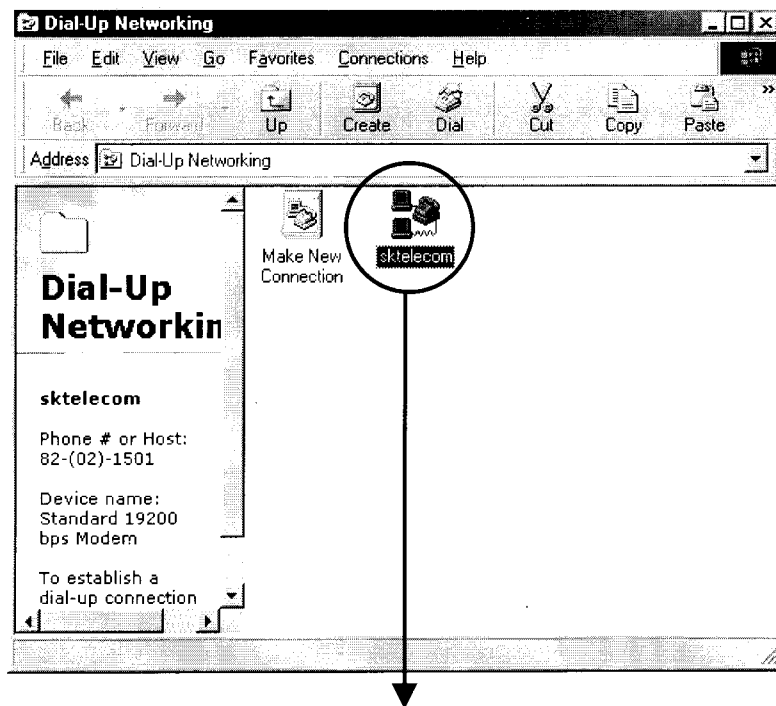
⑥ In 'Make New Connection' window, click [Next].



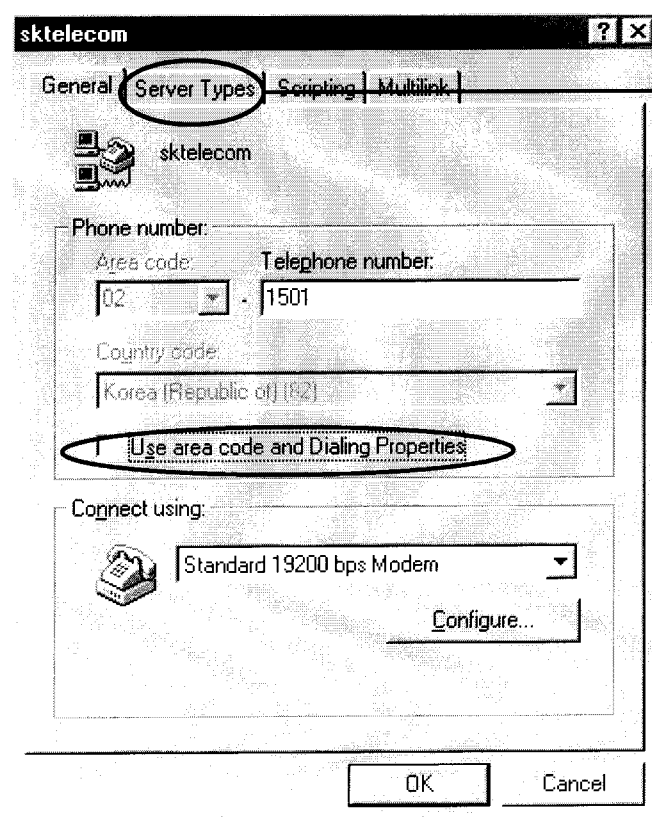
⑦ Type the telephone number (for Sktelecom, 1501), then click[Next].



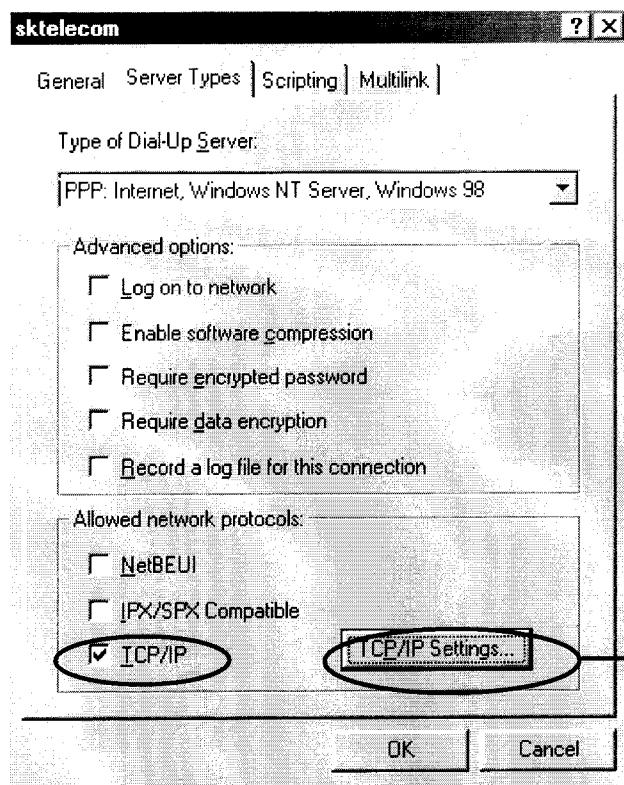
⑧ Click [Finish]. By these methods, setup has finished..



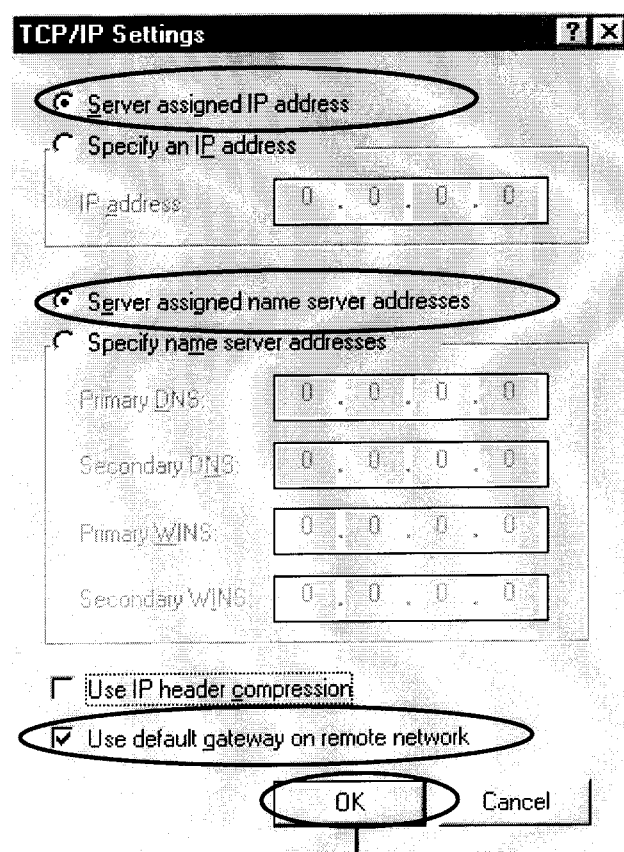
⑨ Click the 'Properties' of 'New' icon which is made in the 'Dial-up Networking' folder.



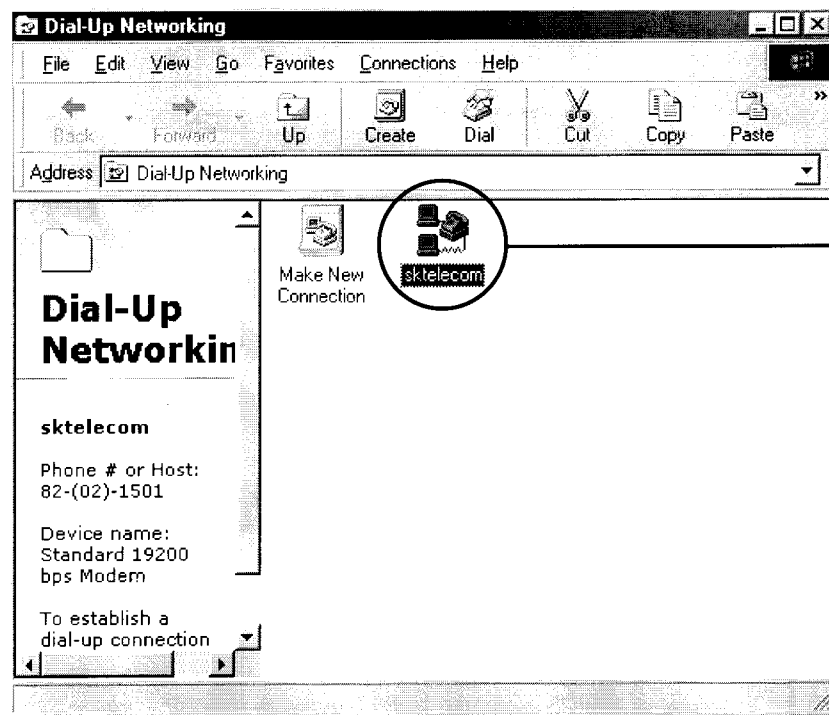
⑩ By clicking the right side of mouse, you can see 'Properties' menu. De-select 'Use area code and Dialing Properties' and go to 'Server Types' folder.



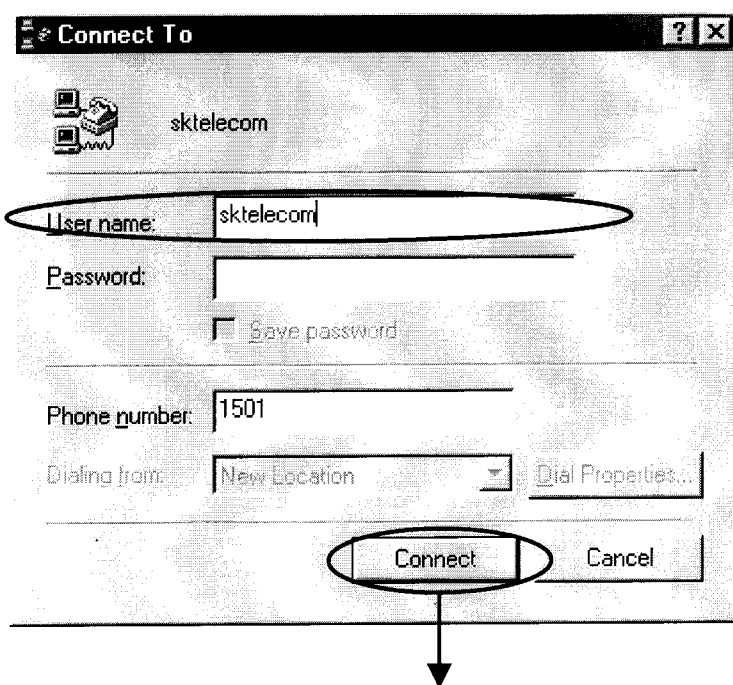
⑪ Select 'TCP/IP' for 'Allowed network protocols', then click [TCP/IP Settings...].



⑫ Select 'Server assigned IP address', 'Server assigned name server addresses' and 'Use default gateway on remote network'. Then click 'OK' two times.



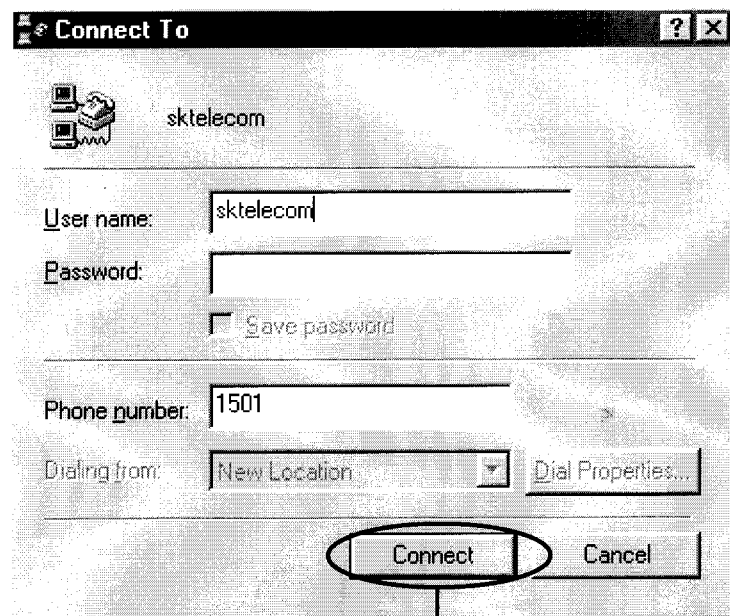
⑬ Double-click the new icon which is made in the 'Dial-up Networking' folder.



⑭ Type 'User name' and 'Password', then click 'Connect'.

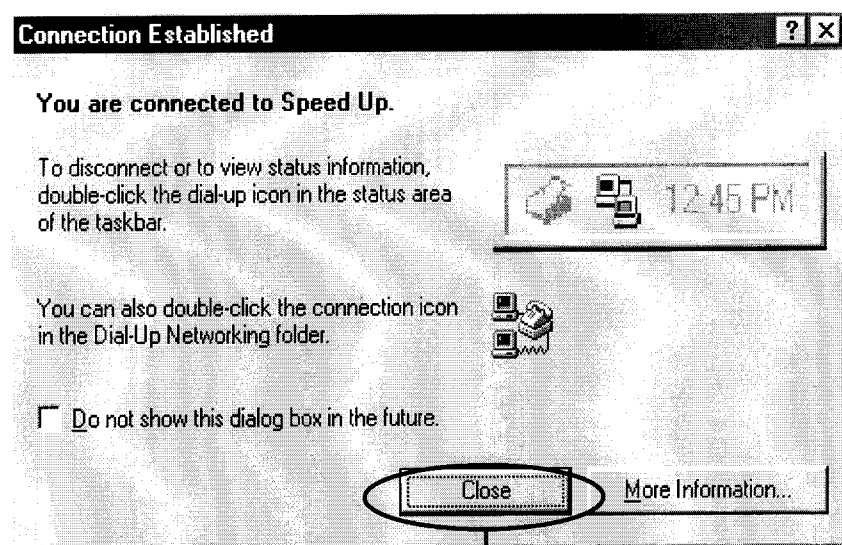
CONNECTION/DISCONNECTION

TO CONNECT



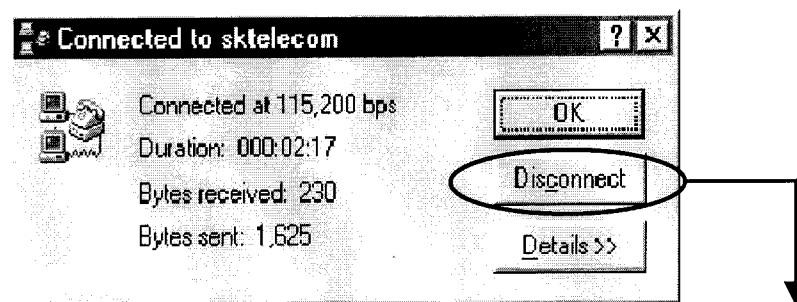
- ① Double-click new icon in [dial-up connection networking] at the right side of your mouse in background screen. In 'Connect ' window, click [Dial].





② Press "Enter" after connection

TO DISCONNECT



① Click [connection] icon at the right side of your mouse in the right bottom of start bars in background screen, then select 'Disconnect' at the left side of your mouse.