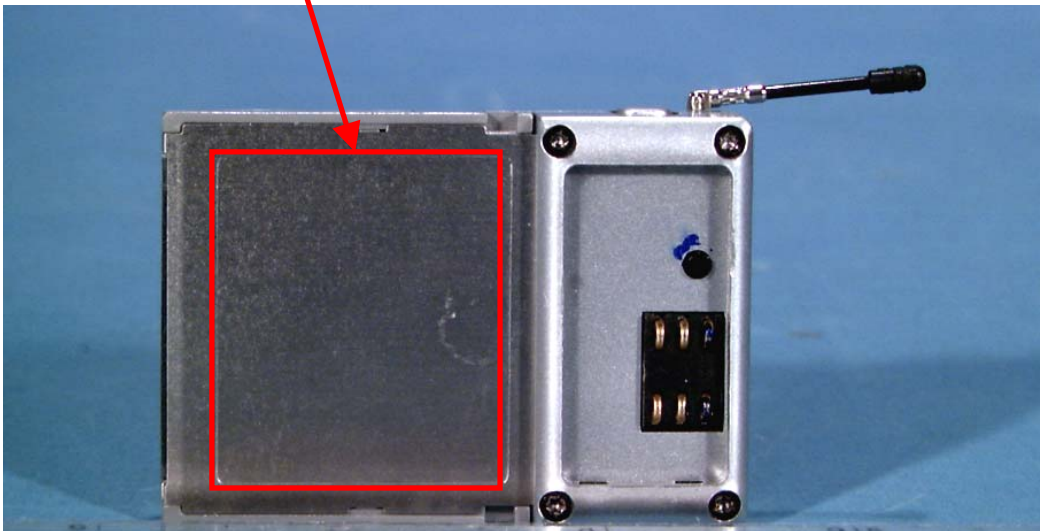


FCC ID SAMPLE LABEL & LOCATION

(SEE NEXT PAGE)

LABELLING REQUIREMENTS PER §§ 2.925

The Label shown shall be permanently affixed at a conspicuous location on the device and be readily visible to the user at the time of purchase.



FCC LABEL

YISO Telecom



Model : CF-2031, YM-2031U

FCC ID : PC6CF-2031

Serial No : (Pre-Production)

Development: YISO Telecom

Tested to comply
With FCC Standards

MADE IN KOREA

YISO TELECOM CO.LTD

FOR HOME OR OFFICE USE