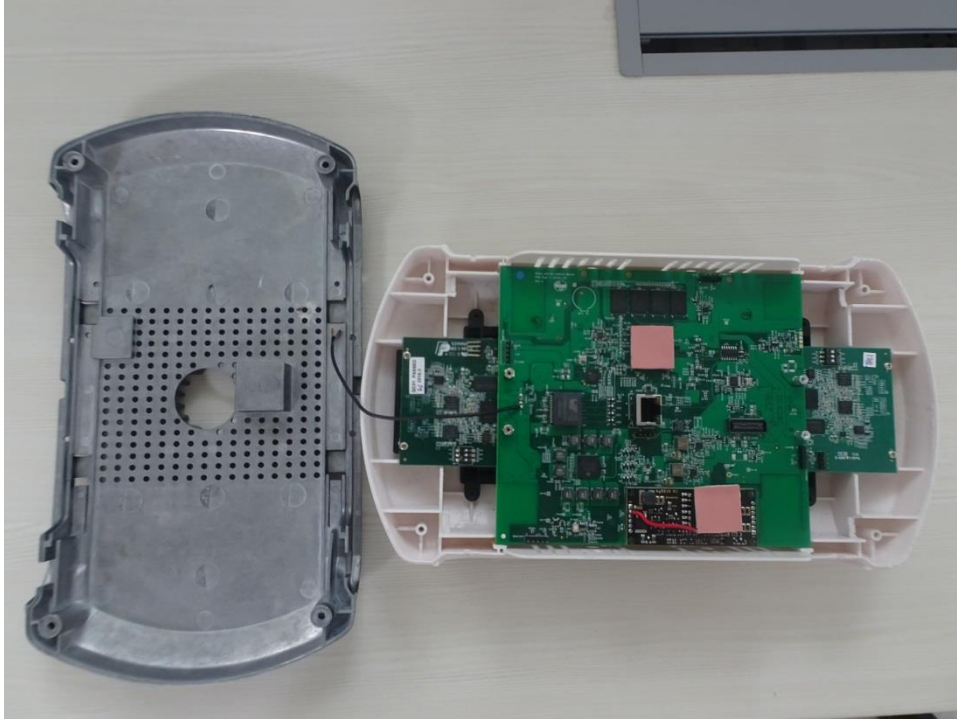
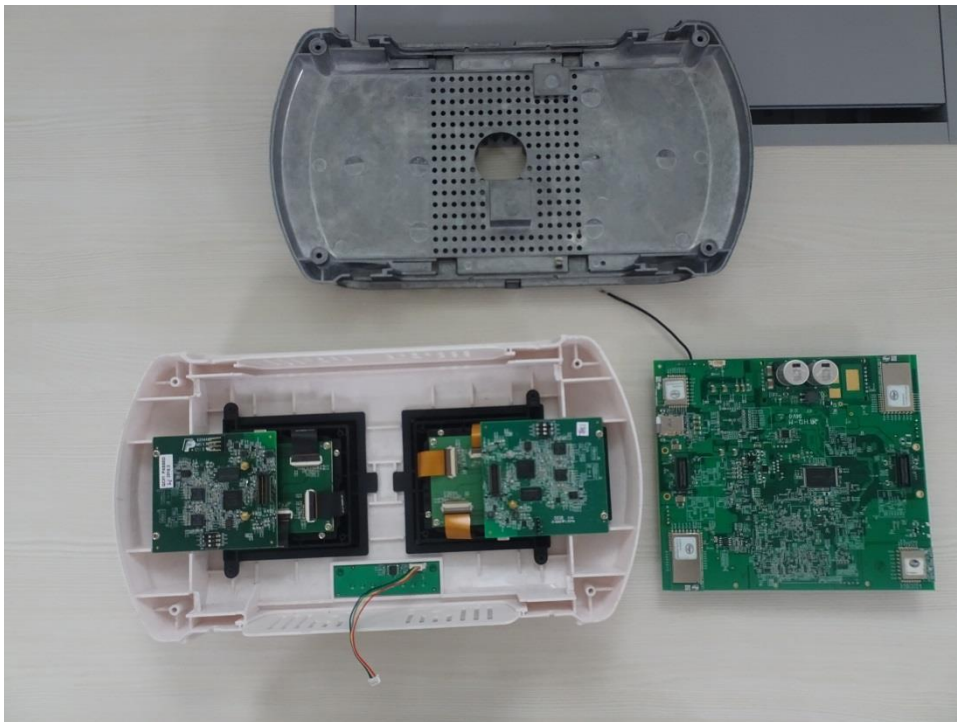


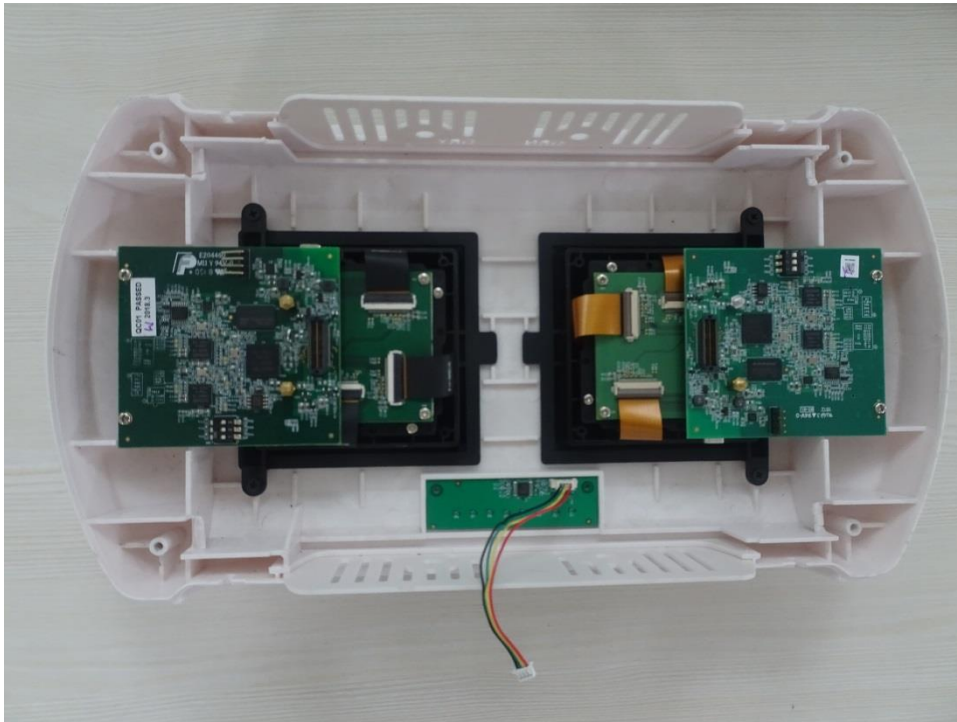
## 1 EUT Internal Photos



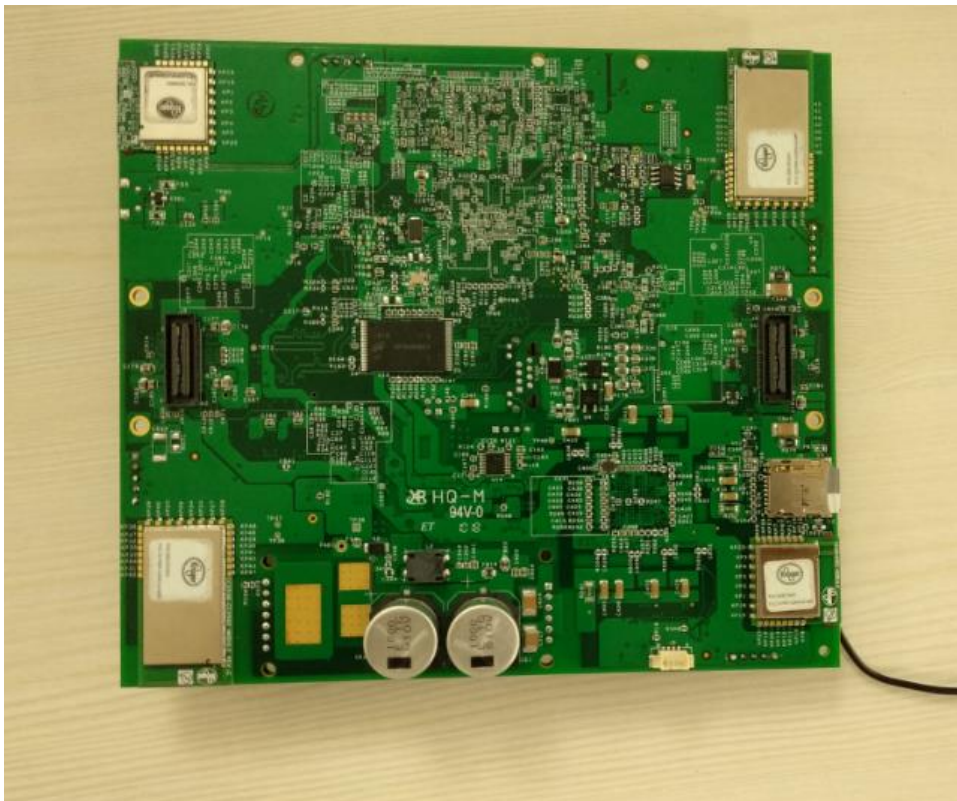
**Photo 1 : EUT back case removed**



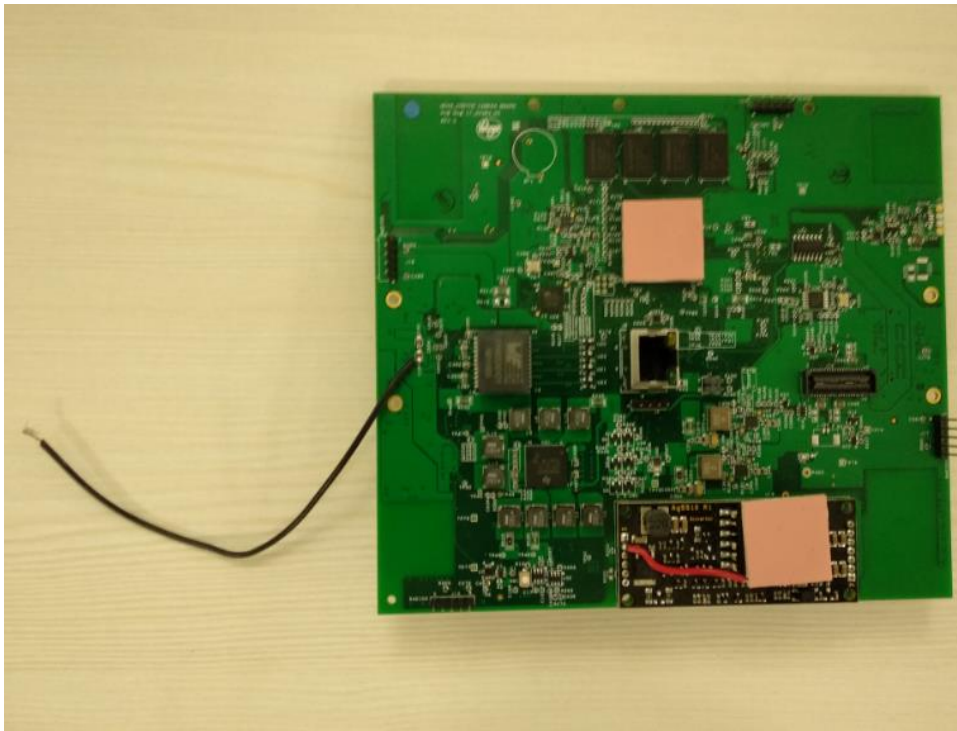
**Photo 2 : EUT's main PCB board removed**



**Photo 3 : Camera PCB boards**



**Photo 4 : RF module main PCB's front view**



**Photo 5 : RF module main PCB's rear view**



**Photo 6 : ZigBee Module**





**Photo 7 : ZigBee Module**



**Photo 8 : ZigBee Module**



**Photo 9 : BLE Module**