

1 EUT Internal

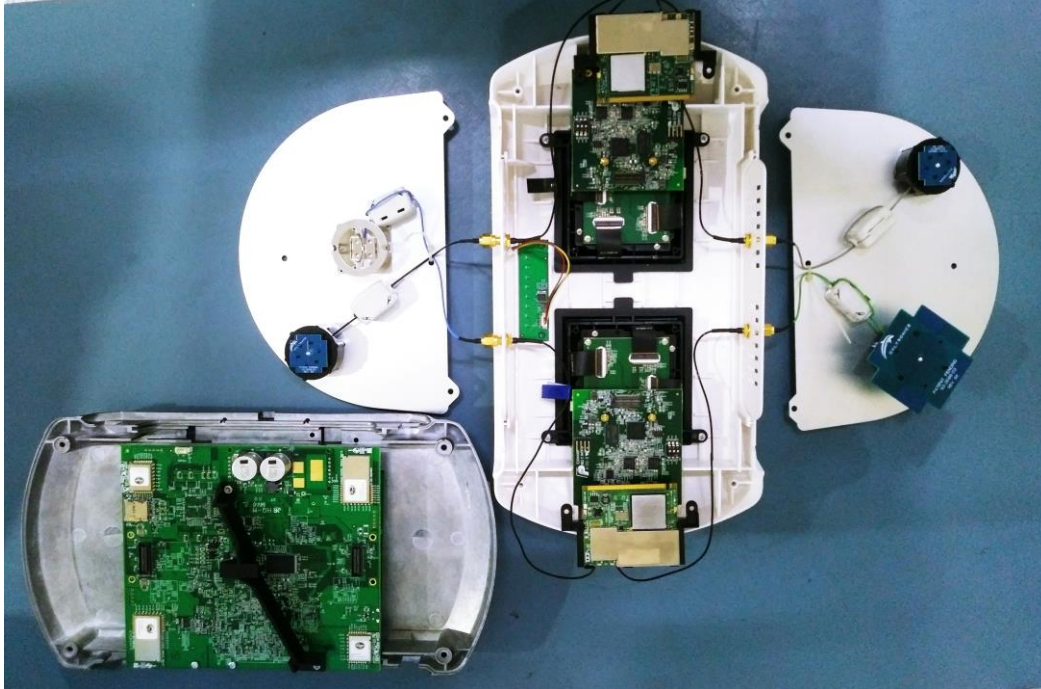


Photo 1 : EUT panel removed

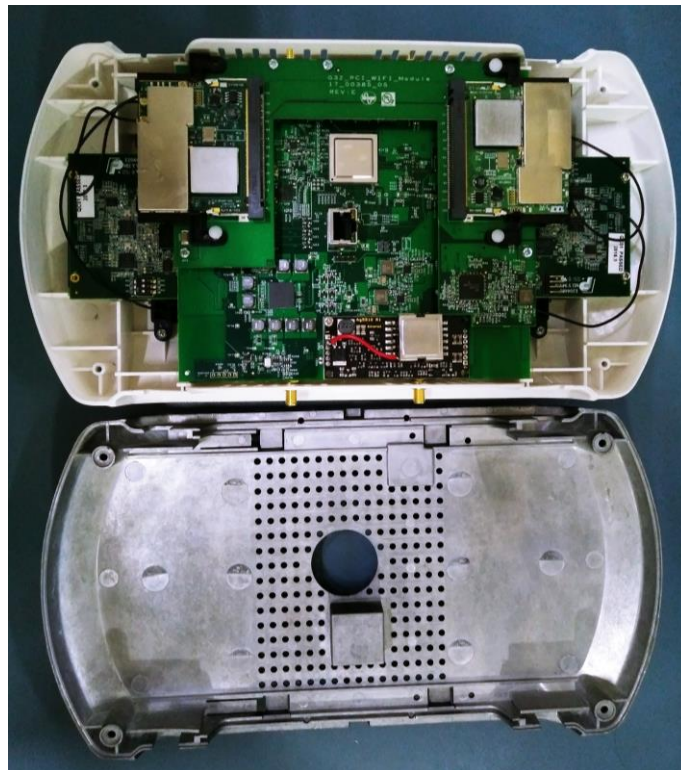


Photo 2 : EUT panel removed

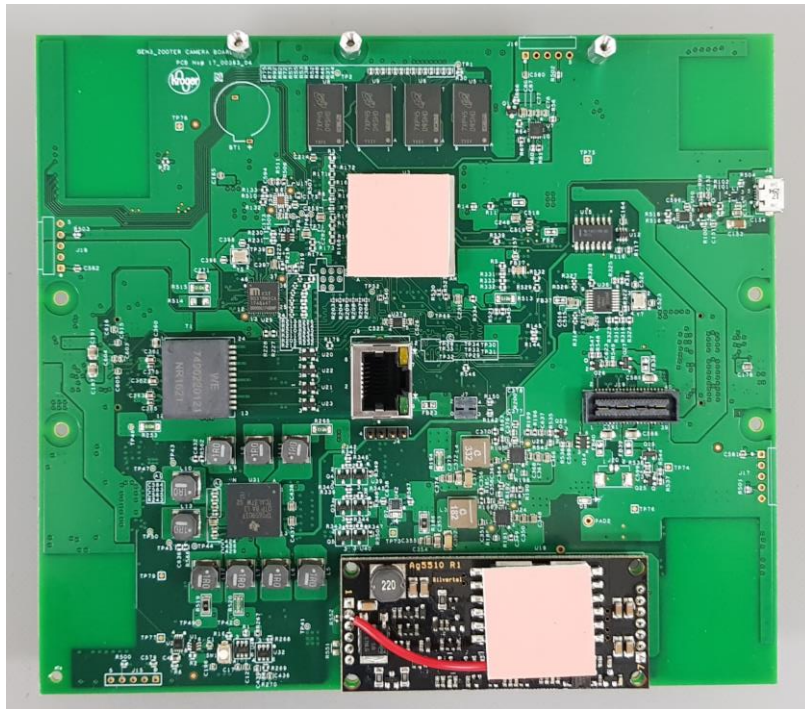


Photo 3 : PCB front view



Photo 4: ZigBee module



Photo 5: ZigBee module



Photo 6: BLE module



Photo 7: Wi-Fi (2.4 GHz) Module Front side



Photo 8: Wi-Fi (2.4 GHz) Module Back side



Photo 9: Wi-Fi (5 GHz) Module Front side

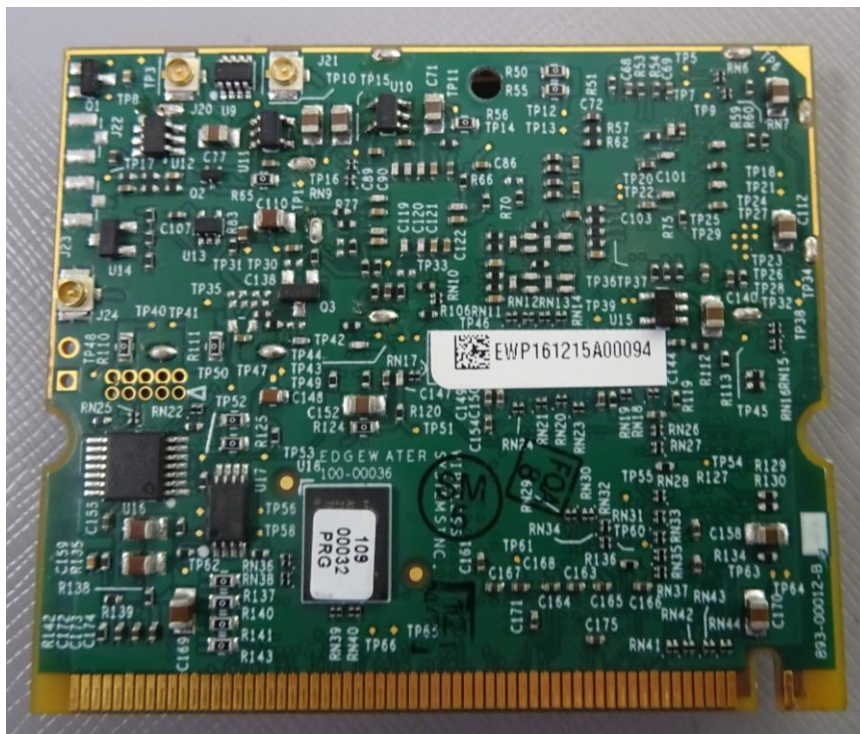


Photo 10: Wi-Fi (5 GHz) Module Back side

Prüfbericht - Nr.:
Test Report No.:

**19660379 001/
19660380 001**

Seite 6 von 9
Page 6 of 9

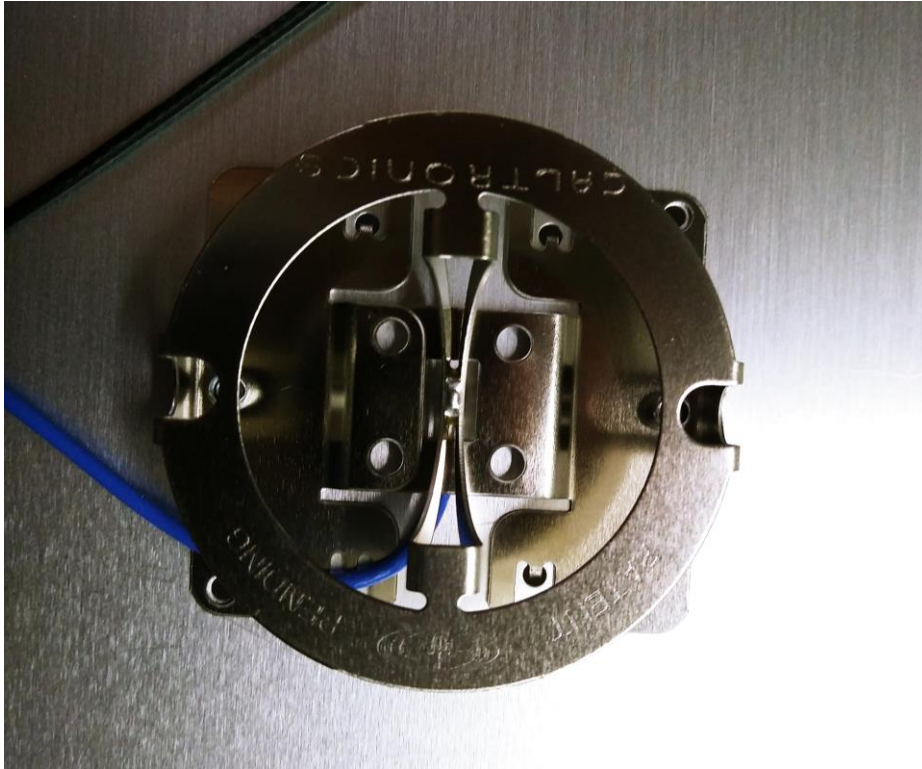


Photo 11: Wi-Fi (2.4 GHz) Transmitting antenna

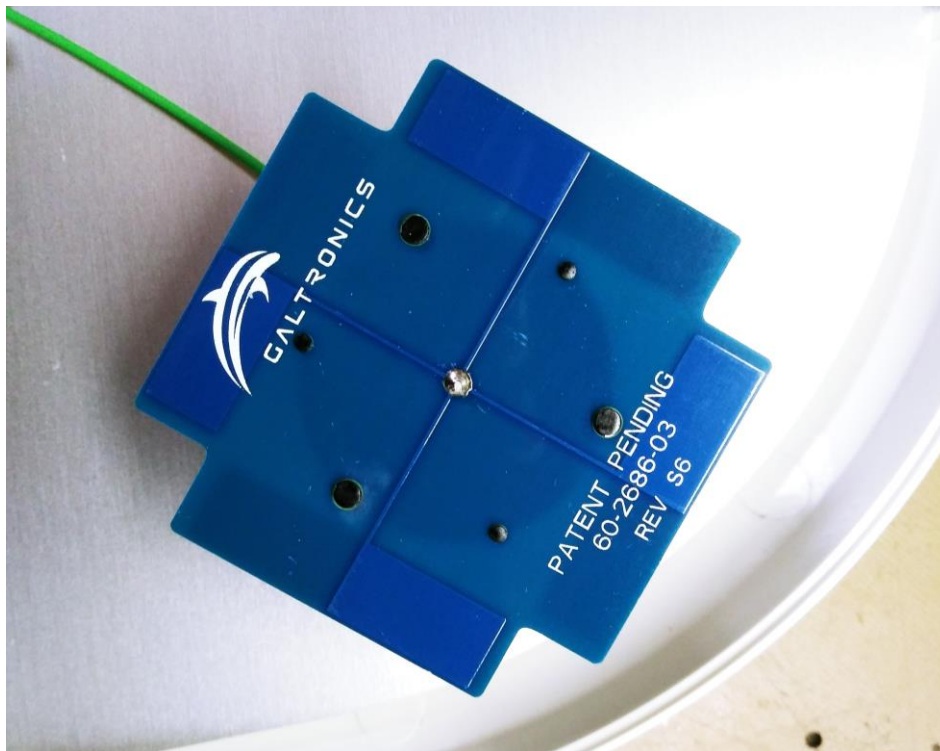


Photo 12: Wi-Fi (2.4 GHz) Receiving antenna

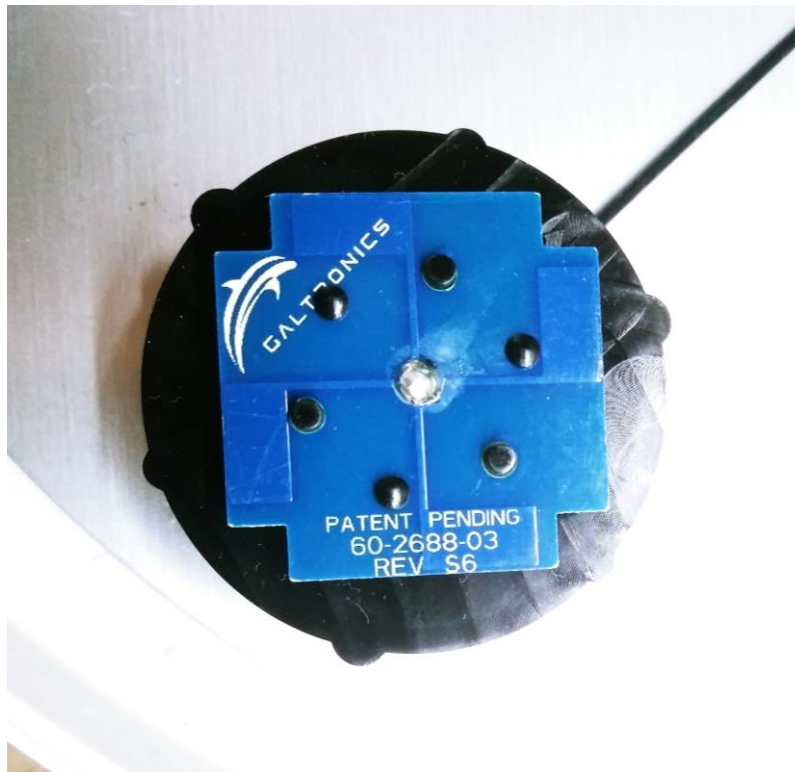


Photo 13: Wi-Fi (5 GHz) Transmitting antenna

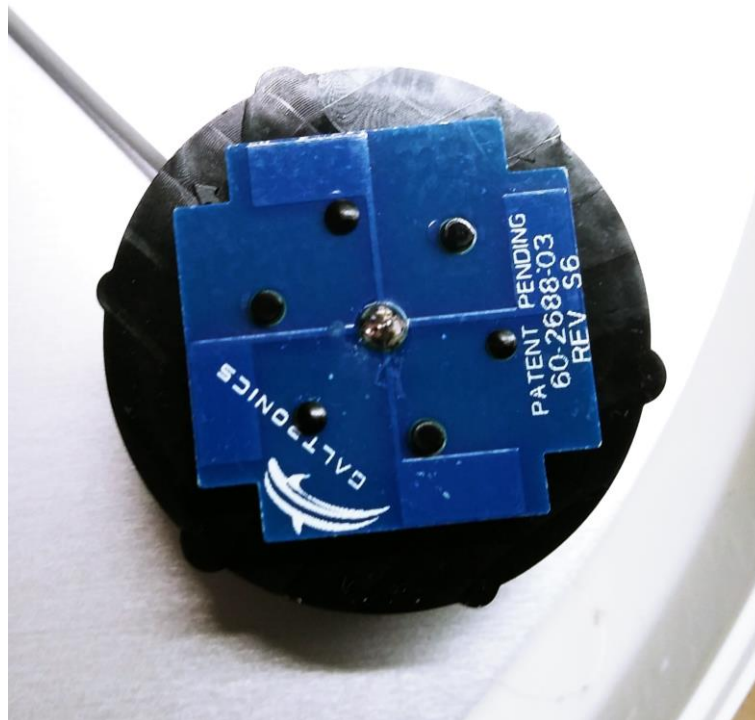


Photo 14: Wi-Fi (5 GHz) Receiving antenna



Photo 15: Wi-Fi (2.4 & 5 GHz) Transmitting antennas

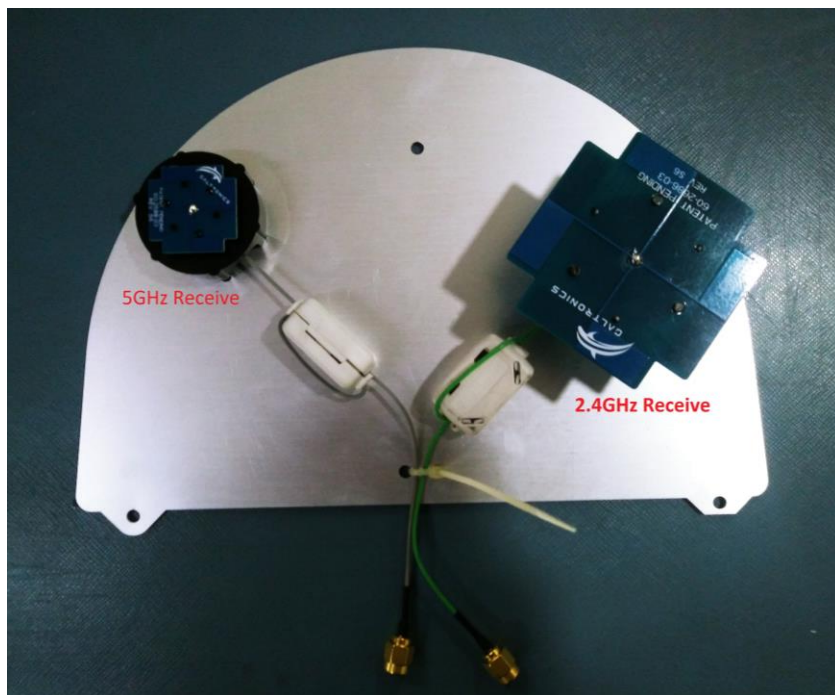


Photo 16: Wi-Fi (2.4 & 5 GHz) Receiving antennas

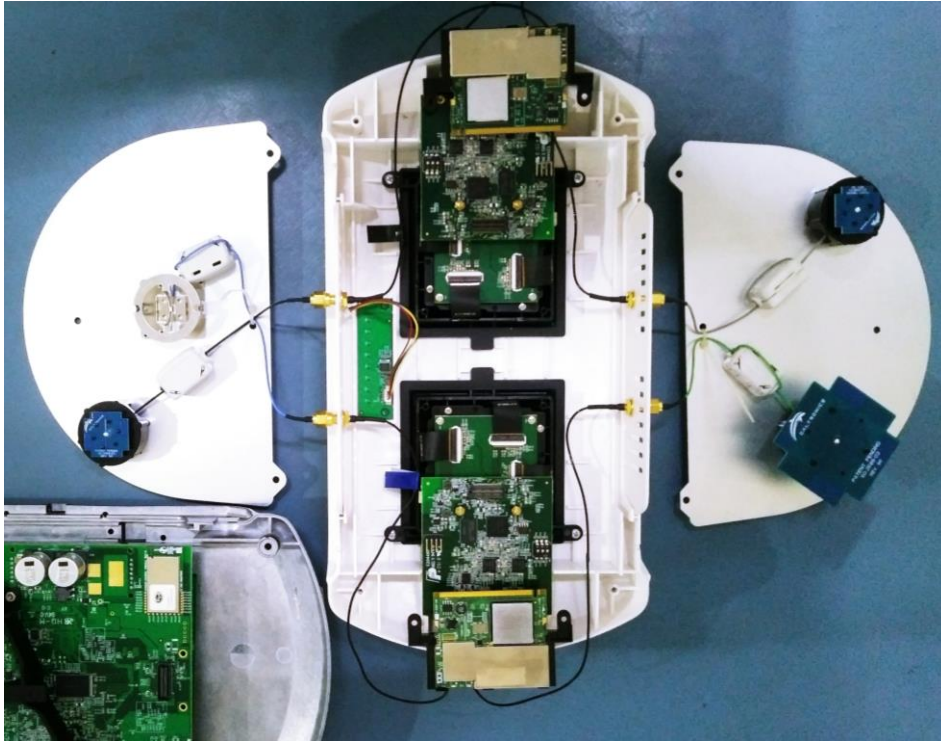


Photo 17: Wi-Fi (2.4 & 5 GHz) antenna connections

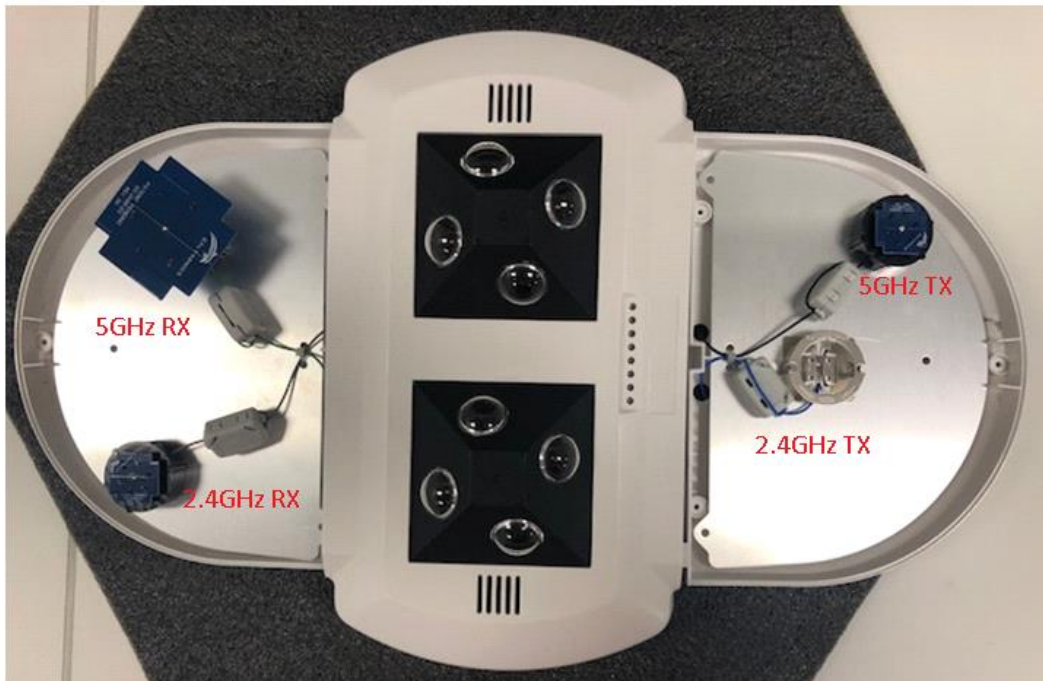


Photo 18: Wi-Fi Tx and Rx antennas