

MAGIC SING

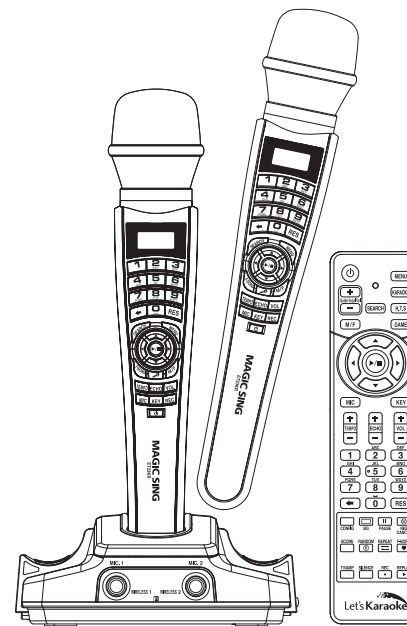
DYNAMIC SOUND & VISUAL EXPERIENCE

MAGIC SING USER'S MANUAL



ALL-IN-ONE KARAOKE
ET23KR
VER.100

Thank you for your purchase
Please read this carefully before using your MAGIC SING



Thank you for purchasing Enter Tech's MagicSing.
With this wireless karaoke system, you can enjoy singing.
Sing together and have fun with your family and friends.
Show off your talent anytime, anywhere!

User's Manual | ET23KR
VER.100

CONTENTS

Chapter 01. Introduction

Specifications	01-01
Basic Items	01-02
Optional Items	01-03

Chapter 02. How to Set up Your MAGICSing

How to Connect to a TV	02-01
How to Connect to a TV & Stereo (Sound System)	02-01
How to Change the Background Video using Other Video Sources	02-02
How to Convert [PAL] or [NTSC] mode of TV	02-02

Chapter 03. Product Guide

ET23KR Main Station	03-01
ET23KR Wireless Karaoke Key Buttons	03-02
ET23KR Remote Control	03-07

Chapter 04. Functions and Settings

KARAOKE

- Song Search	04-01
- Recording	04-03
- MY-MIC	04-05
- Theme	04-06
- Jump	04-06
- Vocal Assist (Multiplex)	04-07
- Musical Notation	04-07

HOW TO SING	04-08
-------------------	-------

GAME	04-09
------------	-------

Configuration Menu	04-10
--------------------------	-------

Software Installation	04-12
-----------------------------	-------

Chapter 05. Optional Items

Recording Pack	05-01
Additional Song Pack	05-02

Chapter 06. Additional Information

Precaution	06-01
Troubleshooting	06-02
FCC Information to User	06-03

Chapter.01 - Introduction

SPECIFICATIONS

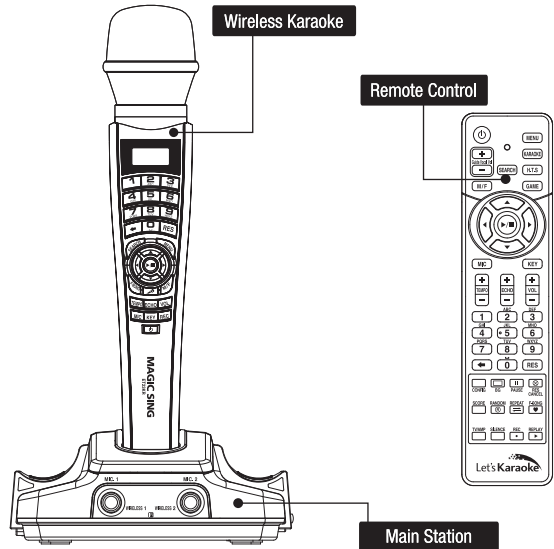
ET23KR MAIN STATION

• Model No.	ET23KR
• RF Frequency	2404 ~ 2474MHz
• Dimension / Weight	142(W) x 192.5(H) x 59(D)mm / 350g
• Power Consumption	During the Stand-By : 17mA / 153mW During the Playing
• Audio Output	Stereo Line Out(Full scale Output) - TV Mode : 2Vrms - AMP Mode : 3.5Vrms
• Video Output	Format : NTSC or PAL 1Vp-p @ 75 Ohm Load
• External Video Input	Composite1Vp-p @ 75 Ohm Load
• Resolution	NTSC : 720 x 480(interlace) / PAL : 720 x 576(interlace)
• USB(Slave only)	USB2.0(HI Speed), USB1.1Support
• Operating Temperature	0°C ~ 60°C
• Power Supply	AC Adaptor(DC 9V/1A)

WIRELESS KARAOKE

• Model No.	EX23DKR
• RF Frequency	2404 ~ 2474MHz
• Battery	1.5V (AA) x 2 EA
• Dimensions	51(W) x 51(D) x 269(H) mm
• Weight	240g (without the batteries)
• Wattage	70mA / 210mW
• Operating Temperature	0°C ~ 60°C
• Effective Distance	Up to 10m unobstructed distance

BASIC ITEMS



Karaoke Handbook
(Song list &
User's Manual)



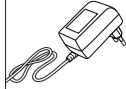
AV Cable
(Phone to RCA)



Video Cable



AC Adaptor
(DC 9V)



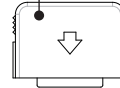
BASIC ITEMS

ET23KR Main Station	Karaoke Handbook (Songlist & User's Manual)
Wireless Karaoke x 2 ea / Battery AA x 4 ea	Remote Control / Battery AAA x 2 ea
USB Installation CD	AV Cable (Phone to RCA)
Video Cable	AC Adaptor (9V 1A)

OPTIONAL ITEMS

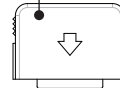
Additional Song Pack

You can add Additional Song Packs.
(Refer to Chapter 05-02)



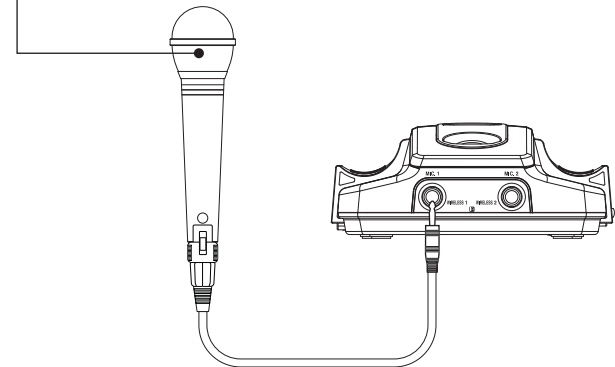
Recording Pack

You can record your own singing.
(Refer to Chapter 04-03, 05-01)



Wired Mic.

You can connect a wired mic to the main station so that you can duet with someone who sings with the wireless mic.
Refer to the picture below on how to connect it.

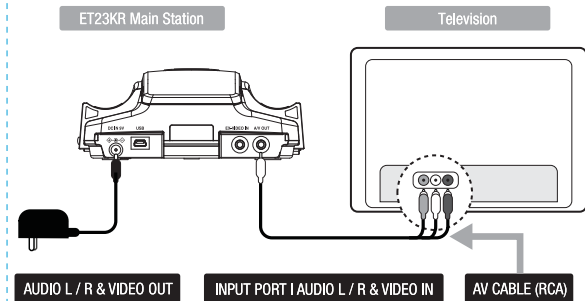


OPTIONAL ITEMS

Wired Mic.	Recording Pack
Additional Song Pack	

How to Set up Your MAGICSING - Chapter.02

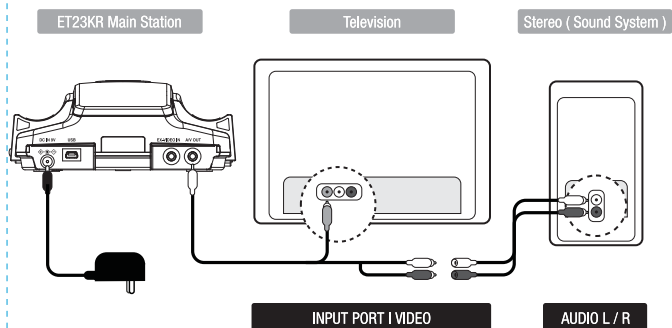
HOW TO CONNECT TO A TV



1. Connect the Audio / Video cable to the RCA jack terminal on your TV, as shown above. If there are only two RCA jack terminals on your TV (mono TV), connect the yellow jack (male) to the yellow RCA jack terminal and connect the white jack (male) to the other RCA jack terminal of your TV.

※ Please turn off the function "Automatic Volume Levelling" (AVL / AVC) on your television set.

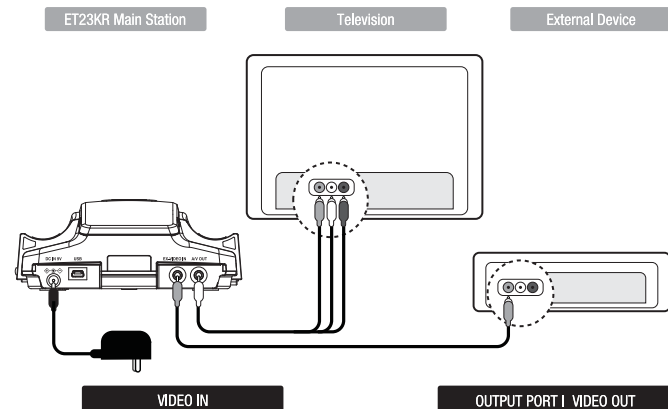
HOW TO CONNECT TO A TV & STEREO (SOUND SYSTEM)



1. Connect the yellow jack to the yellow RCA terminal on your TV. Connect the red and white jack to jack terminals on your stereo (sound system). You might need an extension cable if your stereo (sound system) is placed far away from your TV.

Chapter.02 - How to Set up Your MAGICSING

HOW TO CHANGE THE BACKGROUND VIDEO USING OTHER VIDEO SOURCES

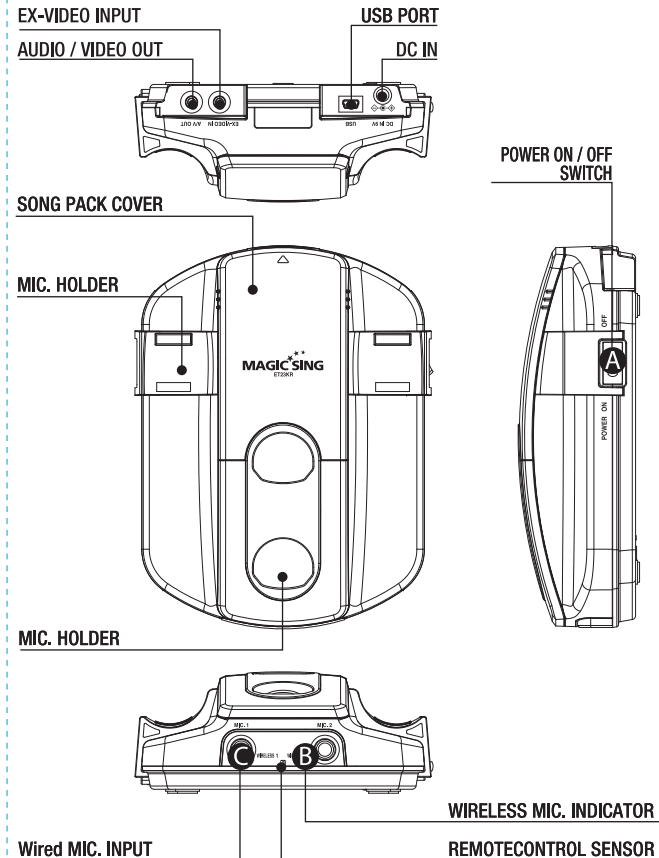


1. Connect the video cable to the VIDEO OUT jack terminal on other optional video sources (VCD, DVD, VIDEO).
2. Connect the other side of the video cable to the VIDEO IN jack terminal of MAGICSING.
3. Press [MENU + 0] on the mic or on the remote control to use other video sources as background by setting "EXT.VIDEO INPUT" on the "configuration menu".

HOW TO CONVERT [PAL] OR [NTSC] MODE OF TV

1. To convert to PAL mode, turn off the mic first.
Press and hold button [8] on the mic, and then press the [POWER] button using another finger until the word "PAL" appears on the TV screen. (Do not release button [8] and the [POWER] button until the word "PAL" appears on the TV screen.)
2. To convert to NTSC mode, turn off the mic first.
Press and hold button [9] on the mic, and then press the [POWER] button using another finger until the word "NTSC" appears on the TV screen. (Do not release button [9] and the [POWER] button until the word "NTSC" appears on the TV screen.)

ET23KR MAIN STATION



A POWER ON / OFF SWITCH

- Turns on or off the main station.

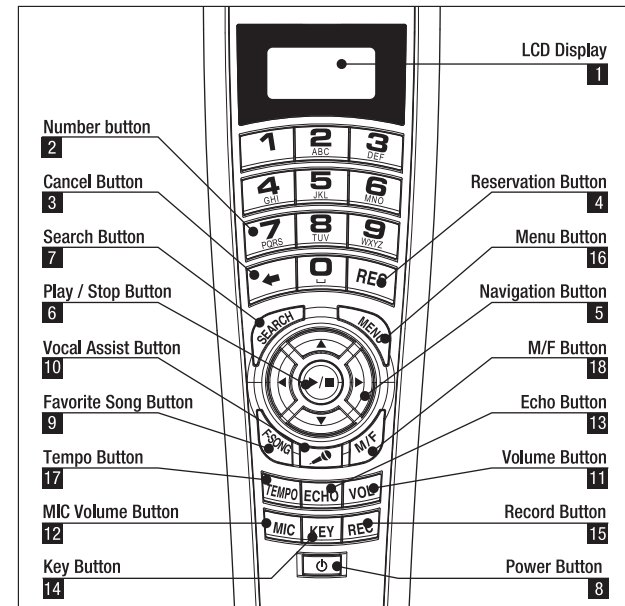
B WIRELESS MIC INDICATORS

- A green & yellow light indicates that the wireless mic is connected to the main station.(No.1 mic green / No.2 mic yellow)

B WIRED MIC CONNECTOR

- You can connect a wired mic to the main station so that you can duet with someone who sings with the wireless mic. Refer to the picture below on how to connect it.

ET23KR WIRELESS KARAOKE KEY BUTTONS



1. LCD DISPLAY

2. NUMBER BUTTON

3. CANCEL BUTTON



- Press this button to erase one by one what you input or to cancel some function you chose.

4. RESERVATION BUTTON



- Please select a song and press [RES] to reserve the song (The song number will be displayed on the screen under the "Reserved" menu.)

- Press [MENU] twice to exit the reservation list and go back to the on-screen list by pressing [▼] [▲].

- In case you want to delete a reserved song, select that song in the "reserved" list and press [RES] again.

- You can reserve up to 100 songs, but only 4 songs with their respective numbers will appear on a blue bar on the upper portion of the screen.

- This button also used to exit from some function you chose.

5. NAVIGATION BUTTONS



- Press these buttons to choose different modes, different songs and so on by scrolling up/down and left/right.

6. PLAY / STOP BUTTON



- Press [▶/■] once to play the selected song.
- Press [▶/■] again to stop playing the song.

7. SEARCH BUTTON



- Pressing [SEARCH] will prompt you to different modes of choosing a song.
- You can also search a song from the on-screen list by pressing [▼] [▲] or inputting characters. (Refer to Chapter.04-01)

8. POWER BUTTON



- Turns on or off the mic.
Press [POWER] slightly to turn it on.
Press [POWER] for 3 seconds to turn it off.
- When there is no input signal within 10 minutes, the power will be turned off automatically.
(You can change this function in the Configuration.)

9. F-SONG BUTTON



- This function enables you to save your own customized settings over the song you chose.
- While singing a song, adjust settings such as the volume, melody, echo, etc., press [F-SONG] on the mic to save the settings.
- To see the stored [MY-MIC] song list, press [F-SONG] again.
- Press [▼] [▲] to select the song you wish to sing again with the adjusted settings. Press [▶/■] to play the song and press [RES] to delete it from the list.
- The lists containing the customized settings will be retained even after turning off the ET23KR.

10. VOCAL ASSIST BUTTON



- Press this button to see the list of vocal assist. (Refer to Chapter. 04-07)
- While singing a song, you can activate or deactivate vocal assist function by pressing this button repeatedly.

11. VOLUME BUTTON



- When you press [VOL], two different sub volume control menus appear on the TV screen ① Music (press once)
② Vocal Assist : Multiplex (press two times).

12. MIC BUTTON



- Press [MIC] to adjust the volume of the main mic then press [▼] [▲] to decrease / increase the volume.
- This setting will remain until the product is reset or the values are changed by users.

13. ECHO BUTTON



- Press this button and then use the navigation buttons to adjust the ECHO levels of a song.

14. KEY BUTTON



- Press [KEY] and then press [▼] [▲] to decrease / increase the pitch level while singing a song.
The TV screen will display the range of keys (-7 ~ 8) with the default value [0] on the key bar at the upper part of the screen.
- At the end of the song or when you press [▶/■] to stop the song, this setting will return to the initial default value [0].

15. RECORD BUTTON



- Choose / select a song first before recording.
- Press [MENU + REC] to start recording.
- Press [▶/■] to stop recording.
- Press [REC] to start the playback of the song.

16. MENU BUTTON



- You can see the function menu bar on the upper screen by pressing [MENU]. First, find a function you want to use by pressing [▼] [▲] and then press [▶/■] to prompt you to the sub-menu.
Press [▼] [▲] then [▶/■] to choose an option.
- [MENU] is used in conjunction with other buttons to access secondary functions.

17. TEMPO BUTTON



- Press [TEMPO] and then press [down]/[up] to decrease / increase the music tempo while singing a song.
- At the end of the song or when you press [play/stop] to stop the song, this setting will return to the initial default value.
- This function is not available for the multiplex songs.

18. M/F BUTTON



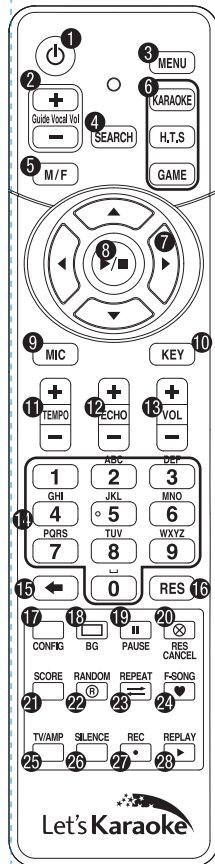
- When you press [M/F], you can change the key from Male to Female vice versa.

* Note - [M/F] function is only valid on a current song. the next song has original key.

* MENU Function

[MENU]+[1]	VOLUME (3 Different Sub Volume Control Menus Appear) ① Music volume control 0~15 ② Melody volume control 0~15 ③ Vocal Assist volume control 0~15
[MENU]+[2]	TEMPO (Adjusts the Tempo of a Song) The range of the tempo adjustment is between -7 ~ 8, and you can select a tempo at which you want to play the song by selecting a value from this scope.
[MENU]+[3]	KEY (Adjusts the Level of the Pitch) The range of the pitch adjustment is between -7 ~ 8, and you can select the pitch level.
[MENU]+[4]	SEARCH (Song Search Function) Look for your favorite song.
[MENU]+[5]	EFFECT (Musical Effects) : 4 Different Sub Menus Appear ① Mic Echo volume control 0~15 ② Instrument : You can change the melody instrument by using [▼] [▲] [◀] [▶] to one of the 8 instrumental sounds while singing a song. ③ Voice change : Mic voice alteration function that can change your voice either to female voice or to male voice. ④ Vocal assist ON / OFF
[MENU]+[6]	PLAYING (Technical Effects) : 5 Different Sub Menus Appear ① Jump : Skips the prelude or interlude ② Continuous Playback : If you wish to continue playing songs in sequential order, select a starting song and press MENU → 6 → 2 (for example, if you select song number 241, play the song, and then press MENU → 6 → 2). ③ Random Play : MagicSing randomly chooses a song for you. ④ Pause : A song pauses. Press [▶/■] to continue playing. ⑤ Selected Section Repeat : Repeats a certain section in a song. ※ Press [MENU + 6 + 5] to set the starting point and [MENU + 6 + 5] again to set the ending point. Pressing [MENU + 6 + 5] 3rd time turns off this function. ※ This "selected repeat function" is not available for the prelude and interlude sections of a song
[MENU]+[7]	REC & PLAY ① Record ② Playback (Playing the recorded song) ③ Chain Recording ④ Chain Reply
[MENU]+[8]	SPECIAL EFFECT : 5 Different Sub Menus Appear ① Musical Notation (Key Note Guide) ② My-Mic ③ Theme : Background Themes (9 background themes to choose from) and Scoreboard (Records your scores at the end of each song) ④ Silence : Silent mode (you can choose from "level 1", "level 2", and "off") ⑤ Lyrics ON / OFF
[MENU]+[0]	CONFIG. (Configuration)

ET23KR REMOTE CONTROL



- ❶ **POWER** : POWER ON/OFF.
- ❷ **VOCAL ASSIST VOLUME** : Adjusts the song key.
- ❸ **MENU** : Functions.
- ❹ **SEARCH** : Song search.
- ❺ **M/F** : Changes the key of current song from Male key to Female key.
- ❻ **SHORTCUT** : Guides directly to some modes.
- ❼ **NAVIGATION** : Mult-function guide buttons.
- ❽ **PLAY / STOP** : Plays & Stops a song or function.
- ❾ **MIC** : Adjusts the Microphone level.
- ❿ **KEY** : Adjusts the song key.
- ⓫ **TEMPO** : Adjusts the song tempo.
- ⓬ **ECHO** : Adjusts the echo level.
- ⓭ **VOL** : Adjusts the volume.
- ⓮ **0~9** : Arabic numbers.
- ⓯ **←** : Cancel.
- ⓰ **RES** : Reserves and cancels a reservation.
- ⓱ **CONFIG** : Configuration.
- ⓲ **BG** : Changes backgrounds.
- ⓳ **||** : Pause.
- ⓴ **RES CANCEL** : Cancel Reservation.
- ⓵ **SCORE** : Changes the level of difficulty.
- ⓶ **RANDOM** : Random song select.
- ⓷ **REPEAT** : Section repeat.
- ⓸ **F-SONG** : Favorite Songs.
- ⓹ **TV/AMP** : TV or AMP mode change.
- ⓺ **SILENCE** : Silence mode.
- ⓻ **REC** : Recording.
- ⓼ **REPLAY** : Playback.

KARAOKE

1 SONG SEARCH

I. Entering the Song Search Mode

- Press [SEARCH] or [MENU+4] on the remote control to enter the Song Search Screen.



II. Buttons for the song search mode on the remote control

- [SEARCH] : Press [SEARCH] repeatedly to select one of these two modes below.

- 1) Searching by Title : You can search for a song by typing some letters.
(Refer to "IV. How to Search a Song" on the next page, chapter 04-02)
- 2) Searching by Singer : You can search for a song by typing some letters the singer's name.
(Refer to "IV. How to Search a Song" on the next page, chapter 04-02)
- 3) Exit Mode : Neither the "title" icon nor the "singer" icon will be highlighted on the screen.

- [←] : Press this button to erase characters.



III. Exiting the "Song Search" mode

- After entering the "song search" mode, search a song using [▼] [▲] [◀] [▶] and play the song by pressing [▶/■] or reserve the song by pressing [RES].
- After entering the "song search" mode, set it to the "exit mode" by pressing [SEARCH] and end the search by pressing any number button.
(If there are reserved songs, the list containing those reserved songs will be displayed on the screen.)

IV. How to Search a Song

After entering the song search screen, press [MENU] to set input methods below.

① Input letters

[1] [2] A → B → C [3] D → E → F [4] G → H → I [5] J → K → L
[6] M → N → O [7] P → Q → R → S [8] T → U → V [9] W → X → Y → Z [0] SPACE

(The search function disregards spaces. E.g. : If you want to search a song whose title is "A DONDE VOY," you only have to enter "AD" without space between characters to execute the search.)

- Press the [0] ~ [9] buttons to input characters.

- Examples

To enter "TOU" : Press [8] once → [6] three times → [8] two times

To enter "ABC" : Press [2] once → [2] two times → [2] three times



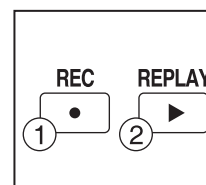
2 RECORDING

Use this function to record your singing(VOICE with the MUSIC) and to playback your recorded singing performance.

1. RECORDING TO THE MEMORY IN THE MAIN STATION

In case of no Recording Pack on the main station, follow the procedure below.

How to Use:



- 1) Select a song.
- 2) Press [●] the remote control to start recording (①).
- 3) To stop : Press [▶/■].
- 4) To do playback : Press [▶] on the remote control (②).
- 5) To stop the playback : Press [▶/■].

- ※ A song recorded less than two seconds will not be recorded.
- ※ You can record a song of up to five minutes long.
[approximately for 1(one) song]

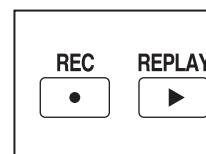
2. RECORDING PACK

A recording pack records the user's song.

The recording pack may look exactly the same as an additional song pack, but both store different data types.

Unlike other song packs, data in the recording pack are changeable.

How to Use:



- 1) Insert a Recording Pack before tuning on the main station.
- 2) Select a song.
- 3) Press [●] under the "RECORD" section on the remote control to start recording
- 4) To stop, press [▶/■].

- 5) To see the list of the recorded songs, press [▶] the remote control.
- 6) To play back the song, choose a recorded song first by pressing [▼] [▲] [◀] [▶] on the remote control. After selecting the song the song, press [▶/■] on the remote control.
- 7) To stop the playback, press [▶/■].
- 8) To delete a recorded song, choose the song and press [RES].

9) Chain Recording

Records your reserved songs continuously.

Select songs you want to record and reserve them.

Choose the "Chain Recording"(MENU + 7 + 3) to start singing & recording of all the reserved songs simultaneously.

10) Chain Replay

Replays the recorded songs.

Select a song you want to replay first from the list.

Choose the "Chain Replay"(MENU + 7 + 4) to start replaying all the reserved songs.

When you choose a particular song in the "Chain Replay" function, the replay continues until the song right before the chosen song.

- ※ While a Recording Pack is being used, your singing cannot be recorded on the main station memory.
- ※ When an Additional Song Pack is used on the main station, songs recorded from the Additional Song Pack can be played or deleted too.
- ※ You cannot record your singing performance in the middle of the song. Therefore, even if you press [●] on the remote control while singing a song, the song stops, restarts, and then the recording takes place.
- ※ Settings such as tempo or key should be set in advance as these cannot be changed while the song is being recorded. Also, during the recording, certain functions such as continuous play or pause are not available.
- ※ Recording time - Recording Pack : About 180 minutes. (NAND 1Gb)

3. HOW TO SET UP A RECORDING PACK & AN ADDITIONAL SONG PACK

CAUTION: TURN THE POWER OFF FIRST.

It is very important to power off first before removing or inserting a recording pack or an additional song pack

1. Locate the back cover of main station. Open the back cover.
2. The arrow on the top of a recording pack or other packs should be pointing towards the main station head. Insert any pack into one of the 6 slots in the back of the main station and carefully press it.
A click sound indicates that it is properly inserted.
3. Close the back cover. Turn the power on.

3 MY-MIC

This function enables you to save your own customized settings over the song you chose such as the volume of music, melody, microphone, echo effect, and vocal assist as well as the tempo, key setting.

You can recall these settings when you select and sing the song again.

1. SAVING ADJUSTED SETTINGS

- While singing a song, adjust settings such as the volume of music, melody and so the way you want to customize the song, and then press [F-SONG] on the remote control while the song is still playing.
- The song with the adjusted settings will be saved in the [MY-MIC] song list.
(If the same song is already in the list, the song will be updated with new settings.)
- The lists containing the customized settings will be retained even after turning off the ET23KR.

2. SELECTING & PLAYING A SONG

- Press [F-SONG] to see the [MY-MIC] song list while not playing any song.
- Select the song from the list and press [▶/■] to play the song with the stored settings.

3. DELETING A SONG

- Press [F-SONG] while selecting a song to see the stored list of MY-MIC songs.
- Press [▼] [▲] [◀] [▶] to select the song you want to delete, and press [RES] to delete it.

5 THEME (BACKGROUND THEME AND SCOREBOARD)

1. THIS FUNCTION CAN ONLY BE SET BEFORE CHOOSING A SONG

- Press [MENU + 8 + 3] or [BG] on the remote control for this function.

2. TO FINISH THIS FUNCTION, PRESS [RES]

3. BACKGROUND THEME

- You can select any theme from a set of nine different themes as screen background.
- Press number buttons [1] ~ [9] or [▼] [▲] [◀] [▶] to set the theme you want.

[1] Love	[2] Party	[3] Summer
[4] Nature	[5] Carnival	[6] Sports
[7] City	[8] Country	[9] Tour

Once a background theme is set, only the pictures related to the selected theme will be shown on the screen.

4. SCOREBOARD

- The scoreboard shows the corresponding song numbers and the scores of the songs that you have played.
(Only 7 songs will be displayed on the screen.)

6 JUMP (PRELUDE / INTERLUDE SKIP)

- You can use the [JUMP] function only during the prelude or the interlude of a song.
- Press [JUMP] on the remote control to skip the prelude or the interlude part of a song.

7 VOCAL ASSIST (MULTIPLEX)

The song comes up with a professional singer's voice with the music. This feature is available only songs indicated "Vocal Assist" on the TV screen and song book.

1. VOCAL ASSIST [ON]

- If you wish to activate this function, press the [🎤] on remote control or [MENU + 5 + 4] to turn it ON, while singing a multiplex song.
- The voice will fade out when you sing a song and if you stop singing, the voice will fade in.

2. VOCAL ASSIST [OFF]

- If you wish to deactivate this function, press [🎤] or [MENU + 5 + 4] to turn it OFF, while singing a multiplex song, which enables you to sing along with the singer's voice.
- If you do not want to hear any voice of the vocal assist at all, press [–] button of [Vocal Assist] on the remote control, and then the volume bar will appear on the upper part of the TV screen. Then press [–] until it reaches "0".

3. VOLUME ADJUSTMENT

- Press Vocal Assist [–], [+] on the remote control to adjust the volume of the vocal assist until it reaches a desired level.

8 MUSICAL NOTATION (KEY NOTE GUIDE)

- Press [MENU + 8 + 1] on the mic to see the song list containing only the songs with this note guide function.
(This function is available only for the songs in the list.)
- Choose a song from the list and play the song.
After that, press [MENU + 8 + 1] on the mic to choose one of the two settings which are "Normal", and "OFF".
 - Normal** : Displays the musical notes on the upper part of the screen with the original key of the song.
 - OFF** : Does not display any musical notes.
 - ※ A musical notation appears on the upper part of the screen as soon as a song starts.
 - ※ This gives the user an idea of the key/pitch of the song he/she is about to sing.

HOW TO SING

1 SINGING PRACTICE

This function is for users to keep practicing a particular part of a song they want by moving the part of the song forward and backward. You also can find any particular parts of a song with its play time as well.



1. PURPOSE

- When you want to repeat some part of the song over and over to practice.
- When you want to move to some part of song without waiting.
- When you want to memorize some part of song.
- When you want to go backward to repeat singing.

2. HOW TO USE

- 1) Press [||] while singing.
- 2) Press [▼] [▲] [◀] [▶] to show lyrics.
- 3) Press [▼] [▲] to go forward or backward.
- 4) Press [▶/■] to play.
- 5) Press [||] again if you want to repeat the part and follow the same procedure from 2) above.

3. EXIT

To change categories or exit from "Singing Practice", press [←].

2 TUNING METER

This is a function in which you can check if your notes(scores) from your singing are correct with the piano keys.

- Press [9] to change female voice or to male voice.
- Press [0] to change the musical instruments.
- To exit, press [←] or [RES].

GAME

When you select a game, its instructions will be displayed on the TV screen before the game starts.

- To restart the game, press [MENU].
- To exit, press [←] or [RES].

CONFIGURATION MENU

1. Press [MENU]+[0] to enter the configuration menu.
 - [1] Select a function using the [▼] [▲] buttons.
 - [2] Change the mode pressing the [◀] [▶] buttons.
 - [3] To exit configuration, press [MENU].
2. Press [MENU] to exit the configuration.

3. CONFIGURATION OPTIONS



- [1] **SELECTING BACKGROUNDS** : Users can select one of the four types of background images as below.
- 1) **MAGICSING JPEG** :
Showing built in JPEG image files as a background.
 - 2) **EXT-VIDEO INPUT** :
Showing external videos as a background.
- [2] **OUTPUT MODE** : Sets the audio output mode to TV or AMP.
- [3] **LYRICS BAR** : ON (A blue bar behind lyrics appears) / OFF.
(The blue bar disappears)
- [4] **MIC V.C.** : Changes your voice either to a female's or male's.
(The "OFF" mode means to go back to your own voice)
- [5] **AUTO POWER OFF** : ON (If there is no action for 10 minutes, automatically shuts down.)
OFF (Power stays on until user shuts down.)
- [6] **SONG DISPLAY** : Sets song sorting type displayed on screen.
The list of song can be displayed by the title or song number.

[7] SCORE CHECK

- 1) **BEGINNER** :
This level only evaluates your tempo when you sing a song.
- 2) **AMATEURE** :
This level evaluates both tempo and pitch when you sing a song.
Singing in suitable chord is accepted.
- 3) **PROFESSIONAL** :
This level evaluates both tempo and pitch based on the original Song's key and tempo.
- 4) **OFF** :
Turns off(hides) score check function when you sing a song.

[8] **REAL TIME SCORE** : Shows your score throughout the whole song you are currently singing if you turn this function on.

[9] **SONG COUNTDOWN** : Sets the countdown (4, 3, 2, 1) display ON/OFF.

[10] LYRICS LINE :

Selects the number of lyric lines shown on the TV screen.
(2 lines, 3 lines, Auto)

[11] **LYRICS POSITION** : Sets the position of lyrics on the screen.
(Center, Left-Right, All Mixed)

[12] **LANGUAGE** : Selects the language for the system.

Notice

Please note that certain TV models and 5.1-7.1 surround home theatre systems might cause **INPUT LAG** (sound delay) when you use the **ENTER TECH MAGICSING** Karaoke system.

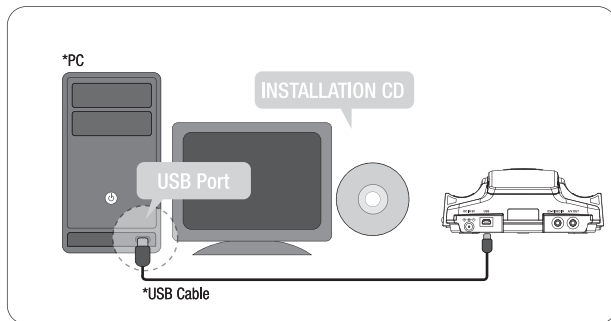
In this case, we recommend using other audio devices such as a 2.1 amplified speaker system or a component system for the sound output. Just connect the audio cables (RED and WHITE RCA cable) to the female audio input of the external device. (RED and WHITE)

If you are using a surround Home Theater system, set the output to 2-channel stereo. Please refer also to the input/output connection instructions in the user's manual of the device.

※ **INPUT LAG** : Refers to latency or lag measured by the difference between the input signal and actual display output.
This lag occurs in most LCD, LED, PDP, and HD Digital TVs.

SOFTWARE INSTALLATION

Installing the USB driver, ET manager and ET encoder in your PC :

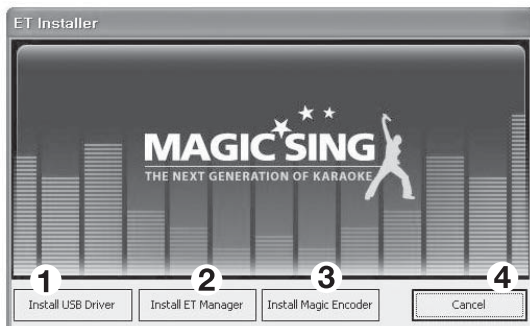


1. Enables you to use your own images or pictures in your computer as MagicSing background pictures on TV.
2. Enables you to convert the recorded songs from the Recording Pack to your PC as MP2 files.

Note : In the absence of the Installation CD, you can install the ET manager and USB driver softwares in your PC by downloading them from our website. (www.enter-tech.com)

1 HOW TO INSTALL USB DRIVER + ET MANAGER + ET ENCODER

Insert the Installation CD into your PC, and then you will see the pop-up screen as shown below.

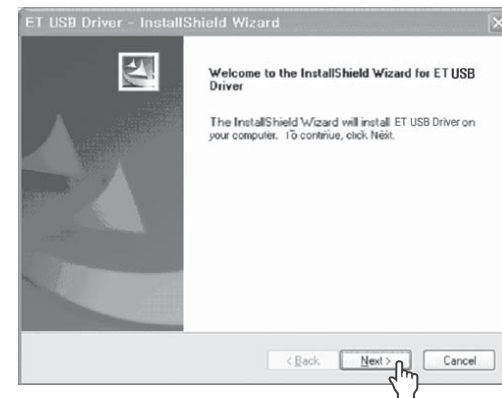


Note : Please do not connect MagicSing to a PC by USB cable before installing "Install USB Driver".

1) USB Driver Installation

This installation should be completed in advance to execute ET Manager. Click "Install USB Driver" (1) and follow the below instruction of "ET USB Driver - InstallShield Wizard" as shown below.

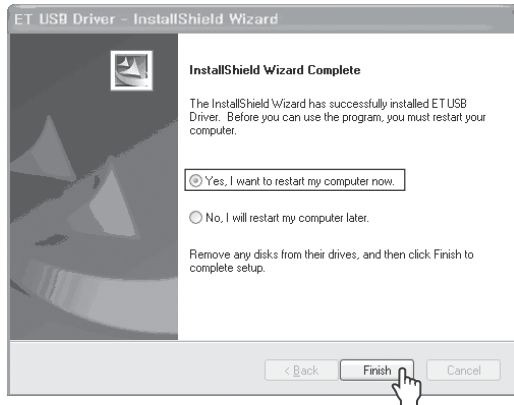
- a) Click "Next" to start the installation.



- b) Click "Continue anyway" to proceed.



c) Select "Yes" and click "Finish" to restart the computer.

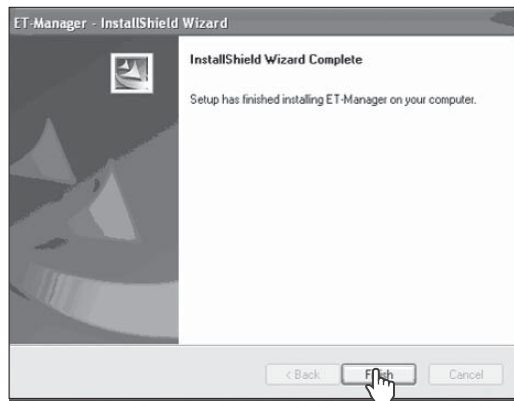


2) ET Manager Installation

After restarting the computer, take the "Installation CD" out and put it back into your PC again.

Click "Install ET Manager" (②) on the first pop-up screen and follow the instructions of "ET Manager InstallShield Wizard".

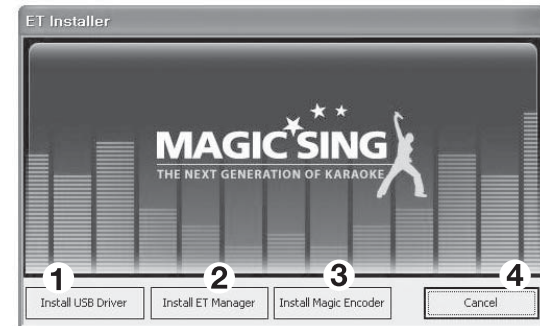
When you see the pop-up screen below, click "Finish" to complete the ET Manager installation.



3) EXIT

After completing the two previous installations, you will see the screen below again.

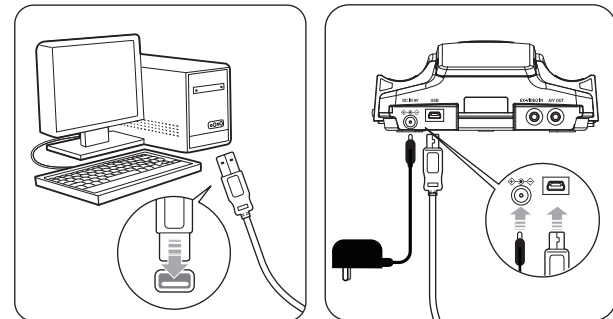
In order to exit, click "Cancel" (④).



And follow the below steps to execute the ET Manager properly.

2 HOW TO CONNECT MAGICSING TO A PC WITH A USB CABLE

1. Turn on the power of main station.
2. Plug the USB cable in the PC's USB port as shown in the picture below.
3. Plug the USB cable in the MagicSing's USB port as shown in the picture below.



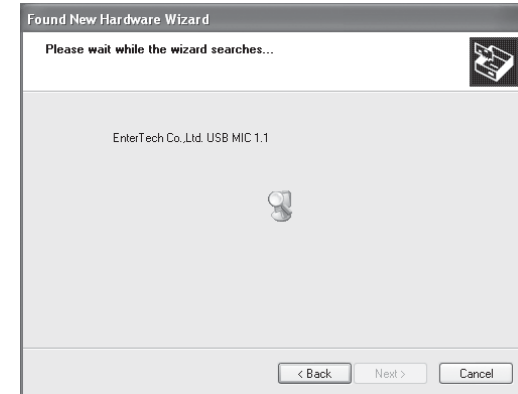
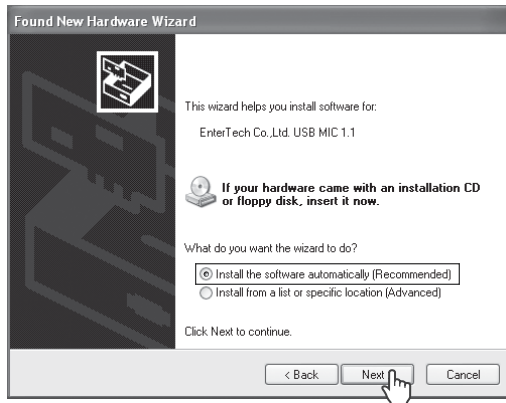
"USB CONNECTED" will appear on TV SCREEN.

4. When you connect MagicSing to a PC for the first time, the “Found New Hardware Wizard” window below will show up as it will try to search the USB driver in your PC system.
(In order to operate “ET manager”, the following steps should be completed.)

a) Click “Yes, this time only” and “Next” to continue.



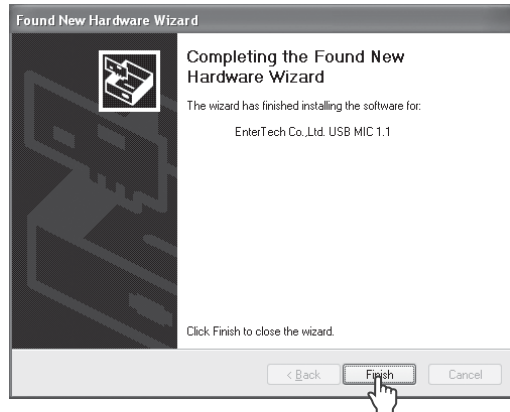
b) Click “Install the software automatically (Recommended)” and “Next” to continue.



c) Click “Continue anyway” to proceed.



d) Click "Finish" to close the wizard.



3 INSTALLING THE ET ENCODER IN YOUR PC.

1. HOW TO USE INSTALL ET ENCODER

a) Insert the installation CD into your PC, and then you will see the POP-UP screen as shown below. Click 'Install Magic Encoder'.



b) Follow direction.



c) Now Installation is finished. Program will be shown.



ET MANAGER

1 GENERAL DESCRIPTION

A. Recorded Song

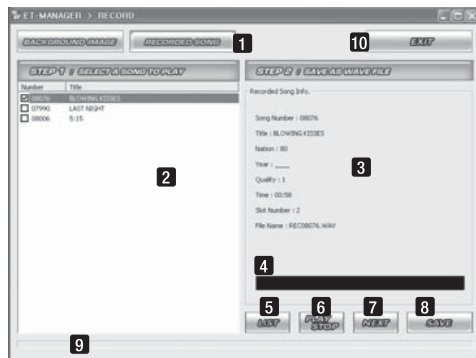
You can save your songs in the Recording Pack and you can convert and transmit the recorded songs into your PC as a "MP2" file (USB cable needed) to play those through PC or MP3 player.

Note : This function is available only when you use a Recording and Memory Card.

2 FUNCTION

A. Record

1) User Interface Layout.



- 1 **RECORDED SONG** : Click on the "RECORDED SONG" tab to work with Recorded Songs.
- 2 **SONG LIST** : When you click "LIST", it shows you the list of the song titles recorded in the recording pack. (if there's any)
- 3 **RECORDED SONG INFO** : Shows the song info. of a song recorded in the recording pack which is currently playing.
- 4 **SONG COUNTER BAR** : Time counter of the song currently playing.
- 5 **LIST** : Clicking on this tab shows you the song titles(if there's any) in the "Song list" window.
- 6 **PLAY / STOP** : Clicking on this "PLAY" tab plays the selected song. (Select a song by checking off the box beside the song title.) Clicking on this "STOP" tab stops the song currently playing. (The "PLAY" button will be transformed into the "STOP" button as soon as the song starts playing.)
- 7 **NEXT** : Clicking on this tab plays the next song on the list. (Check off the box first beside the song title(s) you want to play next.)

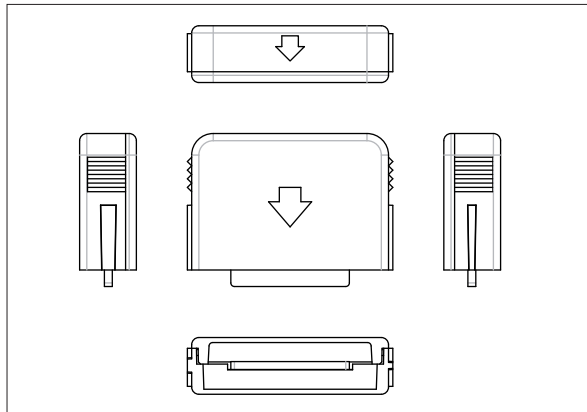
- 8 **SAVE** : Clicking on this tab saves the selected songs in your PC as a MP2 file.
- 9 **DOWNLOAD PROGRESS BAR** : Shows the length of the recorded song currently playing.
- 10 **EXIT** : Allows you to exit from the "RECORDED SONG" window.

2) How to use

- 1 Insert a recording pack into the main station and turn on the power.
- 2 If there are recorded songs in the recording pack, just go to step 3. If not, record your favorite songs first which you want to convert and save into your PC.
- 3 Connect the main station to a PC by USB cable.
- 4 Execute "ET MANAGER".
- 5 Click on the "RECORDED SONG" tab.
- 6 Click on the "LIST" tab to show you the song titles (if there's any) in the "Song List" window.
- 7 Select a song from the song list by checking off the box beside the song. Click on the "PLAY / STOP" tab to hear the selected song on your PC.
- 8 Click on the "NEXT" tab to play the next song.
- 9 (Check off the box first beside the song title(s) you want to play next.)
- 10 Click on the "PLAY / STOP" tab to stop the song currently playing.
- 11 Click on the "SAVE" tab to save the selected song into your PC as a MP2 file.

RECORDING PACK

You can record your own singing into the Recording Pack.



- **Turn off MagicSing** : MagicSing should be turned off first.
- Insert the Recording Pack into one of the slots in the back of the main station according to the direction of the arrow.
- Turn on the power of main station then select a song number and press [●] under the “record” section on the remote control.
- To stop the recording, press [●] again on the remote control or you can also press [▶/■].
- To play back the recorded songs, press [▶] under the “record” section on the remote control, and your recorded songs will be listed on the screen. Select a song using [▼/▲] then press [▶/■].
- To stop the playback, press [▶/■] again.
- To delete the recorded songs, press [RES] on the highlighted songs.

You cannot record your singing performance in the internal memory of main station while you are recording it in the recording pack.

You cannot record your singing performance in the middle of a song. If you press [●] in the middle of the song, the song stops, restarts, and then recording takes place.

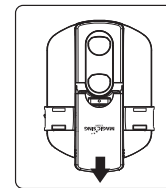
The Tempo, Jump and Key functions will not work when you are playing back the recorded songs.

ADDITIONAL SONG PACK

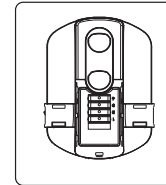
You can add more of your favorite songs to MagicSing.

How to Insert an Additional Song Pack

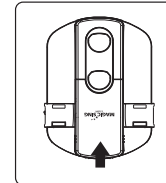
First, turn OFF the power. This is very important to turn off the main station before removing or inserting a song pack.



- Turn off the power of the main station
- As shown, open the back cover to the direction of the arrow.

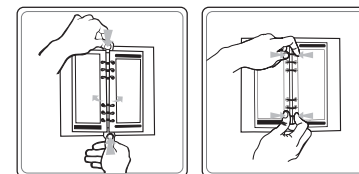


- Make sure the arrow on the song pack is pointing left when you insert the song pack. (4 additional song packs can be inserted.)



- After the song pack is inserted, close the back cover.
- Turn on the power of main station.

SONGLIST INSERTION



- Press down both the top and the bottom metal tabs of the binder simultaneously to open the binder rings.
- Insert the new song list between the binder rings.
- Close the binder rings.

PRECAUTION



Use the adaptor that comes with MagicSing only. There are many adaptors that are plug-compatible with MagicSing, but have different electrical specifications. These adaptors would work only for a short period of time but would very soon damage MagicSing.

USE THE RECOMMENDED ACCESSORIES ONLY (DC 9V/1A)



Do not drop MagicSing. Any external or internal damage due to dropping is not covered under warranty.



Do not insert or remove song packs while MagicSing is turned on.



Do not store MagicSing in direct sunlight, in a high temperature, or highly humid.



Do not use strong chemicals to clean MagicSing, as these chemicals may damage the unit. Keep MagicSing away from pets and small children.



Do not press the LED / LCD part.



Never use a sharp object on the keypad.



In case MagicSing was stored in a high-temperature setting, allow sufficient time for it to cool down before using it.



Do not immerse MagicSing in water or splash water on it. Water damage is not covered by the warranty.



Do not disassemble the parts of the MagicSing. This will void the warranty.



Do not plug MagicSing in if it is wet. Immediately contact the service center. If any solid object or liquid gets inside MagicSing, unplug it and have it checked by our service center.

TROUBLESHOOTING

In case of problems, please check the following recommendations before contacting the service center.

If MagicSing doesn't power up

ET23KR MAIN STATION

Make sure the adaptor is correctly plugged into the power outlet. Check that the male plug is properly inserted into the female jack.

WIRELESS KARAOKE

Check if the battery type is AA. If the battery is low, MagicSing may not work properly.

If the user's voice cannot be heard

Press the VOL button and check the volume of the wireless karaoke.

If the TV does not show pictures or emit sound

Make sure all the AV connectors are properly connected according to the correct colors. Check if the TV is in the video mode.

If the video does not show properly (converting PAL or NSC mode)

To convert to PAL mode, turn off a wireless mic first. Press and hold button "8" on the wireless mic, and then press "POWER" button using another finger until the word "PAL" appears on the TV screen. (Do not release button "8" and the "POWER" button until the word "PAL" appears on the TV screen.) To convert to NTSC mode, turn off a wireless mic first. Press and hold button "9" on the wireless mic, and then press the "POWER" button using another finger until the word "NTSC" appears on the TV screen. (Do not release button "9" and the "POWER" button until the word "NTSC" appears on the TV screen.)

If there is any doubt about the product's performance

Turn off a wireless mic first, and then press and hold the "0" button on the wireless mic, and press the [POWER] button using another finger until the words "USER RESET" appear on the TV screen. (Do not release the "0" button and the [POWER] button until the words "USER RESE" appear on the TV screen)

When the wireless karaoke needs to be repaired, the main station should be included and returned to your nearest service center.

To contact our nearest service center in your area, please visit our website. "www.enter-tech.com"



VER.100

WWW.ENTER-TECH.COM

ENTER-TECH CO.,LTD.

Enter Bldg, 156-7, Ojeong-dong, Ojeong-gu, Bucheon-city, Kyunggi-do, 421-814, Korea
TEL : +82-32-680-9000 | FAX : +82-32-673-0818 | E-MAIL : enter@enter-tech.com
Designed by ENTER-TECH KOREA | Printed in China
VER.100