

## USB DOWNLOAD MANAGER - DESCRIPTION

### 1 FEATURES

#### A. RECORDING DATA

##### 1 DOWNLOAD SUPPORT

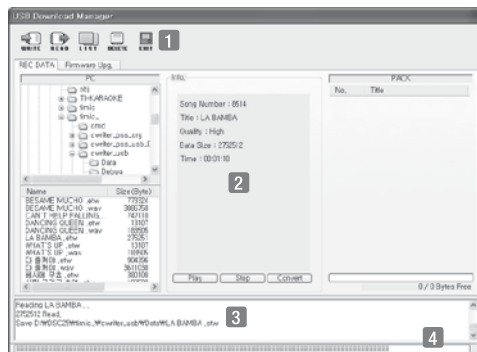
Download the recorded file(s) to the PC from the Recording Pack. Playback the 'etw' or 'wave' file on the PC. Convert the 'etw' file into a 'wave' file.

#### B. FIRMWARE UPGRADE

Firmware version check and upgrade  
Lets you check the current version of the MAGICISING firmware and upgrade it with a computer file.

### 2 DESCRIPTION OF THE USB DOWNLOAD MANAGER

#### A. USER INTERFACE LAYOUT



- 1 Basic button
- 2 Information on each section
- 3 Show current what?
- 4 Bar graph displays

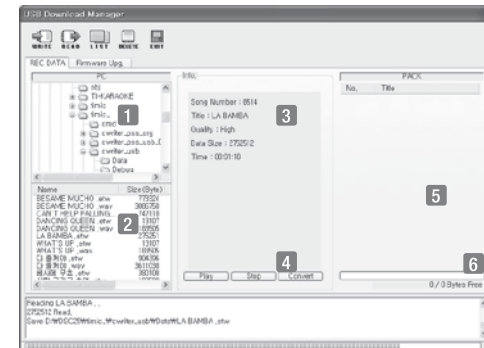
## B. DESCRIPTION OF THE USER INTERFACE

### 1. FEATURES OF THE BASIC BUTTONS



- WRITE** Upload data to the USB device
- READ** Download data from the USB device
- LIST** Download a list of data from the USB device
- DELETE** Delete the selected data
- EXIT** Exit the current program

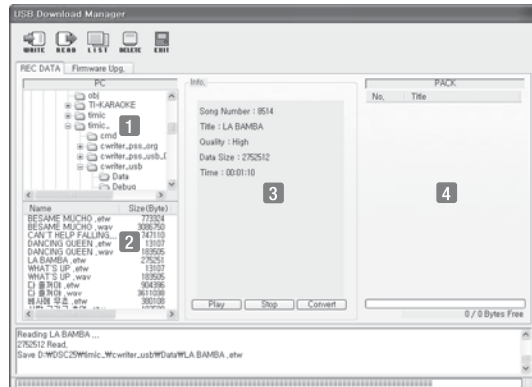
### 2. DESCRIPTION OF EACH SECTION AND BUTTON FUNCTION RECORDING DATA



#### DESCRIPTION OF EACH SECTION

- 1 This section displays the list of directories on the PC.
- 2 This section displays the list of recorded files on the PC.
- 3 This section displays detailed information on a selected file on the PC or the pack.
- 4 Play is used to playback a recorded file  
Stop is used to stop the playback.  
Convert is used to convert an 'etw' file into a 'wave' file.
- 5 This section displays existing recorded file of the pack.
- 6 This bar graph indicates the available memory in the pack.

### C. FIRMWARE UPGRADE



#### DESCRIPTION OF EACH SECTION

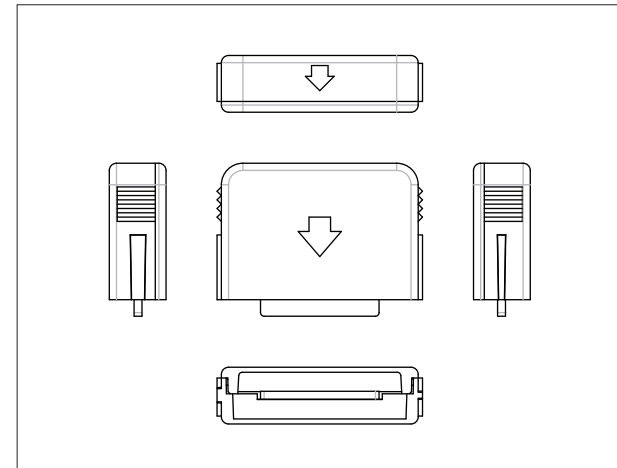
- 1 This section displays the list of directories on the PC.
- 2 This section displays the firmware files on the PC.
- 3 This section displays information on the selected file on PC.
- 4 This section displays information on the firmware of MAGICISING.

#### DESCRIPTION OF THE BUTTON FUNCTION

- LIST** Press the List button to display information on the MAGICISING firmware version.
- WRITE** Press the Write button to upload and update the firmware version of MAGICISING with the selected file (\*.BIN) on the PC.

### Recording Pack

You can record your own singing onto the Recording Pack.



- Turn off MAGICISING: MAGICISING should be turned off first.
- Insert the Recording Pack into the slot on the back of MAGICISING.
- Turn on the power of MAGICISING then select a song number and press the REC (Recording) button on the remote control.
- To stop the recording, press the REC (Recording) button on the remote control or on MAGICISING. You can also use the **■/▶** button.
- To replay the recorded songs, press the RES button on the remote control. Your recorded songs will be listed on the screen. Select a song using the **▼/▲** buttons, then press the **■/▶** button.
- To stop the playback, press the **■/▶** button.
- To delete the recorded songs, press the [RES] button then the Record button.

## Optional Items - Chapter.04

You cannot record your own singing on MAGICSING while you are recording your singing on the Recording Pack.

You cannot record your own singing at the middle of a song's playback. If you press the REC button in the middle of the song, the song will start playing again.

In the case of an additional recorded Song Pack and a downloaded Song Pack, songs cannot be deleted without the recorded song chips. Please use the Duet-Mic with them.

The Recording Pack can be used to record about 50 minutes worth of songs (about 10 songs).

The Tempo and Key will not work when you are playing recorded songs.

The quality of the recorded song will be normal.

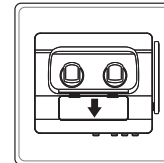
## Chapter.04 - Optional Items

### Additional Song Chips

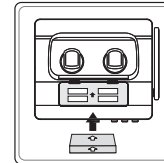
You can add more of your favorite songs to MAGICSING. There are many songs available.

#### How to Set up the Additional Song Chip

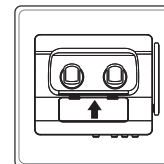
Turn OFF the power. This is very important before removing or adding a Song Chip.



- Turn off the power of MAGICSING.
- Press the back cover of MAGICSING, then remove the back cover.

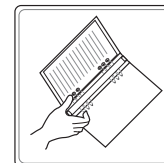


- Make sure the arrow on the Song Chip is pointing upward when you insert the Song Chip.  
(An additional 4 Song Chips can be inserted.)



- After the Song Chip is inserted, close the back cover.
- Turn on the power of MAGICSING.

#### How to Add to the Song List



- Press the top and bottom metal tabs of the binder to open the binder rings.
- Insert the new song list between the binder rings.
- Close the binder rings.

## PRECAUTIONS



Use only the adaptor that comes with MAGICSING. There are many adaptors that are plug-compatible with the jack of MAGICSING, but have different electrical specifications. These adaptors will work only for a short period of time and will damage MAGICSING.

### USE THE RECOMMENDED ACCESSORIES ONLY (DC 8 V / 620 mA)



Do not drop MAGICSING. Any sign of cosmetic or internal damage due to dropping will disqualify the product from coverage under the warranty.



Do not insert or remove Song Packs while MAGICSING is still on.



Do not store MAGICSING in direct sunlight and at high temperature and humidity.



Do not use strong chemicals to clean MAGICSING, as these chemicals may damage the unit. Keep MAGICSING away from pets and small children.



Do not press the LED part.



Never use a sharp object on the keypad.



In case MAGICSING was stored in a high-temperature setting, allow sufficient time for it to cool down before using it.



Do not immerse MAGICSING in water or splash water on it. Water damage is not covered by the warranty.



Do not take MAGICSING apart. This will void the warranty.



Do not plug MAGICSING in if it is wet. Immediately contact the service center. If any solid object or liquid gets inside MAGICSING, unplug it and have it checked by a service center.

## TROUBLESHOOTING

In case of problems, please check the following recommendations

### If MAGICSING doesn't power up

#### ET18K MAIN STATION

Make sure the adaptor is correctly plugged into the power outlet. Check that the male plug is properly inserted into the female jack.

#### WIRELESS MICROPHONE

Check if the battery type is AA. If the battery life is low, MAGICSING may not power up or work properly.

### If the user's voice cannot be heard

Press the VOL button and check the volume of the wireless microphone.

### If the TV does not show pictures or emit sound

Make sure all the AV connections are properly connected according to guide color. Check if the TV is already in the video mode

### If the TV screen stays still and MAGICSING won't turn off

Press the power button for 3 seconds or longer to turn off MAGICSING.

### If the video does not show properly

To convert to PAL mode, press and hold button 8. Using another finger, press and release the power button. Do not release button 8 until the word PAL appears on the TV screen. To convert to NTSC mode, press and hold button 9. Using another finger, press and release the power button. Do not release button 9 until the word NTSC appears on the TV screen.

### If there is any doubt about the product's performance

Press and hold the 0 button, Do not release this button yet. Using another finger press and release the power button. Do not release the 0 button until the words "USER RESET" appears on the TV screen.

**When the wireless karaoke microphone needs to be repaired, the main station should be included and returned to the nearest A/S center.**

**For repair service, please contact one of the following technical centers on the Warranty Card.**



**WWW.ENTER-TECH.COM**

VER.100

**ENTER-TECH CO.,LTD.**

Samhwa B/D, 401-5, Hwagok-7dong, Kangseo-gu, Seoul, Korea  
TEL : +82-2-2605-0884 | FAX : +82-2-2691-5354 | E-MAIL : enter@enter-tech.com  
Designed by ENTER-TECH KOREA | Printed in C hina  
VER.100

## Additional page

### User's Manual Information

#### **Do not**

Any changes or modifications to the equipment not expressly approved by the party responsible for compliance could void user's authority to operate the equipment.

#### **FCC Compliance Statement**

This device complies with part 15 of the FCC Rules. Operation is subject to the following two conditions:

- (1) This device may not cause harmful interference, and
- (2) This device must accept any interference received,

Including interference that may cause undesired operation

#### **Information to User**

This equipment has been tested and found to comply with the limits for a Class B digital device, Pursuant to part 15 of the FCC Rules. These limits are designed to provide reasonable protection against harmful interference in a residential installation. This equipment generates, uses and can radiate radio Frequency energy and, if not installed and used in accordance with the instructions, may cause harmful interference to radio communications.

However, there is no guarantee that interference will not occur in a particular installation. If this equipment does cause harmful interference to radio or television reception, which can be determined by turning the equipment off and on, the user is encouraged to try to correct the interference by one or more of the following measures:

- Reorient or relocate the receiving antenna.
- Increase the separation between the equipment and receiver
- Connect the equipment into an outlet on a circuit different from that to which the receiver is connected.
- Consult the dealer or an experienced radio/TV technician for help.

**RF exposure:** "FCC RF exposure requirements: The antenna(s) used for this transmitter must be installed to provide a separation distance of at least 20 cm from all persons and must not be co-located or operating in conjunction with any other antenna or transmitter."