

IV. How to Search a Song

- Enter English Words

[1] [2] A → B → C [3] D → E → F [4] G → H → I [5] J → K → L
[6] M → N → O [7] P → R → S [8] T → U → V [9] W → X → Y [0] SPACE

- Enter Number Words

[1] → 1 [2] → 2 [3] → 3 [4] → 4 [5] → 5
[6] → 6 [7] → 7 [8] → 8 [9] → 9 [0] → 0

- Enter Symbol Words

[1] . , - : ; [2] ' → " → ` [3] _ → = → ~ [4] + → - → * → / [5] ! → # → \$ → %
[6] & → ? → @ [7] ^ → ♯ → I [8] (→) → < → > [9] [→] [0] SPACE



(The search function disregards spaces. E.g. : If you want to search a song whose title is "A DONDE VOY," you only have to enter "AD" (without space in between characters) to perform the search.)

- Enter numbers Press the [0] ~ [9] buttons to enter numbers

- Examples

Enter "TOU" : Press [8] once → [6] three times → [8] two times

Enter "ABC" : [1] once → after the list changes → [1] two times
→ after the list changes → [1] three times

MY-MIC

- 1 You can save your own setup for a certain song that has been set while it is playing, such as the volume of music and melody, the microphone, microphone echo effect, and real sound, as well as the tempo and key information, and recall the setting when you want to sing the song again.

2 MY-MIC : SELECTING A SONG

- Pressing the [MY-MIC] button while selecting a song shows you the stored list of MY-MIC Songs.
- Select a song from the MY-MIC Song List and press the [▶/■] button to play the song with the stored setting.

3 MY-MIC : SAVING A SONG

- Press the [MY-MIC] button as a song is playing to save the song's current setting.
- If the song information has already been stored, it will be updated with a newer setting.

4 MY-MIC: DELETING A SONG

- Press the [MY-MIC] button while selecting a song to see the stored list of MY-MIC Songs.
- Using [▼], [▲], [◀◀], [▶▶] buttons to select a song to delete, and push the [RES] button to delete the selected song.

BACKGROUND THEME AND SCORE CHART

1 THIS FUNCTION CAN ONLY BE SET WHILE SELECTING A SONG

- If you have stored a song in the MY-MIC Song List, press the [MY-MIC] button to see the MY-MIC Song List and push [MY-MIC] again.
- If you do not have a song stored in the MY-MIC Song List, just press the [MY-MIC] button.

2 BACKGROUND THEME

- You can select any theme from a set of nine different themes as your background theme.
- Press [0] ~ [9] number keypads to set the theme.

[0] : Do not set any background theme.
[1] Love / [2] Party / [3] Summer / [4] Nature / [5] Carnival
[6] Sports / [7] City / [8] Country / [9] Tour

Once a background theme is set, only the selected image will appear on the background.

※ If you have background images stored in an SD Card, the setting in the Background Theme will be disregarded and only the images on the SD Card will be chosen.

3 SCORE CHART

- The Score Chart shows the number of songs that you have played so far as well as the corresponding scores.

JUMP PRELUDE / INTERLUDE (JUMP)

- 1 You can use JUMP only during the prelude or interlude of a song.
- 2 Press the JUMP button during the prelude or interlude to proceed to the part when the song's lyrics begin

REAL SOUND (MULTI-VOICE SONG)

1 MULTI-VOICE SONGS CONSIST OF THREE PARTS

- LIVE : Only music is played.
- VOCAL : The voice of the actual singer is played together with the music.
- CHORUS : The reprise part of a song and specific instruments are played

2 VOCAL

- The voice of the singer is played together with the music.
- If you want to mute or activate the voice of the singer, press the [VOCAL] button to turn it ON or OFF.
- If there is input signal to the microphone when the Guide Vocal Assist setting in the environment setting is ON, VOCAL is automatically turned OFF.

3 VOLUME ADJUSTMENT

- Press the Real Sound [-], [+] buttons on the remote controller to adjust the real sound volume

SCORE

1 DISPLAYING A SCORE

- Only songs with a score will show a score.
- The score appears on the screen as soon as the song starts.
※ During playback, the song's title recedes behind the score.
- The score will disappear from the screen if the user uses different functions such as searching a song, real-time song search, adjusting the music volume, melody, microphone and echo effect. The score reappears with the next measure.

GAME

1 SINGING CONTEST

- The Singing Contest is a duel between Team A and Team B who will sing three songs randomly chosen by ET18K. The team with the highest total score wins the game.
- Press [RES] to finish the game.

2 WHAT SONG IS IT

- What Song Is It is a game where the players name the title of a song. After selecting the game level, ET18K plays a song selected randomly from the list. You should choose the correct title of the song among the four possible answers shown on the screen.
- If you are wrong, you will lose one LIFE. You will be offered one bonus song every five questions and correctly naming this song's title wins you one LIFE.
- Select the level of the game before the game starts.

[1] Difficult – LIFE 3, Music playing duration : 15 sec.

[2] Normal – LIFE 4, Music playing duration : 30 sec.

[3] Easy – LIFE 5, Music playing duration : 60 sec.

※ Pressing any other button aside from [1] ~ [3] sets the level automatically to Normal.

3 BINGO GAME (To be added in the second half of 2008)

SD CARD SUPPORT

1 BACKGROUND IMAGES

- If you have background images in the folder named BACKGROUND on an SD card, ET18K will display them on the TV screen.
- Changing the background image.
 - Install "ET-MANAGER" using the CD provided with ET18K.
 - Execute "ET-MANAGER".
 - Select "BACKGROUND IMAGE" and change the format of image files that you have.
 - When changing the image file format, these files are stored in a folder set by the user with the file extension ".ebj".
 - Move the converted image files to BACKGROUND folder on the SD card, and insert the SD card into the slot of ET18K.
※ If the SD Card drive is designated as "E : \", and the converted image file is "image.ebj", move the "image.ebj" to "E:\BACKGROUND" folder.
- Supported image file formats.
 - Bitmap file (*.bmp) • JPEG file (*.jpg, *.jpeg)
 - TIF file (*.tif, *.tiff) • GIF file (*.gif)

2 MP3 (TO BE SUPPORTED IN THE SECOND HALF OF 2008)

※ ET18K supports SD cards up to 2 GB.

(4 GB and larger SD memories are to be supported in the second half of 2008.)

SETTING THE ENVIRONMENT

- 1 Press the [MODE][0] button to set the environment.
- 2 Finish the environment setting by pressing the [MODE] button.

3 HOW TO SET THE ENVIRONMENT.

- Change the setting by pressing the [1] ~ [9] keypads.
- Select an item using the [▼], [▲] buttons and change the setting with [▶/■], [◀◀], [▶▶] buttons.
- Select an item with [▼], [▲] buttons, press the [0] button and change the setting with the [▼], [▲] buttons.

4 BASIC ENVIRONMENT SETTING

- External Video : External Video ON/OFF.
- VOCA L: VOCAL ON/OFF.
- OUTPUT MODE : Set the output mode to TV or AMP.
- Lyrics Background Bar: Turn ON/OFF the single-color lyrics background bar.
- Mic Voice Transformation: Wired or wireless microphone voice transformation function enables you to change your voice either to a man's or a woman's voice.
- SCORE: Score description ON/OFF.

5 ADVANCED ENVIRONMENT SETTING


- Press [7] in the Basic Environment Setting Mode to enter into the Advanced Environment Setting Mode.
- Score Display: Score Display ON/OFF.
- Real-time Score Display : Real-time Score Display ON/OFF.
- Lyrics Start Display Mode : Counting (4, 3, 2, 1) Display ON/OFF.
- Setting the Number of Lyric Lines : 2 lines, 3 lines, Automatic.
- Lyrics Display Alignment Setting: Center, Left-Right, Automatic.
- Language: Select the language for the system.
- Reserved Songs (Favorite Songs) Management.


- Press the [▼], [▲] buttons and select "LOAD". Then, press [0] to recall the reserved song that you saved.
- Press [▼], [▲] and select "SAVE". Then, press [0] to save the currently reserved song. You can "LOAD" again the reserved song that was saved in this way after you turned OFF the ET18K.
- Press the [▼], [▲] select "DELETE" and press [0] to delete the reserved song that was saved.
- MY-MIC Management
 - Press [▼], [▲] select "LOAD", and press [0] to recall the saved MY-MIC song.
 - Press the [▼], [▲] select "SAVE", and push [0] to save the MY-MIC with the current setting. You can "LOAD" again the saved song after ET18K is turned OFF.
 - Press [▼], [▲] select "DELETE", and press [0] to delete the saved MY-MIC song.



CONFIGURATION MENU



CONFIGURATION			
1	EXT VIDEO INPUT OFF	ON/OFF sets the external video input ON/OFF	ON / OFF
2	OUTPUT MODE	According to the setting circumstance, selects the output mode.	TV MODE AMP (Amplifier) MODE
3	ADVANCED CONFIGURATION	Provides access to the other functions and settings of ET18K	

Press  three times to enter the configuration menu, then press the corresponding number on the left side of the function to select an option.

※ Press the  button to exit the configuration menu.

ADVANCED CONFIGURATION MENU

ADVANCED CONFIGURATION			
1	SCORE CHECK	A singer can gauge his/her singing skills by the score he/she gets.	ON / OFF
2	REAL-TIME SCORE	Shows the score of the singer while the song is still being sung.	ON / OFF
3	LYRIC START HELP	Turns on or off the countdown that flashes before the lyrics appear.	ON / OFF
4	LYRIC LINE	Selects the number of lyrics lines shown on the TV screen.	Auto 2Lines / 3 Lines
5	LYRIC FORMAT	Selects the arrangement of the lyrics lines	Center/Left-Right Mix / All
6	MESSAGE LANGUAGE	Selects the language used in the menus.	
7	RES-SONG CONTROL	Stores and retrieves the list of reserved songs in the mic. The list is retained even after the mic is turned off.	Save/Delete/ Load/ Done

Press  button three times, then press  to enter the Advanced Configuration Menu, then press the corresponding number on the left side of the function to select an option.

※ Press the  button to exit the advanced configuration menu.

Instructions for the ADVANCED CONFIGURATION MENU

1 SCORE CHECK

Shows how well you sang a song by evaluating your tempo and pitch.

2 REAL-TIME SCORE

Shows how well you sang a song in real time.

3 LYRICS START HELP

Turns the lyrics countdown on or off before you start to sing a song.

4 LYRIC LINE

Shows the number of lyrics lines on the screen.
(2 Lines, 3 Lines, Auto)

5 LYRIC FORMAT

Sets the position of the lyrics on the screen.
(Center, Left-Right, Mix All)

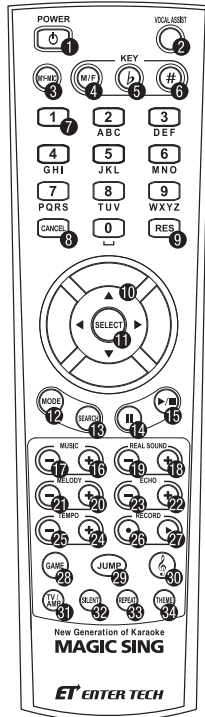
6 MESSAGE LANGUAGE

Selects a language. The message will be changed automatically with the language you selected.

7 RES-SONG CONTROL

Stores and retrieves the list of reserved songs on MAGICISING. The list is retained even after MAGICISING is turned off. After reserving all the songs you want, simply access this function and select SAVE to store the list. The next time MAGICISING is turned on, simply access this function and select LOAD to retrieve the list.

MAGIC SING REMOTE CONTROLLER

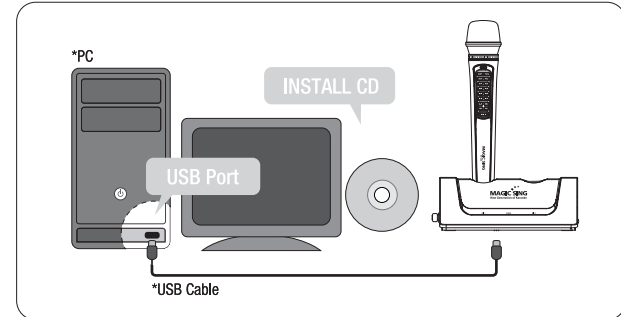


1 POWER POWER ON/OFF
2 VOCAL Vocal Assist ON / OFF
3 MY-MIC MY-MIC
4 KEY : M / F Converts voice to man's or woman's voice
5 KEY <i>b</i> Lower the key by one step

6 KEY # Raise the key by one step	21 MELODY - Lower REAL SOUND Volume by one step
7 0~9 Arabic Number	22 ECHO + Echo Volume Up by One Step
8 CANCEL CANCEL	23 ECHO - Echo Volume Down by One Step
9 RES Reservation and Cancel Reservation	24 TEMPO + Speed Up the song by one step
10 ▲, ▼, ◀, ▶ Navigation Key, Volume Control, List up and Down	25 TEMPO - Speed Down the song by one step
11 SELECT Select	26 REC Recording
12 MODE Functions	27 REC Replay (Shows the list of recorded songs with Recording Pack)
13 SEARCH Song Search	28 GAME Singing Contest / What Song Is It? / Bingo Game (To Be Installed~)
14 PAUSE	29 JUMP Prelude/Interlude Jump
15 PLAY/STOP	30 Musical Note
16 MUSIC + Volume up by one step	31 TV/AMP TV/AMP Mode Setting
17 MUSIC - Volume down by one step	32 SILENT Silent Mode
18 REAL SOUND + Raise REAL SOUND Volume by one step	33 REPEAT Section Repeat
19 REAL SOUND - Lower REAL SOUND Volume by one step	34 THEME Scoreboard & Select Background Theme
20 MELODY + Raise Melode Volume by one step	

USB DOWNLOAD MANAGER - INSTALLATION

This section shows you how to download recorded files to your computer.



NOTE

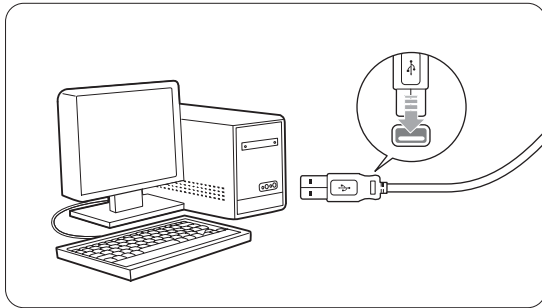
This feature is only available when you purchase a recording pack. Please consult your retailer for details. The installation files for both the USB driver and the Download Manager are available at the Enter-tech web site (www.enter-tech.com)

1 HOW TO INSTALL THE DRIVER

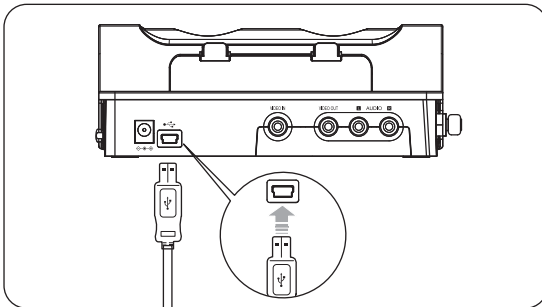
Please install the driver before connecting MAGIC SING to the PC. You need to install the driver only once. Please click the file that you downloaded from our website to install the driver. When you see the screen below, click the Continue Anyway.

2 HOW TO CONNECT MAGICISING TO A PC WITH A USB CABLE

Plug the USB cable to the PC's USB port, as shown in the picture below.



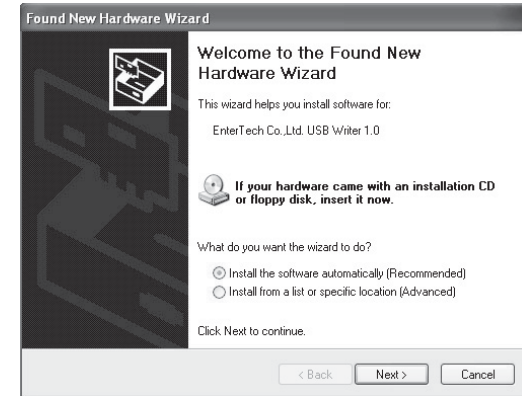
Plug the USB cable to the PC's USB port, as shown in the picture below.



< CONNECTED > will appear on the LCD of MAGICISING.

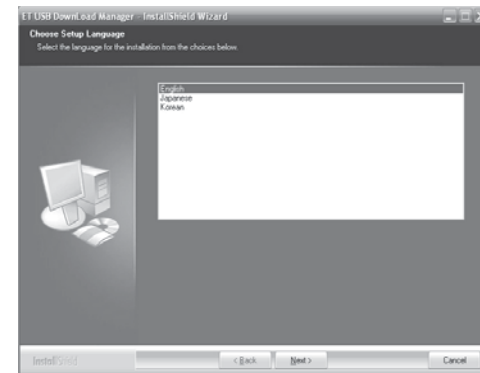
3 THE FOUND NEW HARDWARE WIZARD

After connecting MAGICISING to the PC with a USB cable, you should see the < Found New Hardware > Wizard below. Click < Next > When you see the screen below, click the Next button..



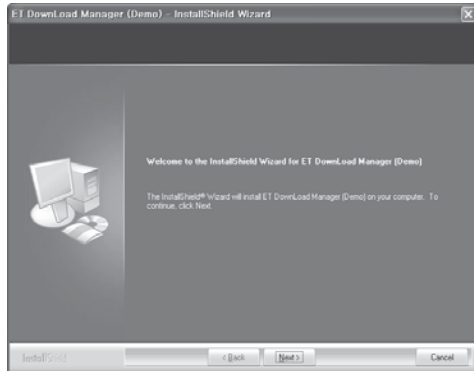
4 HOW TO INSTALL THE USB DOWNLOAD MANAGER

- 1 Please visit our website (www.enter-tech.com), select a country, then click the download icons on the download page.
- 2 Click the Download Manager icon to download the installation file.
- 3 Double-click the installation file.
- 4 Select an operating language, then click < Next >.



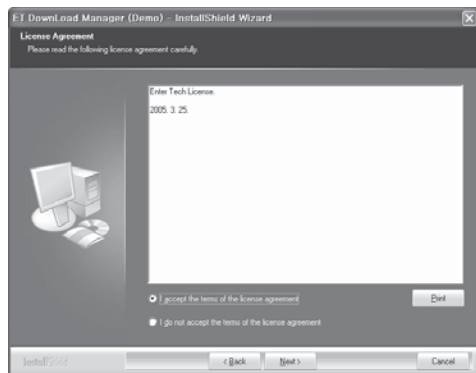
Functions & Settings - Chapter.03

- 5 The Installation Wizard will start. Click < Next >



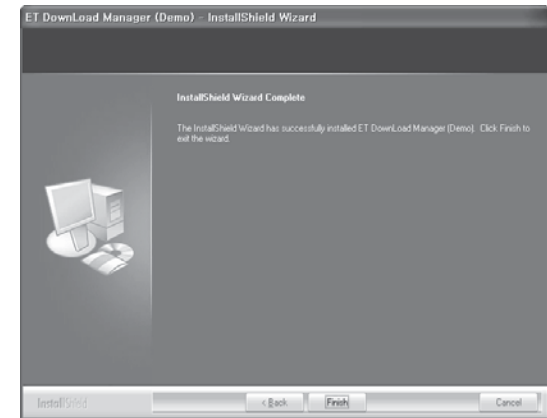
- 6 Check License Agreement

Please read the License Agreement, then click Next if you agree to the terms and conditions of the Agreement.



Chapter.03 - Functions & Settings

- 7 LAST STEP : CLICK < Finish >



2nd WIRELESS MICROPHONE

Enjoy singing with a friend with two wireless microphones. You can use the various functions that are also available in MAGICSING (main station).

