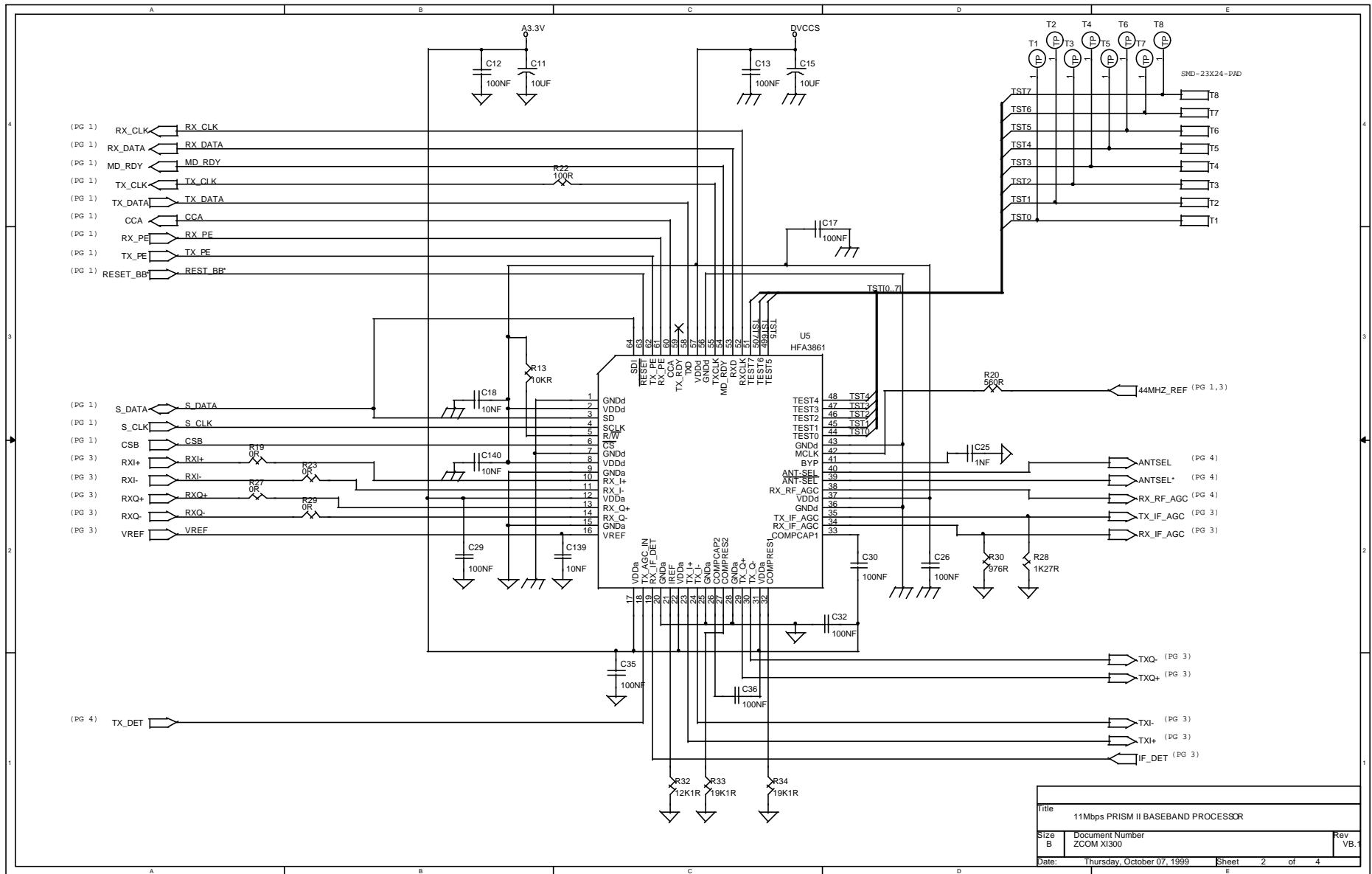


- RADIO_PD (PG 3)
- TR_SW (PG 4)
- TX_DATA (PG 2)
- TX_CLK (PG 2)
- RX_DATA (PG 2)
- RX_CLK (PG 2)
- XTAL1 44MHZ_REF (PG 2,3)

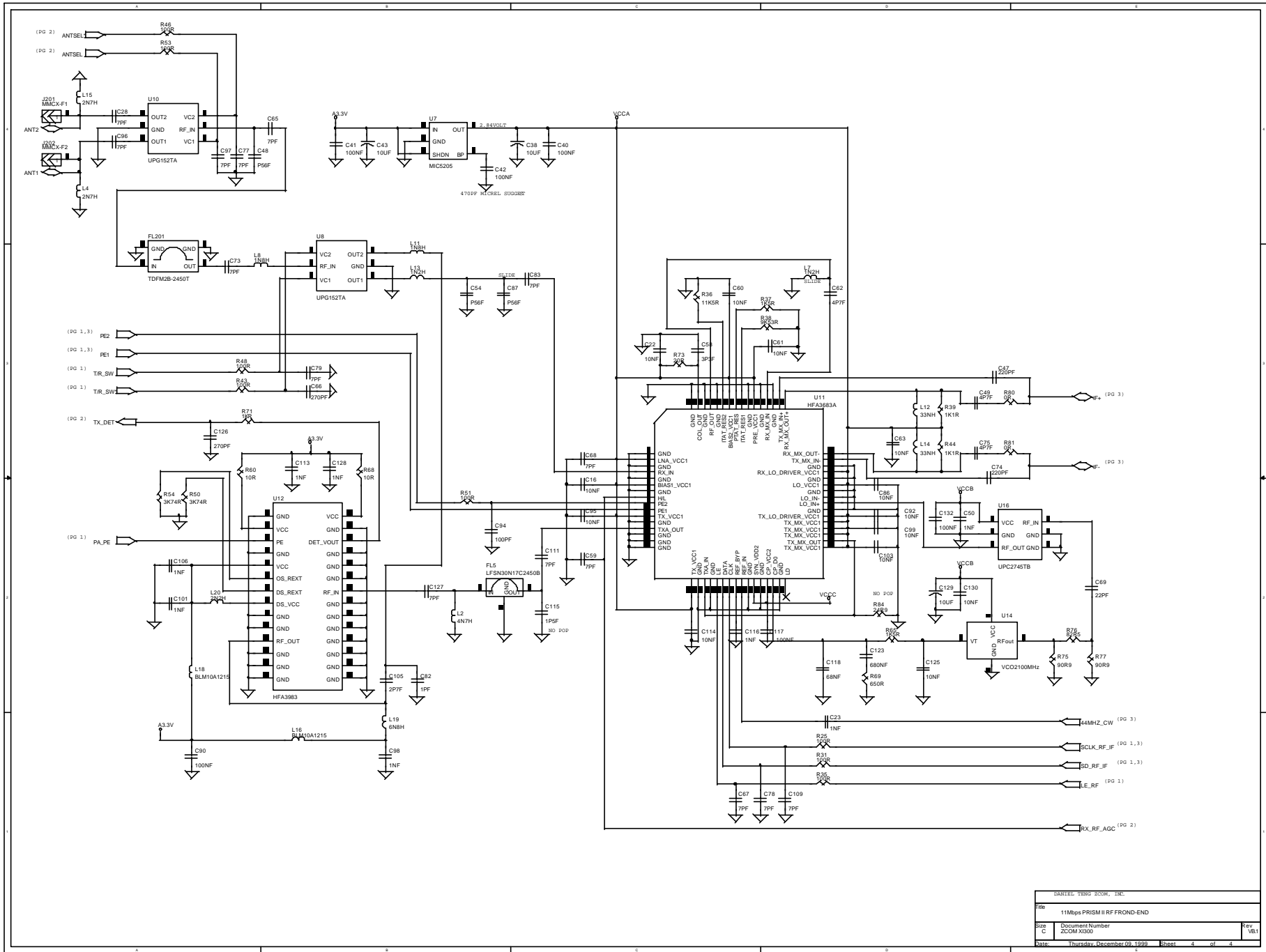
- CSB (PG 2)
- S_CLK (PG 2)
- S_DATA (PG 2)
- PE1 (PG 3,4)
- LE_IF (PG 3)

- TR_SW* (PG 4)
- LE_RF (PG 4)
- SCLK_RF_IF (PG 3,4)
- SD_RF_IF (PG 3,4)
- PA_PE (PG 4)
- PE2 (PG 3,4)
- MD_RDY (PG 2)
- CCA (PG 2)
- CAL_EN (PG 3)
- TX_PE (PG 2)
- RX_PE (PG 2)
- RESET_BB* (PG 2)

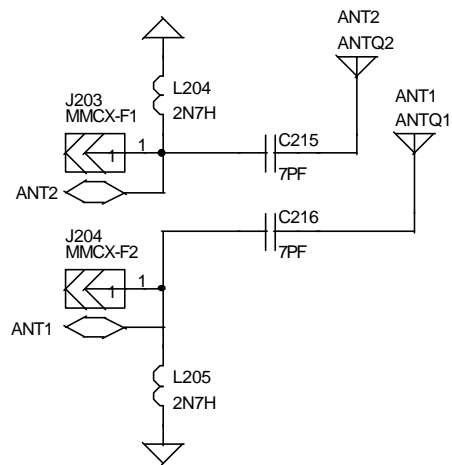
Part	11Mbps PRISM II MAC	Rev	1.0
Size	Document Number ZCCM X030	Rev	1.0
Date	Monday, December 18, 1999	Sheet	1 of 4



Title		
11Mbps PRISM II BASEBAND PROCESSOR		
Size	Document Number	Rev
B	ZCOM X1300	VB.1
Date:	Thursday, October 07, 1999	Sheet 2 of 4



Diversity Patch Antenna



Patch Antenna Gain < 2dBi

Title		
Xi300 Vb.3		
Size	Document Number	Rev
A	Patch antenna	{RevCode}
Date:	Thursday, December 09, 1999	Sheet 1 of 1

