



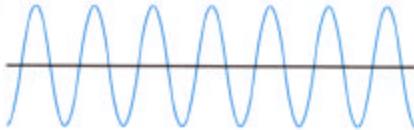
The input jack (labeled with this microphone icon) accepts either standard line-level signals like tape decks, VCRs, musical equipment and such, or microphone-level signals like standard "PC"-style desktop microphones, headsets, hand-helds and more. The input type is selected via the slide switch in between the two audio connectors. For mike level devices push the switch towards the speaker icon. For line level devices push the switch toward the microphone icon. This will amplify the signal; without it the microphone will be almost inaudible.

## Troubleshooting

### ■ When I record from my tape deck (or other line-level device) the playback is very distorted and loud

► Make sure the selector switch on the iMic is set for line-level. The microphone-level setting adds a fair amount of amplification to boost the signal, but line-level inputs are already at the correct level and will severely distort if amplified. This overload is easy to see using an audio application that allows you to see the recorded waveform; all the peaks will be chopped off. (Figure 4)

Notice the peaks, nice and rounded



Notice the peaks, all flattened and clipped



FIGURE 4

### ■ When I use a microphone the input level is so low that I have to shout to get anything at all

► Make sure you have the selector switch on the iMic in the microphone-level position as shown in figure 5. For mike level devices push the switch towards the speaker icon. For line level devices push the switch toward the microphone icon. This will amplify the signal; without it the microphone will be almost inaudible.



FIGURE 5

### ■ I have the iMic selector switch set properly for my input type, but I still get no sound in the computer

► Make sure you have the iMic selected for use in your Sound control panel as shown in Figure 6.

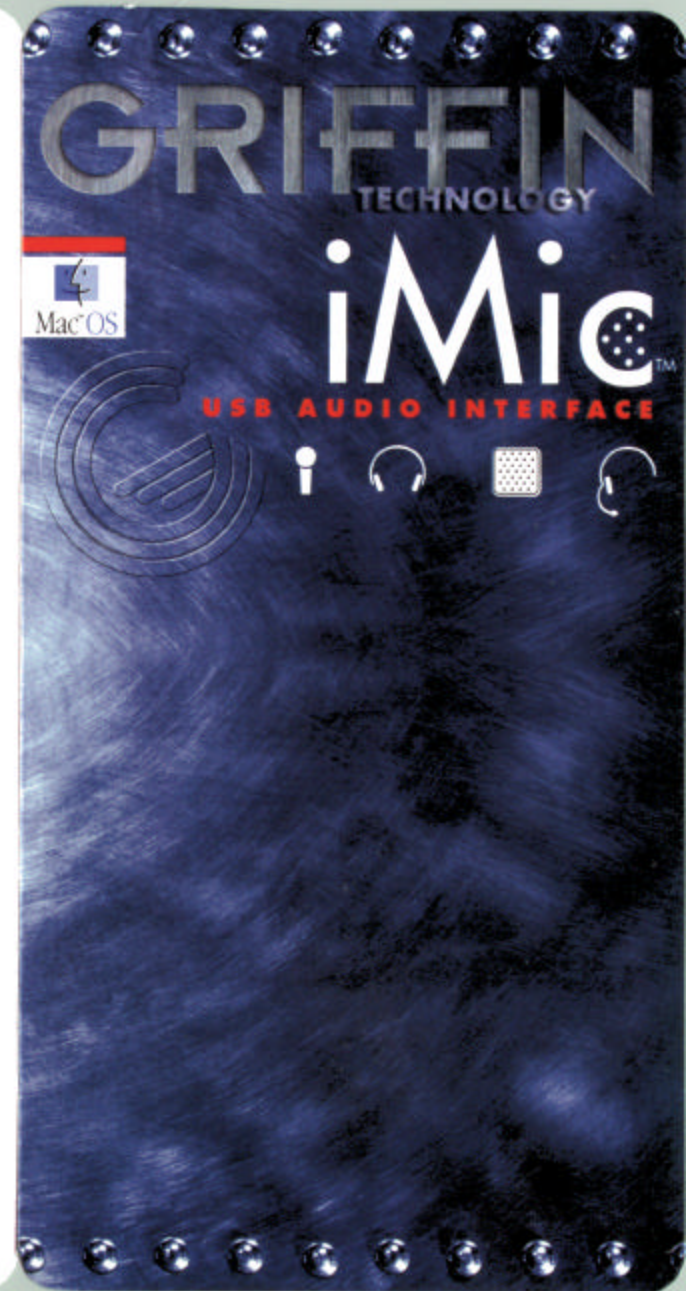


FIGURE 6

### ■ I can get audio in to the computer using the iMic, but I can't get sound out

► Make sure you have the iMic selected for use in the Sound control panel as shown in Figure 6.

For additional documentation, updates, FAQs and more please visit the iMic area of our web site at <http://www.griffintechology.com/imic.html>



## Setting up the iMic

### Read these instructions carefully before proceeding

- 1 Turn your computer on and allow it to boot up normally.
- 2 When the MacOS has finished loading plug the iMic into an available USB port, preferably one of the ports on the computer itself. Do not connect output devices such as speakers to the iMic yet in the off chance the output might default to very high levels, potentially damaging your equipment.
- 3 After a moment the MacOS will load the appropriate software for the iMic, and there will be entries in the Sound control panel under both Input and Output for "USB Audio". During the time the MacOS loads the drivers you may not notice anything happening, but rest assured that the Mac is busy and should not be disturbed for a few seconds after connecting the iMic.
- 4 In order to use the iMic for audio input, simply select the "USB Audio" entry in the Sound control panel's Input section as shown in Figure 1.

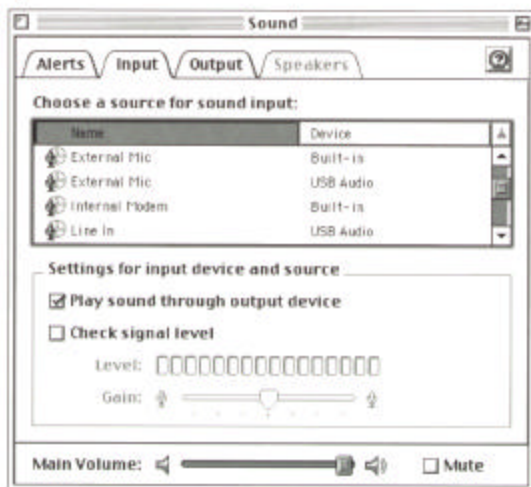


FIGURE 1

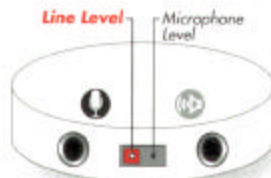


FIGURE 2

The control for switching the input between line level and microphone level is on the iMic itself, between the input and output jacks (Figure 2). For mike level devices push the switch towards the speaker icon. For line level devices push the switch toward the microphone icon. The only difference is the "External Mic" input disables the "Play sound through output device" option.

*Note that you may need to close and restart any open audio applications in order for them to detect the presence of the iMic.*

- 5 Similarly, select the "USB Audio" entry in the Output section as shown in Figure 3 if you wish to route all Mac audio to the iMic.



FIGURE 3

In Figure 1 you see that the Input Source is listed as "External Mic", but it makes absolutely no difference to the Mac if you have the Input Source set to "Line Level".

## iMic USB Audio Interface

### GENERAL

- High Quality USB-compliant Audio device
- Supports 12 Mb/s serial data transmission
- Fully USB Plug and Play operation
- Supports bus-powered operation
- Low power consumption with efficient power control

### AUDIO PLAYBACK CHANNEL

- Supports multiple audio data formats (8, 16 and 24 bits)
- Adaptive sample frequency support from 5 to 55 kHz
- Low total harmonic distortion (typical 90 dB)
- High signal-to-noise ratio (typical 95 dB)
- One stereo Line output.

### AUDIO RECORDING CHANNEL

- Supports multiple audio data formats (8, 16 and 24 bits)
- Low total harmonic distortion (typical 85 dB)
- High signal-to-noise ratio (typical 90 dB)
- One stereo Line/Microphone input.

### SYSTEM REQUIREMENTS

- Macintosh with USB Port(s)
- Mac OS 9.0.4 or greater

FCC No. PAV-IMIC2020



Griffin Technology Corporation  
1619 Elm Hill Pike  
Nashville, Tennessee 37210  
support@grifintechology.com  
www.grifintechology.com  
Telephone 615.255.0990

Apple® and Macintosh® are registered trademarks of Apple Computer Inc.



The input jack (labeled with this microphone icon) accepts either standard line-level signals like tape decks, VCRs, musical equipment and such, or microphone-level signals like standard "PC"-style desktop microphones, headsets, handhelds and more. The input type is selected via the slide switch in between the two audio connectors. For mike level devices push the switch towards the speaker icon. For line level devices push the switch toward the microphone icon. This will amplify the signal; without it the microphone will be almost inaudible.

## Troubleshooting

### ■ When I record from my tape deck (or other line-level device) the playback is very distorted and loud

► Make sure the selector switch on the iMic is set for line-level. The microphone-level setting adds a fair amount of amplification to boost the signal, but line-level inputs are already at the correct level and will severely distort if amplified. This overload is easy to see using an audio application that allows you to see the recorded waveform; all the peaks will be chopped off. (Figure 4)

Notice the peaks, nice and rounded



Notice the peaks, all flattened and clipped



FIGURE 4

### ■ When I use a microphone the input level is so low that I have to shout to get anything at all

► Make sure you have the selector switch on the iMic in the microphone-level position as shown in figure 5. For mike level devices push the switch towards the speaker icon. For line level devices push the switch toward the microphone icon. This will amplify the signal; without it the microphone will be almost inaudible.

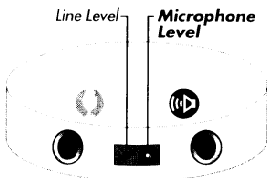


FIGURE 5

### ■ I have the iMic selector switch set properly for my input type, but I still get no sound in the computer

► Make sure you have the iMic selected for use in your Sound control panel as shown in Figure 6.

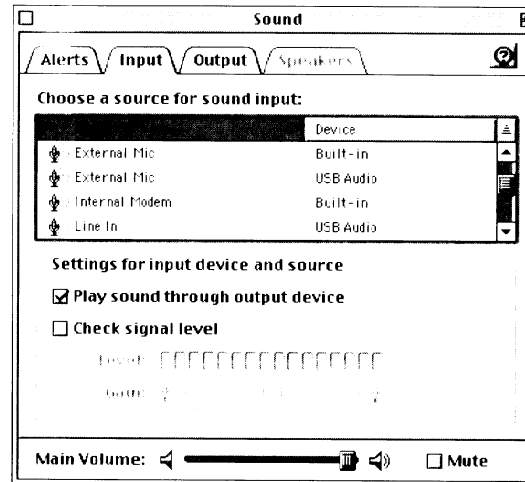
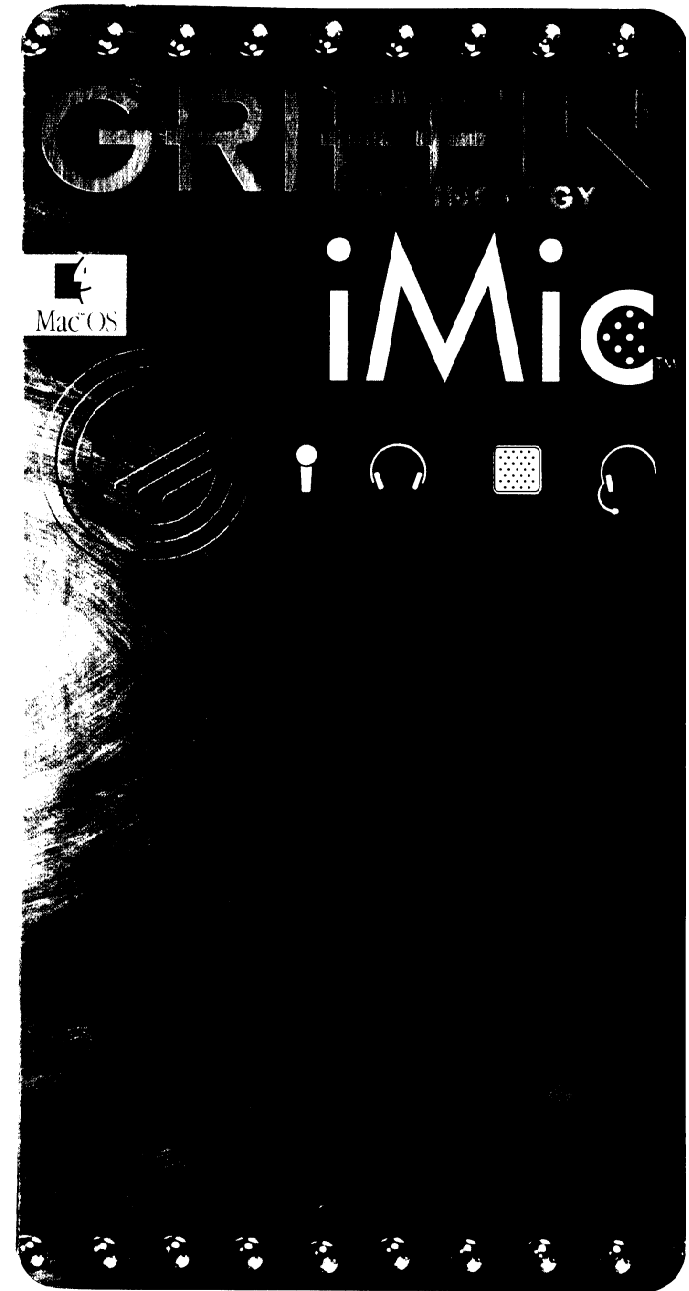


FIGURE 6

### ■ I can get audio in to the computer using the iMic, but I can't get sound out

► Make sure you have the iMic selected for use in the Sound control panel as shown in Figure 6.

For additional documentation, updates, FAQs and more please visit the iMic area of our web site at <http://www.griffintechology.com/imic.html>



## Setting up the iMic

### Read these instructions carefully before proceeding

- 1 Turn your computer on and allow it to boot up normally.
- 2 When the MacOS has finished loading plug the iMic into an available USB port, preferably one of the ports on the computer itself. Do not connect output devices such as speakers to the iMic yet in the off chance the output might default to very high levels, potentially damaging your equipment.
- 3 After a moment the MacOS will load the appropriate software for the iMic, and there will be entries in the Sound control panel under both Input and Output for "USB Audio". During the time the MacOS loads the drivers you may not notice anything happening, but rest assured that the Mac is busy and should not be disturbed for a few seconds after connecting the iMic.
- 4 In order to use the iMic for audio input, simply select the "USB Audio" entry in the Sound control panel's Input section as shown in Figure 1.

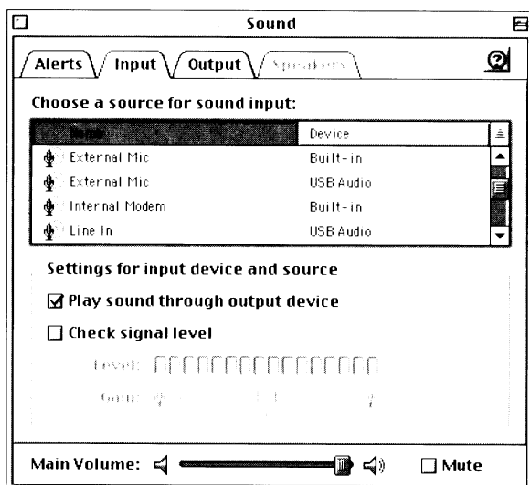


FIGURE 1

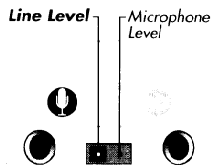


FIGURE 2

The control for switching the input between line level and microphone level is on the iMic itself, between the input and output jacks (Figure 2). For mike level devices push the switch towards the speaker icon. For line level devices push the switch toward the microphone icon. The only difference is the "External Mic" input disables the "Play sound through output device" option.

*Note that you may need to close and restart any open audio applications in order for them to detect the presence of the iMic.*

- 5 Similarly, select the "USB Audio" entry in the Output section as shown in Figure 3 if you wish to route all Mac audio to the iMic.

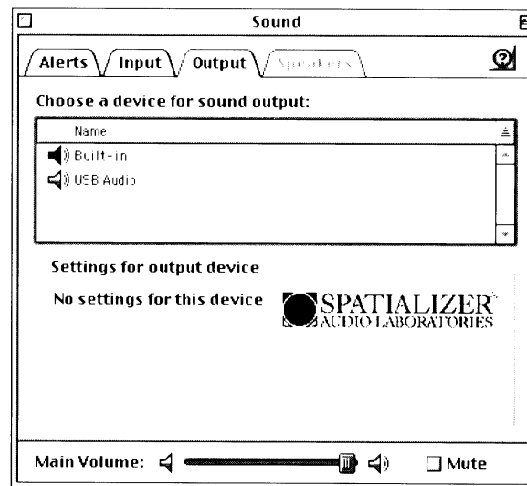


FIGURE 3

In Figure 1 you see that the Input Source is listed as "External Mic", but it makes absolutely no difference to the Mac if you have the Input Source set to "Line Level".

## iMic USB Audio Interface

### GENERAL

- High Quality USB-compliant Audio device
- Supports 12 Mb/s serial data transmission
- Fully USB Plug and Play operation
- Supports bus-powered operation
- Low power consumption with efficient power control

### AUDIO PLAYBACK CHANNEL

- Supports multiple audio data formats (8, 16 and 24 bits)
- Adaptive sample frequency support from 5 to 55 kHz
- Low total harmonic distortion (typical 90 dB)
- High signal-to-noise ratio (typical 95 dB)
- One stereo Line output.

### AUDIO RECORDING CHANNEL

- Supports multiple audio data formats (8, 16 and 24 bits)
- Low total harmonic distortion (typical 85 dB)
- High signal-to-noise ratio (typical 90 dB)
- One stereo Line/Microphone input.

### SYSTEM REQUIREMENTS

- Macintosh with USB Port(s)
- Mac OS 9.0.4 or greater

FCC No. PAV-IMIC2020



Griffin Technology Corporation  
1619 Elm Hill Pike  
Nashville, Tennessee 37210  
support@griffintechnology.com  
www.griffintechnology.com  
Telephone 615.255.0990

Apple® and Macintosh® are registered trademarks of Apple Computer Inc.