



# 品名：RFCBA100617SA6B307

## 1. Explanation of part number :

RF	CBA	1006	17	S	A	6	B	3	07
Type Code	Product Code	Dipole Dimension (Unit: mm)	Cable Length (unit: cm)	Connector Brand	Type of Connector	Application	Project status	Wire Diameter	Project
RF Device	CBA: Cable Assembly	Per 2 digits of length, width  e.g.: 1006 Length 10mm, Width 6.35mm	2 digits for cable length  e.g.: 30 Length 30cm	A: N C:MCX D:IPEX III E: IPEX IV F: IPEX A13 H: Hirose I: IPEX M: MMCX S: SMA T: TNC U:MURATA N: None	A: Reverse Female <b>B: Reverse Male</b> F: Female M: Male <b>N: None</b>	<b>0: 0GHz</b> <b>3: 3GHz</b> <b>5: 5 GHz</b> <b>6: 6GHz</b> A: 2.4GHz ISM band B: GSM 900/1800 dual band G: GPS band L: 2.4/5.2/5.8 GHz tri-band <b>N: NFC</b> <b>T:LTE band</b> <b>W: WCDMA band</b>	B: MP <b>T:During Test</b> X: Pile Run	0:None 1:Ø0.81 2:Ø1.32 3:Ø1.13 4:Low Loss Ø1.13 5:Ø0.50 6:RG316 7:Ø1.37 8:RG178 9:Low Loss Ø1.37 A:RG174 B:RG178 單芯線	01~99 series number

## 2. Electrical Specification :

Item	Specification
Frequency Range	DC~6GHz
Impedance	50 Ohm Nominal
VSWR	2.0 (Max)
Insertion Loss	≤ -2.0dB
Operation Temperature	-20°C ~ +65°C

UNLESS OTHER SPECIFIED TOLERANCES ON :  
 X=N/A      X.X=N/A      X.XX=N/A  
 ANGLES=N/A      HOLEDIA=N/A



**INPAQ TECHNOLOGY CO., LTD.**

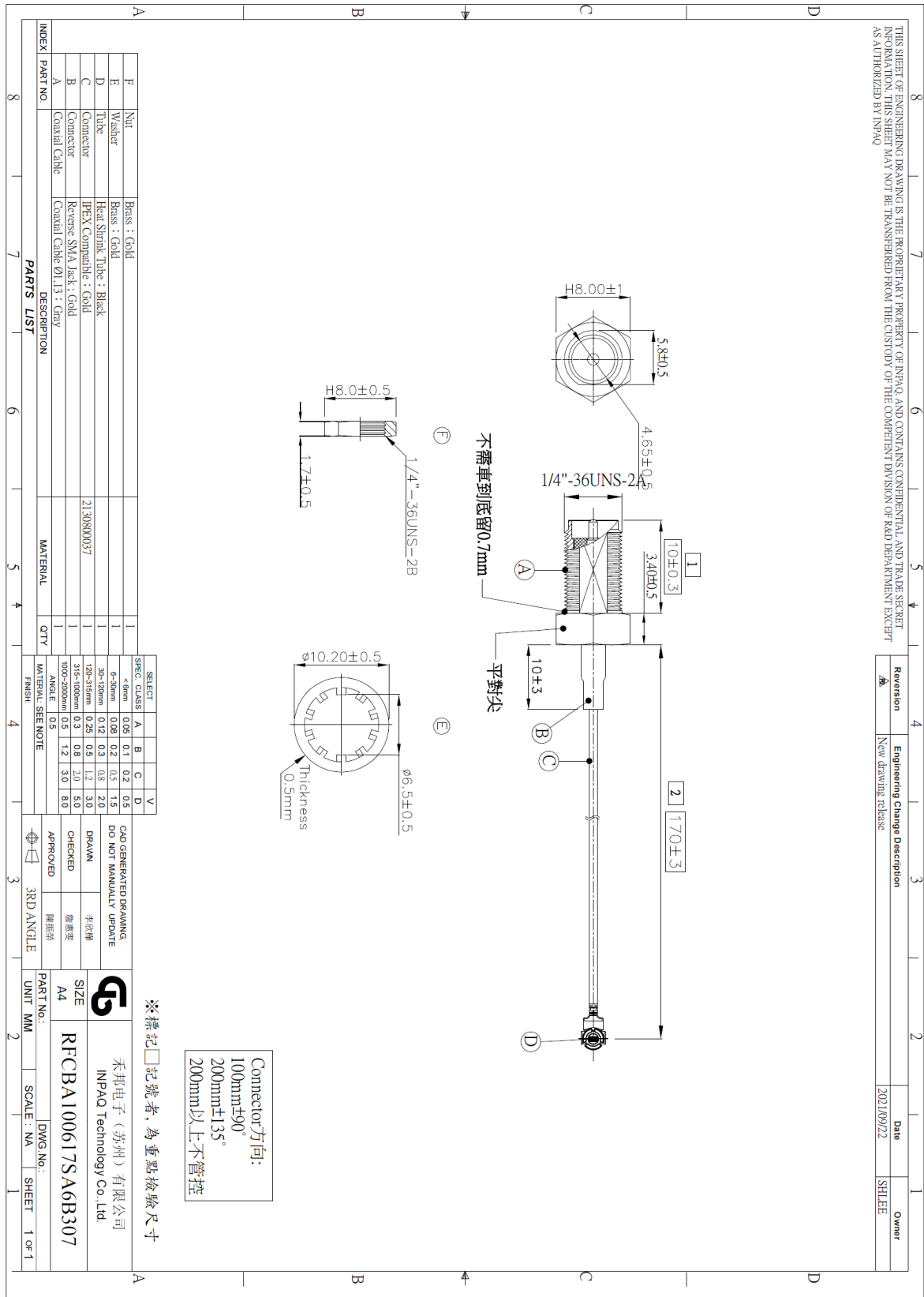
SCALE : N/A      UNIT : mm  
 DRAWN BY : 李欣樺      CHECKED BY : 詹惠雯  
 DESIGNED BY : 林育帆      APPROVED BY : 陳振榮

THIS DRAWINGS AND SPECIFICATIONS ARE THE PROPERTY OF INPAQ TECHNOLOGY CO.,LTD.AND SHALL NOT BE REPRODUCED OR USED AS THE BASIS FOR THE MANUFACTURE OR SALE OF APPARATUS OR DEVICES WITHOUT PERMISSION

TITLE : RFCBA100617SA6B307

DOCUMENT NO.      SPEC REV. P0

### 3. Antenna Drawing :



THIS SHEET OF ENGINEERING DRAWING IS THE PROPRIETARY PROPERTY OF INPAQ, AND CONTAINS CONFIDENTIAL AND TRADE SECRET INFORMATION. THIS SHEET MAY NOT BE TRANSFERRED FROM THE CUSTODY OF THE COMPETENT DIVISION OF R&D DEPARTMENT EXCEPT AS AUTHORIZED BY INPAQ

Revision	Engineering Change Description	Date	Owner
A	New drawing release	2022/09/22	SHJEE

INDEX	PART NO.	DESCRIPTION	MATERIAL	QTY	FINISH	ANGLE	SECTION	APPROVED	3RD ANGLE	PART NO.	UNIT	MM	SCALE	NA	SHEET	1 of 1
F	Nut	Brass : Gold		1												
E	Washer	Brass : Gold		1												
D	Tube	Heat Shrink Tube : Black		1												
C	Connector	IPHX Compatible : Gold	2130800037	1												
B	Connector	Reverse SMA Jack : Gold		1												
A	Coaxial Cable	Coaxial Cable 01.13 : Gray		1												

Connector 方向:  
100mm±90°  
200mm±135°  
200mm以上不管控

※標記□記號者, 為重點檢驗尺寸

UNLESS OTHER SPECIFIED TOLERANCES ON :		
X = N/A	X.X = N/A	X.XX = N/A
ANGLES = N/A		HOLEDIA = N/A
SCALE : N/A	UNIT : mm	
DRAWN BY : 李欣樺	CHECKED BY : 詹惠愛	
DESIGNED BY : 林育帆	APPROVED BY : 陳振榮	
TITLE : RFCBA100617SA6B307		

DOCUMENT NO.	SPEC REV.