

品名：RFCBA100610SA6B322

1. Explanation of part number :

RF	CBA	1006	10	S	A	6	B	3	22
Type Code	Product Code	Dipole Dimension (Unit: mm)	Cable Length (unit: cm)	Connector Brand	Type of Connector	Application	Project status	Wire Diameter	Project
RF Device	CBA: Cable Assembly	Per 2 digits of length, width e.g.: 1006 Length 10mm, Width 6.35mm	2 digits for cable length e.g.: 30 Length 30cm	A: N C:MCX D:IPEX III E: IPEX IV F: IPEX A13 H: Hirose I: IPEX M: MMCX S: SMA T: TNC U:MURATA N: None	A: Reverse Female B: Reverse Male F: Female M: Male N: None	0: 0GHz 3: 3GHz 5: 5 GHz 6: 6GHz A: 2.4GHz ISM band B: GSM 900/1800 dual band G: GPS band L: 2.4/5.2/5.8 GHz tri-band N: NFC T:LTE band W: WCDMA band	B: MP T:During Test X: Pile Run	0:None 1:Ø0.81 2:Ø1.32 3:Ø1.13 4:Low Loss Ø1.13 5:Ø0.50 6:RG316 7:Ø1.37 8:RG178 9:Low Loss Ø1.37 A:RG174 B:RG178 單芯線	01~99 series number

2. Electrical Specification :

Item	Specification
Frequency Range	DC~6GHz
Impedance	50 Ohm Nominal
VSWR	2.0 (Max)
Insertion Loss	≤ -2.0dB
Operation Temperature	-20°C ~ +65°C

UNLESS OTHER SPECIFIED TOLERANCES ON :
 X=N/A X.X=N/A X.XX=N/A
 ANGLES=N/A HOLEDIA=N/A



INPAQ TECHNOLOGY CO., LTD.

SCALE : N/A

UNIT : mm

DRAWN BY : 李欣樺

CHECKED BY : 詹惠雯

DESIGNED BY : 林育帆

APPROVED BY : 陳振榮

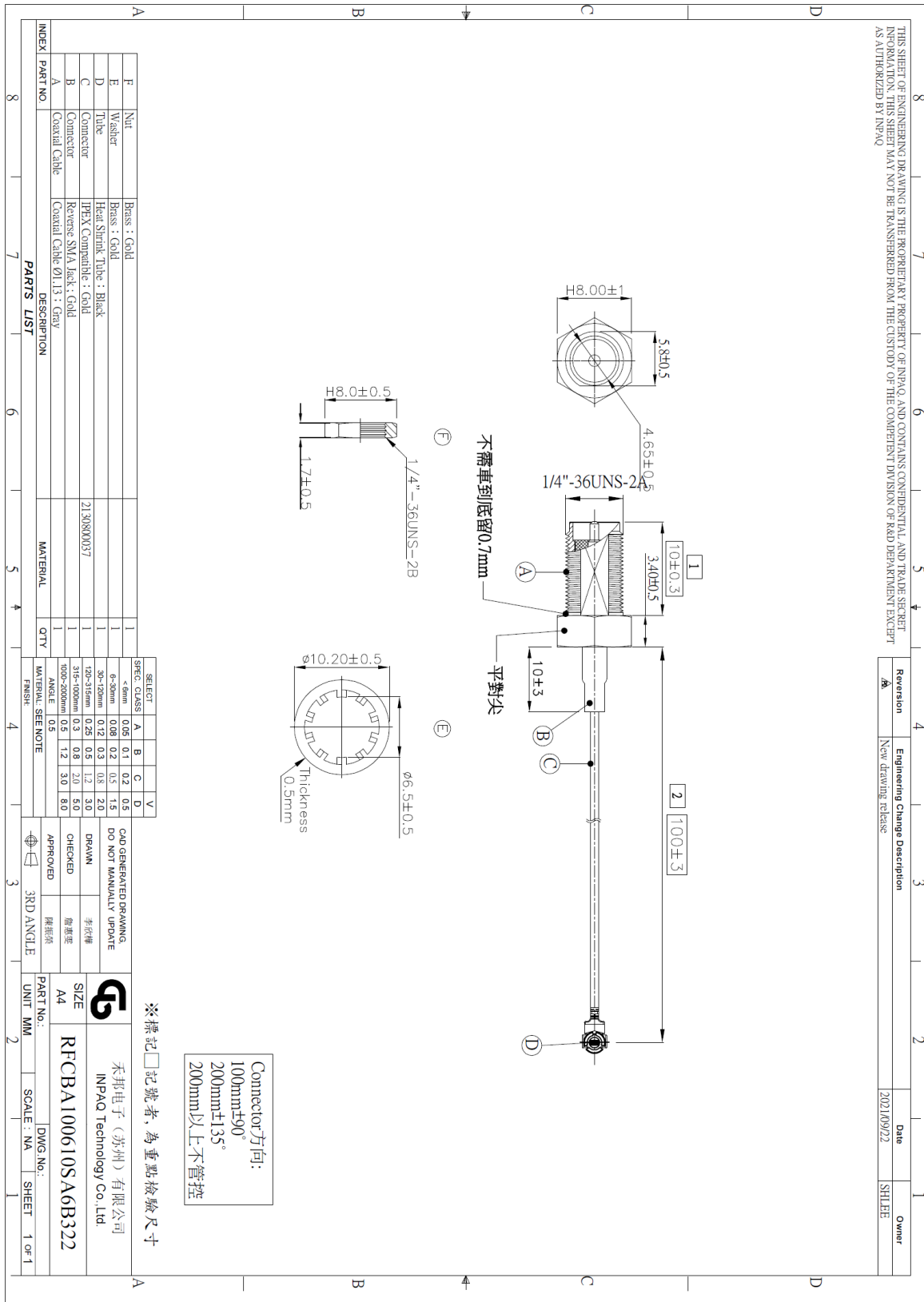
THIS DRAWINGS AND SPECIFICATIONS ARE THE PROPERTY OF INPAQ TECHNOLOGY CO.,LTD.AND SHALL NOT BE REPRODUCED OR USED AS THE BASIS FOR THE MANUFACTURE OR SALE OF APPARATUS OR DEVICES WITHOUT PERMISSION

TITLE : RFCBA100610SA6B322

DOCUMENT NO.

SPEC REV.
P0

3. Antenna Drawing :



Connector方向:
100mm±90°
200mm±135°
200mm以上不管控

※標記□記號者,為重點檢尺寸

UNLESS OTHER SPECIFIED TOLERANCES ON :		INPAQ TECHNOLOGY CO., LTD.
X=N/A	X.X=N/A X.XX=N/A	
ANGLES=N/A HOLEDIA=N/A		THIS DRAWINGS AND SPECIFICATIONS ARE THE PROPERTY OF INPAQ TECHNOLOGY CO.,LTD.AND SHALL NOT BE REPRODUCED OR USED AS THE BASIS FOR THE MANUFACTURE OR SALE OF APPARATUS OR DEVICES WITHOUT PERMISSION
SCALE : N/A	UNIT : mm	
DRAWN BY : 李欣樺	CHECKED BY : 詹惠愛	
DESIGNED BY : 林育帆	APPROVED BY : 陳振榮	DOCUMENT NO.
TITLE : RFCBA100610SA6B322		SPEC REV. P0