

# INSTRUCTIONS

**SPECIFICATIONS: 6 ft. (1.8 m) AWG 14/3 SJTW power cord.**  
**ELECTRICAL RATINGS: 15A/125V/1875W/60Hz.**

**Installation:**

- 1. Connect the two pieces of the yard stake together by screwing lower stake (C) into upper stake (B)
- 2. Attach the assembled stake to the body (A) by screwing the top of upper stake (B) into the base of body.
- Be sure to firmly tighten the stake to the body before installing into the ground.
- 3. Insert the stake 6inch into the ground.
- 4. Plugged into a GFCI protected receptacle.
- 5. Press the switch to the "I" position, Power ON to unit.

**Specifications**

- Frequency --- 433.99MHz
- Transmitter Power Input --- 3V Alkaline Battery (CR2032)
- Receiver Power input --- AC 125V Electrical Outlet
- Receiver Power Output --- 15 Amps / 125 Volts / 1875W

**Operating Instructions**

The 6-Outlet Remote Control Grounded Yard Stake may be operated via the included transmitter from up to 100 ft (30.48 M) away or manually press the button on the yard stake to select desired function.

**Control by Receiver:**

- 1. Press button to turn on all outlets On-Always On. The power indicator will be lighted.
- 2. Press button to Sensor (dusk-to-dawn), the indicator will be lighted, all outlets will be ON when sensing dusk and Off at dawn.
- 3. Press button to Sensor plus 2hr, 4hr, 6hr or 8hr, the indicators for the Sensor and specific hour you selected will be lighted. All outlets will be turn on when sensing dusk and then off after hour your selected.
- 4. Press button to Timer 8hr, 6hr, 4hr or 2hr, the indicators for the Timer and specific hour you selected will be lighted. All outlets are turn on immediately then off after hour you selected. The power will be repeated on daily.

**Control by Transmitter:**

- 1. Press the ON or OFF button to turn the receiver power ON or OFF.
- 2. Press Timer button plus 2Hr, 4Hr, 6Hr or 8Hr to turn on the receiver on then off after that specific hour you selected. The power will be repeated ON daily.
- 3. Press Sensor button (dusk-to-dawn), the receiver will be ON when sensing dusk and Off at dawn.
- 4. Press Sensor button plus 2Hr,4Hr,6Hr or 8Hr to turn on the receiver after sensing dusk then off after specific hour you selected.

**NOTES:**

- \* In the Sensor (dusk-to dawn) mode, temporary light sources like headlights, porch lights and other external light sources will not interfere with the photocell function unless the external light source irradiate it more than 15 minutes. In that case, the timer will shut off until darkness is restored.
- \* Once programming activities at Sensor with the specific hour mode,the program cycle will complete before the timer resets. Headlights, porch lights, street lamps and other external lighting sources will not interfere with the active timer program.
- \* When set to "ON", the yard stake will provide continual power to outlets until the button is switched to "OFF" or to any of the other operating modes.

**Overload Protection**

The unit has a reset function for overload protection. If the power turns off unexpectedly, please unplug all devices, press the power switch (resets device) and reconnect devices.

**Remote Control Unit**

- RF (Radio Frequency) transmitter is powered by one 12V alkaline battery.
- Red indicator light, labeled 1 on transmitter illustration, lights when transmitting.
- Remote operates the receiver.
- Replace the battery when the red indicator light does not light when a button is pressed.

**Safety Information**

**WARNING:** Disregarding Cautions may cause damage, fire, or fatal shock. When using outdoor electrical products, basic safety precautions should always be followed to reduce the risk of fire, electric shock, and personal injury.

**CAUTION:**

- Risk of Fire. Not for permanent installation. Use only with outdoor equipment, Christmas-tree, or other seasonal decorative-lighting products having a total of 15 Ampere maximum. Do not install or use this product for more than a 90-day period.
- If using Christmas tree or decorative-lighting products that are not marked with an ampere rating, connect no more than 140 screw-base lamps (C7 or C9) or 12 strings with midget (push-in) lamps to this cord set.
- Cord sets must be plugged into a GFCI-protected receptacle.
- If using an outdoor-use cord set for an extended period of time (greater than 90 days) please consider hard wiring a permanent outdoor-use receptacle rated for year-round use in the area that power is needed. Please contact a licensed electrician for proper installation of permanent wiring.
- After completion of installation, the connector shall be maintained a minimum of 6 inches above ground

**Federal Communication Commission Interference Statement**

This equipment has been tested and found to comply with the limits for Class B digital device, pursuant to part 15 of the FCC Rules. These limits are designed to provide reasonable protection against harmful interference in a residential installation. This equipment generates, uses and can radiate radio frequency energy and, if not installed and used in accordance with the instructions, may cause harmful interference to radio or television reception, which can be determined by turning the equipment off and on, the user is encouraged to try to correct the interference by one or more of the following measures:

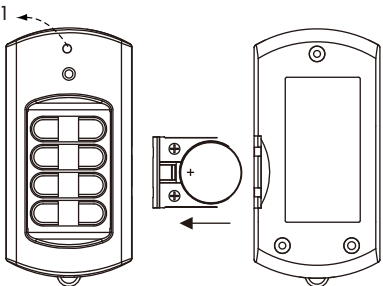
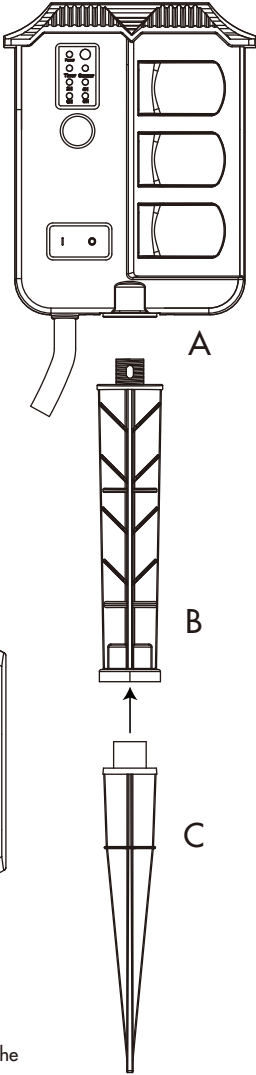
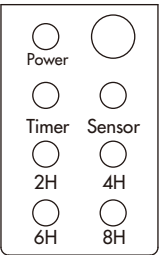
- Reorient or relocate the receiving antenna.
- Increase the separation between the equipment and the receiver.
- Connect the equipment into an outlet on a circuit different from that to which the receiver is connected.
- Consult the dealer or an experienced radio/TV technician for help.

This device complies with Part 15 of the FCC Rules. Operation is subject to the following two conditions: (1) This device may not cause harmful interference, and (2) this device must accept any interference received, including interference that may cause undesired operation.

**FCC Caution:**

The Grantee is not responsible for any changes or modifications not expressly approved by the party responsible for compliance. such modifications could void the user's authority to operate the equipment.

**⚠WARNING:** Cancer and Reproductive Harm - [www.P65Warnings.ca.gov](http://www.P65Warnings.ca.gov)



RECEIVER MODEL: SP-058A  
TRANSMITTER MODEL: TR-033-8  
FCC ID: PAGTR-033-8  
IC: 4494A-TR0338

**Battery Replacement**

- Remove the Battery compartment cover from the back of the remote control by sliding the cover off, as shown.
- Remove the spent battery and place a new Type CR2032 battery into the Battery Compartment correctly observing the polarity indications (+/-) inside the Battery Compartment.
- Replace the Battery Compartment Cover.
- Clear the battery contacts and also those of the device prior to battery installation

**Battery Handling and Usage**

**WARNING:** Keep batteries away from children and pets.

- Follow the battery manufacturer's safety and usage instructions.
- Insert the battery observing the proper polarity (+/-) as indicated inside the battery compartment.

**CAUTION:** Failure to properly align the battery polarity can cause personal injury and / or property damage.

- Remove a spent or discharged battery from the product. Remove the battery when not using the product for an extended period.
- Never throw batteries into a fire. Do not expose batteries to fire or other heat sources.
- Dispose or recycle spent/discharged batteries in compliance with all applicable laws. For detailed information, contact your local solid waste authority.
- Battery contains mercury. Do not put in trash. Recycle or manage as hazardous waste.

**Industry Canada statement:**

This device complies with Industry Canada license-exempt RSS standard(s). Operation is subject to the following two conditions: (1) this device may not cause interference, and (2) this device must accept any interference, including interference that may cause undesired operation of the device.

**Déclaration d'Industrie Canada :**

Le présent appareil est conforme aux CNR d'Industrie Canada applicables aux appareils radio exempts de licence. L'exploitation est autorisée aux deux conditions suivantes : (1) l'appareil ne doit pas produire de brouillage, et (2) l'utilisateur de l'appareil doit accepter tout brouillage radioélectrique subi, même si le brouillage est susceptible d'en compromettre le fonctionnement.

**Trouble Shooting**

- The receiver doesn't turn on- Make sure the AC power cord is securely plugged into an AC power outlet. Unplug the unit for a moment and then plug it in again. Check the outlet by plugging in another device.
- The remote doesn't work- Make sure the battery is fresh. Stand closer to the receiver. The range should be up to 100 ft. (30.48 m) though doors, walls and electrical wires may reduce the remote distance.
- In case of overloading, your unit is equipped with a circuit breaker, which will shut off all power. Eliminate overload and then push-to reset circuit breaker for overload protection.

Unique Identifier :  
KAB Model No. : SP-058A/TR-033-8  
Responsible Party - U.S. Contact Information  
Company Name :  
Customer Address :  
Tel/Internet Contact :

Made in China  
**SAVE THESE INSTRUCTIONS!**