

TEST REPORT

Reference No...... : WTD19S04026085W
FCC ID..... : PAGTR-032
Applicant..... : KAB Enterprise Co., Ltd.
Address..... : 21F, -1, No.33, Sec. 1, Minsheng Rd., Banqiao Dist., New Taipei City
220, Taiwan
Manufacturer..... : Verdant Electronics(Dong Guan) Co., Ltd.
Address..... : Langxie Administrative District, Qiaotou, Dongguan City, Guang Dong
Sheng, China
Product..... : Remote Controller
Model(s)..... : TR-032
Standards..... : FCC CFR47 Part 15 Section 15.231:2019
Date of Receipt sample.... : 2019-04-26
Date of Test..... : 2019-04-27 to 2019-05-15
Date of Issue..... : 2019-05-16
Test Result..... : **Pass**

Remarks:

The results shown in this test report refer only to the sample(s) tested, this test report cannot be reproduced, except in full, without prior written permission of the company. The report would be invalid without specific stamp of test institute and the signatures of compiler and approver.

Prepared By:

Waltek Services (Shenzhen) Co., Ltd.

Address: 1/F., Fukangtai Building, West Baima Road, Songgang Street, Baoan District, Shenzhen, Guangdong, China

Test Site/Test Location:

Waltek Services (Shenzhen) Co., Ltd.

Address: 1/F., Fukangtai Building, West Baima Road, Songgang Street, Baoan District, Shenzhen, Guangdong, China

Tel :+86-755-83551033

Fax:+86-755-83552400

Compiled by:

Robin Zhou

Robin Zhou /Test Engineer

Approved by:

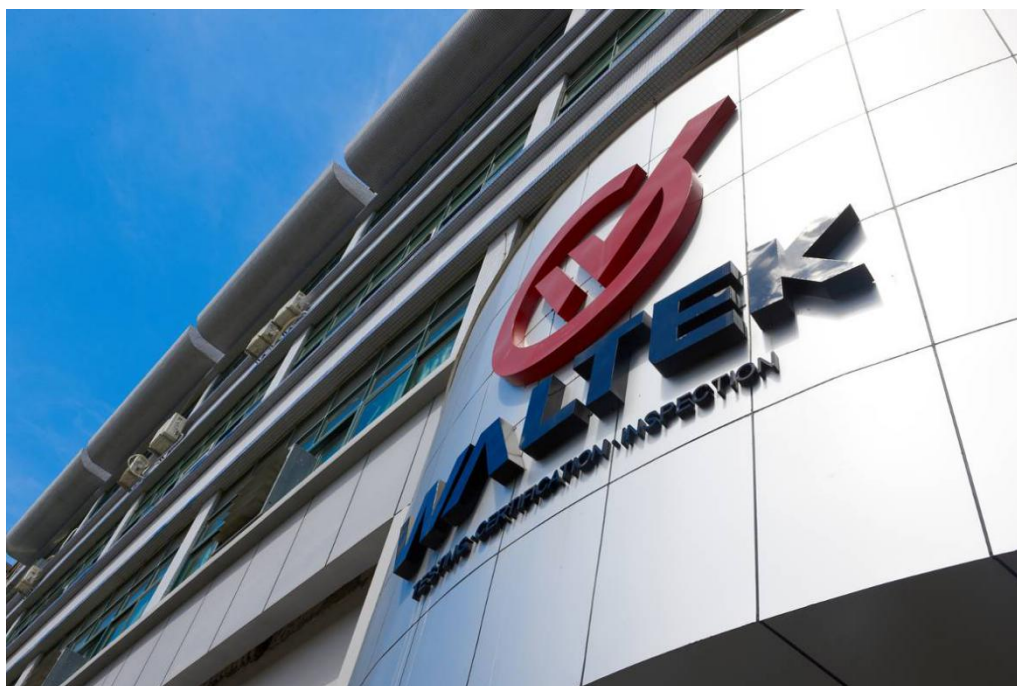


Philo Zhong

Philo Zhong / Manager

1 Laboratories Introduction

Waltek Services (Shenzhen) Co., Ltd is a professional third-party testing and certification laboratory with multi-year product testing and certification experience, established strictly in accordance with ISO/IEC 17025 requirements, and accredited by ILAC (International Laboratory Accreditation Cooperation) member. A2LA (American Association for Laboratory Accreditation, the certification number is 4243.01) of USA, CNAS (China National Accreditation Service for Conformity Assessment, the registration number is L3110) of China. Meanwhile, Waltek has got recognition as registration and accreditation laboratory from EMSD (Electrical and Mechanical Services Department), and American Energy star, FCC(The Federal Communications Commission), CEC(California energy efficiency), ISED (Innovation, Science and Economic Development Canada). It's the strategic partner and data recognition laboratory of international authoritative organizations, such as Intertek(ETL-SEMKO), TÜV Rheinland, TÜV SÜD, etc.



Waltek Services (Shenzhen) Co., Ltd is one of the largest and the most comprehensive third party testing laboratory in China. Our test capability covered four large fields: safety test. ElectroMagnetic Compatibility(EMC), and energy performance, wireless radio. As a professional, comprehensive, justice international test organization, we still keep the scientific and rigorous work attitude to help each client satisfy the international standards and assist their product enter into globe market smoothly.

1.1 Test Facility

A. Accreditations for Conformity Assessment (International)

Country/Region	Scope Covered By	Scope	Note
USA	ISO/IEC 17025	FCC ID \ DOC \ VOC	1
Canada		IC ID \ VOC	2
Japan		MIC-T \ MIC-R	-
Europe		EMCD \ RED	-
Taiwan		NCC	-
Hong Kong		OFCA	-
Australia		RCM	-
India		WPC	-
Thailand		NTC	-
Singapore		IDA	-
Note: 1. FCC Designation No.: CN1201. Test Firm Registration No.: 523476. 2. ISED CAB identifier: CN0013			

B.TCBs and Notify Bodies Recognized Testing Laboratory.

Recognized Testing Laboratory of ...	Notify body number
TUV Rheinland	Optional.
Intertek	
TUV SUD	
SGS	
Phoenix Testlab GmbH	0700
Element Materials Technology Warwick Ltd.	0891
Timco Engineering, Inc.	1177
Eurofins Product Service GmbH	0681

2 Contents

	Page
1 LABORATORIES INTRODUCTION	2
1.1 TEST FACILITY	3
2 CONTENTS	4
3 REVISION HISTORY	5
4 GENERAL INFORMATION	6
4.1 GENERAL DESCRIPTION OF E.U.T.	6
4.2 DETAILS OF E.U.T.	6
4.3 TEST MODE	6
5 EQUIPMENT USED DURING TEST	7
5.1 EQUIPMENTS LIST	7
5.2 MEASUREMENT UNCERTAINTY	8
5.3 SUBCONTRACTED	8
6 TEST SUMMARY	9
7 RADIATED SPURIOUS EMISSIONS	10
7.1 EUT OPERATION	10
7.2 TEST SETUP	11
7.3 SPECTRUM ANALYZER SETUP	12
7.4 TEST PROCEDURE	13
7.5 SUMMARY OF TEST RESULTS	14
8 PERIODIC OPERATION	15
9 EMISSION BANDWIDTH	19
9.1 TEST PROCEDURE	19
9.2 TEST RESULT	19
10 ANTENNA REQUIREMENT	20
11 PHOTOGRAPHS – MODEL TR-032 TEST SETUP PHOTOS	21
12 PHOTOGRAPHS - CONSTRUCTIONAL DETAILS	23
12.1 MODEL TR-032 - EXTERNAL PHOTOS	23
12.2 MODEL TR-032 - INTERNAL PHOTOS	26

3 Revision History

Test report No.	Date of Receipt sample	Date of Test	Date of Issue	Purpose	Comment	Approved
WTD19S04026085W	2019-04-26	2019-04-27 to 2019-05-15	2019-05-16	original	-	Valid

4 General Information

4.1 General Description of E.U.T.

Product:	Remote Controller
Model(s):	TR-032
Model Difference:	N/A
Type of Modulation:	PCM
Frequency Range:	433.92MHz
Antenna installation:	Internal Integrated Antenna
Antenna Gain:	0dBi

4.2 Details of E.U.T.

Ratings:	DC 12V by ALKALINE BATTERY(Size "23A")
----------	---

4.3 Test Mode

All test mode(s) and condition(s) mentioned were considered and evaluated respectively by performing full tests, the worst data were recorded and reported.

Test mode	Test channel
Transmitting	433.92MHz

5 Equipment Used during Test

5.1 Equipments List

3m Semi-anechoic Chamber for Radiation Emissions						
Item	Equipment	Manufacturer	Model No.	Serial No.	Last Calibration Date	Calibration Due Date
1	Spectrum Analyzer	R&S	FSP30	100091	2019-04-07	2020-04-06
2	Broad-band Horn Antenna(1-18GHz)	SCHWARZBECK	BBHA 9120 D	667	2018-05-18	2019-05-17
3	Broadband Preamplifier	COMPLIANCE DIRECTION	PAP-1G18	2004	2019-04-07	2020-04-06
4	Coaxial Cable (above 1GHz)	Top	1GHz-18GHz	EW02014-7	2019-04-07	2020-04-06
5	Spectrum Analyzer	R&S	FSP40	100501	2018-10-20	2019-10-19
6	Broad-band Horn Antenna(18-40GHz)	SCHWARZBECK	BBHA 9170	BBHA917065 1	2018-10-25	2019-10-24
7	Microwave Broadband Preamplifier (18-40GHz)	SCHWARZBECK	BBV 9721	100472	2018-10-25	2019-10-24
8	Cable	Top	18-40GHz	-	2018-10-25	2019-10-24
3m Semi-anechoic Chamber for Radiation Emissions						
Item	Equipment	Manufacturer	Model No.	Serial No	Last Calibration Date	Calibration Due Date
1	Test Receiver	R&S	ESCI	101296	2019-04-07	2020-04-06
2	Trilog Broadband Antenna	SCHWARZBECK	VULB9160	9160-3325	2019-04-07	2020-04-06
3	Active Loop Antenna	Beijing Dazhi	ZN30900A	-	2019-04-07	2020-04-06
4	Amplifier	ANRITSU	MH648A	M43381	2019-04-07	2020-04-06
5	Cable	HUBER+SUHNER	CBL2	525178	2019-04-07	2020-04-06
6	Coaxial Cable (below 1GHz)	Top	TYPE16 (13M)	-	2018-09-12	2019-09-11

RF Conducted Testing						
Item	Equipment	Manufacturer	Model No.	Serial No.	Last Calibration Date	Calibration Due Date
1.	Spectrum Analyzer	R&S	FSP30	100091	2019-04-07	2020-04-06
2	Coaxial Cable	Top	10Hz-30GHz	-	2018-09-12	2019-09-11
3	Antenna Connector*	Realacc	45RSm	-	2018-09-12	2019-09-11
4	DC Block	Gwave	GDCB-3G-N-SMA	140307001	2018-09-12	2019-09-11

“*”: The temporary antenna connector is soldered on the PCB board in order to perform conducted tests and this temporary antenna connector is listed in the equipment list.

5.2 Measurement Uncertainty

Parameter	Uncertainty
Radio Frequency	$\pm 1 \times 10^{-6}$
RF Power	± 1.0 dB
RF Power Density	± 2.2 dB
Radiated Spurious Emissions test	± 5.03 dB (30M~1000MHz)
	± 5.47 dB (1000M~25000MHz)
Confidence interval: 95%. Confidence factor:k=2	

5.3 Subcontracted

Whether parts of tests for the product have been subcontracted to other labs:

Yes No

If Yes, list the related test items and lab information:

Test Lab: N/A

Lab address: N/A

Test items: N/A

6 Test Summary

Test Items	Test Requirement	Result
Conducted Emissions	15.207	N/A*
Radiated Spurious Emissions	15.205(a) 15.209 15.231(a)	Pass
Periodic Operation	15.231(a)	Pass
Emission Bandwidth	15.231(c)	Pass
Antenna Requirement	15.203	Pass
Note: Pass=Compliance; NC=Not Compliance; NT=Not Tested; N/A=Not Applicable *: The EUT is only powered by battery, no need to evaluate AC Power Conducted Emission.		

7 Radiated Spurious Emissions

Test Requirement: FCC Part15 Paragraph 15.231(a), 15.209, 15.205

Test Method: ANSI C63.10:2013

Test Result: PASS

Measurement Distance: 3m

Limit:

Fundamental Frequency (MHz)	Field Strength of Fundamental (uV/m)	Field Strength of Fundamental (dBuV/m)	Field Strength of Spurious Emission (uV/m)	Field Strength of Spurious Emission (dBuV/m)
44.66-40.70	2250	67	225	47
70-130	1250	62	125	42
130-174	1250 to 3750*	62 to 71.48*	125 to 375*	42 to 51.48*
174-260	3750	71.48	375	51.48
260-470	3750 to 12500*	71.48 to 81.94*	375 to 1250*	51.48 to 61.94*
Above 470	12500	81.94	1250	61.94
* linear interpolations				

7.1 EUT Operation

Operating Environment :

Temperature: 23.1 °C

Humidity: 54.8 % RH

Atmospheric Pressure: 101.9kPa

Test Voltage: DC 12V by Battery

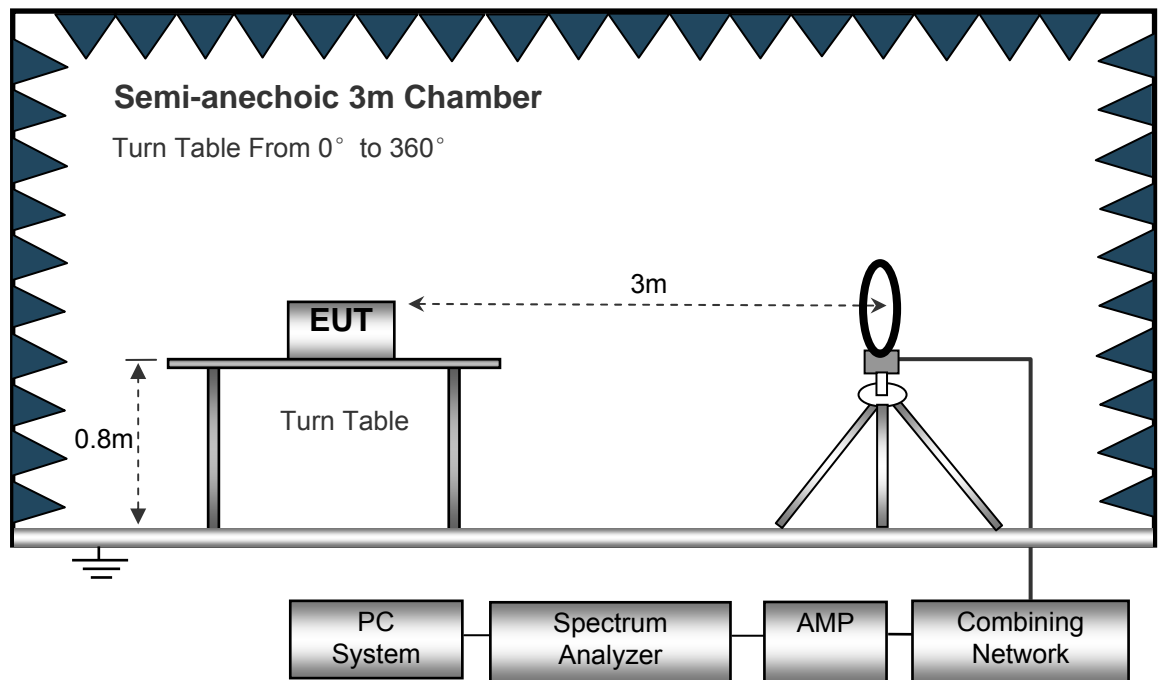
EUT Operation :

The test was performed in Transmitting mode, the test data were shown in the report.

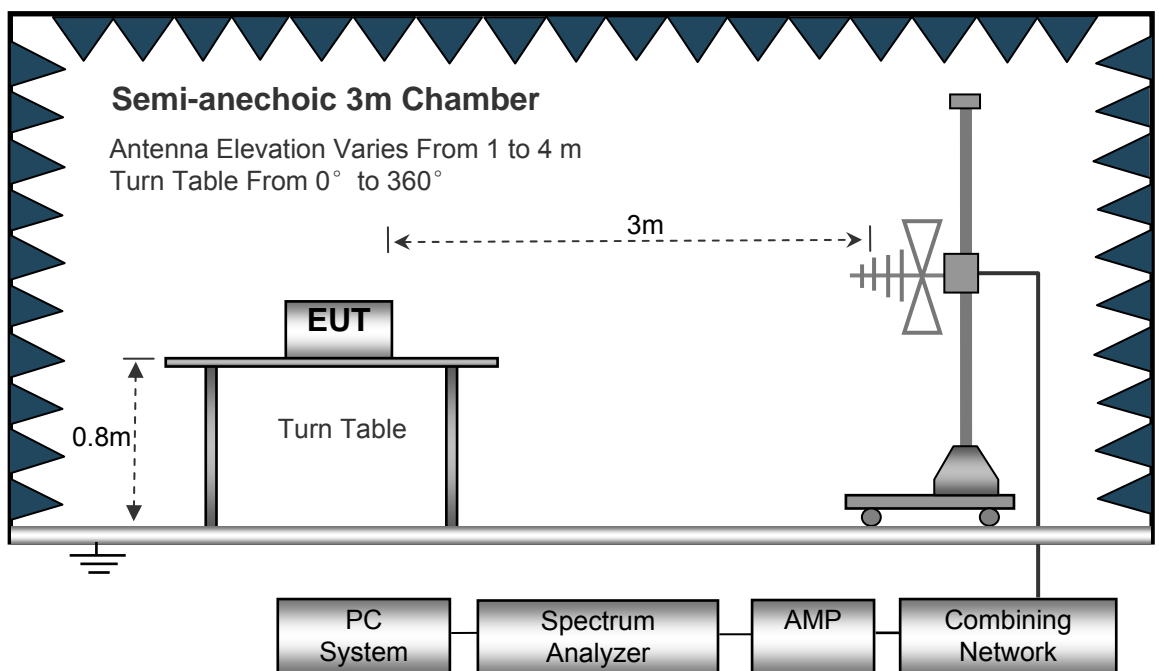
7.2 Test Setup

The radiated emission tests were performed in the 3m Semi- Anechoic Chamber test site, using the setup accordance with the ANSI C63.10:2013.

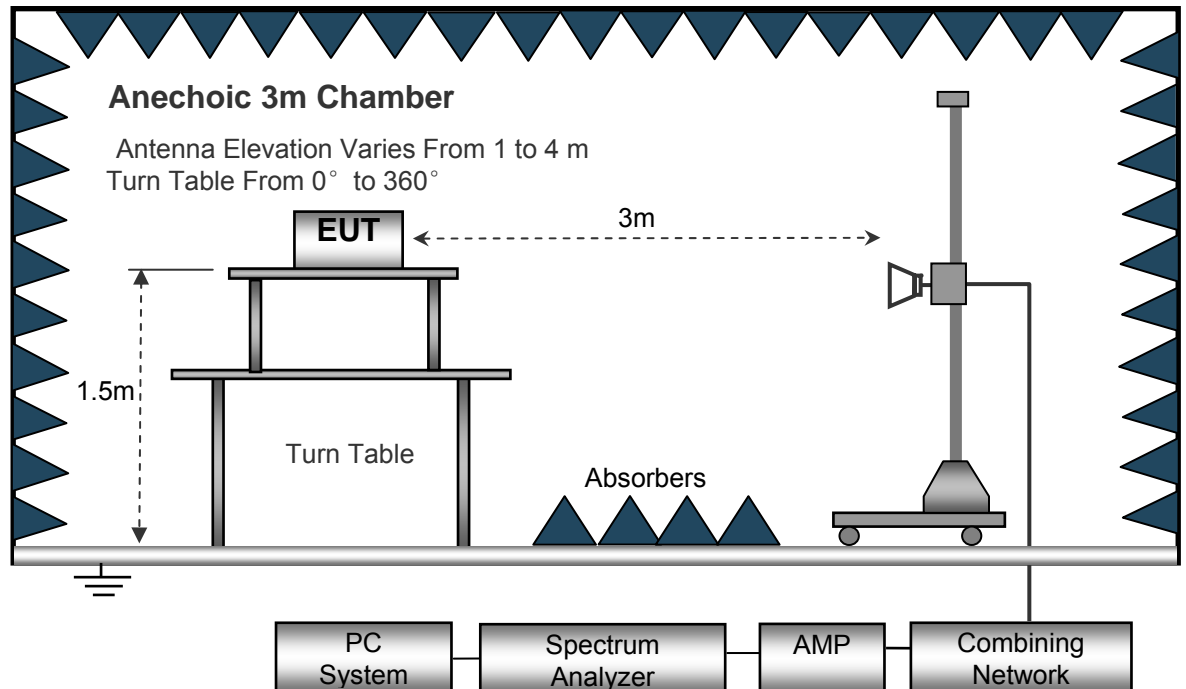
The test setup for emission measurement below 30MHz.



The test setup for emission measurement from 30 MHz to 1 GHz.



The test setup for emission measurement above 1 GHz.



7.3 Spectrum Analyzer Setup

Below 30MHz

Sweep Speed Auto
 IF Bandwidth..... 10kHz
 Video Bandwidth..... 10kHz
 Resolution Bandwidth..... 10kHz

30MHz ~ 1GHz

Sweep Speed Auto
 Detector PK
 Resolution Bandwidth..... 100kHz
 Video Bandwidth..... 300kHz

Above 1GHz

Sweep Speed Auto
 Detector PK
 Resolution Bandwidth..... 1MHz
 Video Bandwidth..... 3MHz

7.4 Test Procedure

1. The EUT is placed on a turntable. For below 1GHz, the EUT is 0.8m above ground plane; For above 1GHz, the EUT is 1.5m above ground plane.
2. The turntable shall be rotated for 360 degrees to determine the position of maximum emission level.
3. EUT is set 3m away from the receiving antenna, which is moved from 1m to 4m to find out the maximum emissions. The spectrum was investigated from the lowest radio frequency signal generated in the device, without going below 9 kHz, up to the tenth harmonic of the highest fundamental frequency or to 40 GHz, whichever is lower.
4. Maximum procedure was performed on the six highest emissions to ensure EUT compliance.
5. And also, each emission was to be maximized by changing the polarization of receiving antenna both horizontal and vertical.
6. Repeat above procedures until the measurements for all frequencies are complete.
7. The radiation measurements are tested under 3-axes(X, Y, Z) position(X denotes lying on the table, Y denotes side stand and Z denotes vertical stand), After pre-test, It was found that the worse radiation emission was get at the X position. So the data shown was the X position only.

7.5 Summary of Test Results

Test Frequency: 9 kHz~30 MHz

The measurements were more than 20 dB below the limit and not reported.

Test Frequency: 30 MHz ~ 5 GHz

Test Channel: 433.92MHz

Frequency (MHz)	Receiver Reading (PK) (dB μ V)	Turn table Angle Degree	RX Antenna		Corrected Factor (dB/m)	Corrected Amplitude (PK) (dB μ V/m)	FCC Part 15.231/15.209/205	
			Height (m)	Polar (H/V)			Limit (dB μ V/ m)	Margin (dB)
433.92	92.24	229	2.0	H	-10.53	81.71	100.83	-19.12
433.92	83.57	104	1.1	V	-10.53	73.04	100.83	-27.79
867.84	60.54	95	1.4	H	4.95	65.49	80.83	-15.34
867.84	50.25	110	1.6	V	4.95	55.20	80.83	-25.63
1300.03	75.02	238	1.3	H	-14.89	60.13	74.00	-13.87
1300.03	64.91	106	1.9	V	-14.89	50.02	74.00	-23.98
2420.04	70.18	227	1.1	H	-12.93	57.25	74.00	-16.75
2420.04	59.08	355	1.8	V	-12.93	46.15	74.00	-27.85

AV = Peak +20Log₁₀ (duty cycle) =PK+ (-13.96) [refer to section 8 for more detail]

Frequency (MHz)	PK (dB μ V/m)	RX Antenna Polar (H/V)	Duty cycle Factor (dB)	Calculated AV (dB μ V/m)	FCC Part 15.231/209/205	
					Limit (dB μ V/m)	Margin (dB)
433.92	81.71	H	-13.96	67.75	80.83	-13.08
433.92	73.04	V	-13.96	59.08	80.83	-21.75
867.84	65.49	H	-13.96	51.53	60.83	-9.30
867.84	55.20	V	-13.96	41.24	60.83	-19.59
1300.03	60.13	H	-13.96	46.17	54.00	-7.83
1300.03	50.02	V	-13.96	36.06	54.00	-17.94
2420.04	57.25	H	-13.96	43.29	54.00	-10.71
2420.04	46.15	V	-13.96	32.19	54.00	-21.81

8 Periodic Operation

The duty cycle was determined by the following equation:

To calculate the actual field intensity, The duty cycle correction factor in decibel is needed for later use and can be obtained from following conversion

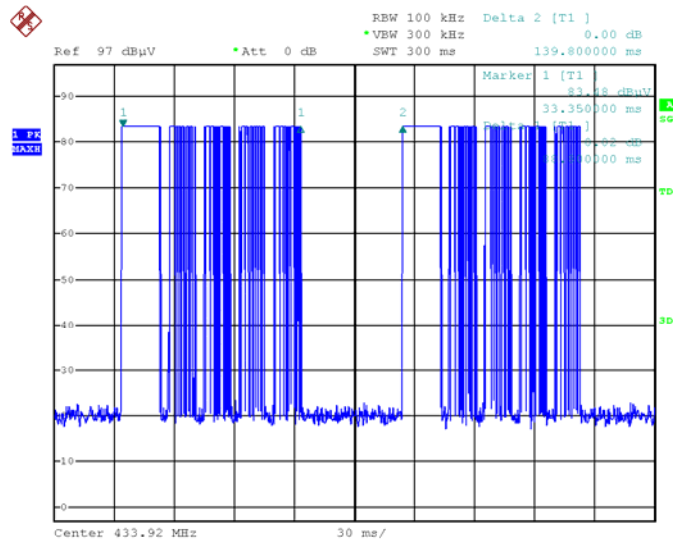
$$\text{Duty Cycle(\%)} = \text{Total On interval in a complete pulse train} / \text{Length of a complete pulse train} * \%$$

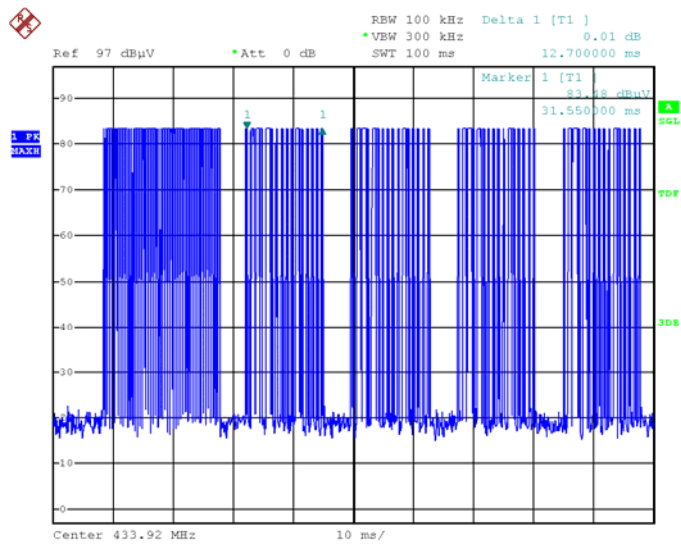
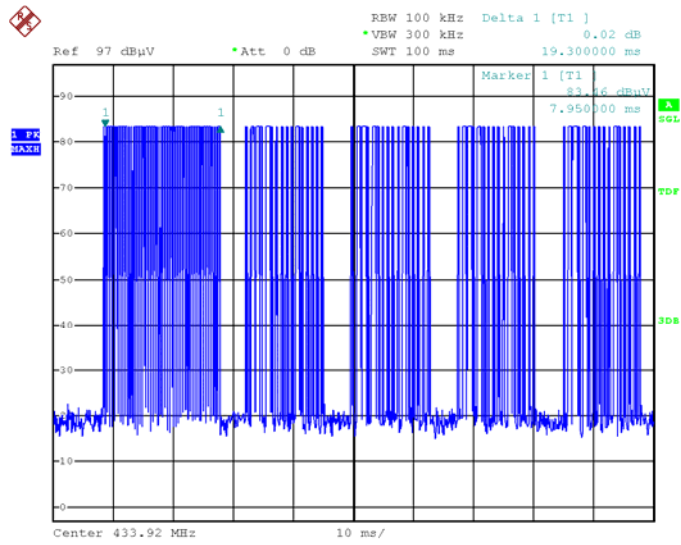
$$\text{Duty Cycle Correction Factor(dB)} = 20 * \text{Log}_{10}(\text{Duty Cycle(\%)})$$

Total transmission time(ms)	$0.12 * 47 + (0.12 * 12 + 0.54 * 4) * 4 = 20.04$
Length of a complete transmission period(ms)	100*
Duty Cycle(%)	20.04
Duty Cycle Correction Factor(dB)	-13.96

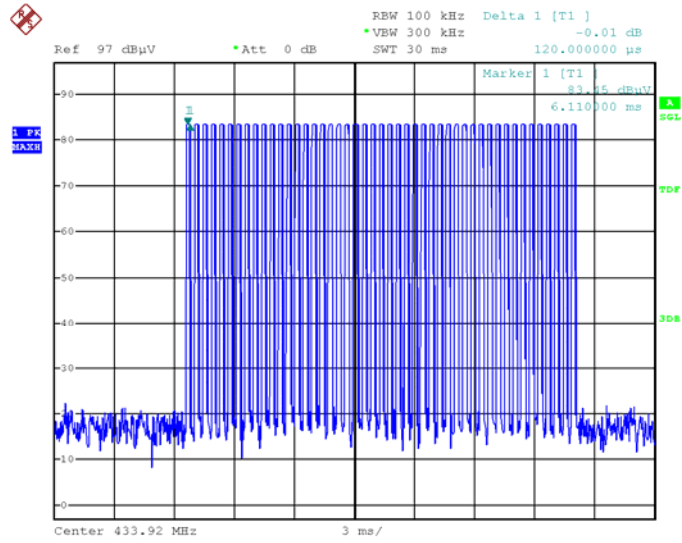
(* Note: the transmitter operates for longer than 0.1 seconds, the measured field strength shall be determined from the average absolute voltage during a 0.1 second interval during which the field strength is at its maximum value. So the Length of a complete transmission period=100ms)

Refer to the duty cycle plot (as below)

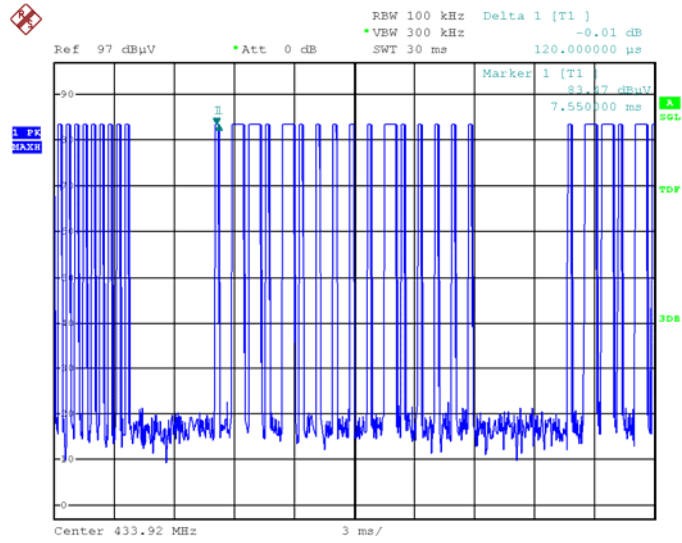


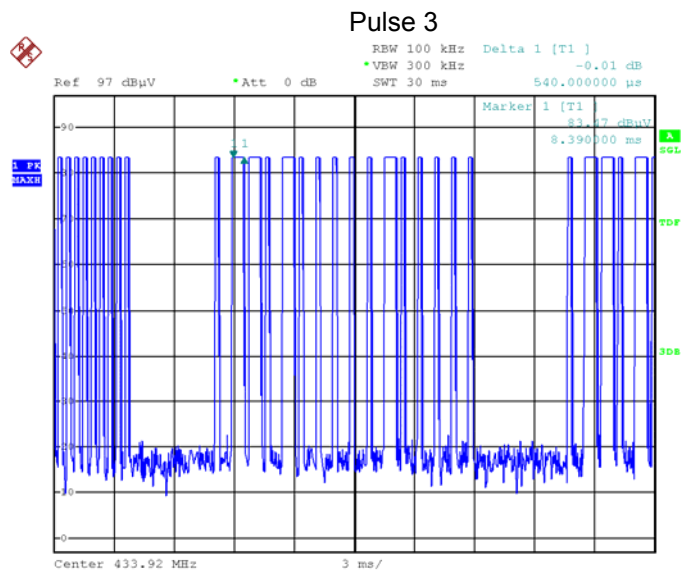


Pulse 1



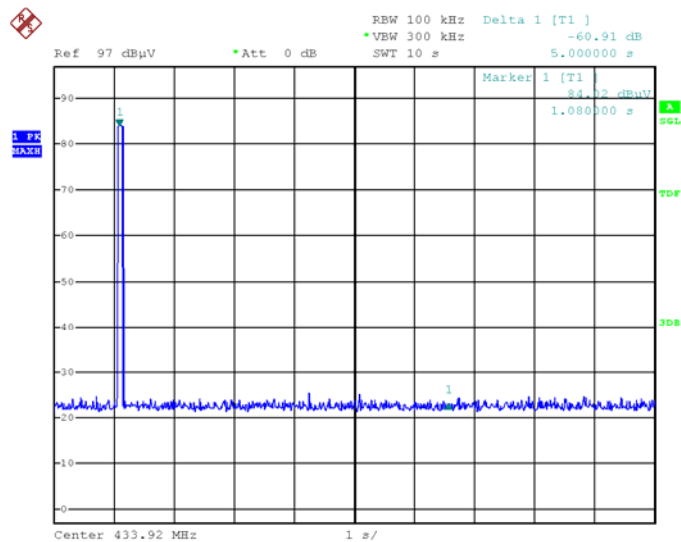
Pulse 2





FCC Part15.231 (a) (1) A manually operated transmitter shall employ a switch that will automatically deactivate the transmitter within not more than 5 seconds of being released.

(2)A transmitter activated automatically shall cease transmission within 5 seconds after activation.



9 Emission Bandwidth

Test Requirement: FCC Part15.231(c)
 Test Method: FCC Part15.231(c)
 Limit The bandwidth of the emission shall be no wider than 0.25% of the center frequency for devices operating above 70 MHz and below 900 MHz. For devices operating above 900 MHz, the emission shall be no wider than 0.5% of the center frequency.

9.1 Test Procedure

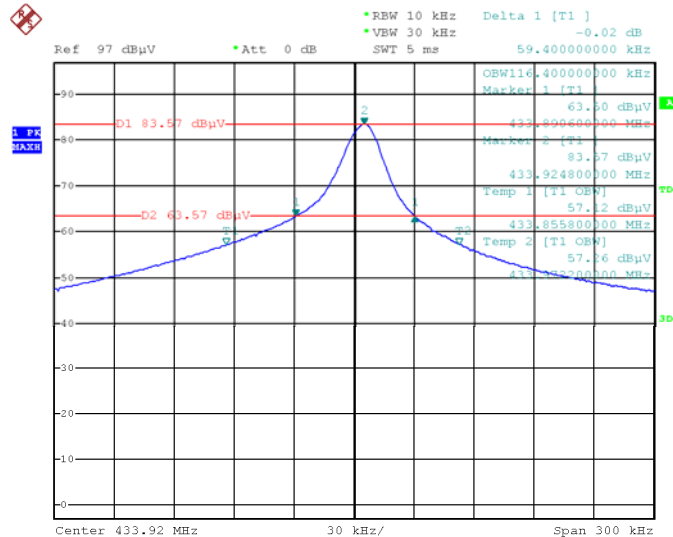
1. The transmitter output (antenna port) was connected to the spectrum analyzer.EUT and its simulators are placed on a table, let EUT working in test mode, then test it.
2. The bandwidth of the fundamental frequency was measure by spectrum analyser with 10 kHz RBW and 30 kHz VBW. The 20 dB bandwidth was recorded.

9.2 Test Result

Frequency (MHz)	20dB Bandwidth Emission(kHz)	99% Bandwidth Emission(kHz)	Limit (kHz)	Result
433.92	59.40	116.40	1084.80	Compliance

Limit=Center Frequency*0.25%

Test Plot



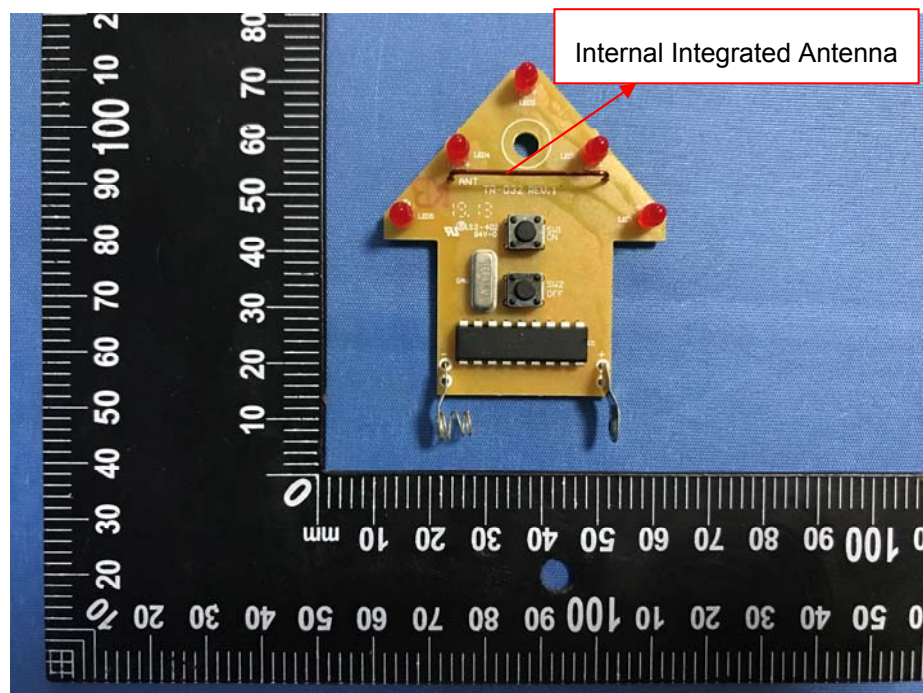
10 Antenna Requirement

An intentional radiator shall be designed to ensure that no antenna other than that furnished by the responsible party shall be used with the device. The use of a permanently attached antenna or of an antenna that uses a unique coupling to the intentional radiator shall be considered sufficient to comply with the provisions of this section. The manufacturer may design the unit so that a broken antenna can be replaced by the user, but the use of a standard antenna jack or electrical connector is prohibited. This requirement does not apply to carrier current devices or to devices operated under the provisions of §15.211, §15.213, §15.217, §15.219, or §15.221. Further, this requirement does not apply to intentional radiators that must be professionally installed, such as perimeter protection systems and some field disturbance sensors, or to other intentional radiators which, in accordance with §15.31(d), must be measured at the installation site. However, the installer shall be responsible for ensuring that the proper antenna is employed so that the limits in this part are not exceeded.

For intentional device, according to FCC 47 CFR Section 15.203, an intentional radiator shall be designed to ensure that no antenna other than that furnished by the responsible party shall be used with the device.

Result:

The EUT has one Internal Integrated Antenna, the gain is 0 dBi. meets the requirements of FCC 15.203.

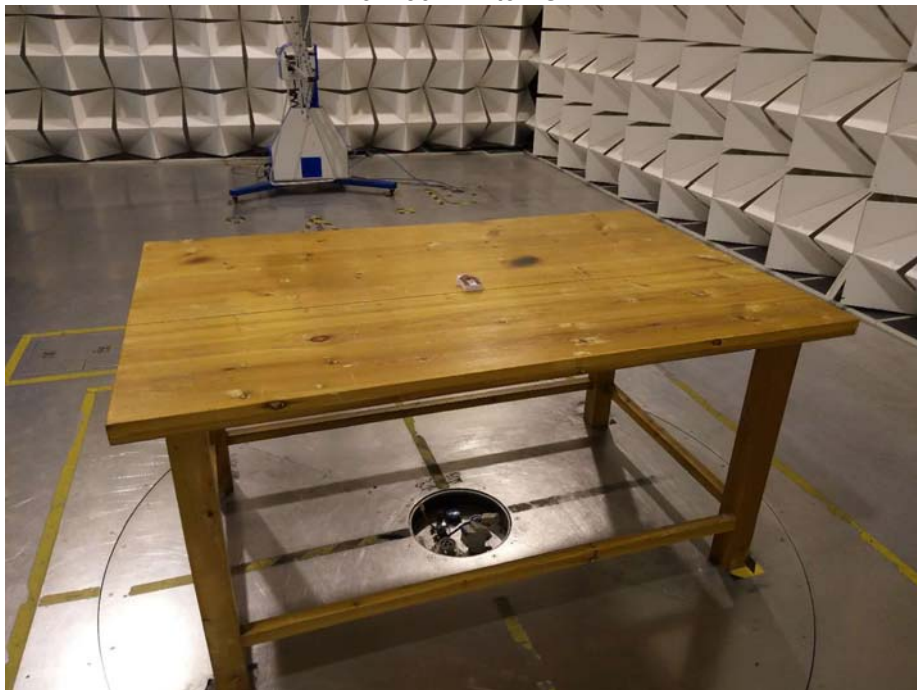


11 Photographs – Model TR-032 Test Setup Photos

Below 30MHz



From 30MHz to 1GHz



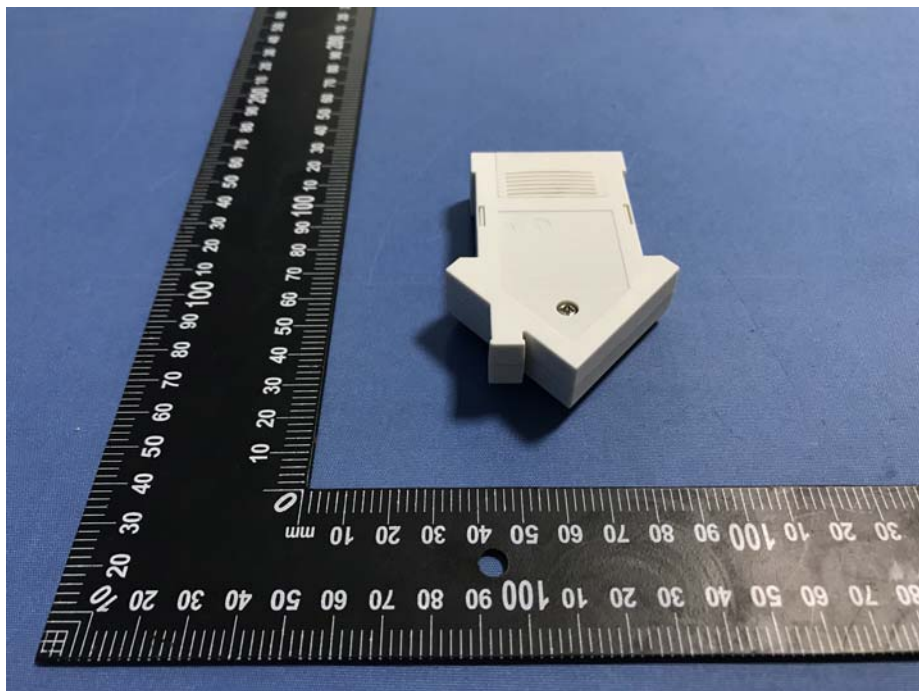
Above 1GHz

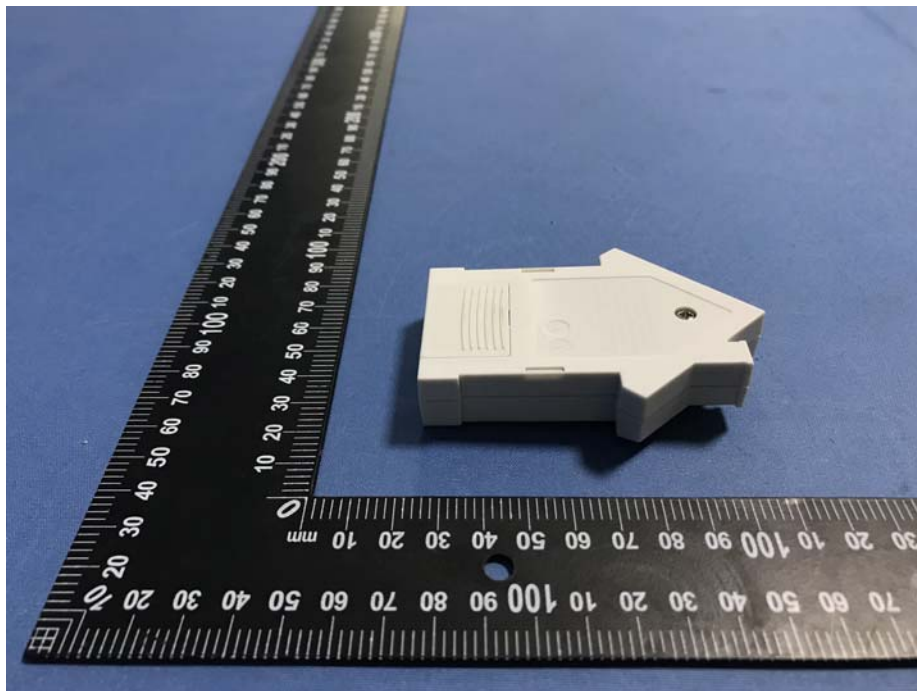


12 Photographs - Constructional Details

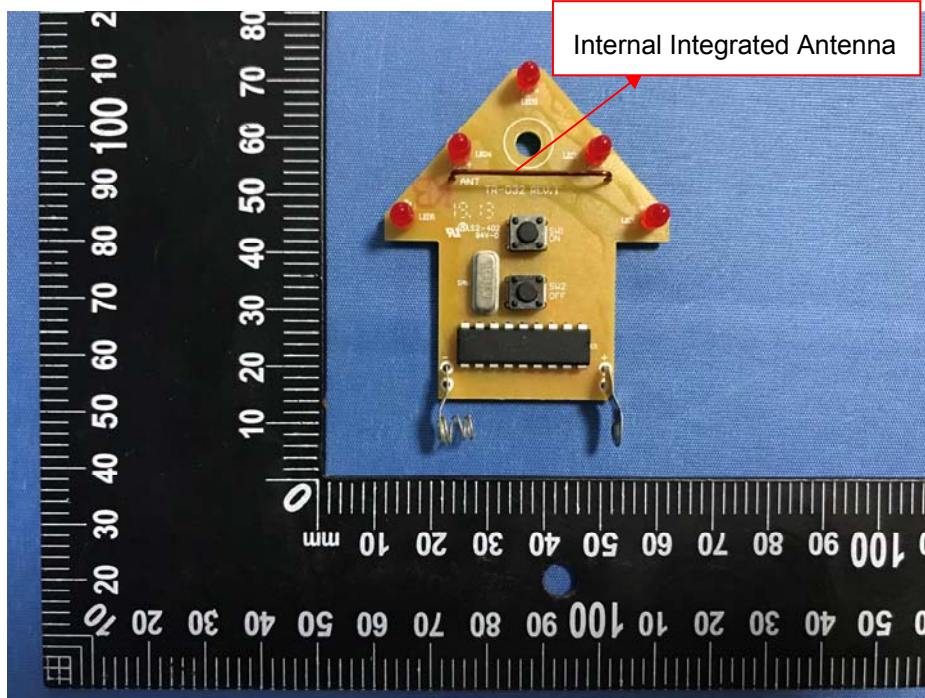
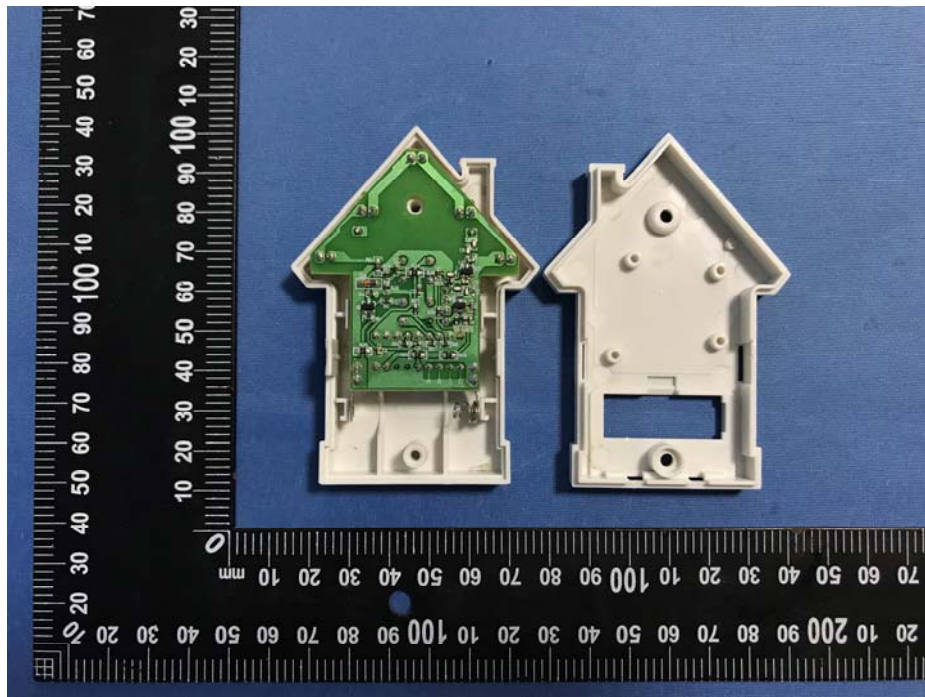
12.1 Model TR-032 - External Photos

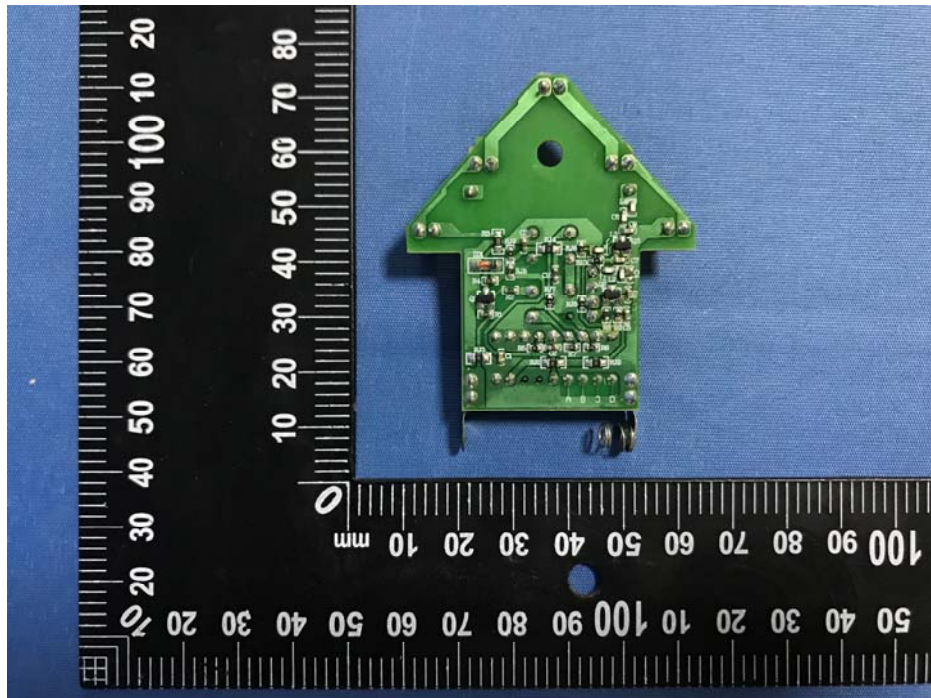
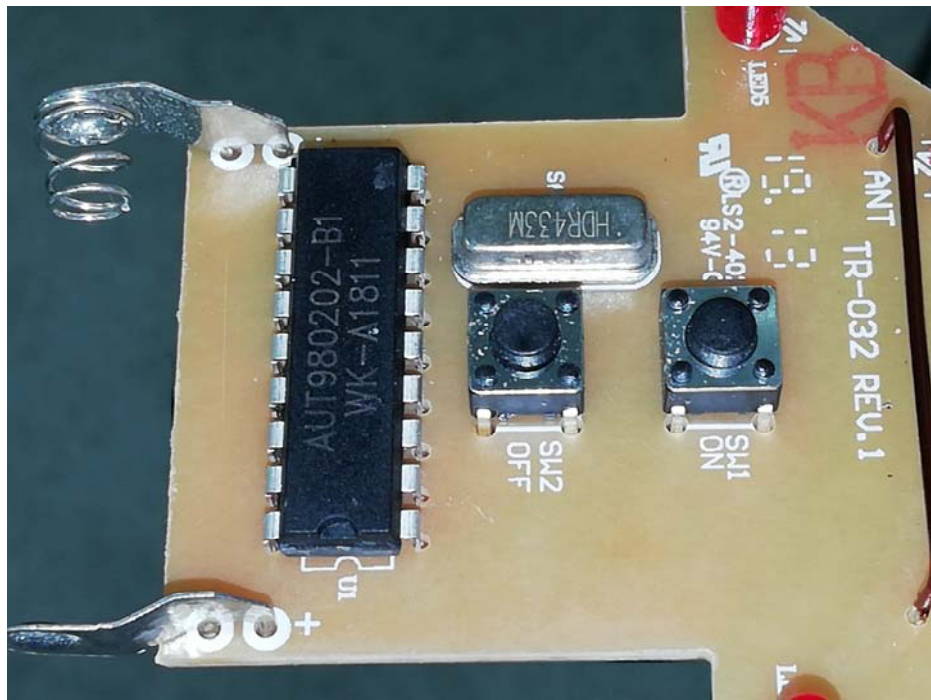


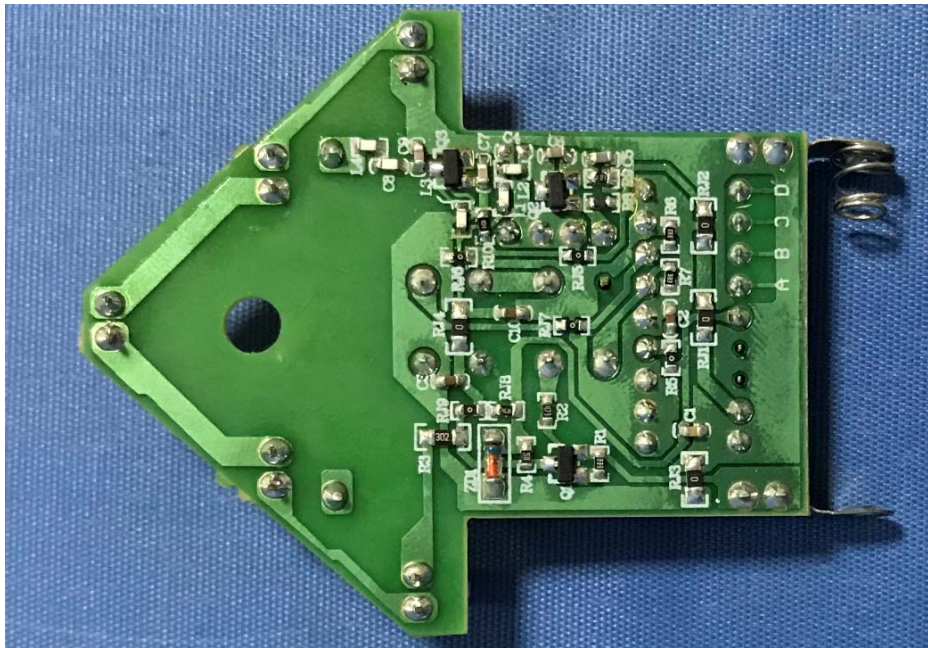




12.2 Model TR-032 - Internal Photos







====End of Report====