

# TEST REPORT

**Reference No.** ..... : WTD19S10071674W  
**FCC ID**..... : PAGTR-031-6S  
**Applicant**..... : KAB Enterprise Co., Ltd.  
**Address**..... : 21F, -1, No.33, Sec. 1, Minsheng Rd., Banqiao Dist.,  
New Taipei City 220, Taiwan  
**Manufacturer**..... : VERDANT ELECTRONICS (DONG GUAN) CO., LTD.  
**Address**..... : Langxia Administrative District, Qiaotou, Dongguan City,  
Guangdong, China  
**Product**..... : Remote Controller  
**Model(s)**..... : TR-031-6S  
**Standards**..... : FCC CFR47 Part 15 Section 15.231:2019  
**Date of Receipt sample**..... : 2019-10-17  
**Date of Test**..... : 2019-10-18 to 2019-10-29  
**Date of Issue**..... : 2019-10-31  
**Test Result**..... : **Pass**

Remarks:

The results shown in this test report refer only to the sample(s) tested, this test report cannot be reproduced, except in full, without prior written permission of the company. The report would be invalid without specific stamp of test institute and the signatures of compiler and approver.

**Prepared By:**

**Waltek Services (Shenzhen) Co., Ltd.**

Address: 1/F., Fukangtai Building, West Baima Road, Songgang Street, Baoan District, Shenzhen, Guangdong, China

**Test Site/Test Location:**

**Waltek Services (Shenzhen) Co., Ltd.**

Address: 1/F., Fukangtai Building, West Baima Road, Songgang Street, Baoan District, Shenzhen, Guangdong, China

Tel :+86-755-83551033

Fax:+86-755-83552400

Compiled by:

*Robin Zhou*

Robin Zhou /Test Engineer

Approved by:



*Philip Zhong*

Philip Zhong / Manager

# 1 Contents

	<b>Page</b>
<b>1 CONTENTS .....</b>	<b>2</b>
<b>2 REVISION HISTORY .....</b>	<b>3</b>
<b>3 GENERAL INFORMATION.....</b>	<b>4</b>
3.1 GENERAL DESCRIPTION OF E.U.T.....	4
3.2 DETAILS OF E.U.T. ....	4
3.3 TEST MODE .....	4
<b>4 EQUIPMENT USED DURING TEST .....</b>	<b>5</b>
4.1 EQUIPMENTS LIST .....	5
4.2 MEASUREMENT UNCERTAINTY .....	6
4.3 SUBCONTRACTED .....	6
<b>5 TEST SUMMARY .....</b>	<b>7</b>
<b>6 RADIATED SPURIOUS EMISSIONS.....</b>	<b>8</b>
6.1 EUT OPERATION .....	8
6.2 TEST SETUP .....	9
6.3 SPECTRUM ANALYZER SETUP.....	10
6.4 TEST PROCEDURE .....	11
6.5 SUMMARY OF TEST RESULTS .....	12
<b>7 PERIODIC OPERATION .....</b>	<b>13</b>
<b>8 EMISSION BANDWIDTH .....</b>	<b>18</b>
8.1 TEST PROCEDURE .....	18
8.2 TEST RESULT .....	18
<b>9 ANTENNA REQUIREMENT .....</b>	<b>19</b>
<b>10 PHOTOGRAPHS – MODEL TR-031-6S TEST SETUP PHOTOS .....</b>	<b>20</b>
10.1 PHOTOGRAPH – RADIATED SPURIOUS EMISSIONS TEST SETUP PHOTOS .....	20
<b>11 PHOTOGRAPHS - CONSTRUCTIONAL DETAILS .....</b>	<b>22</b>
11.1 MODEL TR-031-6S - EXTERNAL PHOTOS .....	22
11.2 MODEL TR-031-6S - INTERNAL PHOTOS.....	26

## 2 Revision History

Test report No.	Date of Receipt sample	Date of Test	Date of Issue	Purpose	Comment	Approved
WTD19S10071674W	2019-10-17	2019-10-18 to 2019-10-29	2019-10-31	original	-	Valid

### 3 General Information

#### 3.1 General Description of E.U.T.

Product:	Remote Controller
Model(s):	TR-031-6S
Model Difference:	N/A
Type of Modulation:	PCM
Frequency Range:	433.99MHz
Antenna installation:	PCB Printed Antenna
Antenna Gain:	0dBi

#### 3.2 Details of E.U.T.

Ratings:	DC 3V by CR2032 battery
----------	-------------------------

#### 3.3 Test Mode

All test mode(s) and condition(s) mentioned were considered and evaluated respectively by performing full tests, the worst data were recorded and reported.

Test mode	Test channel
Transmitting	433.99MHz

## 4 Equipment Used during Test

### 4.1 Equipments List

3m Semi-anechoic Chamber for Radiation Emissions						
Item	Equipment	Manufacturer	Model No.	Serial No.	Last Calibration Date	Calibration Due Date
1	Spectrum Analyzer	R&S	FSP30	100091	2019-04-19	2020-04-18
2	Broad-band Horn Antenna(1-18GHz)	SCHWARZBECK	BBHA 9120 D	667	2019-04-19	2020-04-18
3	Broadband Preamplifier	COMPLIANCE DIRECTION	PAP-1G18	2004	2019-04-19	2020-04-18
4	Coaxial Cable (above 1GHz)	Top	1GHz-18GHz	EW02014-7	2019-04-19	2020-04-18
5	Spectrum Analyzer	R&S	FSP40	100501	2018-11-13	2019-11-12
6	Broad-band Horn Antenna(18-40GHz)	SCHWARZBECK	BBHA 9170	BBHA917065 1	2019-09-17	2020-09-16
7	Microwave Broadband Preamplifier (18-40GHz)	SCHWARZBECK	BBV 9721	100472	2019-09-17	2020-09-16
8	Cable	Top	18-40GHz	-	2019-09-17	2020-09-16
3m Semi-anechoic Chamber for Radiation Emissions						
Item	Equipment	Manufacturer	Model No.	Serial No	Last Calibration Date	Calibration Due Date
1	Test Receiver	R&S	ESCI	101296	2019-04-20	2020-04-19
2	Trilog Broadband Antenna	SCHWARZBECK	VULB9160	9160-3325	2019-05-24	2020-05-23
3	Active Loop Antenna	Com-Power Corp.	AL-130R	10160007	2019-04-28	2020-04-27
4	Amplifier	ANRITSU	MH648A	M43381	2019-04-19	2020-04-18
5	Cable	HUBER+SUHNER	CBL2	525178	2019-04-20	2020-04-19
6	Coaxial Cable (below 1GHz)	Top	TYPE16 (13M)	-	2019-09-17	2020-09-16

RF Conducted Testing						
Item	Equipment	Manufacturer	Model No.	Serial No.	Last Calibration Date	Calibration Due Date
1	Spectrum Analyzer	R&S	FSL6	100959	2019-09-17	2020-09-16
2	Coaxial Cable	Top	10Hz-30GHz	-	2019-09-17	2020-09-16
3	Antenna Connector*	Realacc	45RSm	-	2019-09-17	2020-09-16
4	DC Block	Gwave	GDCB-3G-N-SMA	140307001	2019-09-17	2020-09-16

“\*”: The temporary antenna connector is soldered on the PCB board in order to perform conducted tests and this temporary antenna connector is listed in the equipment list.

## 4.2 Measurement Uncertainty

Parameter	Uncertainty
Radio Frequency	$\pm 1 \times 10^{-6}$
RF Power	$\pm 1.0$ dB
RF Power Density	$\pm 2.2$ dB
Radiated Spurious Emissions test	$\pm 5.03$ dB (30M~1000MHz)
	$\pm 5.47$ dB (1000M~25000MHz)
Confidence interval: 95%. Confidence factor:k=2	

## 4.3 Subcontracted

Whether parts of tests for the product have been subcontracted to other labs:

Yes       No

If Yes, list the related test items and lab information:

Test Lab: N/A

Lab address: N/A

Test items: N/A

## 5 Test Summary

Test Items	Test Requirement	Result
Conducted Emissions	15.207	N/A*
Radiated Spurious Emissions	15.205(a) 15.209 15.231(a)	Pass
Periodic Operation	15.231(a)	Pass
Emission Bandwidth	15.231(c)	Pass
Antenna Requirement	15.203	Pass
Note: Pass=Compliance; NC=Not Compliance; NT=Not Tested; N/A=Not Applicable *: The EUT is only powered by battery, no need to evaluate AC Power Conducted Emission.		

## 6 Radiated Spurious Emissions

Test Requirement: FCC Part15 Paragraph 15.231(a), 15.209, 15.205

Test Method: ANSI C63.10:2013

Test Result: PASS

Measurement Distance: 3m

Limit:

Fundamental Frequency (MHz)	Field Strength of Fundamental (uV/m)	Field Strength of Fundamental (dBuV/m)	Field Strength of Spurious Emission (uV/m)	Field Strength of Spurious Emission (dBuV/m)
44.66-40.70	2250	67	225	47
70-130	1250	62	125	42
130-174	1250 to 3750*	62 to 71.48*	125 to 375*	42 to 51.48*
174-260	3750	71.48	375	51.48
260-470	3750 to 12500*	71.48 to 81.94*	375 to 1250*	51.48 to 61.94*
Above 470	12500	81.94	1250	61.94
* linear interpolations				

### 6.1 EUT Operation

Operating Environment :

Temperature: 22.5 °C

Humidity: 53.8% RH

Atmospheric Pressure: 101.5kPa

Test Voltage: DC 3V by Battery

EUT Operation :

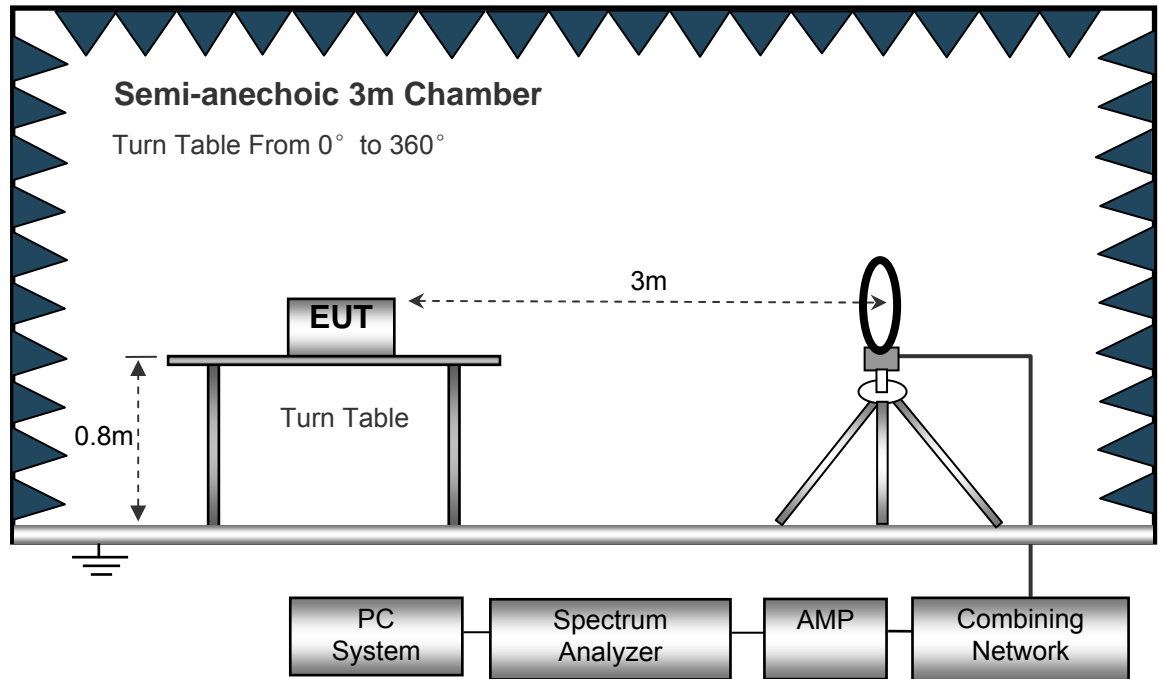
The test was performed in Transmitting mode, the test data were shown in the report.



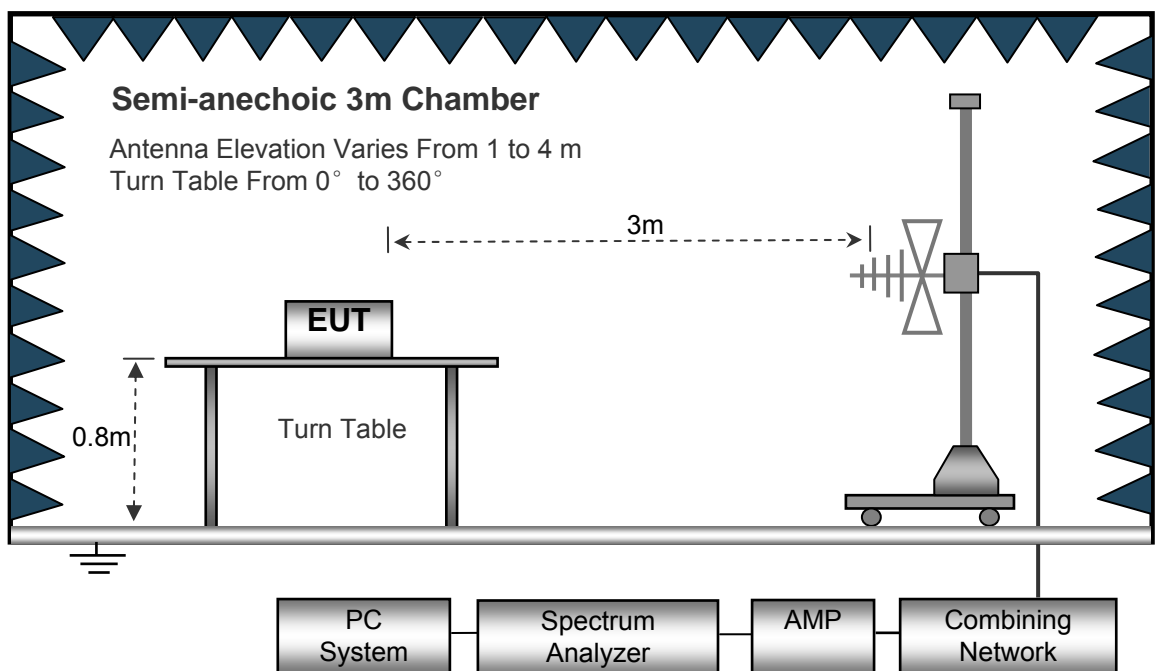
## 6.2 Test Setup

The radiated emission tests were performed in the 3m Semi- Anechoic Chamber test site, using the setup accordance with the ANSI C63.10:2013.

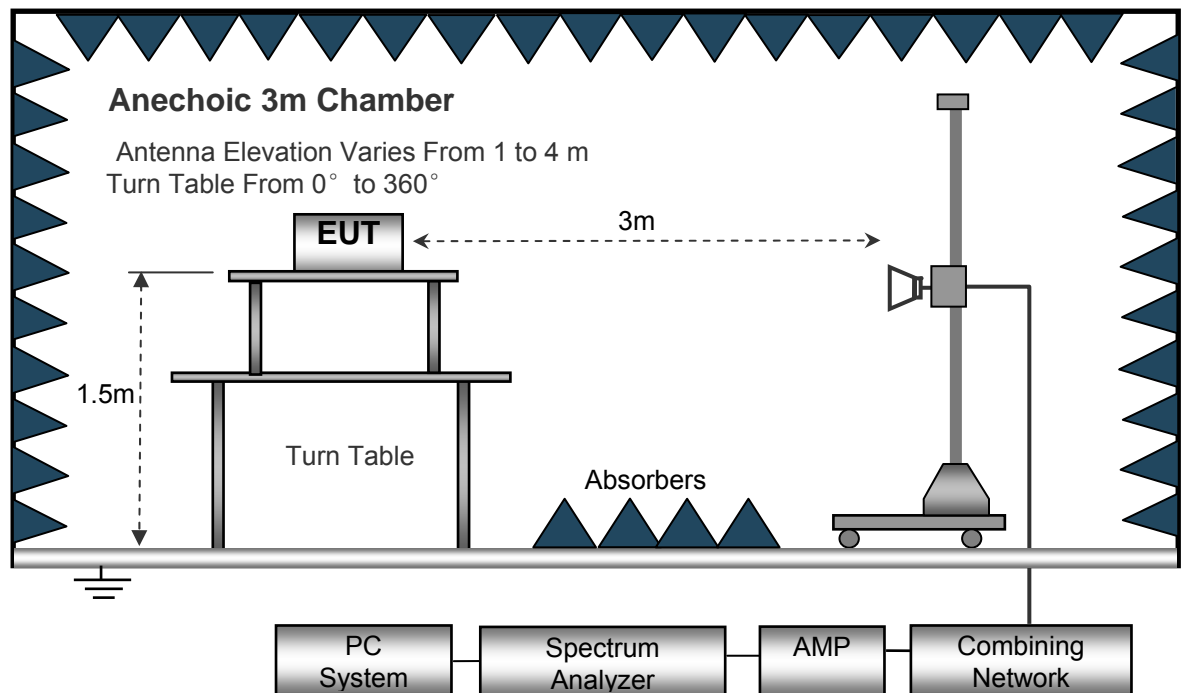
The test setup for emission measurement below 30MHz.



The test setup for emission measurement from 30 MHz to 1 GHz.



The test setup for emission measurement above 1 GHz.



### 6.3 Spectrum Analyzer Setup

Below 30MHz

Sweep Speed ..... Auto  
 IF Bandwidth..... 10kHz  
 Video Bandwidth..... 10kHz  
 Resolution Bandwidth..... 10kHz

30MHz ~ 1GHz

Sweep Speed ..... Auto  
 Detector ..... PK  
 Resolution Bandwidth..... 100kHz  
 Video Bandwidth..... 300kHz

Above 1GHz

Sweep Speed ..... Auto  
 Detector ..... PK  
 Resolution Bandwidth..... 1MHz  
 Video Bandwidth..... 3MHz

## 6.4 Test Procedure

1. The EUT is placed on a turntable. For below 1GHz, the EUT is 0.8m above ground plane; For above 1GHz, the EUT is 1.5m above ground plane.
2. The turntable shall be rotated for 360 degrees to determine the position of maximum emission level.
3. EUT is set 3m away from the receiving antenna, which is moved from 1m to 4m to find out the maximum emissions. The spectrum was investigated from the lowest radio frequency signal generated in the device, without going below 9 kHz, up to the tenth harmonic of the highest fundamental frequency or to 40 GHz, whichever is lower.
4. Maximum procedure was performed on the six highest emissions to ensure EUT compliance.
5. And also, each emission was to be maximized by changing the polarization of receiving antenna both horizontal and vertical.
6. Repeat above procedures until the measurements for all frequencies are complete.
7. The radiation measurements are tested under 3-axes(X, Y, Z) position(X denotes lying on the table, Y denotes side stand and Z denotes vertical stand), After pre-test, It was found that the worse radiation emission was get at the X position. So the data shown was the X position only.

## 6.5 Summary of Test Results

### Test Frequency: 9 kHz~30 MHz

The measurements were more than 20 dB below the limit and not reported.

### Test Frequency: 30 MHz ~ 5 GHz

#### Test Channel: 433.99MHz

Frequency	Receiver Reading (PK)	Turn table Angle	RX Antenna		Corrected Factor	Corrected Amplitude (PK)	FCC Part 15.231/15.209/205	
			Height	Polar			Limit	Margin
(MHz)	(dB $\mu$ V)	Degree	(m)	(H/V)	(dB/m)	(dB $\mu$ V/m)	(dB $\mu$ V/m)	(dB)
433.99	96.15	235	1.2	H	-7.64	88.51	100.83	-12.32
433.99	90.84	23	1.1	V	-7.64	83.20	100.83	-17.63
867.98	55.81	177	1.2	H	1.13	56.94	80.83	-23.89
867.98	47.31	335	1.3	V	1.13	48.44	80.83	-32.39
1735.96	70.10	240	1.5	H	-9.99	60.11	74.00	-13.89
1735.96	69.33	308	1.3	V	-9.99	59.34	74.00	-14.66
2169.95	69.70	27	1.2	H	-9.65	60.05	74.00	-13.95
2169.95	69.50	137	1.0	V	-9.65	59.85	74.00	-14.15

**AV = Peak +20Log<sub>10</sub> (duty cycle) =PK+ (-9.18)** [refer to section 7 for more detail]

Frequency	PK	RX Antenna Polar	Duty cycle Factor	Calculated AV	FCC Part 15.231/209/205	
					Limit	Margin
(MHz)	(dB $\mu$ V/m)	(H/V)	(dB)	(dB $\mu$ V/m)	(dB $\mu$ V/m)	(dB)
433.99	88.51	H	-9.18	79.33	80.83	-1.50
433.99	83.2	V	-9.18	74.02	80.83	-6.81
867.98	56.94	H	-9.18	47.76	60.83	-13.07
867.98	48.44	V	-9.18	39.26	60.83	-21.57
1735.96	60.11	H	-9.18	50.93	54.00	-3.07
1735.96	59.34	V	-9.18	50.16	54.00	-3.84
2169.95	60.05	H	-9.18	50.87	54.00	-3.13
2169.95	59.85	V	-9.18	50.67	54.00	-3.33

## 7 Periodic Operation

The duty cycle was determined by the following equation:

To calculate the actual field intensity, The duty cycle correction factor in decibel is needed for later use and can be obtained from following conversion

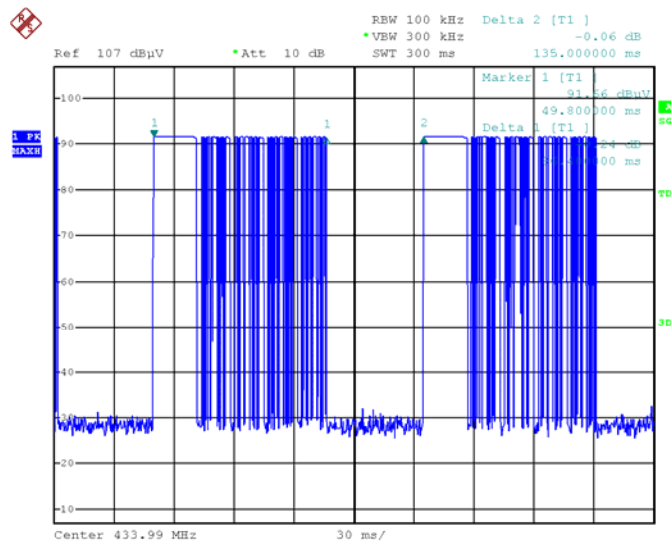
$$\text{Duty Cycle(\%)} = \text{Total On interval in a complete pulse train} / \text{Length of a complete pulse train} * \%$$

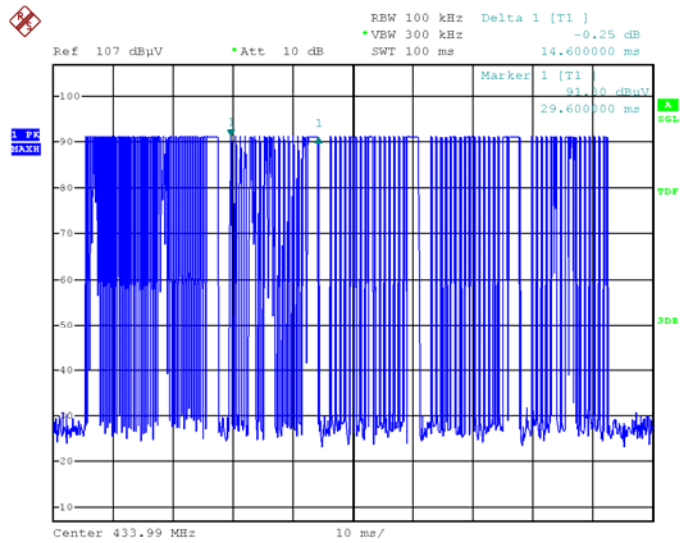
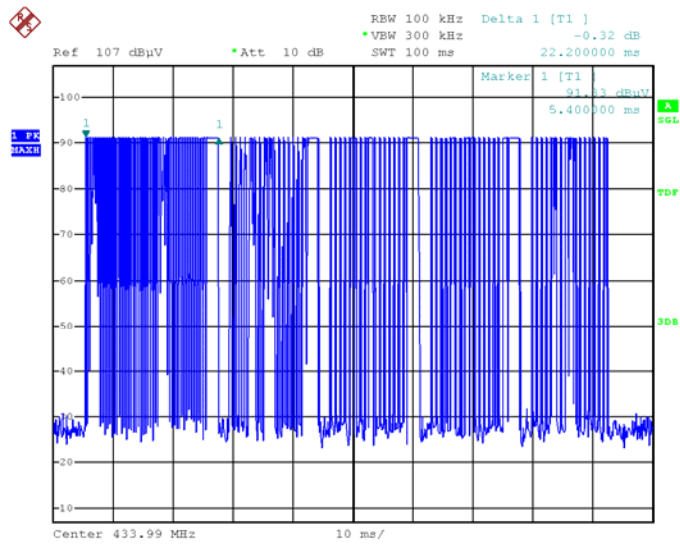
$$\text{Duty Cycle Correction Factor(dB)} = 20 * \text{Log}_{10}(\text{Duty Cycle(\%)})$$

Total transmission time(ms)	$0.16 \times 50 + 1.96 + (0.16 \times 12 + 0.58 \times 4 + 1.96) \times 4 = 34.76$
Length of a complete transmission period(ms)	100*
Duty Cycle(%)	34.76
Duty Cycle Correction Factor(dB)	-9.18

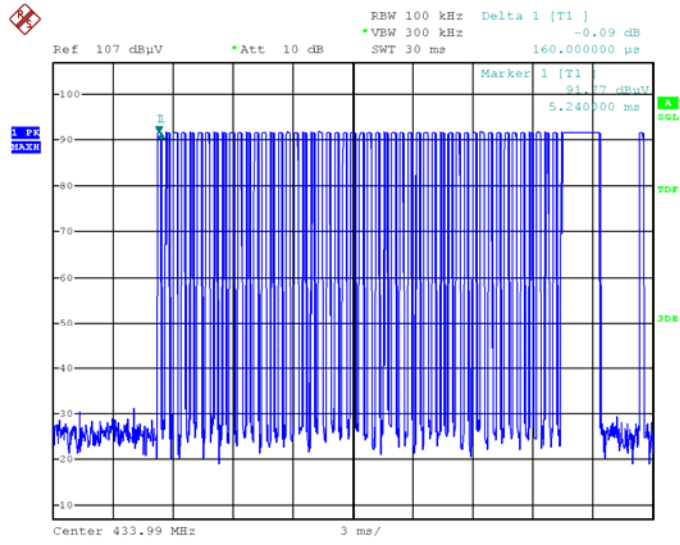
(\* Note: the transmitter operates for longer than 0.1 seconds, the measured field strength shall be determined from the average absolute voltage during a 0.1 second interval during which the field strength is at its maximum value. So the Length of a complete transmission period=100ms)

Refer to the duty cycle plot (as below)

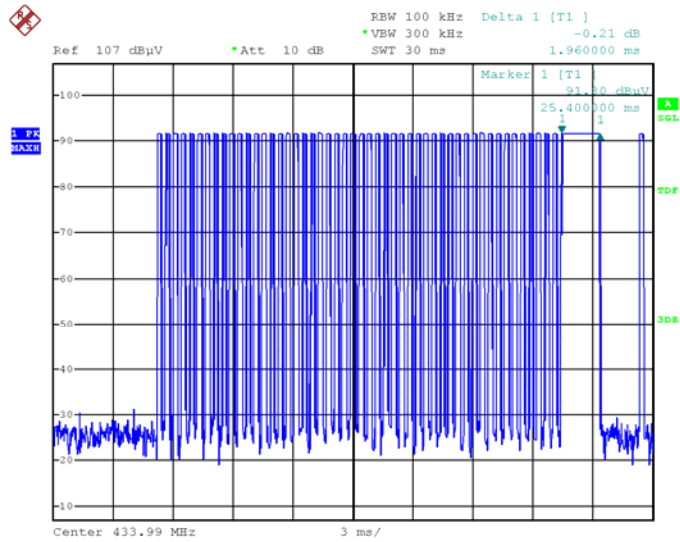




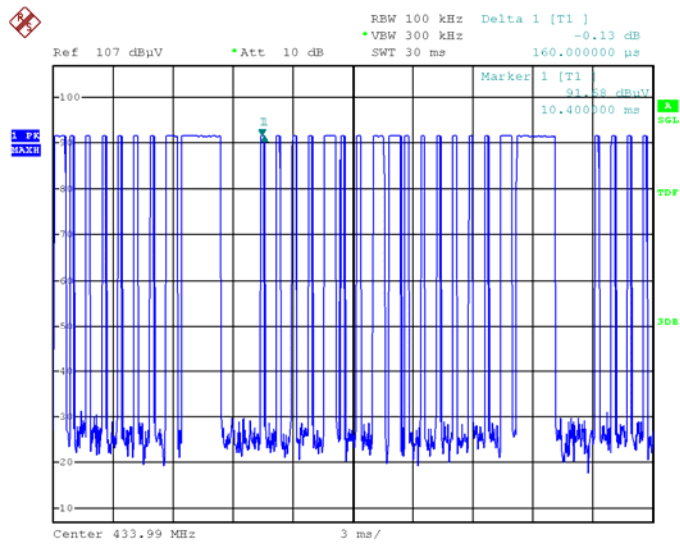
### Pulse 1



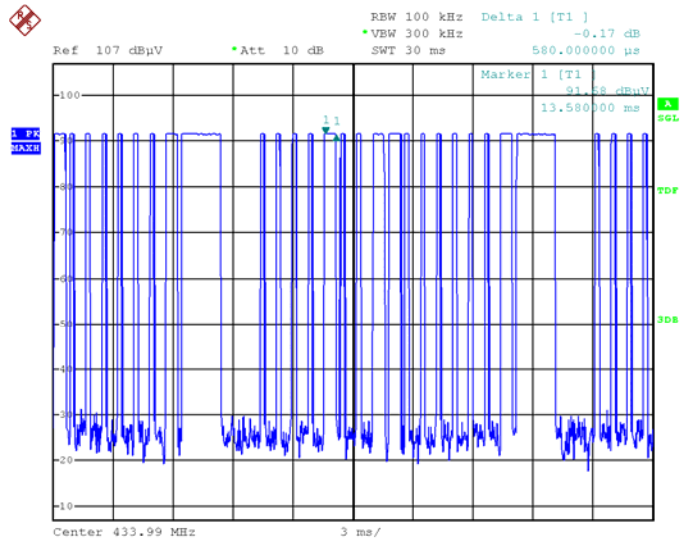
### Pulse 2



### Pulse 3

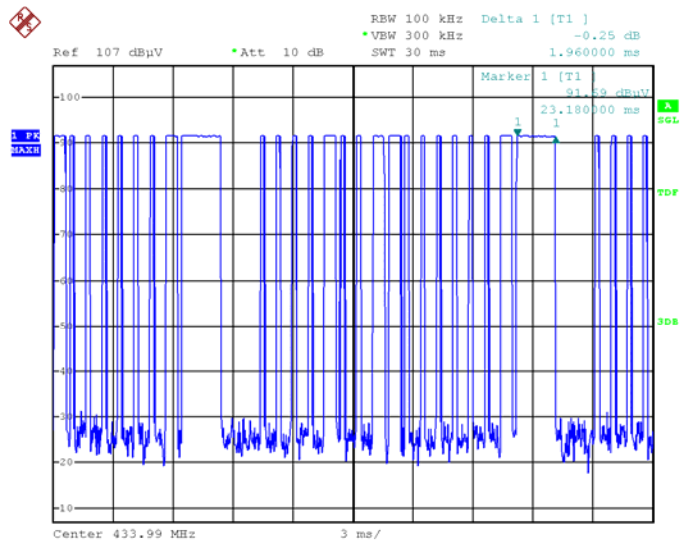


### Pulse 4



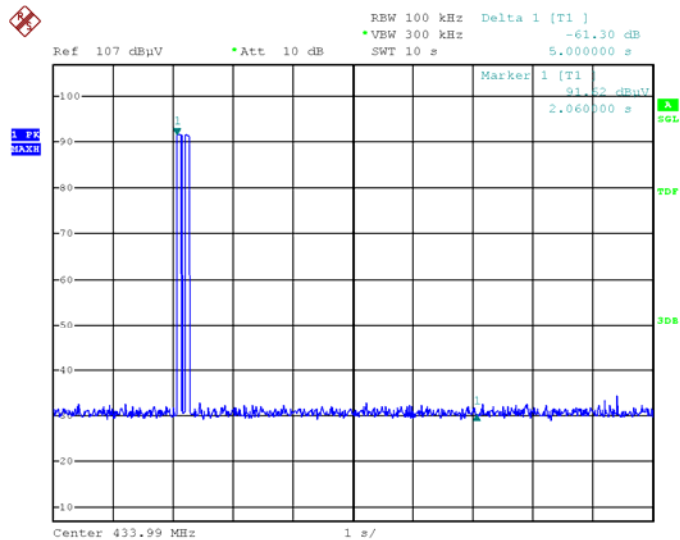


Pulse 5



FCC Part15.231 (a) (1) A manually operated transmitter shall employ a switch that will automatically deactivate the transmitter within not more than 5 seconds of being released.

(2)A transmitter activated automatically shall cease transmission within 5 seconds after activation.



## 8 Emission Bandwidth

Test Requirement:	FCC Part15.231(c)
Test Method:	FCC Part15.231(c)
Limit	The bandwidth of the emission shall be no wider than 0.25% of the center frequency for devices operating above 70 MHz and below 900 MHz. For devices operating above 900 MHz, the emission shall be no wider than 0.5% of the center frequency.

### 8.1 Test Procedure

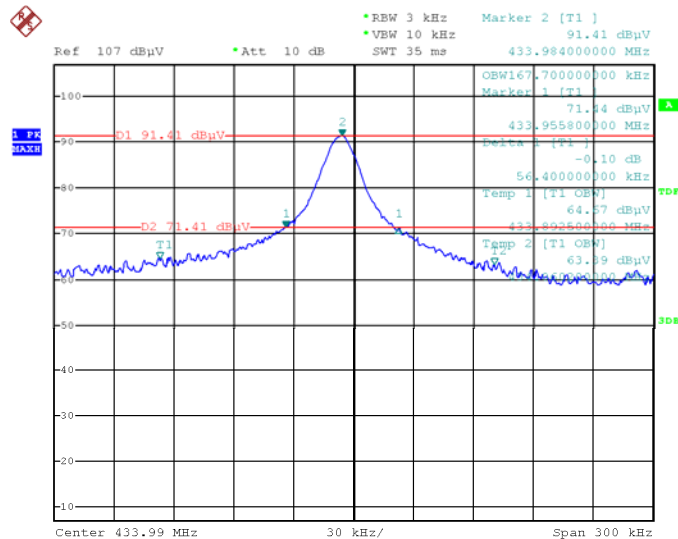
1. The transmitter output (antenna port) was connected to the spectrum analyzer. EUT and its simulators are placed on a table, let EUT working in test mode, then test it.
2. The bandwidth of the fundamental frequency was measure by spectrum analyser with 10 kHz RBW and 30 kHz VBW. The 20 dB bandwidth was recorded.

### 8.2 Test Result

Frequency (MHz)	20dB Bandwidth Emission(kHz)	99% Bandwidth Emission(kHz)	Limit (kHz)	Result
433.99	56.40	167.70	1084.98	Compliance

Limit=Center Frequency\*0.25%

Test Plot



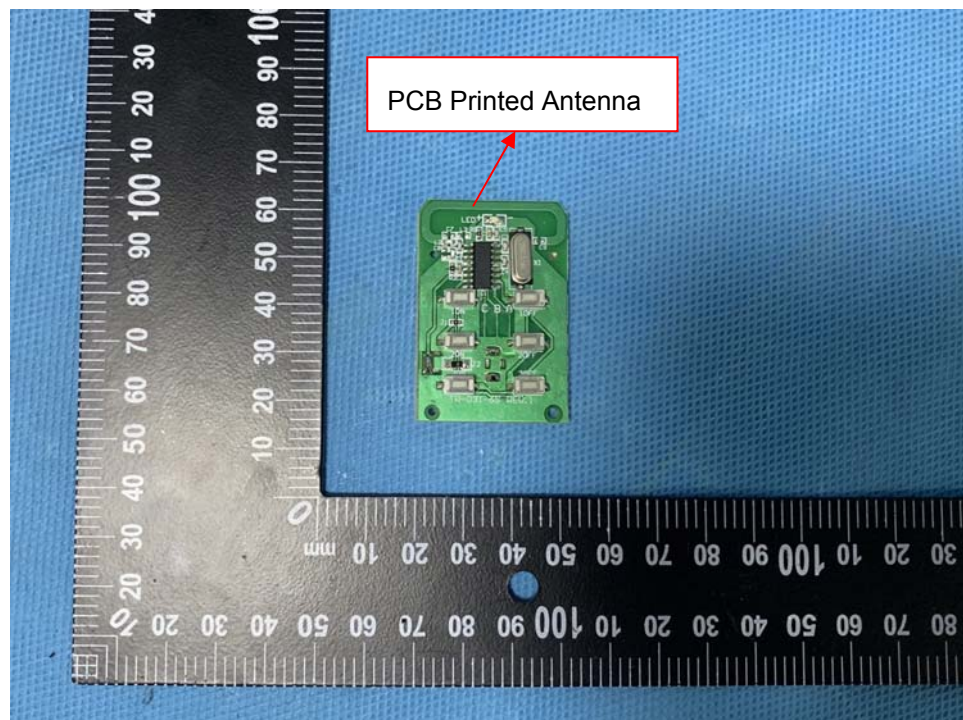
## 9 Antenna Requirement

An intentional radiator shall be designed to ensure that no antenna other than that furnished by the responsible party shall be used with the device. The use of a permanently attached antenna or of an antenna that uses a unique coupling to the intentional radiator shall be considered sufficient to comply with the provisions of this section. The manufacturer may design the unit so that a broken antenna can be replaced by the user, but the use of a standard antenna jack or electrical connector is prohibited. This requirement does not apply to carrier current devices or to devices operated under the provisions of §15.211, §15.213, §15.217, §15.219, or §15.221. Further, this requirement does not apply to intentional radiators that must be professionally installed, such as perimeter protection systems and some field disturbance sensors, or to other intentional radiators which, in accordance with §15.31(d), must be measured at the installation site. However, the installer shall be responsible for ensuring that the proper antenna is employed so that the limits in this part are not exceeded.

For intentional device, according to FCC 47 CFR Section 15.203, an intentional radiator shall be designed to ensure that no antenna other than that furnished by the responsible party shall be used with the device.

Result:

The EUT has one PCB Printed Antenna, the gain is 0 dBi. meets the requirements of FCC 15.203.



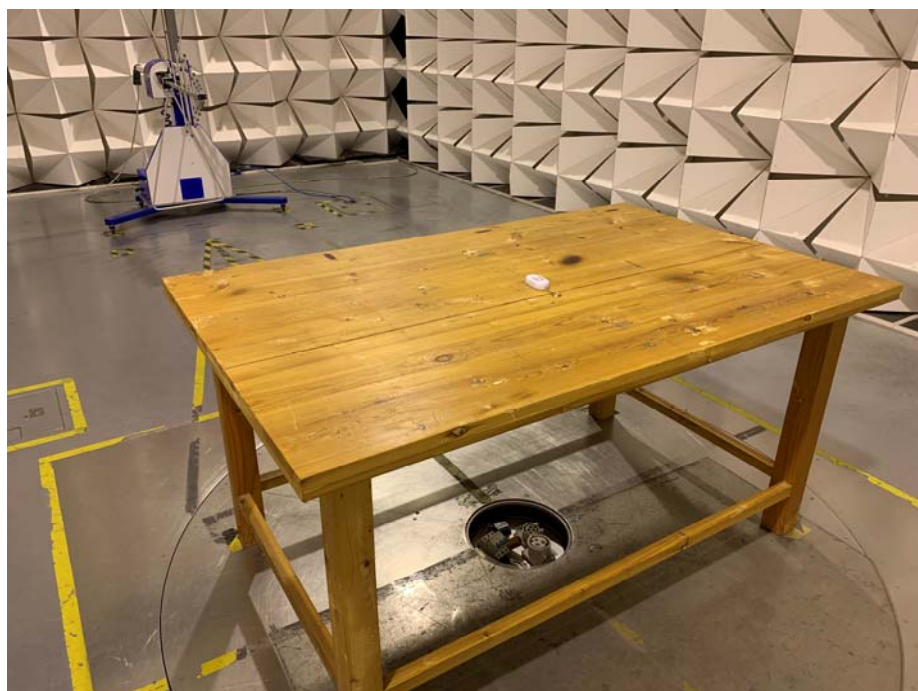
## 10 Photographs – Model TR-031-6S Test Setup Photos

### 10.1 Photograph – Radiated Spurious Emissions Test Setup Photos

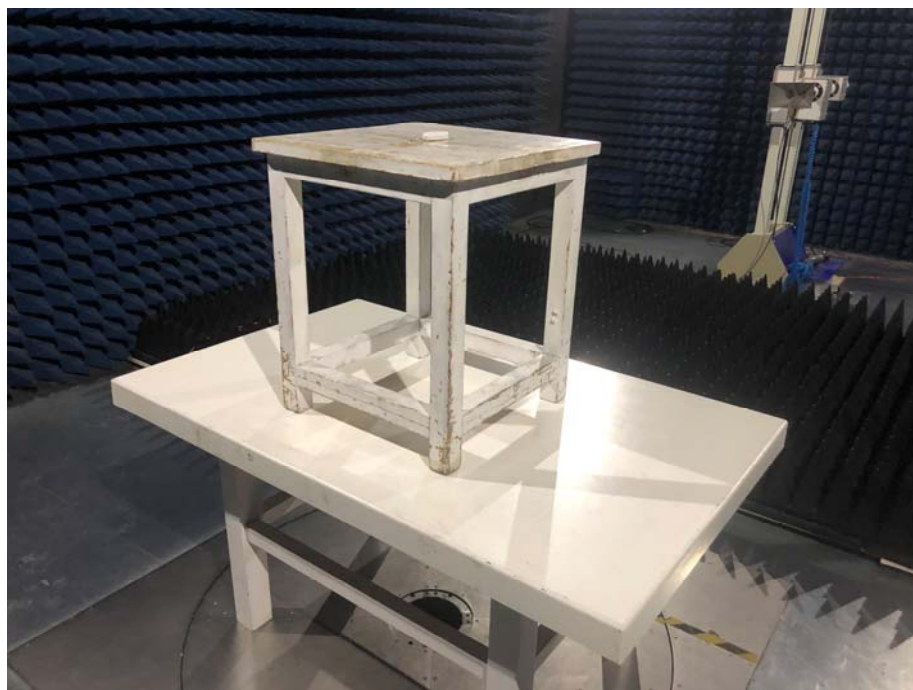
Below 30MHz



From 30MHz to 1GHz



Above 1GHz





## 11 Photographs - Constructional Details

### 11.1 Model TR-031-6S - External Photos





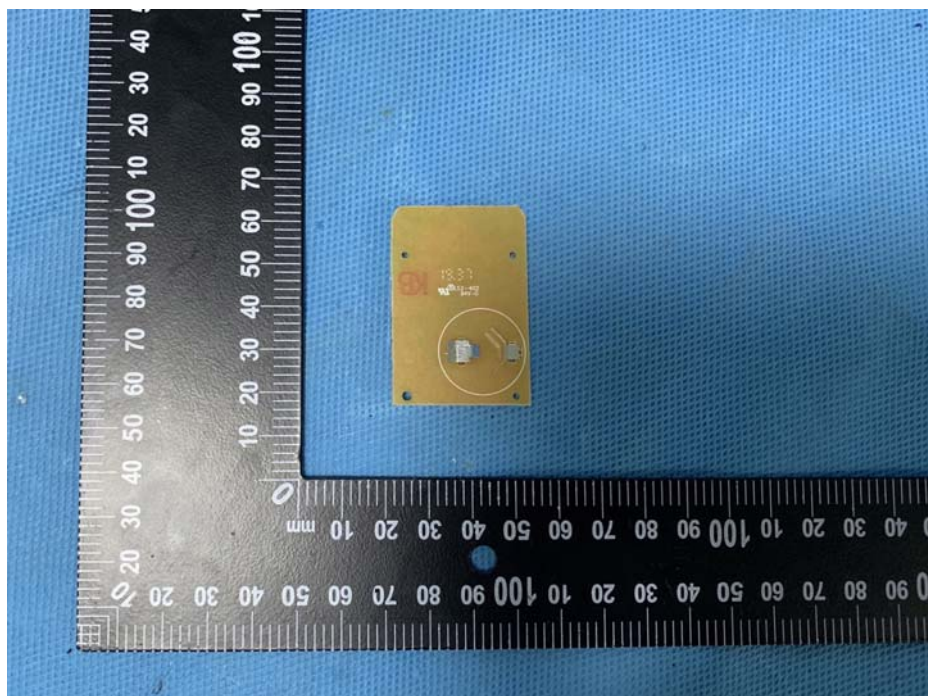




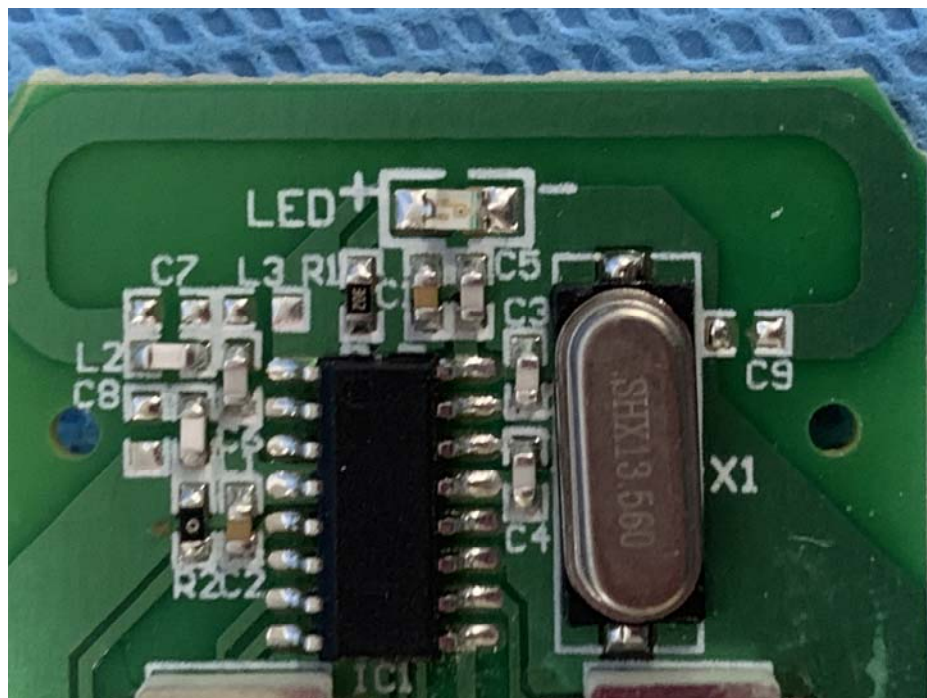
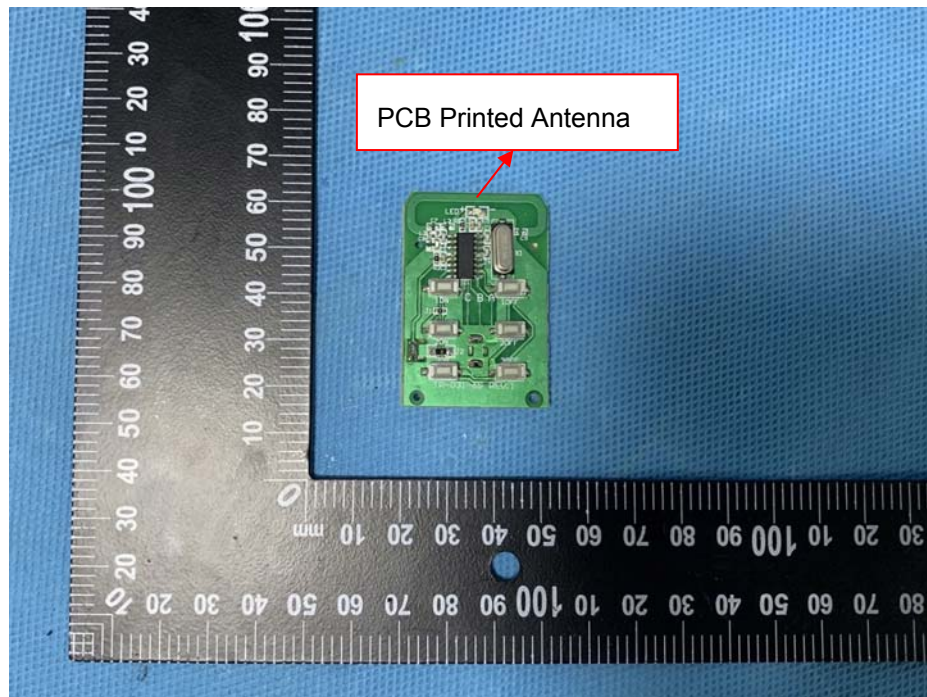




### 11.2 Model TR-031-6S - Internal Photos







====End of Report====