

TR-025S Remote Controller User Manual

TM-121 Indoor Remote Controlled Countdown Timer

IMPORTANT SAFEGUARDS

NOTE: These are general definitions only; all may not pertain to the actual product purchased.

DANGER: Indicates an imminently hazardous situation which, if not avoided, will result in death or serious injury. Usage of this signal word is limited to the most extreme situations.

WARNING: Indicates potentially hazardous situation, which, if not avoided, may result in minor / moderate injury or product/ property damage. It also alerts against unsafe practices.

CAUTION: Indicates a potentially hazardous situation, which, if not avoided, may result in minor/moderate injury or product/ property damage. It also alerts against unsafe practices.

When using electrical products, always follow basic safety precautions including the following:



READ ALL INSTRUCTIONS BEFORE USE.

⚠ WARNING

Choking Hazard— Small parts.
Not for children under 3 years.

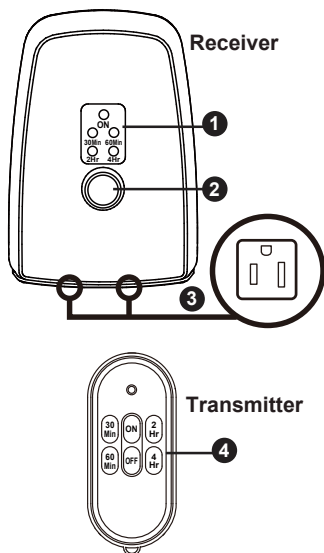
⚠ WARNING-- To reduce the risk of fire, electric shock, or serious personal injury

- Do not immerse the product in liquids
- Do not use an electrical device or appliance with this product whose electrical specifications exceed those specified in the "Electrical Specifications" section of this manual.
- For Indoor use.

⚠ CAUTION-- To reduce the risk of personal injury or product/ property damage:

- This product is intended for non-commercial, non-industrial use in the remote control of two electrical outlets.
- Do not use this product for any other purpose.

Button Layout



1. Operating Mode:
Timer will turn ON, 30 min, 60 min, 2 Hr, 4Hr.
2. Select button:
To select the function and repeatedly.
Power ON → 30 min → 60 min → 2 Hr → 4Hr → OFF → ON
3. Outlets:
Plug the lights or devices to be controlled by the timer into one of the outlets.
4. Transmitter

Features:

- Control electrical outlet up to a distance of 100 feet.
- Has two grounded receptacles.
- Weather resistant housing protects connected lighting.
- Countdown function automatically turns power off 30 min, 60 min, 2 Hr, 4Hr later.

Installation

1. Plug the Receiver into a standard 125-volt AC electrical outlet.
2. Confirm that the electrical specifications of an item you wish to use with this product do not exceed those specified in the "Electrical Specifications" section. Plug the item into an outlet of the Receiver.
3. Remove the plastic battery tab from the Battery Compartment in the back of the Remote Control to activate the DC 12V Type A23 pre-installed battery.

Operating Instructions

Control by transmitter:

1. Press the ON button on the transmitter to turn the receiver ON.
2. Press OFF button on the transmitter to turn the receiver OFF.
3. Press 30 min, 60 min, 2 Hr, 4Hr, to turn the receiver on and off after that specific min or hour.

Control by receiver:

1. Press the button. The power indicator will light and the two outlets are "ON".
2. Press the button and select 30 min, 60 min, 2 Hr, 4Hr, to turn the receiver on and off after that specific min or hour.
3. Continue pressing the button until all indicator lights are out. All two outlets are turned off.

ELECTRICAL RATINGS

Voltage	Frequency	Wattage	Amperage	Horse Power
125VAC	60Hz	*1000W-1250W	10A	1/3HP

* Maximum combined wattage for items using a tungsten bulb plugged into the Receiver is 1000W.

* Maximum combined wattage for appliances plugged into the Receiver is 1250W.

RECEIVER MODEL: TM-121

TRANSMITTER MODEL: TR-025S

FCC ID: PAGTR-025S

IC: 4494A-TR025S

Battery Handling and Usage

WARNING: Keep batteries away from children and pets.

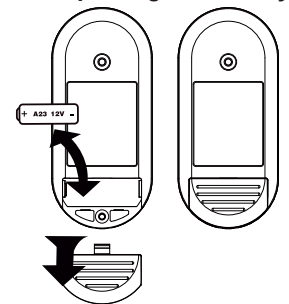
- Follow the battery manufacturer's safety and usage instructions.
- Insert the battery observing the proper polarity (+/-) as indicated inside the Battery Compartment.
- Remove a spent or discharged battery from the product. remove the battery when not using the product for an extended period.
- Never throw batteries into a fire. Do not expose batteries to fire or other heat sources.
- Battery contains mercury. Do not put in trash. Recycle or manage as hazardous waste.
- Dispose or recycle spent / discharged batteries in compliance with all applicable laws. For detailed information contact your local solid waste authority.

CAUTION: Failure to properly align the battery polarity can cause personal injury and/or property damage.

Replacing the battery

- Remove the Battery compartment cover from the back of the remote control by sliding the cover in the direction that its trends curve.
- Remove the spent battery and place a new DC 12V Type A23 battery into the Battery Compartment correctly observing the polarity indications (+/-) inside the Battery Compartment.
- Replace the Battery Compartment Cover.
- Clear the battery contacts and also those of the device prior to battery installation

Replacing the battery



Federal Communications Commission

Interference Statement

This equipment has been tested and found to comply with the limits for Class B digital device, pursuant to part 15 of the FCC Rules. These limits are designed to provide reasonable protection against harmful interference in a residential installation. This equipment generates, uses and can radiate radio frequency energy and, if not installed and used in accordance with the instructions, may cause harmful interference to radio or television reception, which can be determined by turning the equipment off and on, the user is encouraged to try to correct the interference by one or more of the following measures:

- Reorient or relocate the receiving antenna.
- Increase the separation between the equipment and the receiver.
- Connect the equipment into an outlet on a circuit different from that to which the receiver is connected.
- Consult the dealer or an experienced radio/TV technician for help.

This device complies with Part 15 of the FCC Rules.

Operation is subject to the following two conditions:

- (1) This device may not cause harmful interference, and
- (2) this device must accept any interference received, including interference that may cause undesired operation.

FCC Caution: Any changes or modifications not expressly approved by the party responsible for compliance could void the user's authority to operate this equipment.

Industry Canada statement:

This Class B digital apparatus complies with Canadian ICES-003.

This device complies with Industry Canada license-exempt RSS standard(s).

Operation is subject to the following two conditions: (1) this device may not cause interference, and (2) this device must accept any interference, including interference that may cause undesired operation of the device.

Le présent appareil est conforme aux CNR d'Industrie Canada applicables aux appareils radio exempts de licence. L'exploitation est autorisée aux deux conditions suivantes : (1) l'appareil ne doit pas produire de brouillage, et (2) l'utilisateur de l'appareil doit accepter tout brouillage radioélectrique subi, même si le brouillage est susceptible d'en compromettre le fonctionnement.

Made in China

SAVE THESE INSTRUCTIONS!