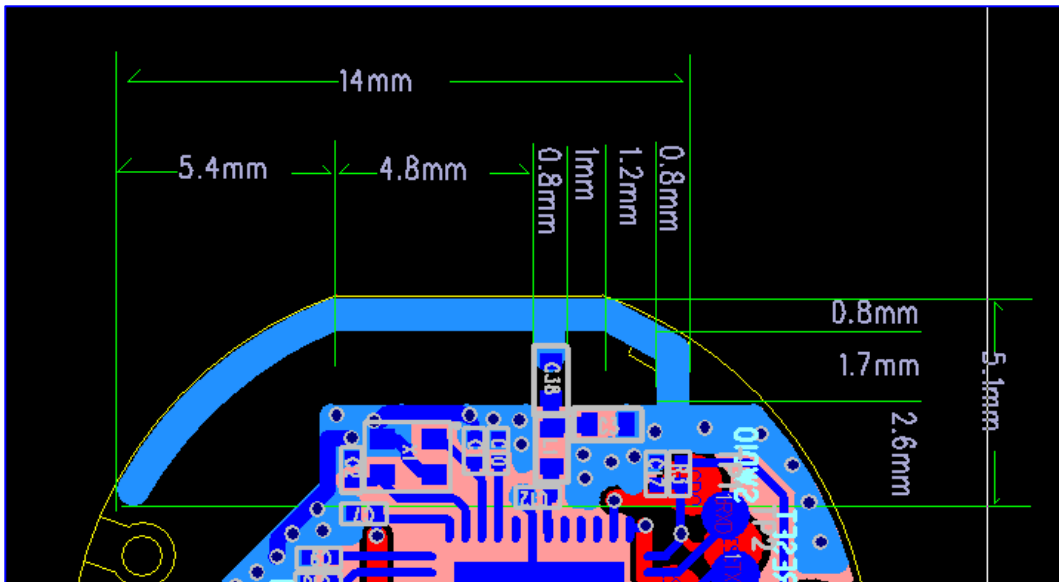


# Antenna Specification

## 1. Antenna Describe

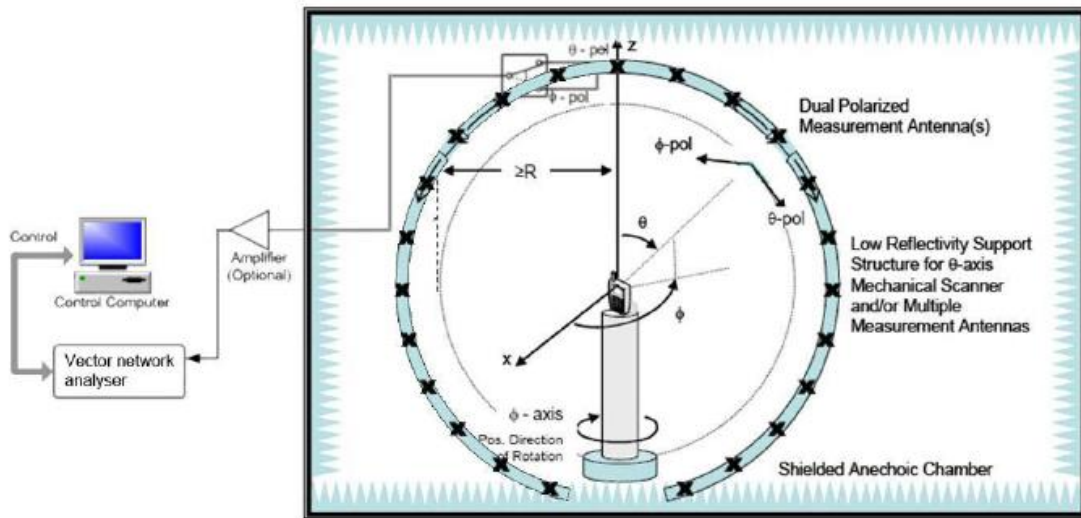
Antenna Manufacturer	Shenzhen HamyWe Technology Co., Ltd
Address	401, Building B, Jinghang Industrial Park, Xingdong Community 71, Xin'an Street, Bao'an District, Shenzhen
Antenna Model	WO212
Antenna Type	PCB Antenna
Antenna Gain	-0.21dBi Max
Frequency Rang	2400-2500MHz
VSWR	$\leq 2$
Input Impedance	50 $\Omega$

## 2. External View Drawing

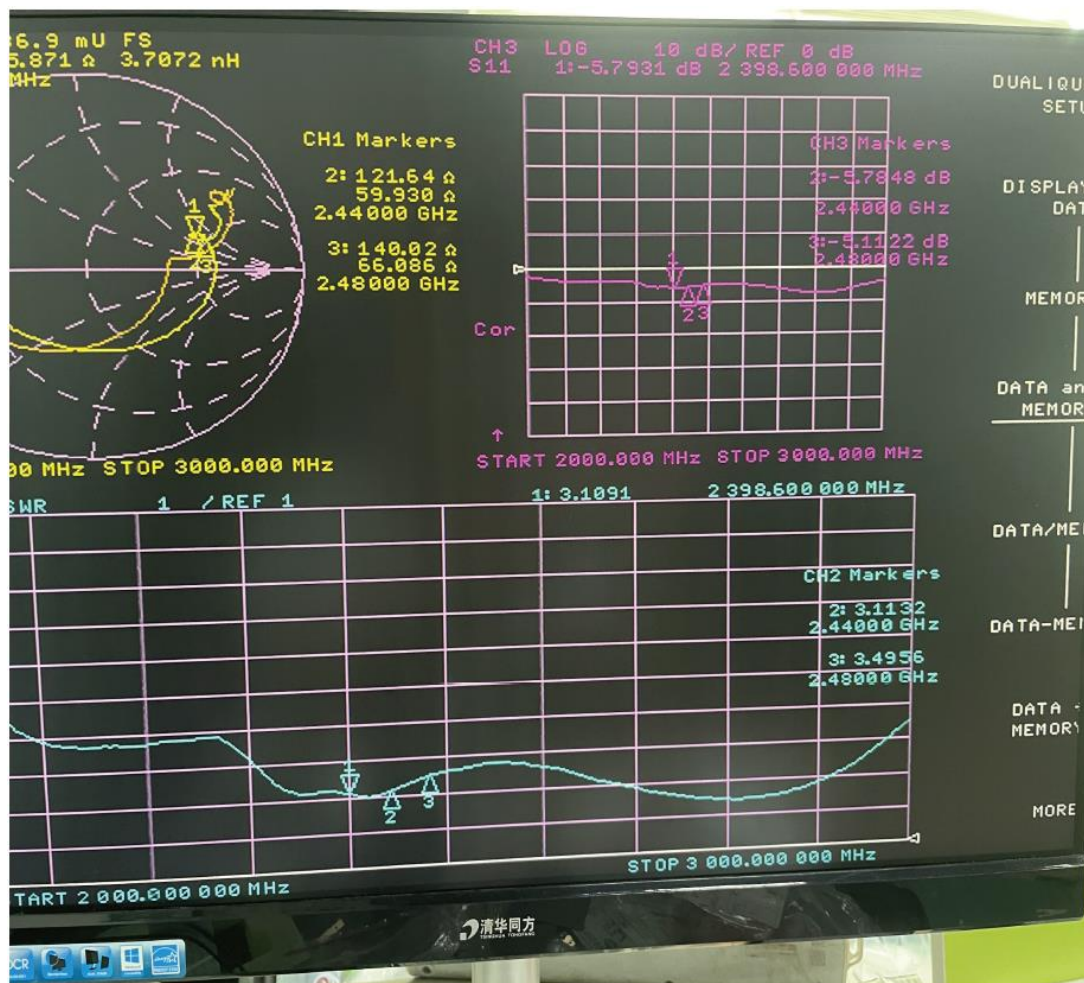


### 3. Measurement Result

#### 3.1 Test Setup



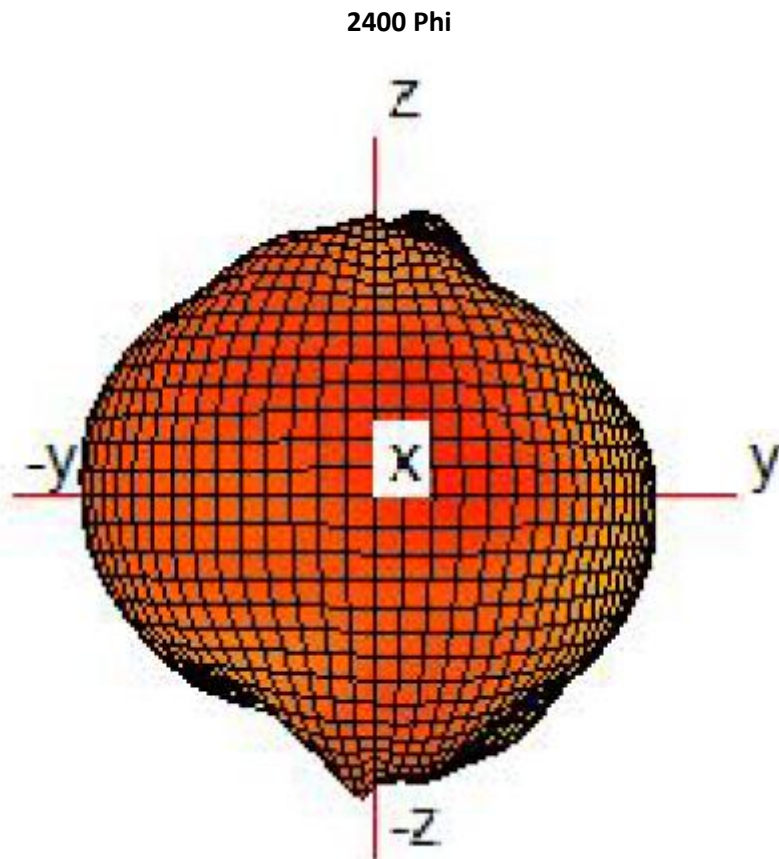
#### 3.2 S11 Parameter



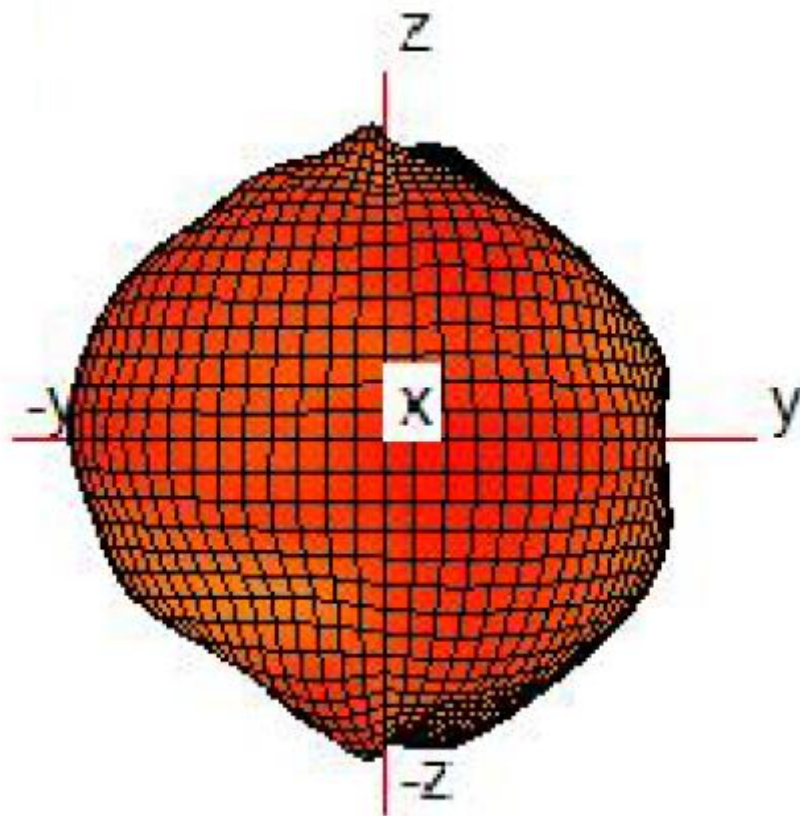
### 3.3 Antenna test data

Frequency (MHz)	Efficiency (%)	Gain (dBi)
2400	15.87	-1.58
2410	16.54	-1.34
2420	17.61	-1.21
2430	17.98	-0.95
2440	18.35	-0.57
2450	19.21	-0.42
2460	20.12	-0.21
2470	20.35	-0.34
2480	20.65	-0.49
2490	20.87	-0.79
2500	19.64	-1.03

### 3.4 Antenna test diagram



2450 Phi



2480 Phi

