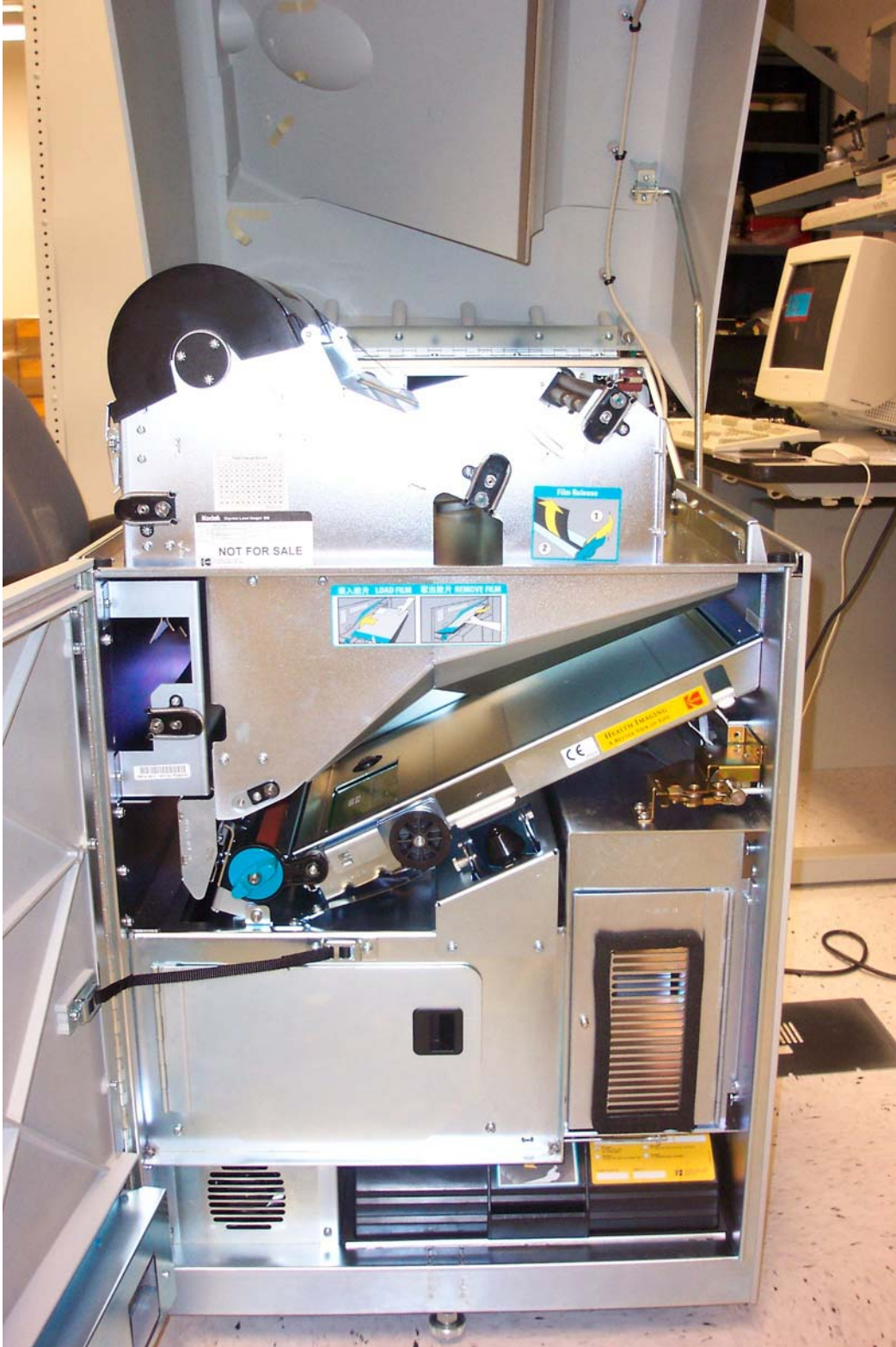


Disassembly - Front of Imager Open



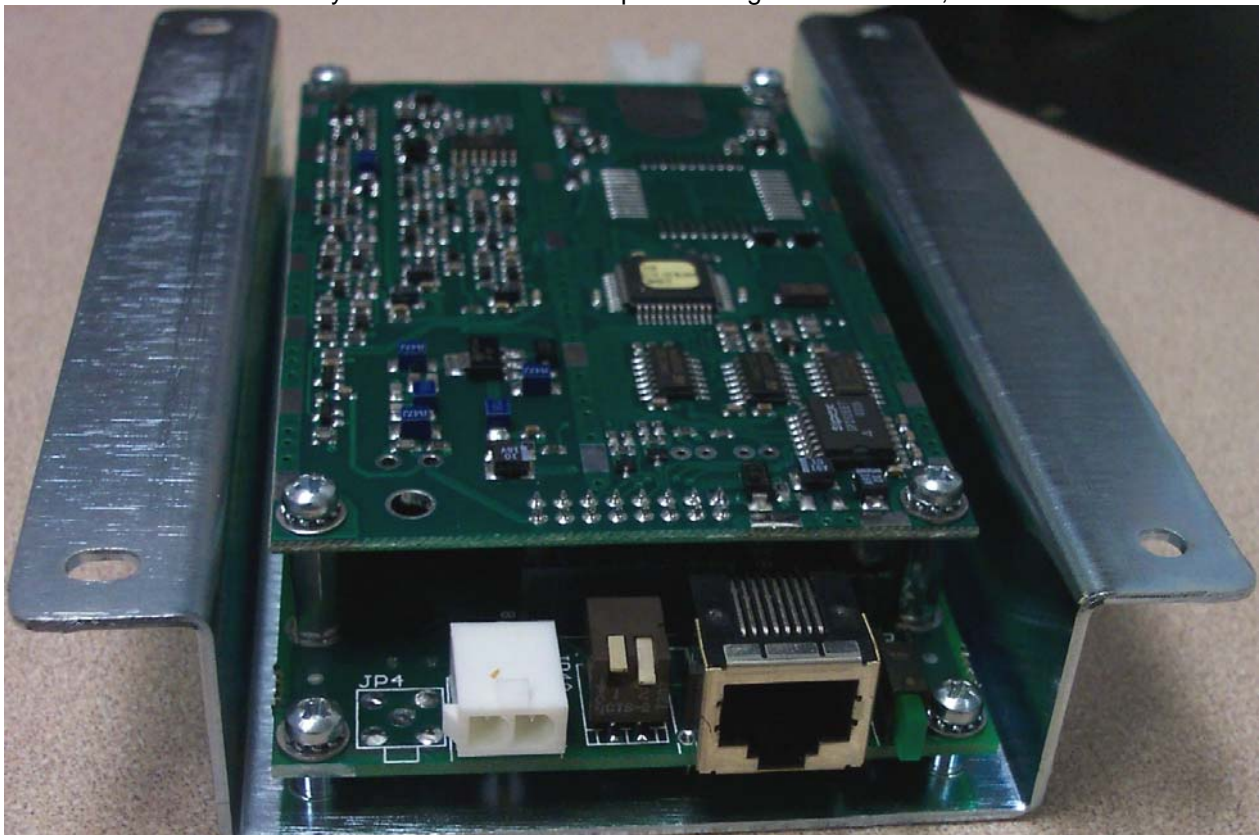
Disassembly - Rear of Imager Open



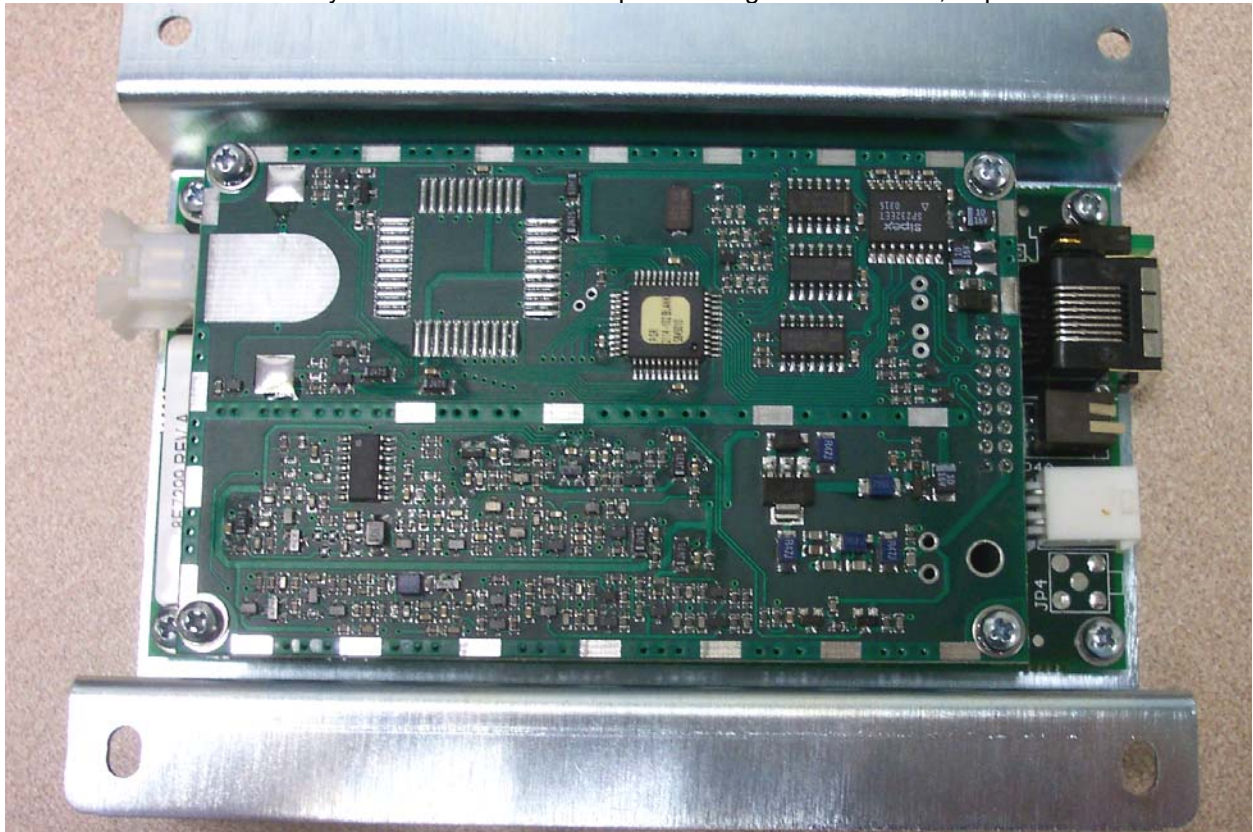
Disassembly - RF Tag in Imager



Disassembly - TI Board shown on top of RF Tag Board in cover, End View



Disassembly - TI Board shown on top of RF Tag Board in cover, Top View



Disassembly - RF Tag Board in Cover, End View



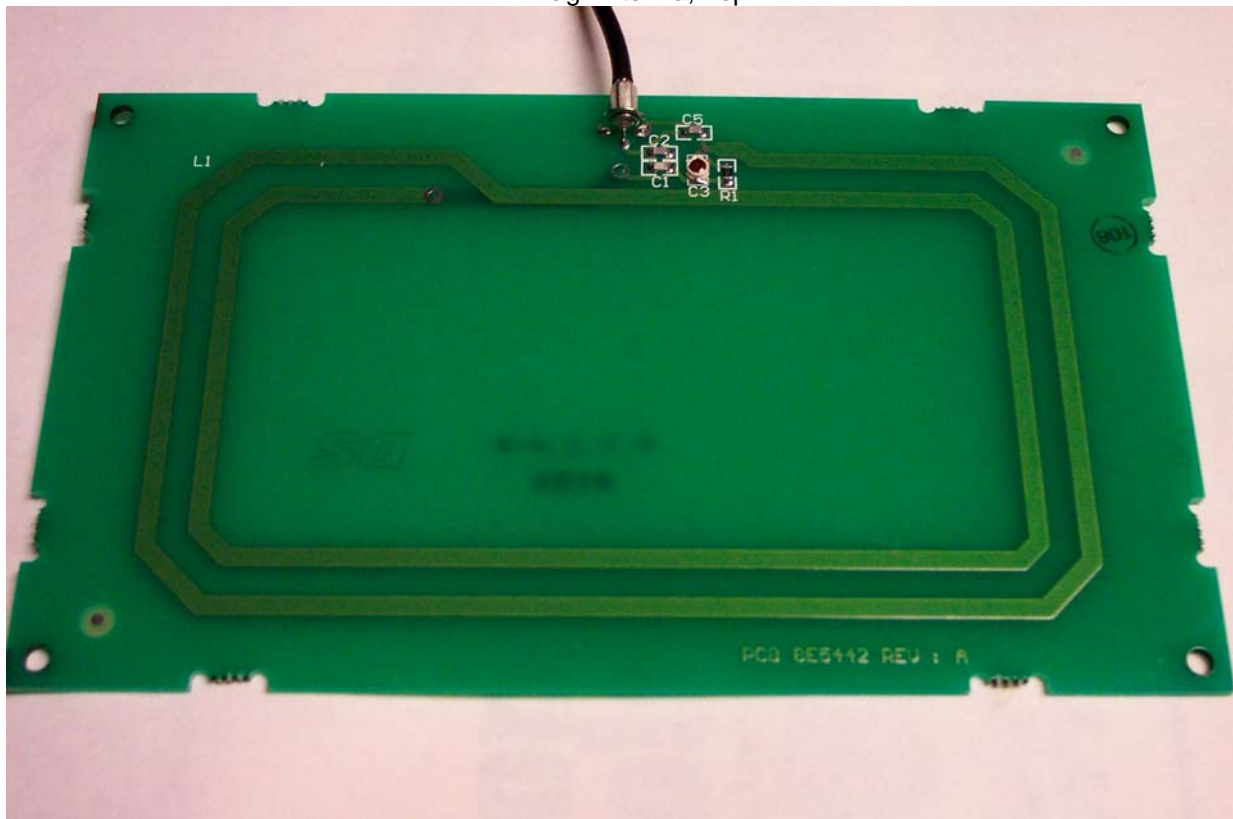
Disassembly - RF Tag Assembly in cover



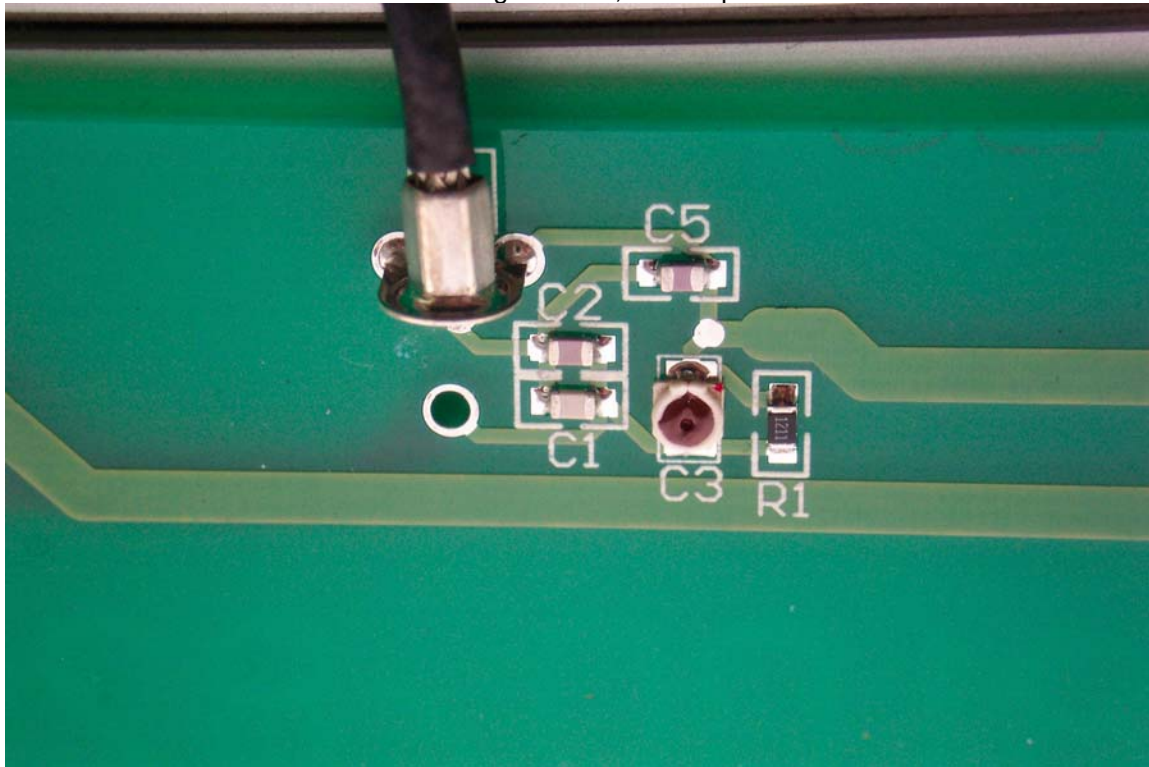
RF Tag Antenna, Bottom



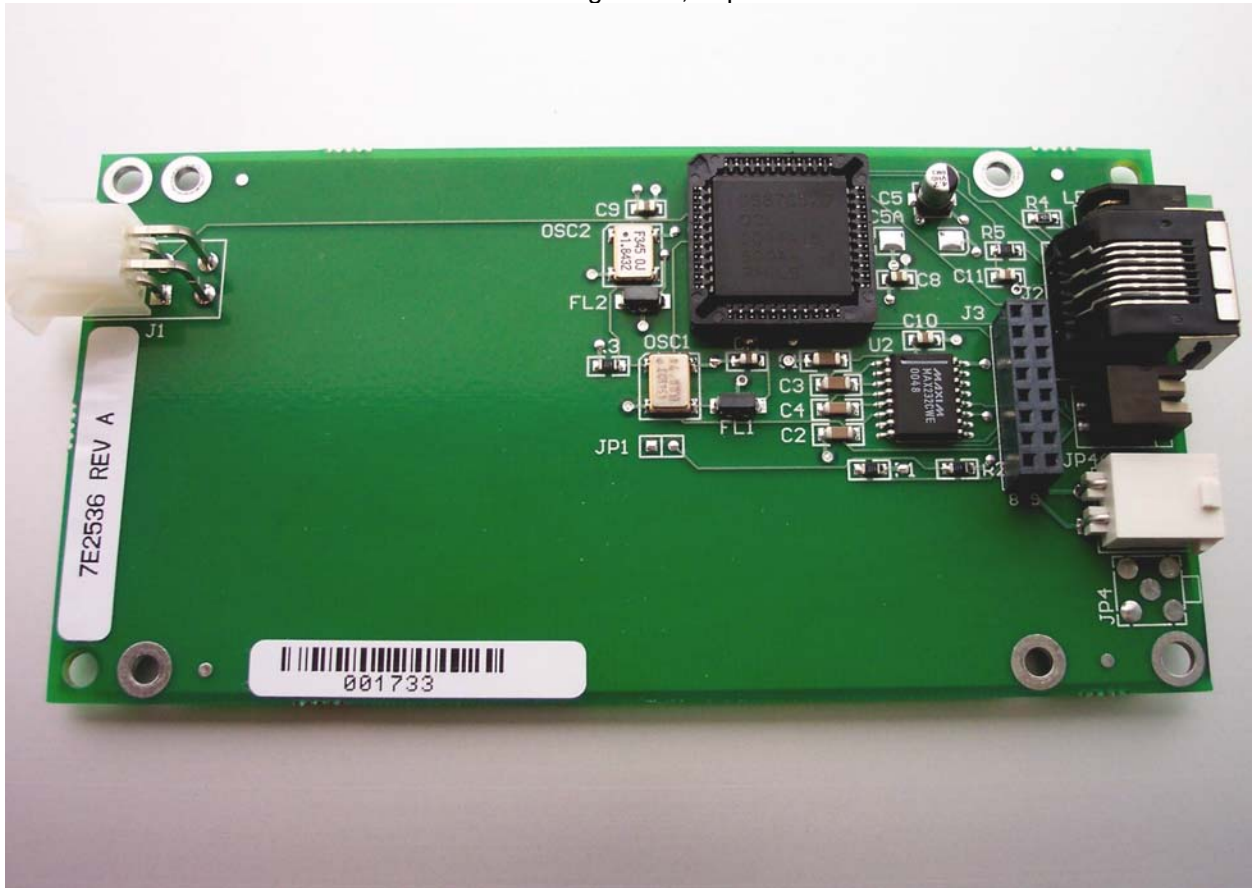
RF Tag Antenna, Top



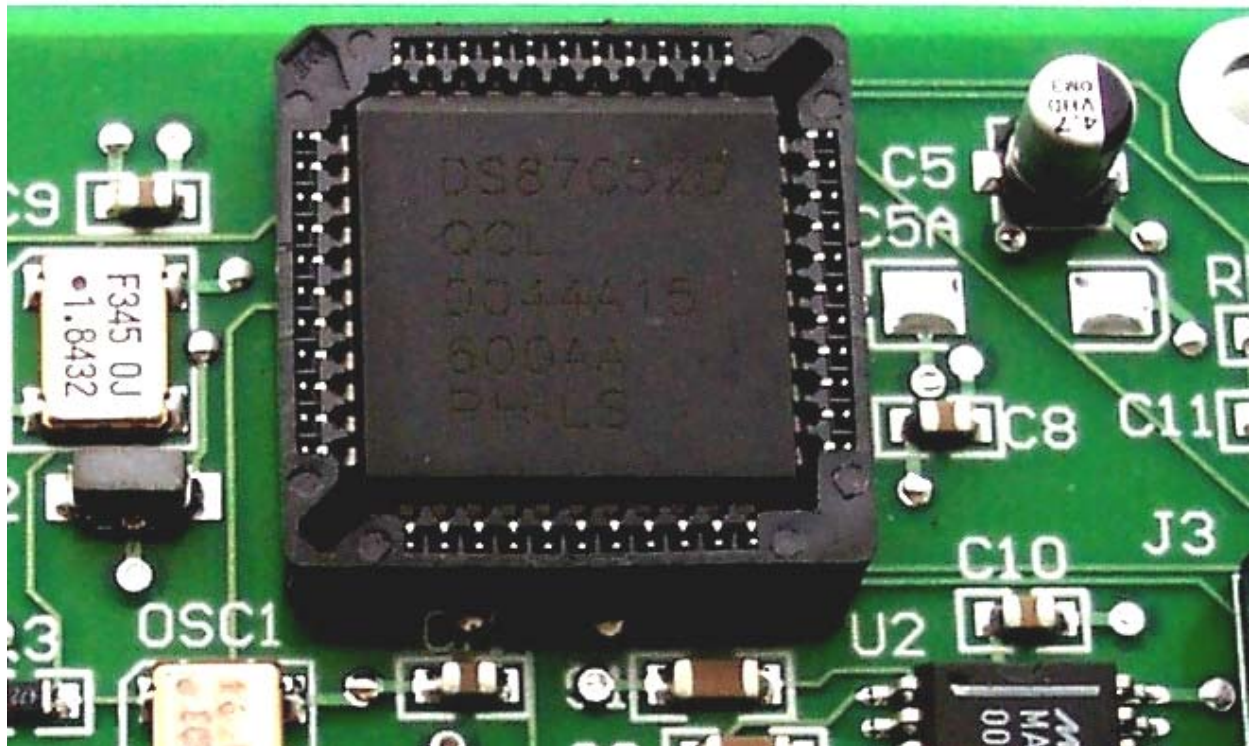
RF Tag Antenna, Close-up



RF Tag Board, Top



RF Tag Board, Top - Close-up of component

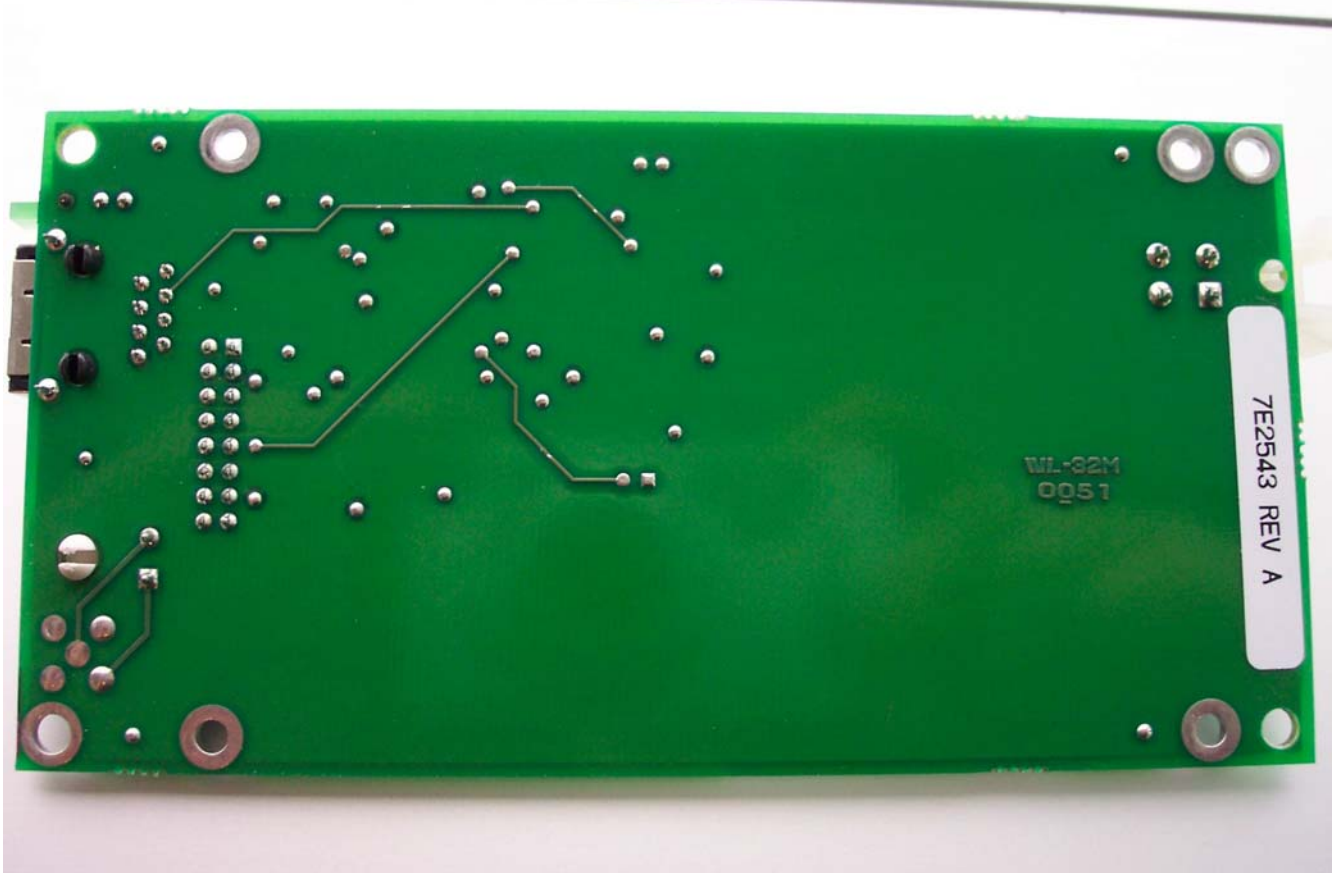




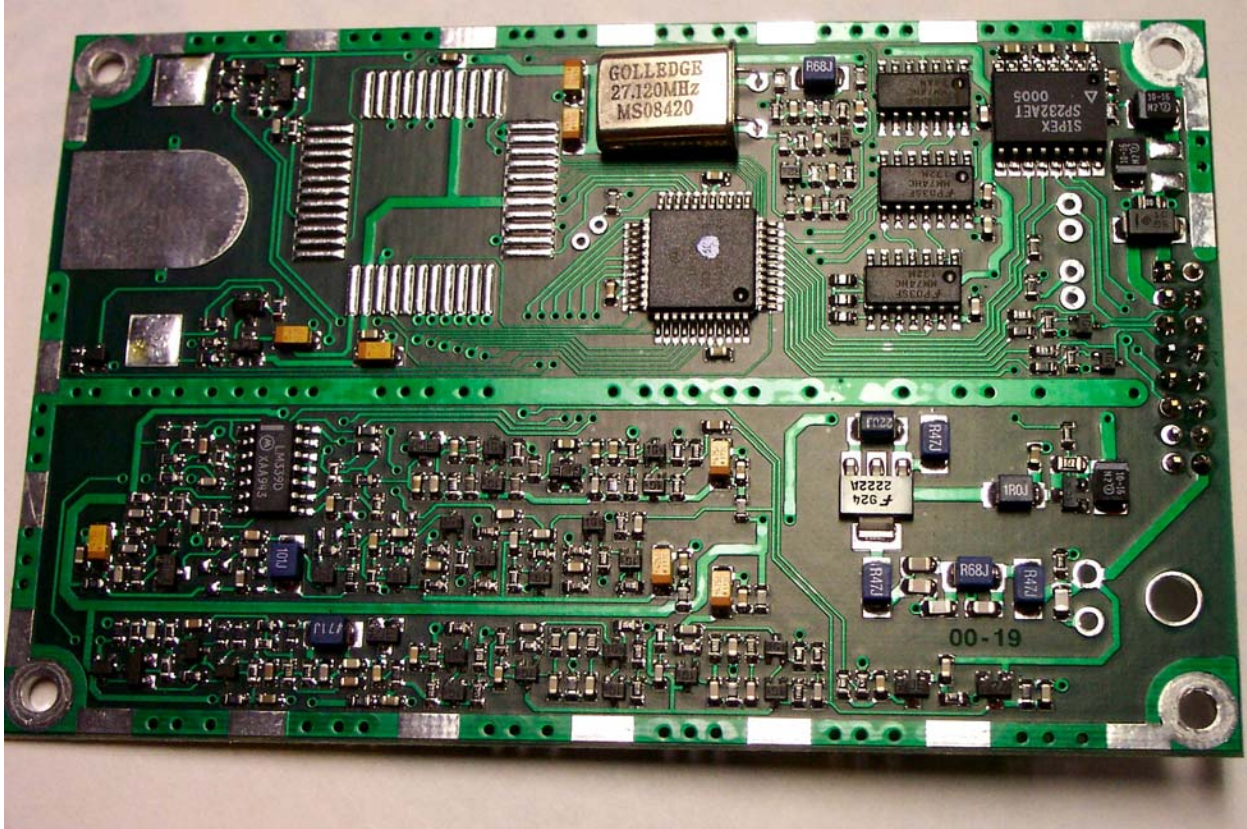
8150 Disassembly - RF Tag Board, Top - close-up of component



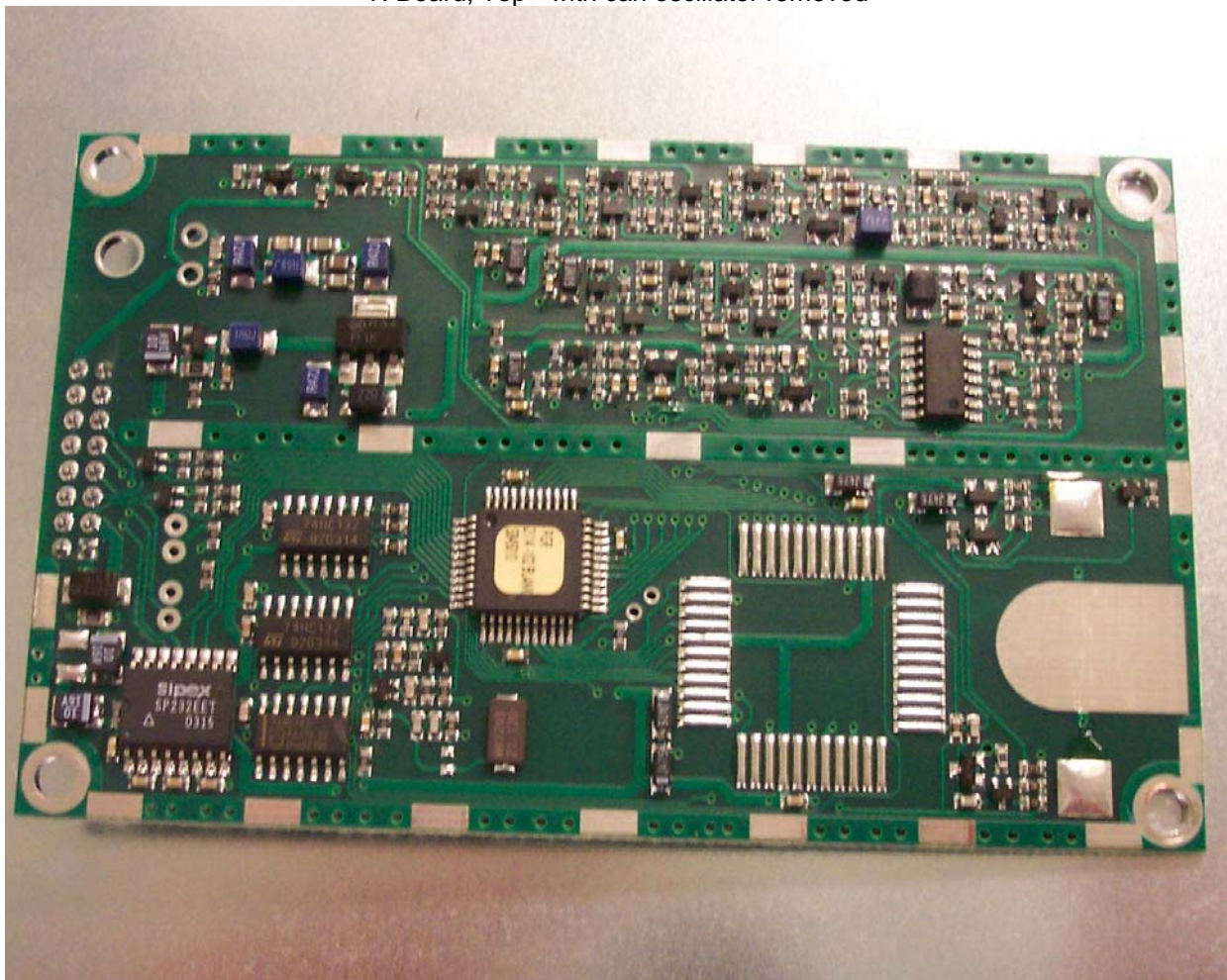
RF Tag Board, Bottom



TI Board, Top



TI Board, Top - with can oscillator removed



TI Board, Bottom

