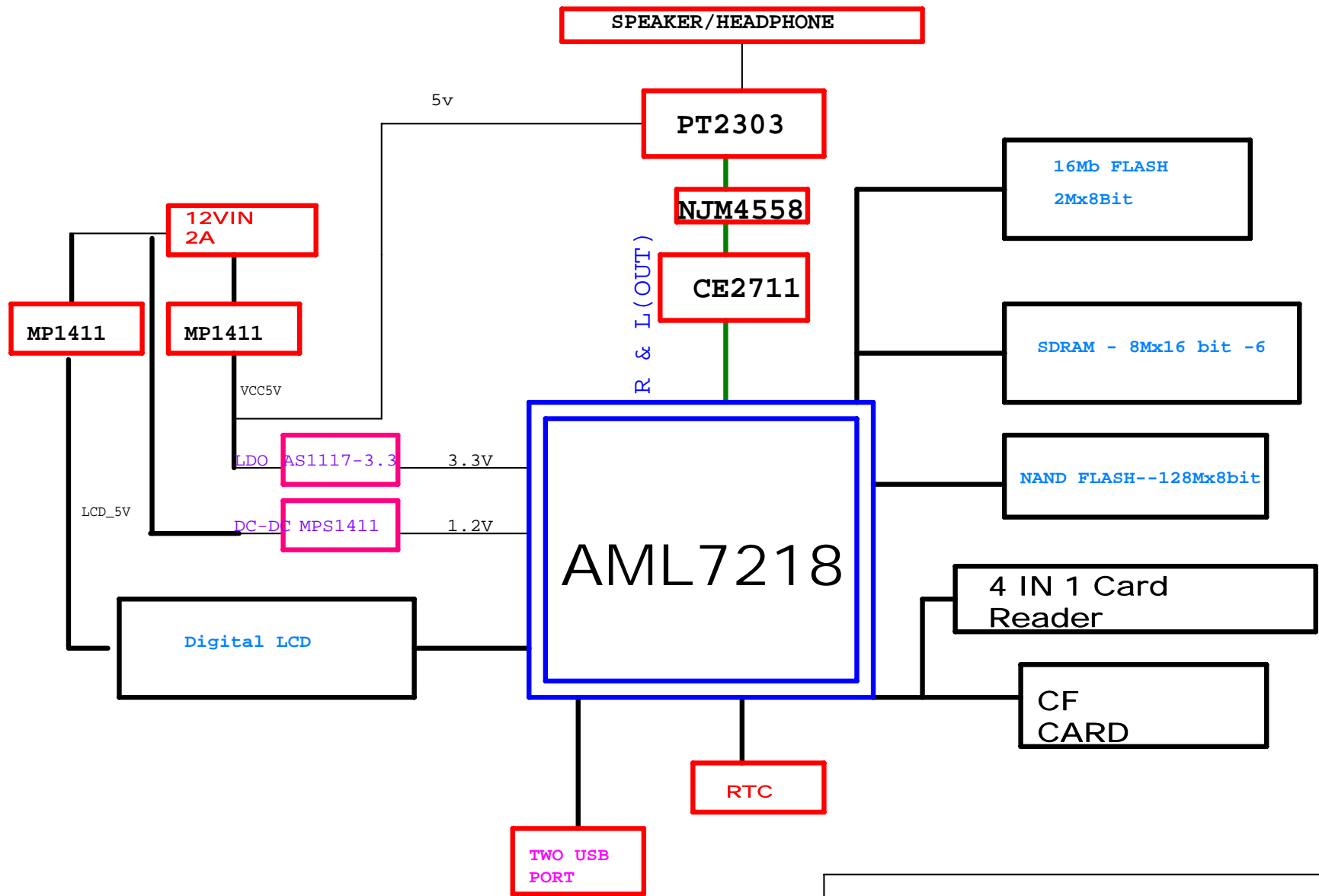
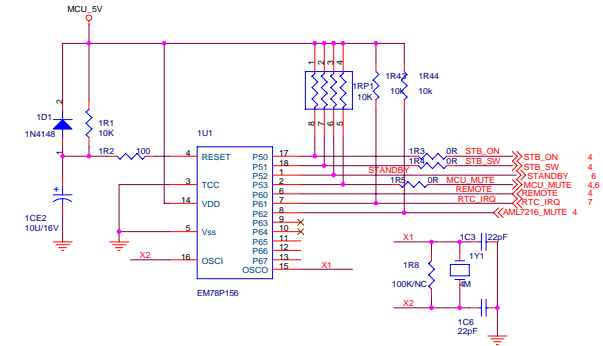
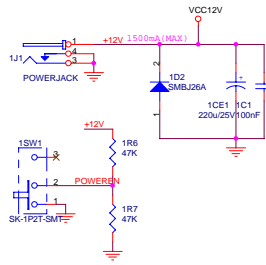
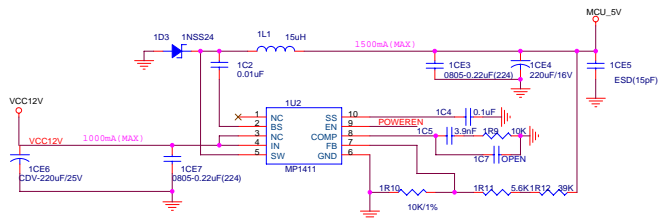


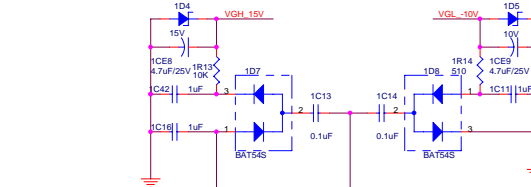
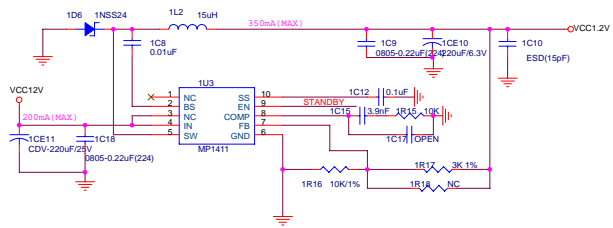
Title		
<Title>		
Size	Document Number	Rev
A	<Doc>	<RevCode>
Date:	Tuesday, November 21, 2006	Sheet 1 of 7



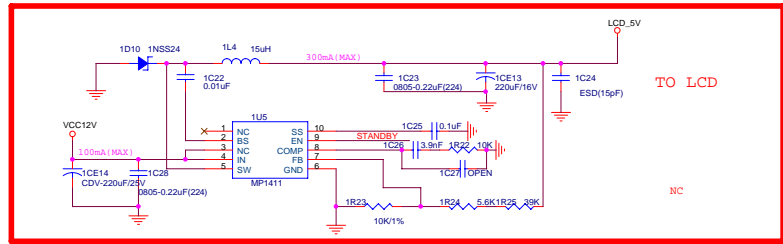
Title		
<Title>		
Size	Document Number	Rev
A	<Doc>	<RevCode>
Date:	Tuesday, November 21, 2006	Sheet 1 of 7



- STB_ON 4
- STB_SW 4
- STANDBY 8
- MCU_MUTE 4,6
- REMOTE 7
- RTC_IRQ 4
- AML216_MUTE 4

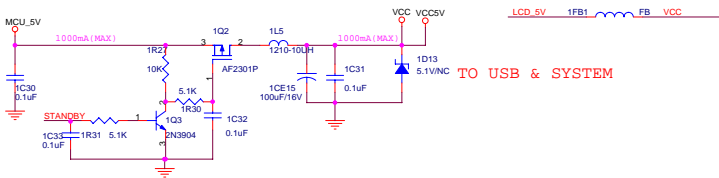


- MCU_5V 4,6
- VCC1.2V 6,7
- VCC 3
- DP_3.3V 3
- VCC_10V 3
- VGH_15V 3
- VGL_-10V 3
- VGL_10V 4
- +15V_CTL 3
- BL_EN 4

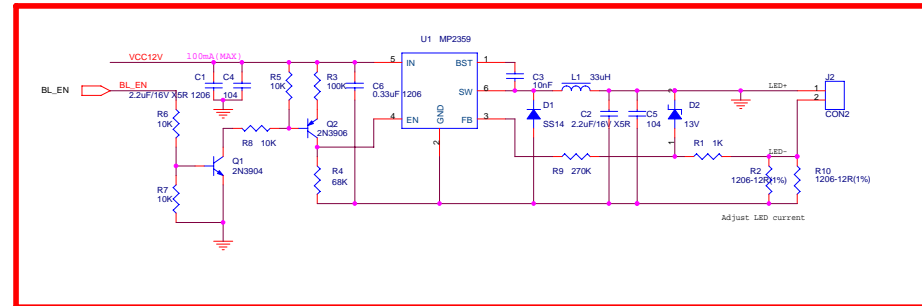


TO LCD

NC

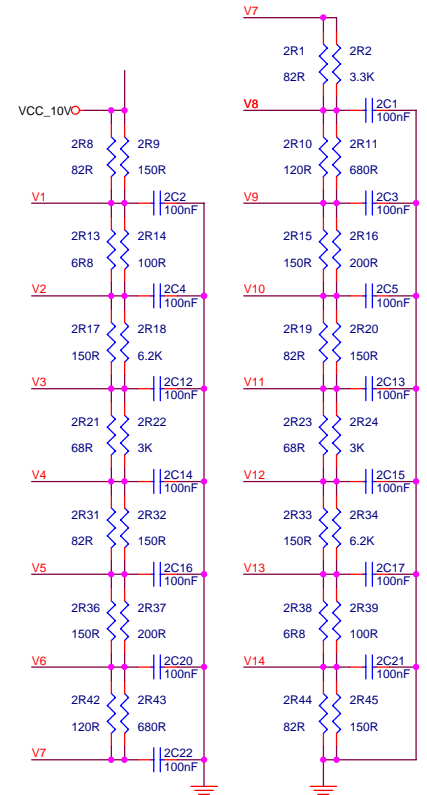
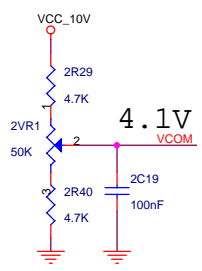
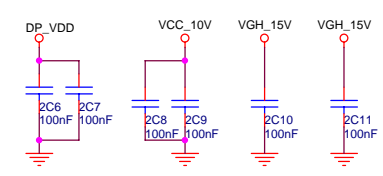
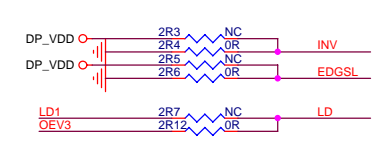
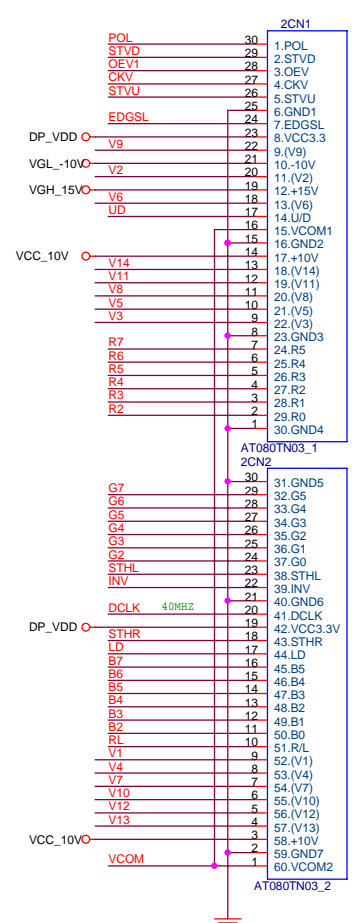
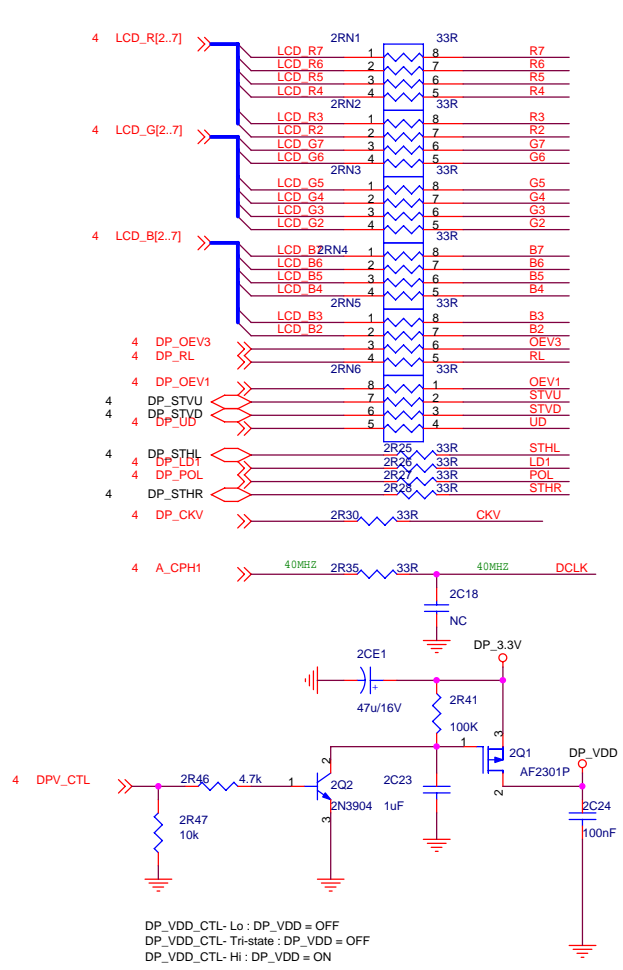


TO USB & SYSTEM

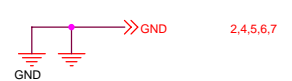


GND 4,5,6,7

Title			
<Title>			
Size	Document Number	Rev	
A2	<Doc>	<Rev>	<Code>
Date: Tuesday, November 21, 2006 Sheet 2 of 7			

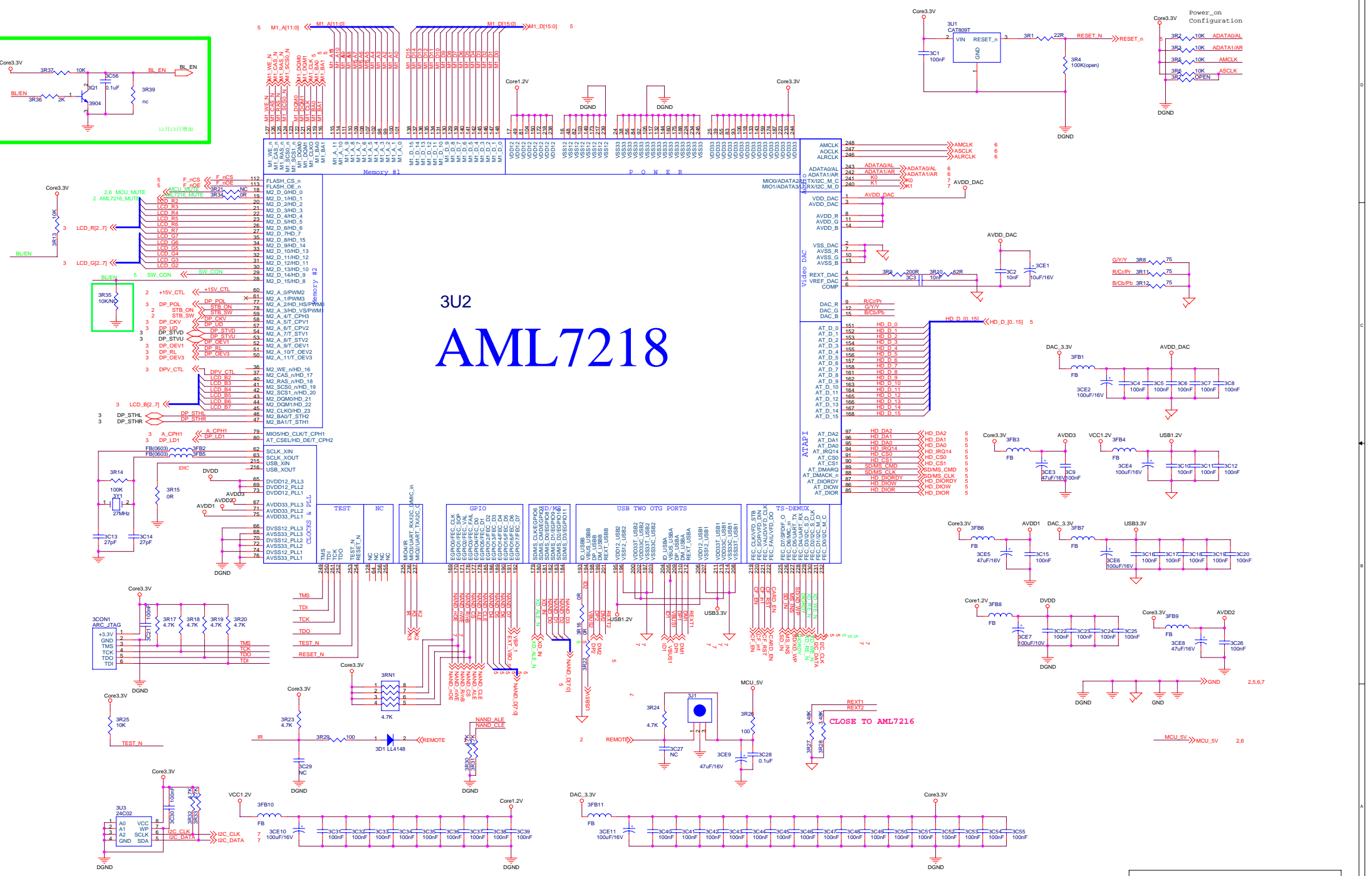


- VCC_10V >> VCC_10V 2
- VGH_15V >> VGH_15V 2
- VGL_-10V >> VGL_-10V 2
- DP_3.3V >> DP_3.3V 2

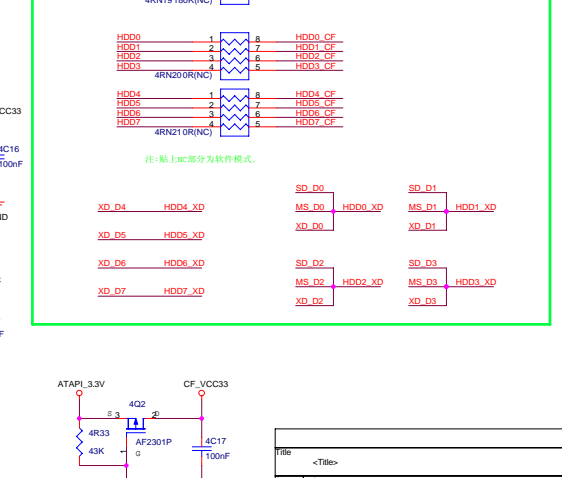
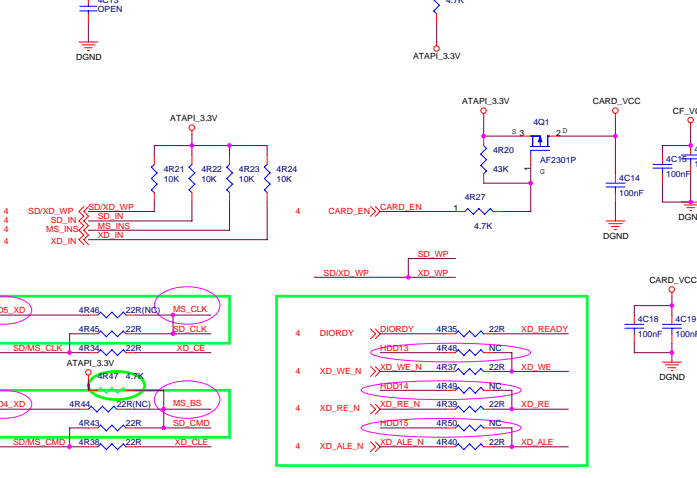
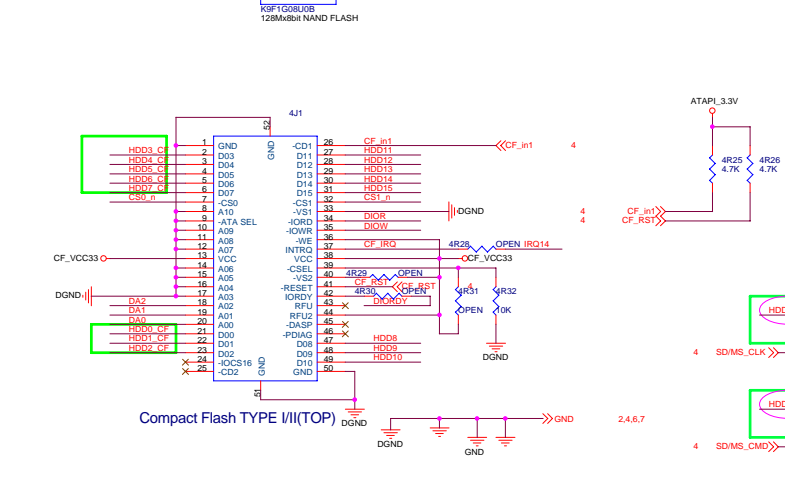
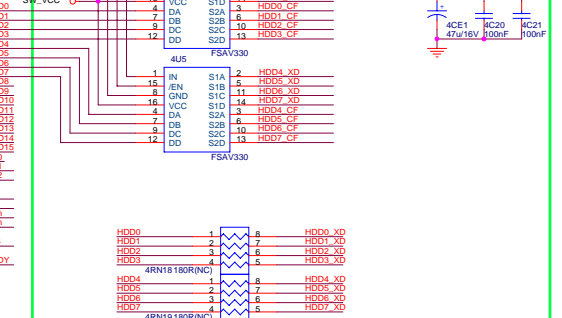
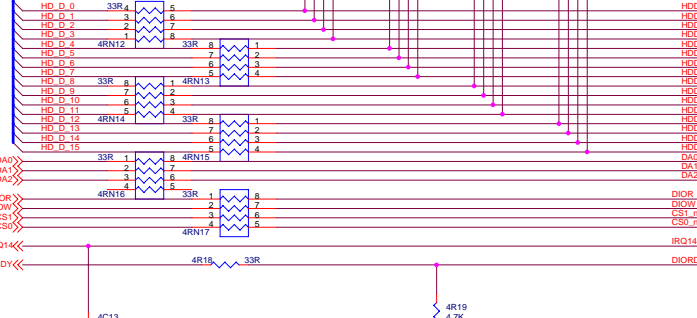
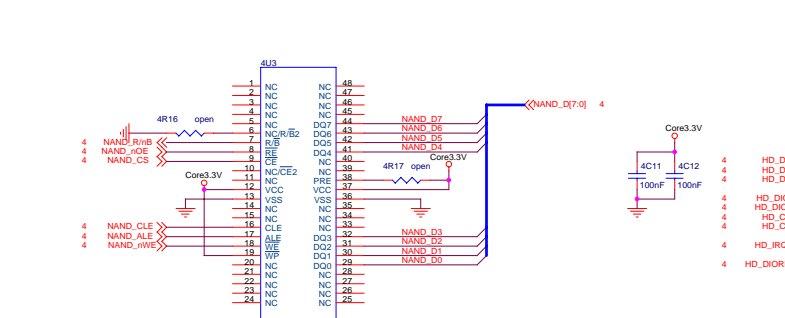
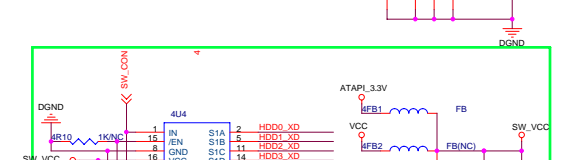
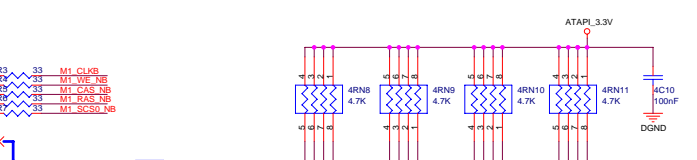
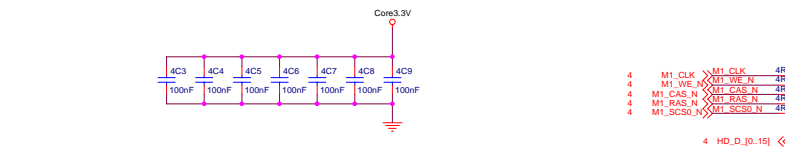
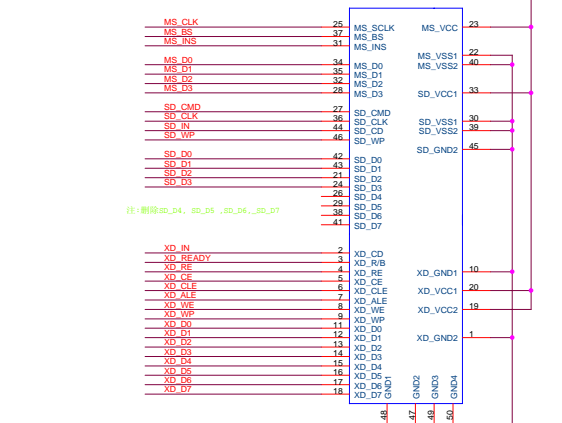
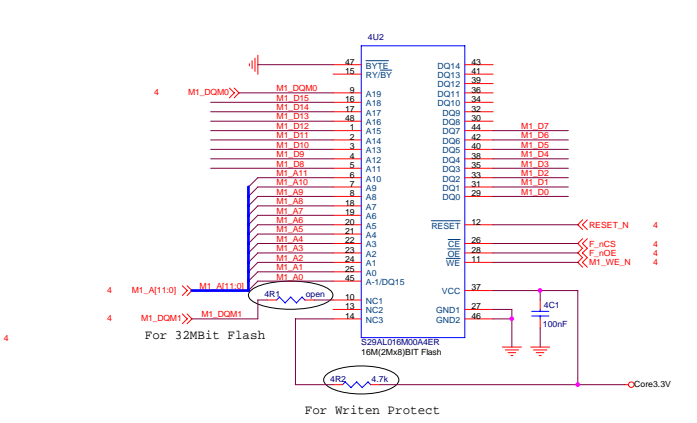
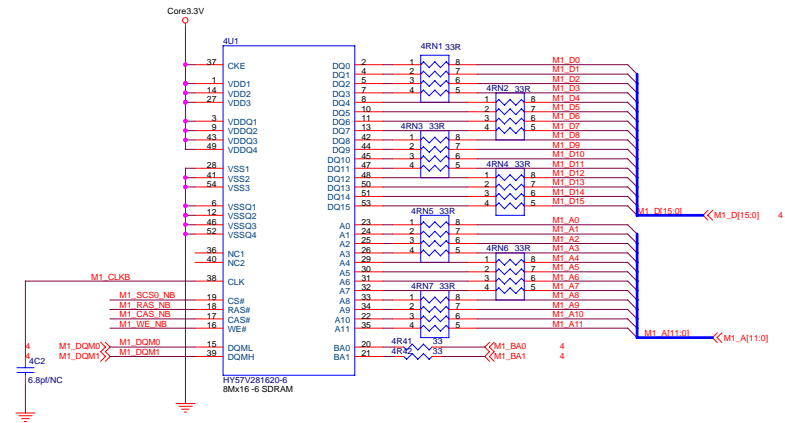


Title		
<Title>		
Size	Document Number	Rev
A3	<Doc>	<RevCode>
Date:	Tuesday, November 21, 2006	Sheet 3 of 7

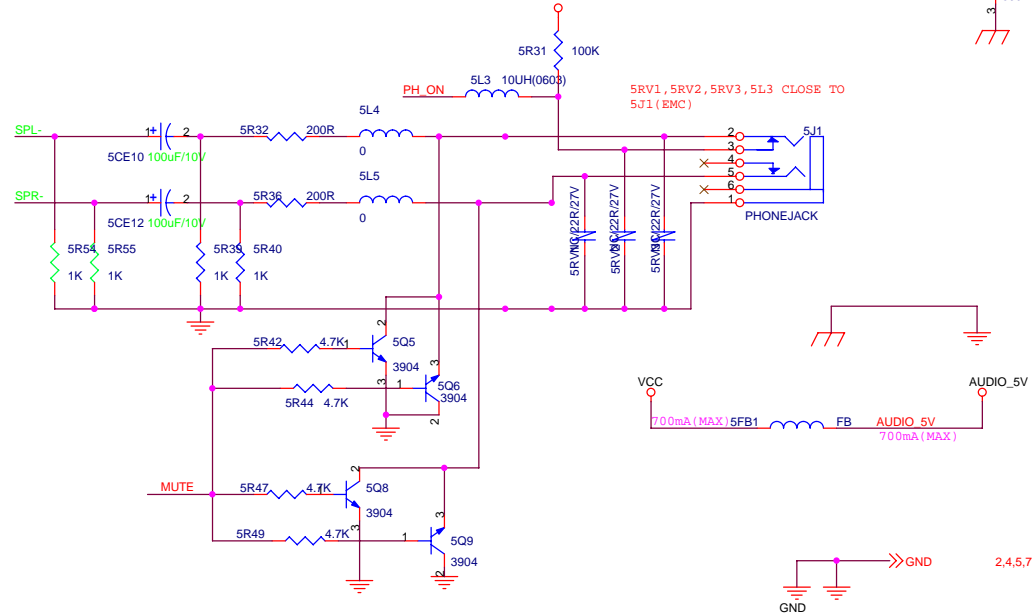
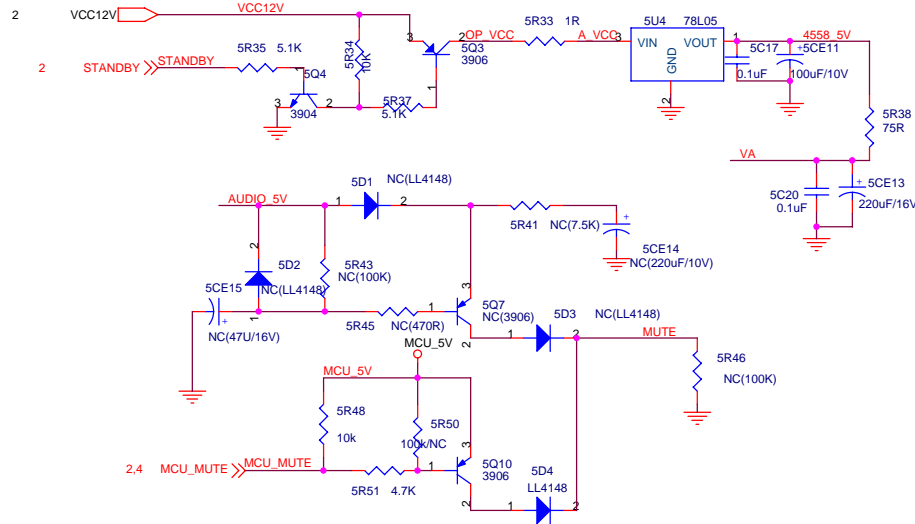
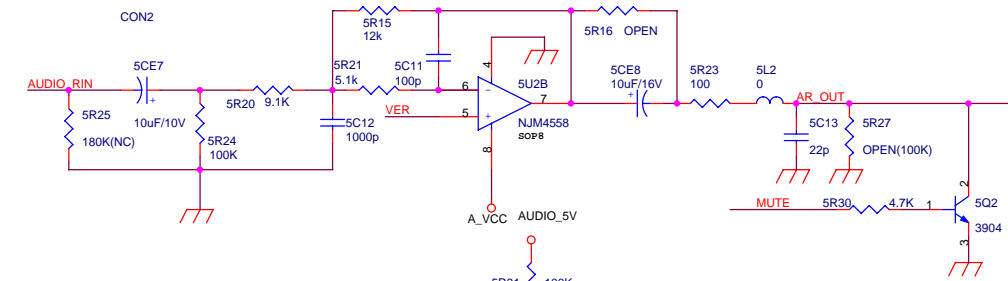
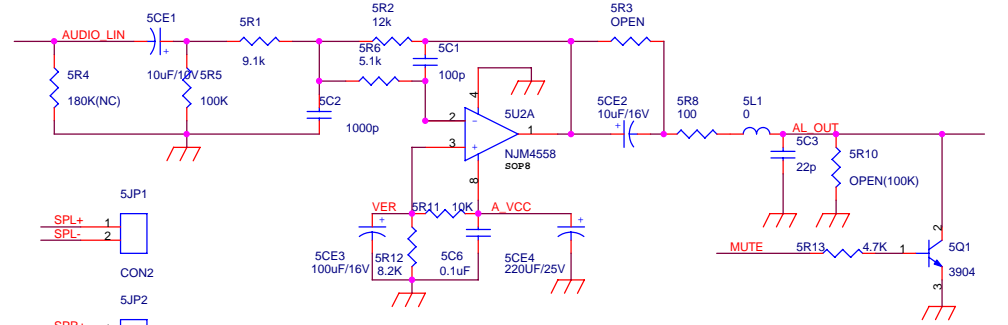
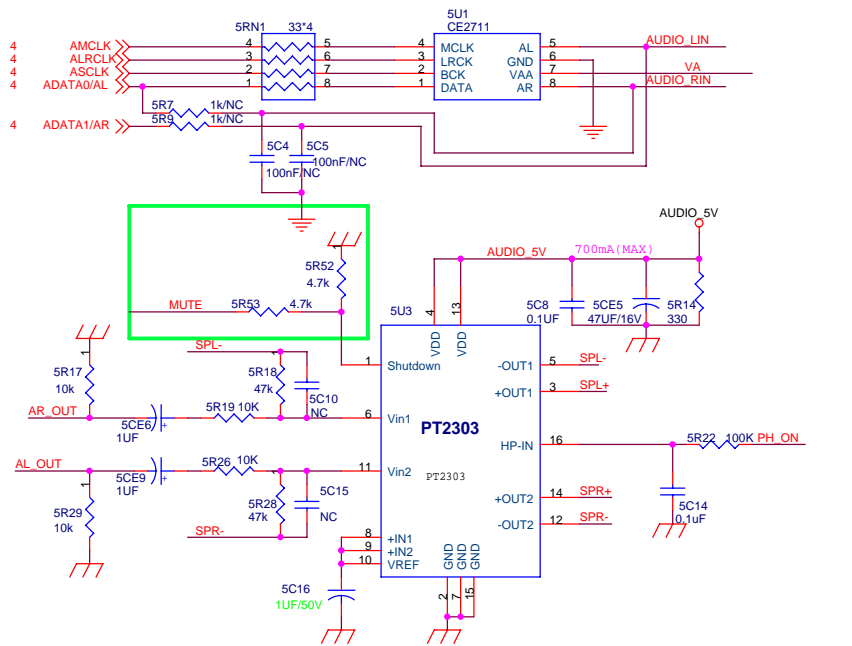
3U2 AML7218



Title			
<Title>			
Size	A2	Document Number	Rev
<Doc>		<Rev Code>	
Date	Tuesday, November 21, 2006	Sheet	4 of 7

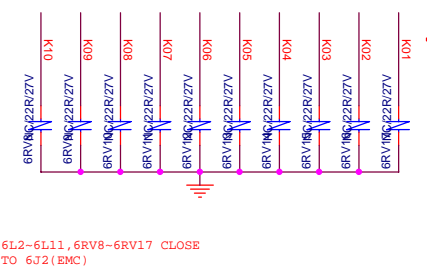
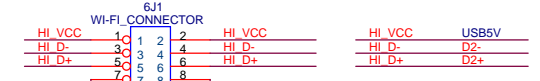
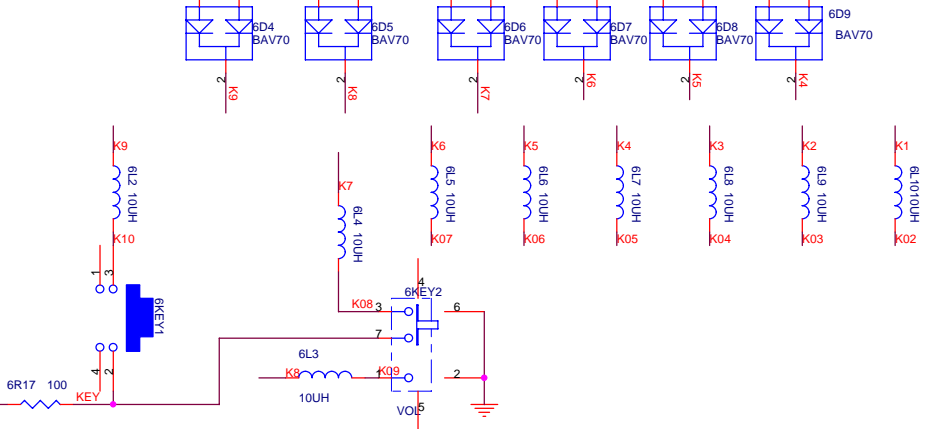
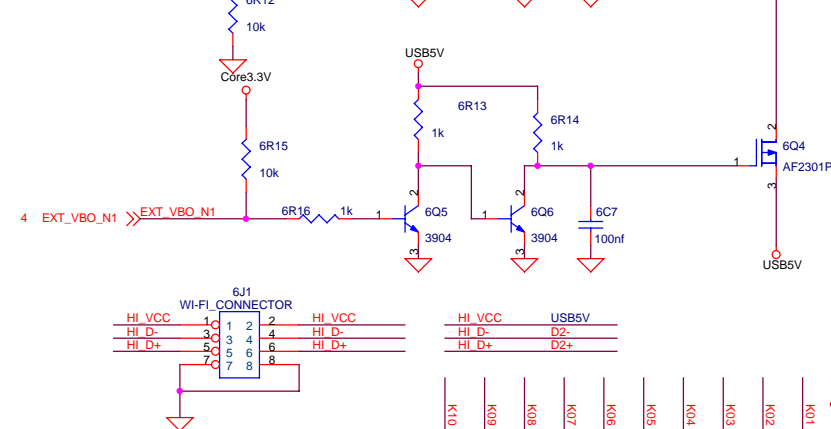
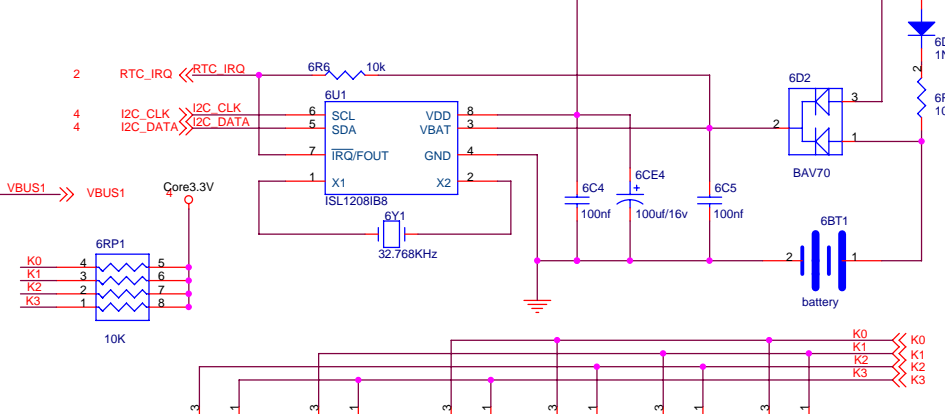
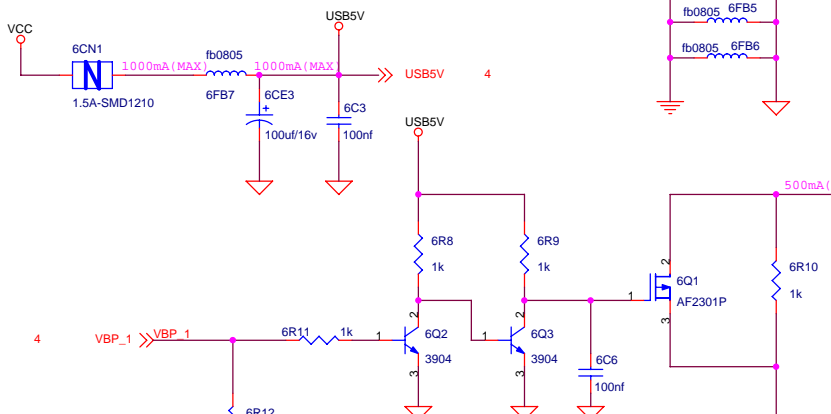
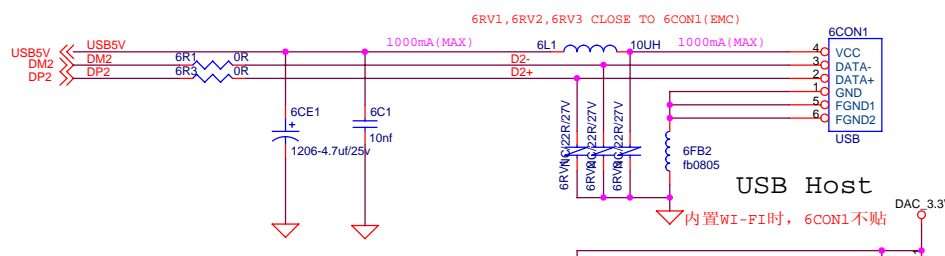
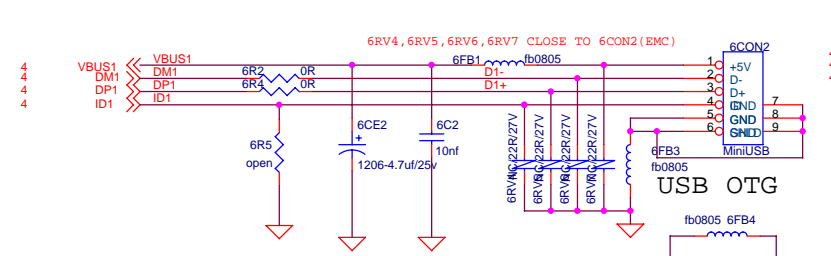


File	<Title>	Rev	<Rev Code>
Size	Document Number		
A2	<Doc>		
Date	Tuesday, November 21, 2006	Sheet	5 of 7

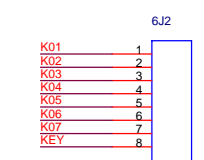


VCC12V >>> VCC12V 2
 VCC >>> VCC 2,5,7
 MCU_5V >>> MCU_5V 2,4

Title		
<Title>		
Size	Document Number	Rev
A3	<Doc>	<RevCode>
Date:	Tuesday, November 21, 2006	Sheet 6 of 7



SCAN INPUT	0111	1011	1101	1110	0011	1001	0101	0110	0101	0001
K01-K2K3	KEY10	KEY9	KEY8	KEY7	KEY6	KEY5	KEY4	KEY3	KEY2	KEY1

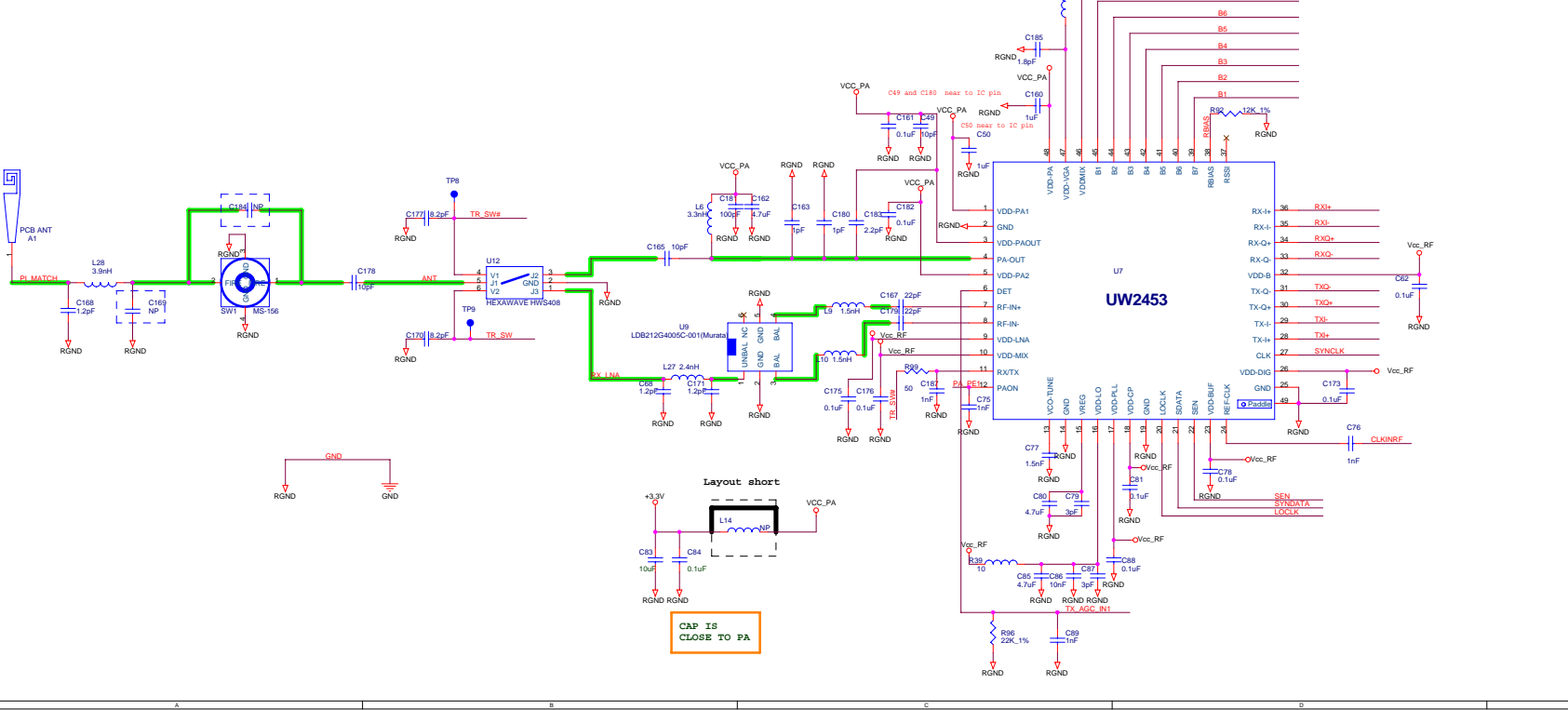
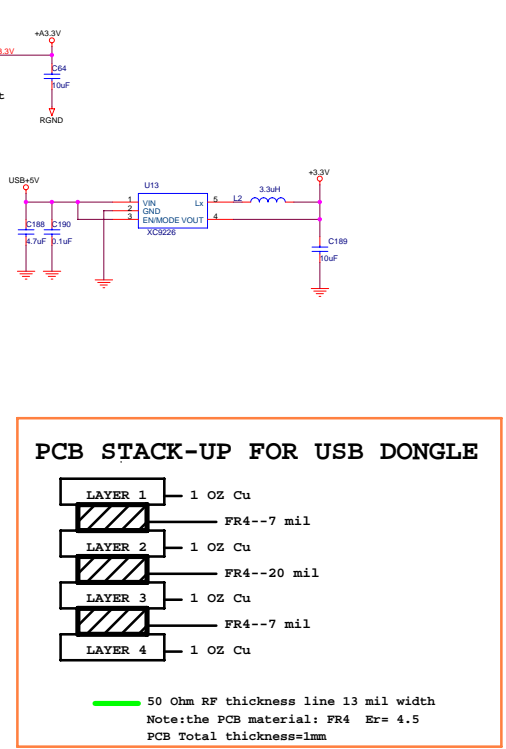
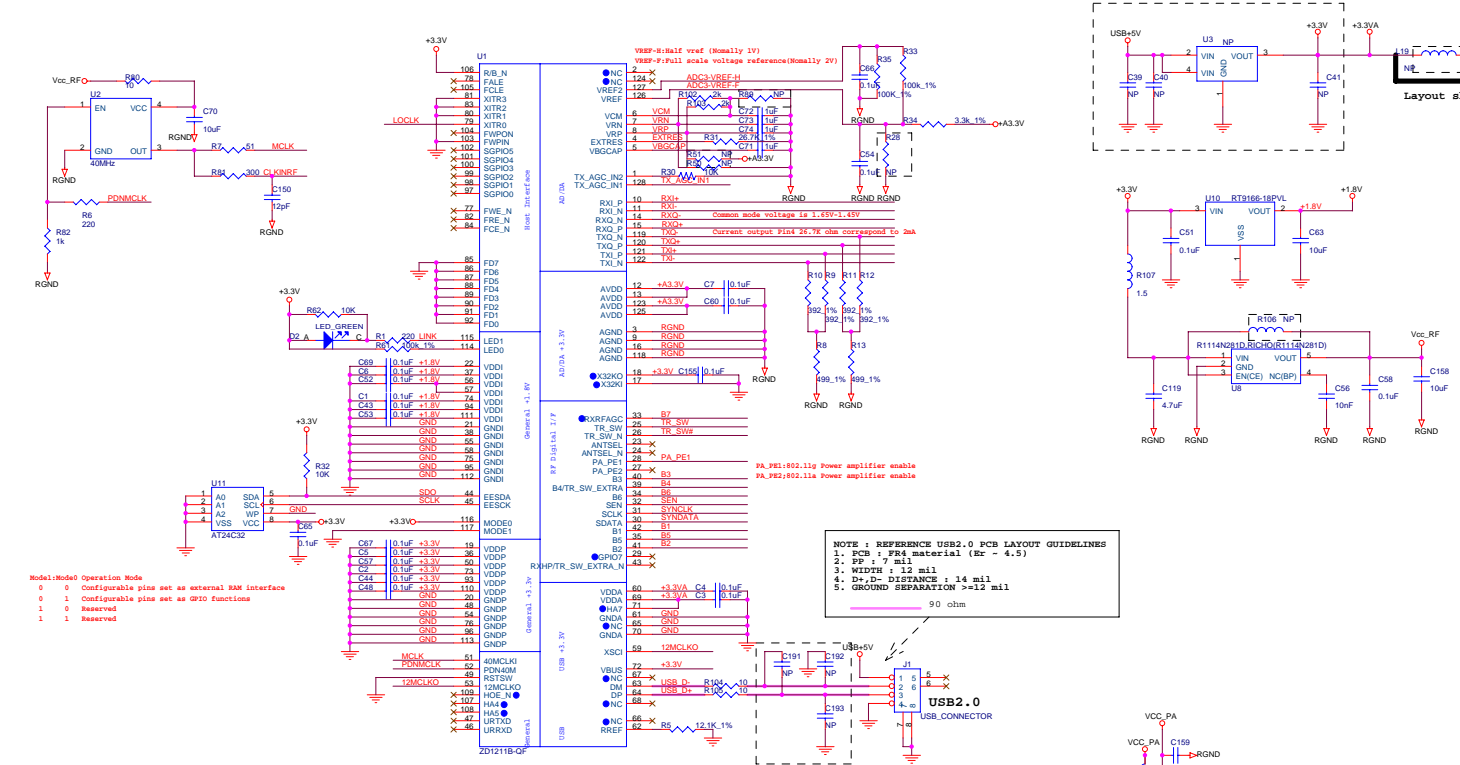


6L2-6L11, 6RV8-6RV17 CLOSE TO 6J2(EMC)

VCC -> VCC 2,5,6

GND -> GND 2,4,5,6

Title			<Title>
Size	Document Number	Rev	
A3	<Doc>	<RevCode>	
Date:	Tuesday, November 21, 2006	Sheet	7 of 7



ZyDAS Technology Corporation		
TITLE:		
DRN:	DWG NO:	
CKD:	REV:	
APPD:	SHEET 1 OF 1	
Amendment History		
Date	Release	Description
2006/05/16	AA00	FIRST DESIGN
2006/06/12	AC01	tune RF performance
2006/07/20	AC02	tune RF performance
Section ALL Circuit		
Size	Document Number	Rev
Custom	45-401-10191AC02	01
Date: Wednesday, October 25, 2006	Sheet 1 of 1	