

## **1. General Information**

<b>Applicant:</b>	Cooper Power Systems
<b>Applicant Address:</b>	20201 Century Boulevard, Suite 250 Germantown, MD 20874 301-515-7118
<b>Product:</b>	RFN420fL-G21 (L+G Focus)
<b>FCC ID:</b>	P9X-RFN420FL-G21
<b>IC:</b>	6766A-RFN420FLG21

## **2. General**

### **2.1. Location**

The label must be applied to the meter in a place where it will be easily visible. The label should be applied so that all vertical and/or horizontal markings can be read in the same direction as other labels on the meter.

### **2.2. Markings**

All human readable markings must be clear and legible when viewed with normal vision at a distance of twelve inches.

### **2.3. Permanency**

The label shall not be a stick-on, paper label, and must be permanently affixed to the product. The label must be designed to last the expected lifetime of the equipment in the environment in which the equipment may be operated and must not be readily detachable.

## **3. Contents of the Label**

The label must contain the following information:

- FCC Identifier – the FCC identifier for the RFN420fL-G21, P9X-RFN420FL-G21
- IC Number – the Industry Canada certification number for the RFN420fL-G21, 6766A-RFN420FLG21
- Model Number – the model number, RFN420fL-G21, must appear on the label.

- Manufacturer Name: the name of the manufacturer, Cooper Power Systems, must appear on the label
- FCC Information – the following statement should appear on the label or in the installation manual:

*This device complies with part 15 of the FCC Rules. Operation is subject to the following conditions: (1) this device may not cause harmful interference, and (2) this device must accept any interference received including interference that may cause undesired operation.*

Examples of labels are shown below. The example in Figure 1 shows a label with the required FCC information and both the FCC Identifier and the IC certification number. The example in Figure 2 shows a label with just the FCC Identifier on it and the IC certification number. The required FCC information would appear in the installation manual.

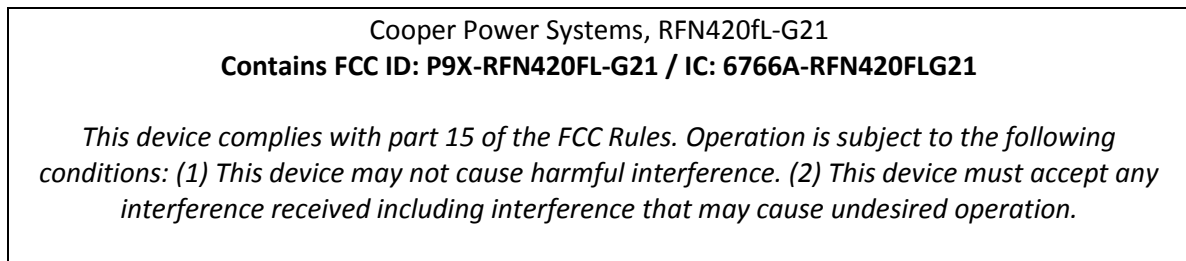


Figure 1: Label Example with FCC and IC Information

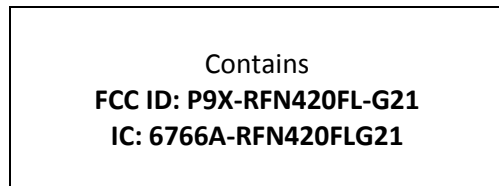


Figure 2: Label Example with FCC Information appearing in the installation manual

A label showing the manufacturer's name (Cooper Power Systems), the FCC ID (P9X-RFN420FL-G21), and the IC Number (6766A-RFN420FLG21), and containing the information shown in Figure 1 below, will be affixed to products that incorporate the RFN420fL-G21, as shown in Figure 2.

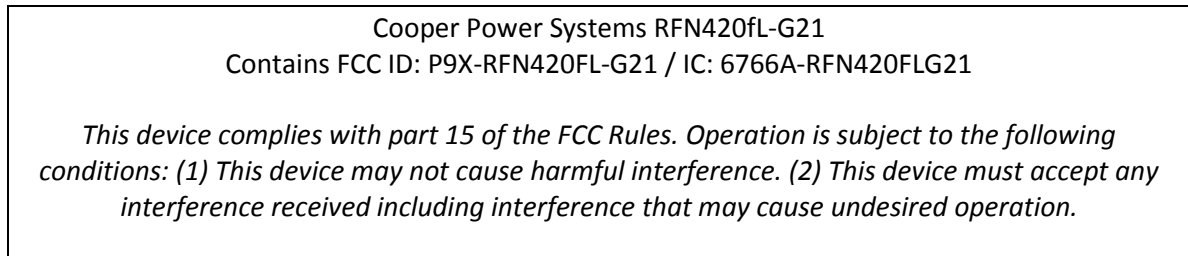


Figure 1: External Label Information



Figure 2: External Label Location

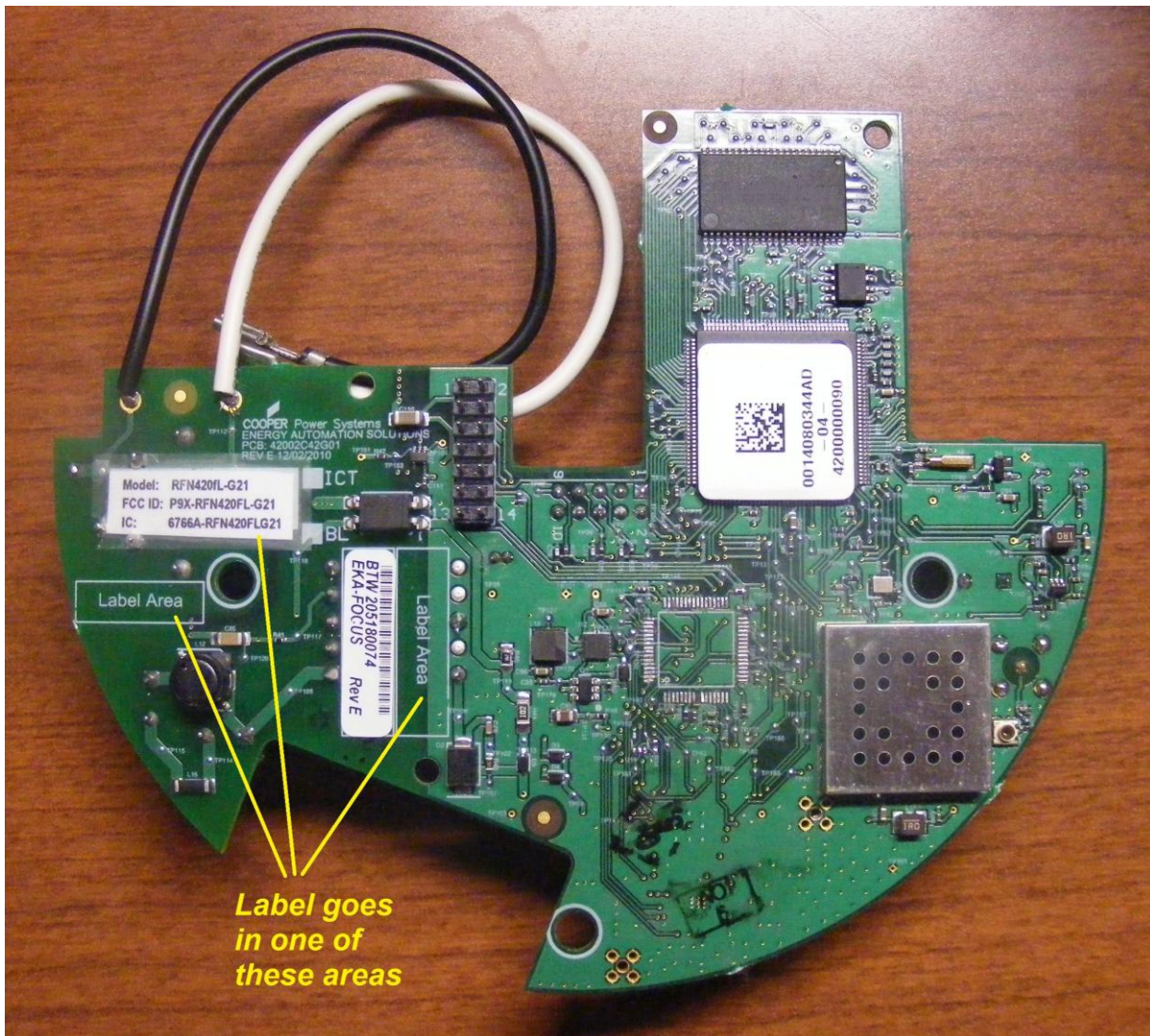


Figure 1: RFN420fL-G21 - Top



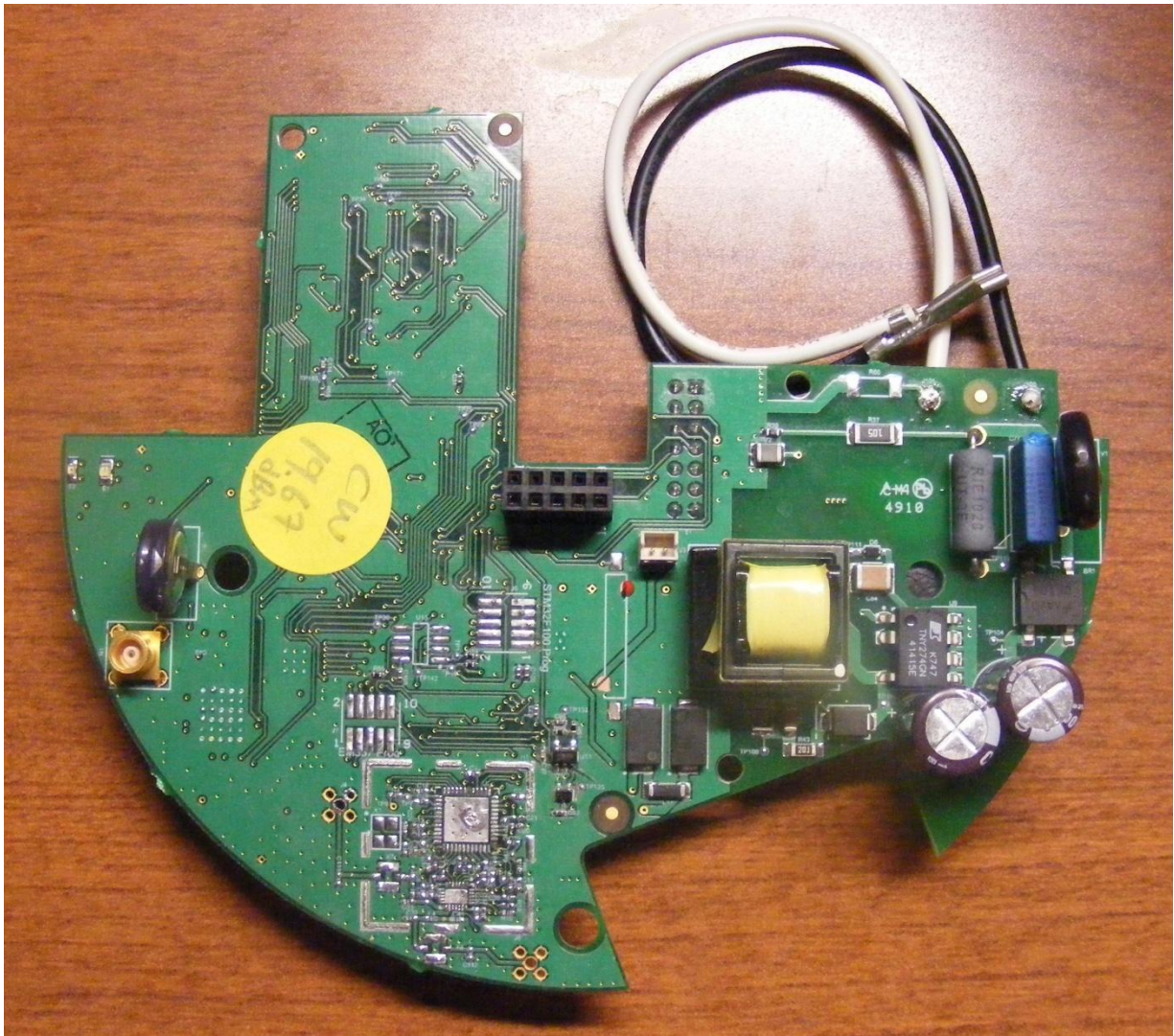


Figure 1: RFN420fL-G21 - Bottom