

# **SOHO - DVR**

## *User's Manual*

Digital Video Recording System

**PHIL TERA**

Design for multimedia & communication

## ***PDV-S100 – User Manual***

Information to user : PART 15, PARAGRAPH 15.21 AND 15.105(b)

Changes or modifications not expressly approved by the party responsible for compliance could void the user's authority to operate the equipment

### **FCC Notice**

NOTE : This equipment has been tested and found to comply with the limits for a Class B digital device, pursuant to Part 15 of the FCC Rules. These limits are designed to provide reasonable protection against harmful interference in a residential installation. This equipment generates, uses and can radiate radio frequency energy and, if not installed and used in accordance with the instructions, may cause harmful interference to radio communications. However, there is no guarantee that interference will not occur in a particular installation. If this equipment does cause harmful interference to radio or television reception, which can be determined by turning the equipment off and on, the user is encouraged to try to correct the interference by one or more of the following measures:

- Reorient or relocate the receiving antenna.
- Increase the separation between the equipment and receiver
- Connect the equipment into an outlet on a circuit different from that to which the receiver is connected.
- Consult the dealer or an experienced radio/TV technician for help.

## Chapter 3 SOFTWARE SYSTEM

### I. MAIN FUNCTIONS AND FEATURES

**A) Operating System-** PHILTERA runs on Windows 98,SE,ME,2000 operating system.

#### **B) PHILTERA Software**

- Multi site, multi screen display and search
- Backup saved images to external media
- Built In Digital Motion Detection – Setup detection area
- Built in Pan/ Tilt / Zoom controls
- Remote viewing via PSTN, LAN, or Internet (Optional)
- SPOT Monitoring - NTSC monitor output of all cameras in sequence
- Image enhancement functions

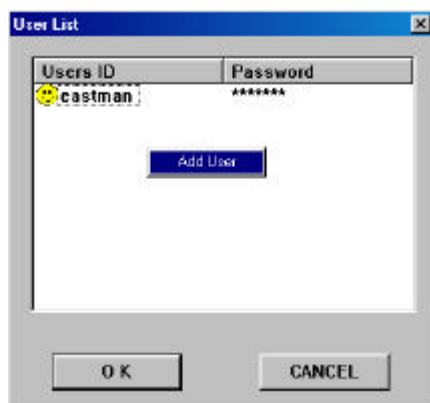
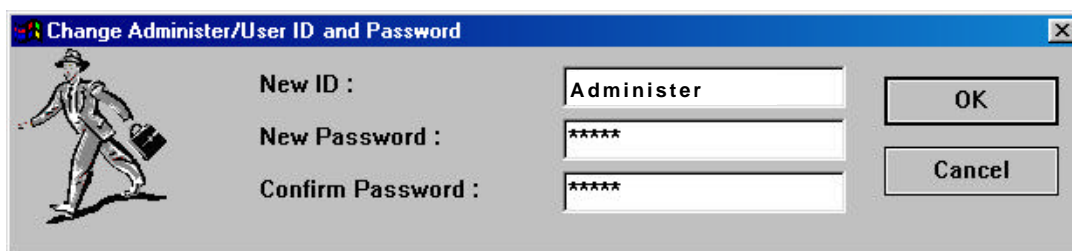
## II. USER MANAGEMENT – Setup Password

PHILTERA system can be password protected when accessing TOOLS and SEARCH areas.

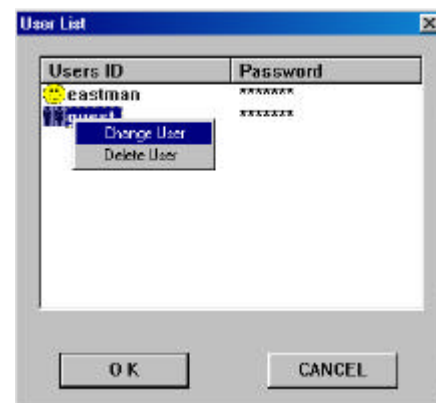


Default ID and PW:  
 ID : Administer  
 PASSWORD : Admin

Before exiting, change the default settings to your customized ID and password by clicking on "USER MANAGER" button.



Right click in open space to add new users



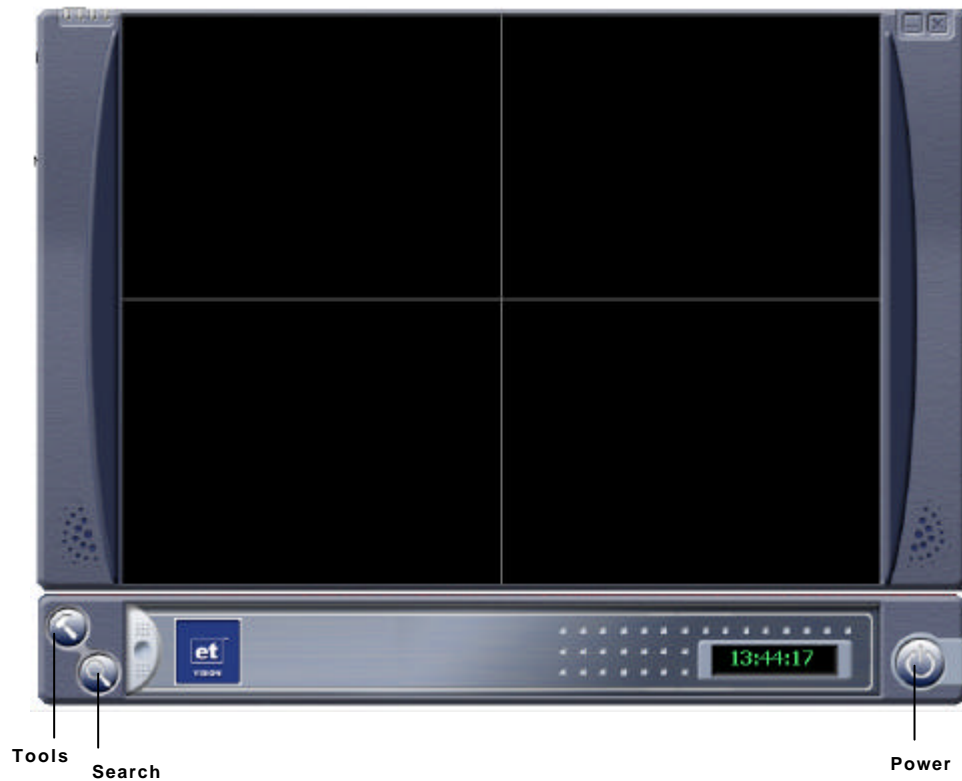
Right click on existing user to change ID & Password

### KEY:

ID must be between 4 ~ 20 characters alphanumeric

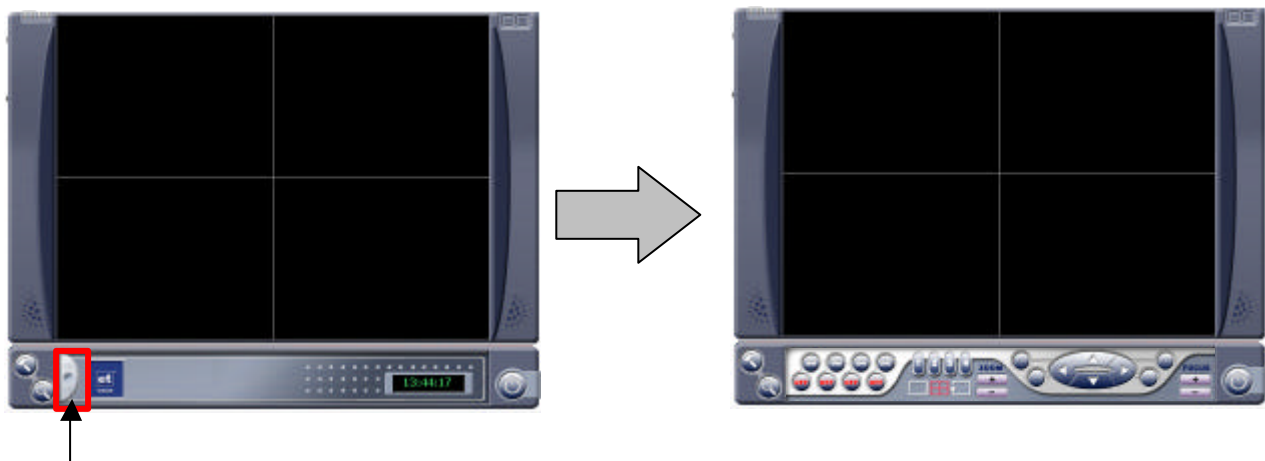
Password must be between 5 ~ 8 characters alphanumeric

### III. MAIN MONITORING AND RECORDING SOFTWARE











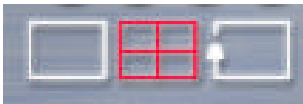

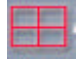








PHILTERA's main monitoring screen will have a four screen view with the Tools button, Search button and Power button for direct view.

\* The hidden functions of PHILTERA



Click here with left button on the mouse to view PTZ and operation menu.

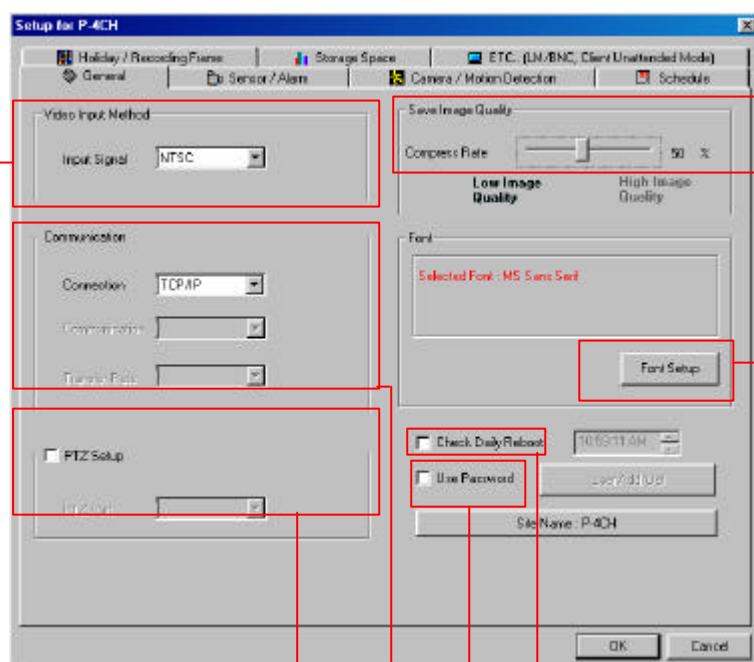
Click right mouse button on any point of menu to return to basic screen.

Function Menu	Key	Usage
		Flickers when Motion or Sensor is detected
		Hide Screen
		Close Program
		Current Time
		Power Button
		Tools Button
		Search Button
		Single Screen View
		Four Screen View
		Single Screen View Rotation
		External Signal Output ON
		External Signal Output OFF
		Pan/Tilt Zoom Control
		Pan/Tilt Focus Control
		Pan/Tilt Camera Selection

## IV. TOOLS SCREEN – SETUP MENU

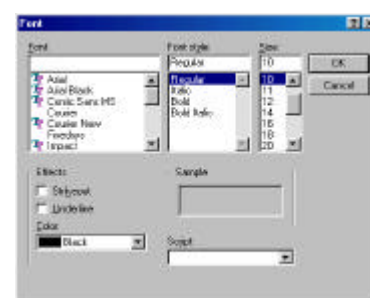
## A) General

- Video Input Method – Choose type of video signal
- Communication – Choose type of connection: PSTN or TCP/IP
- PTZ Setup – Choose PTZ port
- Image Quality – Set image quality
- Font – Change font
- Setup Password – Place check mark to password protect Tools and Search sections



## Setup Image Quality:

Adjust recording image quality.  
Compression rate : 10~100%  
( 50~60% is recommended)



## Font Setup

→ Change font type and color

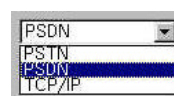


Select video Input signal type

✓ Place check mark here to schedule a reboot time

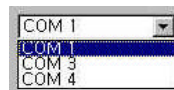
✓ Place check mark here to protect Setup and Search sections and change ID and password .

## Connection Type



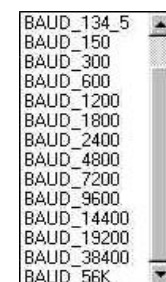
Identify type of network  
<refer to next page>

## Communication Port

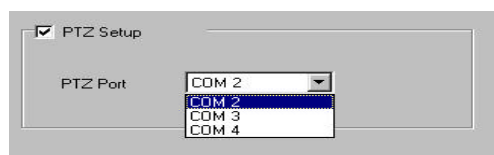


Identify communication port

## Transmission Speed



Change the transmission speed according to the modem type



## PTZ Setup

→ Choose PTZ connection port

### Communication Types

A) PSTN: Choose PSTN when connecting via modem over a regular phone line.



Communication Port : Use the following COM ports:

- Internal Modem: COM3 or COM4.
- External Modem: COM1

**B) PSDN** : Choose PSDN when high speed data modem or ISDN (leased line) modem is available.

**C) TCP/IP** : Choose TCP/IP when connecting via local area network or the Internet.

1. Local Area Network: A static IP address must be assigned to the PHILTERA system to allow remote viewing from another workstation on the LAN.

2. Internet : A Static IP address must be assigned to the PHILTERA system by the ISDN or xDSL provider.

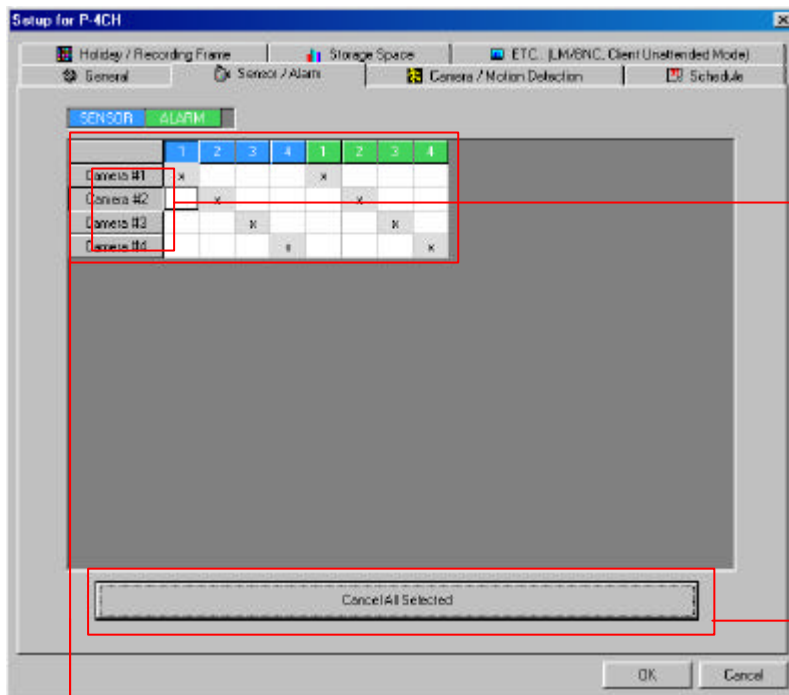
\*\* If you have ADSL service, ask your provider for a "static" IP address.

Static IP is required for the PHILTERA system.



## B) Sensor / Alarm

Use the Sensor/Alarm tab to setup and associate alarm and sensor on the PHILTERA.



Select and edit sensor type & sensor name .

Click to cancel above configuration.

### Example

	1	2	3	4	1	2	3	4
Camera #1	x				x			
Camera #2		x				x		
Camera #3			x				x	
Camera #4				x				

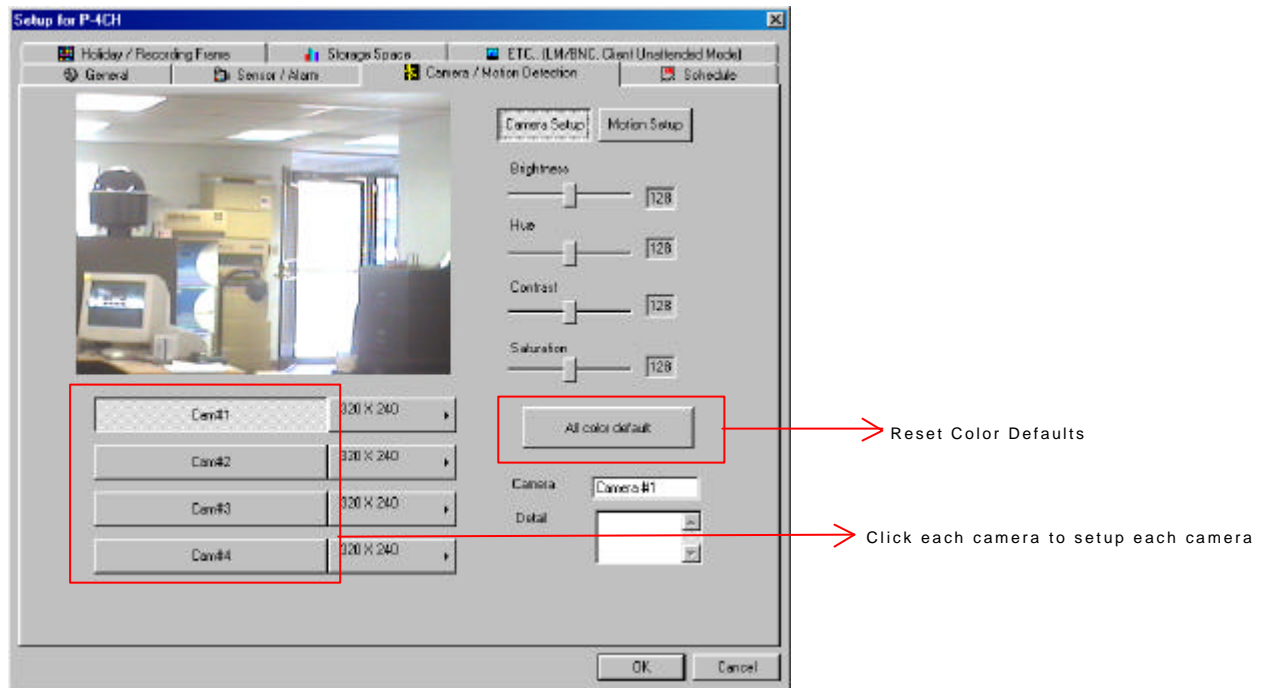
Use the table to configure how the camera and alarm will respond according to the sensor input.

Camera #2 will begin recording images once a signal is received by Sensor#2, AND at the same time, send an alarm to the alarm#2.

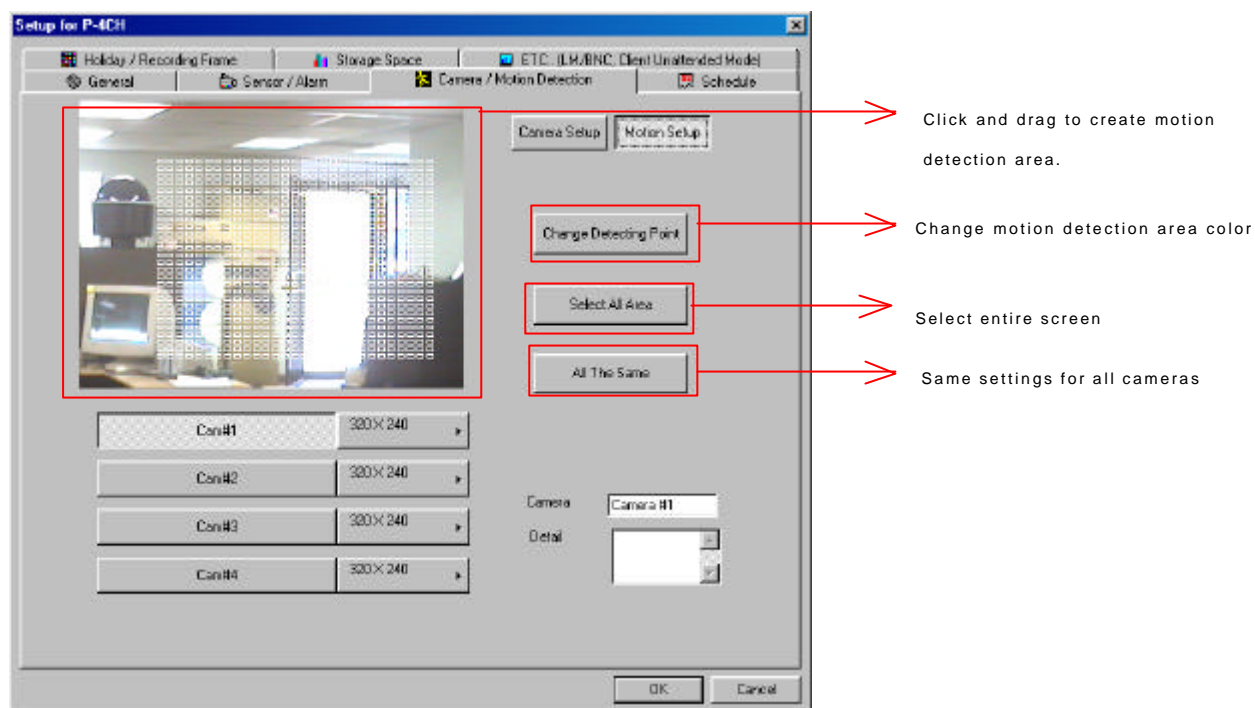
Camera #4 will begin recording images once a signal is received by sensor #4

### C) Camera / Motion Detection

This section indicates the setup of camera input connection, motion detection area, camera name .



User must setup each camera before recording.



## MOTION DETECTION

User must activate “Motion Setup” to use motion triggered recording and alarm notification.

### CHANGE DETECTING POINT:

This function allows user to change the color of the motion detection area.

### SELECT ALL AREA:

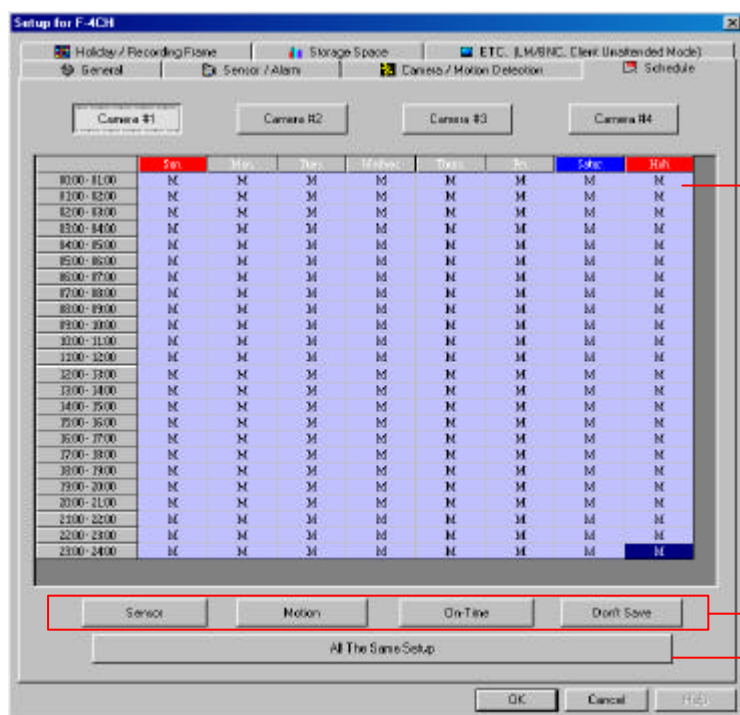
Click to select entire screen for motion detection.

### ALL THE SAME:

Click to use the same settings for all cameras.

## D) Schedule

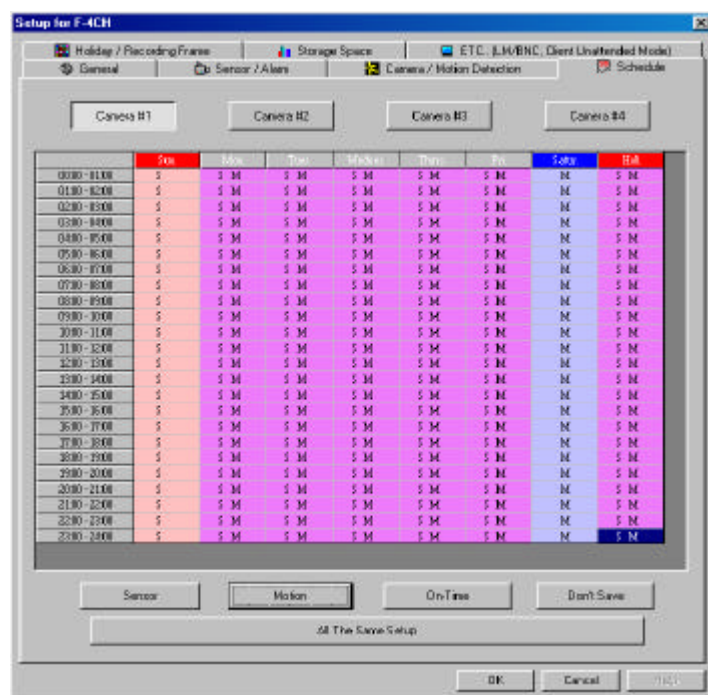
Choose three different recording modes available for each camera, time and day of the week. Click on "ALL THE SAME SETUP" button after configuring the desired recording modes for any given camera. All other cameras will reflect the same schedule.



Click and drag to select the desired cells and then choose one of the recording modes.

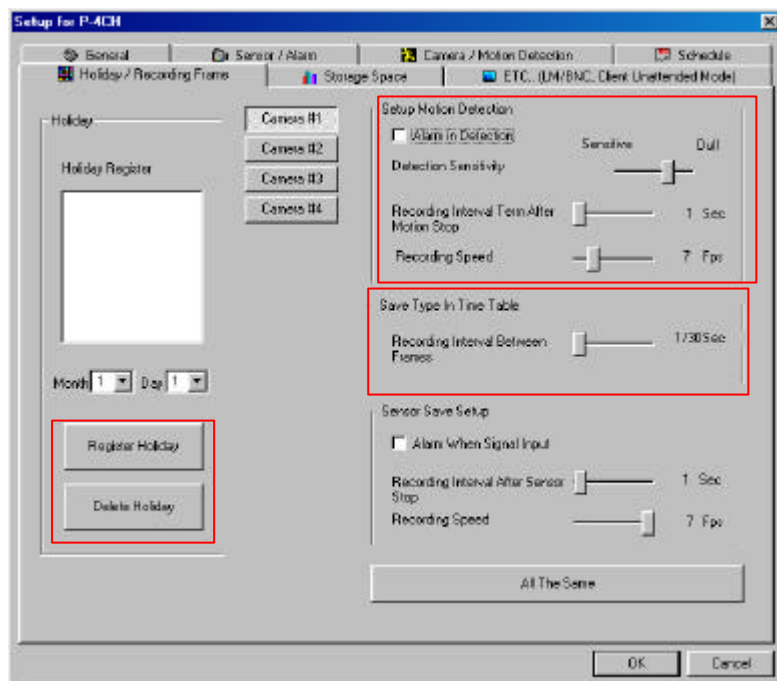
Recording Modes

Click to use the same recording schedule for all cameras.



## E) Holiday / Recording Speed

Setup holiday schedule, motion detection, recording, sensor recording setup etc.



### SETUP MOTION DETECTION

Place check mark here to set off alarm when motion is detected.

Slide bar to increase or decrease motion detecting sensitivity.

When motion is detected recording will begin at the frame rate selected here

Valid range: 1 - 30 frames per second.

This sets how soon after motion is no longer detected that the recording will stop.

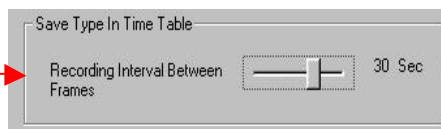
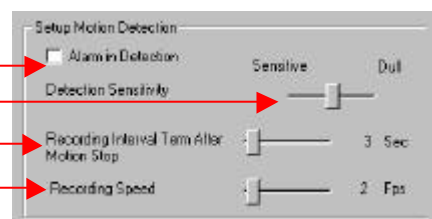
Valid range: 1 - 60 seconds

Sets the recording speed for time lapse recording with no motion detection.

Valid Range: 1/30Sec – 6 minutes

NOTE: In this setting 1/30 = 30fps

30sec = 1 frame every 30 seconds.



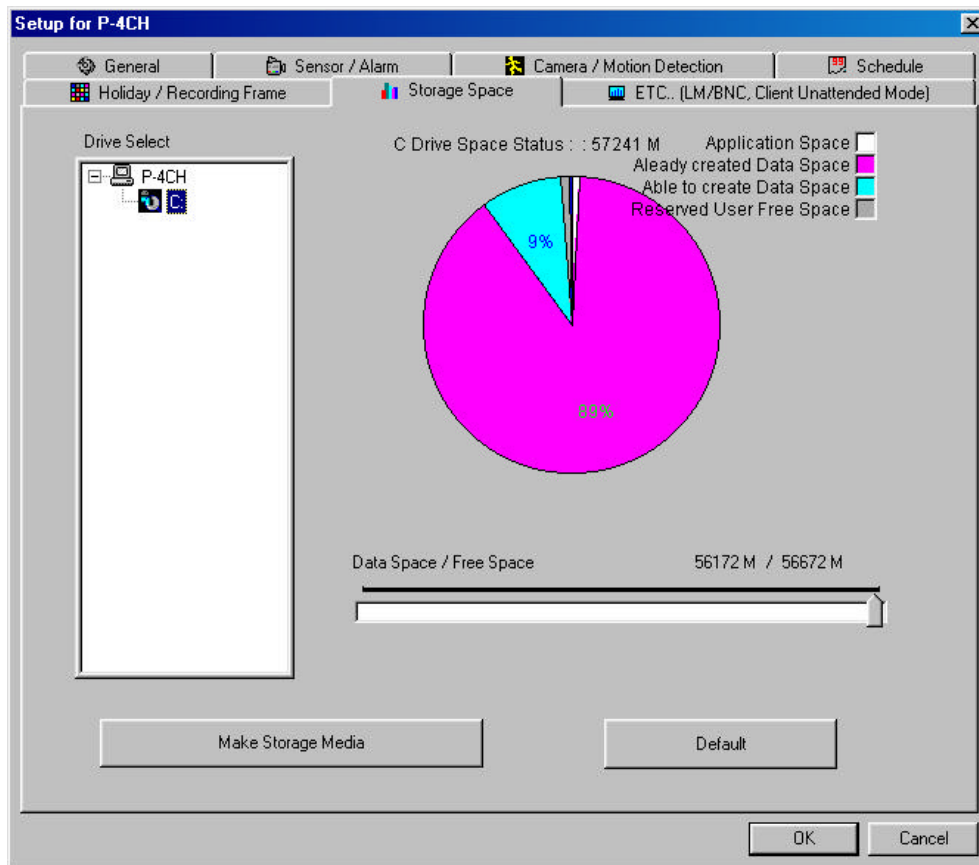
### HOLIDAY

- Register or delete holiday as desired by customer.

### All The Same

- Place check mark here to use same setup for all cameras.

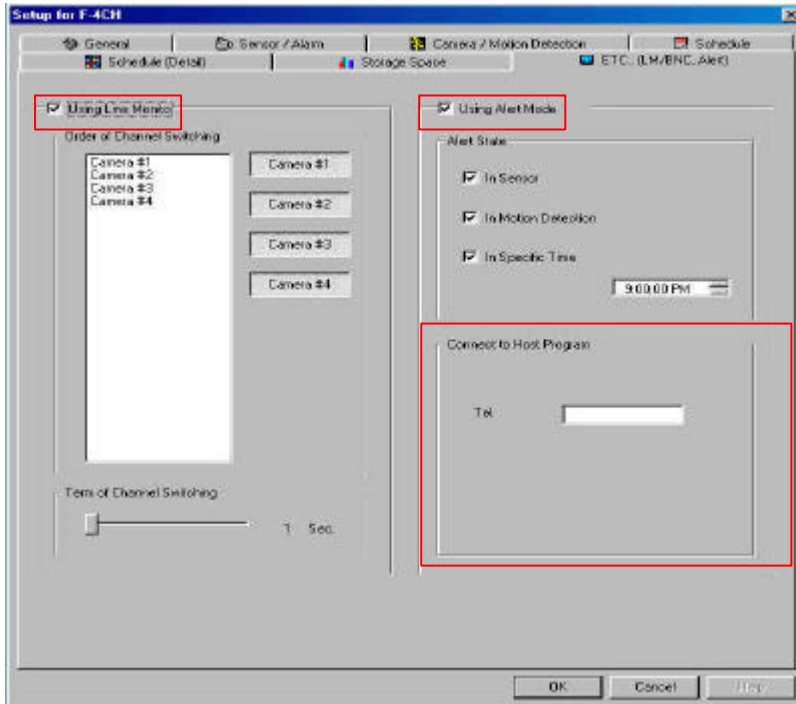
## F) Recording Space



This section is pre-configured on each of the systems and does not need to be changed.

### G) Etc. / Other

Setup the SPOT monitoring output and its interval.



#### Line Monitor

User can see monitoring image of PHILTERA via analog monitor of TV line terminal jack..

After connecting with each camera, each camera is displayed in sequence or can be seen as a full screen image.

Click on each camera in the desired order of switching.

#### ALARM MODE

Remote PHILTERA user will be notified of any sensor or motion trigger as an alarmed event to a remote IP or phone number.

## V. SEARCH SOFTWARE

Searching is made easy with the PHILTERA search program. Multi screen format allows up to 16-camera playback function.

Images can be searched by camera, time and date as needed. Each screen allows options to print and save image to an external Medium.



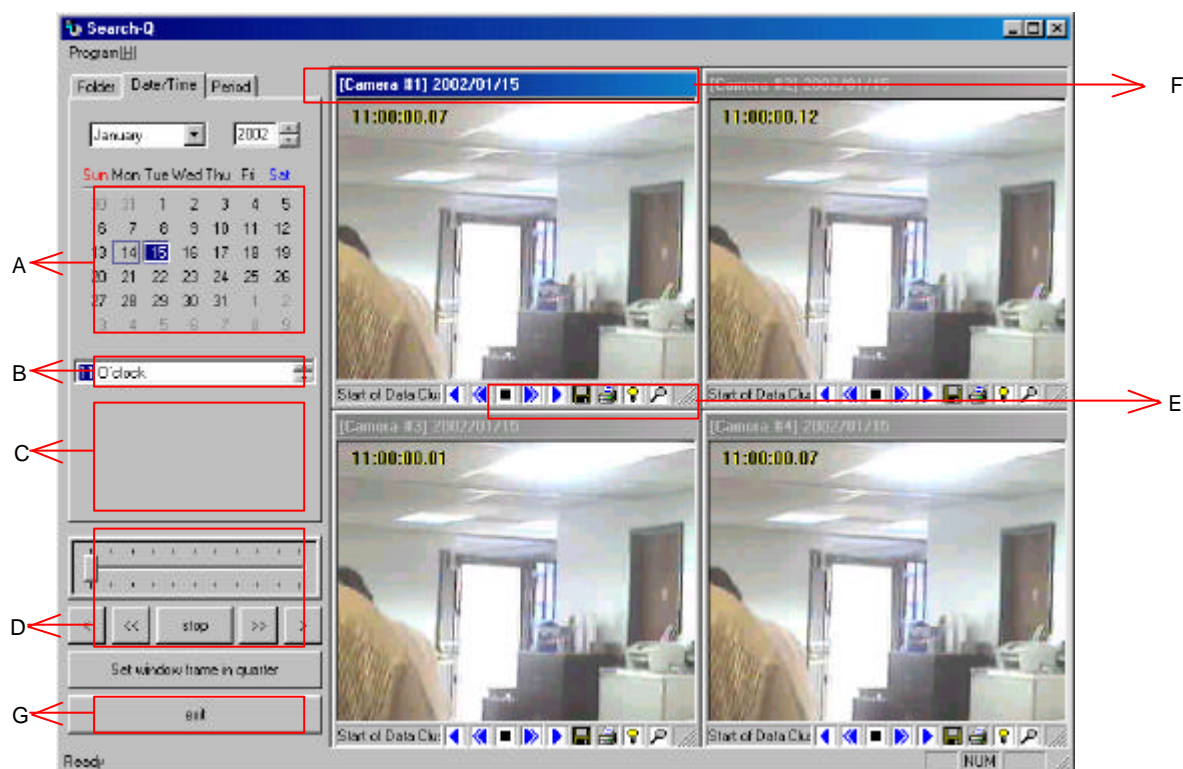
PHILTERA consists of three types of searching methods as follows;

- Index search: Search by selecting from a list of recorded images.
- Specified time search : Search by selecting a date on the calendar.
- Search per time : Search by entering specific time or range of time.

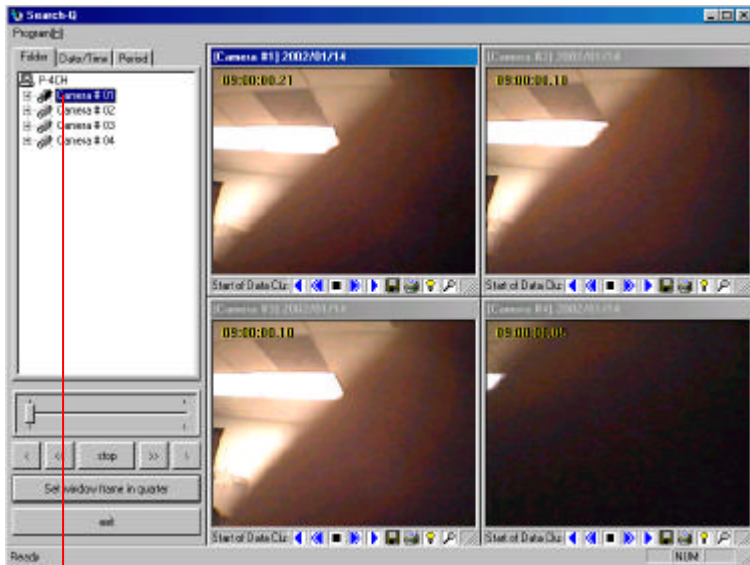


## A) Basic Concept of Search Screen

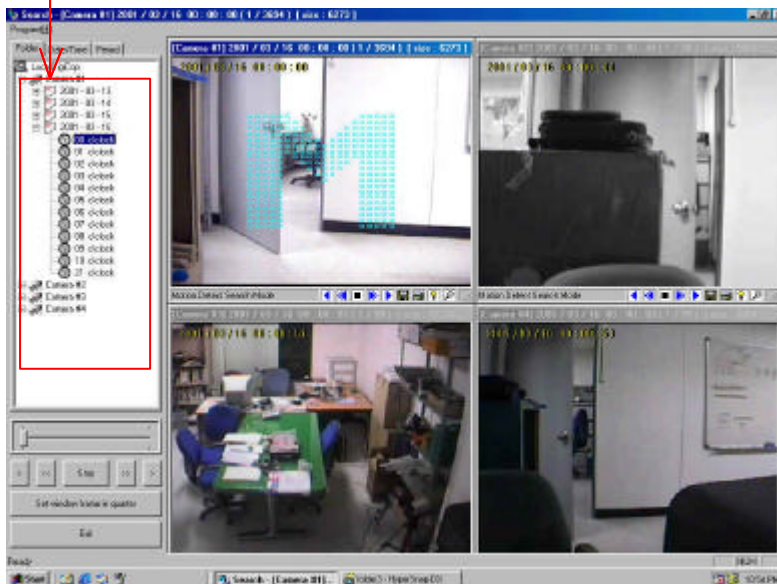
### SEARCH SCREEN USER INTERFACE



- A. Calendar : User calendar to search for specific recorded images.
- B. Time Panel : Enter specific time to search.
- C. Archive Index Panel : List of bookmarked images.
- D. Search Controls: rewind, forward, fast forward, etc.
- E. Local Control Panel
- F. Selected Window
- G. Exit: Click to quit search program.

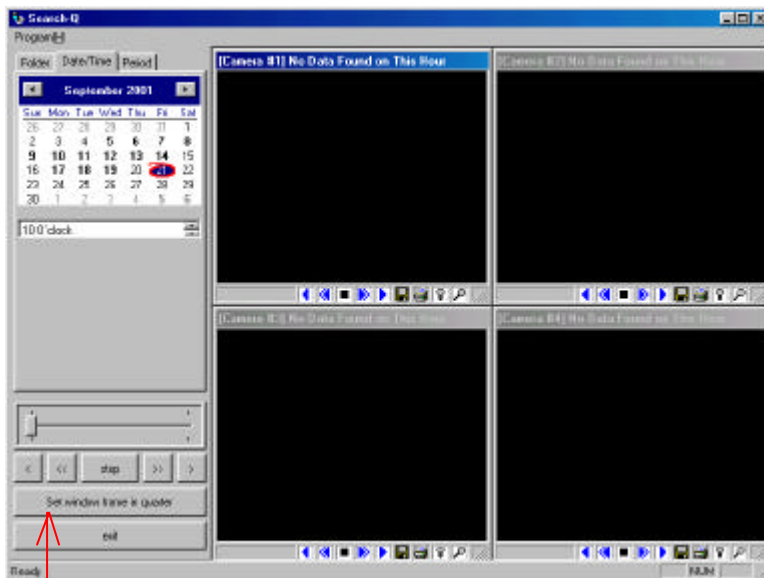
**B) Index Search**

1. Double click the camera you want to search to open the date index of recorded data per camera.



2. Double click on the date and all recorded times will be listed.

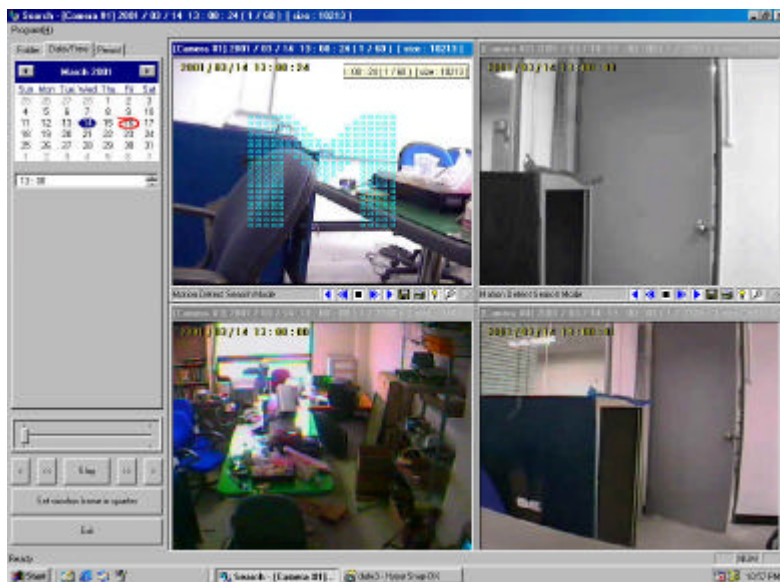
### C) Specified Time Search



Click Here to change from full screen to 4 screen view.

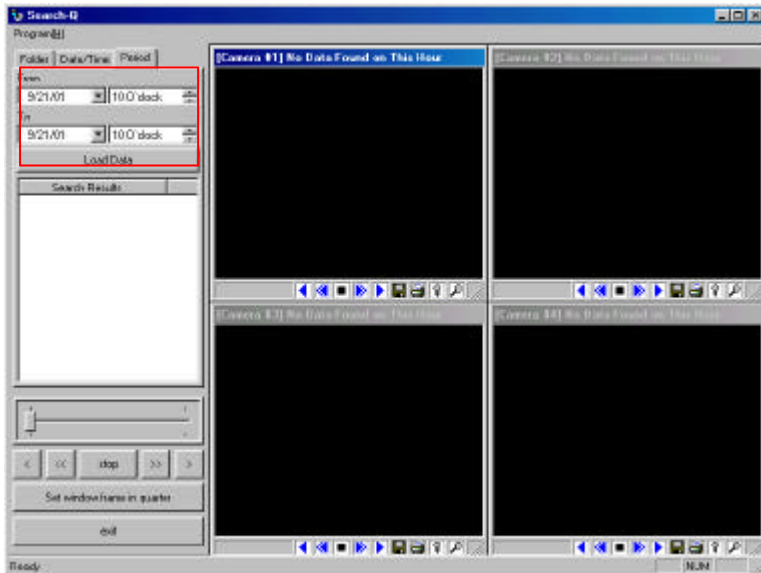
1. Select the date you want to search.

2. Enter time to search.



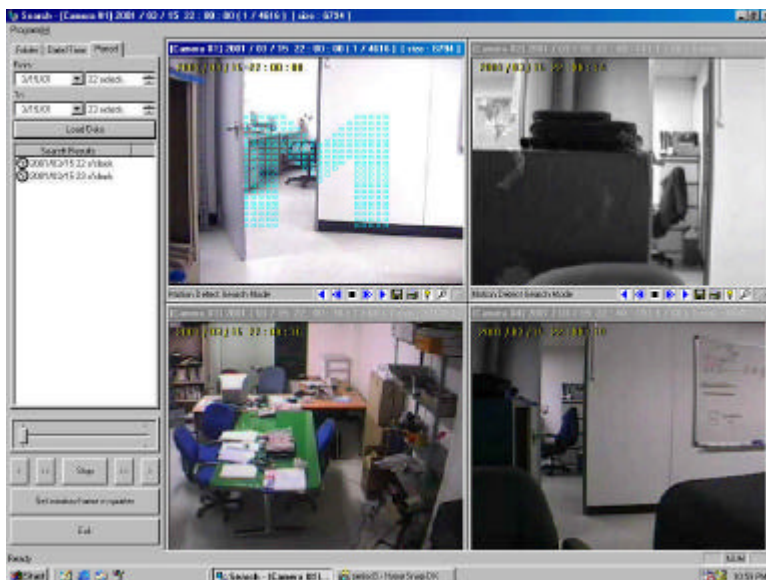
3. Images will be loaded and displayed in each of the screens.

## D) Search by Time



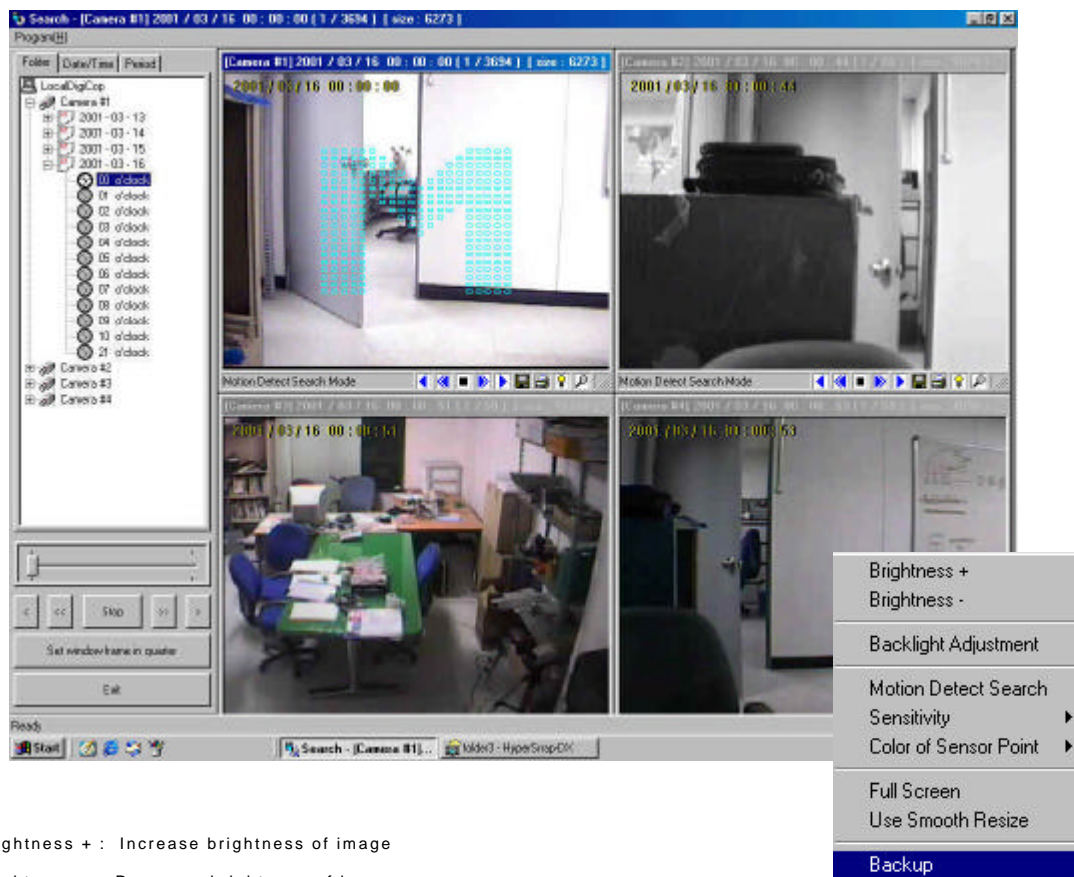
1. Insert the time that you want to search

2. Or click and choose the time range



3. If recorded data exists in the specified time and date, images will be loaded.

## E) Image Enhancement Features



1. Brightness + : Increase brightness of image

2. Brightness - : Decrease brightness of image

3. Backlight Adjustment : Adjust to increase clarity of image

4. Motion Detect Search: Search motion detected images

5. Sensitivity : can setup the sensitivity of motion.



6. Color of Sensor Point :

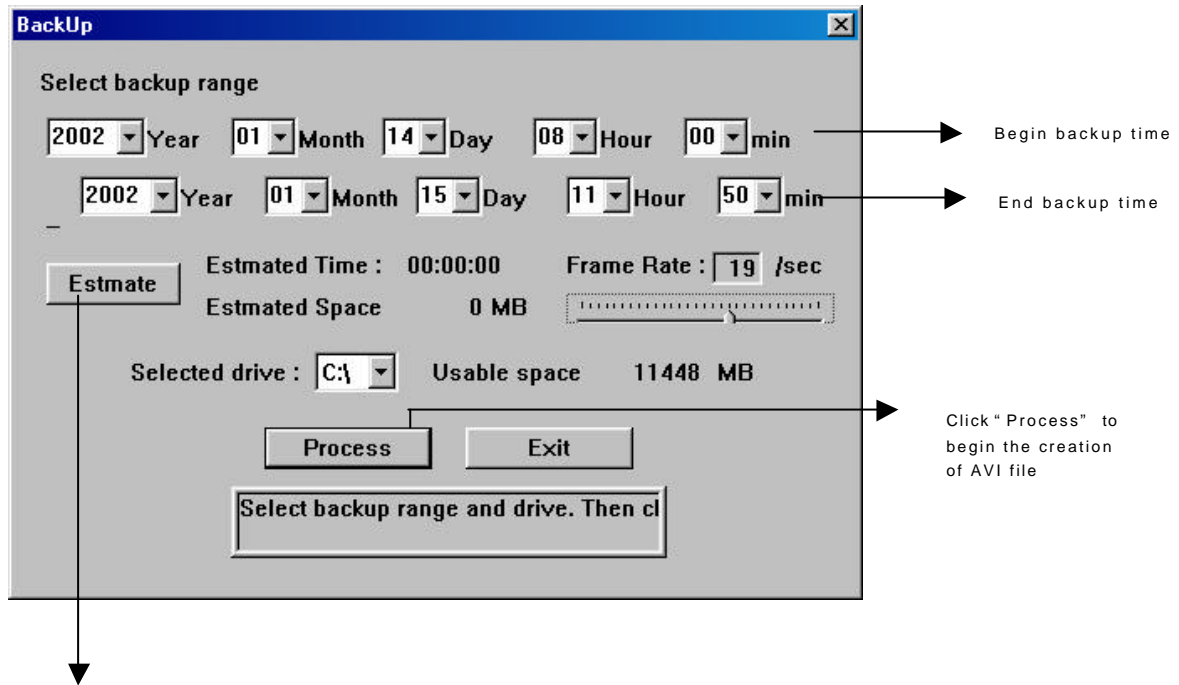


can adjust the color of motion detecting area differently.

7. Full Screen: To view any given camera full screen

8. Use Smooth Resize : Resize to increase clarity of image

9. Backup : To make AVI file.



Estimated Time: Estimated time required for backup to complete

Estimated Space: Estimated size of AVI file



## Chapter 4 CLIENT - REMOTE VIEWING SOFTWARE

**SOHO DVR** are configured for remote viewing via PSTN, LAN or Internet with the **PHILTERA Remote Viewing Software**.

### I. SYSTEM REQUIREMENT –

Remote Viewing Software requires the following environment to run properly:

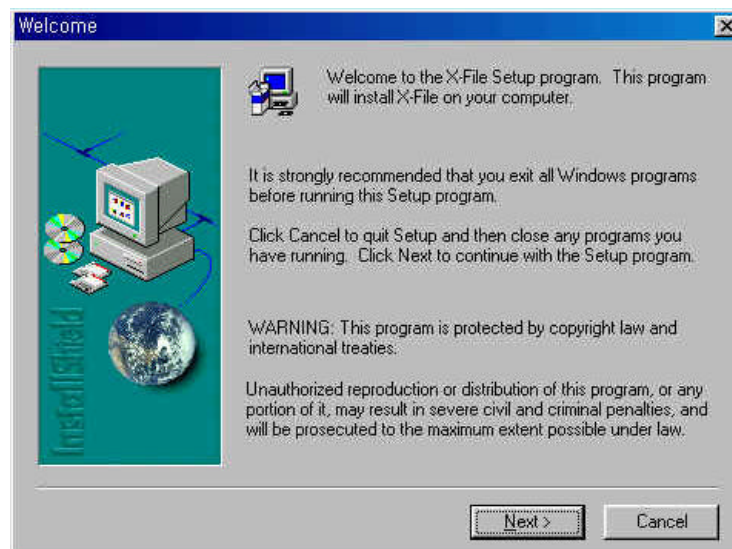
CPU	Pentium® II Celeron or Higher
System Memory	64M or Higher
Video Card	Windows 98,SE,ME,2000 compatible Supporting 1024 x 768 resolution
Monitor	Supporting 1024 x 768 resolution or 800 x 600 resolution
HDD	6 GB or Higher
CD-ROM	Required for Installation
MOUSE	PS/2 Mouse
OS	Windows' 98(SE,ME), 2000
Sound Card (optional)	Sound Blaster compatible

## II. SOFTWARE INSTALLATION

1. Insert Disk 1 of 2 into floppy drive. Click the Start button, Run, Enter the path a:\disk1\setup.exe  
Insert Disk 2 when prompted.

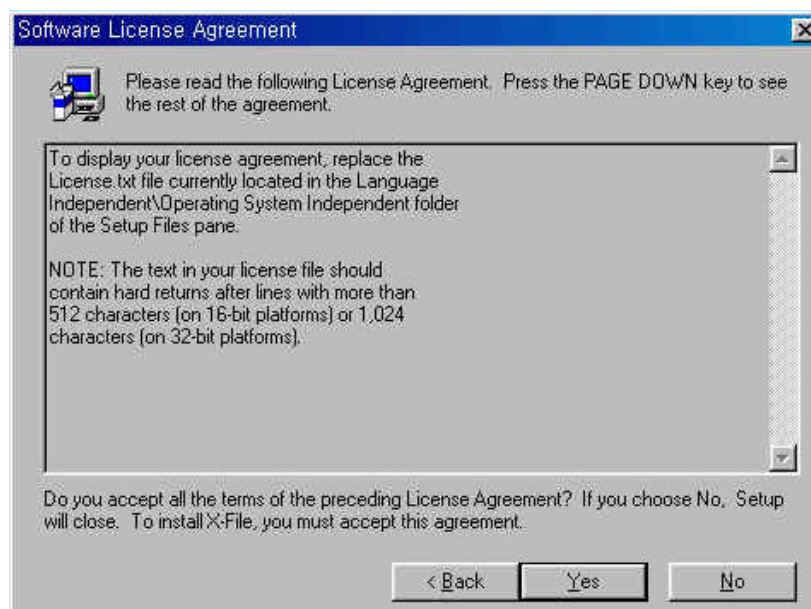


2. Follow the setup wizard to complete installation.

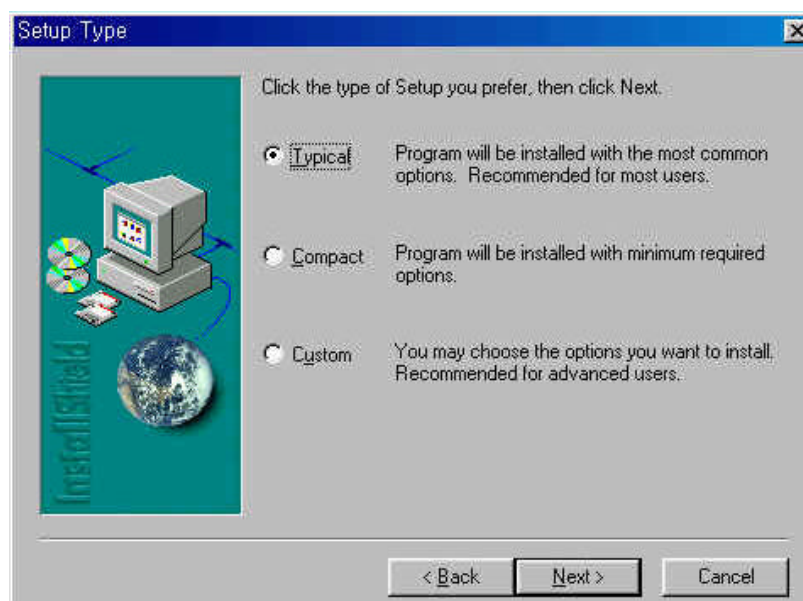




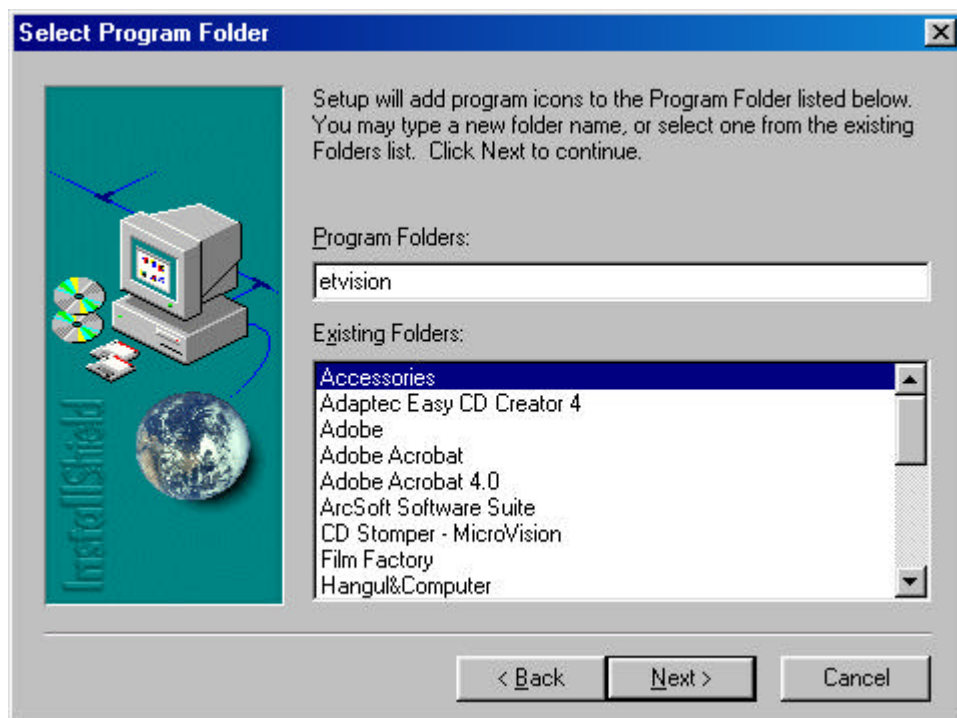
3. Click "Yes" and proceed.



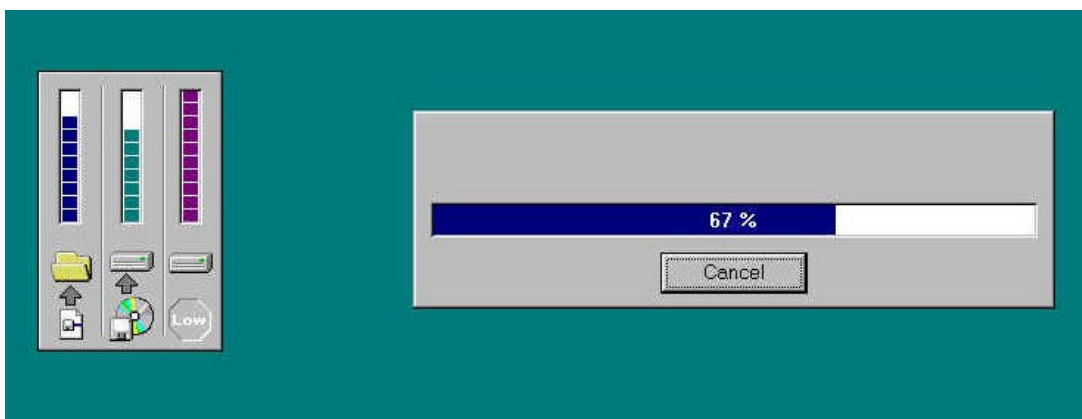
4. Click "Typical" and continue.



5. Select the program folder.

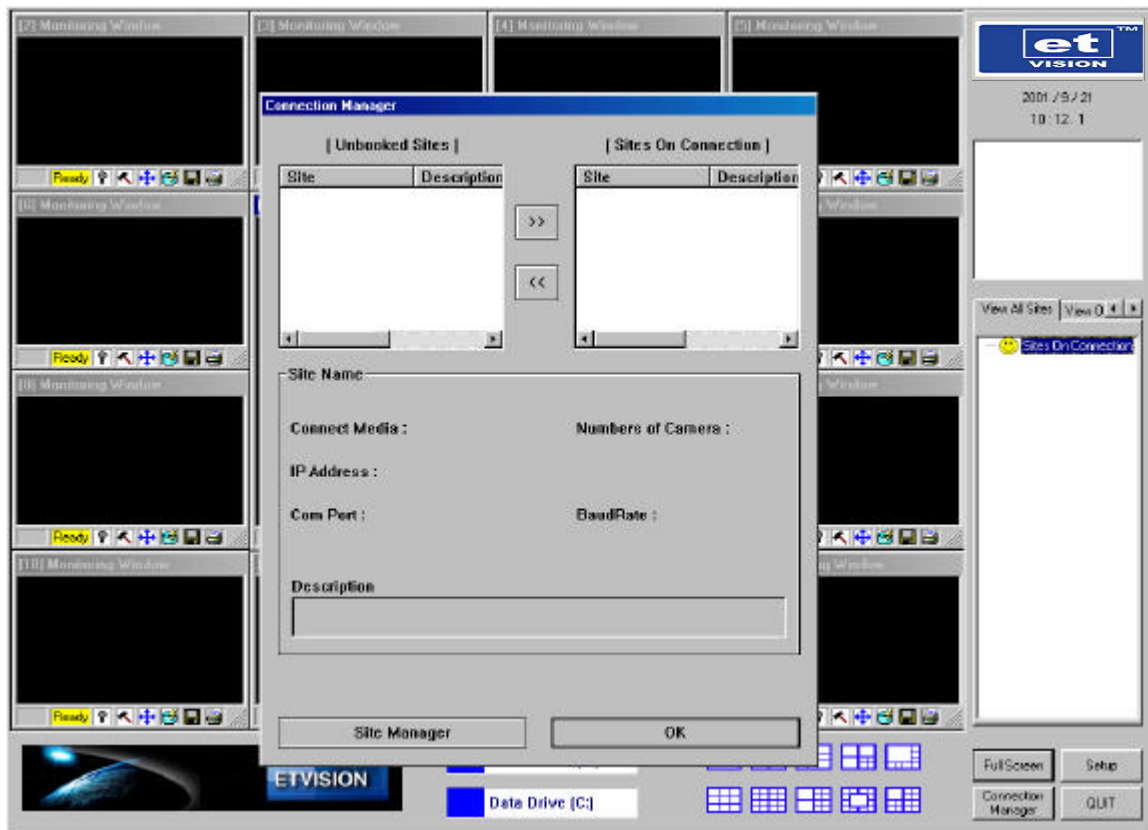


6. Reboot system upon complete installation.



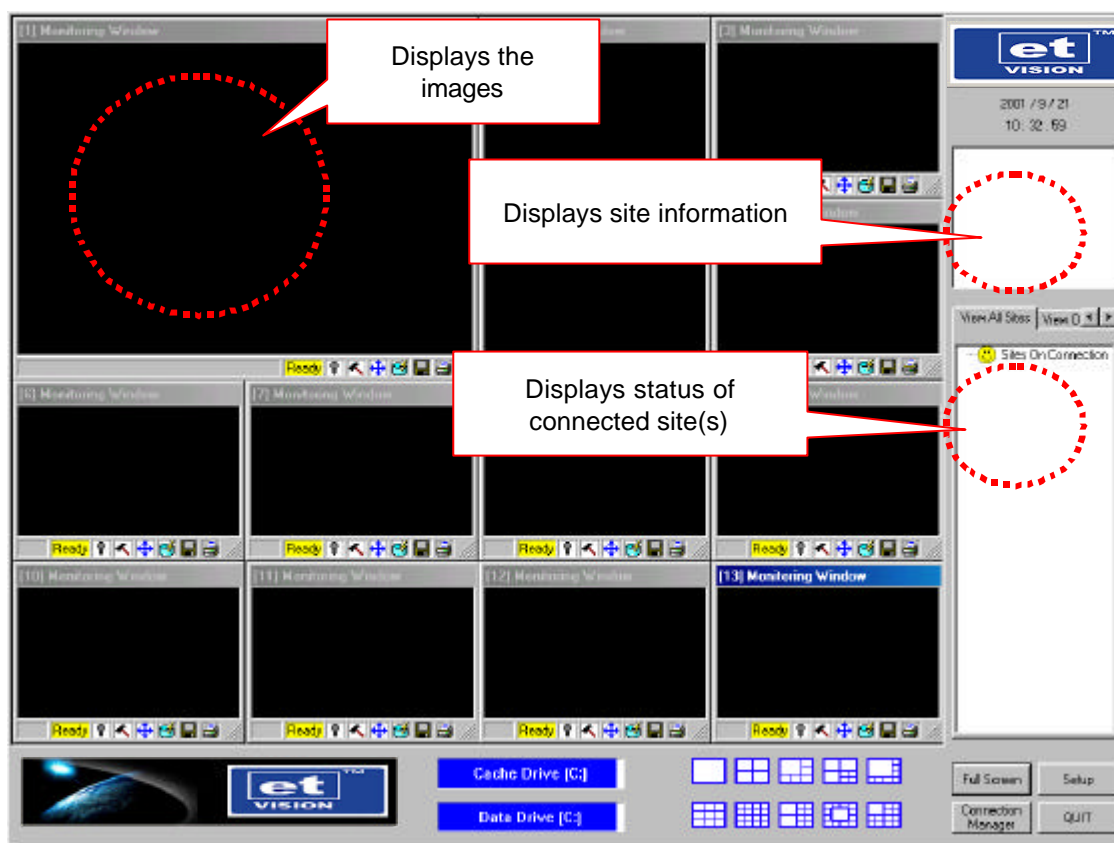
### III. REMOTE VIEWING SOFTWARE

Upon installing the remote viewing software, click twice on the “NC” shortcut icon on your Windows desktop to run the program.

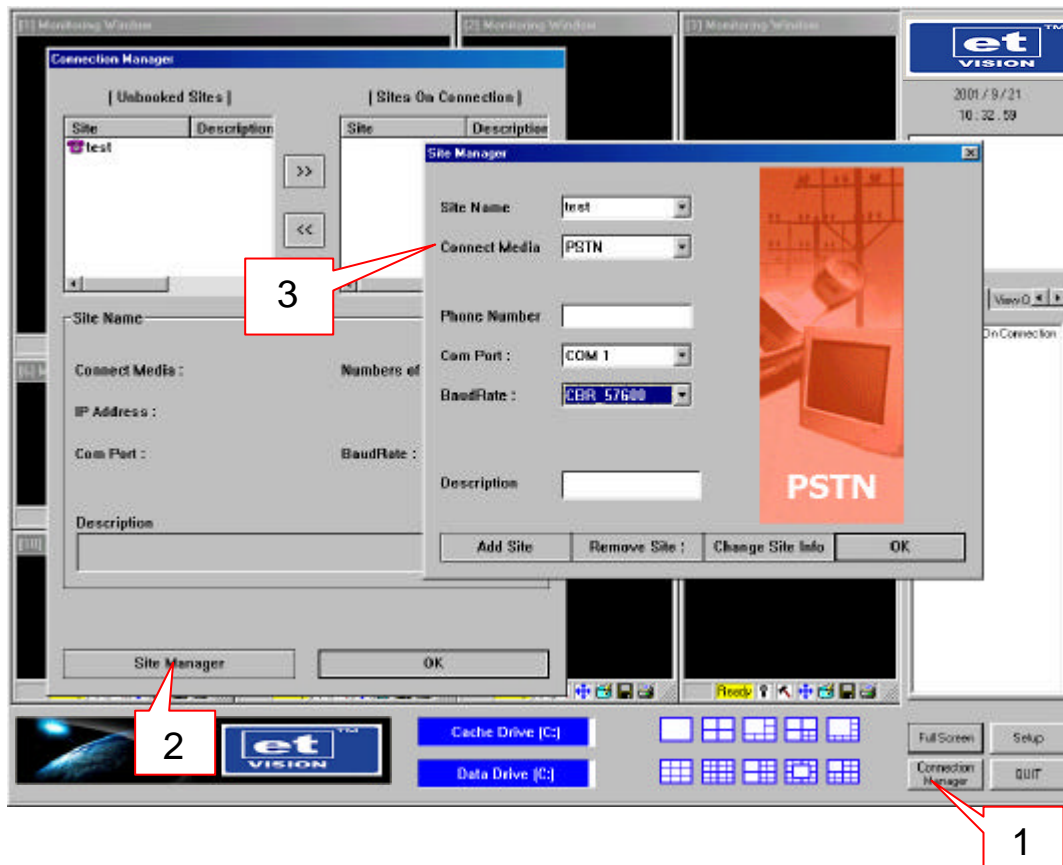


Upon running the software for the first time, “Connection Manager” window will open automatically. Click “OK” and enter “SETUP”.

## A) Main Screen

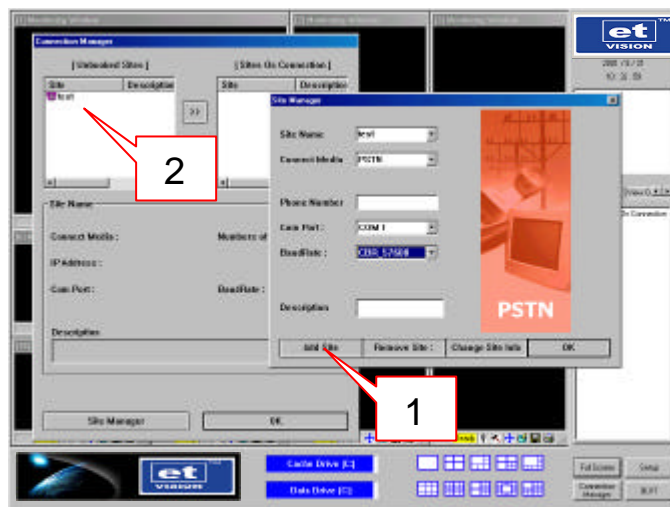


- Full Screen: Partition screens go full screen
- Connection Manager: Setup and connect to multiple PHILTERA systems.
  - Site Manager: Setup connectivity type and site.
- Setup: Setup "save" location and communication method.
- Quit: Click to quit program.

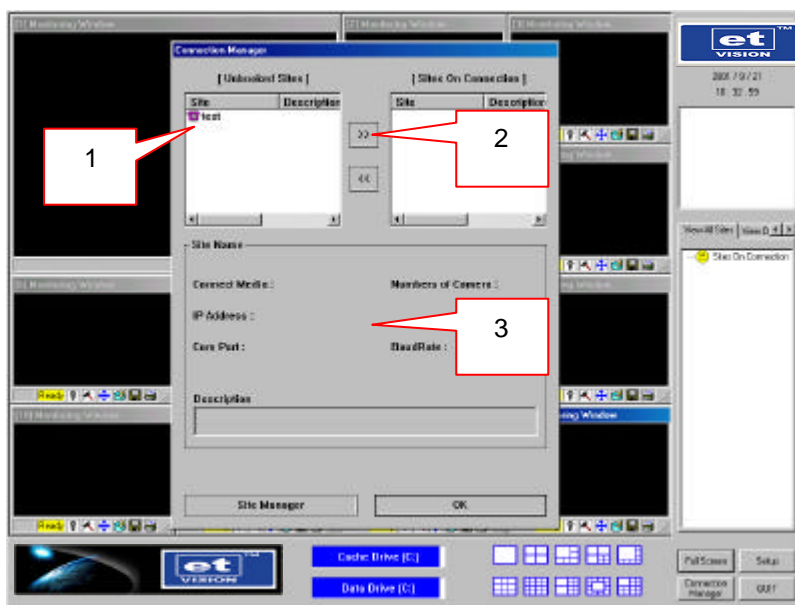
**B) Connection Manager Setting**

You can add, edit and remove sites within the Site Manager screen.

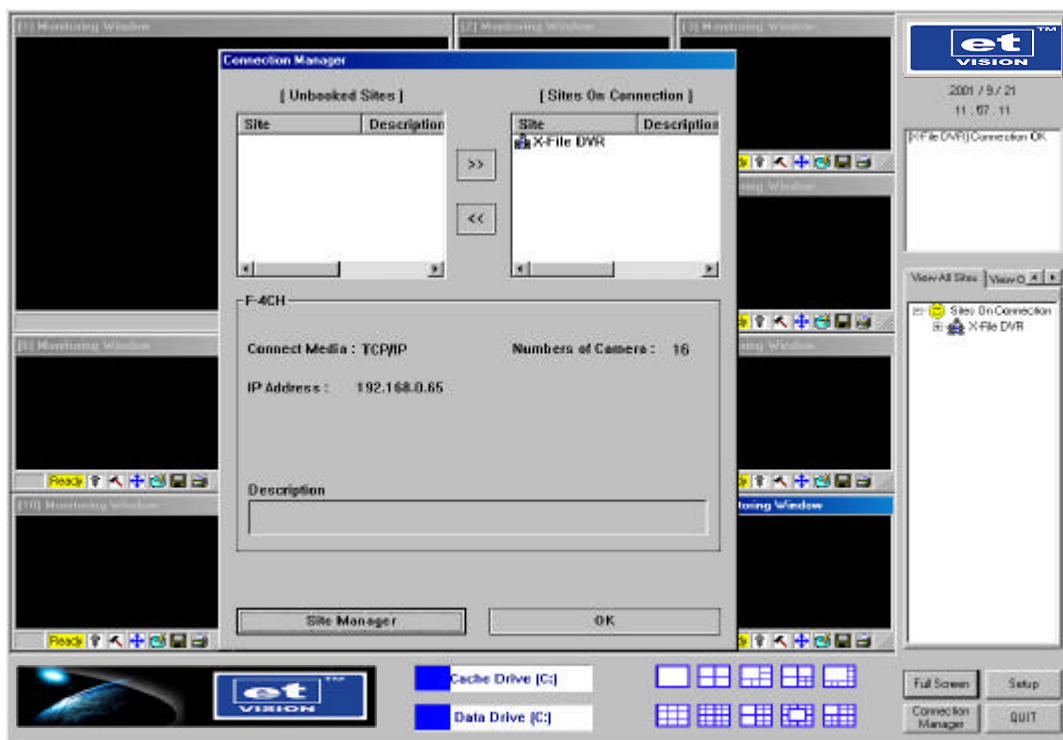
1. Click "Connection Manager" to setup connectivity with remote site(s).
2. Click "Site Manager" to add, remove or edit sites.
3. Select the appropriate media type for your connection:
  - Modem users select "PSTN"
  - Internet/LAN users select "TCP/IP"
  - Leased Line users select "Leased Line"



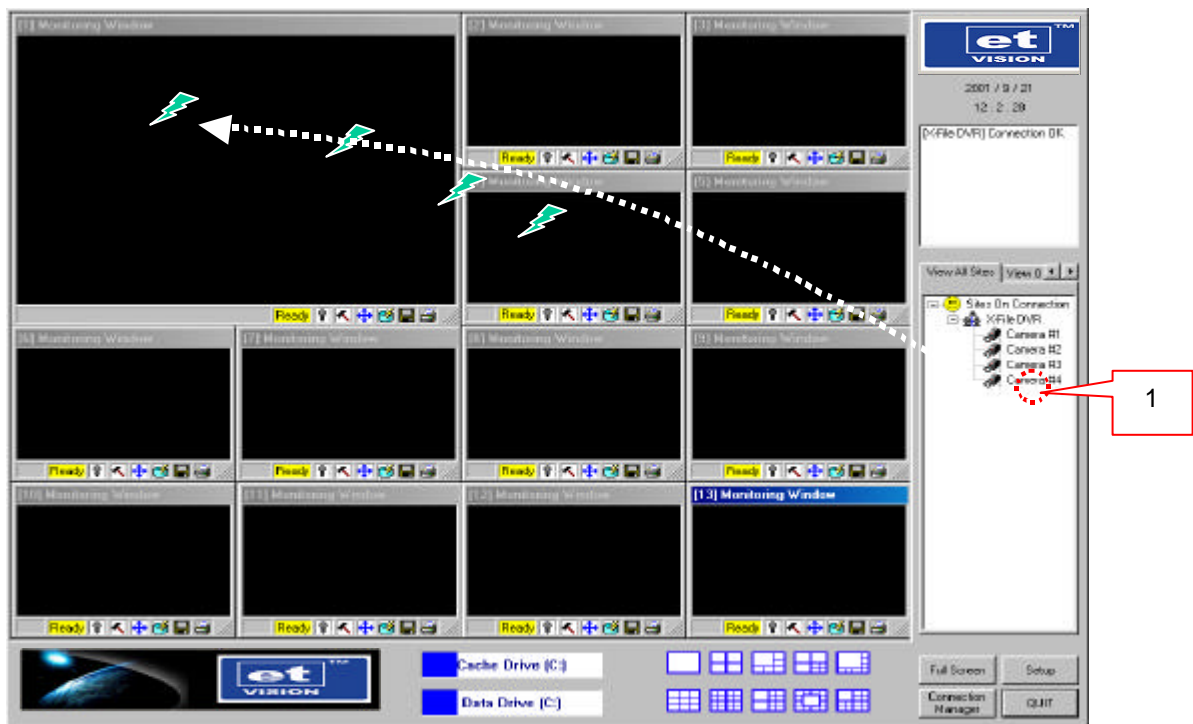
1. Click on "Add Site" upon entering the information.
2. Check the creation of the new site under "Unbooked Sites" column.



1. Double click on the site name to connect.
2. Then click >> to connect.
3. Displays the site information of the connecting site.



Click "OK" when the new site is listed under "Sites On Connection".

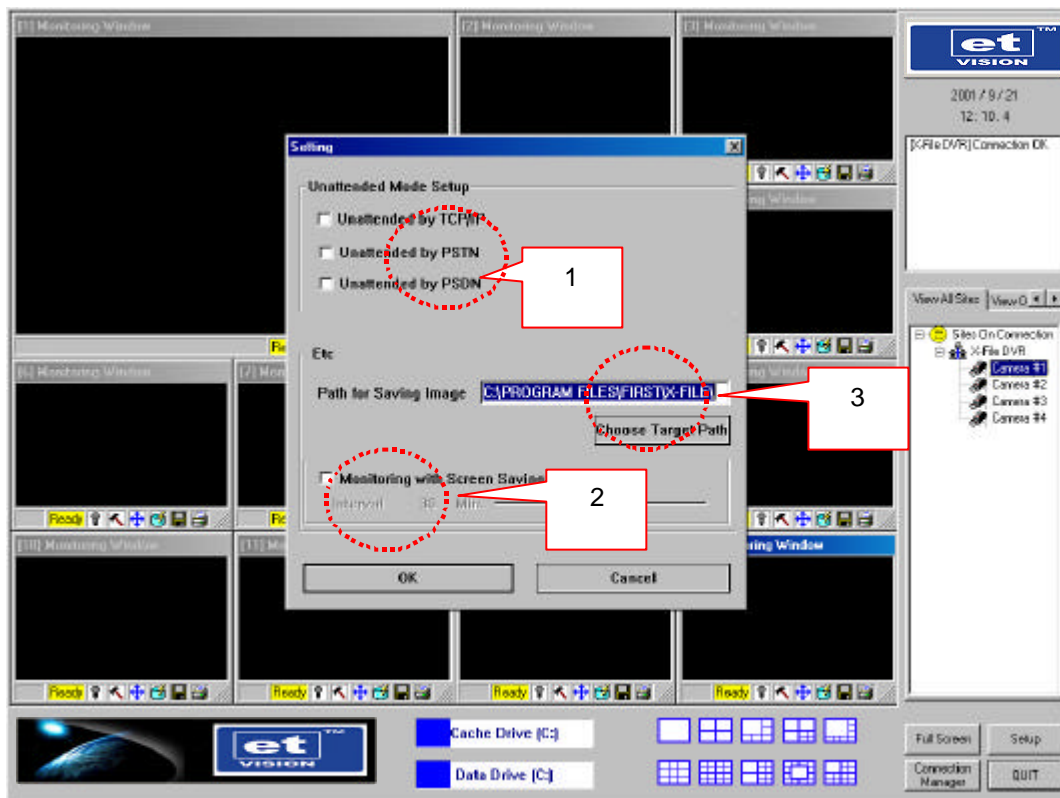


Drag any of the cameras to any screen to view within that screen.



### C) Setup Setting

Enter SETUP to activate the remote alarm notification.

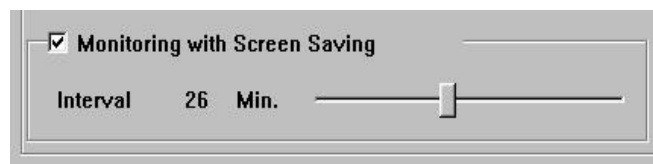
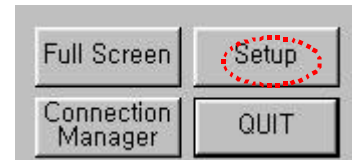


1. Unattended TCP/IP : when receiving alarm via Internet/LAN.  
Unattended PSTN : When receiving alarm via Modem.  
Unattended PSDN : When receiving alarm via leased line.
2. Setup monitoring under certain time intervals.
3. Designate image save location on your local hard drive.



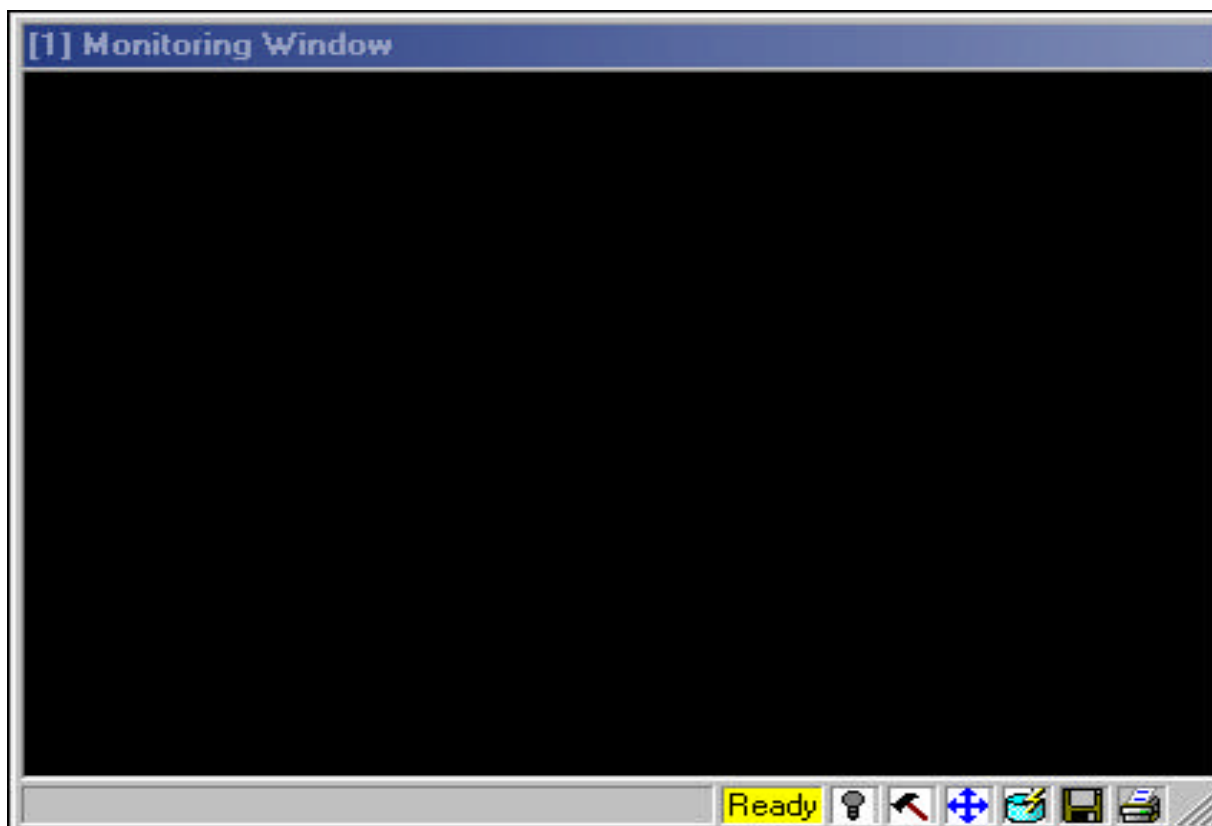
#### D) Screen Enhancement Function.

Screen enhancement function can be setup under "SETUP".



Interval Time can be setup by user, and can be setup up from "1 ~ 60 Min".

## E) Display Screen



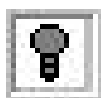
Highlights when remotely connecting to PHILTERA

Ready : Preparing to connect to PHILTERA.

Bad : No transfer activity detected.

Fail : Connectivity is disabled.

Fast : Image transfer is working properly.



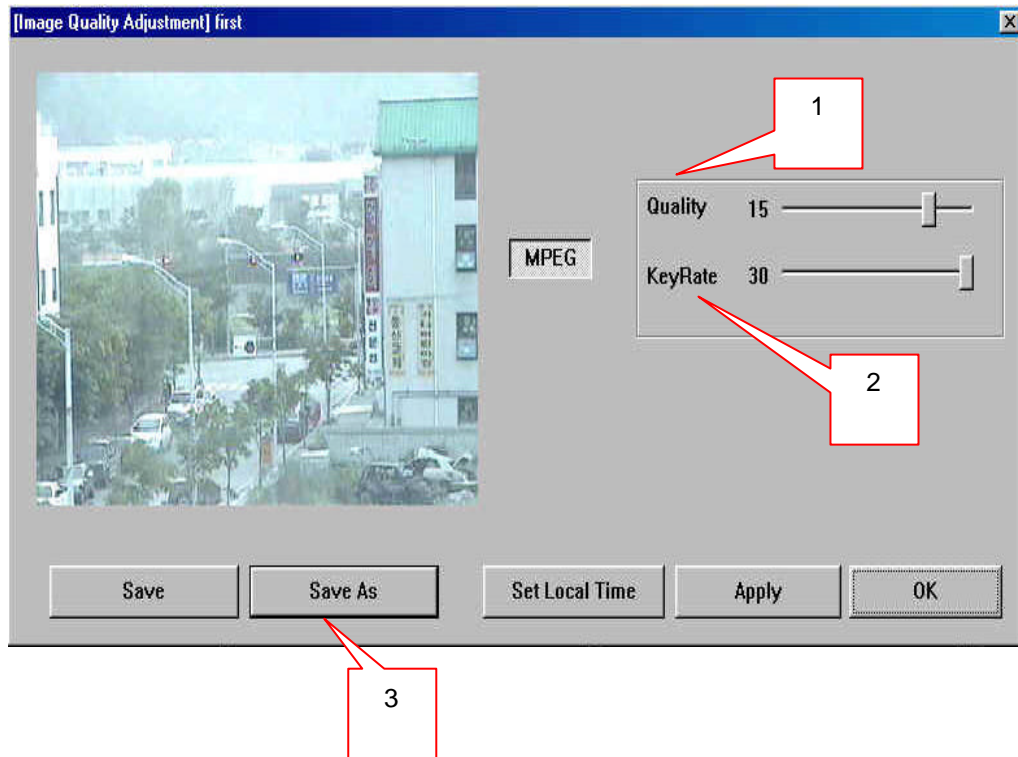
Grey with image transmission. (Gray)



Turns green when images are being transferred. (Green)



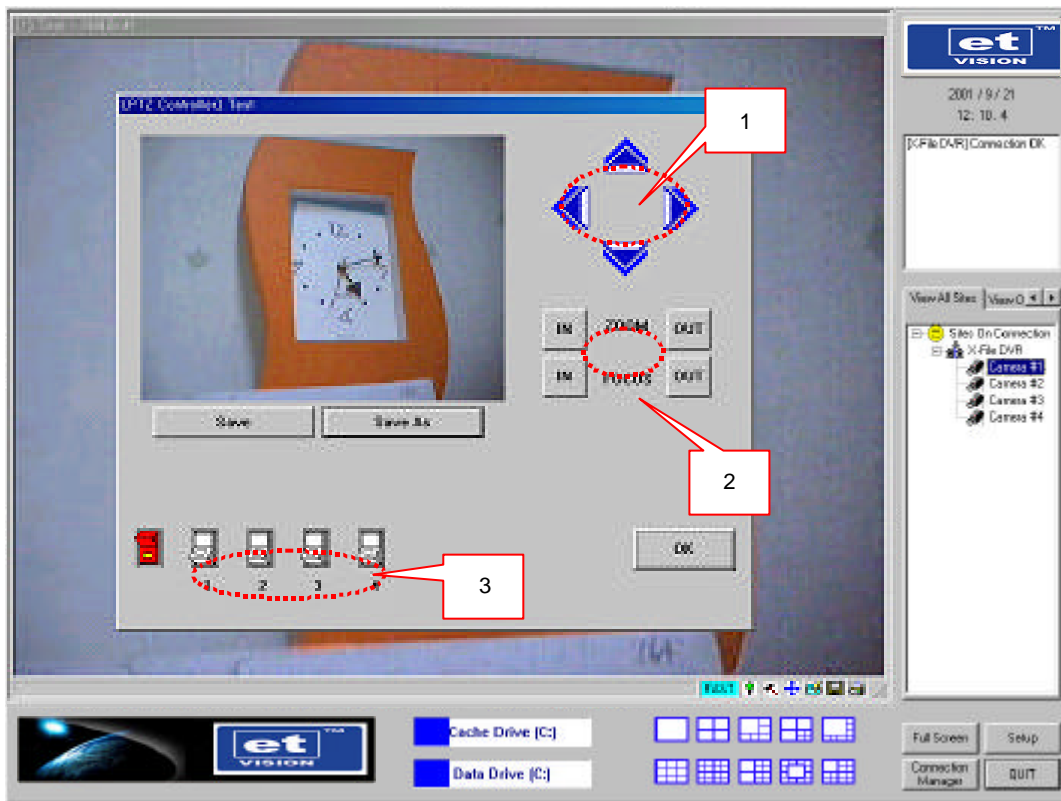
Click to open menu to adjust transmitting image quality and rate.



1. Quality: Move the bar from left to right; the Higher the number, the higher the quality of image.
2. Key Rate: Since MPEG compression is used when receiving the images, just the "Key frames" can be received from the host site to maximize transmit bandwidth and quantity of images received.
3. Save As: Click to choose save directory.



Click to open Pan / Tilt / Zoom control menu.



1. Pan / Tilt controls.

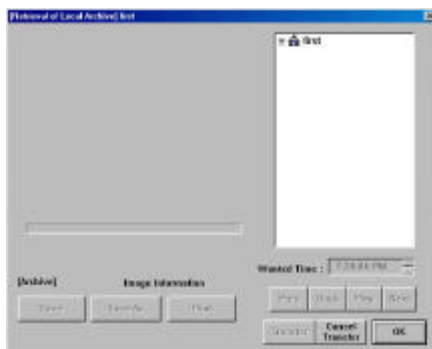
2. Zoom / Focus controls.

3. Control any other external devices connected to the PHILTERA system.

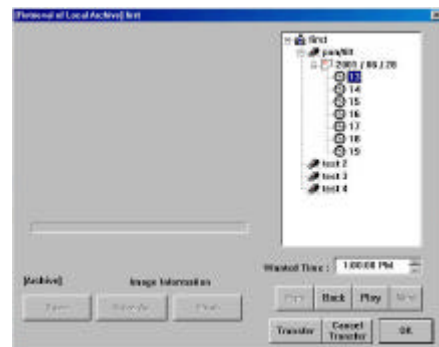
(ex : close door / open, lights, etc.)



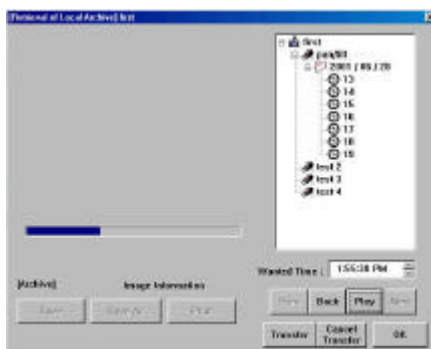
Icon will highlight when remote user is logged into the main system via network.



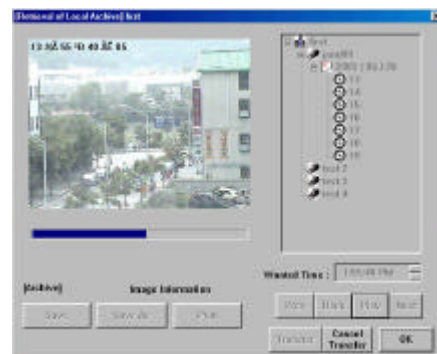
1. Select the site to view remotely.



2. Choose camera and time of the selected site to view.



3. Click "PLAY" to begin transmitting images from the main system.



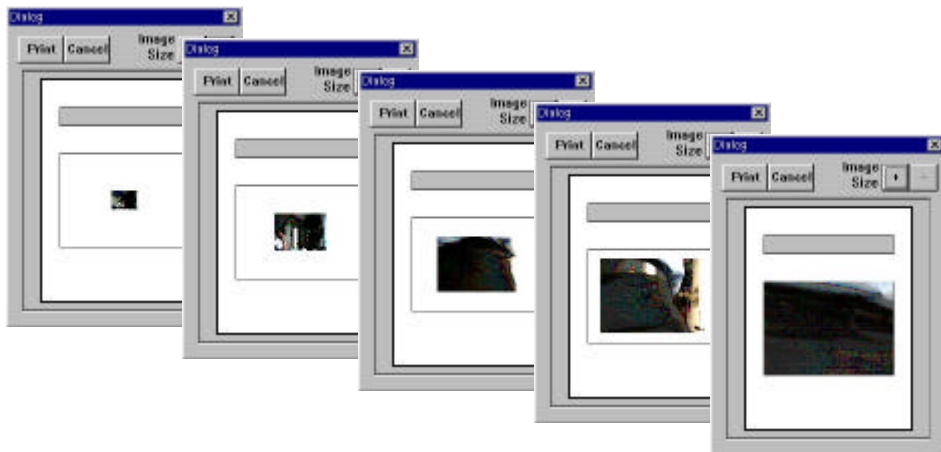
4. Can search the recorded data image of selected time list .



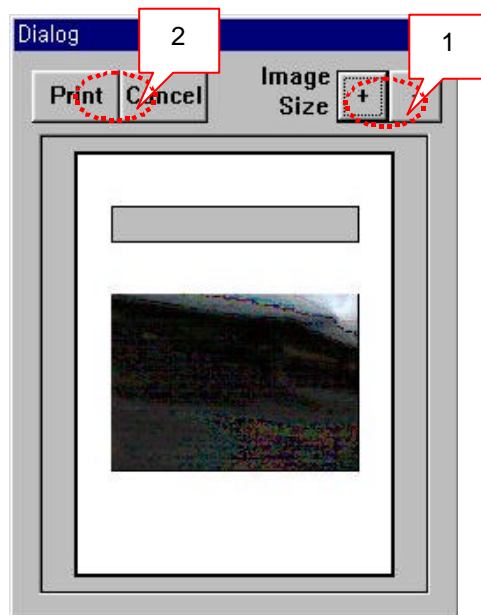
Click icon to save current image.



Click icon to print the current image.



- Any given image can be printed in 5 different sizes.



1. Adjust the size of the image.

2. Click to print.

3. Click to cancel.

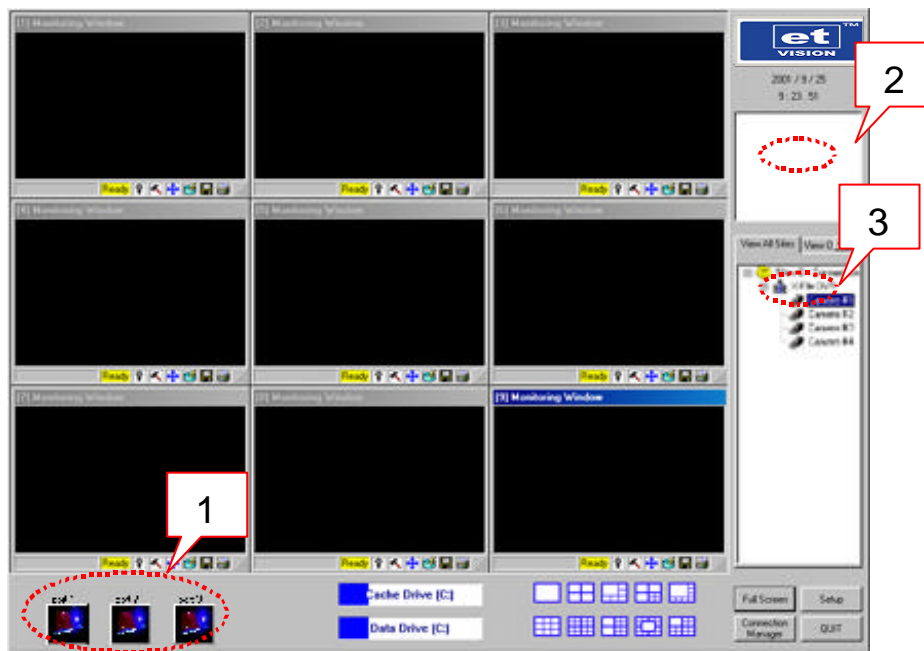
**F) Drop down menu for each screen – right click on any screen**



1. Full Screen: Go to full screen on given camera image.
2. Use Smooth Resize: Depending on the quality of the picture, this allows filtering for better quality video image.
3. Zoom: Zoom within the given camera image.
4. Save As: Save the current image to a floppy disk or other media
5. Save Sequentially: Save the current video clip per image to a floppy disk or other media.
6. Channel Cancel : Disconnect the given camera connectivity.

## G) Remote Alarm Function

Remote alarm function allows the User to configure the software so that the remote client can be notified with an on-screen siren / alarm / motion and/or a call to the user's cell phone when motion and/or sensor is triggered at the main system.



1. Auto-Alarm notification to the remote client that motion/sensor has been triggered.
2. Displays detailed information of the system and camera which caused Auto Alarm upon detecting motion and/or sensor.
3. Displays all alarm triggered cameras.
4. Screens will display the images triggered by auto alarm.

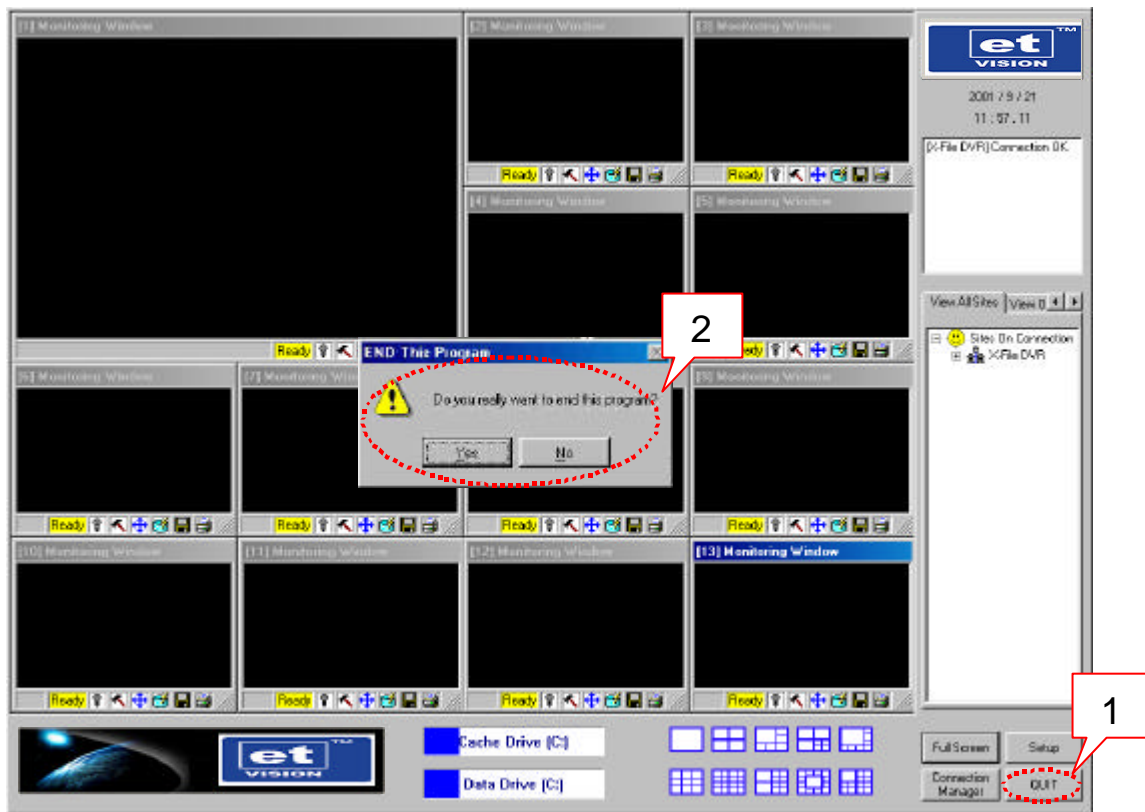


## H) Minimize Program



Remote viewing software can be minimized while running other software.

## I) Program Quit



1. Click "QUIT" to exit program.

2. Click "Yes" to reconfirm.

For more information on our products and updates,

Please visit our website at

[www.philtera.com](http://www.philtera.com)

Email : [stevenrho@philtera.com](mailto:stevenrho@philtera.com)

Or

Write us at:

PHILTERA CO.,LTD.

3F,Samil Bldg,656-282 ,Sungsoo-1Ga,Sungdong-Gu,

Seoul,Korea, ZIP.133-823

Tel: +82-2-465-6461 / Fax: +82-2467-6460