

PROPRIETARY NOTICE
 THIS DOCUMENT AND THE INFORMATION DISCLOSED HEREIN ARE PROPRIETARY DATA OF ACSS, LLC. NEITHER THIS DOCUMENT NOR THE INFORMATION CONTAINED HEREIN SHALL BE REPRODUCED, USED, OR DISCLOSED TO OTHERS WITHOUT THE WRITTEN AUTHORIZATION OF ACSS, LLC

NOTICE
 FREEDOM OF INFORMATION ACT (5 USC 552) AND DISCLOSURE OF CONFIDENTIAL INFORMATION GENERALLY (18 USC 1905)
 THIS DOCUMENT IS BEING FURNISHED IN CONFIDENCE BY ACSS, LLC THE INFORMATION DISCLOSED HEREIN FALLS WITHIN EXEMPTION (b) (4) OF 5 USC 552 AND THE PROHIBITIONS OF 18 USC 1905.

REVISONS		DESCRIPTION	DATE
CRNO.	REV		
	E	INITIAL RELEASE	05-22-02
5208	F	SEE DESCRIPTION PER CHANGE REQUEST.	07-18-02
5580	G	SEE DESCRIPTION PER CHANGE REQUEST.	11-06-02
5740 5778	H	SEE DESCRIPTION PER CHANGE REQUEST.	12-18-02

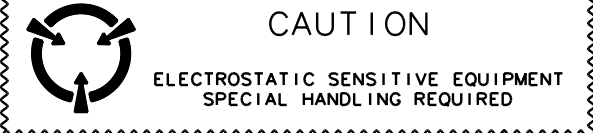
**TABLE I
 BUSWIRE DATA**

CONDUCTOR COND NO.	ITEM NO.	FROM CIRCUIT POINT	PWB SIDE	TO CIRCUIT POINT	PWB SIDE
601	704	P1E-10A	A	J3-E31	B
602	704	P1E-10B	A	J3-D31	B
603	704	P1E-10C	A	J3-C31	B
604	704	P1D-15E	A	P1E-2D	A

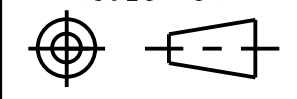
**TABLE III
 COMPONENT INSTALLATION**

COMPONENT REF DES	PIN	TO CIRCUIT POINT	PWB SIDE	SLVG ITEM NO.
C17	1	P1F-9A	A	702
	2	P1C-14		
C18	1	P1F-9B	A	702
	2	C2-BOTTOM		

NOTES:

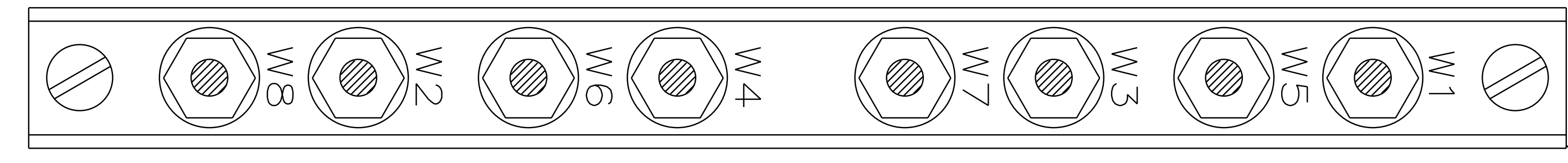
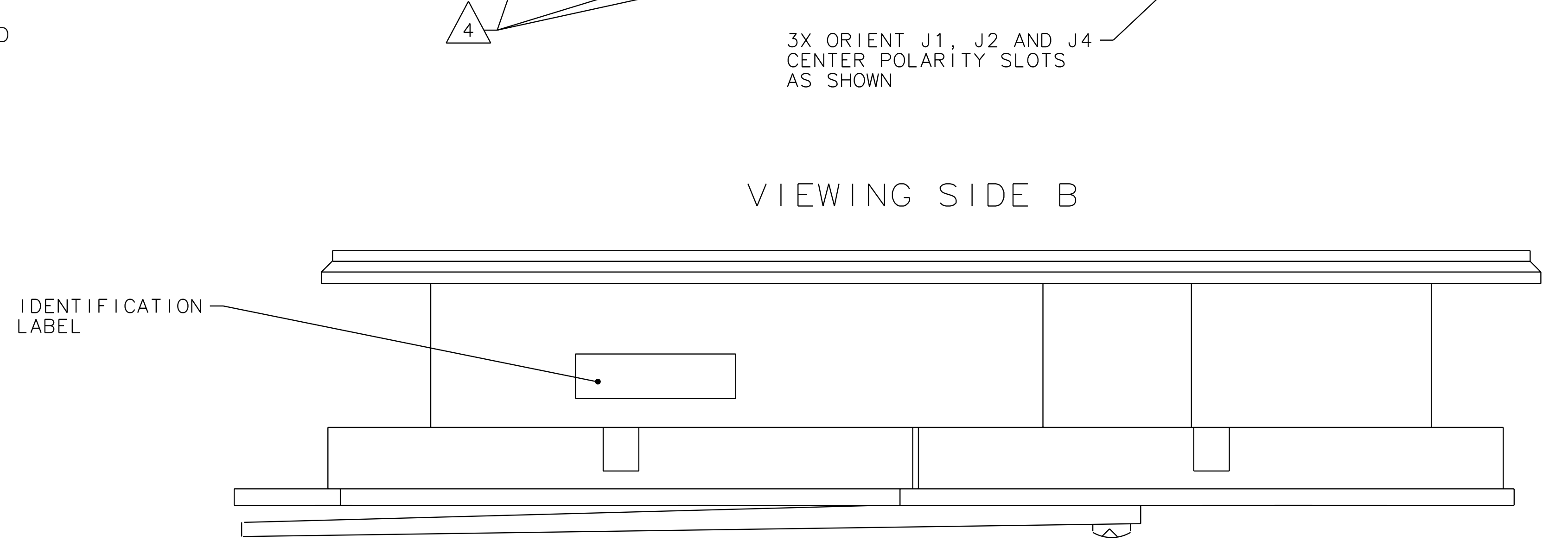
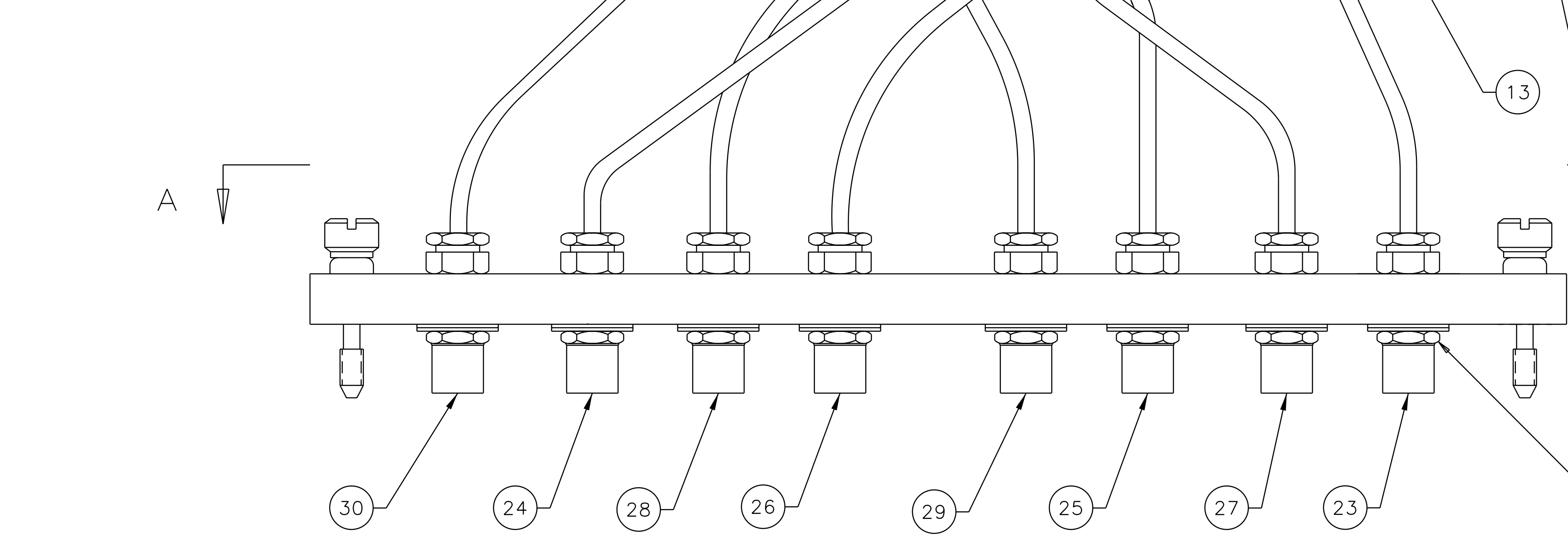
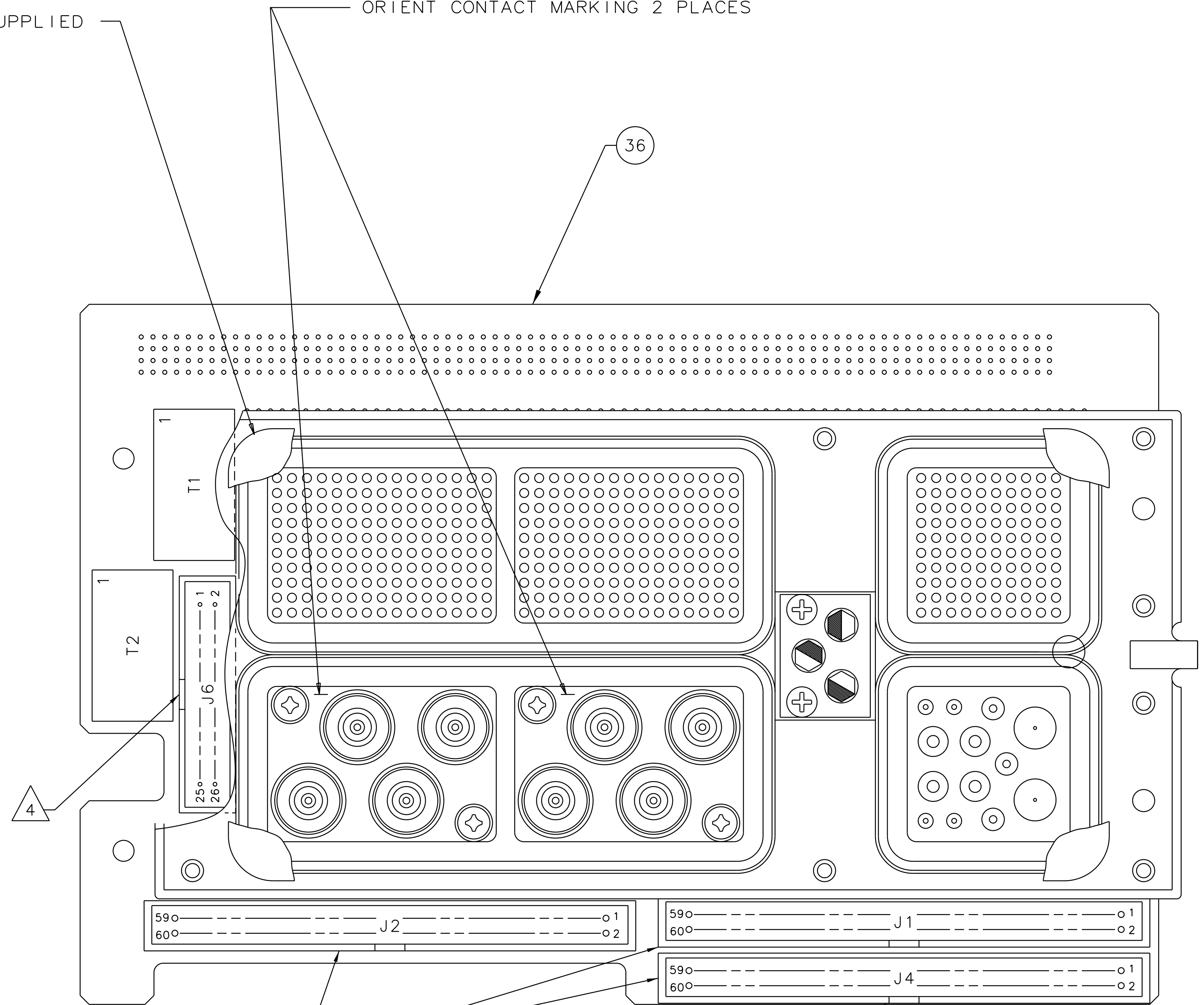
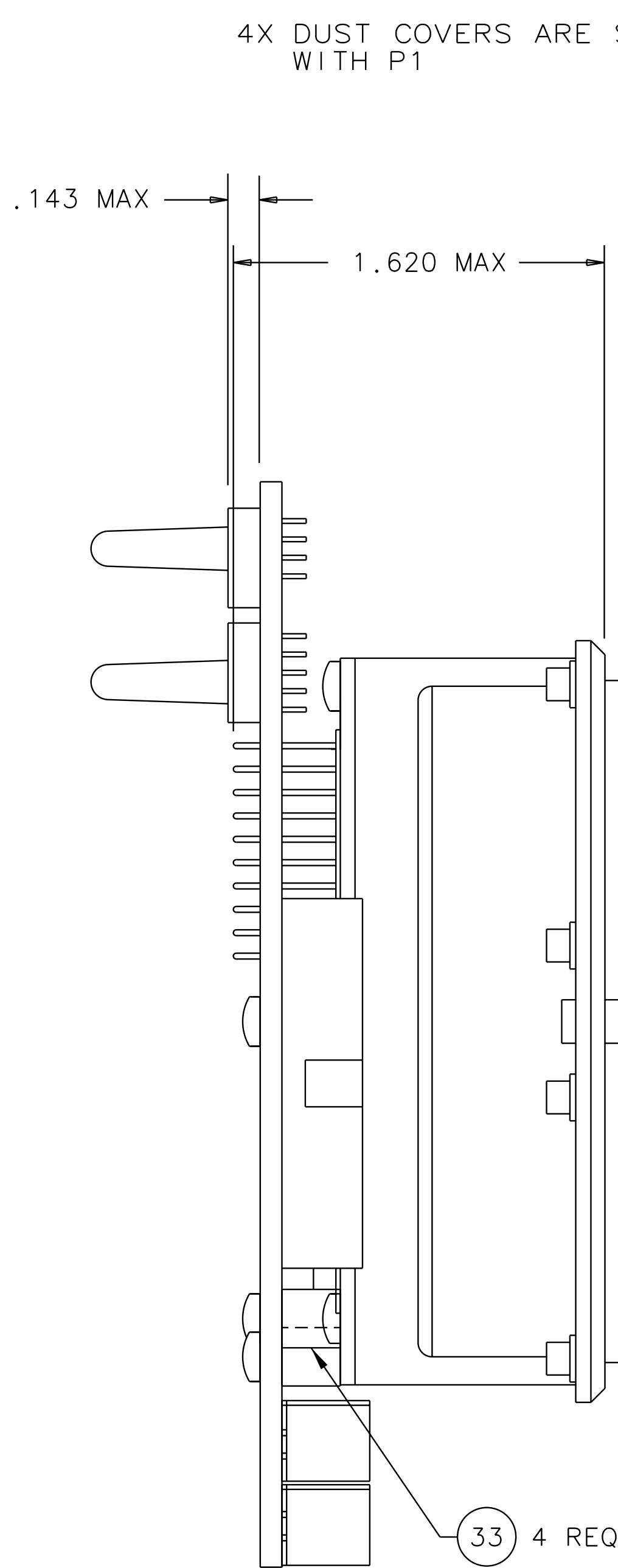
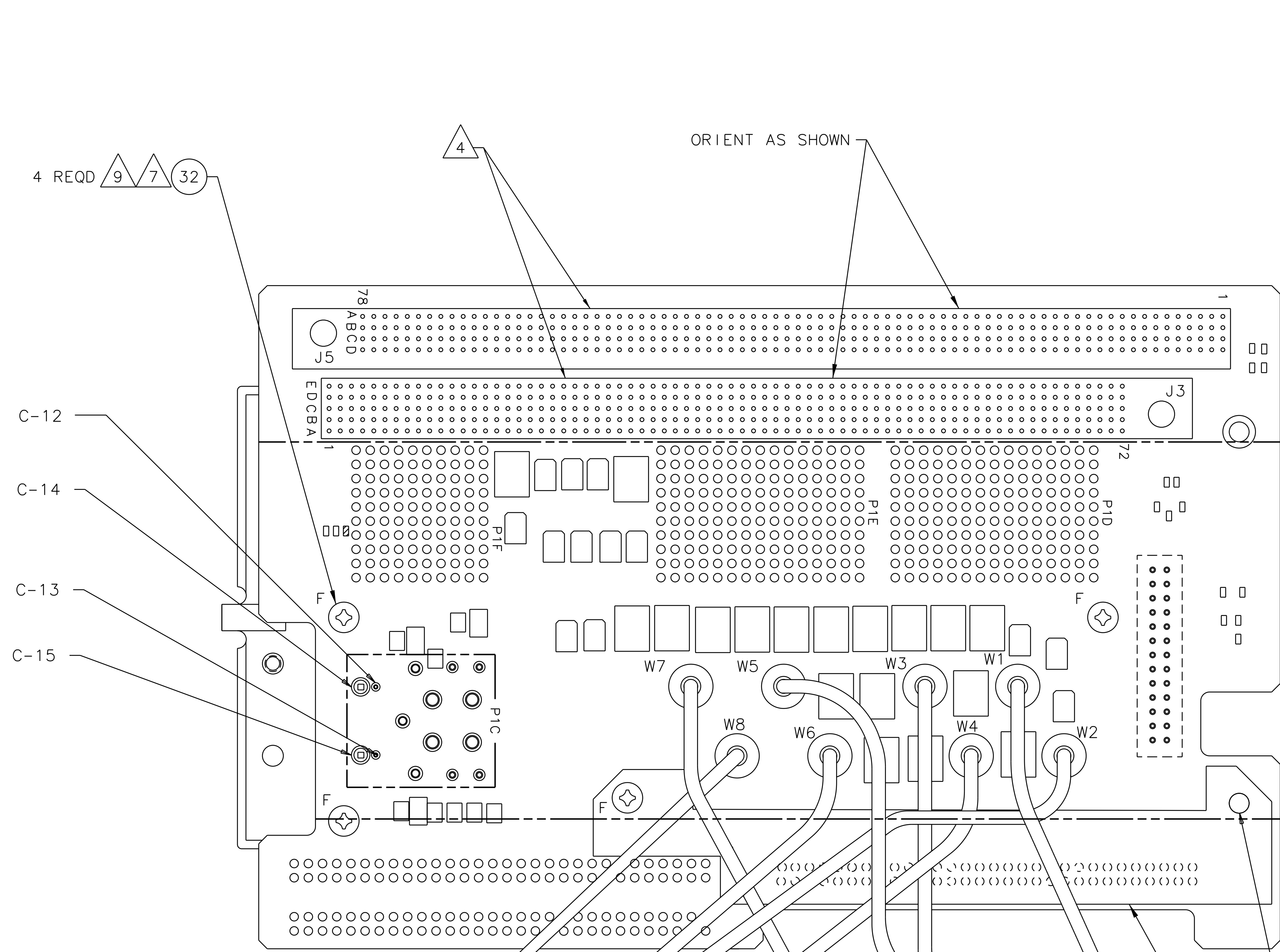
- ASSEMBLE PER ITEM 701 (M7012784).
- 
CAUTION
 ELECTROSTATIC SENSITIVE EQUIPMENT
 SPECIAL HANDLING REQUIRED

 THIS ASSEMBLY INCLUDES COMPONENTS WHICH ARE SUBJECT TO DAMAGE BY ELECTROSTATIC CHARGES; THEREFORE, ALL COMPONENTS SHALL BE HANDLED IN ACCORDANCE WITH GUIDELINES FOR ELECTROSTATIC DISCHARGE CONTROL.
- COMPONENT LEAD PROTRUSION SHALL BE .060 MAXIMUM, EXCEPT J2 SHALL BE .030 MAXIMUM, BARE COPPER PERMISSIBLE ON COMPONENT LEADS AT TRIMMED SURFACES. P1 LEADS DO NOT REQUIRE TRIMMING IF THEY ARE WITHIN THE LIMITS AS DEFINED ON SHEET 2. ±
- J1, J2, J4 AND J6 SHALL BE FLUSH TO .010 MAX ABOVE SIDE B OF ITEM 36. J3 AND J5 SHALL BE FLUSH TO .010 MAX ABOVE SIDE A OF ITEM 36.
- SQUARE PADS ON PRINTED WIRING BOARD INDICATE PIN 1.
- SOME COMPONENTS SHOWN OVERSIZE TO PROVIDE SPACE FOR DESIGNATORS.
- APPLY LOCTITE (ITEM 34) TO THE THREADS OF ITEM 32 PER M695178.
- REMOVE PINS J1-8; J2-51; J4-4 AND J6-4 FROM THE BODIES OF J1; J2; J4 AND J6.
- REMOVE 4 CONNECTOR INSERT RETAINING SCREWS FROM P1 MARKED *F* AND REPLACE WITH ITEMS 32 AND 33.
- INSTALL CABLES IN ORDER AS SHOWN IN TABLE II.
- SHADED COMPONENTS ARE NOT INSTALLED.
- INSTALL BUS WIRE PER TABLE I, LEFT OR RIGHT, TOP OR BOTTOM AS VIEWED FROM INDICATED SIDE.
- SECURE CONDUCTOR NO 601, 602 AND 603 (IN TABLE I) WITH RTV (FIND NO. 703) ALONG TOP SURFACE WHICH IS SHOWN ON SHEET 3.
- REMOVE PIN J5-D11 BEFORE INSTALLING.
- FOR J1, J2, AND J4 IGNORE THE PIN 1 IDENTIFIER ON THE CONNECTORS AND INSTALL CONNECTORS PER PIN 1 AS SHOWN ON CCA DRAWING.
- REMOVE SOLDER MASK FROM MOUNTING HOLE PLATING ON SIDE A.
- REMOVE SOLDER MASK FROM MOUNTING HOLE PLATING ON SIDE B.
- INSTALL COMPONENT PER TABLE III, LEFT OR RIGHT, TOP OR BOTTOM AS VIEWED FROM INDICATED SIDE.

UNLESS OTHERWISE SPECIFIED, DIMENSIONS ARE IN INCHES: TOLERANCES: ANGLES ± - 2 PL DEC ± - 3 PL DEC ± -		THIRD ANGLE PROJECTION	CONTRACT	OPERATIONAL NOTE
INTERPRET DIMENSIONS AND TOLERANCES PER AMSE Y14.5M-1994			DRAWN BY BRAD SCHROEDER	DATE 11-25-01
FOR REFERENCE		APPROVALS/MFG	CHECKED BY	DATE
ORIGINAL C.R.	PRODUCT LINE NO.	AW/PS ANALYSIS EB	REF DWG	REF SPEC
9000000-55	9000000-55001			
NEXT ASSY	USED ON (SYS)			
APPLICATION				
TITLE CIRCUIT CARD ASSEMBLY - 4MCU INTERCONNECT, A1		APPROVALS/ENG	APPROVALS/QE	DATE
SIZE	CAGE CODE	DRAWING NO.	REV	
SCALE NONE	E11WYD3	9000010-001	H	
SHEET 1 OF 17				

NO. 9000010-001

REV. NO.		DESCRIPTION	DATE
5208	F	SEE DESCRIPTION PER CHANGE REQUEST.	07-18-02
5580	G	SEE DESCRIPTION PER CHANGE REQUEST.	11-06-02



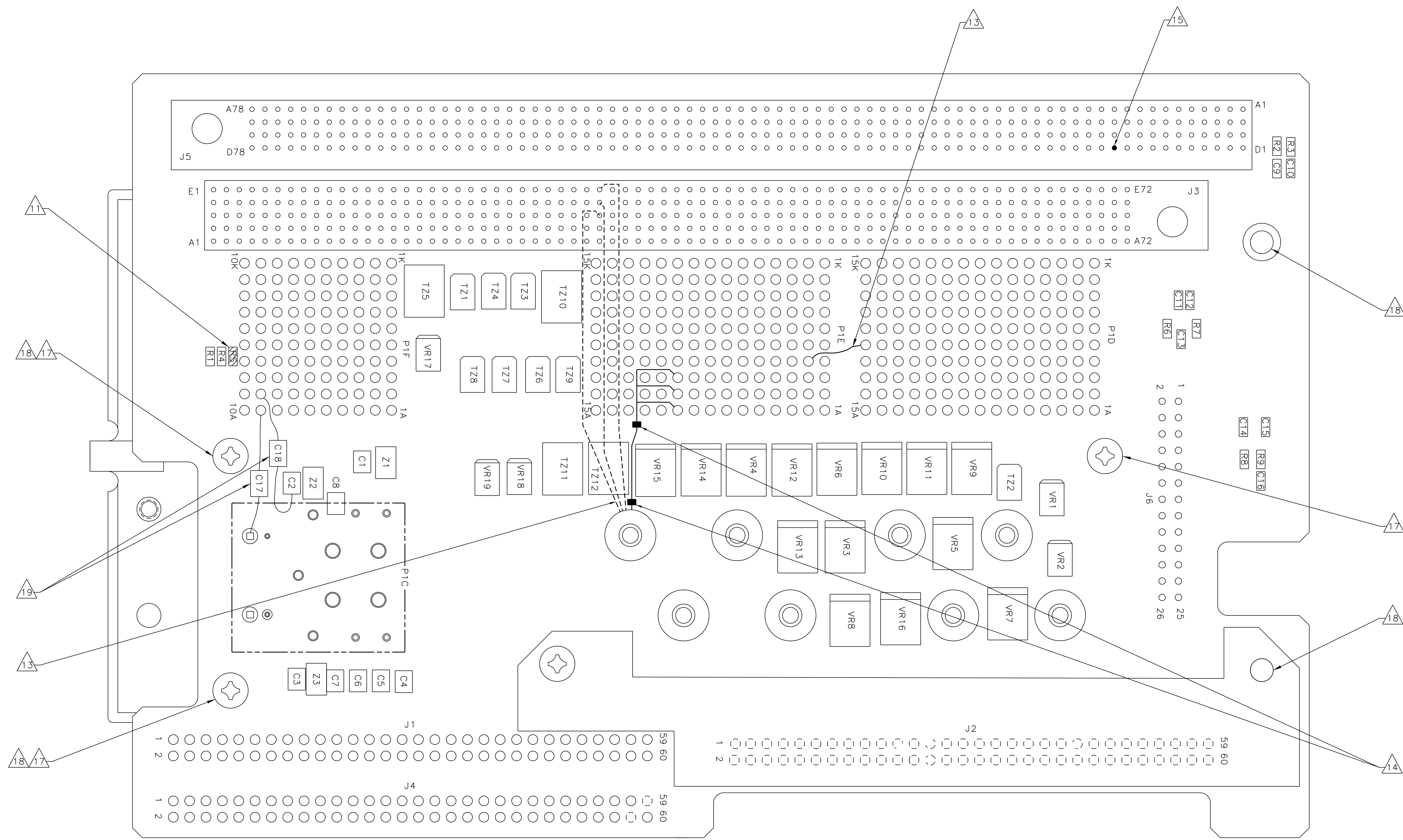
SECTION A-A

TABLE II

INSTALLATION ORDER \triangle

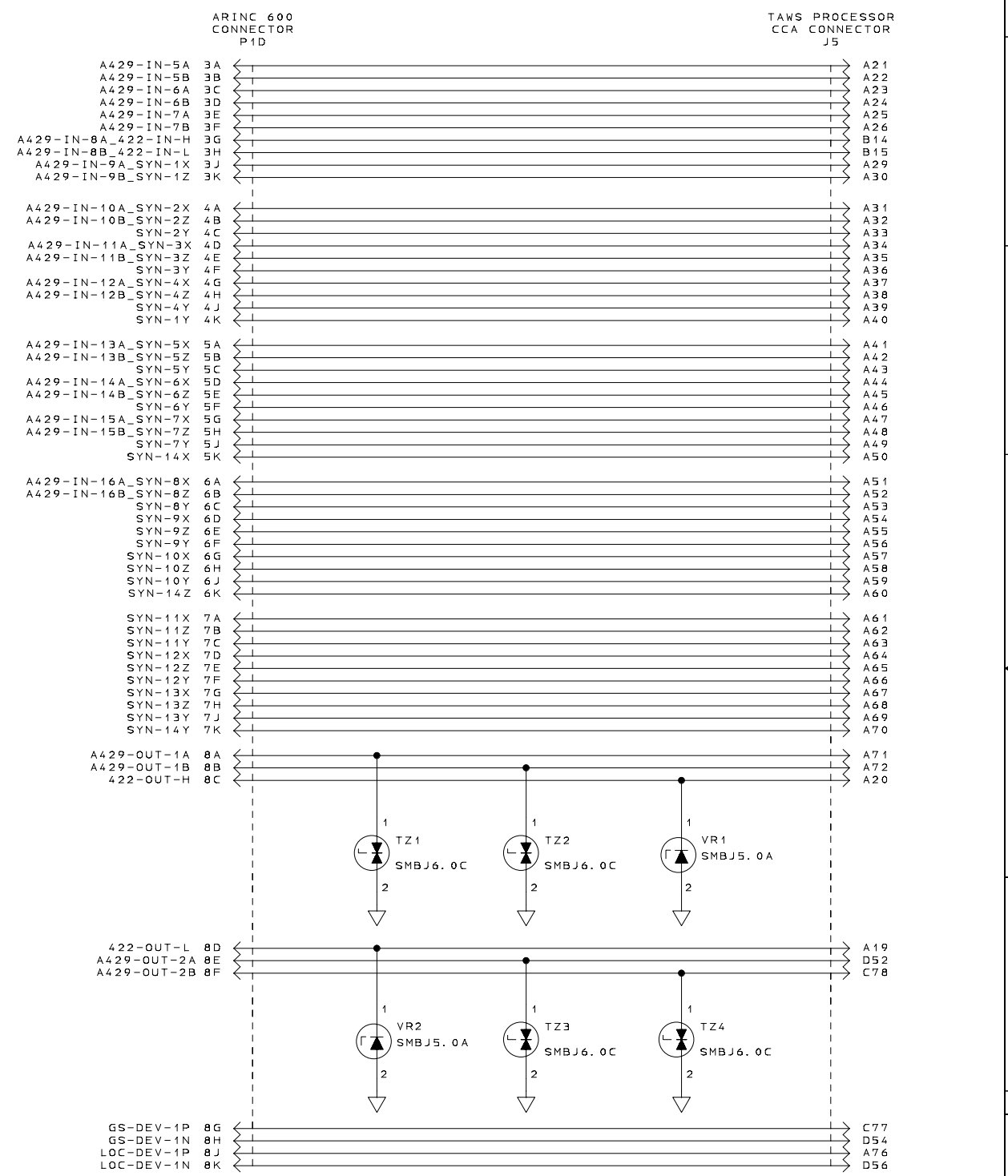
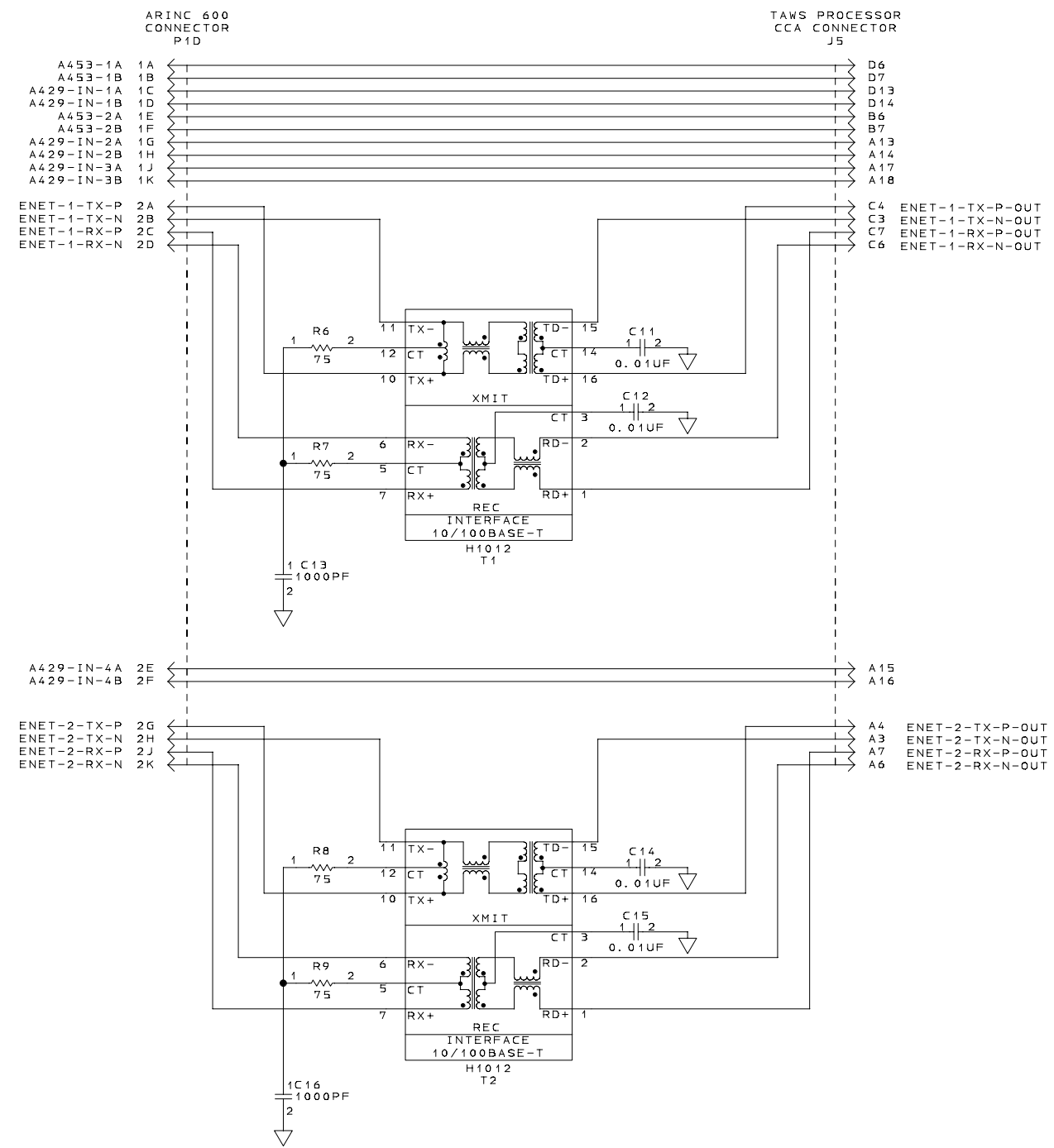
1	W8
2	W7
3	W6
4	W3
5	W4
6	W2
7	W5
8	W1

REV. NO.		DESCRIPTION	DATE
5208	F	SEE DESCRIPTION PER CHANGE REQUEST.	07-18-02
5580	G	SEE DESCRIPTION PER CHANGE REQUEST.	11-06-02
5740	H	SEE DESCRIPTION PER CHANGE REQUEST.	12-18-02



VIEWING SIDE A

REV		DESCRIPTION	DATE
5208	F	CHANGED BORDER.	07-18-02
5778	H	J5-A27, CONNECTED FROM P1D-3G, CHANGED TO J5-B14. J5-B14, CONNECTED FROM P1D-3H, CHANGED TO J5-B15. J5-B15, CONNECTED FROM P1D-3J, CHANGED TO J5-A29.	12-18-02



NOTES:
 UNLESS OTHERWISE SPECIFIED:
 1. ALL CAPACITANCE VALUES ARE IN MICROFARADS.
 2. ALL RESISTANCE VALUES ARE IN OHMS.
 3. ALL INDUCTANCE VALUES ARE IN MICROHENRIES.
 4. PARTIAL REFERENCE DESIGNATIONS ARE SHOWN;
 FOR COMPLETE DESIGNATIONS PREFIX PART
 DESIGNATION WITH SUBASSEMBLY DESIGNATION.
 5. INTERPRET DRAWING PER ANSI Y32.2-1975 AND
 ANSI/IEEE STD 991-1986. LOGIC SYMBOLS
 CONFORM TO ANSI/IEEE STD 91-1984.

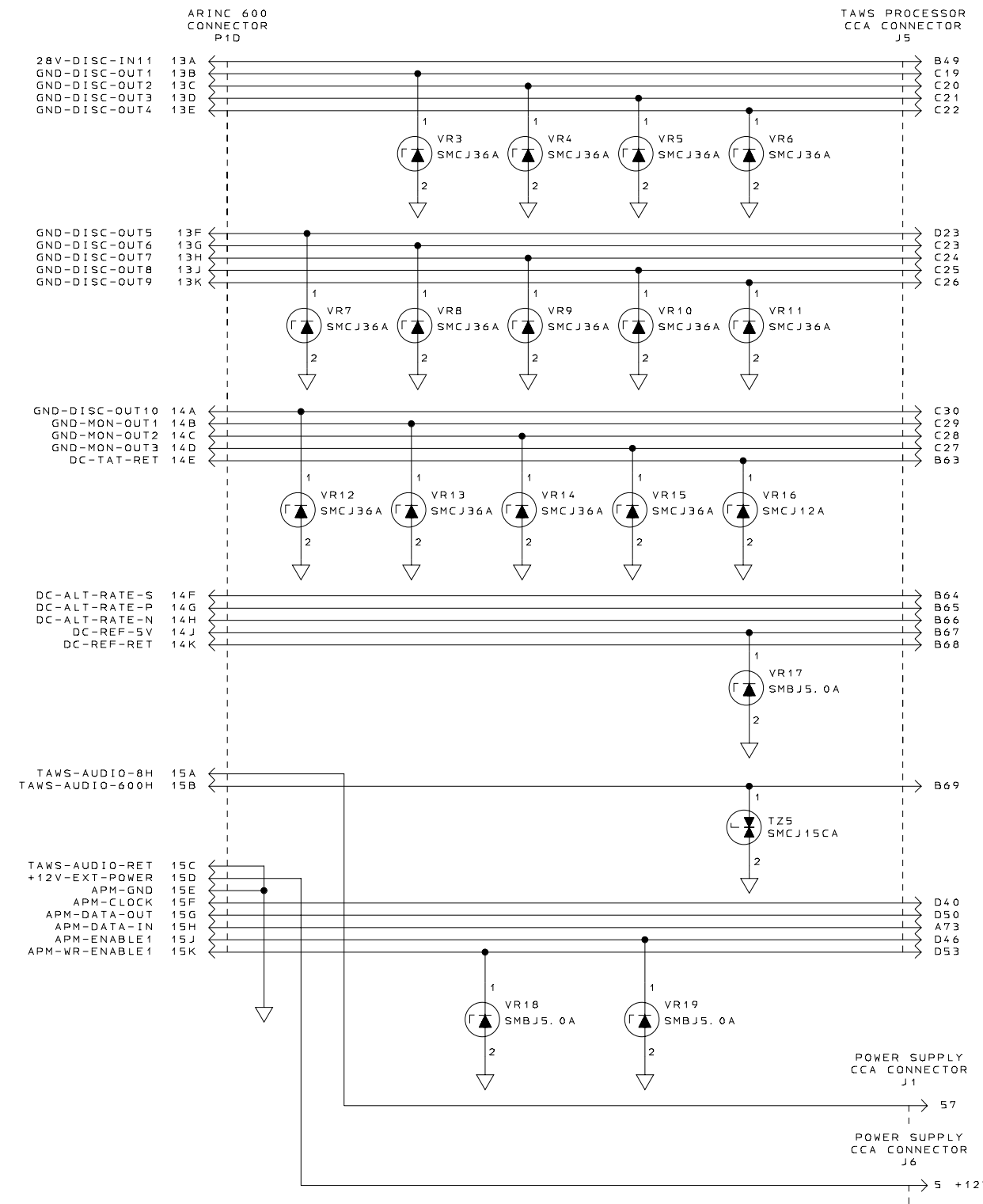
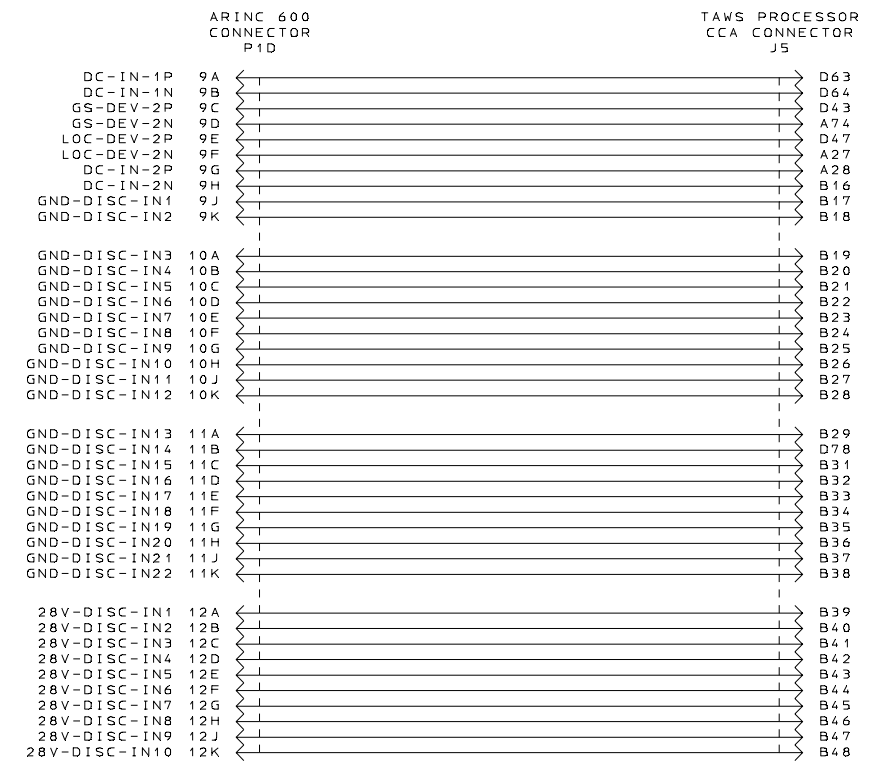
ARINC 600 CONNECTOR
 A1 INTERCONNECT CCA
 SCHEMATIC DIAGRAM SHEET NO. 1 OF 14

COMPUTER GENERATED

ACSS	SEE FIRST SHEET FOR CONTRACT NUMBER. USE OR DISCLOSURE OF INFORMATION ON THIS SHEET IS SUBJECT TO THE RESTRICTIONS ON THE FIRST SHEET OF THIS DOCUMENT.	SIZE CAGE CODE E 1WYD3	DRAWING NO. 9000010-001	REV H
------	--	---------------------------	----------------------------	----------

7, INCH DATE TIME

REV		DESCRIPTION	DATE
5208	F	CHANGED BORDER.	07-18-02

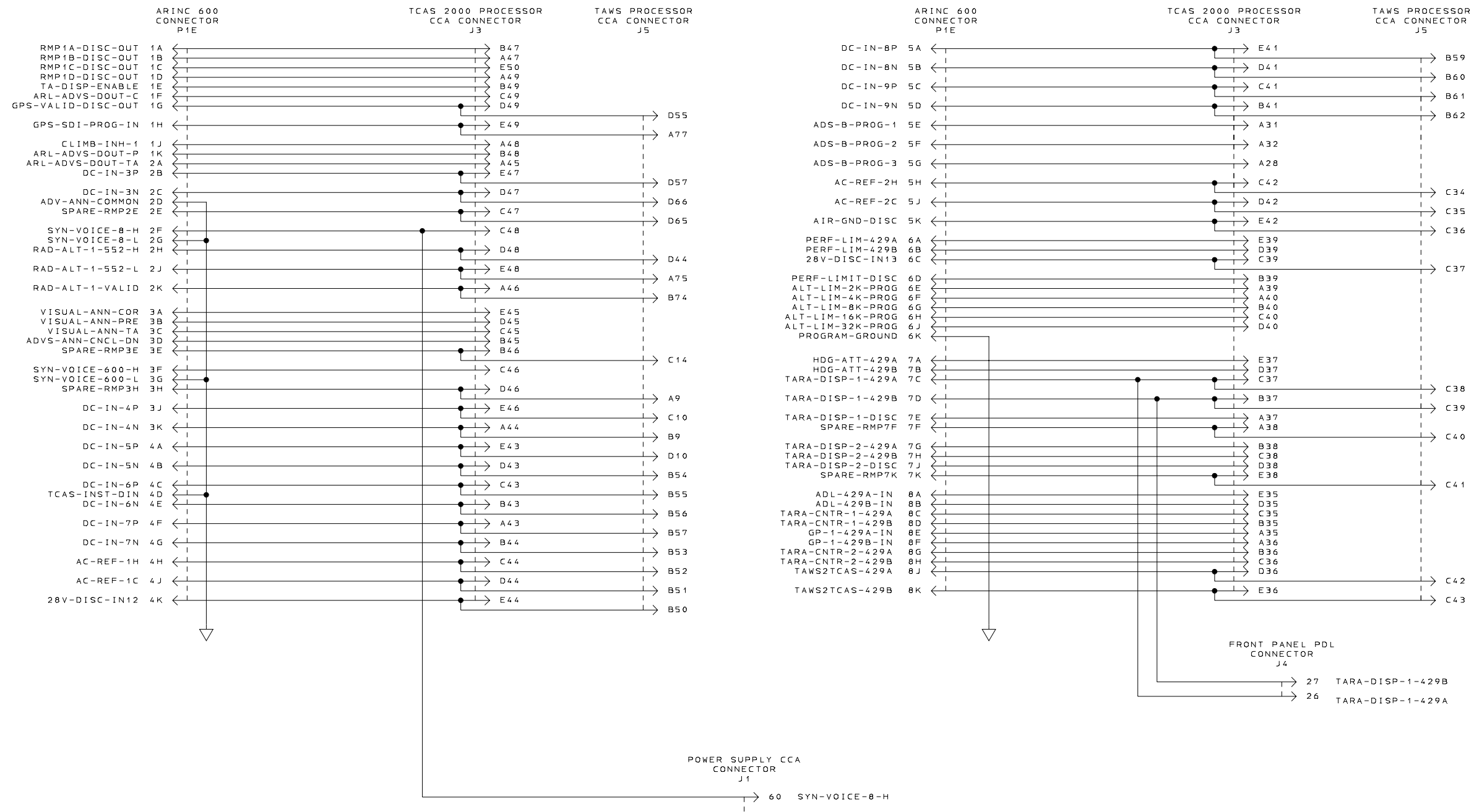


ARINC 600 CONNECTOR
A1 INTERCONNECT CCA
SCHEMATIC DIAGRAM SHEET NO. 2

COMPUTER GENERATED

ACSS	SEE FIRST SHEET FOR CONTRACT NUMBER. USE OR DISCLOSURE OF INFORMATION ON THIS SHEET IS SUBJECT TO THE RESTRICTIONS ON THE FIRST SHEET OF THIS DOCUMENT.	SIZE E	CAGE CODE 1WYD3	DRAWING NO. 9000010-001	REV F
SCALE				SHEET 5	DATE/TIME

REV		DESCRIPTION	DATE
5208	F	CHANGED BORDER.	07-18-02



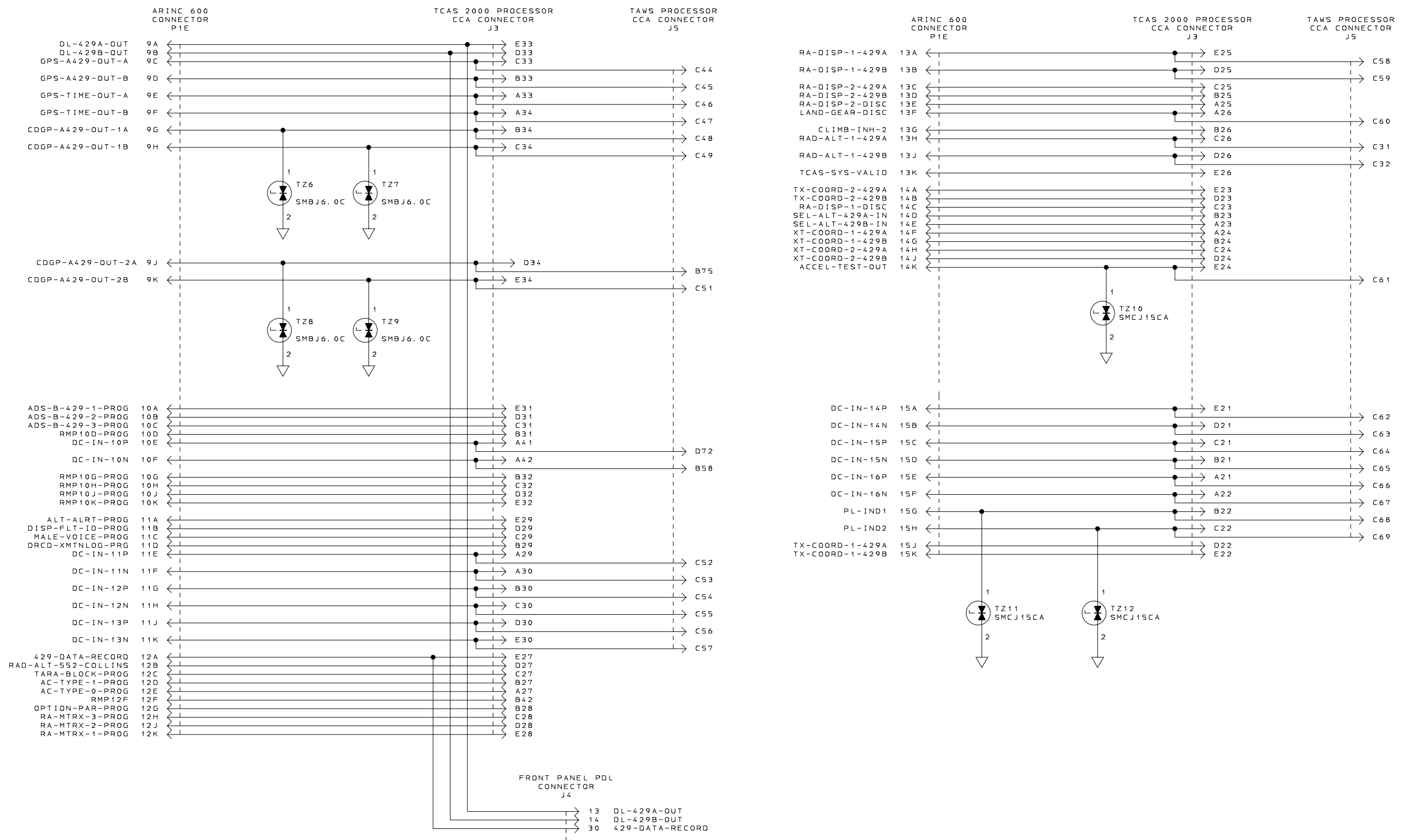
ARINC 600 CONNECTOR
A1 INTERCONNECT CCA
SCHEMATIC DIAGRAM SHEET NO. 3

COMPUTER GENERATED

ACSS	SEE FIRST SHEET FOR CONTRACT NUMBER, USE OR DISCLOSURE OF INFORMATION ON THIS SHEET IS SUBJECT TO THE RESTRICTIONS ON THE FIRST SHEET OF THIS DOCUMENT.	SIZE	E 1WYD3	CAGE CODE	9000010-001	DRAWING NO.	REV	F
							SCALE	SHEET 6

DATE/TIME 9:15 10-01-000006

REV		DESCRIPTION	DATE
5208	F	CHANGED BORDER.	07-18-02



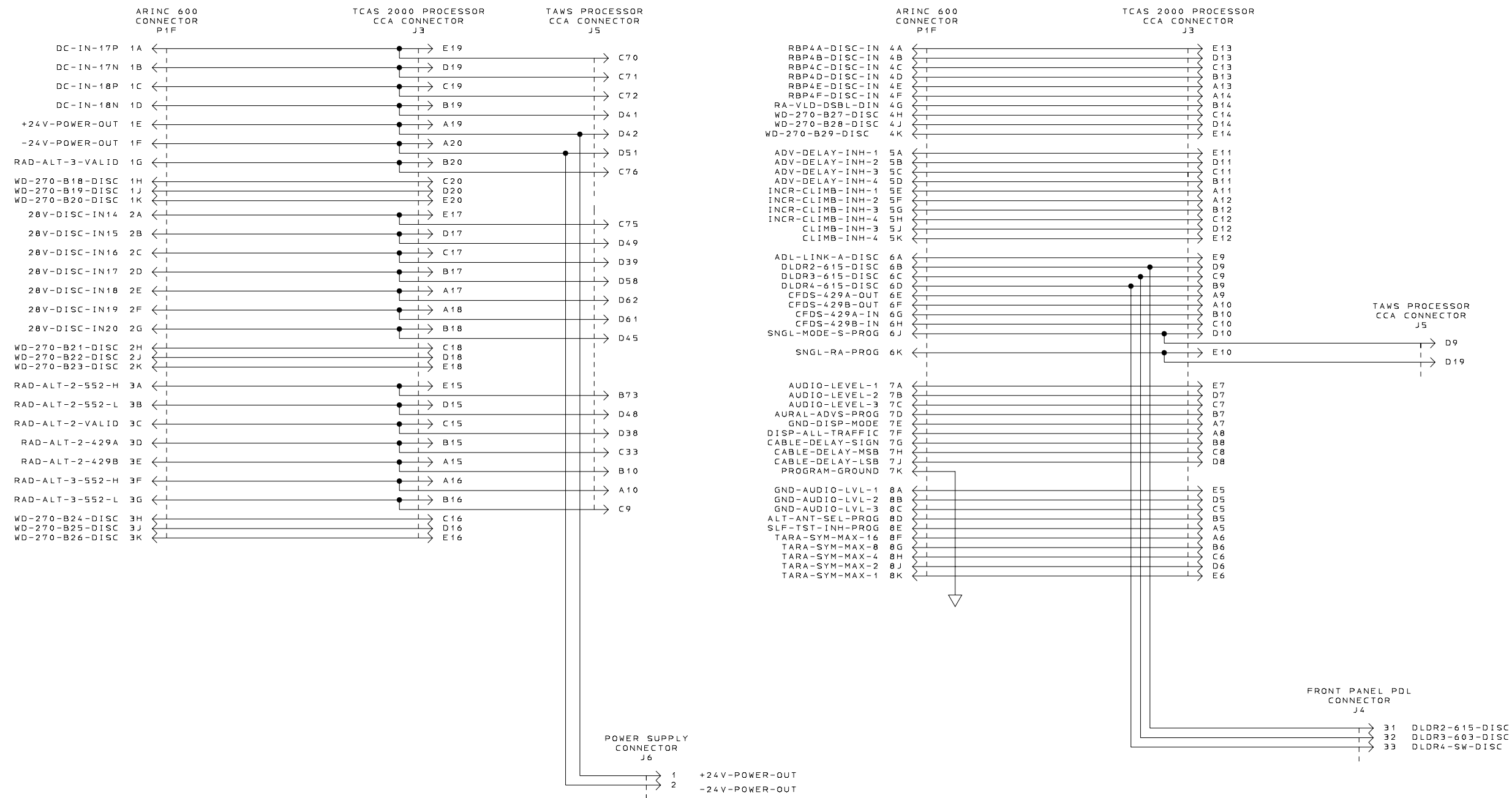
ARINC 600 CONNECTOR
A1 INTERCONNECT CCA
SCHEMATIC DIAGRAM SHEET NO. 4

COMPUTER GENERATED

ACSS	SEE FIRST SHEET FOR CONTRACT NUMBER. USE OR DISCLOSURE OF INFORMATION ON THIS SHEET IS SUBJECT TO THE RESTRICTIONS ON THE FIRST SHEET OF THIS DOCUMENT.	SIZE: E 1WYD3	CAGE CODE: 9000010-001	DRAWING NO.:	REV. F
------	---	---------------	------------------------	--------------	--------

DATE TIME

REV		DESCRIPTION	DATE
5208	F	CHANGED BORDER.	07-18-02



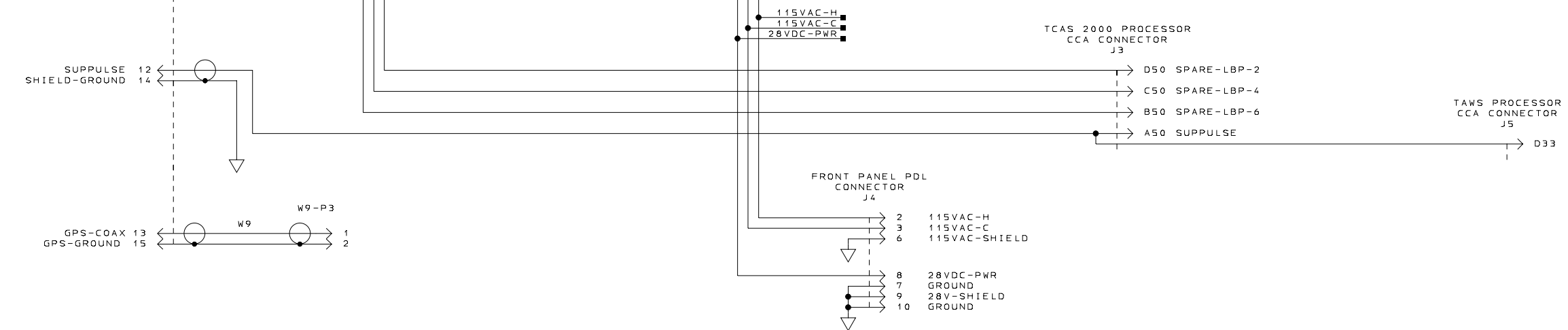
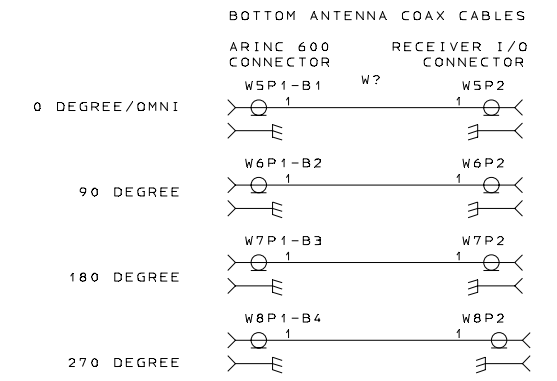
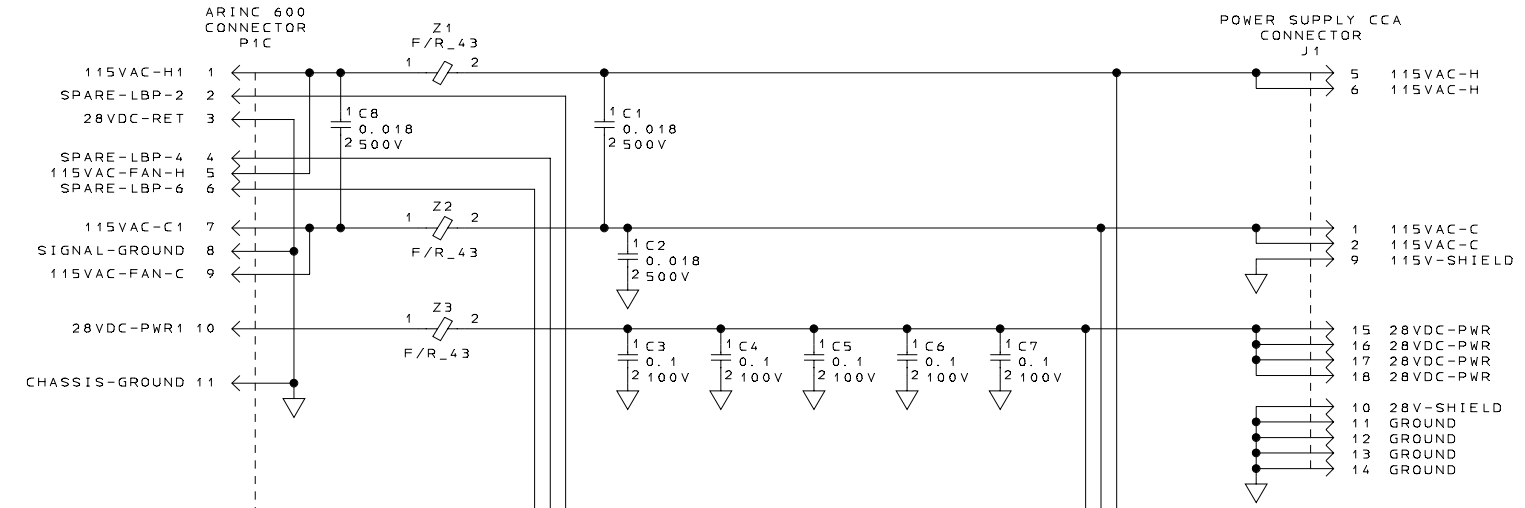
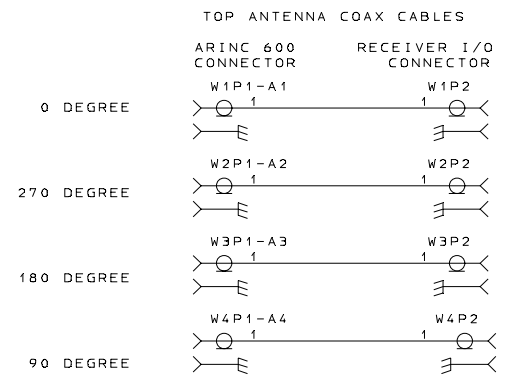
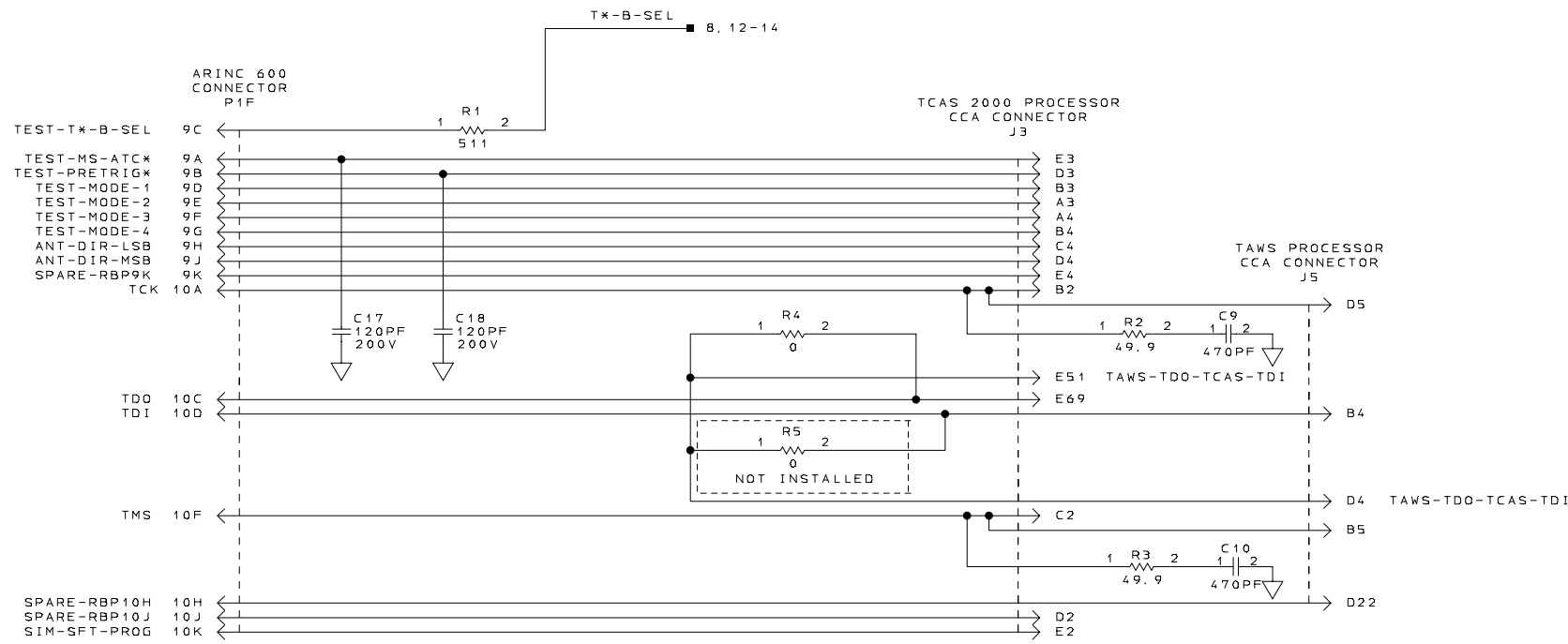
ARINC 600 CONNECTOR
A1 INTERCONNECT CCA
SCHEMATIC DIAGRAM SHEET NO. 5

COMPUTER GENERATED

ACSS	SEE FIRST SHEET FOR CONTRACT NUMBER, USE OR DISCLOSURE OF INFORMATION ON THIS SHEET IS SUBJECT TO THE RESTRICTIONS ON THE FIRST SHEET OF THIS DOCUMENT.	SIZE	E 1WYD3	DRAWING NO.	9000010-001	REV	F
						SHEET	8

9000010-01000006 07-18-02

REV		DESCRIPTION	DATE
5208	F	CHANGED BORDER.	07-18-02
5580	G	ADDED C17 AND CONNECTED IT BETWEEN P1F-9A AND GROUND. ADDED C18 AND CONNECTED IT BETWEEN P1F-9B AND GROUND.	11-06-02



ARINC 600 CONNECTOR
A1 INTERCONNECT CCA
SCHEMATIC DIAGRAM SHEET NO. 6

COMPUTER GENERATED

ACSS	SEE FIRST SHEET FOR CONTRACT NUMBER. USE OR DISCLOSURE OF INFORMATION ON THIS SHEET IS SUBJECT TO THE RESTRICTIONS ON THE FIRST SHEET OF THIS DOCUMENT.	SIZE CAGE CODE E 1WYD3	DRAWING NO. 9000010-001	REV G
------	--	---------------------------	----------------------------	----------

6 INCH 100-0100006 DR SHEET 9