

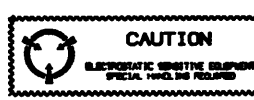
PROPRIETARY NOTICE  
 THIS DOCUMENT AND THE INFORMATION DISCLOSED HEREIN ARE PROPRIETARY DATA OF HONEYWELL INC. NEITHER THIS DOCUMENT NOR THE INFORMATION CONTAINED HEREIN SHALL BE REPRODUCED, USED, OR DISCLOSED TO OTHERS WITHOUT THE WRITTEN AUTHORIZATION OF HONEYWELL INC.

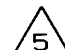
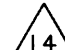
NOTICE  
 FREEDOM OF INFORMATION ACT (5 USC 552) AND DISCLOSURE OF CONFIDENTIAL INFORMATION GENERALLY (18 USC 1905)  
 THIS DOCUMENT IS BEING FURNISHED IN CONFIDENCE BY HONEYWELL INC. THE INFORMATION DISCLOSED HEREIN FALLS WITHIN EXEMPTION (b) (4) OF 5 USC 552 AND THE PROHIBITIONS OF 18 USC 1905.

REVISIONS				
ZONE	REV	DESCRIPTION	DATE	APPROVED
		INITIAL RELEASE, INCLUDING REV XA THRU XE.	08APR97	G.BEILER
A		TITLE BLOCK: "USED ON (SYS)" NUMBER WAS 4066010. SH IDX REV. PL AFFECTED. 06302 (U)	10NOV97	C.DOSALL
		USE ALL PARTS IN-HOUSE, IN STOCK AND CURRENTLY ON ORDER (EFFECTIVITY IS NEXT BUY).		M.BROWN M.MOREAU
B		NOTES: ADD NOTE 18. "FIRST USED ON" NUMBER WAS 4066010. SH IDX REV. PL AFFECTED. 06303 (U)	10NOV97	C.DOSALL
		AFFECTS PARTS IN HOUSE IN STOCK AND ON ORDER.		M.BROWN R.RICHARDS
C		NOTES: ADD NOTE 19. SH IDX REV. PL AFFECTED. 06578 (U)	10NOV97	C.DOSALL
		USE ALL PARTS IN HOUSE, IN STOCK AND CURRENTLY ON ORDER (EFFECTIVITY IS NEXT BUY).		M.BROWN R.RICHARDS
D		NOTES: ADD NOTE 20. SH IDX REV. PL AFFECTED. 09386 (U)	09FEB98	C.DOSALL
		USE ALL PARTS IN-HOUSE, IN STOCK AND CURRENTLY ON ORDER (EFFECTIVITY IS NEXT BUY).		M.BROWN C.FLORENCE
E		SH IDX REV. PL AFFECTED. 09604 (U)	08MAY98	D. ZINDER
		USE ALL PARTS IN-HOUSE, IN STOCK AND CURRENTLY ON ORDER (EFFECTIVITY IS NEXT BUY).		R.RICHARDS L.WHITSLER
F		NOTES: NOTE 1 WAS ASSEMBLE---EXCEPT: A. SOLDER---705. B. SOLDER---704. REV NOTES 3, 4, 8 THRU 11, 13 AND 15 THRU 20. NOTE 5 WAS USE---(ITEM 1)---(ITEM 5). NOTE 12. REV 2 PLACES. SHEET WAS 1 OF 11. SH IDX REV. PL AFFECTED. 78195 (U)	22 SEPT 98	R. REISBECK
		USE ALL PARTS IN-HOUSE, IN STOCK AND CURRENTLY ON ORDER (EFFECTIVITY IS NEXT BUY).		R. REISBECK

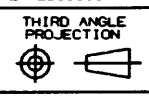
NOTES:

1. ASSEMBLE AND SOLDER PER ITEM 701. EXCEPT: SOLDER: USE ITEM 704.

2.  THIS ASSEMBLY INCLUDES COMPONENTS WHICH ARE SUBJECT TO DAMAGE BY ELECTROSTATIC CHARGES; THEREFORE, ALL COMPONENTS SHALL BE HANDLED IN ACCORDANCE WITH GUIDELINES FOR ELECTROSTATIC DISCHARGE CONTROL.

- ~~3.~~
- ~~4.~~
- 5.  USE ITEM 703 TO FORM W1. PRE-CUT LENGTH OF W1 SHALL BE .110 ± .025. ATTACH FROM PWB TO A3A1E1 (ITEM 2) AS SHOWN USING ITEM 704.
- ~~6.~~
- ~~7.~~
- ~~8.~~
- ~~9.~~
- ~~10.~~
- ~~11.~~
- 12. APPLY IDENTIFICATION LABEL AS SHOWN ON SHEET 2.
- ~~13.~~
- 14.  APPLY ITEM 706 TO THE THREADS OF ITEM 11 PER ITEM 707, AFTER TUNING FILTER (ITEM 2).
- ~~15.~~
- ~~16.~~
- ~~17.~~
- ~~18.~~
- ~~19.~~
- ~~20.~~

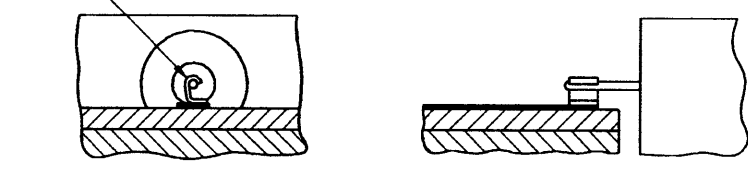
REV STATUS OF PARTS LIST SHALL BE SAME AS BASIC DRAWING NUMBER SEE SEPARATE PARTS LISTS

45 44 43 42 41 40 39 38 37 36 35 34 33 32 31 30 29 28 27 26 25 24 23 22 21 20 19 18 17 16 15 14 13 12 11 10 9 8 7 6 5 4 3 2 1 SHEET		CONTRACT RT-950/1		OPERATIONAL NOTE	
FOR HONEYWELL REFERENCE		INTERPRET DIMENSIONS AND TOLERANCES PER ANSI Y14.3M-1982		DRAWN BY D.ALLEN DATE 08APR97	
MFG REF NO. DPA NO. A-17793		MATERIAL PROCESS FINISH MILITARY DESIGNATION		DESIGNED BY D.ALLEN DATE 08APR97	
PRODUCT LINE NO. 3841		PROCESS, FINISH, SEE 00.40.		CHECKED BY E.THIESSEN DATE 08APR97	
AW/PS ANALYSIS EB 4054939		ITEM CODE (PER EB699394) 3		APVD FOR MFG P.MILLSAP DATE 08APR97	
REF DWG REF SPEC		THIRD ANGLE PROJECTION		APVD FOR GE DATE	
				APVD FOR ENGRG C.DOSALL DATE 08APR97	
7517900		FINISH		APVD FOR ENGRG T.EUROPA DATE 08APR97	
NEXT ASSY USED ON (SYS)				APVD FOR DATE	
APPLICATION		FIRST USED ON 7517900		TITLE	
				CIRCUIT CARD ASSEMBLY-XMTR A3	
				DRAWING NO. 7517935-902	
				SCALE NONE UNIT W1 SHEET 1 OF 2	

7517935-902

REVISIONS				
ZONE	REV	DESCRIPTION	DATE	APPROVED
	B	LOTO VIEW, ADD DETAIL G. SEE SHEET 1	963031(M) 10NOV97	C. DOSDALL M. BROWN R. RICHARDS
	C	LOTO VIEW, ADD DETAIL H. SEE SHEET 1	99579(U) 10NOV97	C. DOSDALL R. RICHARDS
	D	LOTO VIEW, ADDED NOTE CALLOUT 20. (RAW REF DES. 21). SEE SHEET 1	99396(U) 07FEB98	C. DOSDALL M. BROWN C. FLORENCE
	F	PICTORIAL EXTENSIVELY REVISED. SEE SHEET 1	78155(U) 2/98	R. RETZBECK

ATTACH SILVER RIBBON (ITEM 703) TO PWB AND WRAP AROUND A3A1E1.



SECTION E-E  $\triangle 5$   
SCALE: NONE

