



T²CAS FCC Compliance Test Report

CAGE Code 1WYD3	Initial Release Date 16-Jan-03	Revision Date	Document Number 8000709-001	Revision -
---------------------------	-----------------------------------	---------------	--------------------------------	---------------

Proprietary Notice

This document and the information disclosed herein are proprietary data of Aviation Communication & Surveillance Systems. Neither this document nor the information contained herein shall be reproduced, used, or disclosed to others without the written authorization of Aviation Communication & Surveillance Systems.

Notice

Freedom of Information Act (5 USC 552) and Disclosure of Confidential Information Generally (18 USC 1905)

This document is being furnished in confidence by Aviation Communication & Surveillance Systems. The information disclosed herein falls within exemption (b) (4) of 5 USC 552 and the prohibitions of 18 USC 1905.

Record of Revisions

<u>Rev</u>	<u>Date</u>	<u>Authorization</u>	<u>Description of Change</u>
-	16-Jan-03	N/A	Initial Release

TABLE OF CONTENTS

1 INTRODUCTION 1

2 APPLICABLE T²CAS UNIT PART NUMBERS 2

2.1 REFERENCES 2

2.1.1 FAA DOCUMENTS 2

2.1.2 RTCA DOCUMENTS 2

2.1.3 ARINC DOCUMENTS 3

2.1.4 FCC DOCUMENTS 3

2.1.5 ACSS DOCUMENTS 3

2.2 ACRONYMS AND ABBREVIATIONS 3

3 GENERAL INFORMATION 5

3.1 TYPE DESIGNATION 5

3.2 SERVICE AND RULE FOR INTENDED OPERATION 5

3.3 DESCRIPTION OF EQUIPMENT 5

3.3.1 TAWS/WINDSHEAR FUNCTIONALITY 5

3.3.2 TCAS FUNCTIONALITY 5

3.3.2.1 TYPE OF EMISSION 5

3.3.2.2 FREQUENCY RANGE 5

3.3.2.3 POWER RATING 6

3.3.2.4 FINAL POWER AMPLIFIER 6

3.3.2.5 ACTIVE DEVICE FUNCTIONS 6

3.3.3 CIRCUIT DIAGRAM 7

3.3.4 INSTRUCTION BOOK 7

3.3.5 TUNE-UP PROCEDURE 7

3.3.6 OSCILLATOR CIRCUIT 7

3.3.7 FREQUENCY STABILIZATION 7

3.3.8 MODULATION LIMITING 7

3.3.9 RADIATED INTERFERENCE SUPPRESSION 7

4 MODULATION DETAILS 9

4.1 ATCRBS INTERROGATIONS 9

4.2 MODE S INTERROGATIONS 10

5 DRAWINGS AND PHOTOGRAPHS 14

5.1 DRAWINGS 14

5.2 PHOTOGRAPHS 14

6 FCC COMPLIANCE TEST PLAN 30

6.1 FCC COMPLIANCE OVERVIEW 30

6.1.1 FCC IDENTIFIER 30

6.1.2 CHANGES IN CERTIFIED EQUIPMENT 30

6.2 T²CAS UNITS SIMILARITY TO PREDECESSOR TCAS-2000 UNIT 31

6.3 T²CAS MODEL TO BE SUBJECTED TO FCC COMPLIANCE TESTING 31

6.4 ALL THREE T²CAS MODELS CONSIDERED IDENTICAL 31

6.4.1 CONCLUSION 31

7 TEST DATA AND FACILITIES 32

8 FCC COMPLIANCE TESTS 33

8.1 RF POWER OUTPUT 33

8.1.1 RF POWER OUTPUT TEST EQUIPMENT REQUIRED 33

8.1.2 RF POWER OUTPUT TEST SETUP 33

8.1.3	RF POWER OUTPUT TEST PROCEDURE	33
8.1.4	RF POWER OUTPUT TEST DATA	34
8.2	MODULATION CHARACTERISTICS	34
8.2.1	MODULATION CHARACTERISTICS TEST EQUIPMENT REQUIRED	34
8.2.2	MODULATION CHARACTERISTICS TEST SETUP.....	35
8.2.3	MODULATION CHARACTERISTICS TEST PROCEDURE	35
8.2.4	MODULATION TEST DATA.....	36
8.3	OCCUPIED BANDWIDTH AND IN CLOSE SPURIOUS	38
8.3.1	OCCUPIED BANDWIDTH TEST EQUIPMENT REQUIRED	38
8.3.2	OCCUPIED BANDWIDTH AND IN CLOSE TEST SETUP	38
8.3.3	OCCUPIED BANDWIDTH AND IN CLOSE TEST PROCEDURE	38
8.3.4	OCCUPIED BANDWIDTH AND IN CLOSE SPURIOUS TEST DATA.....	39
8.4	SPURIOUS EMISSIONS AT ANTENNA TERMINALS	41
8.4.1	SPURIOUS EMISSIONS AT ANTENNA TERMINALS (0 – 2000 MHz).....	42
8.4.1.1	SPURIOUS EMISSIONS AT ANTENNA TERMINALS (0 – 2000 MHz) TEST EQUIPMENT REQUIRED ..	42
8.4.1.2	SPURIOUS EMISSIONS AT ANTENNA TERMINALS (0 – 2000 MHz) TEST SETUP.....	42
8.4.1.3	SPURIOUS EMISSIONS AT ANTENNA TERMINALS (0 – 2000 MHz) TEST PROCEDURE	42
8.4.1.4	SPURIOUS EMISSIONS AT ANTENNA TERMINALS (0-2000 MHz) TEST DATA	43
8.4.2	SPURIOUS EMISSIONS AT ANTENNA TERMINALS (2000 - 11330 MHz) TEST EQUIPMENT REQUIRED	48
8.4.2.1	SPURIOUS EMISSIONS AT ANTENNA TERMINALS (2000 - 11330 MHz) TEST SETUP.....	48
8.4.2.2	SPURIOUS EMISSIONS AT ANTENNA TERMINALS (2000 - 11330 MHz) TEST PROCEDURE.....	49
8.4.2.3	SPURIOUS EMISSIONS AT ANTENNA TERMINALS (2000 - 11330 MHz) TEST DATA.....	49
8.4.3	SPURIOUS EMISSIONS AT ANTENNA TERMINALS LOCAL OSCILLATOR LEAKAGE (1030 MHz).....	55
8.4.3.1	SPURIOUS EMISSIONS AT ANTENNA TERMINALS L.O. LEAKAGE (1030 MHz) TEST EQUIPMENT REQUIRED 55	
8.4.3.2	SPURIOUS EMISSIONS AT ANTENNA L.O. LEAKAGE (1030 MHz) TEST SETUP.....	56
8.4.3.3	SPURIOUS EMISSIONS AT ANTENNA L.O. LEAKAGE (1030 MHz) TEST PROCEDURE.....	56
8.4.3.4	SPURIOUS EMISSIONS AT ANTENNA L.O. LEAKAGE (1030 MHz) TEST DATA	56
8.5	FIELD STRENGTH OF SPURIOUS RADIATION	57
8.5.1	FIELD STRENGTH OF SPURIOUS RADIATION	58
8.5.1.1	FIELD STRENGTH OF SPURIOUS RADIATION TEST EQUIPMENT REQUIRED.....	58
8.5.1.2	FIELD STRENGTH OF SPURIOUS RADIATION TEST SETUP	58
8.5.2	FIELD STRENGTH OF SPURIOUS RADIATION TEST PROCEDURE	59
8.5.3	FIELD STRENGTH OF SPURIOUS RADIATION TEST DATA	59
8.5.3.1	TT-951 (4MCU) RADIATED TEST DATA	59
8.5.3.2	TT-951 (4MCU) CONDUCTED TEST DATA	59
8.6	FREQUENCY STABILITY.....	59
8.6.1	FREQUENCY STABILITY (TEMPERATURE VARIATION).....	59
8.6.1.1	FREQUENCY STABILITY (TEMPERATURE VARIATION) TEST EQUIPMENT REQUIRED.....	59
8.6.1.2	FREQUENCY STABILITY (TEMPERATURE VARIATION) TEST SETUP	60
8.6.1.3	FREQUENCY STABILITY (TEMPERATURE VARIATION) TEST PROCEDURE	60
8.6.2	FREQUENCY STABILITY (PRIMARY POWER VARIATION)	61
8.6.2.1	FREQUENCY STABILITY (PRIMARY POWER VARIATION) TEST EQUIPMENT REQUIRED.....	61
8.6.2.2	FREQUENCY STABILITY (PRIMARY POWER VARIATION) TEST SETUP	61
8.6.2.3	FREQUENCY STABILITY (PRIMARY POWER VARIATION) TEST PROCEDURE.....	62
9	APPENDIX A: TT-951 (4MCU) RADIATED EMISSIONS	63
9.1	CLASS B SPURIOUS EMISSIONS (RADIATED).....	63
9.1.1	CLASS B SPURIOUS EMISSIONS (RADIATED) MODE 2 (TRANSMITTING)	63
9.1.2	CLASS B SPURIOUS EMISSIONS (RADIATED) STANDBY MODE (NON-TRANSMITTING).....	69
10	APPENDIX B: TT-951 (4MCU) CONDUCTED EMISSIONS	74

List of Figures

Figure 1: ATCRBS Interrogations 9

Figure 2: Mode S Interrogations 10

Figure 3: Unit Front Name Plate 15

Figure 4: Unit Front With Name Plate Showing 16

Figure 5: Unit Rear With ARINC Connector 17

Figure 6: View of Unit Side, Cover Removed, Showing A8 GPS and A5 Receiver – I/O Assembly ...**Error!**
Bookmark not defined.

Figure 7: View of Unit Side With A7 TAWS Processor Showing 19

Figure 8: View of Unit Side, A7 TAWS Removed, A2 Processor Assembly Showing 20

Figure 9: View of Unit Side, A8 GPS Removed, Showing A5 Receiver - I/O Assembly with Shield 21

Figure 10: View of Unit Side With A5 Receiver Hinged Outward, Showing A4 Power Supply/Modulator
 Assembly 22

Figure 11: View of Unit Side with A2 Processor Removed Showing A3 Transmitter Assembly With Cover
 23

Figure 12: View of Unit Side, A5 Receiver and Front Panel Removed, Showing A4 Power
 Supply/Modulator Assembly 24

Figure 13: View of Unit Side, A4 Power Supply/Modulator Assembly Removed, Showing A1 Interconnect
 Assembly 25

Figure 14: View of A3 Transmitter Assembly With Shield Removed 26

Figure 15: View of A5 Receiver – I/O Assembly with Shield Removed. Side A 27

Figure 16: View of A5 Receiver – I/O Assembly with Cover Removed. Side B 28

Figure 17: View of A7 TAWS Processor With Bracket Attached 29

Figure 18: RF Power Output Test Setup 33

Figure 19: Modulation Characteristics Test Setup 35

Figure 20: Typical ATCRBS or Mode S Interrogation Pulse Showing Rise and Fall Times 36

Figure 21: Mode S Interrogation With DPSK Modulation 36

Figure 22: Close Up of Mode S Interrogation Preamble and Sync Phase Reversal 37

Figure 23: ATCRBS Mode C Interrogation 37

Figure 24: Occupied Bandwidth Test Setup 38

Figure 25: In Close Spurious: 5 MHz/Div 41

Figure 26: Spurious Emissions at Antenna Terminals (0 – 2000 MHz) Test Setup 42

Figure 27: 0 – 200 MHz Frequency Span 43

Figure 28: 200 – 400 MHz Frequency Span 44

Figure 29: 400 – 600 MHz Frequency Span 44

Figure 30: 600 – 800 MHz Frequency Span 45

Figure 31: 800 – 1000 MHz Frequency Span 45

Figure 32: 1000 – 1200 MHz Frequency Span 46

Figure 33: 1200 – 1400 MHz Frequency Span 46

Figure 34: 1400 – 1600 MHz Frequency Span 47

Figure 35: 1600 – 1800 MHz Frequency Span 47

Figure 36: 1800 – 2000 MHz Frequency Span 48

Figure 37: Spurious Emissions at Antenna Terminals (2000 - 11330 MHz) Test Setup 49

Figure 38: 2nd Harmonic 50

Figure 39: 3rd Harmonic 51

Figure 40: 4th Harmonic 51

Figure 41: 5th Harmonic 52

Figure 42: 6th Harmonic 52

Figure 43: 7th Harmonic 53

Figure 44: 8th Harmonic 53

Figure 45: 9th Harmonic 54

Figure 46: 10th Harmonic 54

Figure 47: 11th Harmonic 55

Figure 48: Spurious Emissions at Antenna Local Oscillator Leakage (1030 MHz) Test Setup 56

Figure 49: Top Antenna L.O. Leakage 56

Figure 50: Bottom Antenna L.O. Leakage 57

Figure 51: Field Strength of Spurious Radiation Test Setup 59

Figure 52: Frequency Stability (Temperature Variation) Test Setup 60

Figure 53: Frequency Stability (Primary Power Variation) Test Setup 61

Figure 62: 4MCU, Radiated, Mode 2, 30MHz-1GHz, 000 Deg, Horizontal 64

Figure 63: 4MCU, Radiated, Mode 2, 30MHz-1GHz, 000 Deg, Vertical 65

Figure 64: 4MCU, Radiated, Mode 2, 30MHz-1GHz, 180 Deg, Horizontal 65

Figure 65: 4MCU, Radiated, Mode 2, 30MHz-1GHz, 180 Deg, Vertical 66

Figure 66: 4MCU, Radiated, Mode 2, 1-10GHz, 000 Deg, Horizontal 66

Figure 67: 4MCU, Radiated, Mode 2, 1-10GHz, 000 Deg, Vertical 67

Figure 68: 4MCU, Radiated, Mode 2, 1-10GHz, 180 Deg, Horizontal 67

Figure 69: 4MCU, Radiated, Mode 2, 1-10GHz, 180 Deg, Vertical 68

Figure 54: 4MCU, Radiated, Standby Mode, 30MHz-1GHz, 000 Deg, Horizontal 69

Figure 55: 4MCU, Radiated, Standby Mode, 30MHz-1GHz, 000 Deg, Vertical 70

Figure 56: 4MCU, Radiated, Standby Mode, 30MHz-1GHz, 180 Deg, Horizontal 70

Figure 57: 4MCU, Radiated, Standby Mode, 30MHz-1GHz, 180 Deg, Vertical 71

Figure 58: 4MCU, Radiated, Standby Mode, 1-10GHz, 000 Deg, Horizontal 71

Figure 59: 4MCU, Radiated, Standby Mode, 1-10GHz, 000 Deg, Vertical 72

Figure 60: 4MCU, Radiated, Standby Mode, 1-10GHz, 180 Deg, Horizontal 72

Figure 61: 4MCU, Radiated, Standby Mode, 1-10GHz, 180 Deg, Vertical 73

Figure 70: 4MCU, Conducted Test Results 74

Figure 71: 4MCU, Conducted, High Line 75

Figure 72: 4MCU, Conducted, Return Line 75

List of Tables

Table 1: T²CAS model numbers/part numbers and key characteristics..... 2

Table 2: Mode S Interrogation Timing 10

Table 3: Mode S Interrogations, Omni-Directional Antenna..... 11

Table 4: Mode S Directional Antenna Interrogation Transmission Levels 11

Table 5: Top Directional / Bottom Omni-Directional Interrogation Sequence 12

Table 6: Top Directional / Bottom Directional Interrogation Sequence 13

Table 7: RF Power Output Test Equipment Required 33

Table 8: Peak power output and frequency measured at bottom antenna 0 degree port 34

Table 9: Modulation Characteristics Test Equipment Required 34

Table 10: Occupied Bandwidth Test Equipment Required 38

Table 11: Spurious Emissions at Antenna Terminals (0 – 2000 MHz) Test Equipment Required..... 42

Table 12: Spurious Emissions at Antenna Terminals (2000 – 11330 MHz) Test Equipment Required..... 48

Table 13: Spurious Emissions at Antenna Terminals L.O. Leakage (1030 MHz) Test Equipment Required
..... 55

Table 14: Allowable radiated emissions levels for units containing digital devices per 47CFR15.109 57

Table 15: Field Strength of Spurious Radiation Test Equipment Required 58

Table 16: Frequency Stability (Temperature Variation) Test Equipment Required 60

Table 17: Frequency Stability (Temperature Variation, +28 VDC Power Supply) Test Results Example
Table 61

Table 18: Frequency Stability (Primary Power Variation) Test Equipment Required 61

Table 19: Frequency Stability (Primary Power Variation) Test Results Example Table 62

1 INTRODUCTION

T²CAS (Traffic and Terrain Collision Avoidance System) is an integrated system that provides TCAS-II, Terrain Awareness Warning System (TAWS), Reactive Windshear and GPS functions in a single LRU. The model TT-95x T²CAS units (ACSS Part Number 9000000-xx001) are based on the predecessor TCAS-2000 unit. The model TT-95x units are either 4MCU or 6MCU sized units that meet the ARINC-735 form factor requirements and are intended for the Air Transport market (see Table 1).

The model TT-950 and TT-952 units will accept both 115Vac 400 Hz and 28Vdc power inputs, while the model TT-951 unit accepts only 28 Vdc DC power input. The TT-95x units will work in un-pressurized environments. For further information on the T²CAS family of products, please refer to ACSS document 8000072-001, T²CAS Product Specification.

This document provides the FCC compliance test plan and procedures for the model TT-951 T²CAS units.

2 APPLICABLE T²CAS UNIT PART NUMBERS

This document shall be applicable to the following T²CAS unit model numbers/part numbers:

Model	ACSS Part Number	TAWS I/O	Internal GPS	Unit Size
TT-951	9000000-55001	Digital & Analog	No	4MCU
AP-950	9000001-10001	-	-	ARINC 607 Type 2

Table 1: T²CAS model numbers/part numbers and key characteristics

2.1 References

Applicable industry and regulatory documents are listed here. Unless otherwise specified, all references are to the document revision levels listed here.

2.1.1 FAA Documents

Directive 8110.4B	Type Certification. April 24, 2000
AC No. 20-131A	Airworthiness and Operational Approval of Traffic Alert and Collision Avoidance Systems. March 29, 1993.
TSO-C117a	Airborne Windshear Warning and Escape Guidance Systems for Transport Airplanes.
TSO-C119b	Traffic Alert and Collision Avoidance System Airborne Equipment (TCAS-II). 14 October 1988.
TSO-C129a	Airborne Supplemental Navigation Equipment using Global Positioning System (GPS).
TSO-C151a	Terrain Awareness and Warning System.

2.1.2 RTCA Documents

RTCA DO-160D	Environmental Conditions and Test Procedures for Airborne Equipment. July 29, 1997.
RTCA DO-160D Change 1	Change No. 1 to Environmental Conditions and Test Procedures for Airborne Equipment. December 14, 2000
RTCA DO-160D Change 2	Change No. 2 to Environmental Conditions and Test Procedures for Airborne Equipment. June 12, 2001
RTCA DO-185A	Minimum Operational Performance Standards for Traffic Alert and Collision Avoidance System (TCAS) Airborne Equipment. December 16, 1997.

2.1.3 ARINC Documents

ARINC-735A Traffic Alert and Collision Avoidance System (TCAS).

2.1.4 FCC Documents

CFR Title 47 Code of Federal Regulations - Telecommunications
 Chapter 1 Federal Communications Commission
 Part 2 Frequency Allocations and Radio Treaty Matters; General Rules and Regulations
 Subpart J Equipment Authorization Procedures
 Revised as of October 1, 2001

CFR Title 47 Code of Federal Regulations - Telecommunications
 Chapter 1 Federal Communications Commission
 Part 15 Radio Frequency Devices
 Subpart A General
 Revised as of October 1, 2001

CFR Title 47 Code of Federal Regulations - Telecommunications
 Chapter 1 Federal Communications Commission
 Part 87 Aviation Services
 Subpart D Technical Requirements
 Revised as of October 1, 2001

2.1.5 ACSS Documents

T ² CAS Model TT-951 End Item Assembly Drawing	9000000-20001
T ² CAS Model TT-951 Circuit Card Assembly - A1 Interconnect	9000005-001
T ² CAS Model TT-951 Circuit Card Assembly - A2 TCAS Processor	7517925-903
T ² CAS Model TT-951 Circuit Card Assembly - A3 TCAS Transmitter	7517935-902
T ² CAS Model TT-951 Circuit Card Assembly - A4 Power Supply	9000015-001
T ² CAS Model TT-951 Circuit Card Assembly - A5 TCAS Receiver I/O	7517945-903
T ² CAS Model TT-951 Circuit Card Assembly - A7 TAWS Processor	9000020-001
T ² CAS Automated Test Procedure	8000253-001
TCAS2000 Integrated Test Specification	IT7517900
T ² CAS Product Specification	8000072-001
T ² CAS System Description and Installation Manual	8000451-001
Labels for T ² CAS/APM	9000299-001

2.2 Acronyms and Abbreviations

AC	Advisory Circular
CFR	Code of Federal Regulations
CMC	Canadian Marconi Corporation
CS	Conducted Susceptibility
EB	Engineering Bulletin
EMI	Electromagnetic Interference

ESS	Environmental Stress Screen
ESD	Electrostatic Discharge
EUT	Equipment Under Test
FAA	Federal Aviation Administration
FCC	Federal Communications Commission
GPS	Global Positioning System
HIRF	High Intensity Radiated Fields
LISN	Line Impedance Stabilization Network
MOPS	Minimum Operational Performance Standards
NTS	National Technical Systems
RF	Radio Frequency
RFI	Radio Frequency Interference
RS	Radiated Susceptibility
RTCA	Radio Technical Commission for Aeronautics
TAWS	Terrain Avoidance Warning System
TCAS	Traffic Alert and Collision Avoidance System
T ² CAS	Traffic and Terrain Collision Avoidance System
TSO	Technical Standard Order
UUT	Unit Under Test

3 GENERAL INFORMATION

3.1 TYPE DESIGNATION

The equipment has been designated by ACSS as models TT-95x T²CAS Computer Units, P/Ns 9000000-20001 (TT-952), 9000000-55001 (TT-951), 9000000-1001 (TT-950).

3.2 SERVICE AND RULE FOR INTENDED OPERATION

Air Traffic Control
Part 87, Subpart A

3.3 DESCRIPTION OF EQUIPMENT

3.3.1 TAWS/Windshear Functionality

The TAWS/Windshear function is implemented as an independent processor and I/O circuitry from the TCAS function. The TAWS/Windshear circuitry is contained on a unique circuit card assembly (CCA), which is added to the existing TCAS-2000 unit design in a spare card slot

The TAWS function uses vertical speed, ground speed, track angle, flight path angle, latitude, longitude, flap status, steep approach status, static air temperature, roll angle, pressure altitude system inputs. A database, which includes terrain data, airport data, aircraft performance data and climb rate models, is used for the determination of the alerts and display of terrain information.

The TAWS/Windshear CCA will also provide a reactive windshear alert which meets the requirements of TSO-C117a. The windshear alert is active during take-off and final approach phases and produces aural and visual annunciations. The windshear alert measures vertical and horizontal components of air mass accelerations and determines if a windshear caution or warning should be generated. Windshear alert is not yet implemented; however, all current circuitry and processor will be utilized.

3.3.2 TCAS Functionality

3.3.2.1 Type of Emission

18MOP1D

3.3.2.2 Frequency Range

1030 + 0.01 MHz

3.3.2.3 Power Rating

0.4 to 500 Watts Peak Effective Radiated Power (Pulsed)

3.3.2.4 Final Power Amplifier

Solid State Balanced Amplifier (Class C) using two Motorola MRF10501 silicon bipolar transistors.

3.3.2.5 Active Device Functions

<u>Function</u>	<u>Device Type</u>	<u>Manufacturer</u>
Oscillator	Temperature Compensated Crystal Oscillator (TCXO)	6206 Oscillatek
	Microwave Low Noise Transistor--Amplifier	AT-41511 HP
Transmitter	Monolithic Amplifier .1 Watt, Microwave Pulse Power	VNA – 25 Mini-Circuit
<u>Function</u>	<u>Device Type</u>	<u>Manufacturer</u>
Transmitter	Transistor--Amplifier, 1 watt Microwave Pulse Power	MRF1000MB Motorola
	Transistor--Amplifier, 5 watt Microwave Pulse Power	MRF10005 Motorola
	Transistor--Amplifier, 30 watt Microwave Pulse Power	MRF10031 Motorola
	Transistor--Amplifier, 150 watt Microwave Pulse Power	MRF10120 Motorola
	Transistor--Amplifier, 500 watt Microwave Pulse Power	MRF10502 (2 ea) Motorola
Pulse Modulator	N Channel FET Modulator	IRFR220 Motorola
	N Channel FET Envelope Modulator	IRFR9220 International Rectifier
DPSK Modulator	NPN Transistor (1) Modulator	BSR14 Generic
	NPN Transistor (2)	BSR16 Generic

Modulator

3.3.3 Circuit Diagram

A block diagram and schematics will be provided with the FCC Form 731 when the application for certification is filed with the FCC.

3.3.4 Instruction Book

An ACSS document, System Description and Installation Manual, 8000451-001, provides instructions for the proper installation of the T2CAS computer on a given aircraft.

3.3.5 Tune-up Procedure

No field tuning is required. Alignment is performed in the factory.

3.3.6 Oscillator Circuit

The 1030 MHz source consists of the following: 1.) a phase locked oscillator (PLO) is locked to a Temperature Compensated Crystal Oscillator (TCXO). The TCXO provides the required frequency stability for the 1030 MHz source. 2.) the output of the PLO is fed to a prescaler divider, which in turn provides the input to a multiplier circuit. 3.) the output of the multiplier is band pass filtered, and then amplified and distributed to both the receiver and transmitter circuits.

3.3.7 Frequency Stabilization

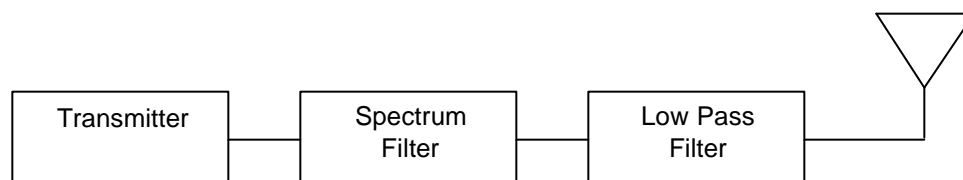
Temperature Compensated Crystal Oscillator (TCXO).

3.3.8 Modulation Limiting

Not Applicable

3.3.9 Radiated Interference Suppression

At the output of the transmitter is a two-pole high power cavity filter designed to attenuate spurious created by the DPSK modulation. This filter also offers good rejection of the even harmonics of the carrier. Following the high power cavity filter is a five pole reflective microstrip low pass filter designed for maximum rejection of the 2nd through 9th harmonics of the carrier



The spectral output of the 1030 MHz transmitter will be limited to the following schedule:

ACSS Proprietary	Use or disclosure of the information on this sheet is subject to the proprietary notice on the title page.	Page 7
---------------------	---	--------

<u>Frequency difference (MHz from carrier)</u>	<u>Relative power (dB below maximum)</u>
≥ 4, < 6	6
≥ 6, < 8	11
≥ 8, < 10	15
≥ 10, < 20	19
≥ 20, < 30	31
≥ 30, < 40	38
≥ 40, < 50	43
≥ 50, < 60	47
≥ 60, < 90	50
≥ 90	60

4 MODULATION DETAILS

4.1 ATCRBS Interrogations.

Interrogations are sent out on an intentionally jittered $1+0.2$ second interval in increasing power levels according to the schedules shown in Table 4, Table 5, and Table 6. By transmitting the weakest signals first only the closest aircraft will reply. The interrogations progress in a roughly circular pattern weighted toward the front of the aircraft since that is the area from which the greatest closing speeds originate. In areas of high density the sequence is halted when the computer has reached a limit defined by a complex set of three inequalities. In this manner, interference to other TCAS equipped aircraft in the area is minimized since the strongest interrogations are the first to be dropped. The priority of elimination of steps for interference limiting is also shown in Table 4, Table 5, and Table 6. This priority is inversely related to the order of the step sequence.

Pulse Widths: $0.8 + 0.05$ usec
 Rise Times (10% to 90%): ≥ 0.05 usec., < 0.1 usec
 Fall Times (90% to 10%): ≥ 0.05 usec., < 0.2 usec

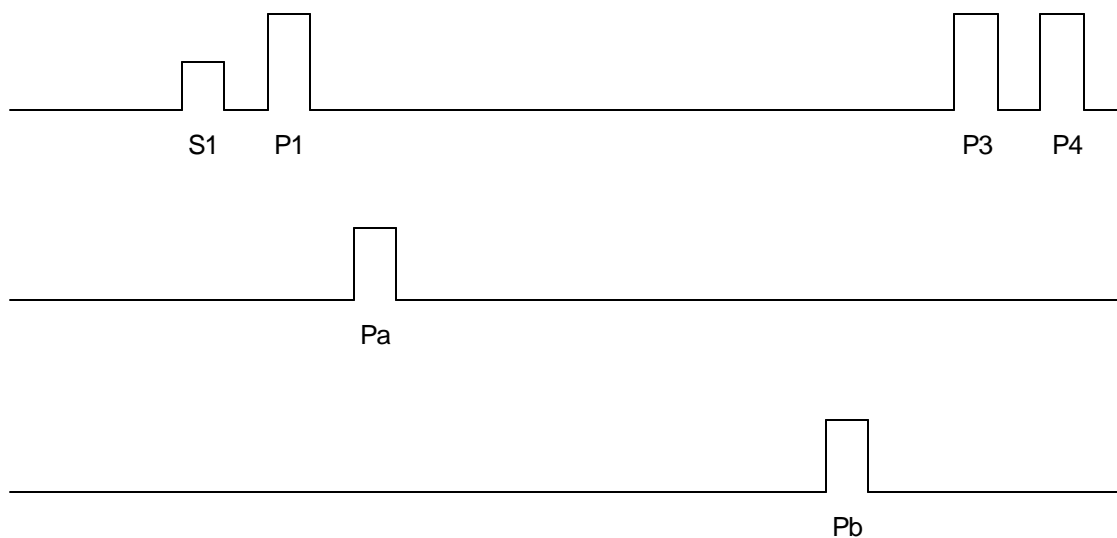


Figure 1: ATCRBS Interrogations

Pulses P1, P3, and P4 will appear in all interrogation steps of the whisper / shout sequence and will be at the same power level. Pulse S1 will appear in all steps except the initial step on each antenna direction and at a level two or three dB below the level of P1, etc. according to the schedules shown in Figures 1 through 3. The steps occur at intervals of two milliseconds until the entire program is complete. The program length depends upon the individual aircraft installation. Options are available from using either an omni-directional bottom antenna or a directional bottom antenna. The top antenna is always directional. Pulses Pa and Pb are transmitted on the antenna. They are used for suppression of sensitivity of the receiving aircraft to the indicated pulses:

S1 = -2 microseconds
 P1 = 0 microseconds
 PA = 2 microseconds
 PB = 19 microseconds
 P3 = 21 microseconds
 P4 = 23 microseconds

4.2 Mode S Interrogations

Details of the Mode S interrogations are shown in Figure 2 below. The preamble and the synchronizing phase reversal (SPR) will appear the same in all interrogations. The data block will be either 56 or 112 chips of 0.25 microseconds, depending upon the type of reply desired. The data chips will be reversed phase from their previous chips if their data bit are 1, they will remain the same phase as the previous chips is their data bits are 0. The allowable transition time of the phase reversals is a maximum of 80 nanoseconds. The Mode S interrogations are transmitted after the whisper/shout sequence of ATCRBS interrogations. When no Mode S equipped aircraft are replying, the TCAS CU sends out Mode S broadcast interrogations based upon a 10 second pattern with 2 or 3 seconds between transmissions on the four lobes of the antenna. The time remaining after the Mode S transmissions are completed is used as a listening period for other unacquired aircraft.

- Preamble Pulse Widths: 0.8 + 0.05 usec
- Rise Times (10% to 90%): < 0.1 usec
- Fall Times (90% to 10%): < 0.2 usec

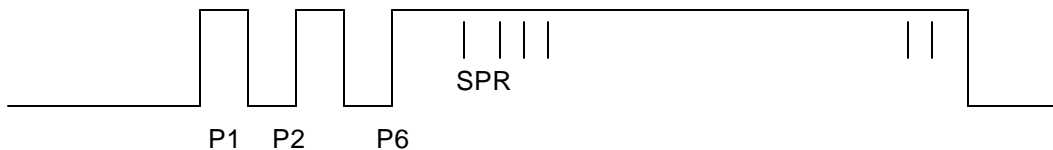


Figure 2: Mode S Interrogations

Timing of the Mode S interrogations is as follows, referenced to the leading edge of the P1 pulse:

P1	0.0 microseconds
P2	2.0 microseconds
P6	3.5 microseconds
SPR	4.75 microseconds
Bit 1	5.25 microseconds
End P6	19.75 microseconds (56 bits) 33.75 microseconds (112 bits)

Table 2: Mode S Interrogation Timing

Nominal Power Levels (dB relative to full power)		
Level	P1,P3, P4 Pulses	S1 Pulse
00	-13	-16
01	-15	-18
02	-17	-20
03	-19	-22
04	-21	-24
05	-23	-26
06	-25	none

Table 3: Mode S Interrogations, Omni-Directional Antenna

Directional Antenna			
Nominal Power Levels (dB relative to full power)			
Level	P1,P3, P4	S1 Pulse	Pa, Pb Pulse
D0	0	-3	-2
D1	-1	-3	-3
D2	-2	-5	-4
D3	-3	-5	-5
D4	-4	-7	-6
D5	-5	-7	-7
D6	-6	-9	-8
D7	-7	-9	-9
D8	-8	-11	-10
D9	-9	-11	-11
D10	-10	-13	-12
D11	-11	-13	-13
D12	-12	-15	-14
D13	-13	-15	-15
D14	-14	-17	-16
D15	-15	-17	-17
D16	-16	-19	-18
D17	-17	-19	-19
D18	-18	-21	-20
D19	-19	-21	-21
D20	-20	-23	-22
D21	-21	-23	-23
D22	-22	-25	-24
D23	-23	-25	-25
D24	-24	-27	-26
D25	-25	-27	-27
D26	-26	--	-16 (P4 only)

Table 4: Mode S Directional Antenna Interrogation Transmission Levels

Bottom Omni-Directional Antenna			
Interference Limiting Priority / Interrogation Level			
98 / 06			
97 / 05			
96 / 04			
95 / 03			
94 / 02			
93 / 01			
92 / 00			
Top Directional Antenna			
Interference Limiting Priority / Interrogation Level			
0'	180'	90'	270'
91 / D26	-	-	-
90 / D25	-	-	-
89 / D24	-	-	-
88 / D23	-	87 / D26	86 / D26
85 / D22	-	84 / D25	83 / D25
82 / D21	-	81 / D24	80 / D24
79 / D20	-	78 / D23	77 / D23
76 / D19	-	75 / D23	74 / D22
73 / D18	72 / D26	71 / D21	70 / D21
69 / D17	68 / D25	67 / D20	66 / D20
65 / D16	64 / D24	63 / D20	62 / D19
61 / D15	60 / D23	59 / D18	58 / D18
57 / D14	56 / D22	55 / D17	54 / D17
49 / D12	48 / D20	47 / D15	46 / D15
45 / D11	44 / D19	43 / D14	42 / D14
41 / D10	40 / D18	39 / D13	38 / D13
37 / D9	36 / D17	35 / D12	34 / D12
33 / D8	32 / D16	31 / D11	30 / D11
29 / D7	28 / D15	27 / D10	26 / D10
25 / D6	24 / D14	23 / D9	22 / D9
21 / D5	20 / D13	19 / D8	18 / D8
17 / D4	16 / D12	15 / D7	14 / D7
13 / D3	12 / D11	11 / D6	10 / D6
9 / D2	8 / D10	7 / D5	6 / D5
5 / D1	4 / D10	3 / D4	2 / D4
1 / D0	-	-	-

(Interrogation sequence is right to left, top to bottom)

Table 5: Top Directional / Bottom Omni-Directional Interrogation Sequence

Interference Limiting Priority / Interrogation Level

Top Directional Antenna				Bottom Directional Antenna			
0'	180'	90'	270'	0'	180'	90'	270'
113 / D26	-	-	-	112 / D26	-	-	-
111 / D25	-	-	-	-	110 / D25	-	-
109 / D24	-	-	-	108 / D24	-	-	-
107 / D23	-	-	-	106 / D23	-	-	-
-	-	105 / D26	104 / D26	-	-	103 / D26	102 / D26
101 / D22	-	-	-	100 / D22	-	-	-
-	-	99 / D25	98 / D25	-	-	97 / D25	96 / D25
95 / D21	-	-	-	94 / D21	93 / D26	-	-
-	-	92 / D24	91 / D24	-	-	90 / D24	89 / D24
88 / D20	-	-	-	87 / D20	86 / D25	-	-
-	-	85 / D23	84 / D23	-	-	83 / D23	82 / D23
81 / D19	-	-	-	80 / D19	79 / D24	-	-
-	-	78 / D22	77 / D22	-	-	76 / D22	75 / D22
74 / D18	-	-	-	73 / D18	-	-	-
-	72 / D26	71 / D21	70 / D21	Interrogations for each sector that has a TA or RA present			
69 / D17	68 / D25	67 / D20	66 / D20				
65 / D16	64 / D24	63 / D19	62 / D19				
61 / D15	60 / D23	59 / D18	58 / D18				
57 / D14	56 / D22	55 / D17	54 / D17				
53 / D13	52 / D21	51 / D16	50 / D16				
49 / D12	48 / D20	47 / D15	46 / D15				
41 / D10	40 / D18	39 / D13	38 / D13				
37 / D9	36 / D17	35 / D12	34 / D12				
33 / D8	32 / D16	31 / D11	30 / D11				
29 / D7	28 / D15	27 / D10	26 / D10				
25 / D6	24 / D14	23 / D9	22 / D9				
21 / D5	20 / D13	19 / D8	18 / D8				
17 / D4	16 / D12	15 / D7	14 / D7				
13 / D3	12 / D11	11 / D6	10 / D6				
9 / D2	8 / D5	7 / D5	6 / D5				
5 / D1	4 / D9	3 / D4	2 / D4				
1 / D0	-	-	-				
				1 / D17	1 / D23	1 / D21	1 / D21
				1 / D16	1 / D22	1 / D20	1 / D20
				1 / D15	1 / D21	1 / D19	1 / D19
				1 / D14	1 / D20	1 / D18	1 / D18
				1 / D13	1 / D19	1 / D17	1 / D17
					1 / D18	1 / D16	1 / D16
					1 / D17	1 / D15	1 / D15
					1 / D16	1 / D14	1 / D14
					1 / D15	1 / D13	1 / D13
					1 / D14		
					1 / D13		

(Interrogation sequence is right to left, top to bottom)

Table 6: Top Directional / Bottom Directional Interrogation Sequence

5 DRAWINGS AND PHOTOGRAPHS

5.1 Drawings

Refer to Paragraph 2.1.5 for a list of ACSS drawings that will be furnished with the application.

5.2 Photographs

Photographs of the T²CAS unit illustrating the assembly drawings are listed below. All original photographs are available for inspection.

Figure Number

View

Figure 3	Unit Front Name Plate
Figure 4	Unit Front With Name Plate Showing
Figure 5	Unit Rear With ARINC Connector
Error! Reference source not found.	View of Unit Side, Cover Removed, and Showing A5 Receiver - I/O Assembly with Shield
Figure 6	View of Unit Side With A7 TAWS Processor Showing
Figure 7	View of Unit Side, A7 TAWS Removed, Showing A2 Processor
Figure 9	View of Unit Side With A5 Receiver Hinged Outward, Showing A4 Power Supply/Modulator Assembly
Figure 10	View of Unit Side with A2 Processor Removed Showing A3 Transmitter Assembly With Cover
Figure 11	View of Unit Side, A5 Receiver and Front Panel Removed, Showing A4 Power Supply/Modulator Assembly
Figure 12	View of Unit Side, A4 Power Supply/Modulator Assembly Removed, Showing A1 Interconnect Assembly
Figure 13	View of A3 Transmitter Assembly With Shield Removed
Figure 14	View of A5 Receiver – I/O Assembly with Shield Removed. Side A
Figure 15	View of A5 Receiver – I/O Assembly with Cover Removed. Side B

ACSS Proprietary	Use or disclosure of the information on this sheet is subject to the proprietary notice on the title page.	Page 14
---------------------	--	---------

Figure 16

View of A7 TAWS Processor With Bracket Attached

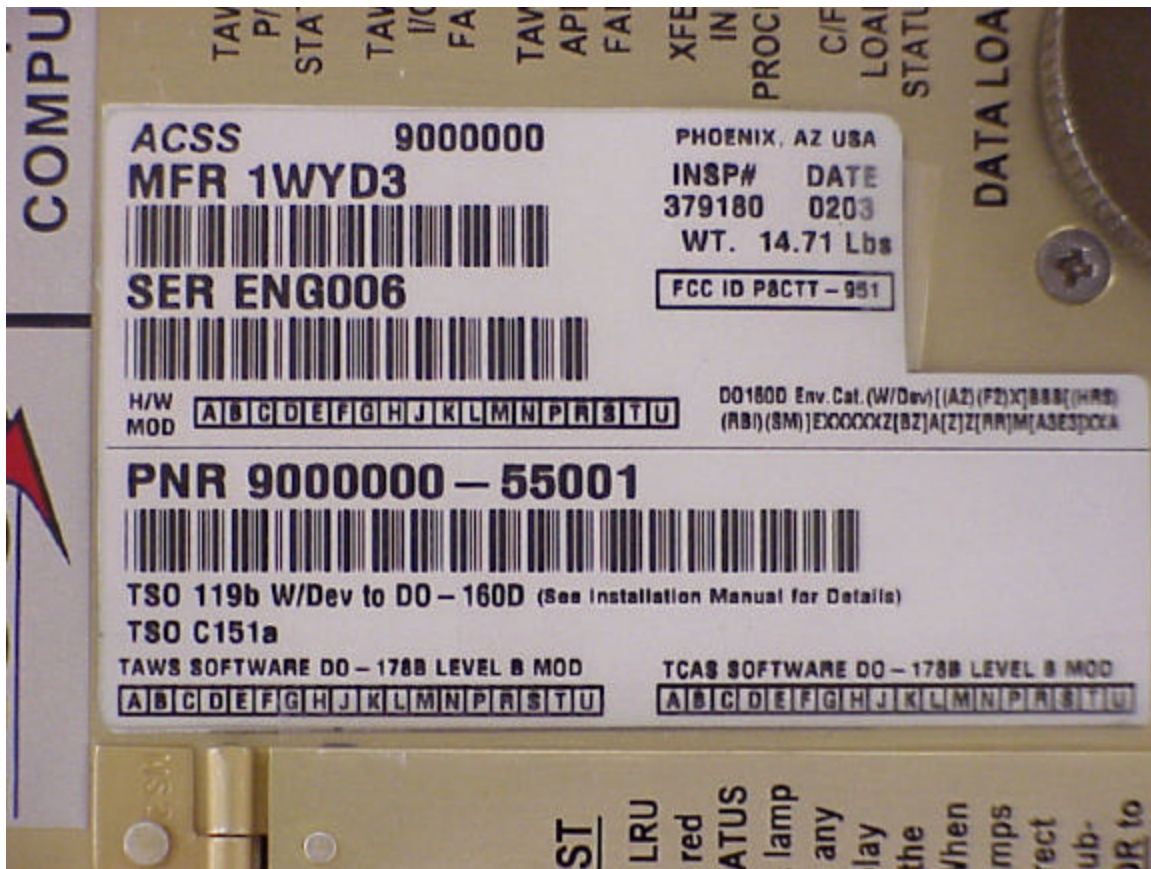


Figure 3: Unit Front Name Plate



Figure 4: Unit Front With Name Plate Showing

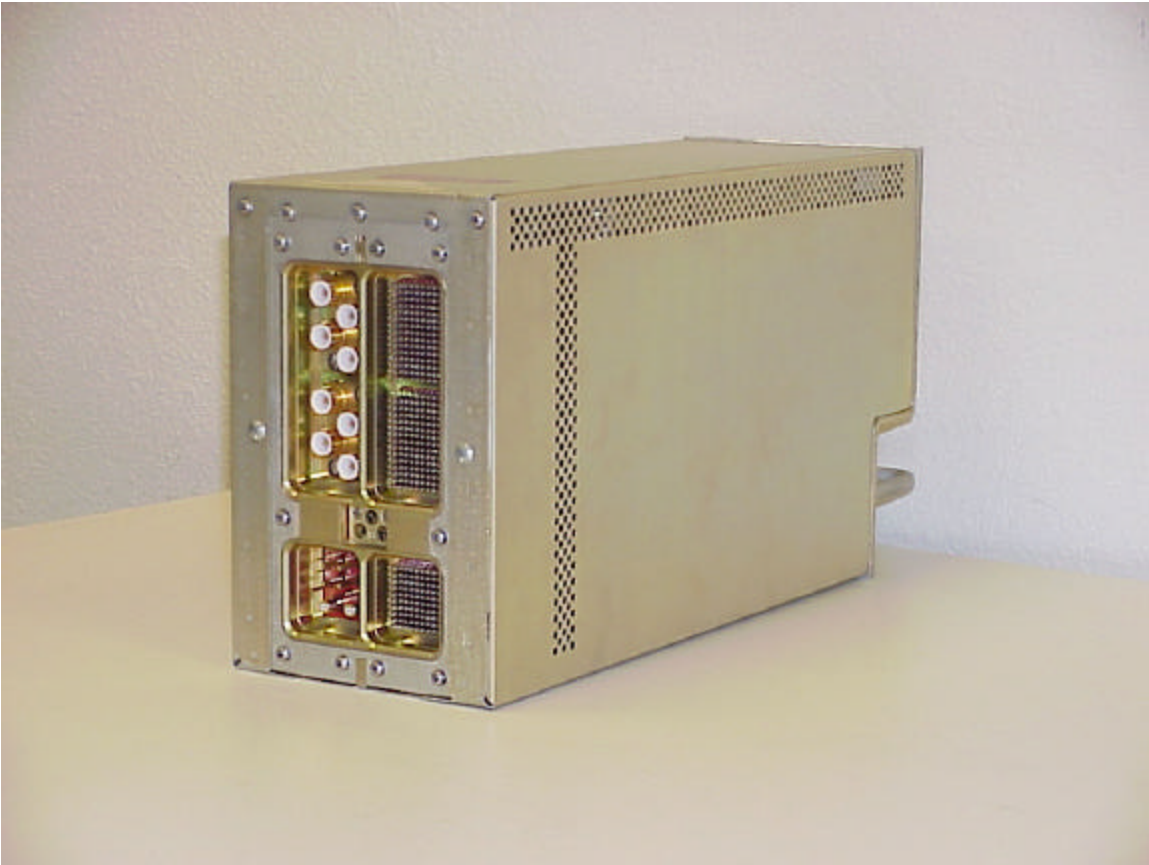


Figure 5: Unit Rear With ARINC Connector

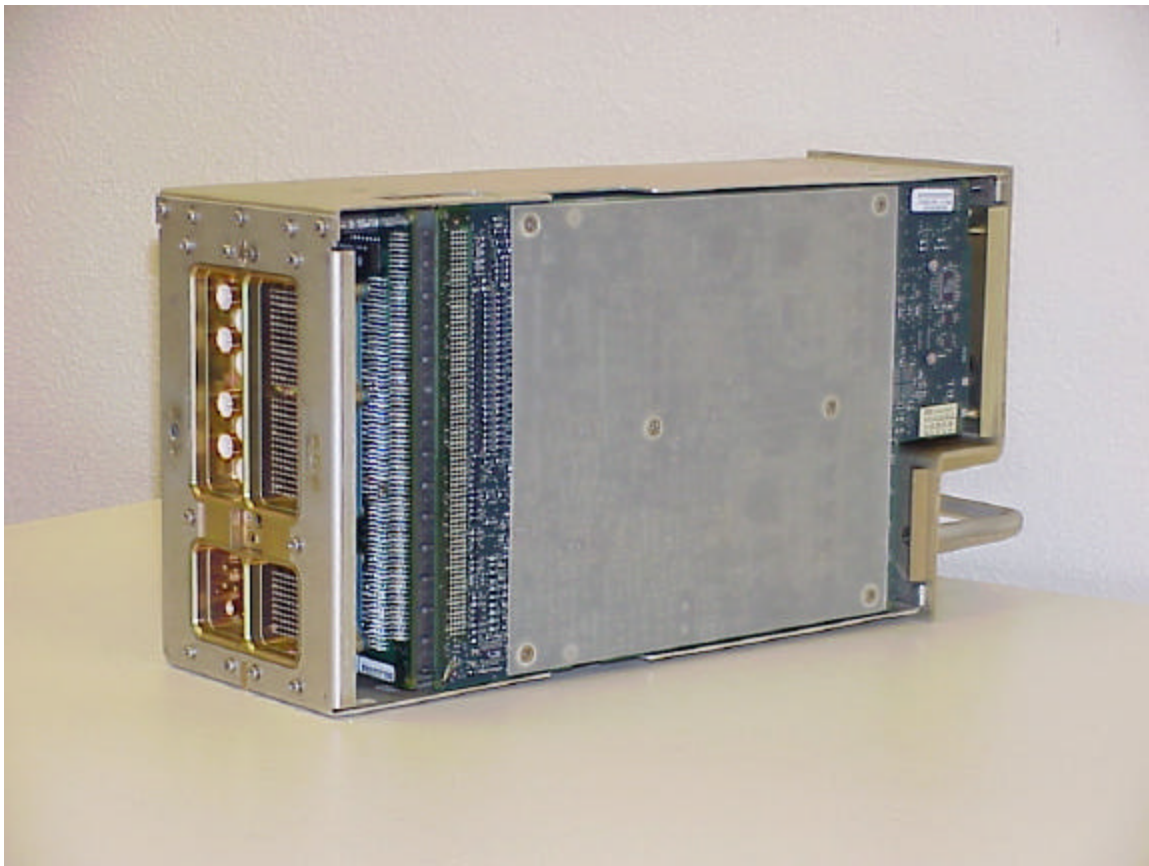


Figure 6: View of Unit Side With A7 TAWS Processor Showing

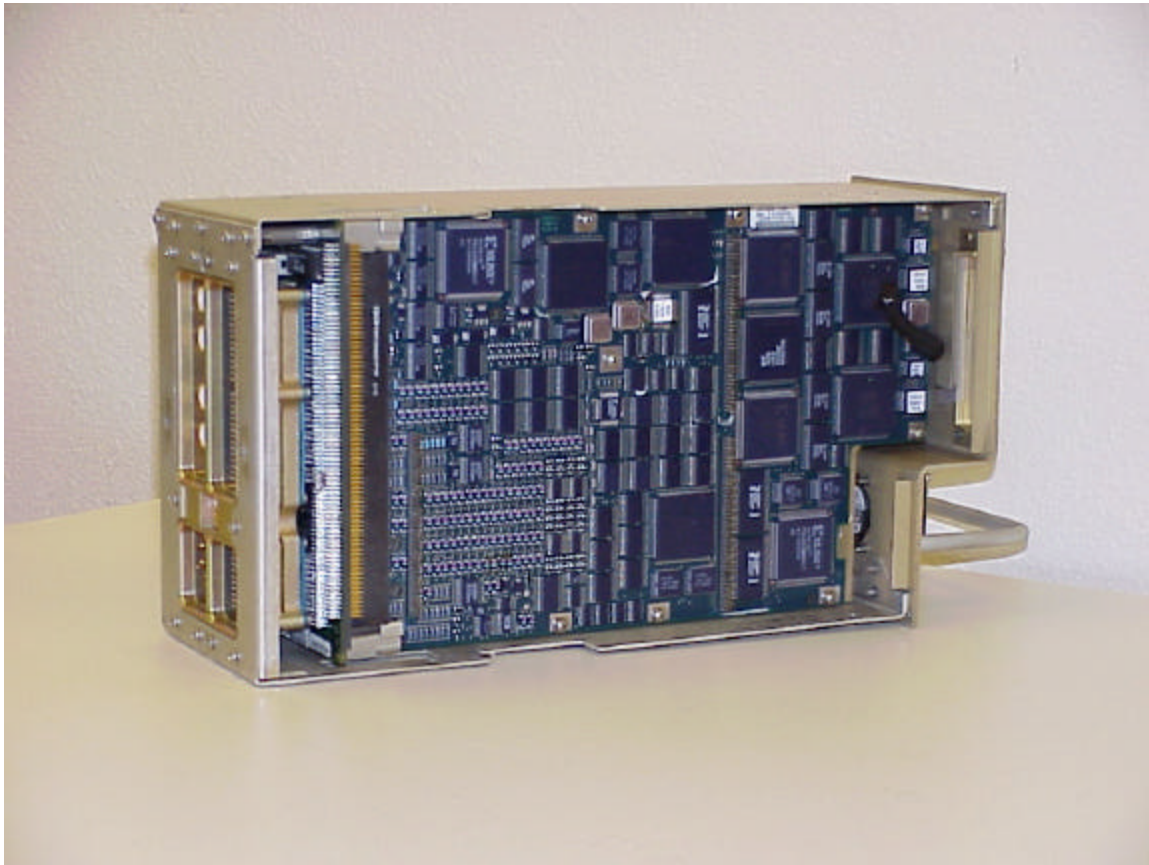


Figure 7: View of Unit Side, A7 TAWS Removed, A2 Processor Assembly Showing

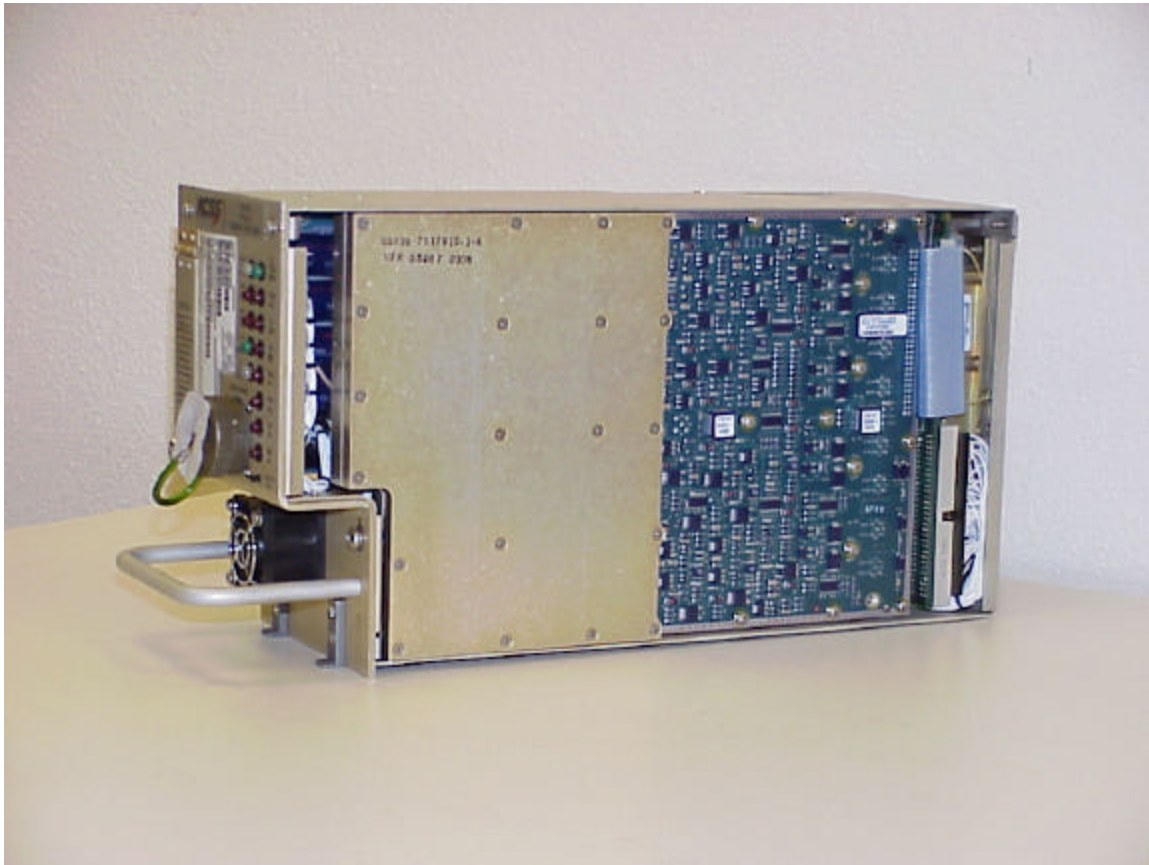


Figure 8: View of Unit Side, Showing A5 Receiver - I/O Assembly with Shield

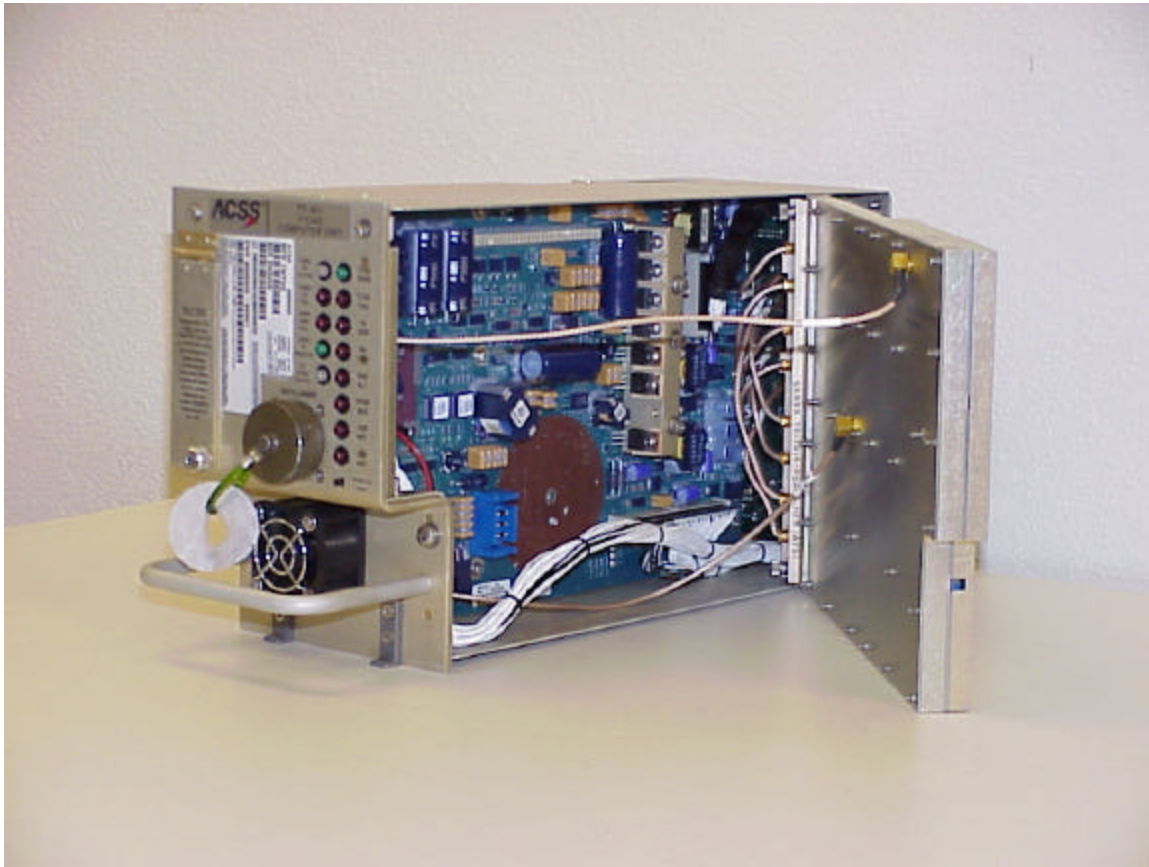


Figure 9: View of Unit Side With A5 Receiver Hinged Outward, Showing A4 Power Supply/Modulator Assembly

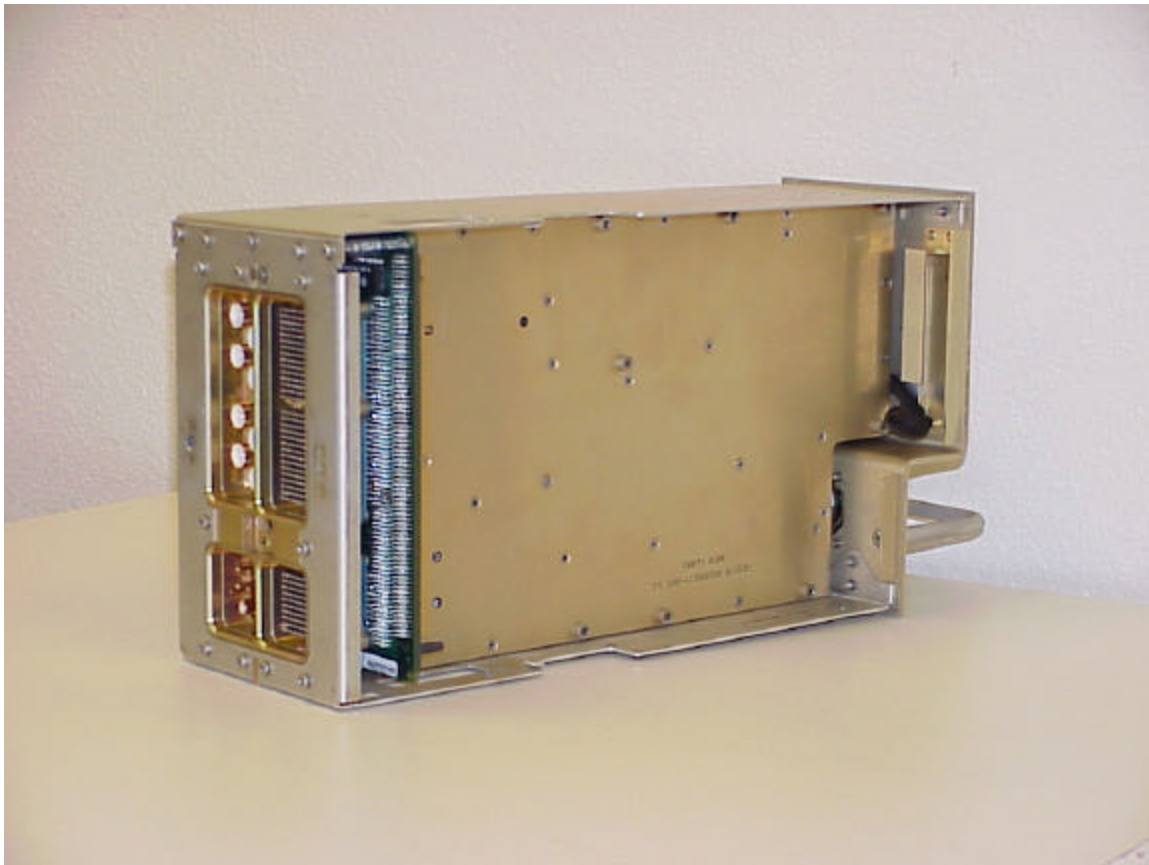


Figure 10: View of Unit Side with A2 Processor Removed Showing A3 Transmitter Assembly With Cover

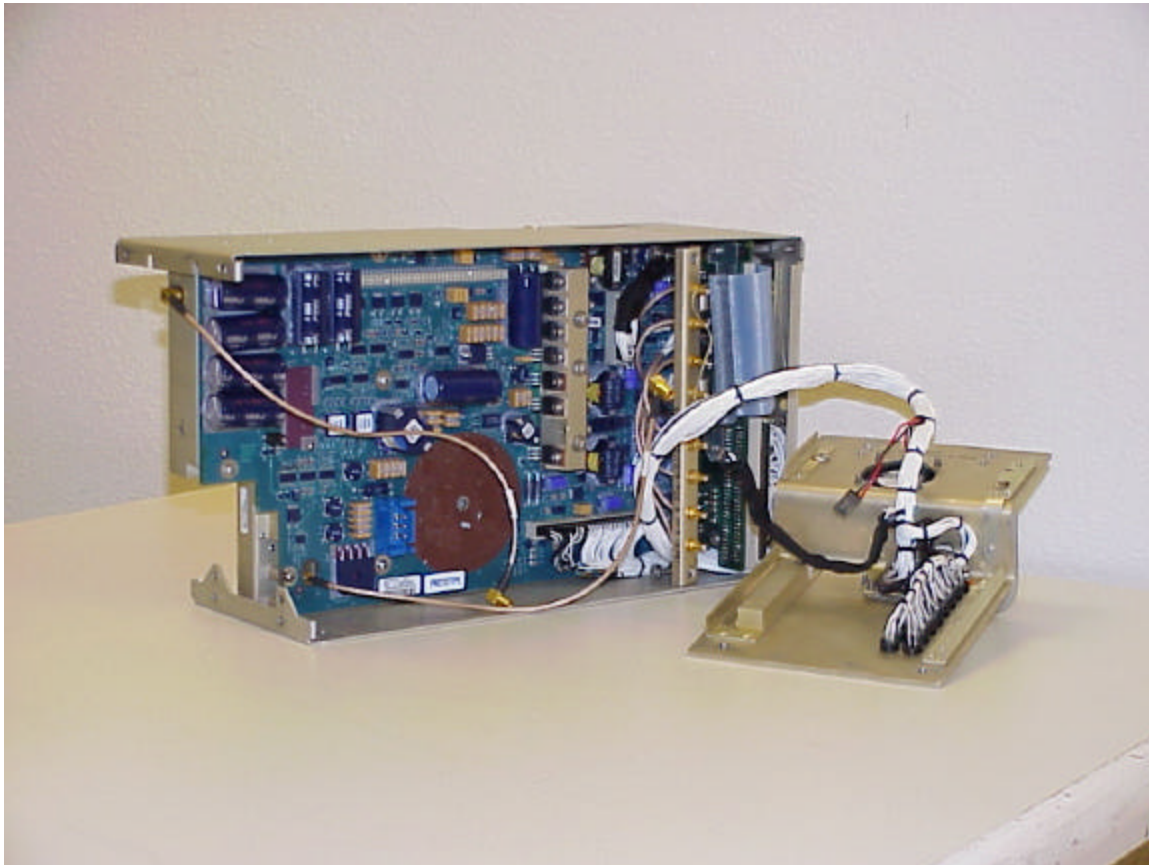


Figure 11: View of Unit Side, A5 Receiver and Front Panel Removed, Showing A4 Power Supply/Modulator Assembly

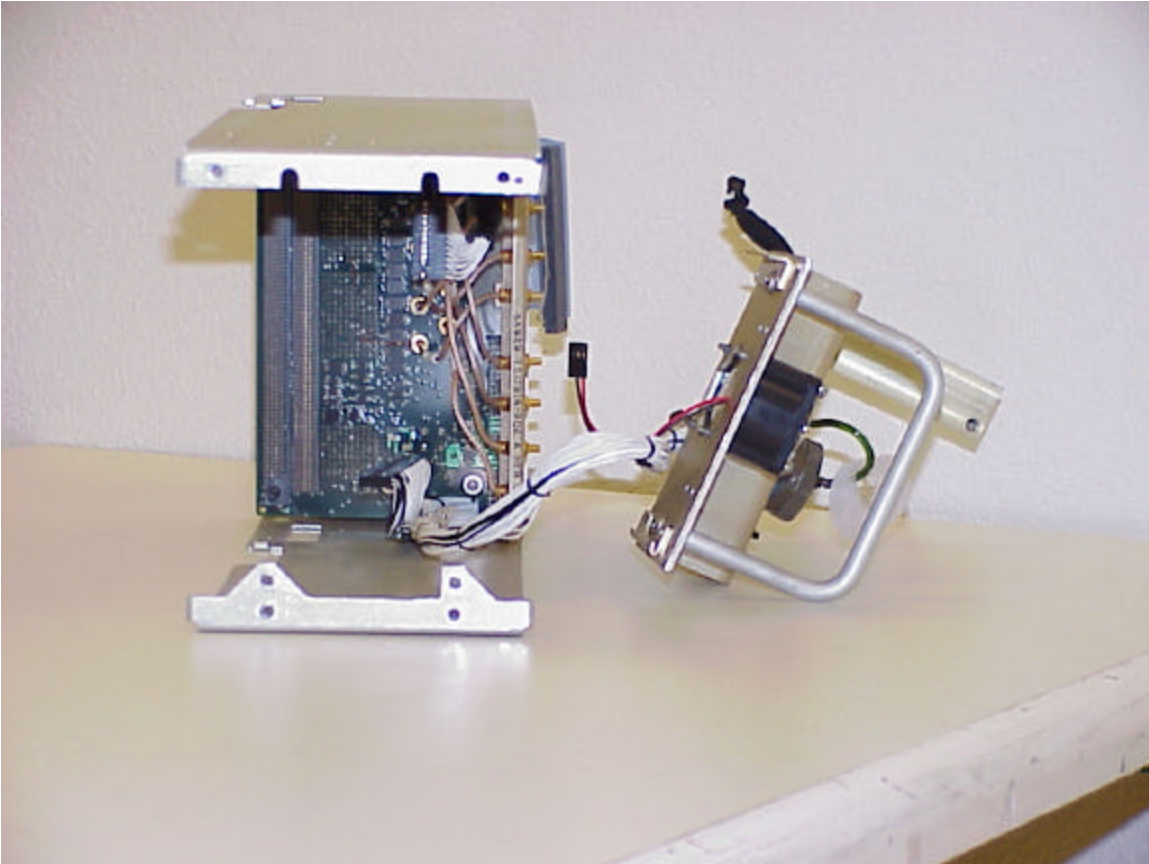


Figure 12: View of Unit Side, A4 Power Supply/Modulator Assembly Removed, Showing A1 Interconnect Assembly

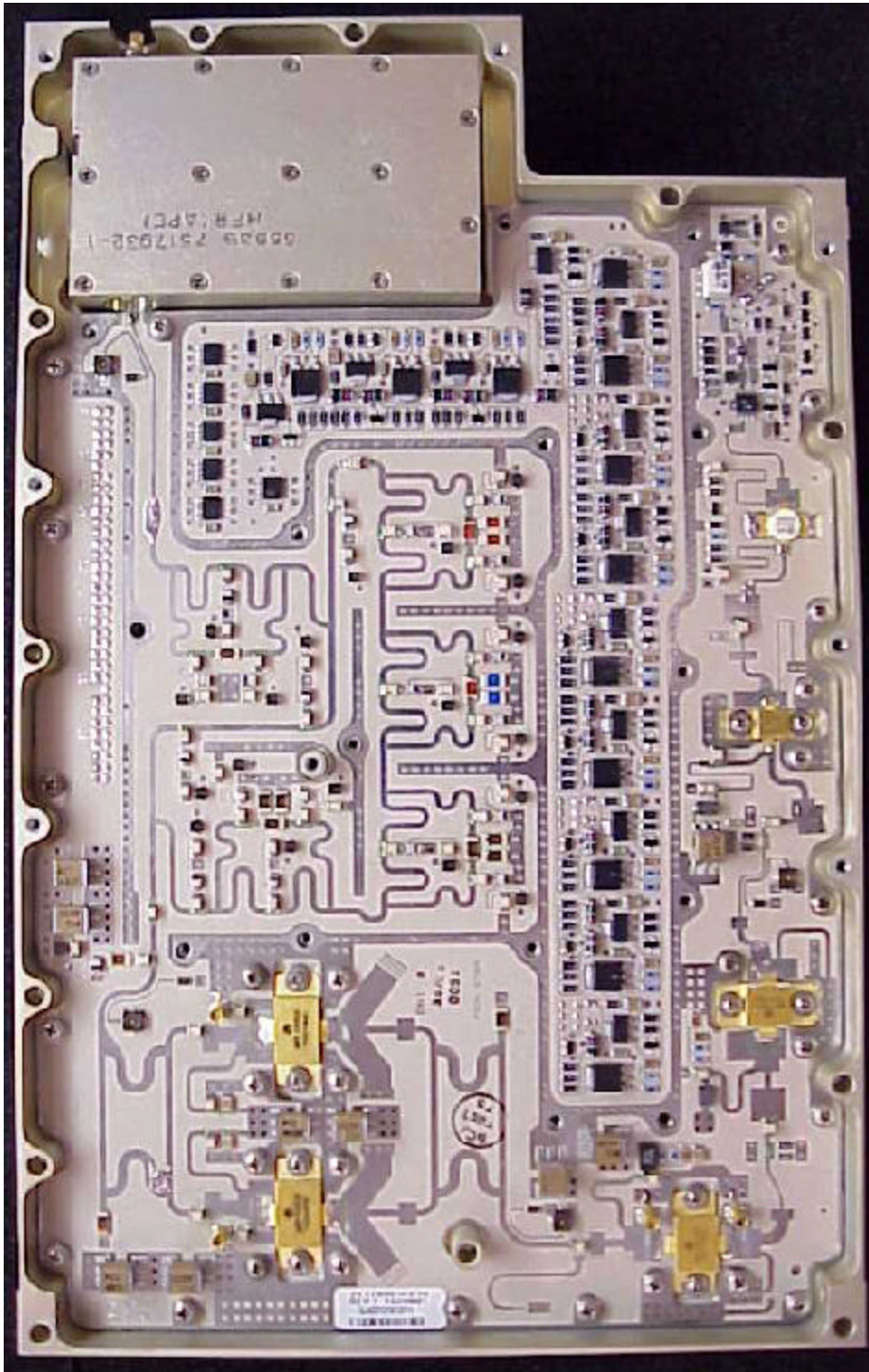


Figure 13: View of A3 Transmitter Assembly With Shield Removed

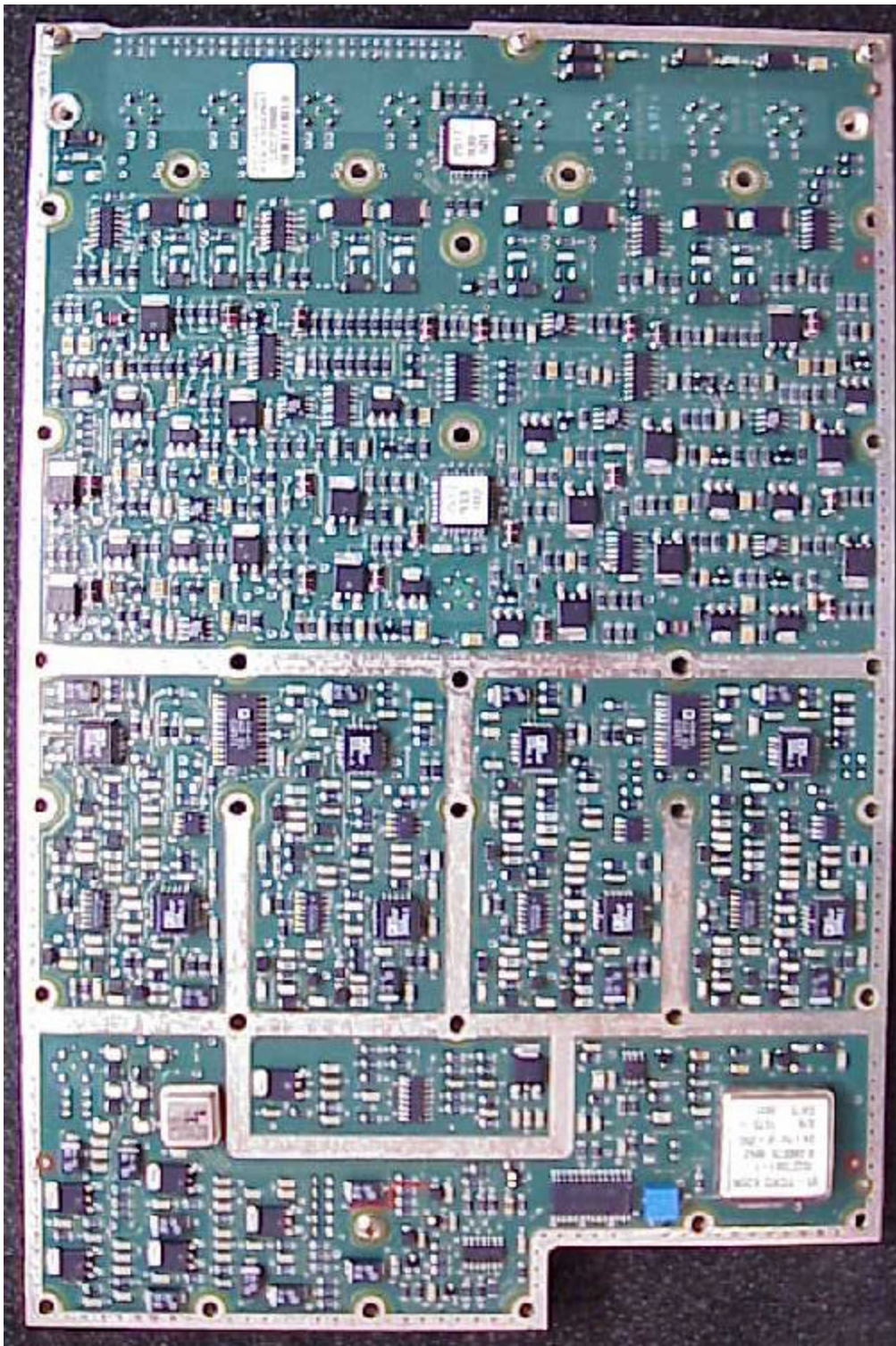


Figure 14: View of A5 Receiver – I/O Assembly with Shield Removed. Side A

ACSS Proprietary	Use or disclosure of the information on this sheet is subject to the proprietary notice on the title page.	Page 27
---------------------	---	---------

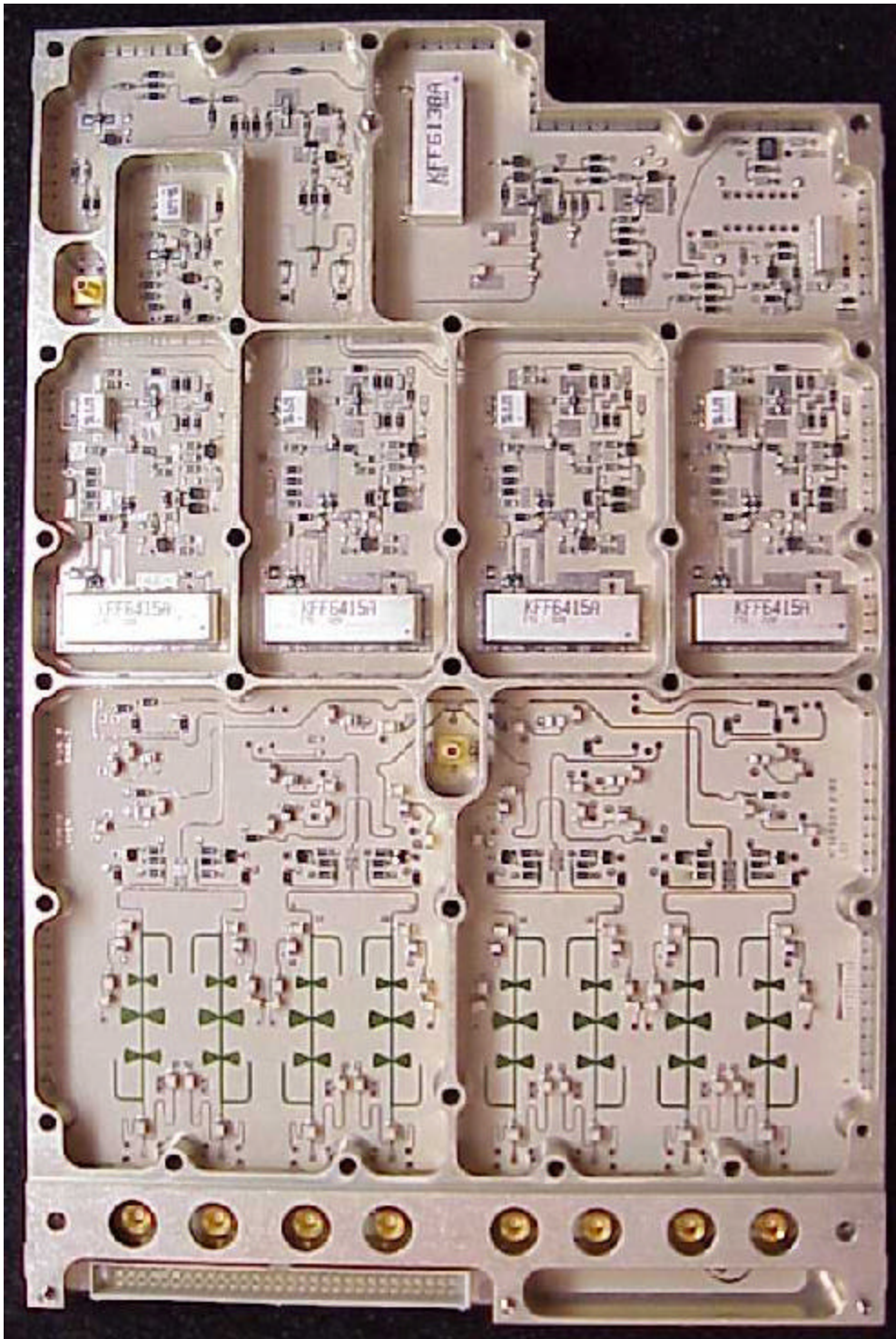


Figure 15: View of A5 Receiver – I/O Assembly with Cover Removed. Side B