

PROPRIETARY NOTICE  
THIS DOCUMENT AND THE INFORMATION DISCLOSED HEREIN ARE PROPRIETARY DATA OF HONEYWELL INC. NEITHER THIS DOCUMENT NOR THE INFORMATION CONTAINED HEREIN SHALL BE REPRODUCED, USED, OR DISCLOSED TO OTHERS WITHOUT THE WRITTEN AUTHORIZATION OF HONEYWELL INC.

NOTICE  
FREEDOM OF INFORMATION ACT (5 USC 552) AND DISCLOSURE OF CONFIDENTIAL INFORMATION GENERALLY (18 USC 1905)  
THIS DOCUMENT IS BEING FURNISHED IN CONFIDENCE BY HONEYWELL INC. THE INFORMATION DISCLOSED HEREIN FALLS WITHIN EXEMPTION (b) (4) OF 5 USC 552 AND THE PROHIBITIONS OF 18 USC 1905

NOTES:

1. SOLDER PER ITEM 702.
2. WIRE PER ITEM 701, TERMINATION TABLE AND BUS WIRE DATA.
3. TEST PER ITEM 704.
4. TRIM LEAD LENGTHS OF ITEMS 15, 16, 17 (Q1-Q7) TO .130 ±.030 FROM THEIR MOUNTING FLANGE.
5. APPLY ITEM 713 TO THREADS OF ALL NON-LOCKING HARDWARE, EXCEPT 10 EACH ITEM 39, SPECTRUM FILTER COVER SCREWS.
6. APPLY ABSORBER, ITEM 12, TO HOUSING, ITEM 1, AS SHOWN USING ITEM 714.
7. TYPE APPLICABLE SERIAL NUMBER, DASH NUMBER AND REVISION STATUS ON ITEM 22, BEFORE APPLICATION PER ITEM 703. LOCATE AS SHOWN.
8. USE ITEM 712, COPPER FOIL AS REQUIRED PER IT7514218, ITEM 704.
9. PRIOR TO SECURING ITEM 5 (TX GAIN) AND ITEM 6 (TX FINALS) TO THE HOUSING (ITEM 1), LOCATE ITEMS 5 AND 6 AS CLOSE AS POSSIBLE TO TRANSISTORS Q4 THRU Q7, BUT NO LESS THAN .005.
10. PRIOR TO SECURING Q1, Q2 AND Q3 TO THE HOUSING, MINIMIZE THE COLLECTOR LEAD LENGTH AS MUCH AS POSSIBLE.
11. SOLDER THE LEADS OF Q1 THRU Q7 NO CLOSER THAN .030" (1/32) TO THE BODY OF THE TRANSISTOR.
12. WHEN INSTALLING CABLE ASSEMBLY, ITEM 13, MATING TORQUE SHALL BE 8±1 INCH-POUNDS.
13. APPLY ITEM 716, GLYPT, AS REQUIRED TO TUNING ROD AND RESONATOR OF THE SPECTRUM FILTER ASSEMBLY, ITEM 10, PER IT7514218, ITEM 704.
- 14.
- 15.
16. APPLY ITEM 717, KAPTON TAPE, TO ITEM 2 COVER, AS SHOWN IN SECTION G-G.
17. SECURE THE SPECTRUM FILTER, ITEM 10, TO THE HOUSING WITH FOUR SCREWS, ITEM 31, PRIOR TO INSTALLING THE COVER, ITEM 38.
- 18.
19. SLIDE 1 EACH OF ITEM 40 (FERRITE CORE) OVER CONDUCTORS 602, 604 AND 619 BEFORE INSTALLATION, AS SHOWN IN SECTION H-H.

TERMINATION TABLE

ITEM NO.	REF DES	FROM	TO
37	Z1	FL1	A2E4

BUS WIRE DATA

CONDUCTOR NO.	ITEM NO.	FROM CIRCUIT POINT	TO CIRCUIT POINT	SLEEVING ITEM NO.
601	707	FL2	A2E2	
602	707	FL2	A5E5	
604	707	FL1	A5E1	
605	718	A5E22	A1E2	
606	718	A5E4	A1E3	
607	718	A5E23	A1E4	
608	718	A5E21	A1E1	
609	718	A5E2	A1E7	
610	718	A5E3	A1E8	
611	708	FL3	A1E6	
612	708	FL3	A2E1	
613	707	A3E1	Q4-COLL	
614	707	A3E1	Q5-COLL	
615	707	A3E2	Q6-COLL	
616	707	A3E2	Q7-COLL	
617	707	A2E6	Q3-COLL	
618	707	FL4	A2E3	
619	707	FL4	A5E6	
620	707	FL5	A3E1	
621	707	FL6	A3E2	
622	707	FL2	A2E5	

SEE DETAIL C (SHEET 3)

REVISIONS

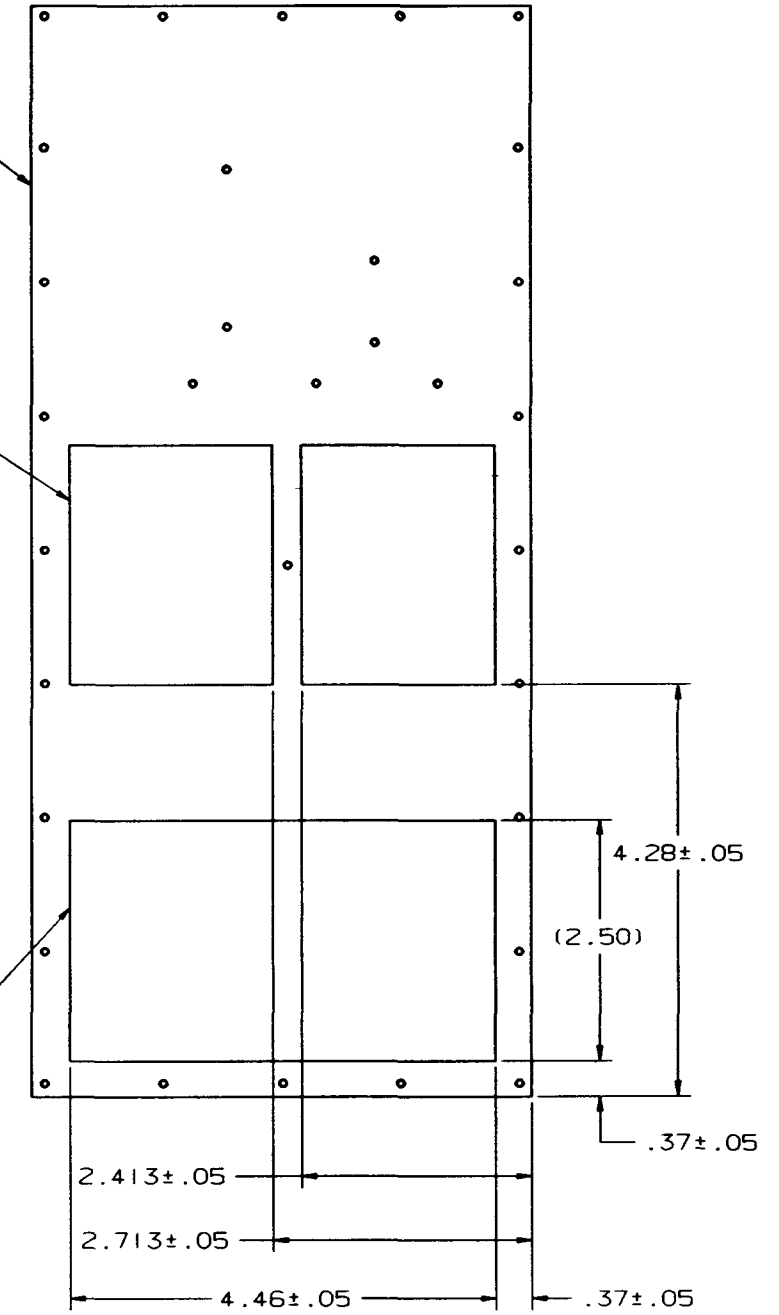
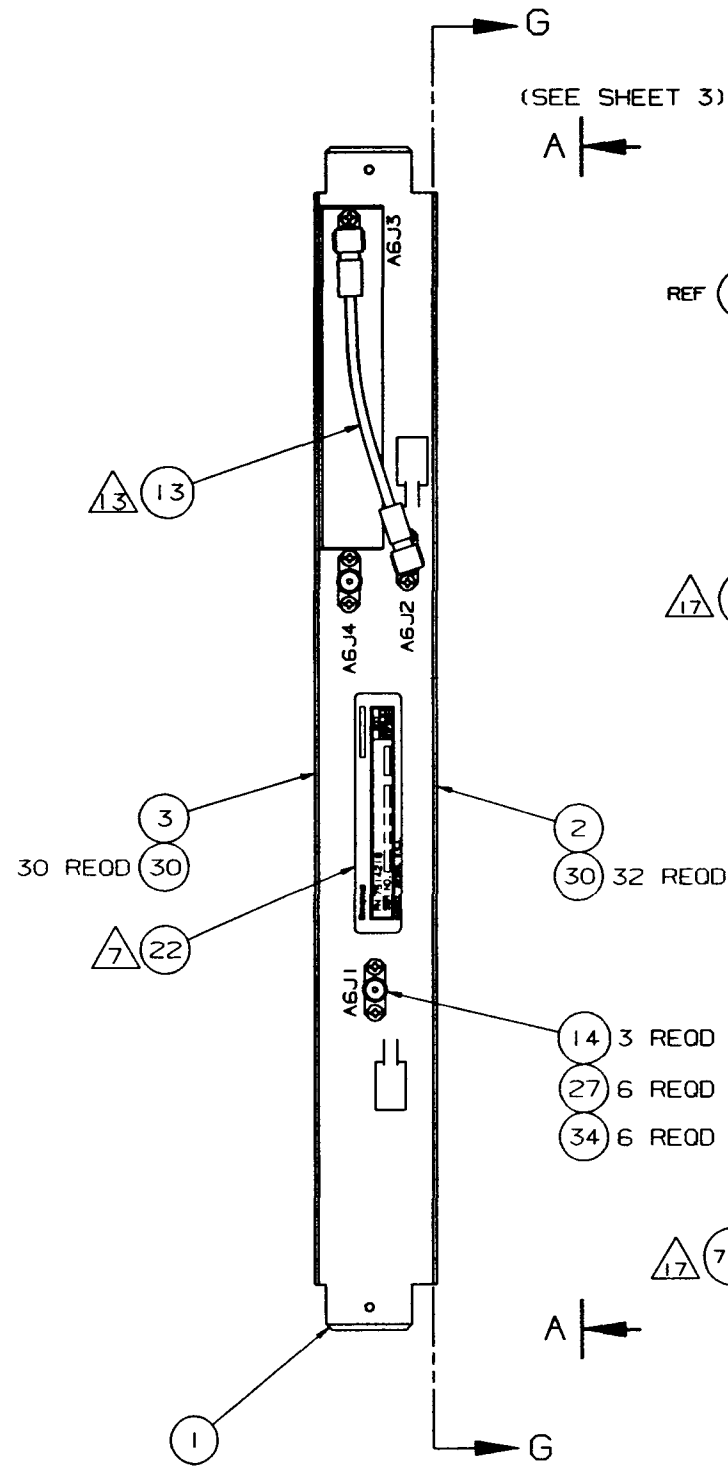
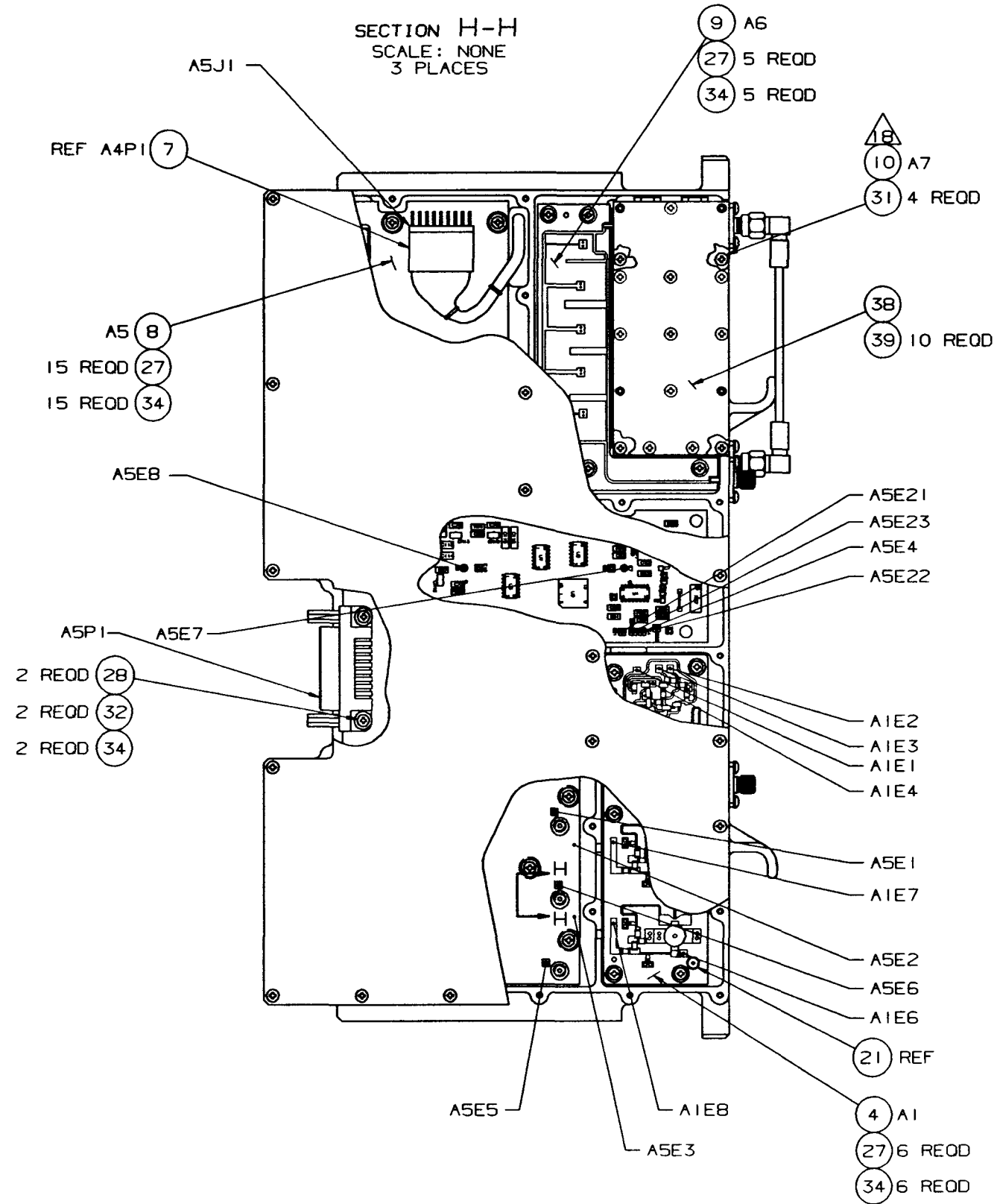
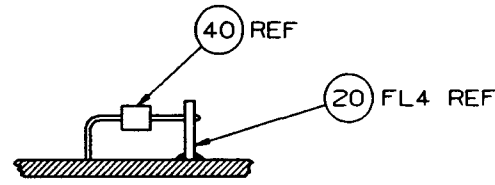
ZONE	REV	DESCRIPTION	DATE	APPROVED
		INITIAL RELEASE	25MAY89	E THIESSEN
A		ADDED NOTES 9 THRU 16 REVISED NOTE 4. REVISED TERMINATION TABLE, DELETED COND NO 603 FROM BUS WIRE TABLE - ADDED COND NO 622 SH IDX REV PL AFFECTED 02784(M-A5)	26JAN90	C DOSDALL NUS
B		NOTES ADD NOTE 17. PL AFFECTED SH IDX REV 27405(M) AFFECTS KITS NOT YET IN-BUILD AND ASSEMBLIES IN BUILD IN STOCK IN RELATED ASSEMBLIES LISTED ON C.O. AND IN ASSEMBLIES THRU END ITEM LEVEL INCLUDING SALES STOCK	25APR90	C DOSDALL JR
C		NOTES ADD NOTE 18. PL AFFECTED SH IDX REV 17158(M) AFFECTS ONLY KITS NOT YET IN BUILD [CONJ 17 58-1 OF 2]	14MAY90	P BORROWITZ JR
D		PL AFFECTED ONLY. BREAK IN ON ASSEMBLIES STARTING 01 JAN 91 OR SOONER	19JAN90	C DOSDALL BETLER JR
E		NOTES NOTE 4 WAS TRIM --- ITEM 16 TO --- FLANGE NOTE 9 WAS PRIOR --- POSSIBLE TO THE EDGE OF THE SLOT FOR Q4 THRU Q7 NOTE 16 WAS APPLY --- GLYPT, TO TUNING --- 704 RMV NOTE 10, 14 AND 15 BUS WIRE DATA TEL COND NO 605 THRU 610 ITEM NO WAS 708, 706, 708, 708, 707 AND 707 RESP. SLEEVING NO WAS 711, 711, 711, 711, 710 AND 710 RESP SH IDX REV PL AFFECTED 17187(M) AFFECTS ONLY KITS NOT YET IN-BUILD	21DEC90	C DOSDALL WALTHER BJ
F		NOTES ADD NOTE 19 SH IDX REV PL AFFECTED 48823(M) AFFECTS KITS NOT YET IN-BUILD AND ASSEMBLIES IN BUILD, IN STOCK, IN RELATED ASSEMBLIES LISTED ON C.O. AND IN ASSEMBLIES THRU END ITEM LEVEL EXCLUDING SALES STOCK	1MARS91	C DOSDALL WALTHER BJ
G		NOTES ADD NOTE 20. SH IDX REV PL AFFECTED 43011(M) AFFECTS ONLY KITS NOT YET IN BUILD	5SEP91	C DOSDALL JURGENS JR
H		NOTE 7 WAS TYPE---NUMBER BEFORE---SHOWN NOTE 13 WAS WHEN---BE 7-10 INCH-POUNDS RMV NOTE 9 SH IDX REV. PL AFFECTED 48647(B) OR SOONER	5SEP91	C DOSDALL JURGENS JR
J		SH IDX REV PL AFFECTED 111030(B) BREAK IN ON ASSEMBLIES STARTING 24FEB92 OR SOONER	14MAY92	C DOSDALL BARLOW BJ
K		SH IDX REV PL AFFECTED 78794(M) AFFECTS ONLY KITS NOT YET IN-BUILD	10 DEC 92	C DOSDALL JURGENS JR

REV STATUS OF PARTS LIST SHALL BE SAME AS BASIC DRAWING NUMBER SEE SEPARATE PARTS LIST

45 44 43 42 41 40 39 38 37 36 35 34 33 32 31 30 29 28 27 26 25 24 23 22 21 20 19 18 17 16 15 14 13 12 11 10 9 8 7 6 5 4 3 2 1		J K K REV SHEET INDEX	CONTRACT	OPERATIONAL NOTE	
FOR HONEYWELL REFERENCE		INTERPRET DIMENSIONS AND TOLERANCES PER ANSI Y14.5M-1982	UNLESS OTHERWISE SPECIFIED DIMENSIONS ARE IN INCHES TOLERANCES ANGLES ± --- 2 PL DEC ± --- 3 PL DEC ± ---		DRAWN BY DATE K FREY 17APR89
MFG REF NO	DPA NO R-0742	MATL PROCESS-FINISH	MILITARY DESIGNATION	MATERIAL PROCESS, FINISH SEE 00 40	DESIGNED BY DATE
PRODUCT LINE NO 3841	AW/PS ANALYSIS EB 4054939	THIRD ANGLE PROJECTION		ITEM CODE (PER EB699384)	CHECKED BY DATE G LARSON 24MAY89
REF DWG	REF SPEC	Dwg CLASS A		APVD FOR MFG DATE R BUSBOOM 24MAY89	APVD FOR DE DATE
4066010	4066010	FIRST USED ON 4066010		APVD FOR ENGRG DATE C DOSDALL 24MAY89	APVD FOR ENGRG DATE B BRETTNER 25MAY89
NEXT ASSY	USED ON (SYS)	APPLICATION		APVD FOR DATE	APVD FOR DATE
SIZE/SCALE CODE D155939		DRAWING NO 7514218		REV K	
SCALE 1/1 UNIT WT		SHEET 1 OF 3			

8840A Nov 30, 1993 13 29 MS K26E5

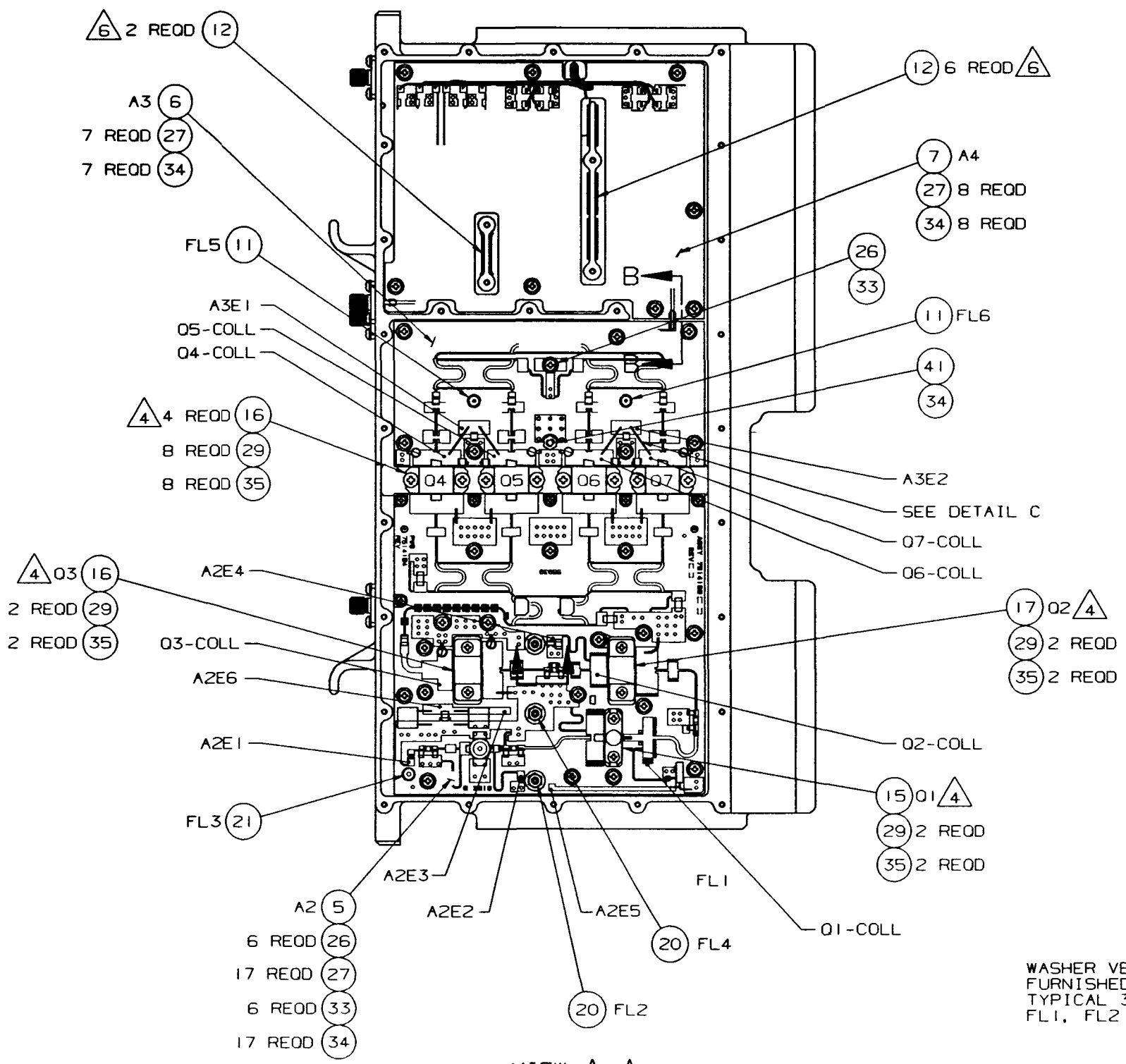
7514218				REVISIONS					
ZONE	REV	DESCRIPTION	DATE	APPROVED	ZONE	REV	DESCRIPTION	DATE	APPROVED
CB	K	VIEW B ITEM 8 CALLOUT. REF WAS (A5) ADD B ITEM 9 CALLOUT SEE SH 1	78794 (M)	JURGENS FM	A	A	UPD'D VIEWS	02784 (M-A5)	26JAN80 C.DOSDALL NLS
					B	B	VIEW ADD SECTION G-G SEE SH 1	27405 (M)	25APR80 C.DOSDALL JW
					C	C	VIEW RMV B ITEM 9, 27 AND 34 38 AND 39 ADD NOTE 18 (REF). SEE SH 1	17158 (M)	14MAY80 P.BOBROWITZ JW
					B3, 4	F	UDTD VIEW ADD NOTE 19 CALLOUT. SEE SH 1	48823 (M)	1MAY81 C.DOSDALL WALTHER BJ
					D6 B6	G	UDTD VIEW: ADD SECTION H-H SEE SH 1	43011 (M)	5SEP81 C.DOSDALL JURGENS JW
					A, B7 C5 B3, 4	H	UDTD VIEW RMV DIM .752 05 (2X) - RELOCATE B ITEM 22. RMV NOTE 19 CALLOUT. B ITEM 38 ADD NOTE 5 REF. SEE SH 1	48647 (B)	5SEP81 C.DOSDALL JURGENS JW
					A4, 6 D4-6 A-C2 B3	J	UDTD VIEW: ADD DIM 2.413±.05 AND 2.713 ±.05. B ITEM 2 CALLOUT. 32 REOD REF WAS 31 REOD RMV B ITEM 23 CALLOUT. SEE SH 1	111030 (B)	14MAY82 C.DOSDALL BARLOW BJ



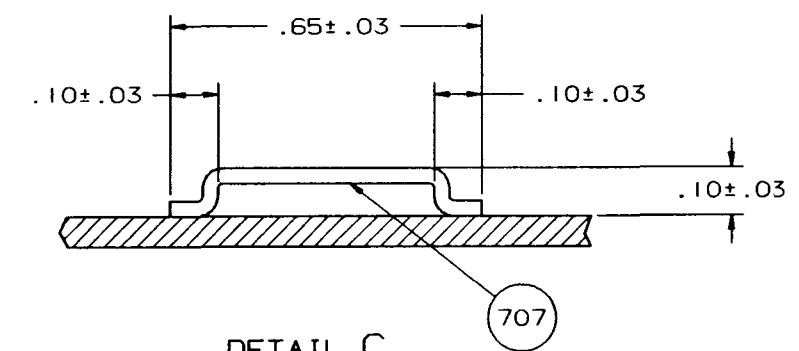
SECTION G-G  
SCALE: NONE  
(INSIDE SURFACE OF ITEM 2 COVER)

Honeywell	SEE FIRST SHEET FOR CONTRACT NUMBER USE OR DISCLOSURE OF INFORMATION ON THIS SHEET IS SUBJECT TO THE RESTRICTIONS ON THE FIRST SHEET OF THIS DOCUMENT	SIZE/CAGE CODE D 55939	DRAWING NO 7514218	REV K
	SCALE 1/1	SHEET 2		

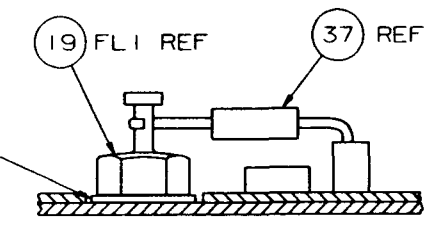
REV NO		REVISIONS		DATE	APPROVED
	A	ADDED VIEW D-D, DETAIL E AND F, UPDTD VIEW - MANY CHANGES		16JAN90	C DOSDALL NLS
B4,5 C, D4	E	VIEW A-A B ITEM 15 CALLOUT RMV NOTE 14 AND REF DETAIL E B ITEM 17 CALLOUT RMV NOTE 15 AND REF DETAIL F RMV DET E AND F.		21DEC90	C DOSDALL WALTER BU
B, C6	J	UPDTD VIEW ADD B ITEM 41 CALLOUT B ITEM 6 CALLOUT. REF 7 REOD(2X) WAS B REOD		14MAY92	C DOSDALL BARLOW BU



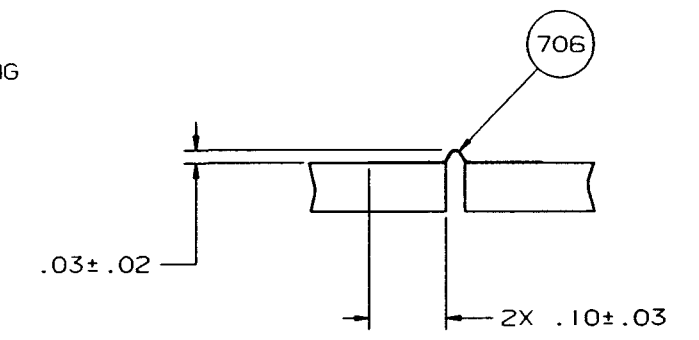
VIEW A-A  
COVER (ITEM 2) REMOVED  
FROM THIS VIEW FOR CLARITY



DETAIL C  
SCALE: NONE  
5X  
(VIEW SHOWN LOOKING  
FROM SIDE)



SECTION D-D  
SCALE: NONE



VIEW B-B  
SCALE NONE  
(ROTATED 90° CCW)

8840A Nov 30, 1993 16 04 MS K26E5