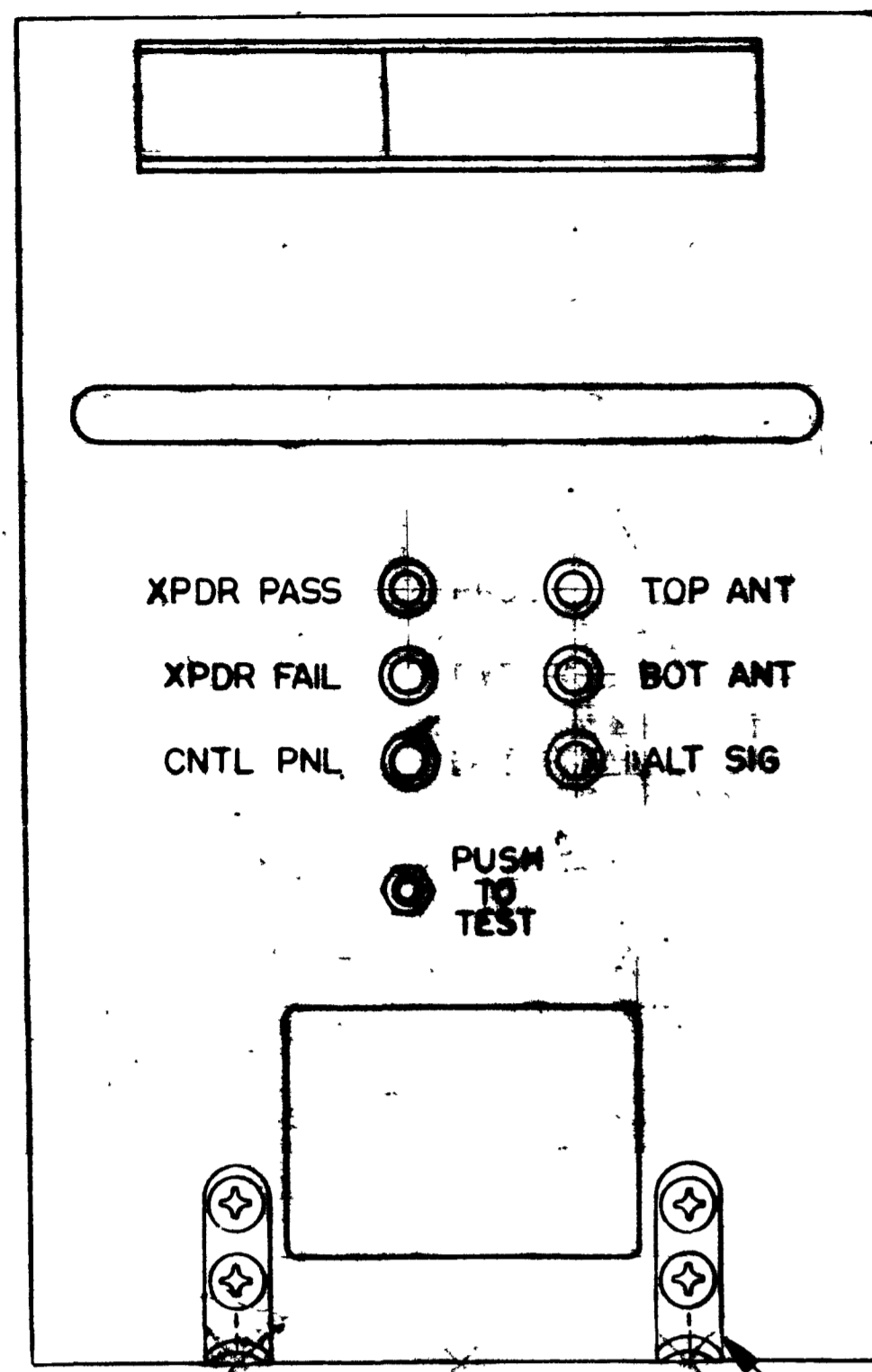


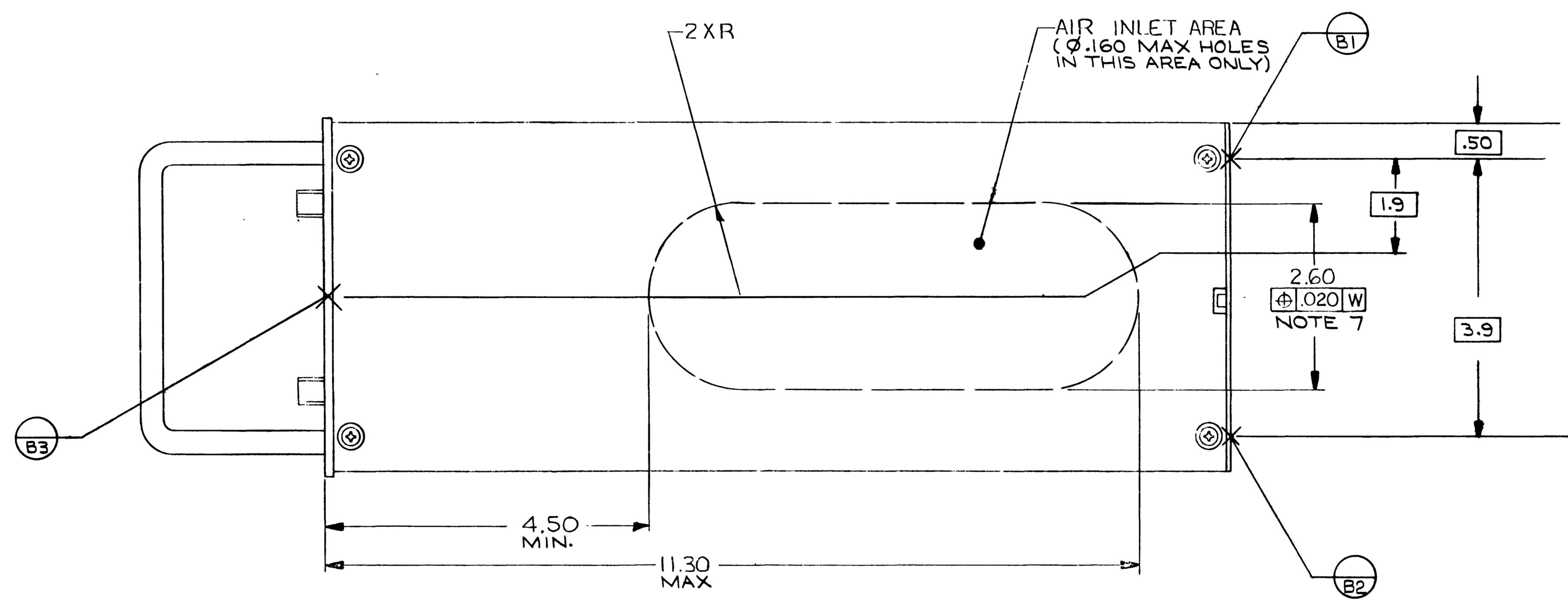
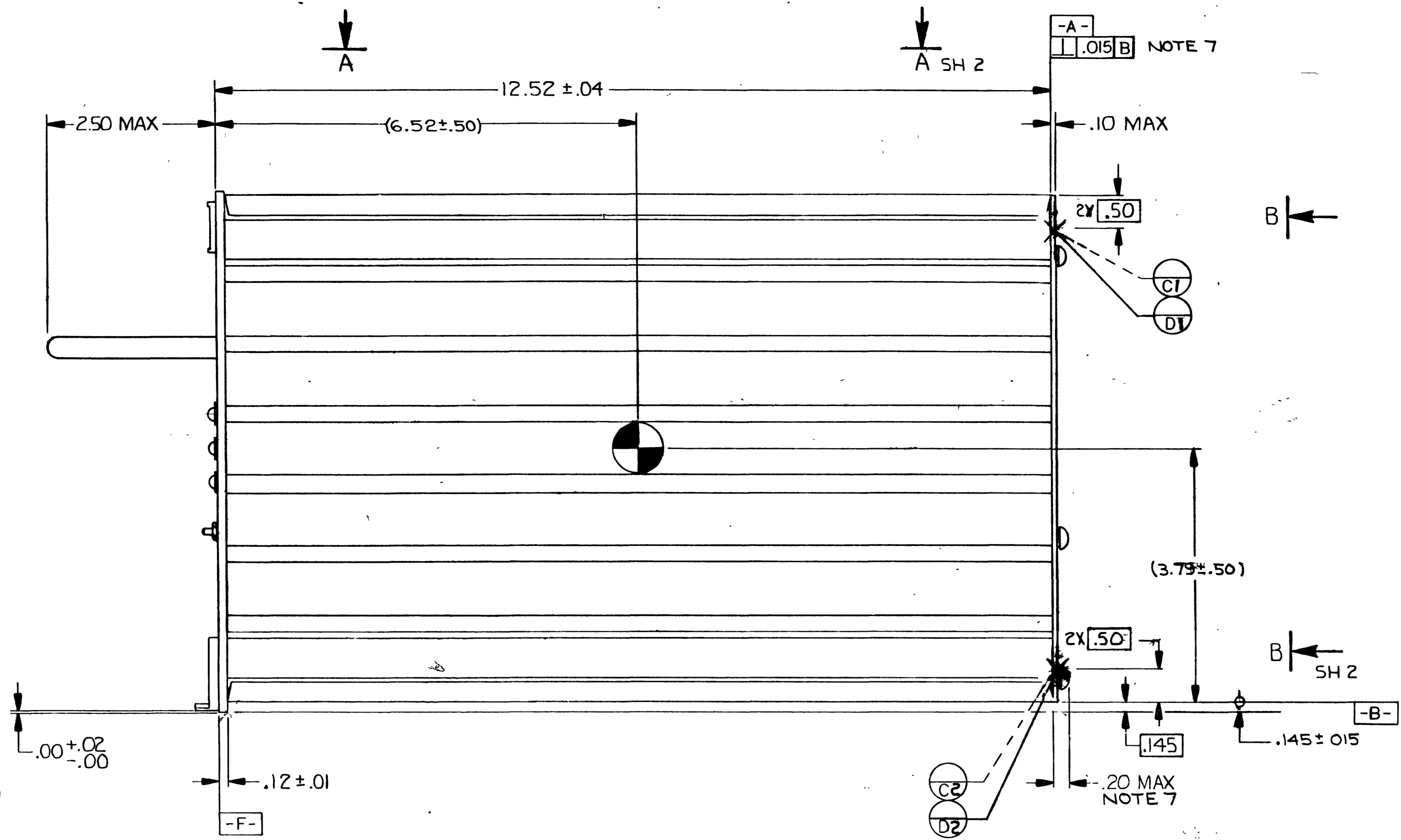
PROPRIETARY NOTICE
 THIS DOCUMENT AND THE INFORMATION DISCLOSED HEREIN ARE PROPRIETARY DATA OF HONEYWELL INC. NEITHER THIS DOCUMENT NOR THE INFORMATION CONTAINED HEREIN SHALL BE REPRODUCED, USED, OR DISCLOSED TO OTHERS WITHOUT THE WRITTEN AUTHORIZATION OF HONEYWELL INC.

NOTICE
 FREEDOM OF INFORMATION ACT (5 USC 552) AND
 DISCLOSURE OF CONFIDENTIAL INFORMATION GENERALLY
 (18 USC 1805)

THIS DOCUMENT IS BEING FURNISHED IN CONFIDENCE BY HONEYWELL INC. THE INFORMATION DISCLOSED HEREIN FALLS WITHIN EXEMPTION (b) (4) OF 5 USC AND THE PROHIBITIONS OF 18 USC 1805.



(MOUNTING HOOKS CONFORM TO NA622CE2)



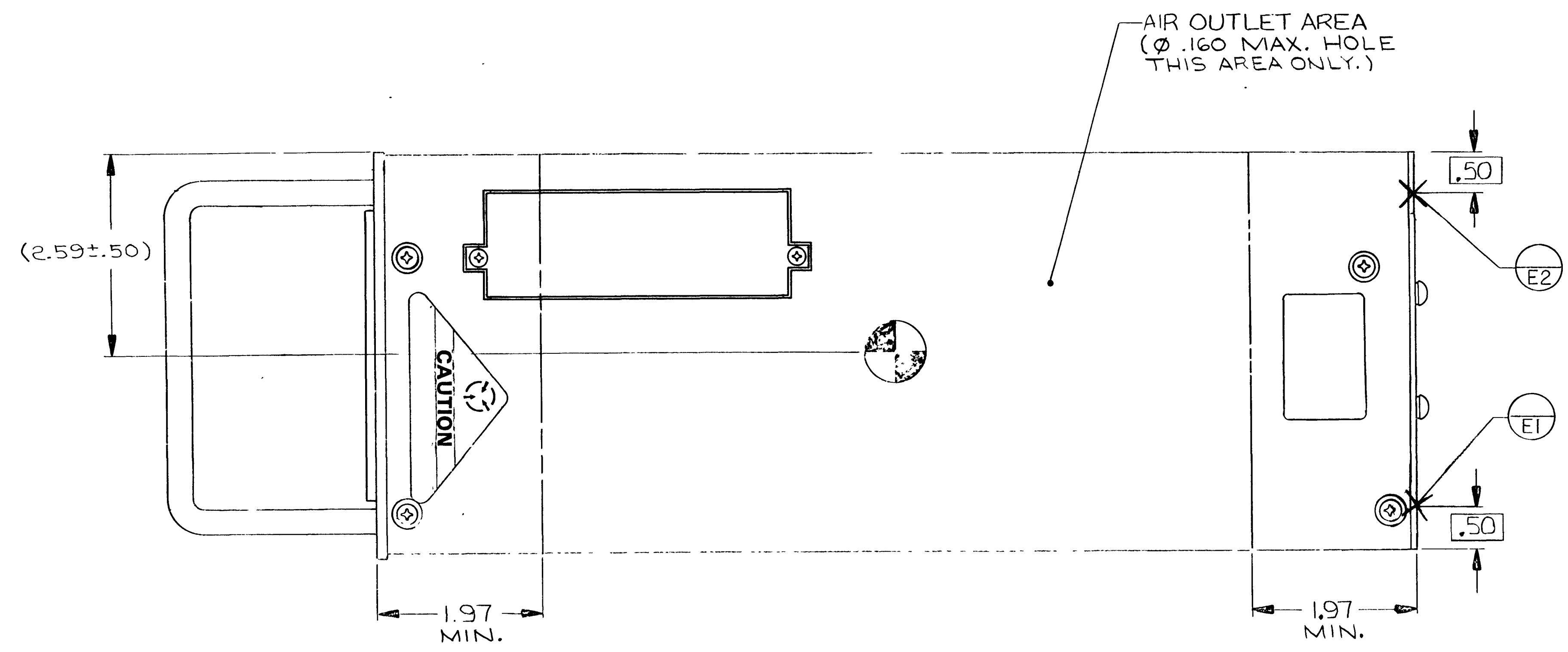
METRIC CONVERSION TABLE	
INCHES	MILLIMETERS
.01	.25
.015	.381
.02	.51
.025	.635
.04	1.02
.08	2.03
.10	2.54
.12	3.05
.145	3.683
.20	5.08
.50	12.70
.81	20.57
1.00	25.40
1.90	48.26
1.97	50.04
2.32	58.928
2.50	63.502
2.59	65.786
2.600	66.040
3.79	96.266
3.90	98.06
4.50	114.30
4.88	123.59
6.52	165.608
6.890	175.010
7.64	194.06
11.30	287.02
12.52	318.01

- NOTES:**
1. MAXIMUM UNIT WEIGHT: 145 LBS. (6.6 KG.)
 2. ⦿ DENOTES APPROXIMATE CENTER OF GRAVITY.
 3. DARKENED PORTION INDICATES SOLID PART OF CONNECTOR POLARIZING KEYWAYS.
 4. [-W-] APPLIES TO WIDTH MEASURE BETWEEN DATUM SURFACES [-C-] AND [-D-] REMAINDER OF UNIT CONTOUR SHALL NOT EXCEED [-W-] BEHIND FRONT PLATE.
 5. CROSSED HATCHED AREA DEFINED AS ZONE A. NO OTHER PROJECTIONS EXCEPT CONNECTOR MOUNTING HARDWARE PERMITTED IN THIS AREA. PROJECTIONS OUTSIDE ZONE A SHALL NOT EXCEED .20, REF NOTE 7, FROM [-A-].
 6. BOTTOM SURFACE OF CONNECTOR LOCATOR BOSS MUST BE FLUSH WITH [-B-] OR EXTENDED NO MORE THAN .01 BELOW [-B-].
 7. DIMENSIONS REFERENCING THIS NOTE ARE ARINC 600 INSTALLATION FEATURES AND ARE CONTROLLED BY DESIGN ON LOWER LEVEL DRAWINGS. THESE FEATURES ARE INSPECTABLE ONLY AT THE LOWER LEVEL DRAWINGS.

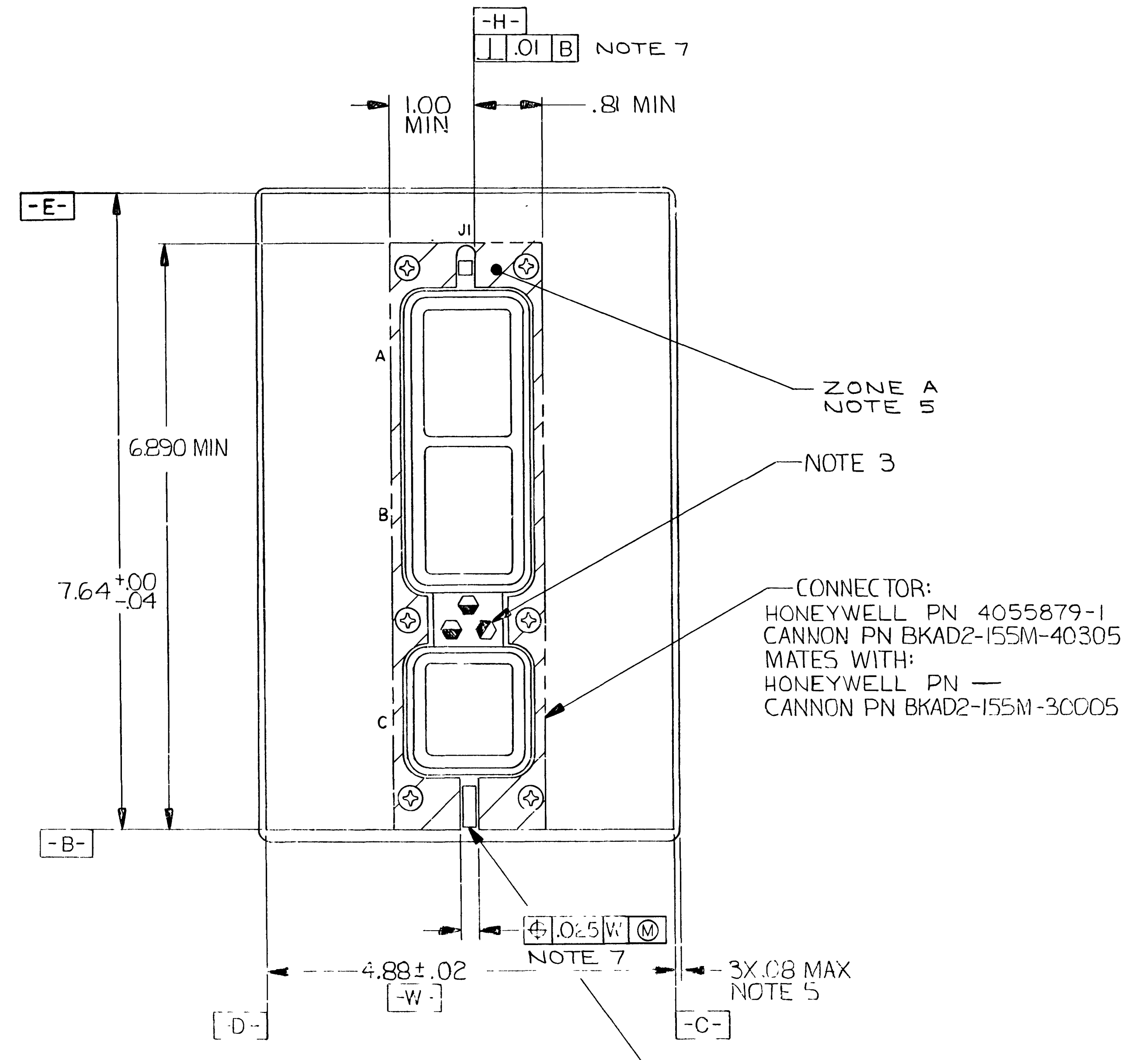
REVISIONS				
ZONE	REV	DESCRIPTION	DATE	APPROVED
FB	67	INITIAL RELEASE	22 MAY 88	
A		NOTES: NOTE 1 WAS MAXIMUM UNIT WEIGHT. TSD LBS. (TSD KG). VIEW RMV MARKINGS PASS, SYS FAIL, AND XPDR FAIL. ADD MARKINGS XPDR PASS, XPDR FAIL, CNTL FAIL, TOP ANT, BOT ANT, AND ALT SIG. UPD TD VIEW. SH IDX REV. 116041(M)	08 NOV 88	
B		NOTES: NOTE 5 EXTENSIVELY REV. ADD NOTE 6 AND 7. METRIC CVRSN TBL: INCL CLMN ADD 1.90, 3.90, 3.79, 2.59 AND 6.52. UDTD VIEW: ADD NOTE 7 CALLOUT 4 PL. DIM. (6.52 ± .50) AND (3.79 ± .50) WAS TSD. RELOCATE DATUM TARGETS B1, B2, AND B3. ADD DIMS. FOR DATUM B TARGETS. ADD MMC TO FEATURE CONTROL FRAME. SH IDX REV. 18901 (NA)	18 MAY 89	
C		TIB: APPL BLK; NEXT ASSY AND USED ON. ADD PN 4061400-902. SH IDX REV. 13758(M)	21 FEB 90	
D		SH IDX REV. 18761(M)	22 MAR 90	
E		SH IDX REV. 13763 (NA)	16 APR 90	
F		SH IDX REV. 13676(M)	22 JUN 90	
G		SH IDX REV. 13683 (M)	08 AUG 90	
H		SH IDX REV. 13685 (M)	07 NOV 90	
J		APPL BLK; NEXT ASSY AND USED ON (SYS); ADD PN 4061400-903, -904 AND -905. ADD FREEDOM PROP LABEL. SH IDX REV. 41026 (NA)	08 JAN 91	
K		SH IDX REV. WAS SH 1 OF 2. 41033(NA)	08 JAN 92	

TABLE OF QTY PER DASH NO.		ITEM NO.	QTY	FSCM	NUMBER	PART OR IDENTIFYING NUMBER	NOMENCLATURE	DESCRIPTION	CODE																																														
SPECIAL SYMBOLS: X NO SPECIFIC QUANTITY REQUIRED (QTY TABLE) * BASIC PART NUMBER (QTY TABLE) A MATERIAL CODE (NOT A DWG) - NOT APPLICABLE (QTY TABLE)																																																							
FIND (ITEM) NUMBERS: 1 TO 499 ITEM NO. SERIES - ASSEMBLY, DETAIL, AND MATERIAL ITEMS 500 ITEM NO. SERIES - AW/PS CRITICAL ITEMS 600 ITEM NO. SERIES - SPECIAL CONFIGURATION CONTROL ITEMS 700 ITEM NO. SERIES - REF DOCUMENTS AND BULK OR SUNDRY ITEMS 800 ITEM NO. SERIES - EMP/RADIATION HARD ITEMS																																																							
CODE LEGEND: 1 SELECT AT ASSEMBLY (FIRST SELECT ITEM) 2 SUBSEQUENT SELECT 3 ASSEMBLY 4 BULK OR SUNDRY ITEM 5 REFERENCE DOCUMENT 7 MACHINED CASTING DWG (ALTERED ITEM) 8 SELECT PER AQ OR MI 9 VENDOR (SUPPLIER) ITEM-SPEC/SOURCE DWG # CUSTOMER FURNISHED ITEM																																																							
<table border="1"> <tr> <td>45</td><td>44</td><td>43</td><td>42</td><td>41</td><td>40</td><td>39</td><td>38</td><td>37</td><td>36</td><td>35</td><td>34</td><td>33</td><td>32</td><td>31</td><td>30</td><td>29</td><td>28</td><td>27</td><td>26</td><td>25</td><td>24</td><td>23</td><td>22</td><td>21</td><td>20</td><td>19</td><td>18</td><td>17</td><td>16</td><td>15</td><td>14</td><td>13</td><td>12</td><td>11</td><td>10</td><td>9</td><td>8</td><td>7</td><td>6</td><td>5</td><td>4</td><td>3</td><td>2</td><td>1</td><td>SHEET</td> </tr> </table>										45	44	43	42	41	40	39	38	37	36	35	34	33	32	31	30	29	28	27	26	25	24	23	22	21	20	19	18	17	16	15	14	13	12	11	10	9	8	7	6	5	4	3	2	1	SHEET
45	44	43	42	41	40	39	38	37	36	35	34	33	32	31	30	29	28	27	26	25	24	23	22	21	20	19	18	17	16	15	14	13	12	11	10	9	8	7	6	5	4	3	2	1	SHEET										
<table border="1"> <tr> <td>FOR</td> <td>REFERENCE</td> <td>INTERPRET DIMENSIONS AND TOLERANCES PER ANSI Y14.5M-1982</td> <td>ANGLES ±</td> <td>2 PL DEC ± .02</td> <td>3 PL DEC ±</td> </tr> <tr> <td>MFG REF NO.</td> <td>DC 25209</td> <td>MATL-PROCESS-FINISH</td> <td>MILITARY DESIGNATION</td> <td>REPT - MATERIAL PROCESS, FINISH, SEC. 00.40.</td> <td>ITEM CODE#</td> </tr> <tr> <td>PRODUCT LINE NO.</td> <td>3834</td> <td>MATL</td> <td></td> <td>(PER EB699384)</td> <td></td> </tr> <tr> <td>AW/PS ANALYSIS EB</td> <td>4055000</td> <td>PROCESS</td> <td></td> <td></td> <td></td> </tr> <tr> <td>REF DWG</td> <td></td> <td>FINISH</td> <td></td> <td></td> <td></td> </tr> </table>										FOR	REFERENCE	INTERPRET DIMENSIONS AND TOLERANCES PER ANSI Y14.5M-1982	ANGLES ±	2 PL DEC ± .02	3 PL DEC ±	MFG REF NO.	DC 25209	MATL-PROCESS-FINISH	MILITARY DESIGNATION	REPT - MATERIAL PROCESS, FINISH, SEC. 00.40.	ITEM CODE#	PRODUCT LINE NO.	3834	MATL		(PER EB699384)		AW/PS ANALYSIS EB	4055000	PROCESS				REF DWG		FINISH																			
FOR	REFERENCE	INTERPRET DIMENSIONS AND TOLERANCES PER ANSI Y14.5M-1982	ANGLES ±	2 PL DEC ± .02	3 PL DEC ±																																																		
MFG REF NO.	DC 25209	MATL-PROCESS-FINISH	MILITARY DESIGNATION	REPT - MATERIAL PROCESS, FINISH, SEC. 00.40.	ITEM CODE#																																																		
PRODUCT LINE NO.	3834	MATL		(PER EB699384)																																																			
AW/PS ANALYSIS EB	4055000	PROCESS																																																					
REF DWG		FINISH																																																					
<table border="1"> <tr> <td>4061400-905</td> <td>4061400-905</td> <td></td> <td></td> <td></td> <td></td> </tr> <tr> <td>4061400-904</td> <td>4061400-904</td> <td></td> <td></td> <td></td> <td></td> </tr> <tr> <td>4061400-903</td> <td>4061400-903</td> <td></td> <td></td> <td></td> <td></td> </tr> <tr> <td>4061400-902</td> <td>4061400-902</td> <td></td> <td></td> <td></td> <td></td> </tr> <tr> <td>4061400-901</td> <td>4061400-901</td> <td></td> <td></td> <td></td> <td></td> </tr> </table>										4061400-905	4061400-905					4061400-904	4061400-904					4061400-903	4061400-903					4061400-902	4061400-902					4061400-901	4061400-901																				
4061400-905	4061400-905																																																						
4061400-904	4061400-904																																																						
4061400-903	4061400-903																																																						
4061400-902	4061400-902																																																						
4061400-901	4061400-901																																																						
<table border="1"> <tr> <td>CONTRACT</td> <td>OPERATIONAL NOTE</td> </tr> <tr> <td>DRAWN BY: <i>Mike...</i> DATE: 25-MAY-88</td> <td rowspan="4"> Honeywell FLIGHT SYSTEMS PHOENIX, ARIZONA OUTLINE AND INSTALLATION OF - TRANSPONDER, MODE S </td> </tr> <tr> <td>DESIGNED BY: <i>...</i> DATE: 26-MAY-88</td> </tr> <tr> <td>CHECKED BY: <i>...</i> DATE: 26-MAY-88</td> </tr> <tr> <td>APVD FOR: <i>...</i> DATE: 26-MAY-88</td> </tr> <tr> <td>APVD FOR: <i>...</i> DATE: 26-MAY-88</td> <td> TITLE: OUTLINE AND INSTALLATION OF - TRANSPONDER, MODE S SIZE/FSCM NO.: E 58960 DRAWING NO.: 4061401 SCALE 1/1 UNIT WT SHEET 1 OF 3 </td> </tr> </table>										CONTRACT	OPERATIONAL NOTE	DRAWN BY: <i>Mike...</i> DATE: 25-MAY-88	Honeywell FLIGHT SYSTEMS PHOENIX, ARIZONA OUTLINE AND INSTALLATION OF - TRANSPONDER, MODE S	DESIGNED BY: <i>...</i> DATE: 26-MAY-88	CHECKED BY: <i>...</i> DATE: 26-MAY-88	APVD FOR: <i>...</i> DATE: 26-MAY-88	APVD FOR: <i>...</i> DATE: 26-MAY-88	TITLE: OUTLINE AND INSTALLATION OF - TRANSPONDER, MODE S SIZE/FSCM NO.: E 58960 DRAWING NO.: 4061401 SCALE 1/1 UNIT WT SHEET 1 OF 3																																					
CONTRACT	OPERATIONAL NOTE																																																						
DRAWN BY: <i>Mike...</i> DATE: 25-MAY-88	Honeywell FLIGHT SYSTEMS PHOENIX, ARIZONA OUTLINE AND INSTALLATION OF - TRANSPONDER, MODE S																																																						
DESIGNED BY: <i>...</i> DATE: 26-MAY-88																																																							
CHECKED BY: <i>...</i> DATE: 26-MAY-88																																																							
APVD FOR: <i>...</i> DATE: 26-MAY-88																																																							
APVD FOR: <i>...</i> DATE: 26-MAY-88	TITLE: OUTLINE AND INSTALLATION OF - TRANSPONDER, MODE S SIZE/FSCM NO.: E 58960 DRAWING NO.: 4061401 SCALE 1/1 UNIT WT SHEET 1 OF 3																																																						

REVISIONS				
ZONE	REV	DESCRIPTION	DATE	APPROVED
F5,7	B	UTD VIEW A-A: DIM (2.59±.50) WAS (2.32). UTD VIEW B-B: ADD NOTE 6,7, AND ZONE A CALLOUT. 18901 (NA)	18 MAY 89	
D7	C	ADD MOD STAT TBL. 13758(M)	21 FEB 90	
	D	MOD STAT TBL: ADD MOD LTR B. MOD LTR A REF DOCUMENT COL, ADD FSB NUMBER. 13761(M)	20 MAR 90	
	E	MOD STATUS TBL: ADDED APPLICABLE MOD LTR COLUMN AND -901 THRU -903 RESP. 13763 (NA)	16 APR 90	
	F	MOD STAT TBL: ADD MOD LTR A FOR -903 VAR. 13676(M)	22 JUN 90	
	G	MOD STAT TBL: APPLICABLE MOD LTR COL -903 ADD MOD LTR B. 13683 (M)	08 AUG 90	
	H	MOD STAT TBL: ADD APPLICABLE MOD LTR COL -904, APPLICABLE MOD LTR COL -903 ADD MOD LTR C. 13695 (M)	07 NOV 90	
	K	MOD STAT TBL: ADD APPLICABLE MOD LTR COL -905, APPLICABLE MOD LTR COL -904, ADD MOD LTR B, RELOCATE MOD TBL TO SH B. 41033(NA)	08 JAN 92	



VIEW A-A



VIEW B-B

REVISIONS				
ZONE	REV	DESCRIPTION	DATE	APPROVED
	K	ADD THIS SHEET.	08 JAN 92	<i>[Signature]</i>
		41033(JA)		

MODIFICATION STATUS TABLE								
APPLICABLE MOD LTR					REF DOCUMENT	REMARKS	AFFECTED SUB ASSEMBLY	AFFECTED SERIAL NO.
-905	-904	-903	-902	-901				
			A		FSB 21-3834-01	INTERCHANGED ALT TYP SEL A WAS XA2-66, AND B WAS XA2-154, ON MOTHERBOARD TO MEET ARINC T18 ALT TYP SEL NOMENCLATURE.	RACK, 4061402-901	XXXX0101 AND UP
			B		FSB 21-3834-02	CHANGED A2-UE4 FROM -101 TO -103, BLOCKS NON-TESTED VIDEO PATH DURING MODE S SELF TEST. REDUCED TRANSMIT DETECTOR THRESHOLD, 2.5dB, TO ELIMINATE ERRONEOUS PWR VLD SELF TEST FAILURES. RECALIBRATED SPR TIMING.	A2, 4061442-902 REV F A4, 7514150-902 REV D, MOD A	XXXX0101 AND UP
			A		FSB 21-3834-03	INTERCHANGED MAX AIRSPEED IS, WAS XA2-157, AND IT, WAS XA2-156, ALSO ALT FAIL 1, WAS XA2-57, AND 2, WAS XA2-83 TO MEET ARINC T18 SPEC.	WL4061402-901 REV C USED ON RACK, 4061402-901	ALL
			B		FSB 24-3834-03	NEW SOFTWARE, PART NUMBER PS4067467-905, ELIMINATES NUISANCE MODE A AND MODE C FAILURES IN SELF TEST.	A1; 4067465 REV J.	ALL
	A		C		FSB 21-3834-05 21-3834-06	REDUCES SENSITIVITY TO 1030 MHZ CW INTERFERENCE, (ADD 3 RESISTORS AND 2 CAPACITORS AND CHANGES 7 RESISTOR VALUES IN RECEIVER.)	A4, 7514150-902 REV E, MOD B	ALL
		B			FSB 21-3834-08	IMPROVES POWER INTERRUPT PERFORMANCE BY INCREASING NOISE IMMUNITY IN THE POWER SUPPLY.	A3; 4061409-902 REV C	ALL
	A				FSB 24-3834-08 21-3834-09	NEW SOFTWARE, PART NUMBER PS4067467-907, TO INCORPORATE CHANGE 3 REQUIREMENTS. IMPROVE POWER INTERRUPT PERFORMANCE BY INCREASING NOISE IMMUNITY IN THE POWER SUPPLY.	A1; 4067465 REV M A3; 4061409-902 REV C	ALL