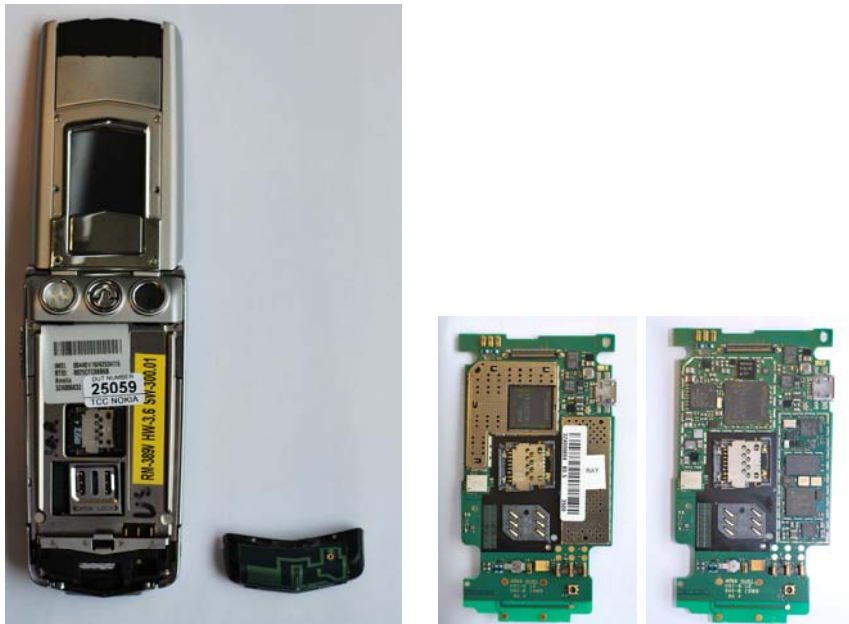


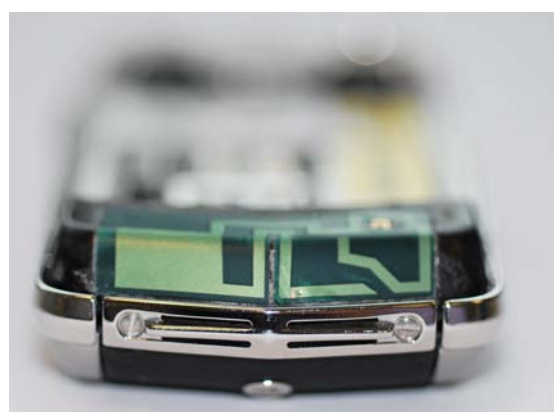
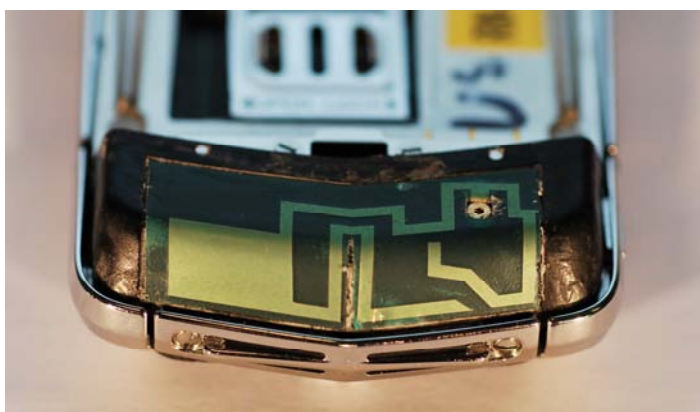


PRODUCT PICTURES (INTERNAL)

Back views showing Main PWB and Antenna (GSM/WCDMA/BT) module removed, at bottom of the phone.



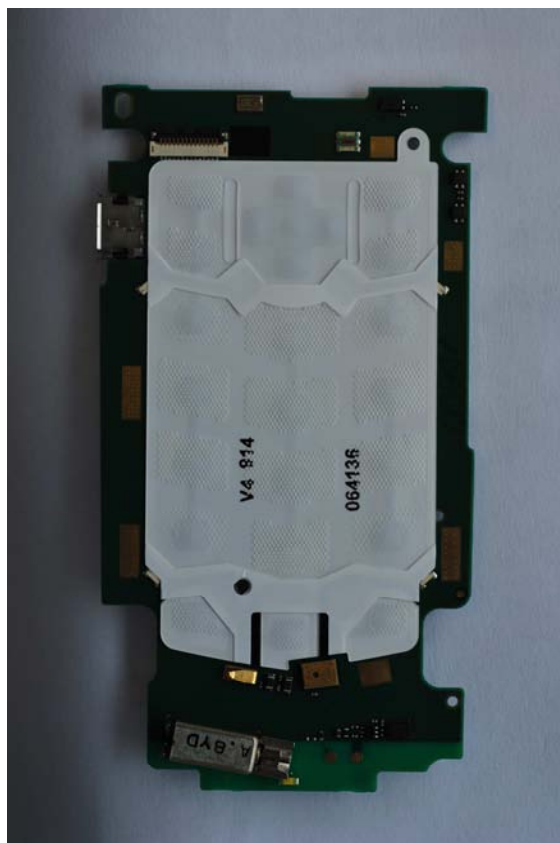
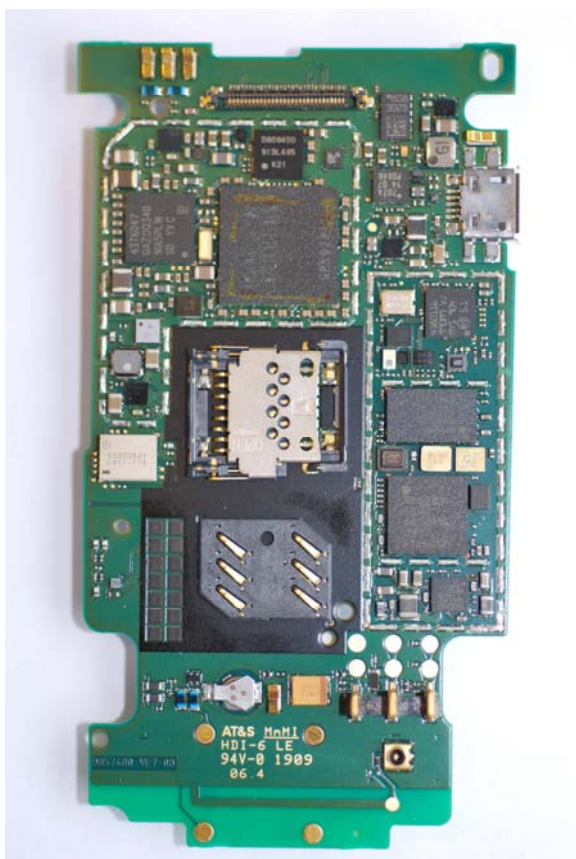
GSM/WCDMA Main Antenna close-up



Auxillary BT Antenna

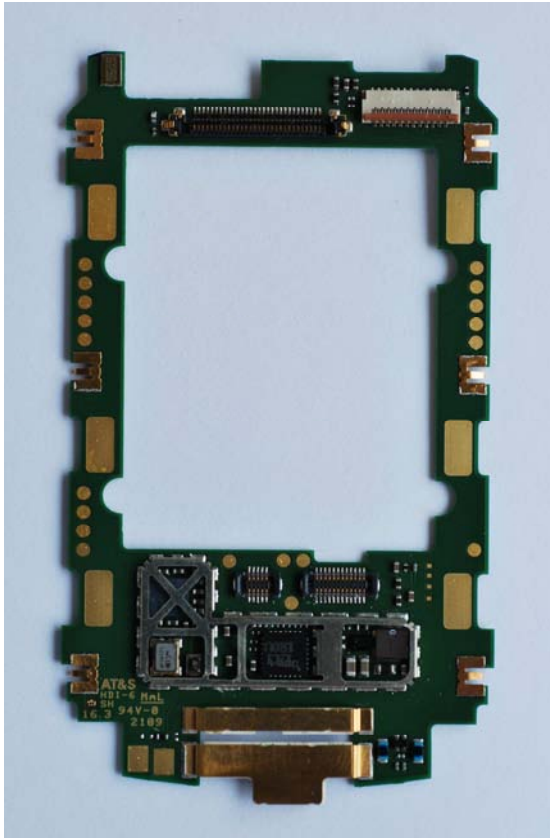


Close-up of Main PWB, showing components with screening cans removed and keymat assembly, on reverse side.





Secondary PWB showing component placement side





Phone open showing AUX display (outside)



Phone open showing MAIN display (inside)

