

Photographs of P7QRHV-1 Mobile Phone

AUGUST 2003



Exhibit 1: INTERNAL View of Vertu FCCID: P7QRHV-1 ,
battery cover removed to show location of

TYPE DESIGNATION LABEL, and SIM card holder.

Photographs of P7QRHV-1 Mobile Phone

AUGUST 2003

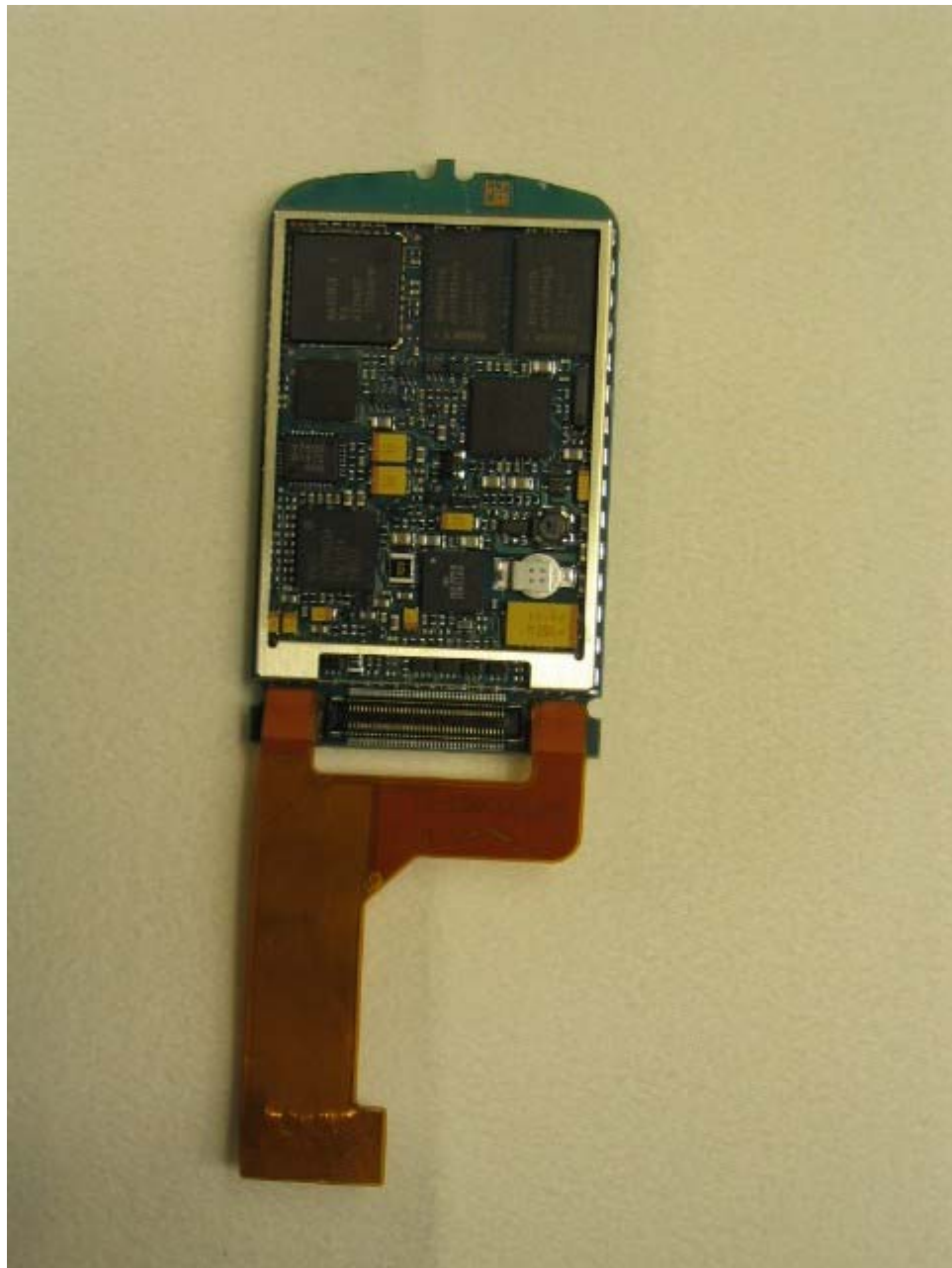


Exhibit 2: INTERNAL VIEW of Vertu FCCID:P7QRHV-1
Showing Circuitry.

Bottom View of Printed wire Board, with removable shielding
cans removed to show baseband circuitry.

Photographs of P7QRHV-1 Mobile Phone

AUGUST 2003

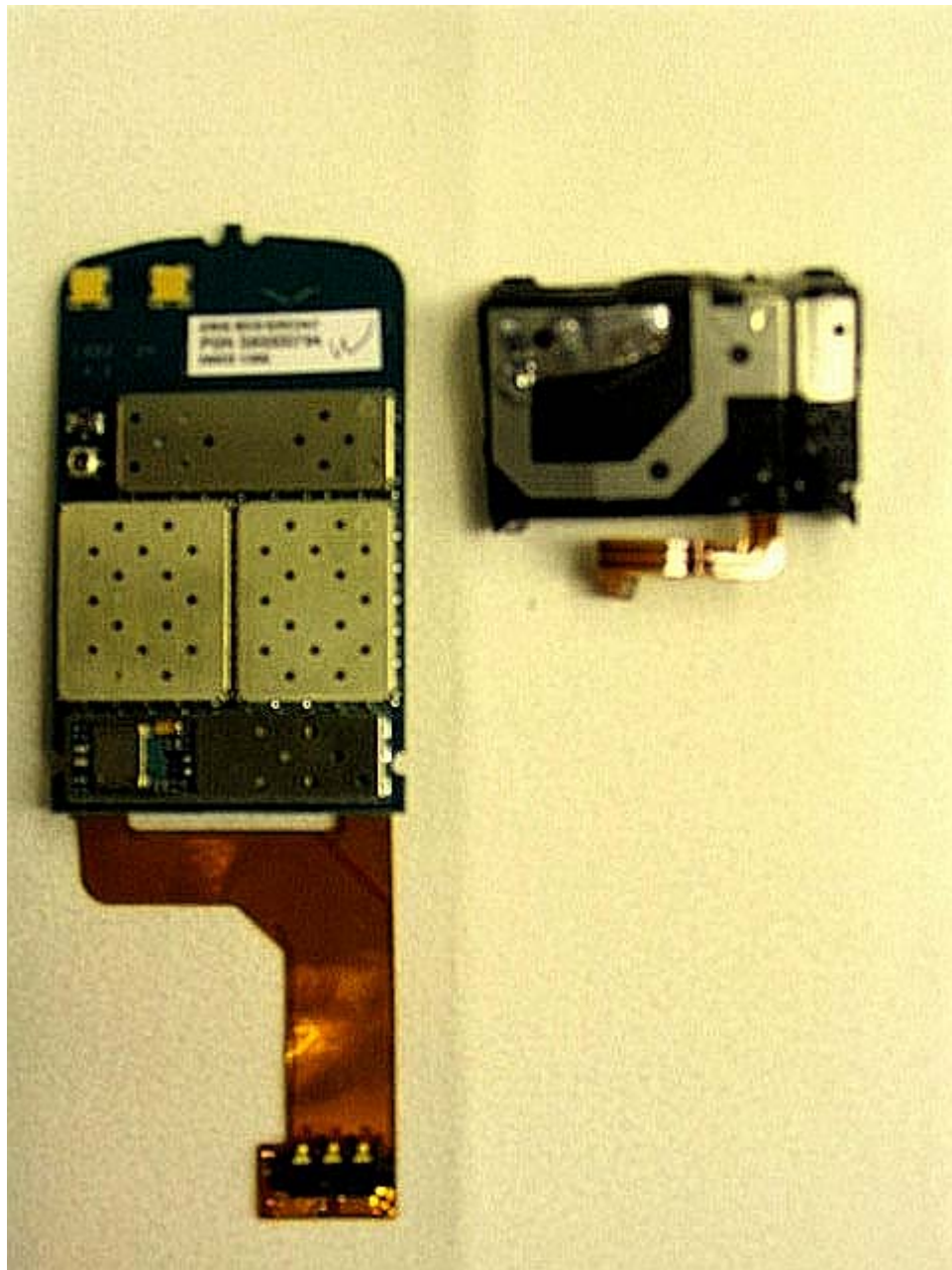


Exhibit 3: INTERNAL VIEW of Vertu FCCID: P7QRHV-1 .

Top View of Printed Wire Board showing RF circuitry, adjacent to associated RF Antenna assembly with printed element .

Note: screening cans (beyond those removed) are placed and soldered as a part of the same process that solders RF components to the pwb and are fixed and not removable !

Photographs of P7QRHV-1 Mobile Phone

AUGUST 2003

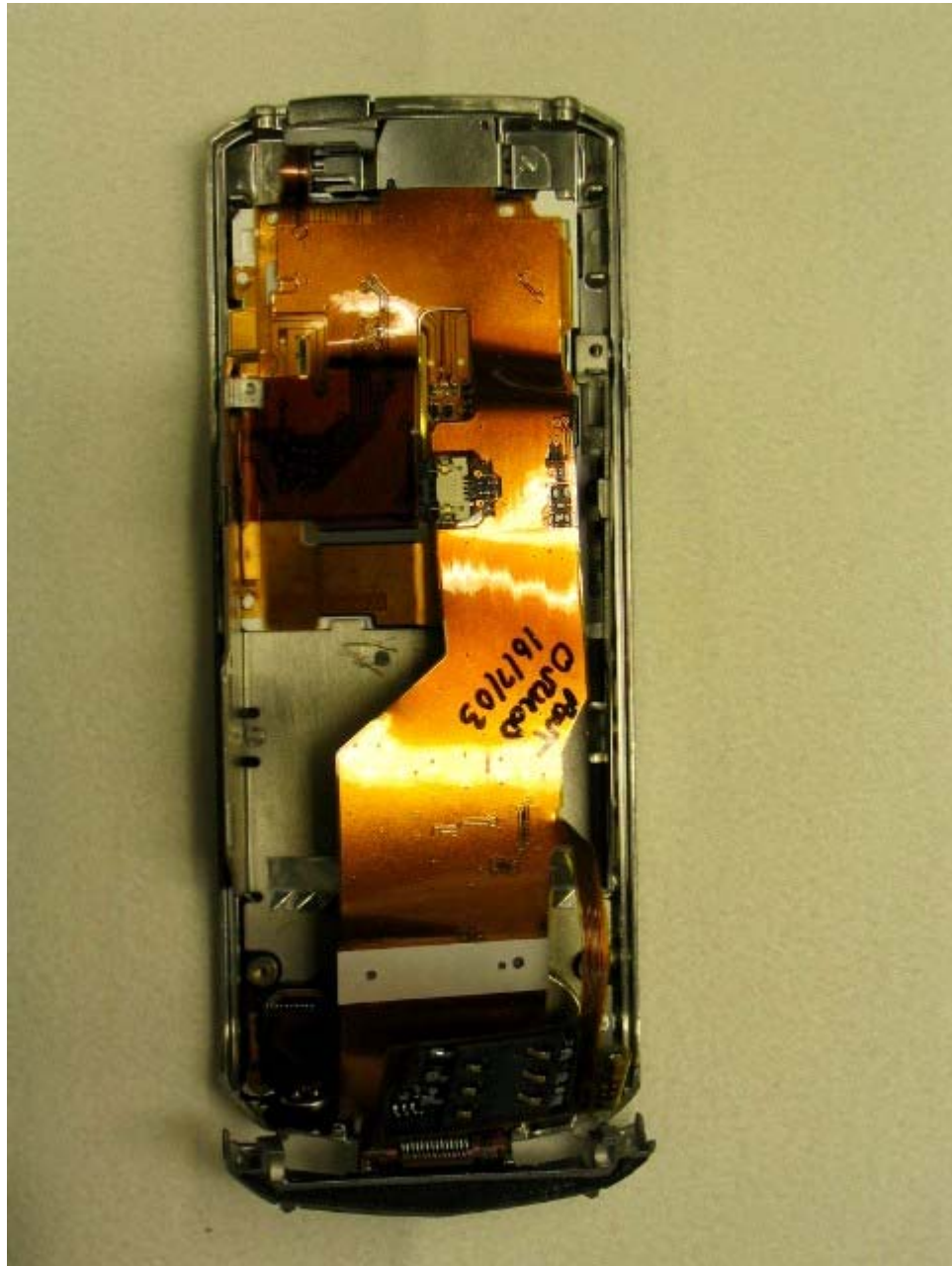


Exhibit 4: INTERNAL VIEW of Vertu FCCID: P7QRHV-1 showing reverse of display module and interconnections.