

## SAR Compliance Test Report

Test report no.:	Not numbered	Date of report:	2002-07-05
Number of pages:	52	Contact person:	Olli Kautio
		Responsible test engineer:	Pertti Mäkikyrö

Testing laboratory:	Nokia Corporation Elektroniikkatie 10 P.O. Box 50 FIN-90571 OULU Finland Tel. +358-7180-08000 Fax. +358-7180-47222	Client:	Vertu Ltd Summit Avenue Farnborough Hamshire GU14 0NG Tel. +44-1252-866000 Fax. +44-1252-866001
---------------------	--	---------	--

Tested devices:	P7QNPM-7 BH2-AL01
-----------------	----------------------

Supplement reports:	-
---------------------	---

Testing has been carried out in accordance with:	IEEE P1528-200X Draft 6.4 Recommended Practice for Determining the Peak Spatial-Average Specific Absorption Rate (SAR) in the Human Body Due to Wireless Communications Devices: Experimental Techniques
--	---

Documentation:	The documentation of the testing performed on the tested devices is archived for 15 years at PC Site Oulu
----------------	---

Test results:	<b>The tested device complies with the requirements in respect of all parameters subject to the test.</b>  The test results and statements relate only to the items tested. The test report shall not be reproduced except in full, without written approval of the laboratory.
---------------	---

Date and signatures: 2002-07-05

For the contents:



Matti Hänninen  
Process Development Manager



Miia Nurkkala  
Test Engineer

## CONTENTS

1.	SUMMARY FOR SAR TEST REPORT .....	3
1.1	MAXIMUM RESULTS FOUND DURING SAR EVALUATION.....	3
1.1.1	Head Configuration.....	3
1.1.2	Body Worn Configuration.....	3
1.1.3	Measurement Uncertainty .....	3
2.	DESCRIPTION OF TESTED DEVICE .....	4
2.1	PICTURE OF PHONE .....	4
2.2	DESCRIPTION OF THE ANTENNA .....	4
2.3	BATTERY OPTIONS .....	5
2.4	BODY WORN ACCESSORIES .....	5
3.	TEST CONDITIONS .....	5
3.1	AMBIENT CONDITIONS .....	5
3.2	RF CHARACTERISTICS OF THE TEST SITE .....	5
3.3	TEST SIGNAL, FREQUENCIES, AND OUTPUT POWER .....	5
4.	DESCRIPTION OF THE TEST EQUIPMENT.....	6
4.1	SYSTEM ACCURACY VERIFICATION.....	6
4.2	TISSUE SIMULANTS.....	7
4.2.1	Head Tissue Simulant .....	7
4.2.2	Muscle Tissue Simulant.....	7
4.3	PHANTOMS.....	8
4.4	ISOTROPIC E-FIELD PROBE ET3DV6 .....	8
5.	DESCRIPTION OF THE TEST PROCEDURE .....	9
5.1	TEST POSITIONS.....	9
5.1.1	Against Phantom Head .....	9
5.1.2	Body Worn Configuration.....	10
5.2	SCAN PROCEDURES.....	11
5.3	SAR AVERAGING METHODS.....	11
6.	MEASUREMENT UNCERTAINTY .....	12
6.1	DESCRIPTION OF INDIVIDUAL MEASUREMENT UNCERTAINTY .....	12
6.1.1	Assessment Uncertainty.....	12
7.	RESULTS.....	13
7.1	HEAD CONFIGURATION .....	13
7.2	BODY WORN CONFIGURATION .....	13
APPENDIX A: Validation Test Printouts ( 2 pages)		
APPENDIX B: SAR Distribution Printouts (13 pages)		
APPENDIX C: Calibration Certificates ( 21 pages)		

## 1. SUMMARY FOR SAR TEST REPORT

Date of test	2002-06-11 – 2002-06-12
Contact person	Olli Kautio
Test plan referred to	-
FCC ID	P7QNPM-7
SN, HW and SW numbers of tested device	SN:04400/06/178194/2 HW:B5T SW:500.10
Accessories used in testing	Battery BLZ-2, Headset HSV-A
Notes	White Gold covers
Document code	DTX 04760-EN
Responsible test engineer	Pertti Mäkikyrö
Measurement performed by	Miia Nurkkala

### 1.1 Maximum Results Found during SAR Evaluation

The equipment is deemed to fulfil the requirements if the measured values are less than or equal to the limit.

#### 1.1.1 Head Configuration

Ch / f(MHz)	Power	Position	Limit	Measured	Result
661/1880.00	29.1 dBm	tilted	1.6 mW/g	0.77 mW/g	<b>PASSED</b>

#### 1.1.2 Body Worn Configuration

Ch / f(MHz)	Power	Accessory	Limit	Measured	Result
512/1850.20	29.2 dBm	BH2-AL01	1.6 mW/g	0.14 mW/g	<b>PASSED</b>

#### 1.1.3 Measurement Uncertainty

<b>Combined Standard Uncertainty</b>	<b>± 13.6%</b>
<b>Expanded Standard Uncertainty (k=2)</b>	<b>± 27.1%</b>

## 2. DESCRIPTION OF TESTED DEVICE

Device category	Portable device
Exposure environment	Uncontrolled exposure
Unit type	Prototype unit
Case type	Fixed case
[Modes of Operation	GSM1900
Modulation Mode	Gaussian Minimum Shift Keying
Duty Cycle	1/8
Transmitter Frequency Range (MHz)	1850.2 - 1909.8

Outside of USA, transmitter of tested device is capable of operating also in GSM900 and GSM1800 modes, which are not part of this filing.

### 2.1 Picture of Phone



P7QNPM-7 with white gold covers was tested.

### 2.2 Description of the Antenna

Type	Internal integrated antenna with retractable whip	
Dimensions (mm)	Maximum width of internal antenna	41 mm
	Maximum length of internal antenna	25 mm
	Maximum length of whip	65 mm
Location	Inside the back cover, near the top of the device	

## 2.3 Battery Options

There is only one battery option available for tested device, BLZ-2.

## 2.4 Body Worn Accessories

Following body worn accessory is available for P7QNMP-7



- Belt Holster  
BH2-AL01

## 3. TEST CONDITIONS

### 3.1 Ambient Conditions

Ambient temperature (°C)	22±1
Tissue simulating liquid temperature (°C)	22±1
Humidity (%)	45

### 3.2 RF characteristics of the test site

Tests were performed in a fully enclosed RF shielded environment.

### 3.3 Test Signal, Frequencies, and Output Power

The device was controlled by using a radio tester. Communication between the device and the tester was established by air link.

Measurements were performed at the middle channel only in head configuration, because each test configuration in that channel was more than 3.0dB lower than the SAR limit.

The phone was set to maximum power level during the all tests and at the beginning of the each test the battery was fully charged.

DASY3 system measures power drift during SAR testing by comparing e-field in the same location at the beginning and at the end of measurement. These records were used to monitor stability of power output.

#### 4. DESCRIPTION OF THE TEST EQUIPMENT

The measurements were performed with an automated near-field scanning system, DASY3, manufactured by Schmid & Partner Engineering AG (SPEAG) in Switzerland.

Test Equipment	Serial Number	Due Date
DASY3 DAE V1	371	10/02
E-field Probe ET3DV6	1381	10/02
Dipole Validation Kit, D1900V2	511	02/03

E-field probe calibration records are presented in Appendix C.

Additional equipment needed in validation

Test Equipment	Model	Serial Number	Due Date
Signal Generator	R&S SMIQ06B	100168	04/03
Amplifier	Amplifier Research 5S1G4	27573	-
Power Meter	R&S NRT	835065/049	04/03
Power Sensor	R&S NRT-Z44	835374/021	04/03
Thermometer	DO9416	1505985462	-
Vector Network Analyzer	Hewlett Packard 8753E	US38432701	05/03
Dielectric Probe Kit	Agilent 85070C	-	-

#### 4.1 System Accuracy Verification

The probes are calibrated annually by the manufacturer. Dielectric parameters of the simulating liquids are measured by using a dielectric probe kit and a vector network analyzer.

The SAR measurement of the DUT were done within 24 hours of system accuracy verification, which was done using the dipole validation kit.

The dipole antenna, which is manufactured by Schmid & Partner Engineering AG, is matched to be used near flat phantom filled with tissue simulating solution. Dipole length for 1900 MHz is 68 mm with overall height of 300mm. A specific distance holder is used in the positioning of the antenna to ensure correct spacing between the phantom and the dipole. Manufacturer's reference dipole data is presented in Appendix C.

Power level of 250 mW was supplied to the antenna placed under the flat section of SAM phantom. The validation results are in the table below and printout of the validation test is presented in Appendix A. All the measured parameters were within the specification.

Tissue	$f$ (MHz)	Description	SAR (W/kg), 1g	Dielectric Parameters		Temp (°C)
				$\epsilon_r$	$\sigma$ (S/m)	
Head	1900	Measured 06/11/02	11.4	38.4	1.46	22.0
		Reference Result	10.7	39.2	1.47	N/A
Muscle	1900	Measured 06/12/02	11.2	52.7	1.52	22.7
		Reference Result	10.6	53.5	1.46	N/A

## 4.2 Tissue Simulants

All dielectric parameters of tissue simulants were measured within 24 hours of SAR measurements. The depth of the tissue simulant in the ear reference point of the phantom was  $15\text{cm} \pm 5\text{mm}$  during all the tests. Volume for each tissue simulant was 26 liters.

### 4.2.1 Head Tissue Simulant

The composition of the brain tissue simulating liquid for is 1900MHz

44.91% 2-(2-butoxyethoxy) Ethanol  
54.88% De-Ionized Water  
0.21% Salt

$f$ (MHz)	Description	Dielectric Parameters		Temp (°C)
		$\epsilon_r$	$\sigma$ (S/m)	
1880	Measured 06/11/02	38.5	1.44	22
	Recommended Values	40.0	1.40	20-26

Recommended values are adopted from OET Bulletin 65 (97-01) Supplement C (01-01).

### 4.2.2 Muscle Tissue Simulant

The composition of the muscle tissue simulating liquid for 1900MHz is

69.02% De-Ionized Water  
30.76% Diethylene Glycol Monobutyl Ether  
0.22% Salt

$f$ (MHz)	Description	Dielectric Parameters		Temp (°C)
		$\epsilon_r$	$\sigma$ (S/m)	
1880	Measured 06/12/02	52.8	1.50	22
	Recommended Values	53.3	1.52	20-26

Recommended values are adopted from OET Bulletin 65 (97-01) Supplement C (01-01).

### 4.3 Phantoms

"SAM v4.0" phantom", manufactured by SPEAG, was used during the measurement. It has fiberglass shell integrated in a wooden table. The shape of the shell corresponds to the phantom defined by SCC34-SC2. It enables the dosimetric evaluation of left and right hand phone usage as well as body mounted usage at the flat phantom region. Reference



markings on the phantom allow the complete setup of all predefined phantom positions and measurement grids by manually teaching three points in the robot.

The thickness of phantom shell is 2 mm except for the ear, where an integrated ear spacer provides a 6 mm spacing from the tissue boundary. Manufacturer reports tolerance in shell thickness to be  $\pm 0.1\text{mm}$ .

### 4.4 Isotropic E-Field Probe ET3DV6

<b>Construction</b>	Symmetrical design with triangular core Built-in optical fiber for surface detection system Built-in shielding against static charges PEEK enclosure material (resistant to organic solvents, e.g., glycolether)
<b>Calibration</b>	Calibration certificate in Appendix C
<b>Frequency</b>	10 MHz to 3 GHz (dosimetry); Linearity: $\pm 0.2$ dB (30 MHz to 3 GHz)
<b>Optical Surface Detection</b>	$\pm 0.2$ mm repeatability in air and clear liquids over diffuse reflecting surfaces
<b>Directivity</b>	$\pm 0.2$ dB in HSL (rotation around probe axis) $\pm 0.4$ dB in HSL (rotation normal to probe axis)
<b>Dynamic Range</b>	5 $\mu\text{W/g}$ to > 100 mW/g; Linearity: $\pm 0.2$ dB
<b>Dimensions</b>	Overall length: 330 mm Tip length: 16 mm Body diameter: 12 mm Tip diameter: 6.8 mm Distance from probe tip to dipole centers: 2.7 mm
<b>Application</b>	General dosimetry up to 3 GHz Compliance tests of mobile phones Fast automatic scanning in arbitrary phantoms



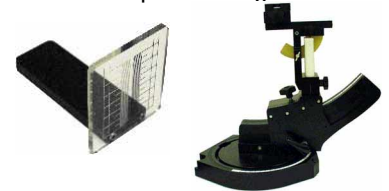


## 5. DESCRIPTION OF THE TEST PROCEDURE

### 5.1 Test Positions

The device was placed in holder using a special positioning tool, which aligns the bottom of the device with holder and ensures that holder contacts only to the sides of the device. After positioning is done, tool is removed. This method provides standard positioning and separation, and also ensures free space for antenna.

Device holder was provided by SPEAG together with DASY3.



#### 5.1.1 Against Phantom Head

Measurements were made on both the "left hand" and "right hand" side of the phantom.

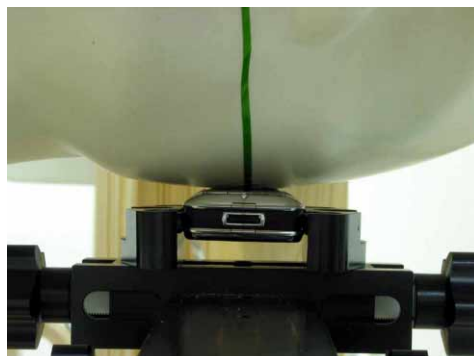
The device was positioned against phantom according to OET Bulletin 65 (97-01) Supplement C (01-01) . Definitions of terms used in aligning the device to a head phantom are available in IEEE Draft Standard P1528-2001 "Recommended Practice for Determining the Spatial-Peak Specific Absorption Rate (SAR) in the Human Body Due to Wireless Communications Devices: Experimental Techniques"

##### 5.1.1.1 Initial Ear Position

The device was initially positioned with the earpiece region pressed against the ear spacer of a head phantom parallel to the "Neck-Front" line defined along the base of the ear spacer that contains the "ear reference point". The "test device reference point" is aligned to the "ear reference point" on the head phantom and the "vertical centerline" is aligned to the "phantom reference plane".

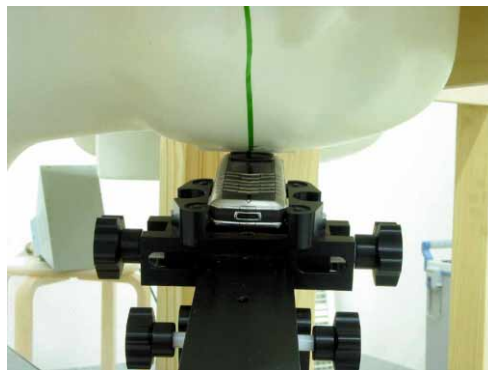
##### 5.1.1.2 Cheek Position

"Initial ear position" alignments are maintained and the device is brought toward the mouth of the head phantom by pivoting along the "Neck-Front" line until any point on the display, keypad or mouthpiece portions of the handset is in contact with the phantom or when any portion of a foldout, sliding or similar keypad cover opened to its intended self-adjusting normal use position is in contact with the cheek or mouth of the phantom.



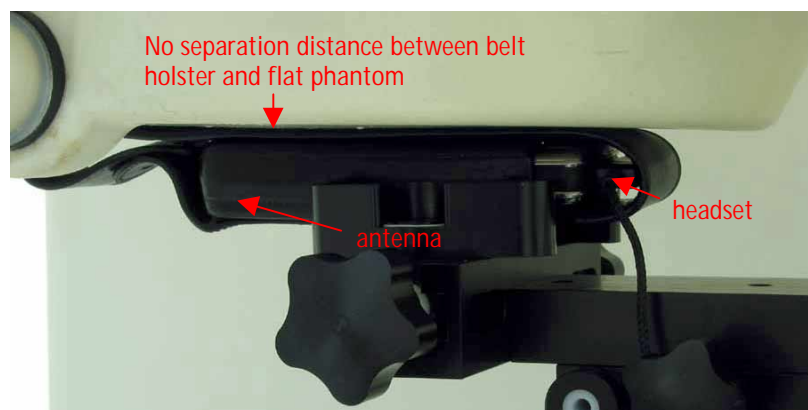
### 5.1.1.3 Tilt Position

In the "Cheek Position", if the earpiece of the device is not in full contact with the phantom's ear spacer and the peak SAR location for the "cheek position" is located at the ear spacer region or corresponds to the earpiece region of the handset, the device is returned to the "initial ear position" by rotating it away from the mouth until the earpiece is in full contact with the ear spacer. Otherwise, the device is moved away from the cheek perpendicular to the line passes through both "ear reference points" for approximate 2-3 cm. While it is in this position, the device is tilted away from the mouth with respect to the "test device reference point" by 15°. After the tilt, it is then moved back toward the head perpendicular to the line passes through both "ear reference points" until the device touches the phantom or the ear spacer. If the antenna touches the head first, the positioning process is repeated with a tilt angle less than 15° so that the device and its antenna would touch the phantom simultaneously.



### 5.1.2 Body Worn Configuration

Body worn accessory BH2-AL01 was tested for the FCC RF exposure compliance. The phone was positioned into belt holster and placed below the flat phantom. Headset HSV-A was connected during measurements. BH2-AL01 is designed so that headset can be connected only if the antenna of the DUT is facing away from the phantom. Whip antenna can not be extended. Backside of the belt holster is in touch with the phantom.



## 5.2 Scan Procedures

First coarse scans are used for quick determination of the field distribution. Next a cube scan, 5x5x7 points; spacing between each point 8x8x5 mm, is performed around the highest E-field value to determine the averaged SAR-distribution over 1g.

## 5.3 SAR Averaging Methods

The maximum SAR value is averaged over its volume using interpolation and extrapolation.

The interpolation of the points is done with a 3d-Spline. The 3d-Spline is composed of three one-dimensional splines with the "Not a knot" -condition [W. Gander, Computermathematik, p. 141-150] (x, y and z -directions) [Numerical Recipes in C, Second Edition, p 123].

The extrapolation is based on least square algorithm [W. Gander, Computermathematik, p.168-180]. Through the points in the first 30 mm in all z-axis, polynomials of order four are calculated. This polynomial is then used to evaluate the points between the surface and the probe tip. The points, calculated from the surface, have a distance of 1mm from one another.

## 6. MEASUREMENT UNCERTAINTY

### 6.1 Description of Individual Measurement Uncertainty

#### 6.1.1 Assessment Uncertainty

Uncertainty description	Uncert. value %	Probability distribution	Div.	$c_i^{-1}$	Stand. uncert (1g) %	$v_i^2$ or $v_{eff}$
<b>Measurement System</b>						
Probe calibration	$\pm 4.4$	normal	1	1	$\pm 4.4$	$\infty$
Axial isotropy of the probe	$\pm 4.7$	rectangular	$\sqrt{3}$	$(1-c_p)^{1/2}$	$\pm 1.9$	$\infty$
Sph. Isotropy of the probe	$\pm 9.6$	rectangular	$\sqrt{3}$	$(c_p)^{1/2}$	$\pm 3.9$	$\infty$
Spatial resolution	$\pm 0.0$	rectangular	$\sqrt{3}$	1	$\pm 0.0$	$\infty$
Boundary effects	$\pm 5.5$	rectangular	$\sqrt{3}$	1	$\pm 3.2$	$\infty$
Probe linearity	$\pm 4.7$	rectangular	$\sqrt{3}$	1	$\pm 2.7$	$\infty$
Detection limit	$\pm 1.0$	rectangular	$\sqrt{3}$	1	$\pm 0.6$	$\infty$
Readout electronics	$\pm 1.0$	normal	1	1	$\pm 1.0$	$\infty$
Response time	$\pm 0.8$	rectangular	$\sqrt{3}$	1	$\pm 0.5$	$\infty$
Integration time	$\pm 1.4$	rectangular	$\sqrt{3}$	1	$\pm 0.8$	$\infty$
RF ambient conditions	$\pm 3.0$	rectangular	$\sqrt{3}$	1	$\pm 1.7$	$\infty$
Mech. constrains of robot	$\pm 0.4$	rectangular	$\sqrt{3}$	1	$\pm 0.2$	$\infty$
Probe positioning	$\pm 2.9$	rectangular	$\sqrt{3}$	1	$\pm 1.7$	$\infty$
Extrap. and integration	$\pm 3.9$	rectangular	$\sqrt{3}$	1	$\pm 2.3$	$\infty$
<b>Test Sample Related</b>						
Device positioning	$\pm 6.0$	normal	0.89	1	$\pm 6.7$	12
Device holder uncertainty	$\pm 5.0$	normal	0.84	1	$\pm 5.9$	8
Power drift	$\pm 5.0$	rectangular	$\sqrt{3}$	1	$\pm 2.9$	$\infty$
<b>Phantom and Setup</b>						
Phantom uncertainty	$\pm 4.0$	rectangular	$\sqrt{3}$	1	$\pm 2.3$	$\infty$
Liquid conductivity (target)	$\pm 5.0$	rectangular	$\sqrt{3}$	0.6	$\pm 1.7$	$\infty$
Liquid conductivity (meas.)	$\pm 10.0$	rectangular	$\sqrt{3}$	0.6	$\pm 3.5$	$\infty$
Liquid permittivity (target)	$\pm 5.0$	rectangular	$\sqrt{3}$	0.6	$\pm 1.7$	$\infty$
Liquid permittivity (meas.)	$\pm 5.0$	rectangular	$\sqrt{3}$	0.6	$\pm 1.7$	$\infty$
<b>Combined Standard Uncertainty</b>					$\pm 13.6$	
<b>Expanded Standard Uncertainty (k=2)</b>					$\pm 27.1$	

## 7. RESULTS

All SAR distribution printouts are shown in Appendix B. It also includes one Z-plot of head and one Z-plot of body worn configuration.

### 7.1 Head Configuration

Mode	Channel/ <i>f</i> (MHz)	Power (dBm)	Whip In/Out	SAR, averaged over 1g (mW/g)			
				Left-hand		Right-hand	
				Cheek	Tilted	Cheek	Tilted
	661/1880.00	29.1	In	0.29	0.40	0.25	0.36
			Out	0.27	0.77	0.22	0.57

### 7.2 Body Worn Configuration

Mode	Channel/ <i>f</i> (MHz)	Power (dBm)	SAR, averaged over 1g (mW/g)
			BH2-AL01
GSM 1900	512/1850.20	29.2	0.14
	661/1880.00	29.1	0.10
	810/1909.80	29.0	0.07

**APPENDIX A.**

**Validation Test Printouts**

# Dipole 1900 MHz

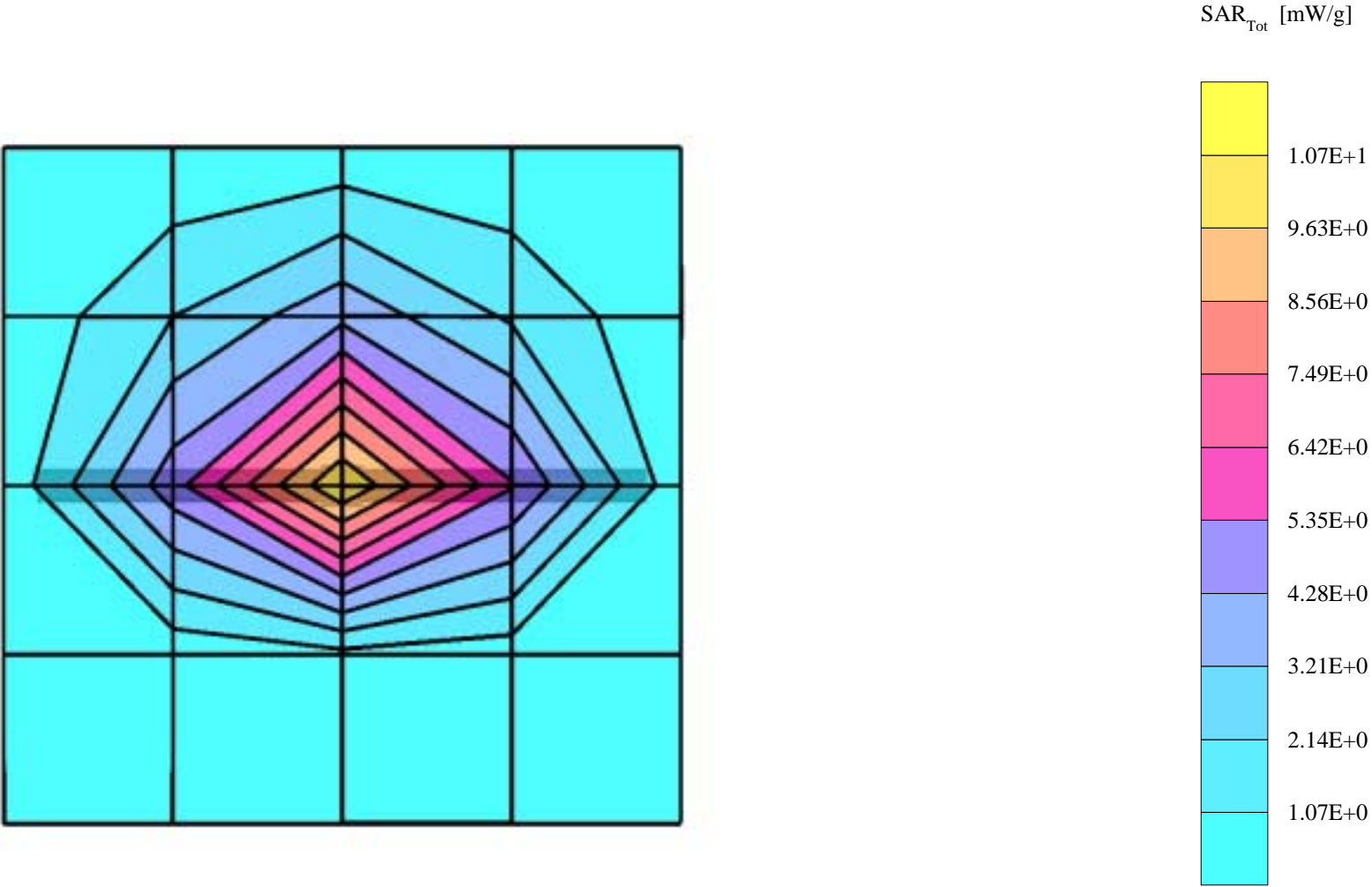
SAM 2; Flat

Probe: ET3DV6 - SN1381; ConvF(5.22,5.22,5.22); Crest factor: 1.0; Brain 1900 MHz SCC34:  $\sigma = 1.46 \text{ mho/m}$   $\epsilon = 38.4$   $\rho = 1.00 \text{ g/cm}^3$ , liquid temperature 22.0 C

Cubes (2): SAR (1g):  $11.4 \text{ mW/g} \pm 0.00 \text{ dB}$ , SAR (10g):  $5.79 \text{ mW/g} \pm 0.03 \text{ dB}$

Coarse: Dx = 20.0, Dy = 20.0, Dz = 10.0

Powerdrift: -0.02 dB



# Dipole 1900 MHz

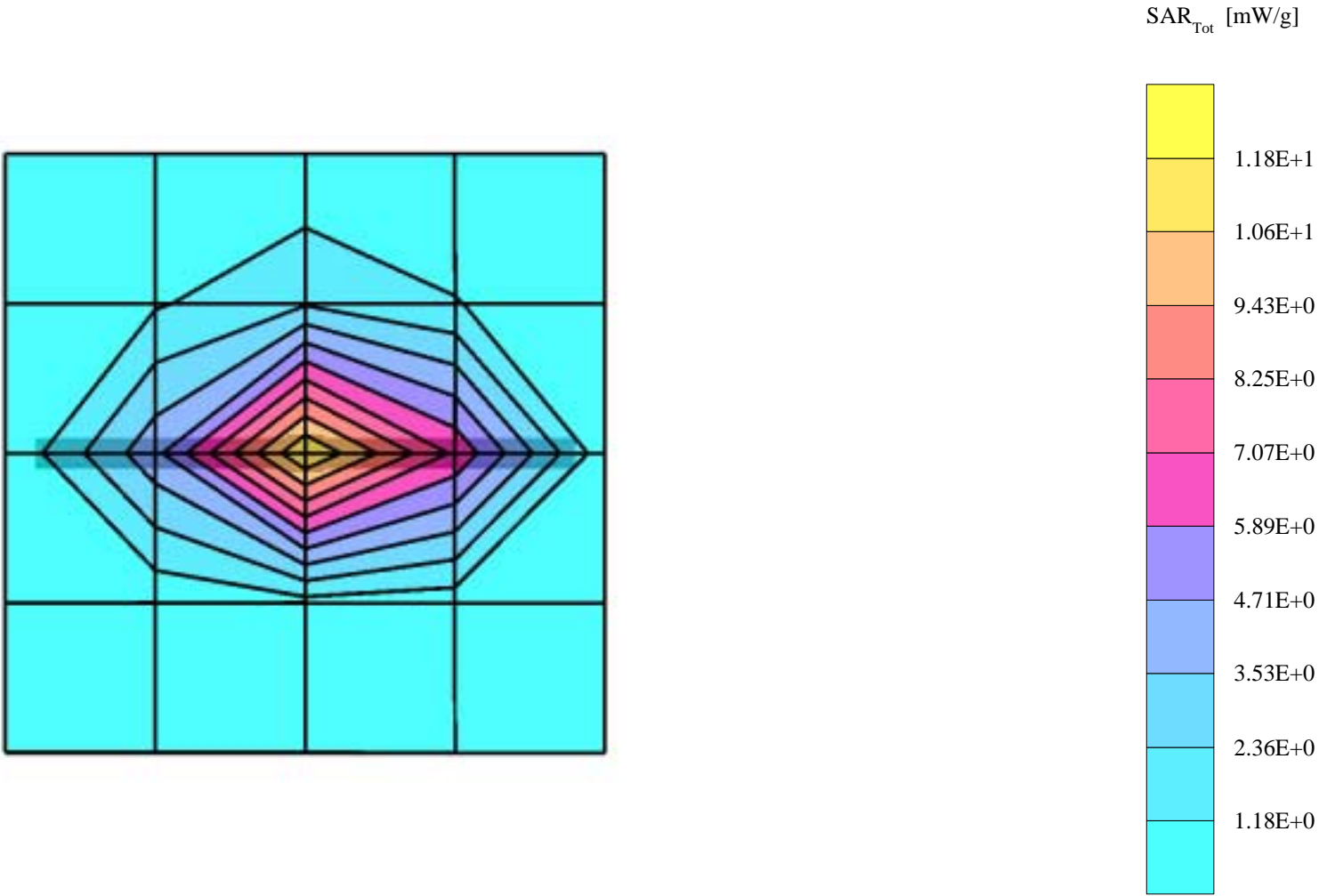
SAM 1; Flat

Probe: ET3DV6 - SN1381; ConvF(4.96,4.96,4.96); Crest factor: 1.0; Muscle 1900 MHz:  $\sigma = 1.52 \text{ mho/m}$   $\epsilon = 52.7$   $\rho = 1.00 \text{ g/cm}^3$ , liquid temperature 22.7 C

Cubes (2): SAR (1g): 11.2 mW/g  $\pm 0.01 \text{ dB}$ , SAR (10g): 5.76 mW/g  $\pm 0.02 \text{ dB}$

Coarse: Dx = 20.0, Dy = 20.0, Dz = 10.0

Powerdrift: 0.02 dB





**APPENDIX B.**

**SAR Distribution Printouts**

P7QNPM-7, white gold cover

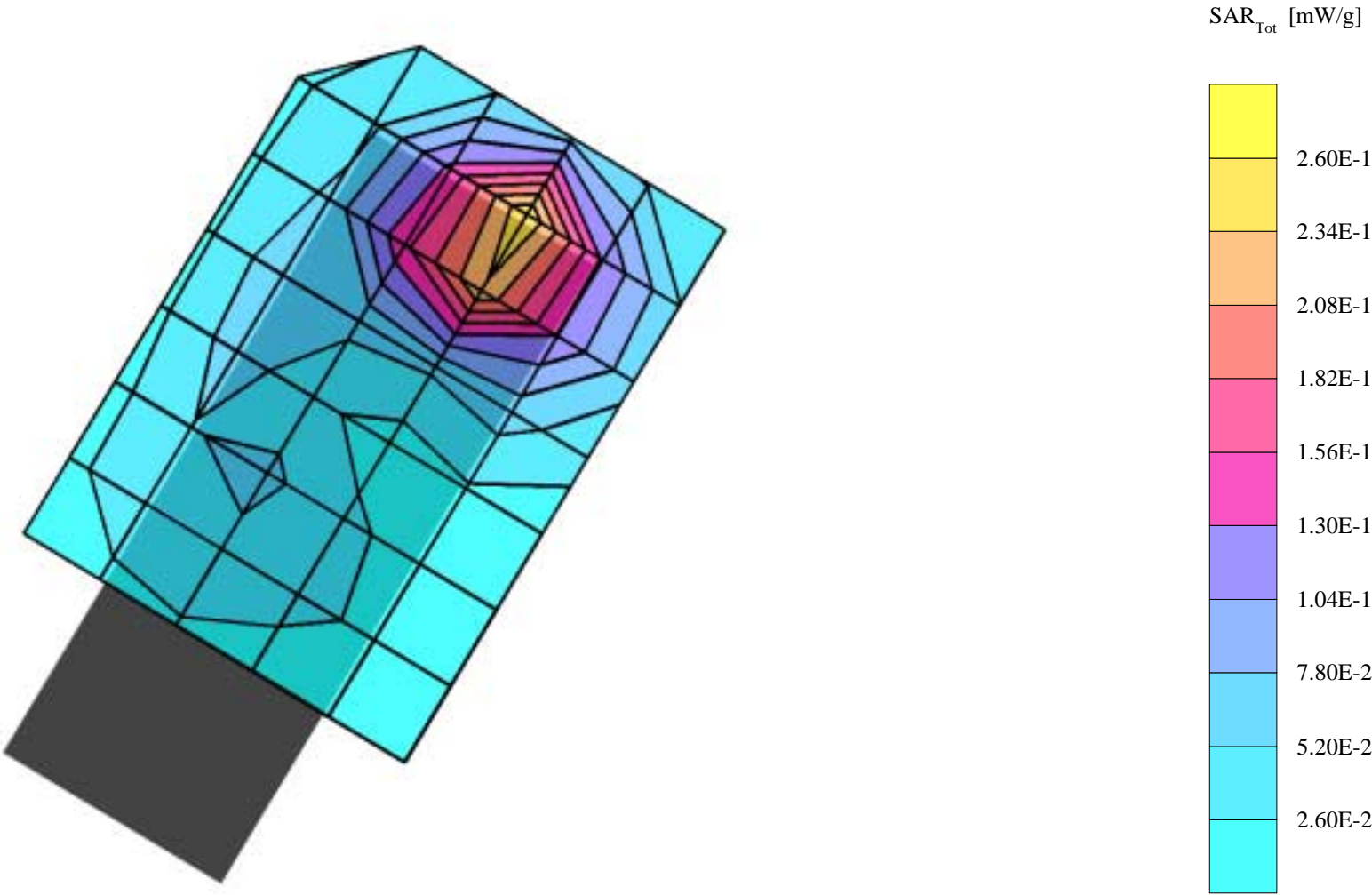
SAM 2 Phantom; Left Hand Section; Position: cheek; Frequency: 1880 MHz

Probe: ET3DV6 - SN1381; ConvF(5.22,5.22,5.22); Crest factor: 8.0; Brain 1880 MHz SCC34:  $\sigma = 1.44 \text{ mho/m}$   $\epsilon = 38.5$   $\rho = 1.00 \text{ g/cm}^3$ , liquid temperature 22.5 C

Cube 5x5x7: SAR (1g): 0.289 mW/g, SAR (10g): 0.147 mW/g

Coarse: Dx = 15.0, Dy = 15.0, Dz = 10.0

Powerdrift: -0.10 dB



# P7QNPM-7, white gold cover

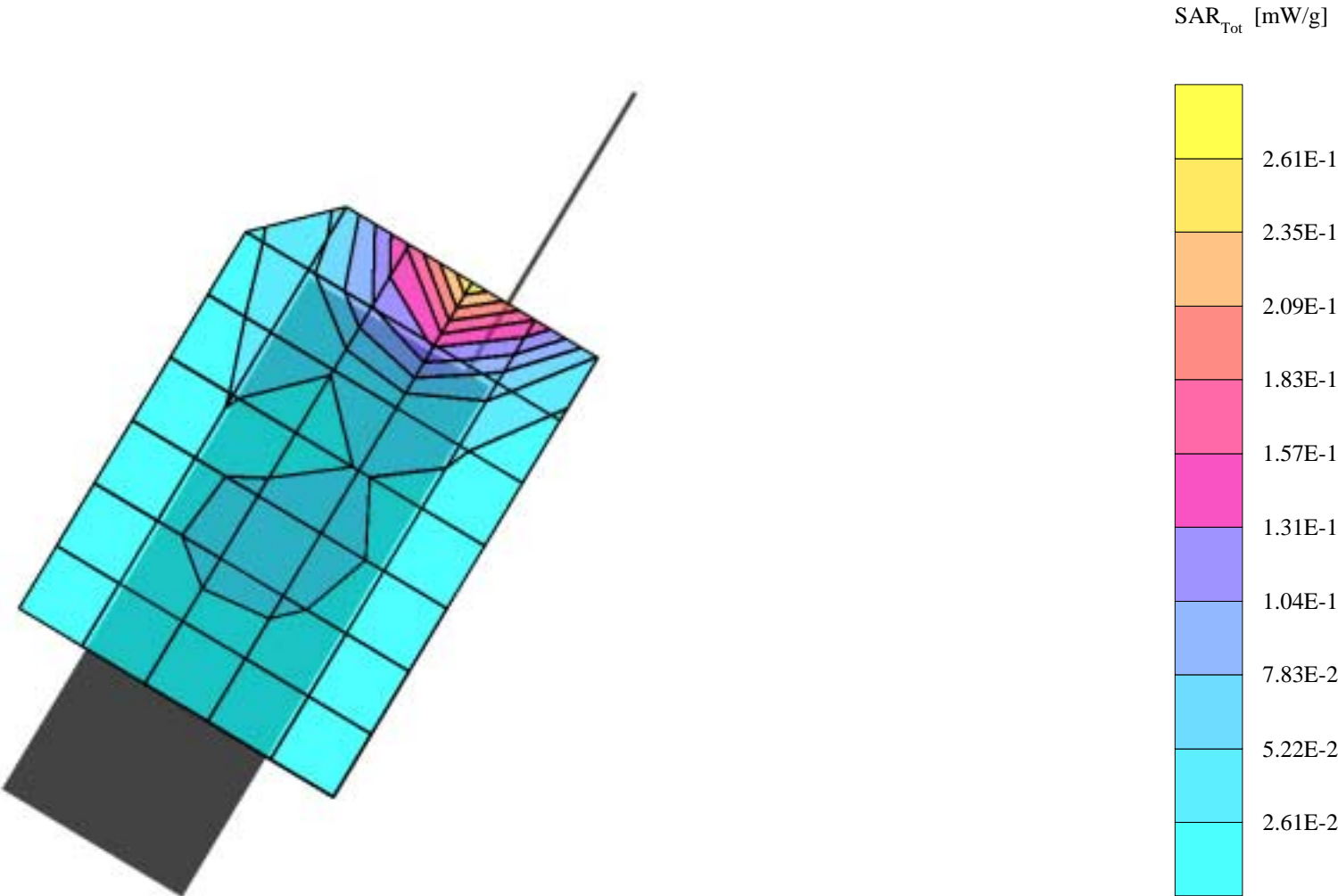
SAM 2 Phantom; Left Hand Section; Position: cheek; Frequency: 1880 MHz

Probe: ET3DV6 - SN1381; ConvF(5.22,5.22,5.22); Crest factor: 8.0; Brain 1880 MHz SCC34:  $\sigma = 1.44 \text{ mho/m}$   $\epsilon = 38.5$   $\rho = 1.00 \text{ g/cm}^3$ , liquid temperature 22.5

Cube 5x5x7: SAR (1g): 0.269 mW/g, SAR (10g): 0.159 mW/g

Coarse: Dx = 15.0, Dy = 15.0, Dz = 10.0

Powerdrift: -0.13 dB



P7QNPM-7, white gold cover

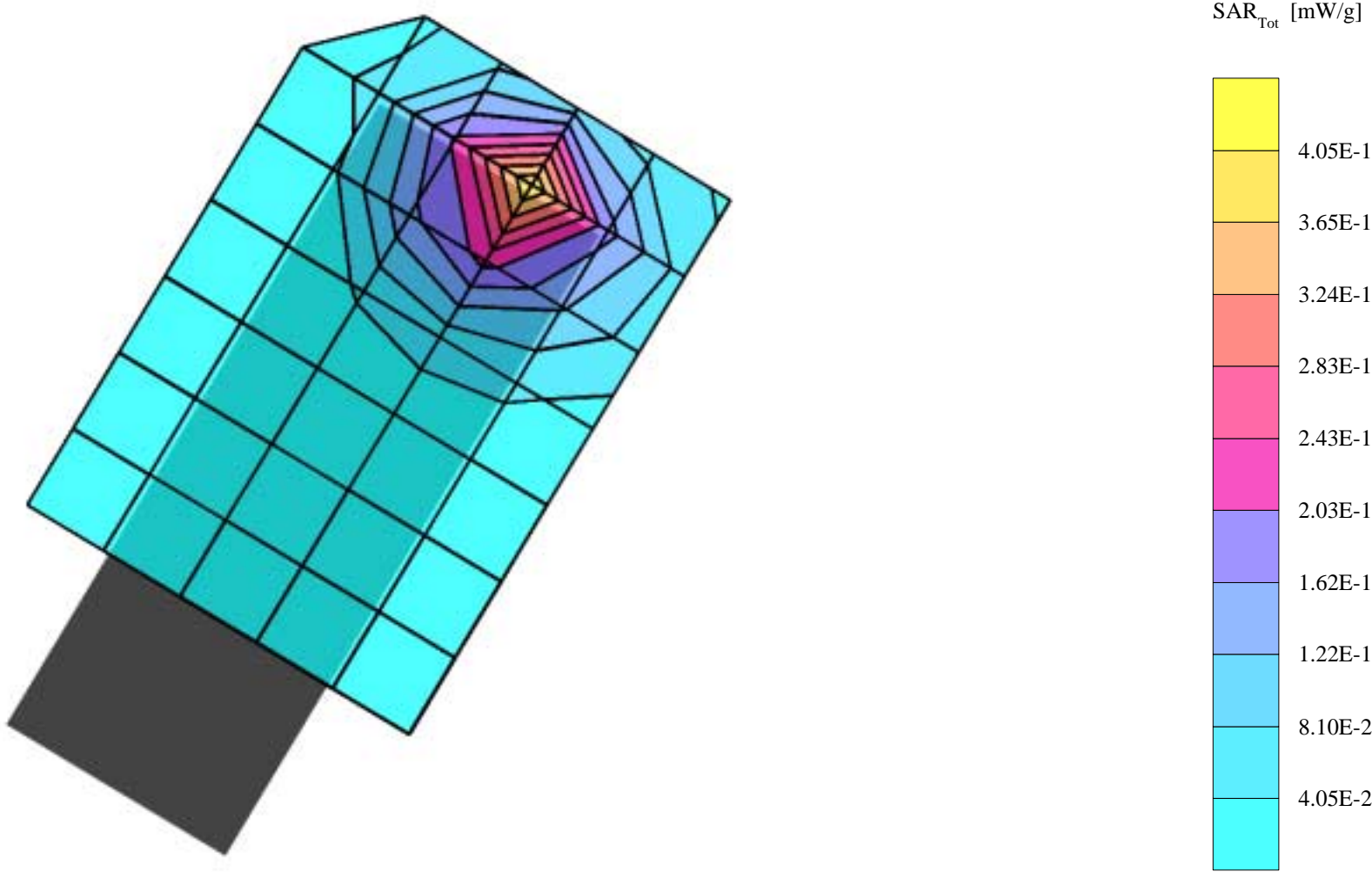
SAM 2 Phantom; Left Hand Section; Position: tilted; Frequency: 1880 MHz

Probe: ET3DV6 - SN1381; ConvF(5.22,5.22,5.22); Crest factor: 8.0; Brain 1880 MHz SCC34:  $\sigma = 1.44 \text{ mho/m}$   $\epsilon = 38.5$   $\rho = 1.00 \text{ g/cm}^3$ , liquid temperature 22.5 C

Cube 5x5x7: SAR (1g): 0.397 mW/g, SAR (10g): 0.196 mW/g

Coarse: Dx = 15.0, Dy = 15.0, Dz = 10.0

Powerdrift: -0.02 dB



# P7QNPM-7, white gold cover

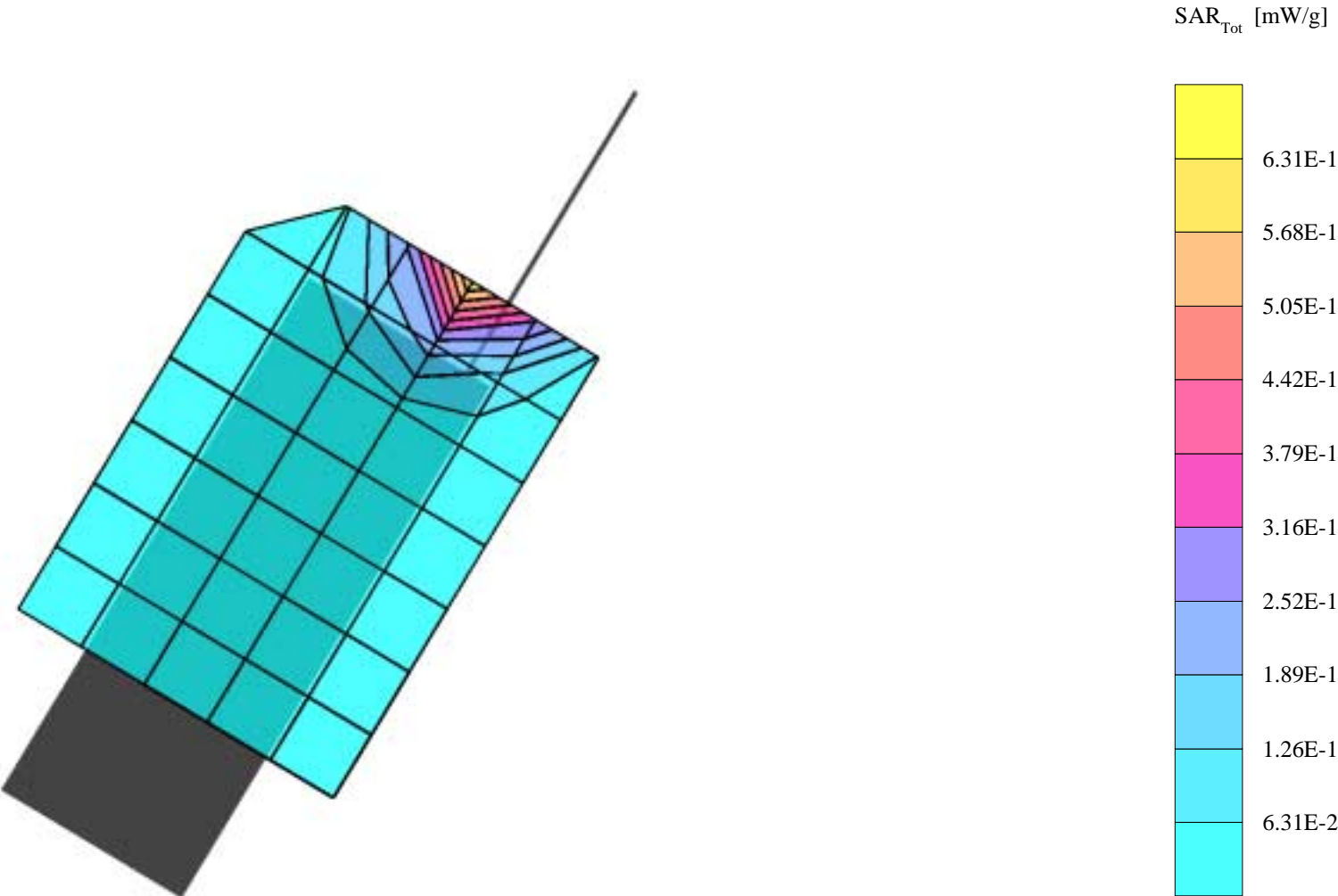
SAM 2 Phantom; Left Hand Section; Position: tilted; Frequency: 1880 MHz

Probe: ET3DV6 - SN1381; ConvF(5.22,5.22,5.22); Crest factor: 8.0; Brain 1880 MHz SCC34:  $\sigma = 1.44 \text{ mho/m}$   $\epsilon = 38.5$   $\rho = 1.00 \text{ g/cm}^3$ , liquid temperature 22.4 C

Cube 5x5x7: SAR (1g): 0.768 mW/g , SAR (10g): 0.400 mW/g

Coarse: Dx = 15.0, Dy = 15.0, Dz = 10.0

Powerdrift: 0.08 dB



P7QNPM-7, white gold cover

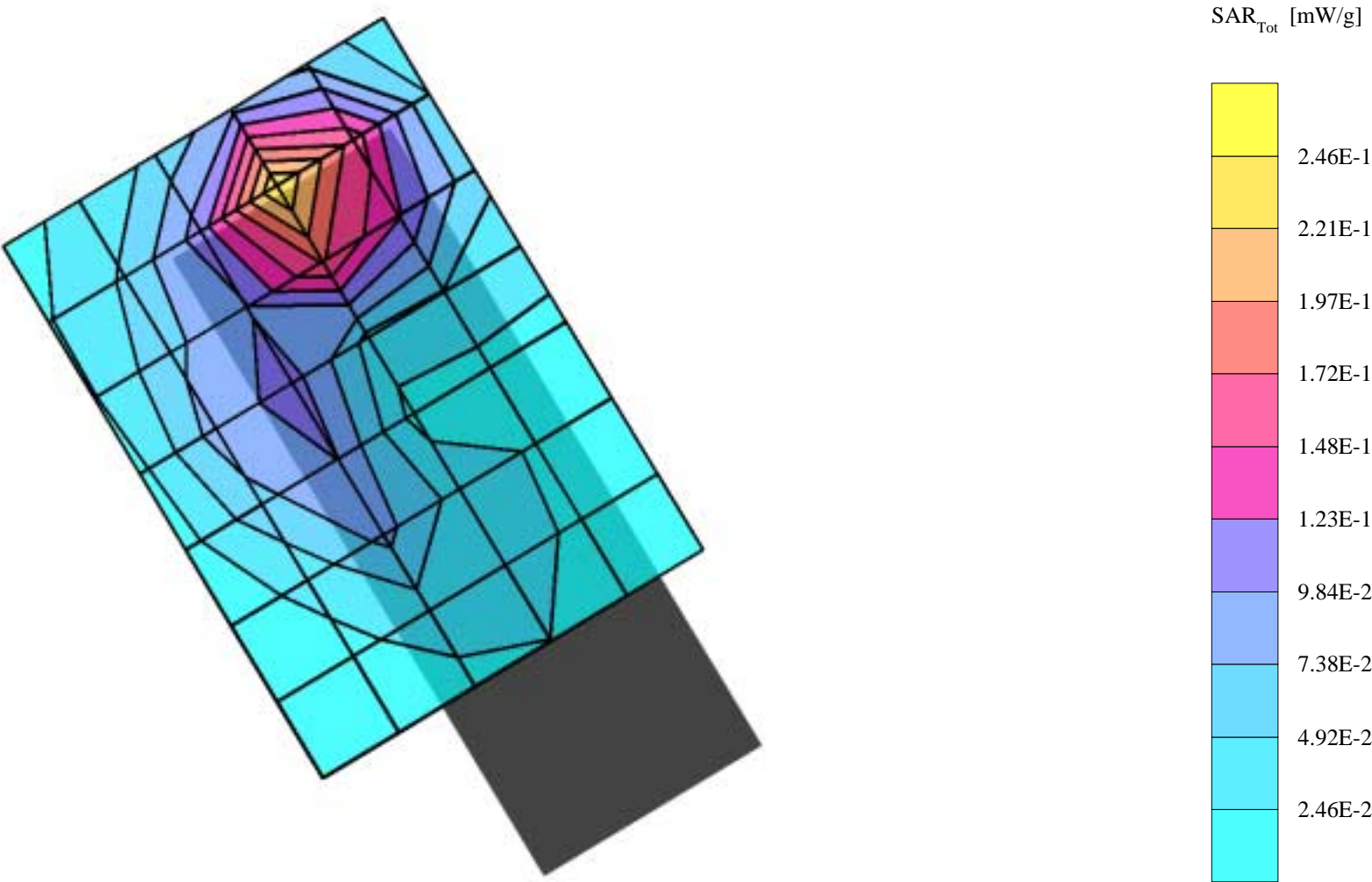
SAM 2 Phantom; Righ Hand Section; Position: cheek;Frequency: 1880 MHz

Probe: ET3DV6 - SN1381; ConvF(5.22,5.22,5.22); Crest factor: 8.0; Brain 1880 MHz SCC34:  $\sigma = 1.44$  mho/m  $\epsilon = 38.5$   $\rho = 1.00$  g/cm<sup>3</sup>, liquid temperature 22.4 C

Cube 5x5x7: SAR (1g): 0.247 mW/g, SAR (10g): 0.133 mW/g

Coarse: Dx = 15.0, Dy = 15.0, Dz = 10.0

Powerdrift: 0.26 dB



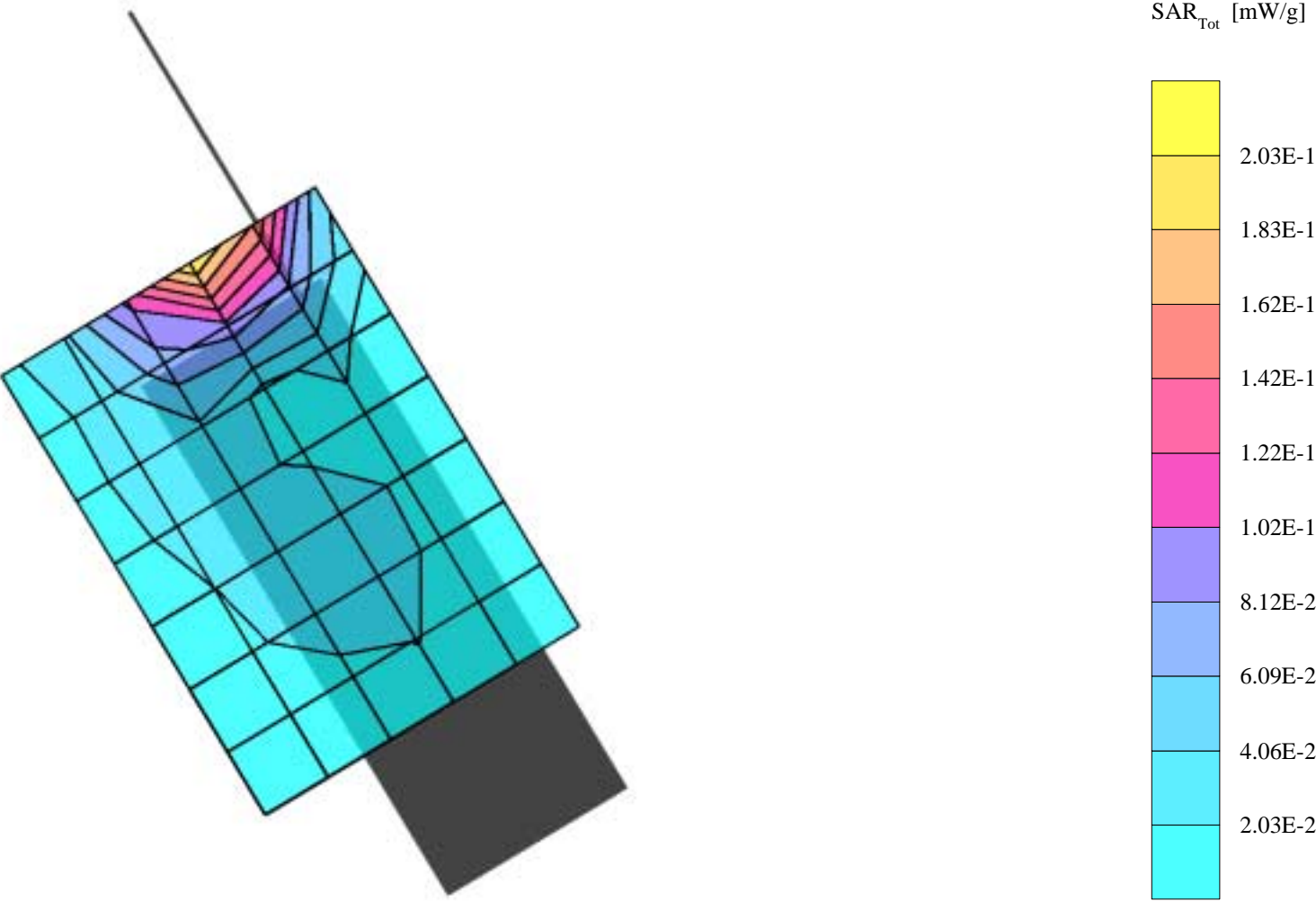
P7QNPM-7, white gold cover

SAM 2 Phantom; Righ Hand Section; Position: cheek; Frequency: 1880 MHz

Probe: ET3DV6 - SN1381; ConvF(5.22,5.22,5.22); Crest factor: 8.0; Brain 1880 MHz SCC34:  $\sigma = 1.44 \text{ mho/m}$   $\epsilon = 38.5$   $\rho = 1.00 \text{ g/cm}^3$ , liquid temperature 22.4 C

Cube 5x5x7: SAR (1g): 0.221 mW/g, SAR (10g): 0.135 mW/g

Coarse: Dx = 15.0, Dy = 15.0, Dz = 10.0





P7QNPM-7, white gold cover

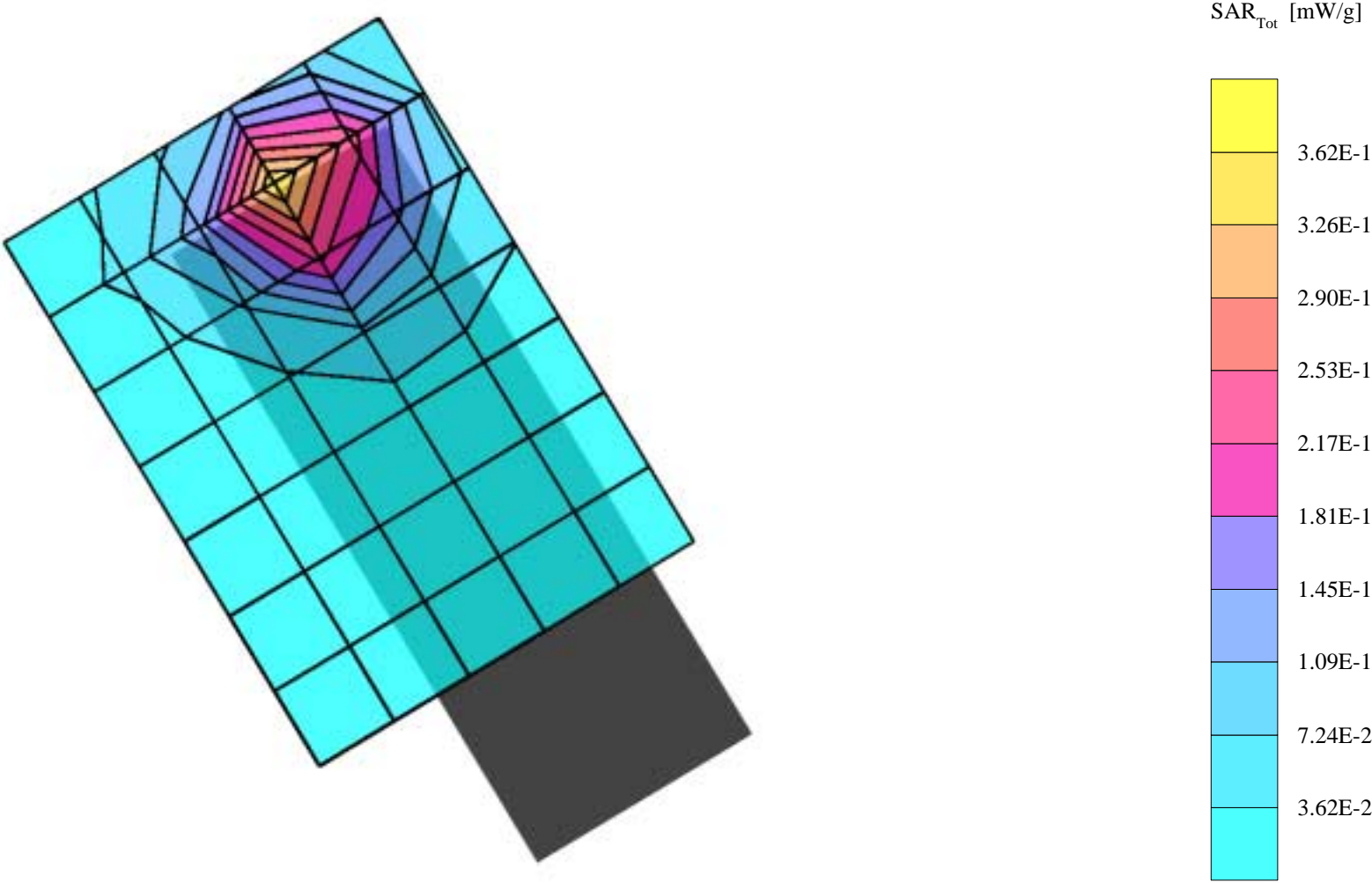
SAM 2 Phantom; Righ Hand Section; Position: tilted; Frequency: 1880 MHz

Probe: ET3DV6 - SN1381; ConvF(5.22,5.22,5.22); Crest factor: 8.0; Brain 1880 MHz SCC34:  $\sigma = 1.44 \text{ mho/m}$   $\epsilon = 38.5$   $\rho = 1.00 \text{ g/cm}^3$ , liquid temperature 22.3 C

Cube 5x5x7: SAR (1g): 0.358 mW/g, SAR (10g): 0.185 mW/g

Coarse: Dx = 15.0, Dy = 15.0, Dz = 10.0

Powerdrift: 0.12 dB





P7QNPM-7, white gold cover

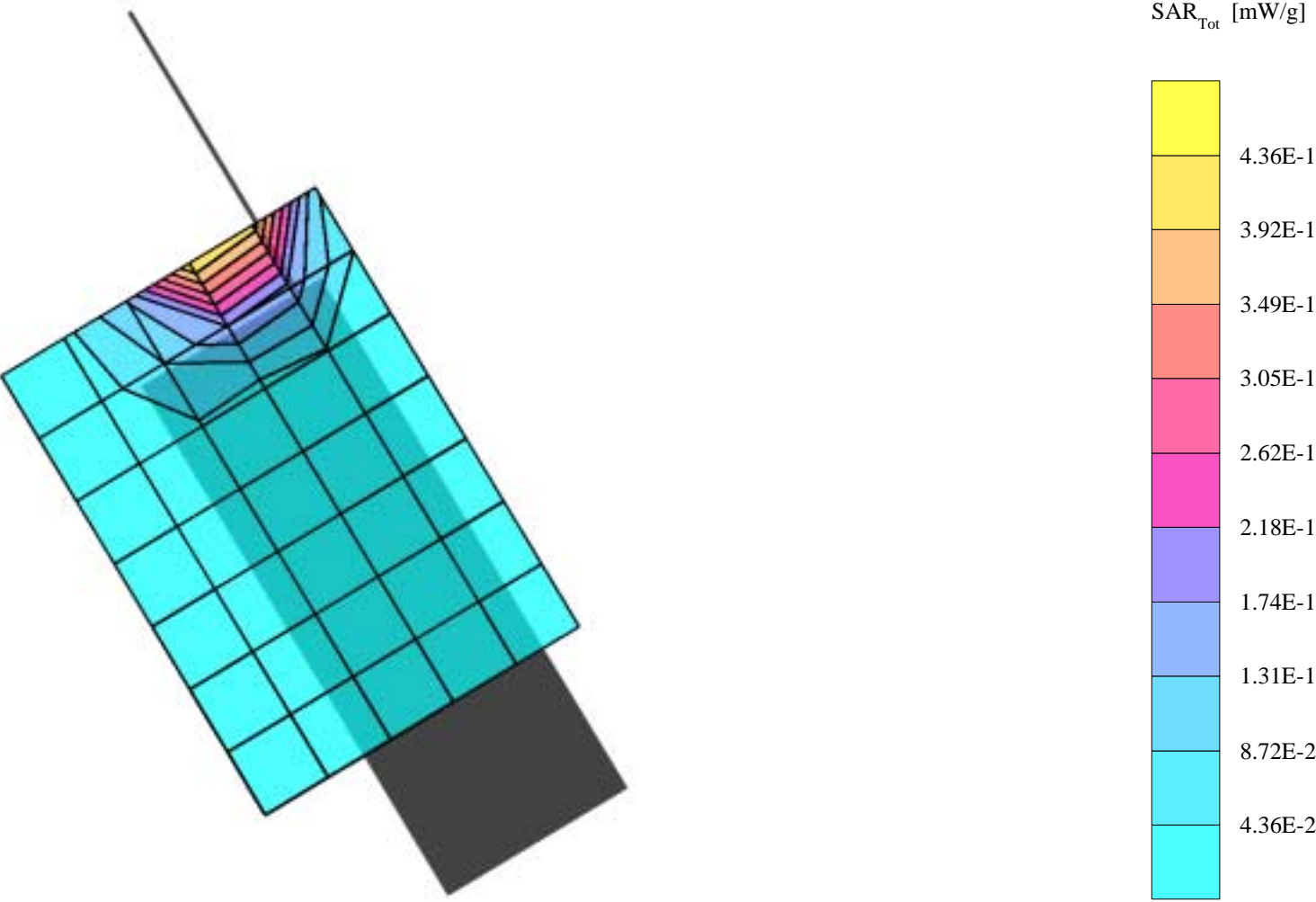
SAM 2 Phantom; Righ Hand Section; Position: tilted; Frequency: 1880 MHz

Probe: ET3DV6 - SN1381; ConvF(5.22,5.22,5.22); Crest factor: 8.0; Brain 1880 MHz SCC34:  $\sigma = 1.44 \text{ mho/m}$   $\epsilon = 38.5$   $\rho = 1.00 \text{ g/cm}^3$ , liquid temperature 22.3 C

Cube 5x5x7: SAR (1g): 0.573 mW/g, SAR (10g): 0.328 mW/g

Coarse: Dx = 15.0, Dy = 15.0, Dz = 10.0

Powerdrift: 0.12 dB



P7QNPM-7, BH2-AL01, white gold cover

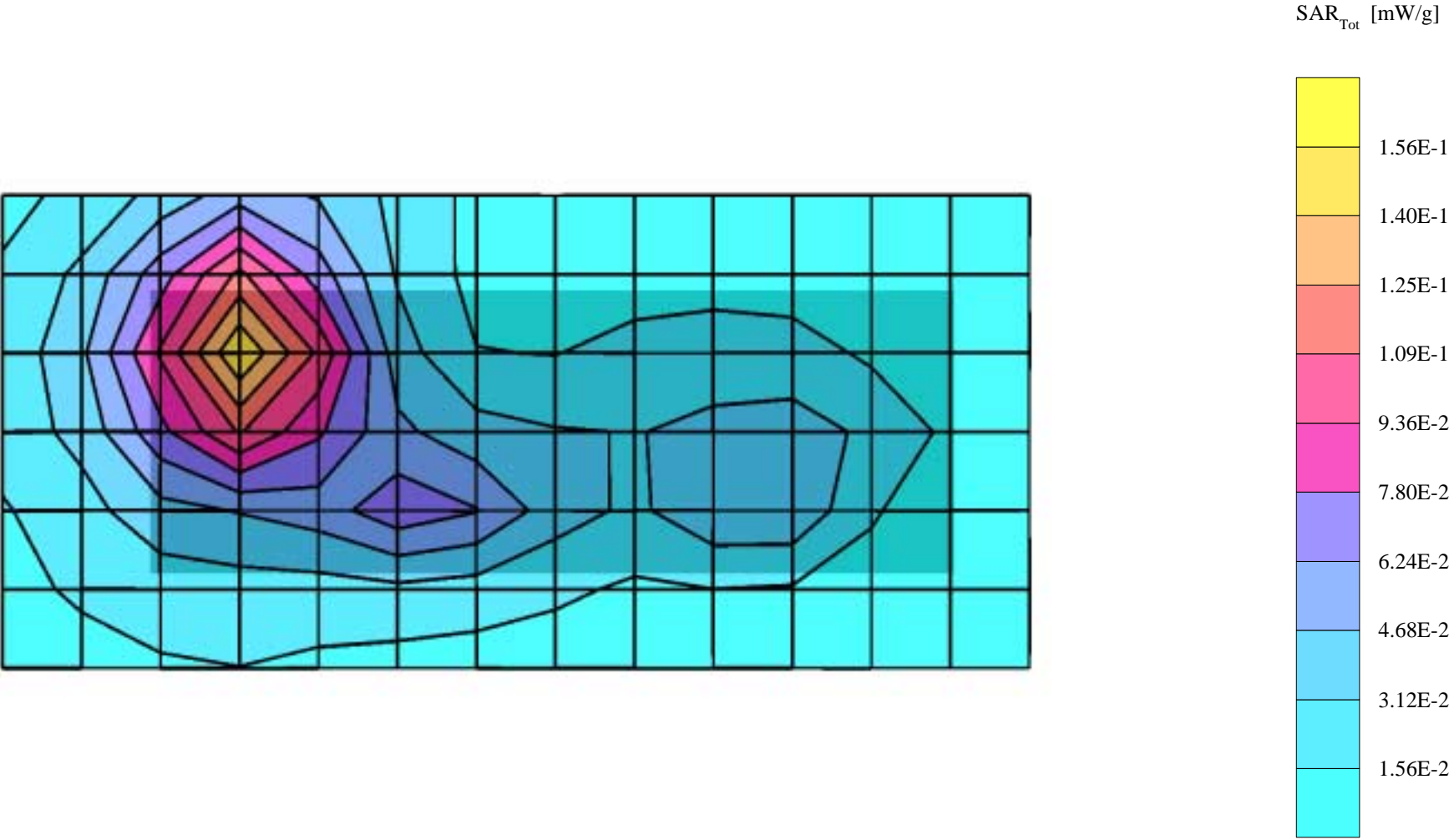
SAM 1 Phantom; Flat Section; Position: body worn; Frequency: 1850 MHz

Probe: ET3DV6 - SN1381; ConvF(4.96,4.96,4.96); Crest factor: 8.0; Muscle 1880 MHz:  $\sigma = 1.50 \text{ mho/m}$   $\epsilon = 52.8$   $\rho = 1.00 \text{ g/cm}^3$ , liquid temperature 22.3 C

Cube 5x5x7: SAR (1g): 0.139 mW/g, SAR (10g): 0.0781 mW/g

Coarse: Dx = 12.0, Dy = 12.0, Dz = 10.0

Powerdrift: -0.15 dB



P7QNPM-7, BH2-AL01, white gold cover

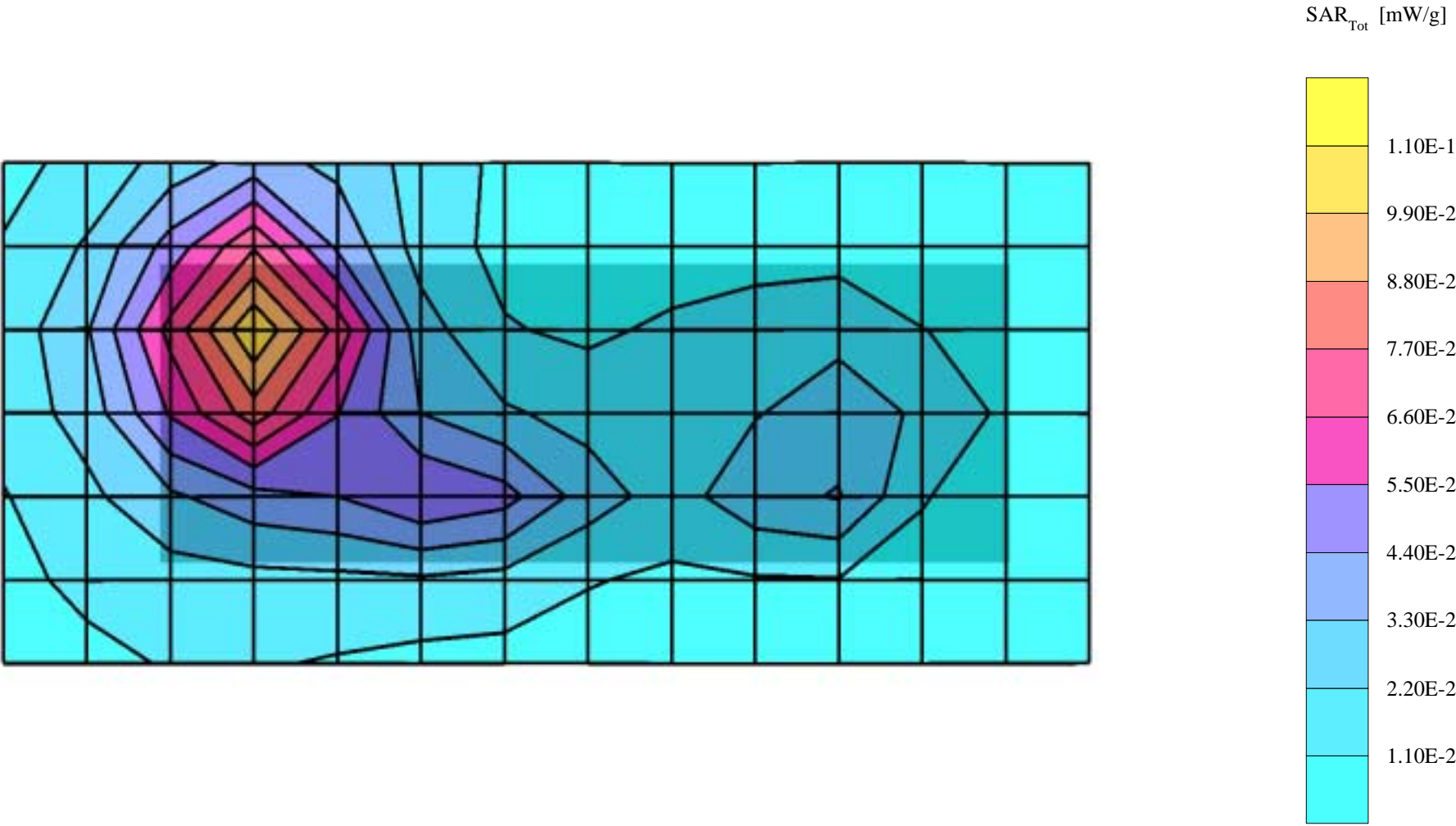
SAM 1 Phantom; Flat Section; Position: body worn; Frequency: 1850 MHz

Probe: ET3DV6 - SN1381; ConvF(4.96,4.96,4.96); Crest factor: 8.0; Muscle 1880 MHz:  $\sigma = 1.50 \text{ mho/m}$   $\epsilon = 52.8$   $\rho = 1.00 \text{ g/cm}^3$ , liquid temperature 22.8 C

Cube 5x5x7: SAR (1g): 0.103 mW/g, SAR (10g): 0.0569 mW/g

Coarse: Dx = 12.0, Dy = 12.0, Dz = 10.0

Powerdrift: 0.04 dB



P7QNPM-7, BH2-AL01, white gold cover

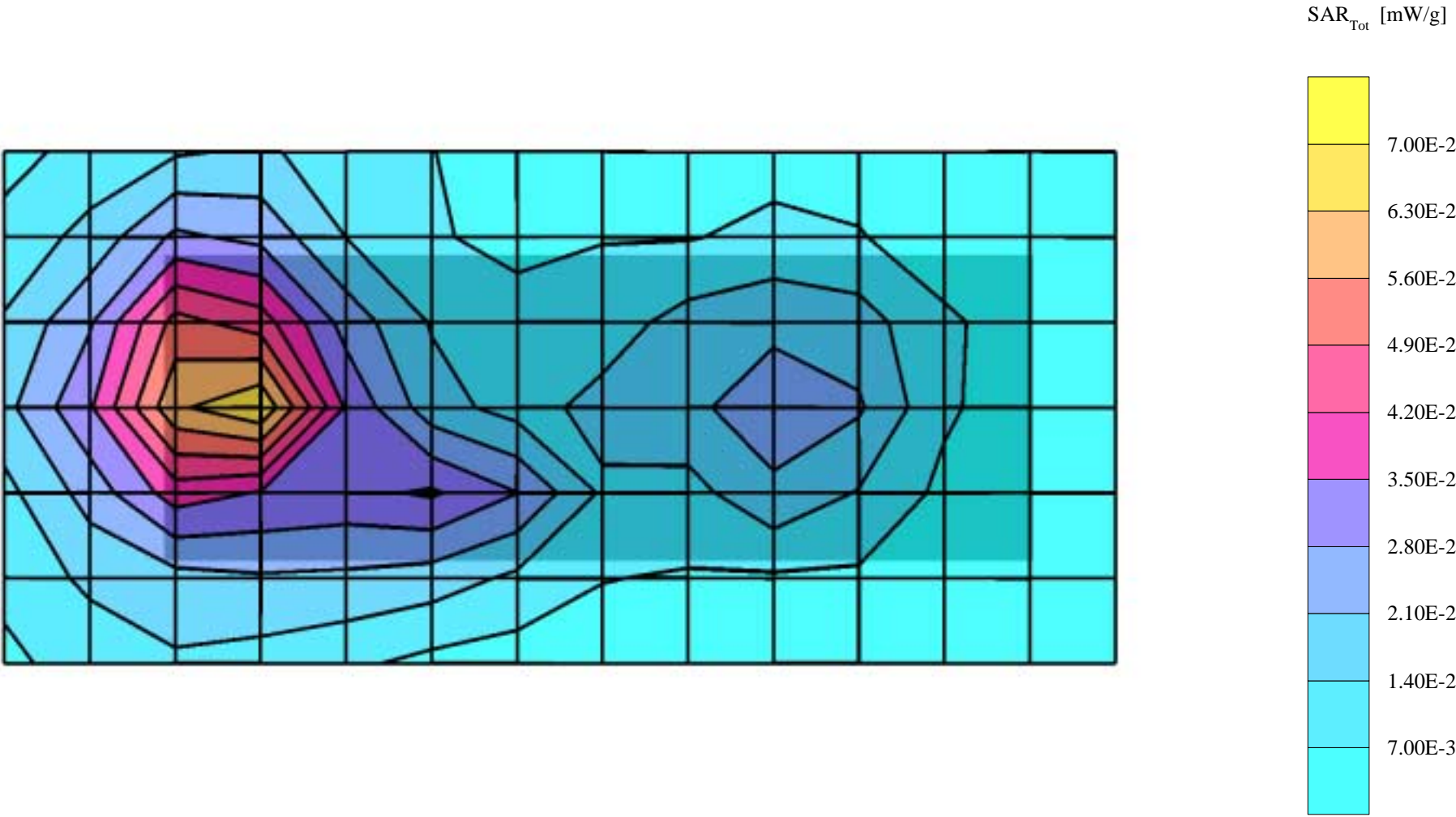
SAM 1 Phantom; Flat Section; Position: body worn; Frequency: 1850 MHz

Probe: ET3DV6 - SN1381; ConvF(4.96,4.96,4.96); Crest factor: 8.0; Muscle 1880 MHz:  $\sigma = 1.50 \text{ mho/m}$   $\epsilon = 52.8$   $\rho = 1.00 \text{ g/cm}^3$ , liquid temperature 22.8 C

Cube 5x5x7: SAR (1g): 0.0678 mW/g, SAR (10g): 0.0369 mW/g

Coarse: Dx = 12.0, Dy = 12.0, Dz = 10.0

Powerdrift: -0.11 dB



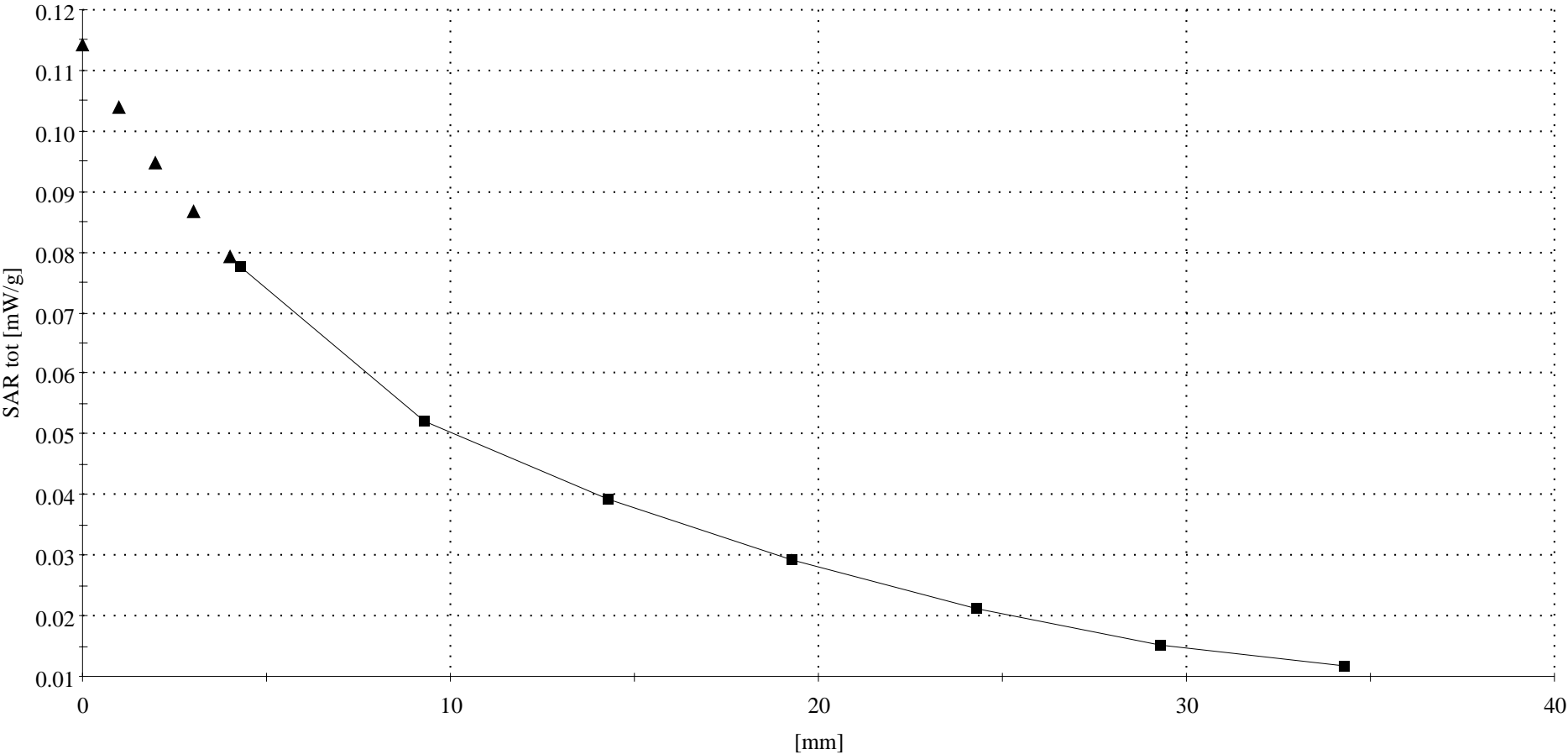
P7QNPM-7, white gold cover

SAM 2 Phantom; Left Hand Section; Position: tilted; Frequency: 1880 MHz

Probe: ET3DV6 - SN1381; ConvF(5.22,5.22,5.22); Crest factor: 8.0; Brain 1880 MHz SCC34:  $\sigma = 1.44 \text{ mho/m}$   $\epsilon = 38.5$   $\rho = 1.00 \text{ g/cm}^3$ , liquid temperature 22.0 C

Cube 5x5x7: SAR (1g): 0.768 mW/g , SAR (10g): 0.400 mW/g

Cube 5x5x7: Dx = 8.0, Dy = 8.0, Dz = 5.0



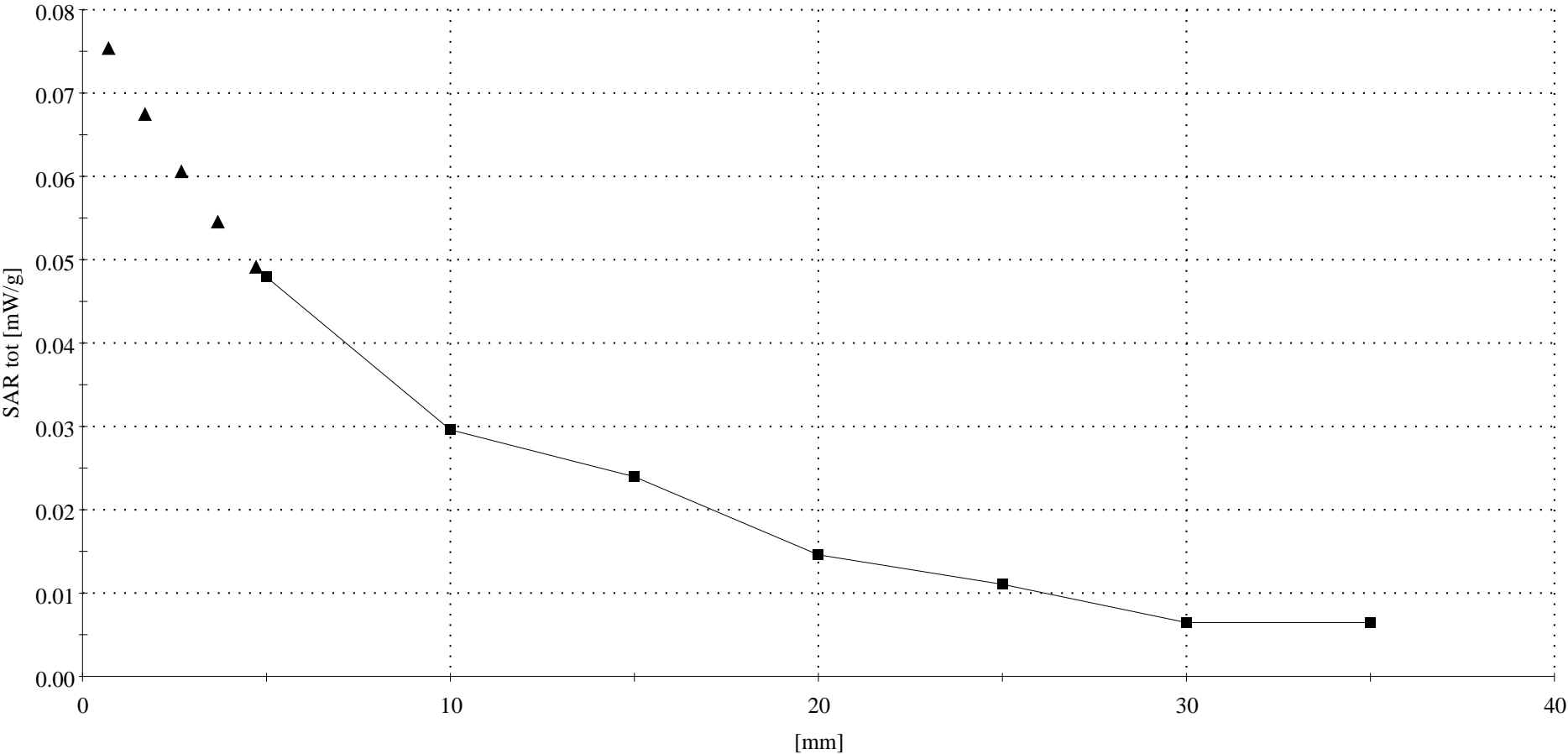
P7QNPM-7, BH2-AL01, white gold cover

SAM 1 Phantom; Flat Section; Position: body worn; Frequency: 1850 MHz

Probe: ET3DV6 - SN1381; ConvF(4.96,4.96,4.96); Crest factor: 8.0; Muscle 1880 MHz:  $\sigma = 1.50 \text{ mho/m}$   $\epsilon = 52.8$   $\rho = 1.00 \text{ g/cm}^3$ , liquid temperature 22.8 C

Cube 5x5x7: SAR (1g): 0.139 mW/g, SAR (10g): 0.0781 mW/g

Cube 5x5x7: Dx = 8.0, Dy = 8.0, Dz = 5.0



**APPENDIX C.**

**Calibration Certificate(s)**

## Calibration Certificate

### Dosimetric E-Field Probe

Type:

**ET3DV6**

Serial Number:

**1381**

Place of Calibration:

**Zurich**

Date of Calibration:

**October 25, 2001**

Calibration Interval:

**12 months**

Schmid & Partner Engineering AG hereby certifies, that this device has been calibrated on the date indicated above. The calibration was performed in accordance with specifications and procedures of Schmid & Partner Engineering AG.

Wherever applicable, the standards used in the calibration process are traceable to international standards. In all other cases the standards of the Laboratory for EMF and Microwave Electronics at the Swiss Federal Institute of Technology (ETH) in Zurich, Switzerland have been applied.

Calibrated by:

*Nikolaus Meriana*

Approved by:

*Julian Kott*



# Probe ET3DV6

## SN:1381

Manufactured:	September 18, 1999
Last calibration:	October 6, 2000
Recalibrated:	October 25, 2001

Calibrated for System DASY3

## DASY3 - Parameters of Probe: ET3DV6 SN:1381

### Sensitivity in Free Space

NormX	<b>1.57</b> $\mu\text{V}/(\text{V}/\text{m})^2$
NormY	<b>1.70</b> $\mu\text{V}/(\text{V}/\text{m})^2$
NormZ	<b>1.78</b> $\mu\text{V}/(\text{V}/\text{m})^2$

### Diode Compression

DCP X	<b>95</b> mV
DCP Y	<b>95</b> mV
DCP Z	<b>95</b> mV

### Sensitivity in Tissue Simulating Liquid

**Head**                      **450 MHz**                       $\epsilon_r = 43.5 \pm 5\%$                        $S = 0.87 \pm 10\%$  mho/m

ConvF X	<b>6.66</b> extrapolated	Boundary effect:	
ConvF Y	<b>6.66</b> extrapolated	Alpha	<b>0.29</b>
ConvF Z	<b>6.66</b> extrapolated	Depth	<b>2.78</b>

**Head**                      **800 - 1000 MHz**                       $\epsilon_r = 39.0 - 43.5$                        $S = 0.80 - 1.10$  mho/m

ConvF X	<b>6.21</b> $\pm 9.5\%$ (k=2)	Boundary effect:	
ConvF Y	<b>6.21</b> $\pm 9.5\%$ (k=2)	Alpha	<b>0.40</b>
ConvF Z	<b>6.21</b> $\pm 9.5\%$ (k=2)	Depth	<b>2.61</b>

**Head**                      **1500 MHz**                       $\epsilon_r = 40.4 \pm 5\%$                        $S = 1.23 \pm 10\%$  mho/m

ConvF X	<b>5.61</b> interpolated	Boundary effect:	
ConvF Y	<b>5.61</b> interpolated	Alpha	<b>0.55</b>
ConvF Z	<b>5.61</b> interpolated	Depth	<b>2.38</b>

**Head**                      **1700 - 1910 MHz**                       $\epsilon_r = 39.5 - 41.0$                        $S = 1.20 - 1.55$  mho/m

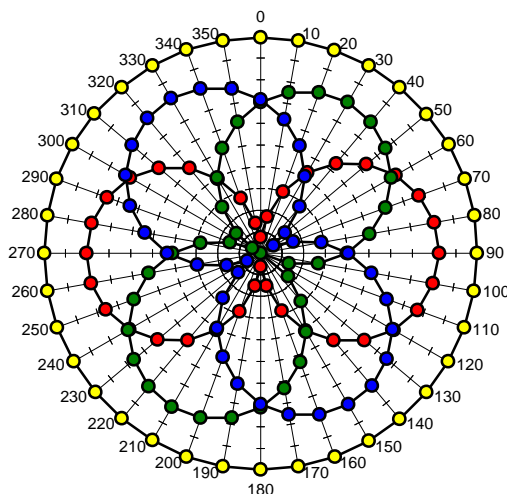
ConvF X	<b>5.31</b> $\pm 9.5\%$ (k=2)	Boundary effect:	
ConvF Y	<b>5.31</b> $\pm 9.5\%$ (k=2)	Alpha	<b>0.62</b>
ConvF Z	<b>5.31</b> $\pm 9.5\%$ (k=2)	Depth	<b>2.27</b>

### Sensor Offset

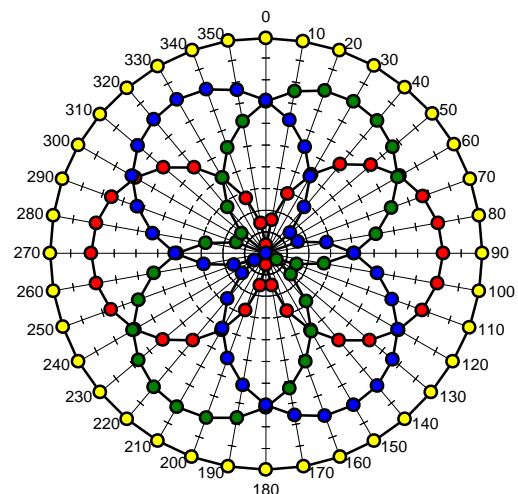
Probe Tip to Sensor Center	<b>2.7</b>	mm
Optical Surface Detection	<b>1.6 <math>\pm</math> 0.2</b>	mm

## Receiving Pattern (f), $q = 0^\circ$

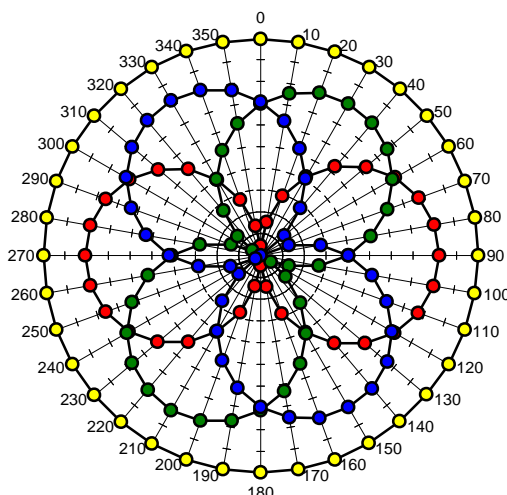
**f = 30 MHz, TEM cell ifi110**



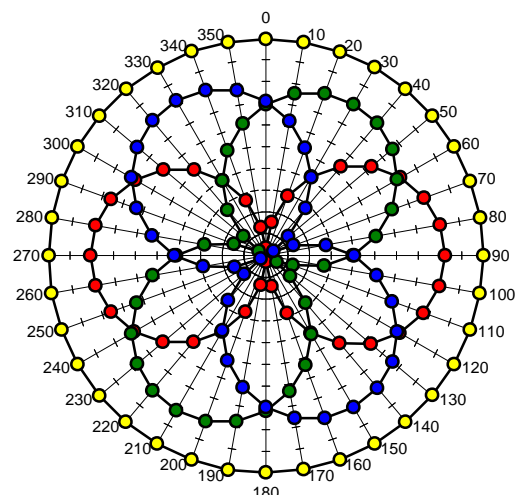
**f = 100 MHz, TEM cell ifi110**

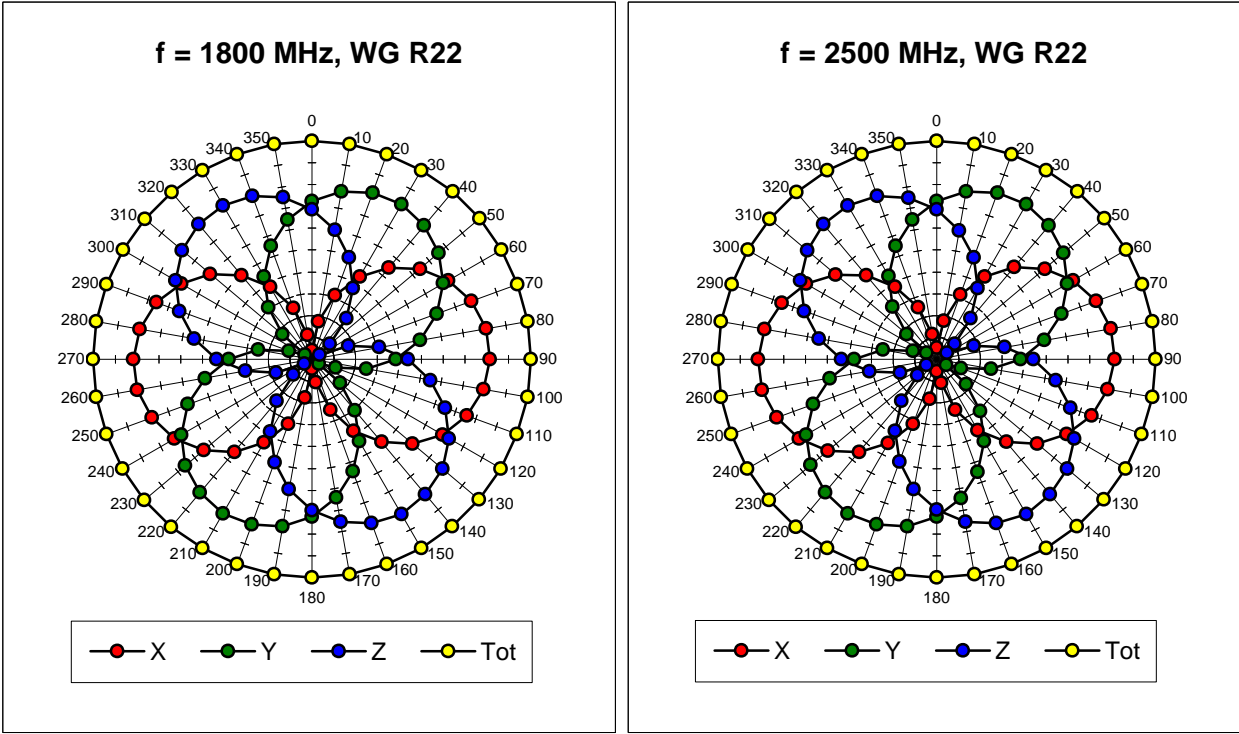


**f = 300 MHz, TEM cell ifi110**

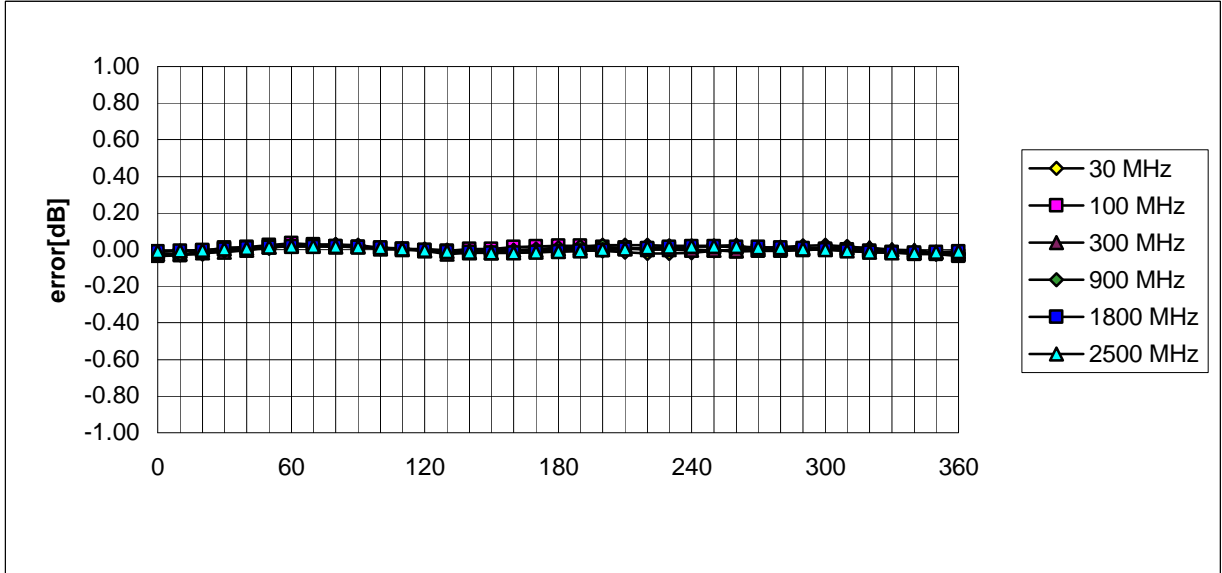


**f = 900 MHz, TEM cell ifi110**



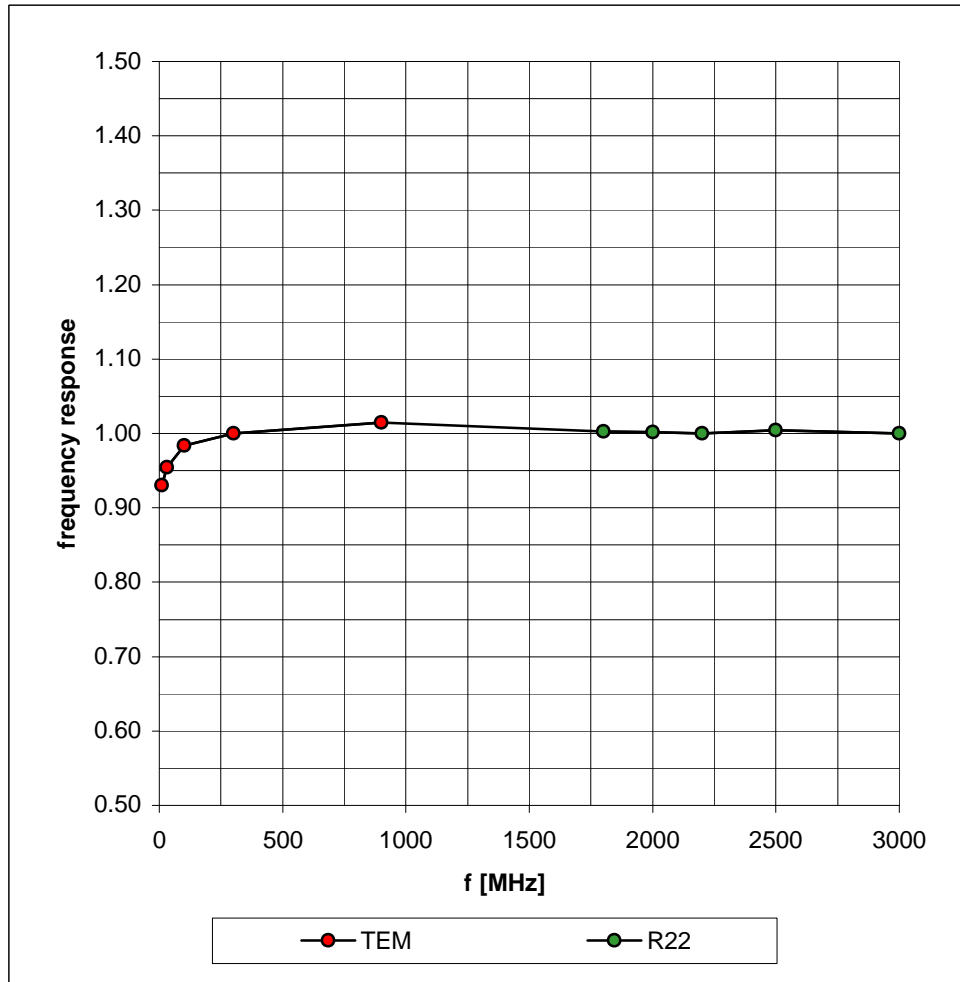


Isotropy Error (f), q = 0°

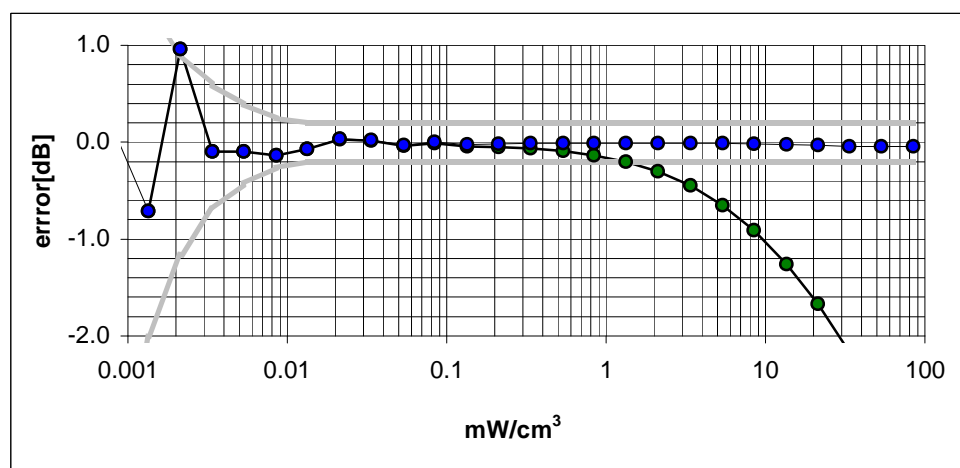
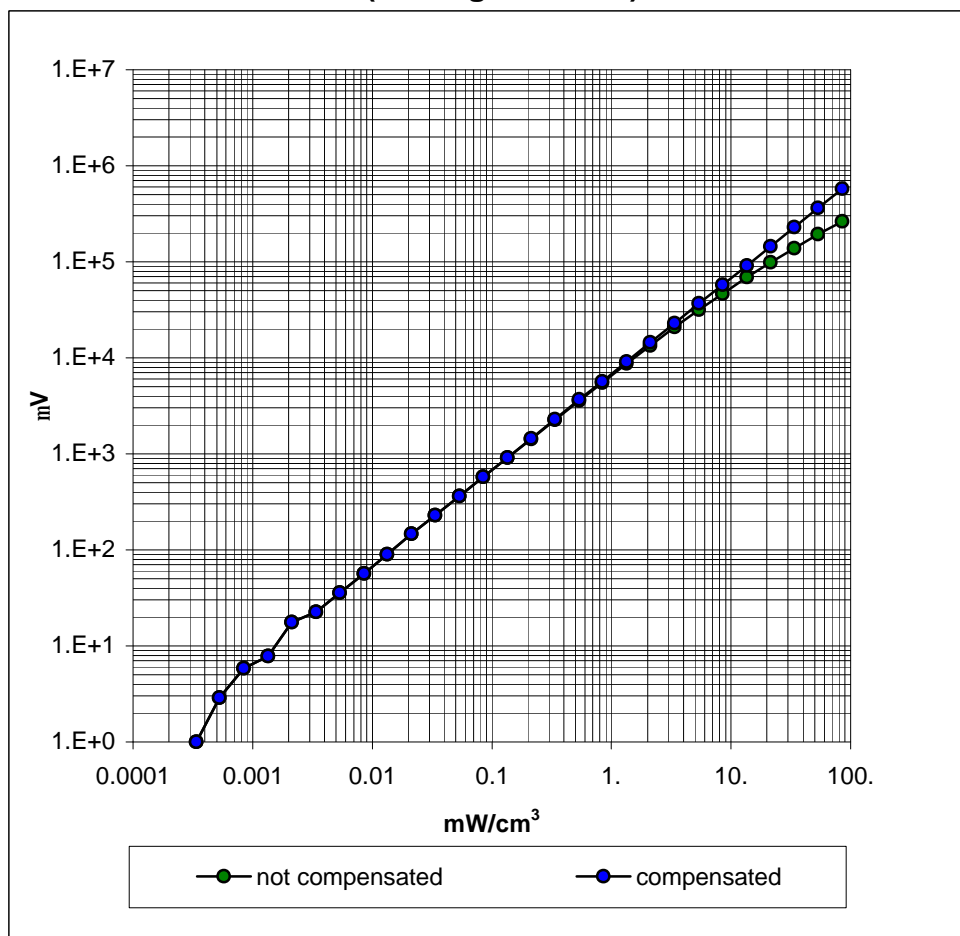


## Frequency Response of E-Field

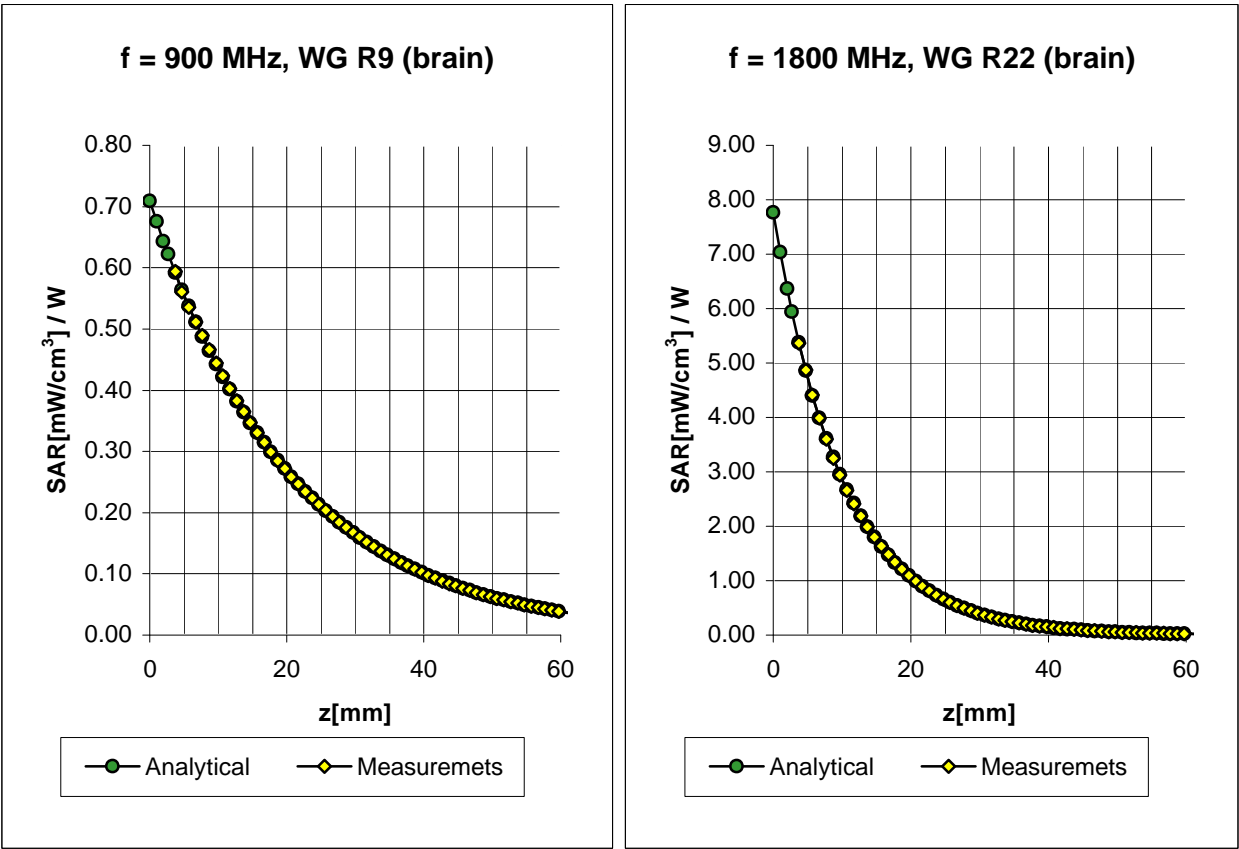
( TEM-Cell:ifi110, Waveguide R22)



## Dynamic Range f(SAR<sub>brain</sub>) ( Waveguide R22 )



Conversion Factor Assessment



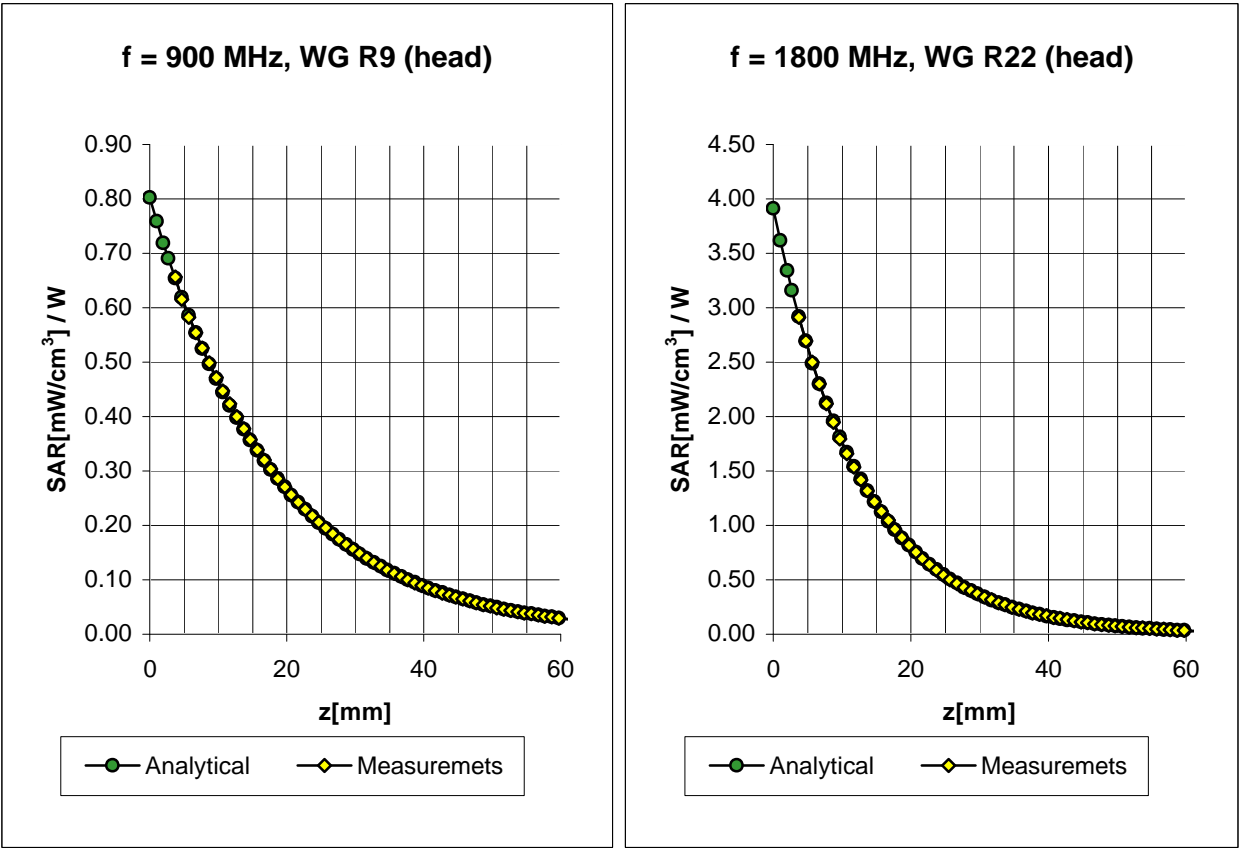
Brain      800 - 1000    MHz                       $\epsilon_r = 39.3 - 43.0$                        $s = 0.75 - 1.00$  mho/m

ConvF X	<b>6.13</b> ± 9.5% (k=2)	Boundary effect:
ConvF Y	<b>6.13</b> ± 9.5% (k=2)	Alpha <b>0.45</b>
ConvF Z	<b>6.13</b> ± 9.5% (k=2)	Depth <b>2.36</b>

Brain      1700 - 1910 MHz                       $\epsilon_r = 39.3 - 41.6$                        $s = 1.53 - 1.90$  mho/m

ConvF X	<b>5.53</b> ± 9.5% (k=2)	Boundary effect:
ConvF Y	<b>5.53</b> ± 9.5% (k=2)	Alpha <b>0.66</b>
ConvF Z	<b>5.53</b> ± 9.5% (k=2)	Depth <b>2.07</b>

# Conversion Factor Assessment



Head      800 - 1000   MHz                       $\epsilon_r = 39.0 - 43.5$                        $s = 0.80 - 1.10$  mho/m

ConvF X	<b>6.21</b> ± 9.5% (k=2)	Boundary effect:
ConvF Y	<b>6.21</b> ± 9.5% (k=2)	Alpha <b>0.40</b>
ConvF Z	<b>6.21</b> ± 9.5% (k=2)	Depth <b>2.61</b>

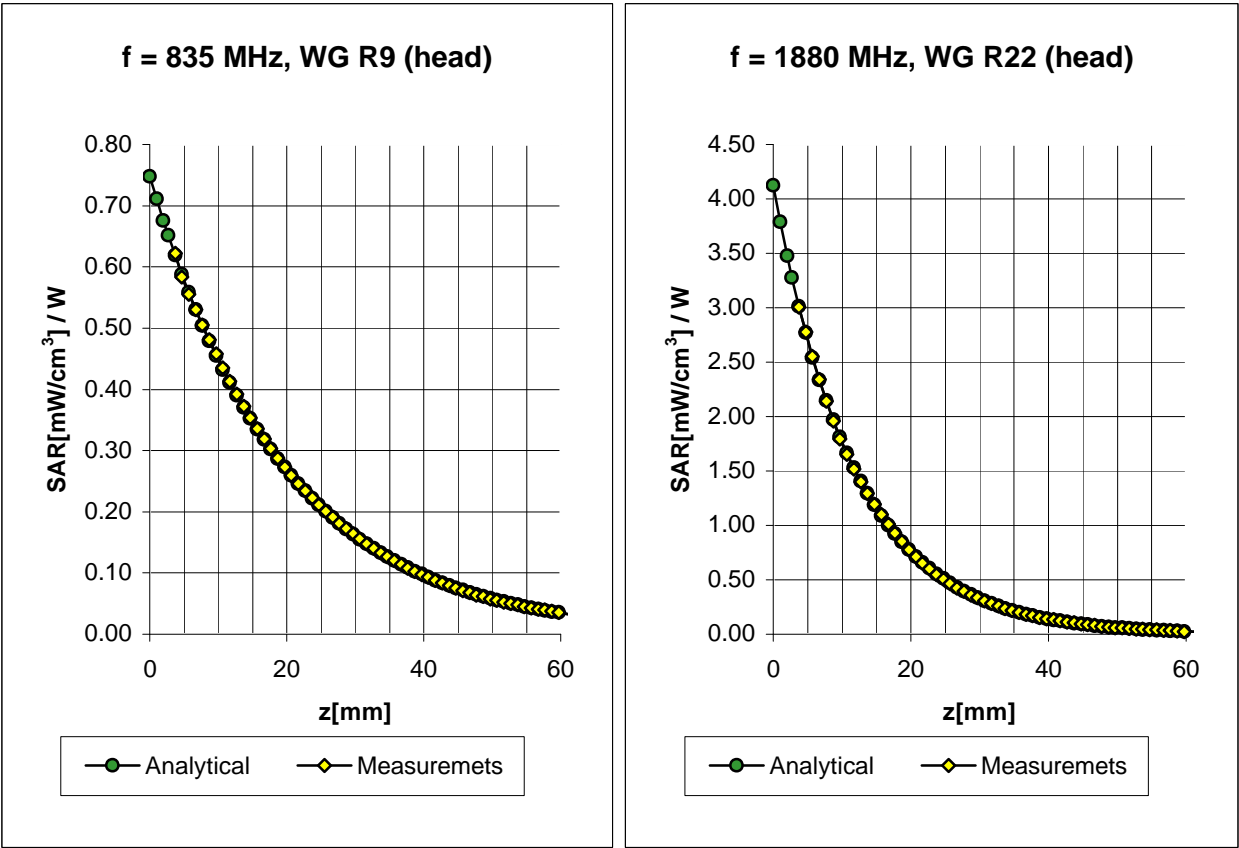
Head      1700 - 1910 MHz                       $\epsilon_r = 39.5 - 41.0$                        $s = 1.20 - 1.55$  mho/m

ConvF X	<b>5.31</b> ± 9.5% (k=2)	Boundary effect:
ConvF Y	<b>5.31</b> ± 9.5% (k=2)	Alpha <b>0.62</b>
ConvF Z	<b>5.31</b> ± 9.5% (k=2)	Depth <b>2.27</b>

**ET3DV6 SN:1381**



# Conversion Factor Assessment

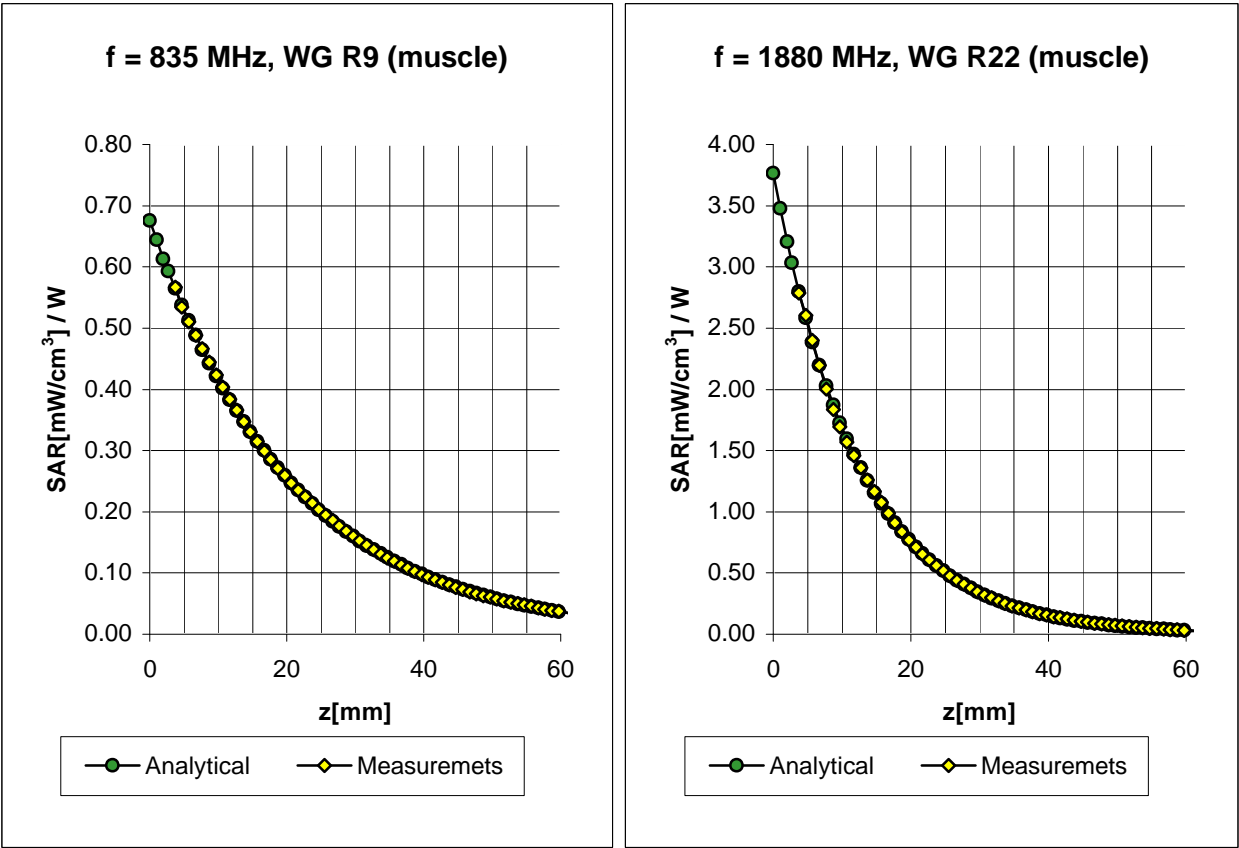


Head	835 MHz	$\epsilon_r = 41.5 \pm 5\%$	$S = 0.90 \pm 5\% \text{ mho/m}$
ConvF X	<b>6.20</b> $\pm 8.9\%$ (k=2)	Boundary effect:	
ConvF Y	<b>6.20</b> $\pm 8.9\%$ (k=2)	Alpha	<b>0.41</b>
ConvF Z	<b>6.20</b> $\pm 8.9\%$ (k=2)	Depth	<b>2.58</b>

Head	1880 MHz	$\epsilon_r = 40.0 \pm 5\%$	$S = 1.540 \pm 5\% \text{ mho/m}$
ConvF X	<b>5.22</b> $\pm 8.9\%$ (k=2)	Boundary effect:	
ConvF Y	<b>5.22</b> $\pm 8.9\%$ (k=2)	Alpha	<b>0.64</b>
ConvF Z	<b>5.22</b> $\pm 8.9\%$ (k=2)	Depth	<b>2.23</b>

ET3DV6 SN:1381

# Conversion Factor Assessment



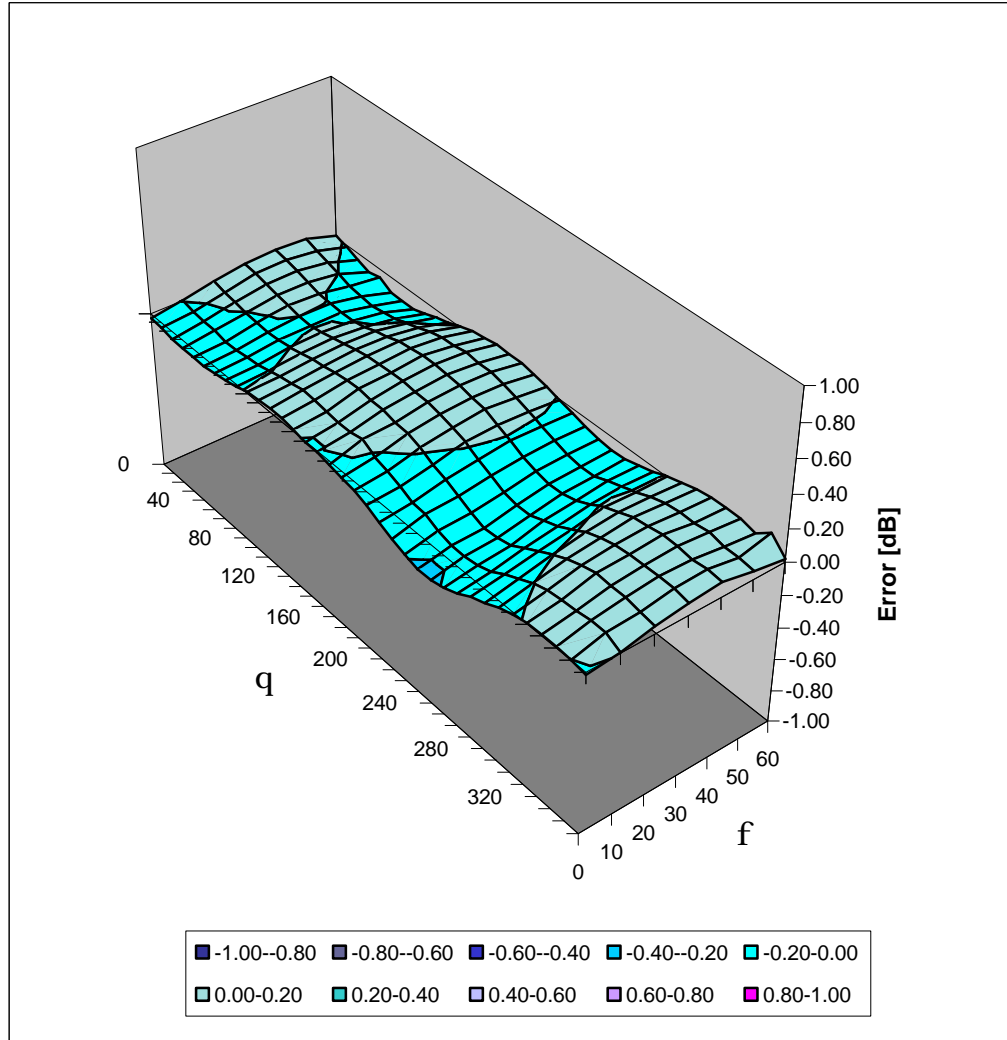
Muscle	835 MHz	$\epsilon_r = 55.2 \pm 5\%$	$s = 0.97 \pm 5\%$ mho/m
ConvF X	<b>6.04</b> $\pm 8.9\%$ (k=2)	Boundary effect:	
ConvF Y	<b>6.04</b> $\pm 8.9\%$ (k=2)	Alpha	<b>0.42</b>
ConvF Z	<b>6.04</b> $\pm 8.9\%$ (k=2)	Depth	<b>2.73</b>

Muscle	1880 MHz	$\epsilon_r = 53.3 \pm 5\%$	$s = 1.52 \pm 5\%$ mho/m
ConvF X	<b>4.96</b> $\pm 8.9\%$ (k=2)	Boundary effect:	
ConvF Y	<b>4.96</b> $\pm 8.9\%$ (k=2)	Alpha	<b>0.91</b>
ConvF Z	<b>4.96</b> $\pm 8.9\%$ (k=2)	Depth	<b>1.88</b>

ET3DV6 SN:1381

# Deviation from Isotropy in HSL

Error (q,f), f = 900 MHz



**Schmid & Partner  
Engineering AG**

---

Zeughausstrasse 43, 8004 Zurich, Switzerland, Phone +41 1 245 97 00, Fax +41 1 245 97 79

---

**DASY3**

**Dipole Validation Kit**

**Type: D1900V2**

**Serial: 511**

**Manufactured: October 20, 1999**  
**Calibrated: February 13, 2001**

## **1. Measurement Conditions**

The measurements were performed in the flat section of the new generic twin phantom filled with head simulating solution of the following electrical parameters at 1900 MHz:

Relative permittivity	39.2	± 5%
Conductivity	1.47 mho/m	± 10%

The DASY3 System (Software version 3.1c) with a dosimetric E-field probe ET3DV6 (SN:1507, conversion factor 5.57 at 1800 MHz) was used for the measurements.

The dipole feedpoint was positioned below the center marking and oriented parallel to the body axis (the long side of the phantom). The standard measuring distance was 10mm from dipole center to the solution surface. The included distance holder was used during measurements for accurate distance positioning.

The coarse grid with a grid spacing of 15mm was aligned with the dipole. The 5x5x7 fine cube was chosen for cube integration. Probe isotropy errors were cancelled by measuring the SAR with normal and 90° turned probe orientations and averaging.

The dipole input power (forward power) was 250mW ± 3 %. The results are normalized to 1W input power.

## **2. SAR Measurement**

Standard SAR-measurements were performed with the head phantom according to the measurement conditions described in section 1. The results (see figure) have been normalized to a dipole input power of 1W (forward power). The resulting averaged SAR-values are:

averaged over 1 cm<sup>3</sup> (1 g) of tissue: 42.8 mW/g

averaged over 10 cm<sup>3</sup> (10 g) of tissue: 21.9 mW/g

Note: If the liquid parameters for validation are slightly different from the ones used for initial calibration, the SAR-values will be different as well. The estimated sensitivities of SAR-values and penetration depths to the liquid parameters are listed in the DASY Application Note 4: 'SAR Sensitivities'.

### 3. Dipole impedance and return loss

The impedance was measured at the SMA-connector with a network analyzer and numerically transformed to the dipole feedpoint. The transformation parameters from the SMA-connector to the dipole feedpoint are:

Electrical delay:	1.205 ns	(one direction)
Transmission factor:	0.983	(voltage transmission, one direction)

The dipole was positioned at the flat phantom sections according to section 1 and the distance holder was in place during impedance measurements.

Feedpoint impedance at 1900 MHz:	$\text{Re}\{Z\} = 50.1 \Omega$
	$\text{Im}\{Z\} = -1.5 \Omega$
Return Loss at 1900 MHz	- 34.9 dB

### 4. Measurement Conditions

The measurements were performed in the flat section of the new generic twin phantom filled with muscle simulating solution of the following electrical parameters at 1900 MHz:

Relative permittivity	53.5	$\pm 5\%$
Conductivity	1.46 mho/m	$\pm 10\%$

The DASY3 System (Software version 3.1c) with a dosimetric E-field probe ET3DV6 (SN:1507, conversion factor 4.85 at 1800 MHz) was used for the measurements.

The dipole feedpoint was positioned below the center marking and oriented parallel to the body axis (the long side of the phantom). The standard measuring distance was 10mm from dipole center to the solution surface. The included distance holder was used during measurements for accurate distance positioning.

The coarse grid with a grid spacing of 15mm was aligned with the dipole. The 5x5x7 fine cube was chosen for cube integration. Probe isotropy errors were cancelled by measuring the SAR with normal and 90° turned probe orientations and averaging.

The dipole input power (forward power) was 250mW  $\pm 3\%$ . The results are normalized to 1W input power.

## **6. SAR Measurement**

Standard SAR-measurements were performed with the head phantom according to the measurement conditions described in section 1. The results (see figure) have been normalized to a dipole input power of 1W (forward power). The resulting averaged SAR-values are:

averaged over 1 cm<sup>3</sup> (1 g) of tissue:            42.4 mW/g

averaged over 10 cm<sup>3</sup> (10 g) of tissue:        22.0 mW/g

Note: If the liquid parameters for validation are slightly different from the ones used for initial calibration, the SAR-values will be different as well.

## **7. Dipole impedance and return loss**

The impedance was measured at the SMA-connector with a network analyzer and numerically transformed to the dipole feedpoint. The transformation parameters from the SMA-connector to the dipole feedpoint are:

Electrical delay:	1.205 ns	(one direction)
Transmission factor:	0.983	(voltage transmission, one direction)

The dipole was positioned at the flat phantom sections according to section 1 and the distance holder was in place during impedance measurements.

Feedpoint impedance at 1900 MHz:             $\text{Re}\{Z\} = 45.3 \Omega$

$\text{Im}\{Z\} = -1.0 \Omega$

Return Loss at 1900 MHz                        - 25.6 dB

## **8. Handling**

The dipole is made of standard semirigid coaxial cable. The center conductor of the feeding line is directly connected to the second arm of the dipole. The antenna is therefore short-circuited for DC-signals.

Do not apply excessive force to the dipole arms, because they might bend. If the dipole arms have to be bent back, take care to release stress to the soldered connections near the feedpoint; they might come off.

After prolonged use with 40W radiated power, only a slight warming of the dipole near the feedpoint can be measured.

# Validation Dipole D1900V2 SN:511, d = 10 mm

Frequency: 1900 MHz; Antenna Input Power: 250 [mW]

Generic Twin Phantom; Flat Section; Grid Spacing: Dx = 15.0, Dy = 15.0, Dz = 10.0

Probe: ET3DV6 - SN1507; ConvF(5.57,5.57,5.57) at 1800 MHz; IEEE1528 1900 MHz;  $\sigma = 1.47 \text{ mW/m}^2$ ;  $\epsilon_r = 39.2$ ;  $\rho = 1.00 \text{ g/cm}^3$

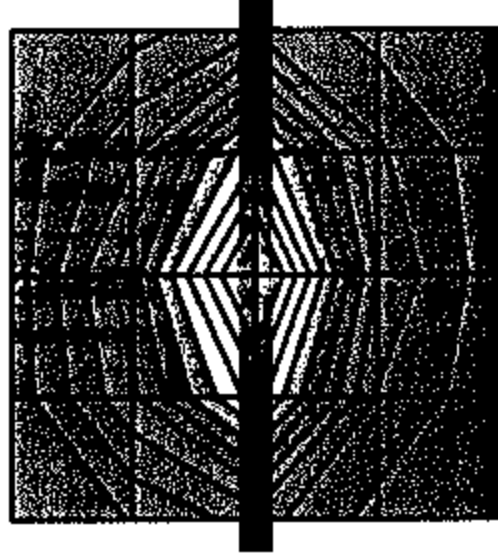
Cubes (2); Peak: 20.6 mW/g  $\pm 0.02 \text{ dB}$ , SAR (1g): 10.7 mW/g  $\pm 0.03 \text{ dB}$ , SAR (10g): 5.47 mW/g  $\pm 0.03 \text{ dB}$ , (Worst-case extrapolation)

Penetration depth: 7.9 (7.4, 9.1) [mm]

Powerdrift: 0.00 dB

SAR<sub>T<sub>ex</sub></sub> [mW/g]

1.00E+1  
9.00E+0  
8.00E+0  
7.00E+0  
6.00E+0  
5.00E+0  
4.00E+0  
3.00E+0  
2.00E+0  
1.00E+0

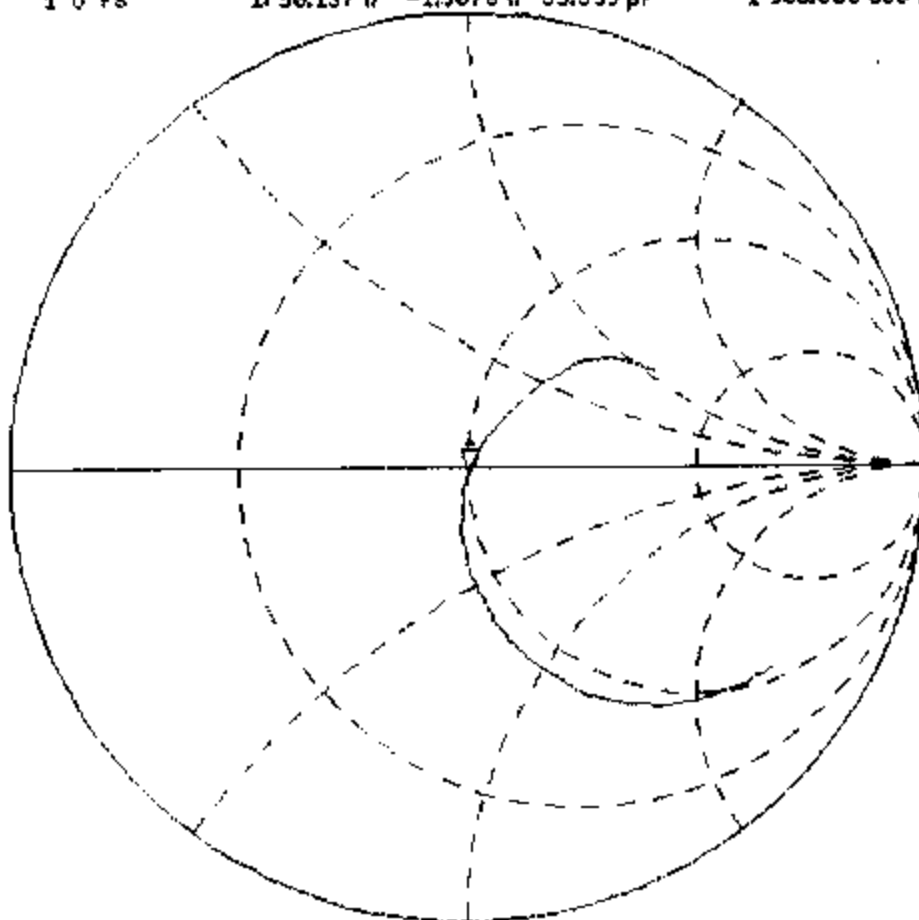




1 900.000 000 MHz

PR4  
De I

Cor  
niv 9  
16



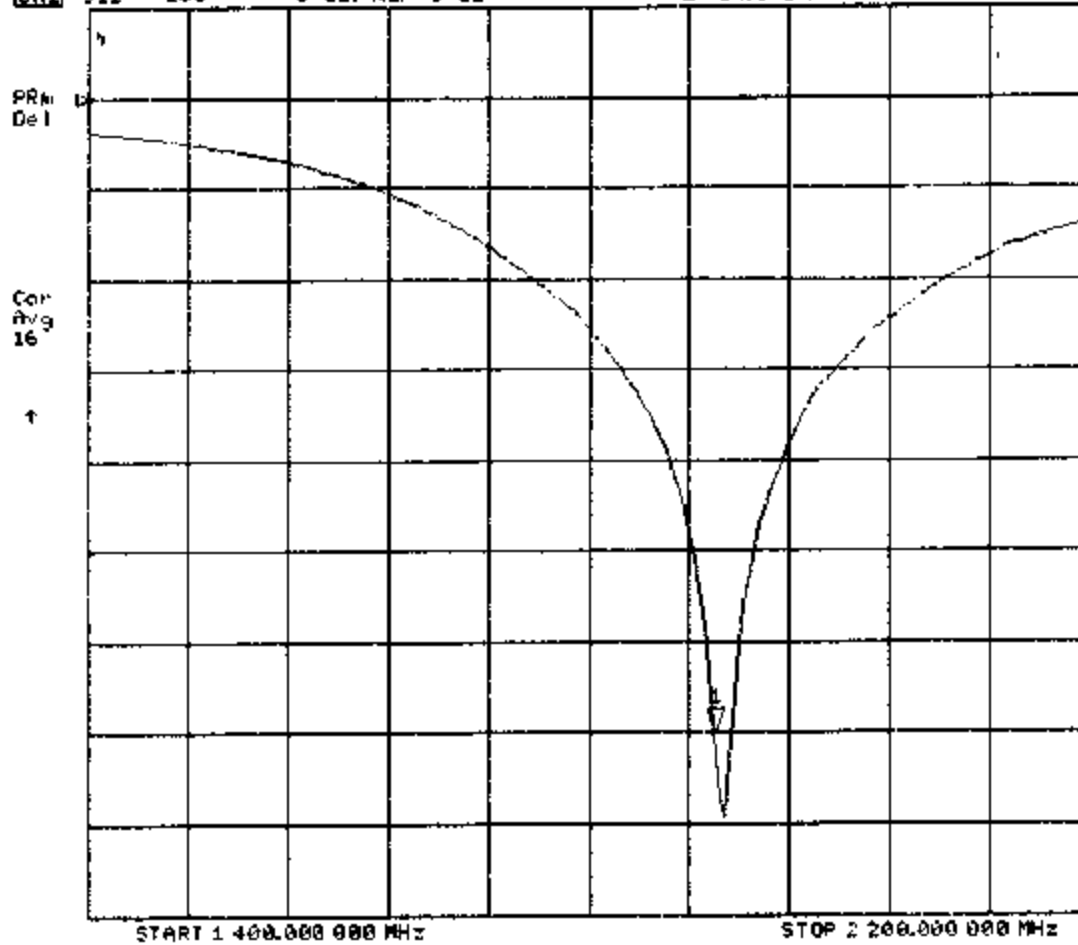
START 1 400,000 000 MHz

STOP 2 200.000 000 MHz

13 Feb 2001 10:46:40

CH1 S11 LOG 5 dB/REF 0 dB

11-34.942 dB 1 900.000 000 MHz



# Validation Dipole D1900V2 SN:511, d = 10 mm

Frequency: 1900 MHz; Antenna Input Power: 250 [mW]

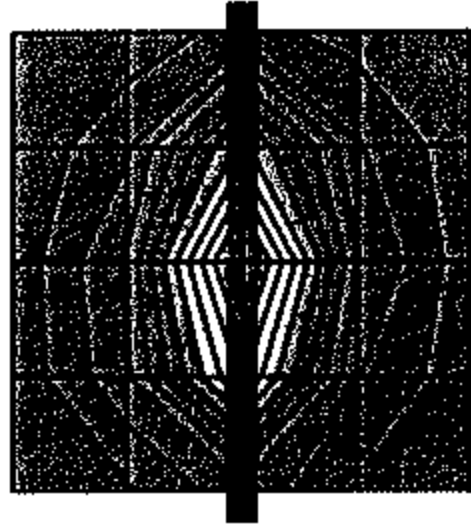
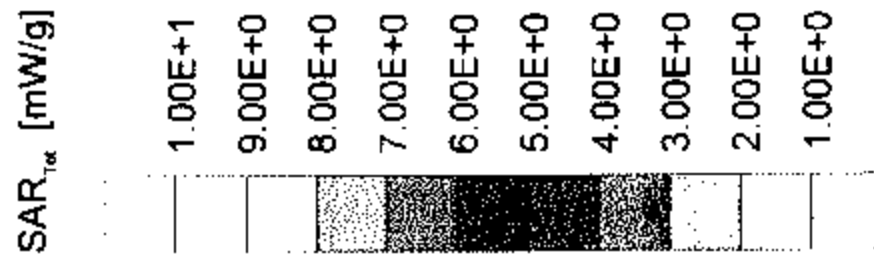
Generic: Twin Phantom; Flat Section; Grid Spacing: Dx = 15.0, Dy = 15.0, Dz = 10.0

Probe: ET3DV6 - SN1507; ConvF(4.85,4.85,4.85) at 1800 MHz; Muscle: 1900 MHz;  $\sigma = 1.46$  mho/m  $\epsilon_r = 53.5$   $\rho = 1.00$  g/cm<sup>3</sup>

Cubes (2): Peak: 20.0 mW/g  $\pm 0.06$  dB; SAR (1g) 10.6 mW/g  $\pm 0.05$  dB; SAR (10g): 5.49 mW/g  $\pm 0.04$  dB; (Worst-case extrapolation)

Penetration depth: 8.7 (7.9, 10.3) [mm]

Powerdrift: 0.01 dB



13 Feb 2001 18:09:51

CH1 S11 1 U FS

1145.260 n -1.0371 n 80.769 pF

1 900.000 000 MHz

PRn  
DeJ

Cor  
Avg  
16

