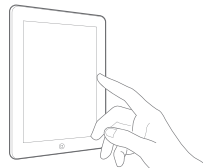
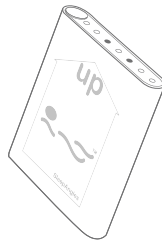


# INSTRUCTION MANUAL

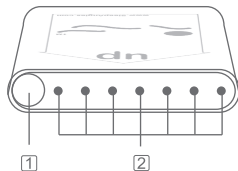
RX501  
SleepAngles Monitor

[www.SleepAngles.com](http://www.SleepAngles.com)



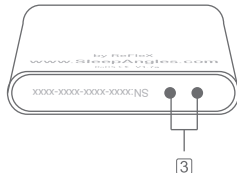


## SleepAngles Monitor



**1** Button

**2** Indicator light



**3** Charging leads



## Quick Start

1 Install the Base Station. Please refer to the RX901 instruction manual.

2 Visit [www.SleepAngles.com](http://www.SleepAngles.com)

3 Click on "New User"

i Enter personal information, email address and password

4 Click on "Add a Base Station"

i. Enter the Base Station Serial # and click on "Add"  
(base station serial number is located on its back)

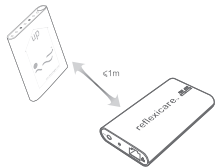
5 Click on "Add a Device"

i. Enter the SleepAngles Monitor Serial # and click on "Add"  
(device serial number is located next to the charging leads)

\*skip the steps above if information has been provided to you

## 6 Register your SleepAngles Monitor with your Base Station

- 1 Hold the SleepAngles Monitor less than one meter away from the Base Station



- 2 Press the white button for 7 seconds and then release

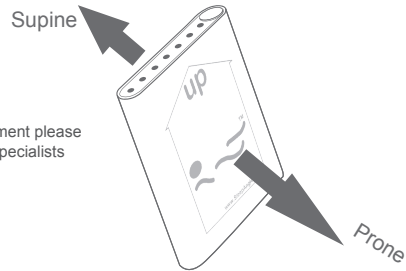


- 3 Seven green LEDs flashing indicating registration successful



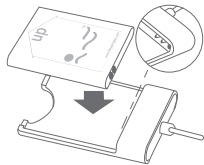
## Device Orientation

For proper monitor placement please consult with your Sleep Specialists

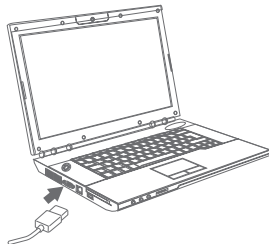




## Battery Charging



**1** Insert the SleepAngles monitor into the charging station



**2** Insert the USB connector of the charging station into the USB port . (90min Charging Cycle)



## Battery Status

1) Push the white button once

2) Interpretation: 3 lit red LEDs mean 3/7 battery power remaining





## Cautions

- In order to avoid others being hurt by the product and extend its lifetime, please obey the following cautions.

### Symbol Meaning

|   |                     |
|---|---------------------|
| ● | General Instruction |
| ⊘ | Forbidden           |
| ⊘ | Do not disassemble  |

## Battery Recharging

|   |  |
|---|--|
| ● | Rechargeable battery capacity is optimized after 2~3 charging cycles   |
|   | Battery performance: minimum 30 days continuous monitoring             |
|   | During battery recharging, it's normal for the device to warm up       |
|   | Operating temperature 0-40 celsius degree                              |
|   | When the battery is fully charged, all green LEDs will lit up          |
| ⊘ | The USB battery charger is designed only for RX501 SleepAngles Monitor |
|   | Do not store the USB battery charger in a hot or wet place             |
| ⊘ | Do not disassemble the product yourself                                |

## Miscellaneous

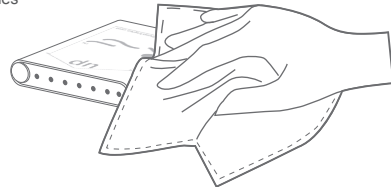
|   |  |
|---|--|
| ● | This sensor is only designed for torso angle during sleep  |
|   | Do not use the SleepAngles Monitor where there is strong radiation, as the device accuracy will be reduced |
|   | Data is forwarded to the SleepAngles Data Center in real-time  |
| ⊘ | Disassemble the product will void your warranty  |

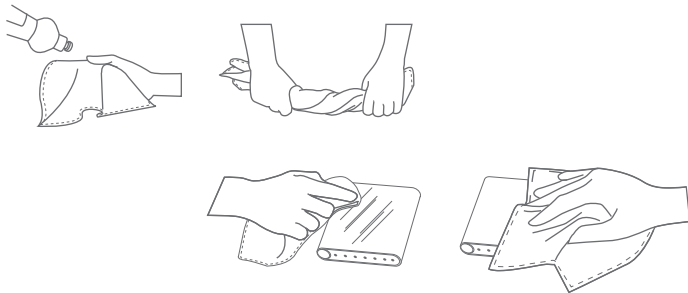
## Product maintenance

|   |  |
|---|--|
| ● | Keep the SleepAngles Monitor where it is dry and cool                                  |
|   | Keep the SleepAngles Monitor on a level table when you don't use it                    |
| ⊘ | Don't disassemble the product after you abandon it, and obey local environmental rules |

## Clean

- 1 Use tissue to keep the SleepAngles monitor free of dust and moisture





2 Dry the SleepAngles Monitor after applying cleaning solution



## Cautions

| Phenomenon                         | Description                                 | Methods   |
|------------------------------------|---|---|
| No indicator light                 | Low battery                                 | Recharge the battery  |
| Fail device registration due to... | possible radio interference                 | Keep closer to the Base Station   |
|                                    | No account                                  | Log on <a href="http://www.SleepAngles.com">www.SleepAngles.com</a> to create an user account |
|                                    | Activate too many products at the same time | Do it one by one  |
|                                    | Weak signal to the server                   | Check network status LED on the Base Station  |

|                              |   |   |
|------------------------------|---|---|
| Data transmission failure    | Out of transmission range                                   | Move the products closer to the base station. Data can only transmit up to 30m with a clear line of sight |
|                              | Network error   | Check network status  |
| Product can not be recharged | Defective USB battery charger                               | Try switching to another USB port   |
|                              | Insert the SleepAngles Monitor in the incorrect orientation | Make sure the charging leads align with the electrode probes in the USB battery charger                   |



## Product Specifications

| Items             | Description   |
|-------------------|---|
| Product Name      | SleepAngles Monitor RX501                               |
| Voltage           | 45mAh Lithium polymer battery                           |
| Recharging        | DC 5.0V, standard USB plug                              |
| Display           | 7 LED lights  |
| Angles            | Depending on service subscription (minimum four angles) |
| Time Stamp        | dd-mmm yyyy hh:mm:ss                                    |
| Battery grade     | 1-7 grade, division: 1 grade                            |
| Battery releasing | ≥500 times  |



|                                      |  |
|--------------------------------------|--|
| Battery life                         | 10 days per full charge                  |
| Transmission Power                   | 1mW                                      |
| Transmitting range                   | 30 meters (in open place)                |
| Dimension                            | 60x44.7x11.3mm                           |
| Working Condition                    | Temperature: 0~40℃ ; Humidity: ≤90% RH   |
| Storage and Transportation Condition | Temperature: -20~60℃ ; Humidity: ≤90% RH |



## FCC Statements

The user is cautioned that changes or modifications not expressly approved by the party responsible for compliance could void the user's authority to operate the equipment.

This device complies with Part 15 of the FCC Rules. Operation is subject to the following two conditions: (1) this device may not cause harmful interference, and (2) this device must accept any interference received, including interference that may cause undesired operation.

NOTE: This equipment has been tested and found to comply with the limits for a Class B digital device, pursuant to Part 15 of the FCC Rules. These limits are designed to provide reasonable protection against harmful interference in a residential installation. This equipment generates, uses and can radiate radio frequency energy and, if not installed and used in accordance with the instructions, may cause harmful interference to radio communications. However, there is no guarantee that interference will not occur in a particular installation.

If this equipment does cause harmful interference to radio or television reception, which can be determined by turning the equipment off and on, the user is encouraged to try to correct the interference by one or more of the following measures:

- Reorient or relocate the receiving antenna.
- Increase the separation between the equipment and receiver.
- Connect the equipment into an outlet on a circuit different from that to which the receiver is connected.
- Consult the dealer or an experienced radio/TV technician for help.



## IC Statement

---

This device complies with Industry Canada licence-exempt RSS standard(s). Operation is subject to the following two conditions:

- (1) this device may not cause interference, and
- (2) this device must accept any interference, including interference that may cause undesired operation of the device.

Le présent appareil est conforme aux CNR d'Industrie Canada applicables aux appareils radio exempts. L'exploitation est autorisée aux deux conditions suivantes :

- (1) l'appareil ne doit pas produire de brouillage, et
- (2) l'utilisateur de l'appareil doit accepter tout brouillage radioélectrique subi, même si le brouillage est susceptible d'en compromettre le fonctionnement.

**ReFlex Wireless Inc.**  
1400 - 1055 West Hastings Street,  
Vancouver British Columbia  
Canada V6E 2E9  
email : [support@reflexwireless.com](mailto:support@reflexwireless.com)  
tel : +1 (778) 331-3436