

Exhibit F: Internal Photos

FCC ID: P6I-COPYCAM

Photo 1 Shows the main circuit board with the Bluetooth radio module clearly shown where it is attached to the end of the coaxial cable with the SMA connector on the end, which is the antenna mount.

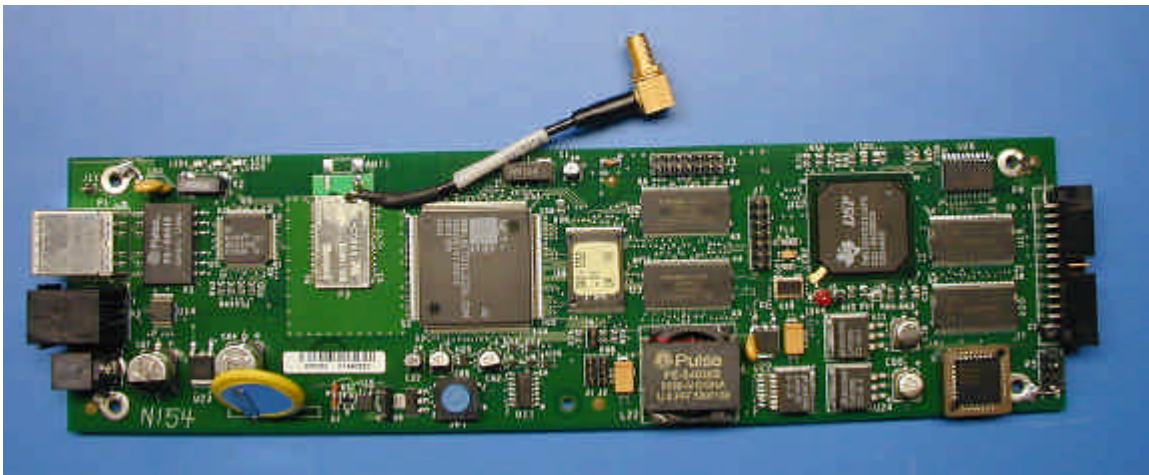


Photo 1

Photo 2 is the bottom side view of the main board.

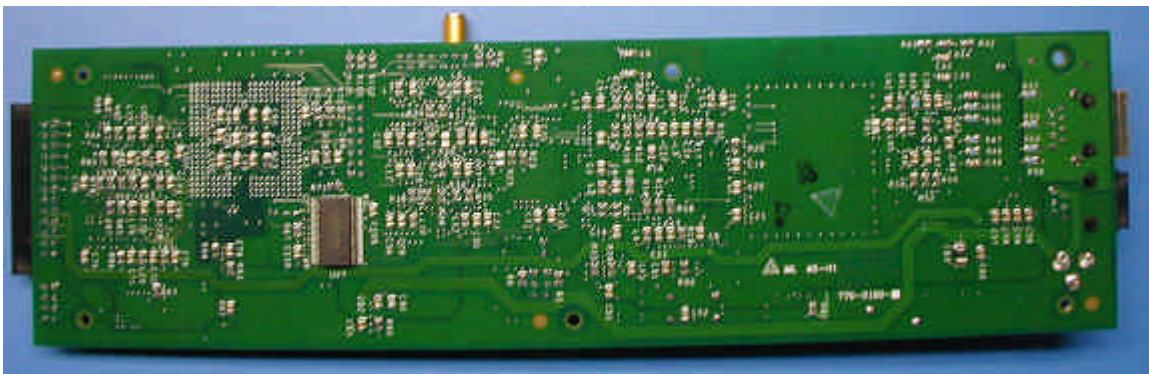


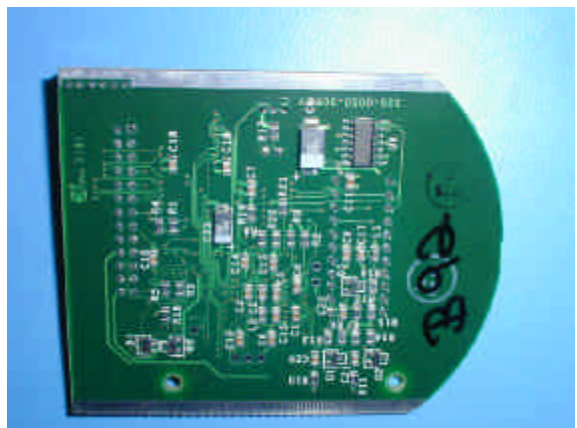
Photo 2

Photos 3 & 4 show the scanner board front (Photo 3) and back side (Photo 4).

Photo 3



Photo 4



Photos 5 & 6 show the front and back side of the controller board assembly.

Photo 5 is the front side:

Photo 5

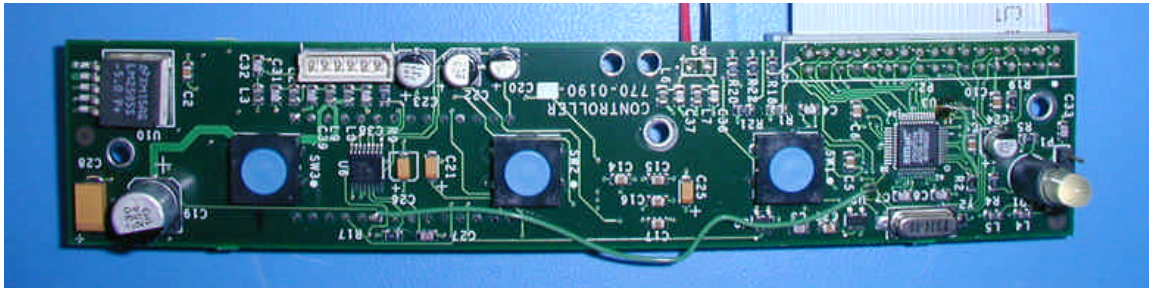
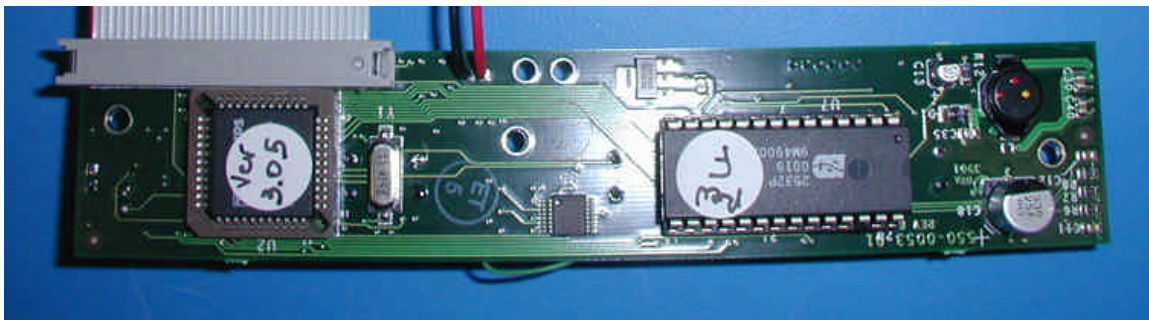
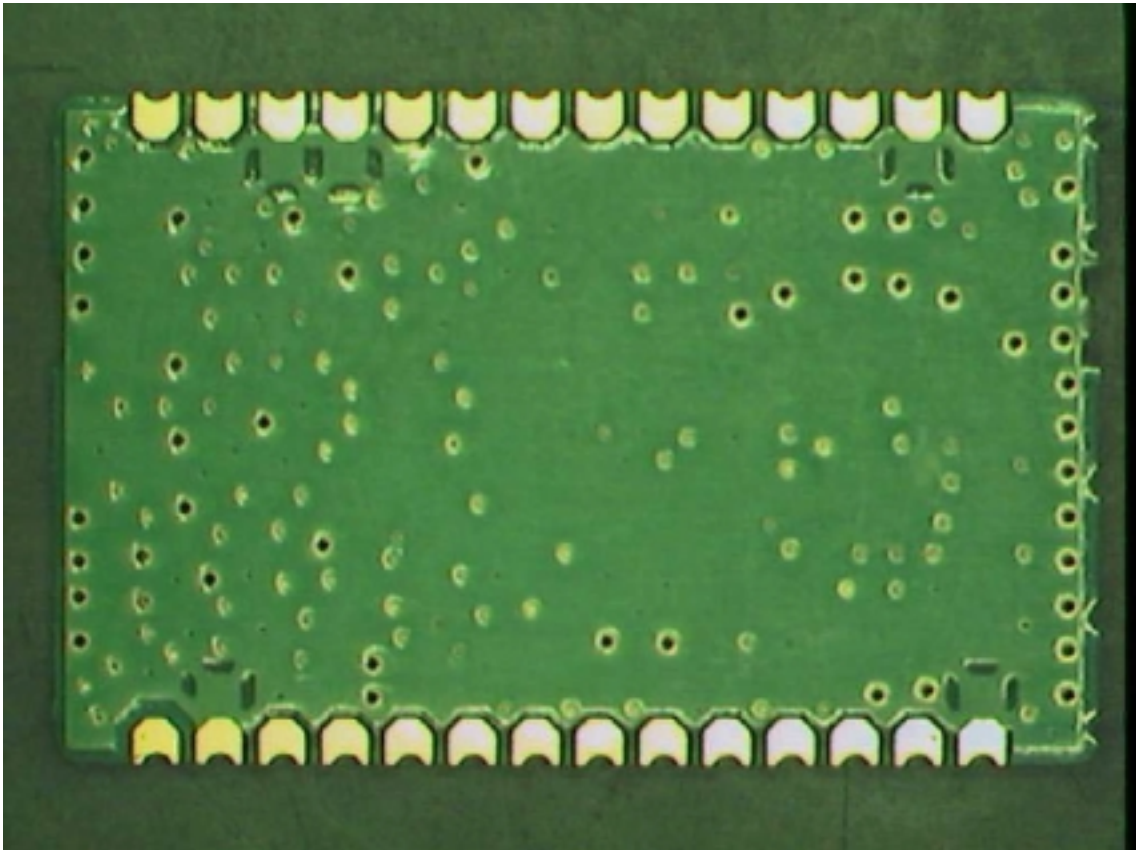


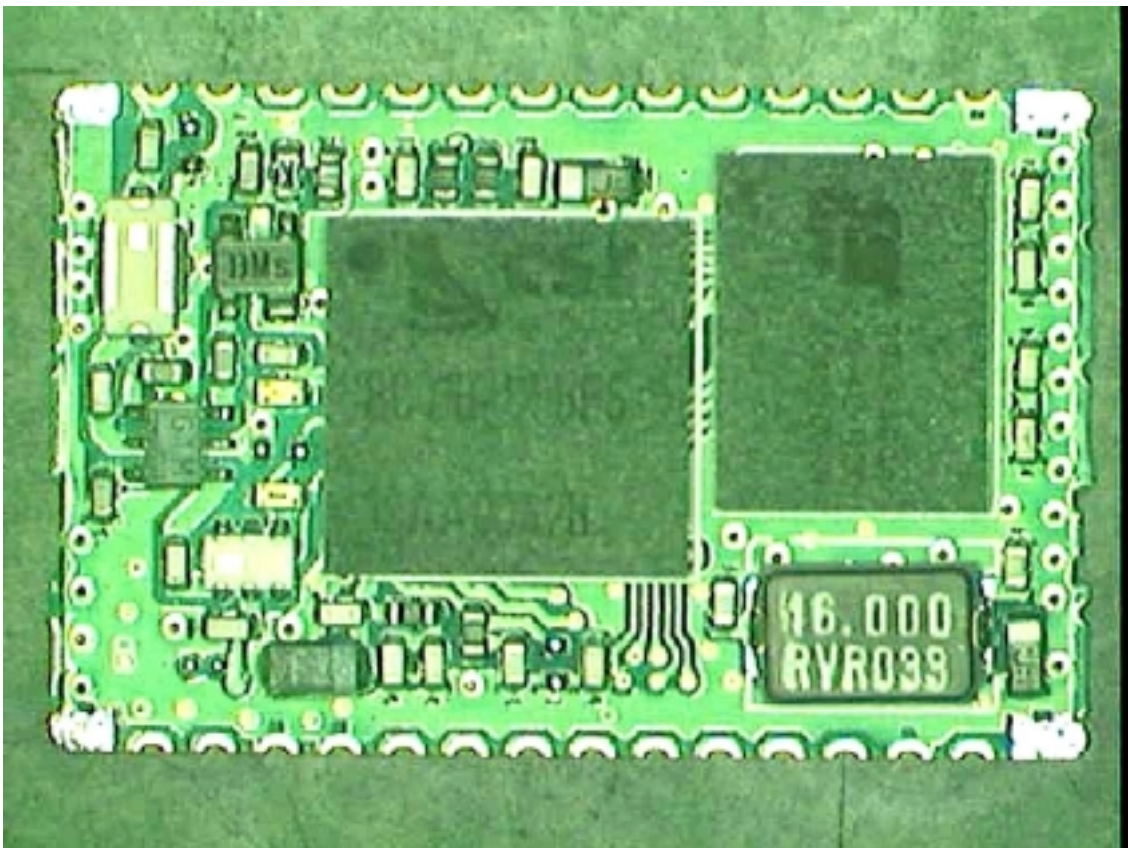
Photo 6 is the back side:

Photo 6





PCB buttom



PCB top