

PRELIMINARY
CONFIDENTIAL

M184

Mobile Asset Tracker Tag User Manual



Contents

- M184 Mobile Asset Tag - 5 -
- Introduction - 5 -
- Hardware and Accessories - 5 -
- Environmental Conditions - 5 -
- Tag Installation - 5 -
- Getting Started - 7 -
 - M184 Configuration for CenterScape - 7 -
 - Adding a Tag Group for the M184 - 7 -
- Warranty and Service i
 - Limited Standard Warranty Terms i
 - Standard Warranty Limitations i
 - Obtaining Service & Support i
 - RF Code Customer Support ii

Copyright Statement

M184 User Manual REV 01

Copyright © 2008-2020 RF Code, Inc. All Rights Reserved.

This document, the hardware, and the firmware described therein are furnished under license and may only be used or copied in accordance with the terms of such license. The information in these pages are furnished for informational use only, is subject to change without notice, and should not be construed as a commitment by RF Code, Inc. RF Code assumes no responsibility or liability for any errors or inaccuracies that may appear in these pages.

Information in this document is provided solely to enable system and software users to use RF Code products. RF Code reserves the right to make changes without further notice to any products herein. RF Code makes no warranty, representation, or guarantee regarding the suitability of its products for any particular purpose, nor does RF Code assume any liability arising out of the application or use of any product, and specifically disclaims any and all liability, including without limitation consequential or incidental damages.

The user of this system is cautioned that any changes or modifications to this system, not expressly approved by RF Code, Inc., could void the warranty. Every effort has been made to supply complete and accurate information. However, RF Code assumes no responsibility for its use, or for any infringements of patents or other rights of third parties, which would result.

RF Code, Inc.
9229 Waterford Centre Blvd.
Suite 500
Austin, TX 78758
www.rfcode.com

Regulatory Compliance

FCC Compliance

This device complies with part 15 of the FCC Rules. Operation is subject to the following condition:

(1) This device may not cause harmful interference.

This equipment has been tested and found to comply with the limits for a Class A digital device, pursuant to part 15 of the FCC Rules. These limits are designed to provide reasonable protection against harmful interference when the equipment is operated in a commercial environment. This equipment generates, uses, and can radiate radio frequency energy and, if not installed and used in accordance with the instruction manual, may cause harmful interference to radio communications. Operation of this equipment in a residential area is likely to cause harmful interference in which case the user will be required to correct the interference at his own expense.

CE Compliance

This is a Class A, CE Marked product. In a domestic environment, this product may cause radio interference, in which case the user may be required to take adequate measures. This equipment complies with a set of essential requirements relating to electromagnetic compatibility, health and safety, and radio spectrum set forth in the following articles:

RED 2014/53/EU Article 3.1(a): Health and Safety

RED 2014/53/EU Article 3.1(b): Electromagnetic Compatibility

RED 2014/53/EU Article 3.2: Radio Spectrum

These are essential protection requirements of DIRECTIVE 2014/53/EU of the European Parliament and of the council on the harmonization of the laws of the Member States relating to the making available on the market of radio equipment and repealing Directive 1999/5/EC.

WEEE Compliance

Do Not Dispose Product with Municipal Waste. Special Collection/Disposal Required.

M184 Mobile Asset Tag

Introduction

M184 is a 433.92 MHz Mobile Asset Tracking tag with an integrated motion sensor, used primarily for tracking laptops, tablets and other electronic equipment.

Hardware and Accessories

The M184 is a single unit in low profile plastic enclosure. M184 should be mounted to equipment using the self-

Environmental Conditions

The M184 tag is approved for use within the temperature ranges set forth below.

- **Operation:** -4 to +158 degrees Fahrenheit (-20 to +70 degrees Celsius)
- **Storage:** -40 to +176 degrees Fahrenheit (-40 to +80 degrees Celsius)

Tag Installation

Ideally the M184 tag should be located close to one corner of the equipment. Where possible the tag should face up when the equipment is in its normal position.

To install, remove the self-adhesive liner and firmly press the M184 tag to the surface. M184 may be mounted on plastic or metal surfaces.



Other tag considerations are:

- Sensor tag transmissions, signal propagation, and read-range are diminished when sensor tags are mounted very close to the ground.
- Care should be taken when mounting sensor tags near metal racks, rails, or conveyor belts.
- Sensor tag performance is diminished near water; signals are not propagated through water.

Getting Started

M184 continuously beacons the unique identifier printed on the product label. In order to improve the device discovery by the M250 Readers and CenterScape, it is important to add the Tag Group in CenterScape prior to hardware installation. See [Adding a Tag Group for the](#) .

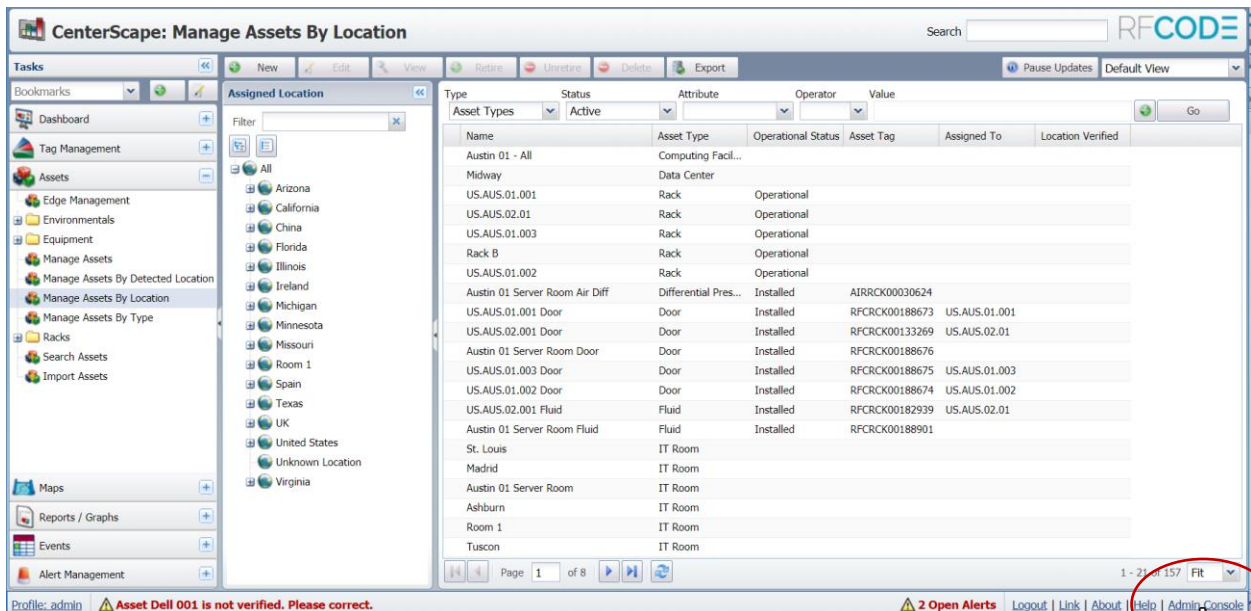
M184 Configuration for CenterScape

Before the M184 devices can start tracking asset location, some CenterScape configuration must be completed. In order to improve the device discovery, it is important to add the tag group in CenterScape prior to hardware installation.

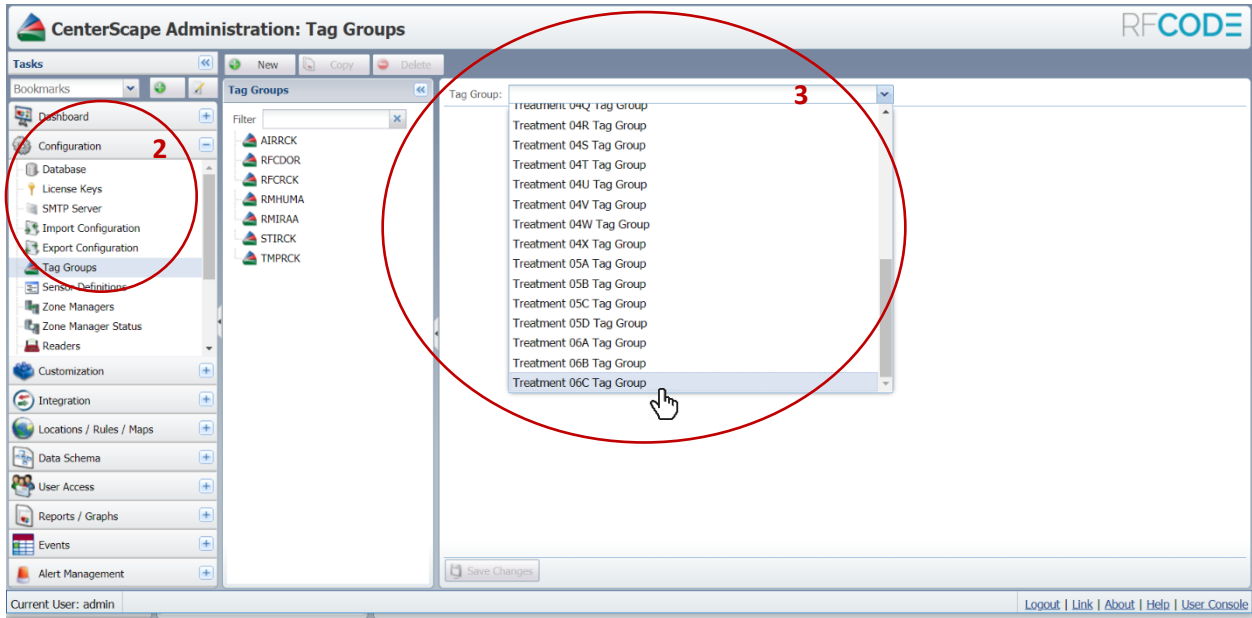
Adding a Tag Group for the M184

The M184 requires a new Tag Group entry to be added and configured in CenterScape prior to discovery by the M250 Readers. The M184 uses Treatment Code 05 and Group Code BOBCAT. To add the Tag Group entry, follow these steps. In order to perform this action, it requires CenterScape revision 1.3.

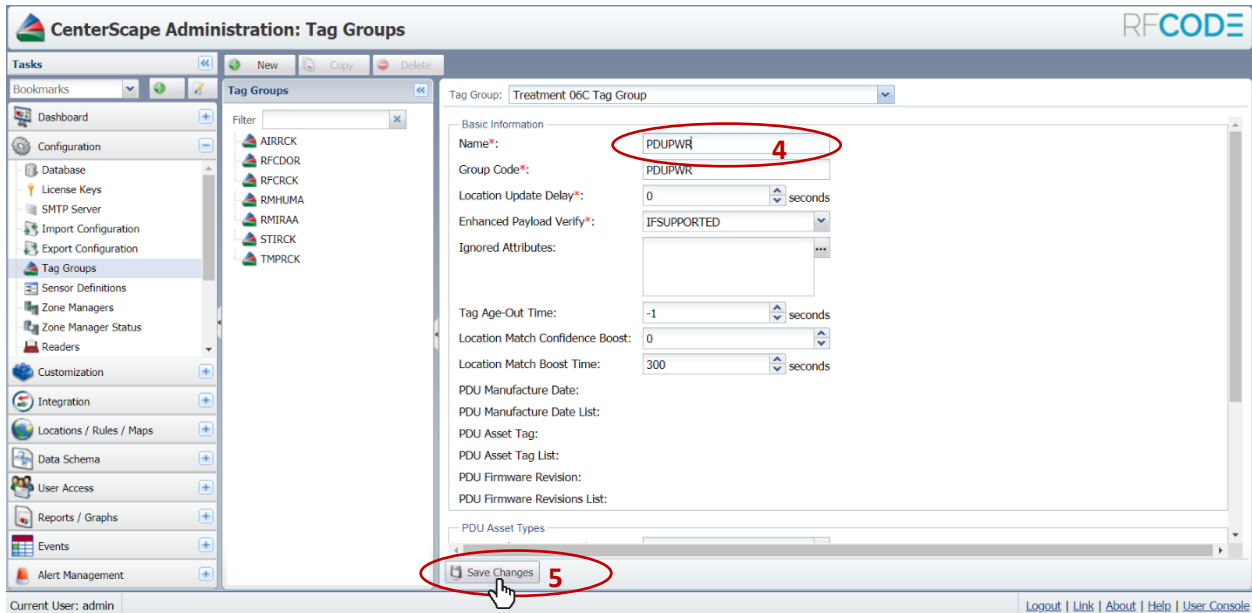
1. Login to CenterScape and navigate to the administrator console by clicking on the “Admin Console”



2. In the “Tasks” pane (left side), click on “Configuration” and select “Tag Groups”.
3. Add a new tag group by selecting “Treatment Code 05 Tag Group” from the drop-down menu under “Tag Group:” in the main window.



4. A Tag Group form will appear with information to be entered. In “Basic Information” add a “Name” for the tag group.



5. Click “Save Changes”. A new “Tag Group”, BOBCAT has been successfully created and will be displayed in the “Tag Groups” pane.

Appendix

Warranty and Service

Limited Standard Warranty Terms

RF Code warrants its products to be free from defects in materials and workmanship for a period of 1 year (12 months) for hardware and software from the date of purchase from RF Code. Its obligation under this warranty is limited to repairing or replacing, at its own sole option, any such defective products. This warranty does not apply to equipment that has been damaged by accident, negligence, or misapplication or has been altered or modified in any way. This warranty applies only to the original purchaser (end-user) and is not transferable.

Standard Warranty Limitations

Except as provided herein, the entire liability of RF Code and its suppliers under this limited warranty will be that RF Code will use reasonable efforts to repair or replace, without charge, all defective Products returned to RF Code by a Customer, all as more particularly described in the End User Warranty. Except for the express warranties stated herein, RF Code makes no other representations or warranties and RF Code hereby disclaims, all other warranties, express, implied, statutory, or otherwise, including without limitation, any warranty of merchantability, noninfringement of third party intellectual property rights, fitness for a particular purpose, performance, satisfactory quality, or arising from a course of dealing, usage or trade practice.

Obtaining Service & Support

For in-warranty service, customers have several options. Customers having difficulty with RF Code products should attempt to solve those problems through RF Code's Technical Support Problem Escalation Process:

First, contact the RF Code representative or other distributor from whom the RF Code product was purchased for information on how to obtain local support.

Second, contact the RF Code Customer Support via e-mail.

Third, contact the RF Code Customer Support via the Support Line.

For product returns, the support engineer will give you a return material authorization (RMA) number. No returns will be accepted without an RMA number. If the warranty expired, there is a charge for repair or



replacement per RF Code’s out-of-warranty policy. For full details of the RF Code RMA policy, please review the “RF Code Warranty, RMA, and Extended Warranty Policy” document.

RF Code Customer Support

RF Code Customer Support gives entitled customers and partners the ability to contact RF Code about installation and usage-related questions as well as make defect inquiries about eligible products that are covered under RF Code warranty agreements. A team of technical specialists can be contacted electronically or via phone.

The Support Line is available to provide General Support during normal business hours: Monday through Friday, 8:00 a.m. to 5:00 p.m. Central time, excluding national holidays.

Online Resources: support.rfcode.com

E-mail: support@rfcode.com

Voice: 512.439.2244 or toll-free at 866.830.4578

FCC Statement

This equipment has been tested and found to comply with the limits for a Class B digital device, pursuant to part 15 of the FCC Rules. These limits are designed to provide reasonable protection against harmful interference in a residential installation.

This equipment generates, uses and can radiate radio frequency energy and, if not installed and used in accordance with the instructions, may cause harmful interference to radio communications. However, there is no guarantee that interference will not occur in a particular installation. If this equipment does cause harmful interference to radio or television reception, which can be determined by turning the equipment off and on, the user is encouraged to try to correct the interference by one or more of the following measures:

- Reorient or relocate the receiving antenna.
- Increase the separation between the equipment and receiver.
- Connect the equipment into an outlet on a circuit different from that to which the receiver is connected.
- Consult the dealer or an experienced radio/TV technician for help.

The device can be used in portable exposure condition without restriction.