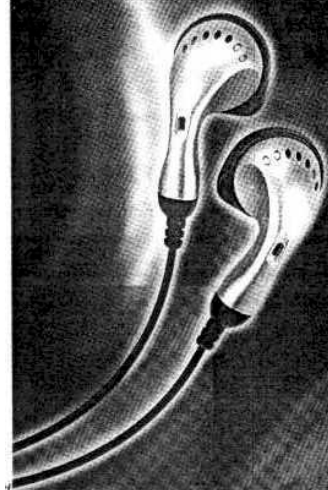


Jungle *i*

MASTERPIECE OF MP3

User's Manual

WORLD SLIMMEST 8.7mm



Jungle *i*

MASTERPIECE OF MP3

Contents

1. Check points before using the system	3
1-1. Check points on the package	3
1-2. Check points on your PC	3
1-3. Name of each part	3
1-4. About the power supply	4
1-5. Charge time and operation time	4
1-6. Connection of Junglei Player to your PC	5
2. Installation of the software	5
2-1. Installation of USB driver	5
2-2. Installation of Junglei Manager	6
2-3. Installation of ADPCM wave driver	7
3. Use of Junglei Manager software	8
3-1. Opening Junglei Manager	8
3-2. About Junglei Manager	8
4. Operation of Junglei Player	11
4-1. About the display window	11
4-2. Operation of Junglei Player	11
4-3. Voice playback	13
4-4. Voice recording	13
4-5. Editor functions of PCM files	14
4-6. Repetitive playback of a section	14
5. Operation of the remote control on the earphones	15
6. Others	15
6-1. Warnings	16
6-2. Any trouble?	16
6-3. Warranty	17

1. Before using the system

Thank you very much for purchasing our MP3 Player Junglei. You are asked to read the User's Manual carefully and study the performance and major functions of the system before using it. Please keep the User's Manual for future reference.

1-1. Check points on the package

The following parts are provided in the package of this product. If any part is missing, please refer to the distributor you bought the system from. However, availability of the option items depends on the distributor.

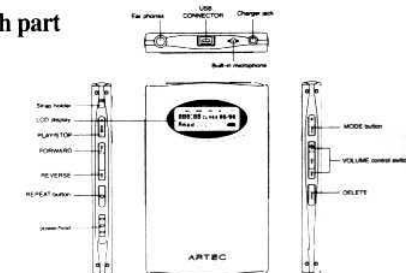


1-2. Check points on your PC

The PC to be connected to this player should have the following minimum specifications.

- Microsoft Windows 98/ME/2000
- Pentium 166 MHz CPU
- USB (Universal Serial Bus) port
- CD-ROM drive
- 10 MB free space on the hard disk and 32 MB RAM
- Sound card and a set of speakers

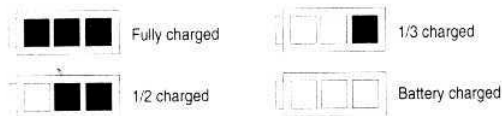
1-3. Name of each part



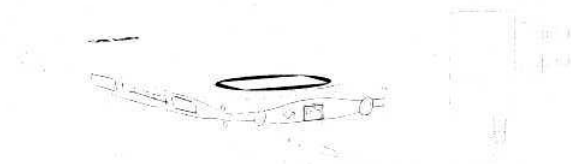
1-4. About the power supply

Junglei has a built-in rechargeable lithium ion battery and thus relieves the user from the burden of replacing batteries.

To check the charge condition, power up the player and observe the icon in the shape of a battery on the LCD display window. Make sure to charge the battery fully after purchasing the system as soon as possible.



The battery can be recharged by use of the AC/DC adaptor provided in the package. Once the battery is fully charged, disconnect the AC/DC adaptor from the Junglei player and keep it separately.



1-5. Charge time and operation time

When totally drained, the rechargeable battery in the Junglei Player is charged up to 90% after an hour and fully charged after 1.5 to 2 hours. The charge time will vary to some extent depending on the remaining energy in the battery.

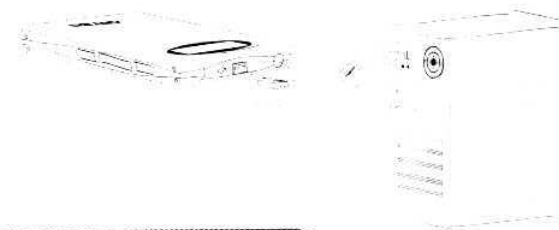
As the built-in rechargeable lithium ion battery does not have memory effect, it is not necessary to charge the battery only after it is totally drained.

1-6. Connection of Junglei Player to your PC

For successful installation, it is a must that the Junglei Player is connected to your PC via the USB (Universal Serial Bus) cable.

(Nota bene) The square-shaped end of the cable should be connected to the USB

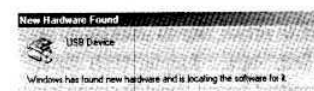
(Universal Serial Bus) port on the Junglei Player and the rectangular shaped end to the USB port on the PC.



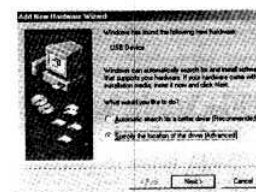
2. Installation of the software

In order to connect the Junglei Player to the PC and get MP3 files downloaded, you should install the software programs and connect the cable. Follow the steps shown in the pictures below, and the programs will be installed properly.

2-1. Installation of USB driver

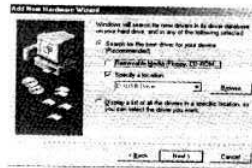


(1) 'Add New Hardware Wizard' will appear as follows when you connect the USB cable to the MP3 Player and turn on the power.



(2) Click 'Next' and a window asking you to search for a driver will show up. Select 'Search for the best driver for your device' and click 'Next'.

Read the message on the screen and select the following item to pick the driver you want. Click 'Next'.



(3) A window asking you for the location of the folder will show up. Select 'CD-ROM drive' and click 'Next'.



(4) The selected driver will appear. Keep clicking 'Next'.



(5) A window stating 'Hardware and Software Installation Complete' will appear. Click 'Finish' and installation is complete now.

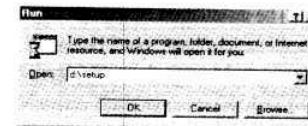


(6) If the USB (Universal Serial Bus) has been successfully installed, 'Artex Junglei USB Driver' will appear in Computer/Control Panel/System/Device Manager/Universal Serial Bus Controller as shown in the picture.

(Note) If you disconnect the USB cable from the MP3 Player, this item will disappear.

2-2. Installation of Junglei Manager

- (1) Insert the installation CD in the CD-ROM drive.
- (2) In the Windows 'Start' menu click 'Run'.



'SETUP.EXE' is the installation file of Junglei Manager software. Click 'OK' button and installation of Junglei Manager software will begin.

(3) In 'Start Setup' window, click 'Next' button.

(4) If you wish to change directories, select the item with 'Search' button in the Junglei Manager file. Click 'Next' button and installation will continue.

(5) By clicking 'Previous' button you can alter setup information. Click 'Next' button and the files necessary for the setup directory will be copied.

(6) Wait until all the files necessary for Junglei Manager are copied.

(7) Click 'Close' button and installation of Junglei Manager software is now complete.

(8) The item of Junglei Manager is created as 'Start/Programs/Junglei Menu' and the icon titled 'Junglei' appears in the Windows Desktop.



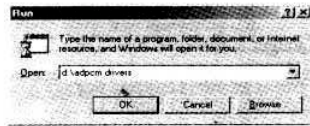
(9) You can run Junglei Manager by selecting Junglei item in 'Start/Programs/Junglei Menu', Junglei item in the Windows Desktop, or Junglei icon in the Windows Desktop.

2-3. Installation of ADPCM wave driver

If Junglei Manager has been installed successfully as explained above, it is not necessary to install ADPCM wave driver. ADPCM driver is intended for those users who wish to play voice recorded wave files only, without installing Junglei Manager software. If you want to send an voice wave file to a person who does not have Junglei Manager, it is a must to have ADPCM wave driver installed, and it is possible to convert a file recorded by a Junglei Player to a wave file and play it.

(1) Insert the installation CD into the CD-ROM drive. The installation file for the driver is in 'D:\ADPCM driver' folder.

(2) Click 'Run' in the Windows 'Start' menu.



'ADPCM Driver.exe' is the installation file of ADPCM driver. As shown in the picture above, enter 'D:\adpcm drivers\adpcm driver.exe' and click 'OK' button. (Do not forget putting quotation marks '\ '). Then installation of ADPCM driver software will begin.

3. Use of Junglei Manager software

3-1. Opening Junglei Manager



You can run Junglei Manager by double clicking Junglei icon or select the same program in the Windows menu.

3-2. About Junglei Manager



When you run Junglei Manager, a window as shown below pops up. The function of each part is as follows.

1. Connect button

Checks if the cable is connected properly between the PC and the player.

2. File Download button

Select a file in Junglei Manager window (on the left hand side), and push the download

arrow mark button.

'Drag and Drop' function

Select a file in Junglei Manager window (on the left hand side), and drag it to Junglei Manager flash memory window (on the right hand side).

3. File Upload button

Select a file in Junglei Manager window and push the upload arrow mark button.

(Note) For prevention of illegal copy of MP3 files, upload of a MP3 file to a PC is prohibited. However, it is possible to upload data files and voice files.

In order to copy a data file or upload a PCM file (voice recorded file) to the PC:

'Drag and Drop' button

Select a file in the flash memory window and drag it the folder you want in the local display window of Junglei Manager window (on the left hand side).

4. Open Wave Editor dialog box



Upload a voice recorded file to the PC.



5. Send Mail

You can email a voice recorded file. The procedure is as follows.

1) Upload a voice recorded file from the player to the PC.



2) When you select the voice file on the PC, an voice file email icon will show up. Select this icon.



3) A message on conversion of an voice file to a general wave file will appear. Click 'OK' and the file will be converted.



When Voice File Email dialog box shows up, enter the email address of the recipient and send the file by clicking 'Transmit' button. In case no SMTP server has been installed on the PC, the converted voice file will not be transmitted and the voice file email function stops.

6. Rename MP3 File

It is possible to create a new folder under the folder that has been selected in the local display panel.

7. Delete File

If you wish to delete a file or files, select the file or files and use 'Delete' key on the keyboard or click 'Delete' button on Junglei Manager.

8 - 9. Move Next/Previous

Select a file you wish to move and select 'Move Next' button. Then the file will be relocated to the upper list. Selection of 'Move Previous' button will relocate the file to the lower list.

10. Refresh Player

In the event the information of the files in the player is changed, you can update the information by pushing 'Refresh Player' button.

11. Initialize Player Memory

In case Junglei Manager does not recognize Junglei Player or the version of Junglei Manager is updated for the first time, initialize the flash memory.

12. Key

By use of 'Key' button, it is possible to operate Junglei Player on Junglei Manager.

13. Player Version

14. Exit Program

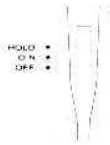
4. Operation of Junglei Player

4-1. About the display window



4-2. Operation of Junglei Player

Power on and off



Moving the power switch to 'On' position will turn on the player and moving the power switch to 'Off' position will turn it off. (Moving the switch to 'HOLD' position will disable all the switches of Jungle! Player so that any unexpected operation of the player can be prevented.)

MP3 music playback



1) Repeat pushing 'MODE' button until 'MP3' appears on the display window.



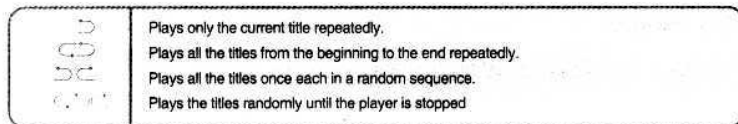
2) Push 'PLAY/STOP' button and the player will play back until it is stopped as long as there exists one or more titles of music.



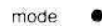
3) Select the title you wish to play by use of FORWARD/REVERSE button.



4) Select one of the modes among Normal, Repeat, Repeat all and Shuffle by pushing 'REPEAT' button repeatedly.



5) Pushing 'PLAY/STOP' button once again will put the player to 'Pause'.



(Note) Every time 'MODE' button is pushed while the player is playing, 'EQ Mode' changes to the next option. Select the equalizer mode you want among Normal, Classical, Jazz and Rock.

Current information state

In 'Pause' mode while no MP3 or voice file is played back, pushing 'REPEAT' button will bring the current information state on the display window.

- 'T Flash xxx MB' : xxx is the total built-in flash memory.
- 'A Flash xxx MB' : xxx is the free space of the built-in flash memory.
- 'Genre xxxxxx' : xxxxxx is for the genre of the MP3 title among Normal, Classic, Jazz and Pop.
- 'Version xxxxx' : xxxxx displays the version of the program currently built in.

4-3. Voice playback

1) How to select a voice recorded file



Select a voice recorded file by use of 'FORWARD/REVERSE' buttons and the track number, the total play time and the name of the voice recorded file will show up.

2) How to start playback

Push 'PLAY/STOP' button and the player will play back until 'PLAY/STOP' button is pushed again as long as there exists one or more titles of music.

3) How to stop playback



Push 'PLAY/STOP' button once again while the player is playing to stop playback. If you wish to delete the voice recorded file, you can do so by pushing 'DELETE' button.

4-4. Voice recording



1) Push 'RECORD' button and the player will start recording shortly. At this time the file name is created automatically.

2) How to stop recording

Push 'RECORD' button once again while recording. Recording is stopped and the file is saved automatically. The file name saved in Jungle! Player is 'Voice File --' and -- is the smallest number which is not currently saved, assigned automatically.

4-5. Editor functions of PCM files

1. Open : Opens the PCM file to be edited in the dialog box.
2. Save : Saves the PCM file that has been edited.
3. Play, I((II,)I : Playback, stop, beginning and end of the file of the open file.
4. From, To : Sets the beginning and the end of the section to be cut.

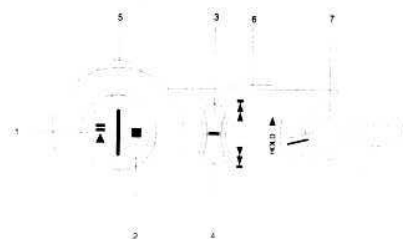
Open the file to be edited, set the section you want by dragging 'Stop' or 'Slider' while playing back, and save the file.

4-6. Repetitive playback of a section

Set the section while playing back by use of 'DELETE' button and the system will perform repetitive playback automatically. (If 'DELETE' button is pushed once again during repetitive playback, repetitive playback is cancelled.)

DELETE button	Repetitive operation of A-B section
1. First click	Sets the beginning of A-B section repetition.
2. Next click	Sets the end of A-B section repetition, and starts repetitive playback of the section.
3. Next click	Stops playback of A-B section repetition.

5. Operation of the remote control on the earphones



1. PLAY/PAUSE button

In MP3 or voice playback mode, a push of this button will pause playback. In the

paused state, a push of this button will resume playback at the position where playback was paused.

2. STOP button

Stops playback while in MP3 or voice playback mode.

3. FORWARD button

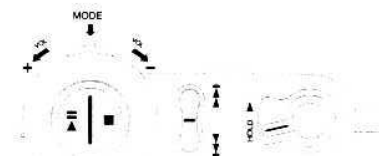
Moves to next title while in MP3 or voice playback mode.

4. REVERSE button

Moves to previous title while in MP3 or voice playback mode.

5. JOG SHUTTLE button

Adjusts volume level and function modes
MP3 mode Voice mode Voice recording mode



6. ERASE button

Deletes MP3 or voice recorded file, or works as the repetition section setting button in playback mode.

7. HOLD button

Disables the buttons on the front of the remote earphones

6. Others

6-1. Warnings

1) Warning about shocks

This product may get seriously damaged if it is dropped or subject to a shock.

In particular, do not carry the product in your hip pocket.

2) Warning about storage

Do not operate or keep this product in a place where humidity or temperature is excessively high. In particular, do not keep the product in a humid bath room or in an automobile under the direct sun light.

3) Warning about chemical substances

If you clean the product with a chemical substance, the surface of the case may discolor or get damaged. Clean it with a sheet of soft cloth.

4) Inquiries for other problems

Please connect to our home page:

<http://www.jungle-i.com/>

6-2. Any trouble?

The product does not operate.

- Check if 'HOLD' button has been set.
- Check if memory is in a proper state. Initialize the player by use of Junglei Manager.

File download does not work.

- Check the condition of connection between the PC and the player. Check if the USB (Universal Serial Bus) cable and USB driver have been correctly installed.
- Check the free space of the memory.
- Try to initialize the player by use of Junglei Manager.

Data have been damaged or lost.

- In case data have been damaged due to unstable power source during download, initialize the player by use of Junglei Manager.
- In preparation for possible damage to data, back up the data in your hard drive, CD-ROM or ZIP diskette.

The player that operated okay is not recognized.

- In case Junglei Manager fails to recognize the player that operated okay, initialize Junglei Player by pushing 'Initialize' button. Also check if USB driver was correctly initialized.

WARRANTY

Model

Serial No.

Owner's name :

Address :

Dealer's name :

Date of purchase :

Dealer's address :

Warranty Period

ARTEC CORPORATION LTD. hereinafter called ARTEC, warrants this product against any defect in material and workmanship for one(1) year from the date of purchase by the original retail purchaser. According to the following terms this ARTEC product will be repaired without charge of labor and materials by the authorized ARTEC service stations, by the authorized ARTEC dealers and/or their authorized service stations. ARTEC, the authorized ARTEC service stations, the authorized ARTEC dealers and/or their authorized service stations may decide whether the defective product will be repaired or replaced as a whole or partially.

What is Covered and What is Not Covered.

Except as specified below, this warranty covers any defects in materials and workmanship of this product. The following are not covered by the warranty:

1. Damage to or deterioration of the external cabinet.
2. Any unit that has been altered or on which the serial number has been defaced, modified, or removed.
3. Damage, deterioration or malfunction resulting from:
 - (a) accident, misuse, abuse or neglect;
 - (b) failure to follow instructions supplied with the product;
 - (c) any shipment of the product. Any damage arising of transportation is the liability of the freight company. Any damage arising of transportation and any implicit and explicit risks are the liability of the freight company. This is expressly not a liability of ARTEC;
 - (d) repair attempted repair by anyone not authorized by ARTEC to repair this product;

- (e) causes other than product defects, including lack of technical skill, competence or experience of the user. Especially damages which may arise of incidental use respectively by improper ventilation.
- (f) Damages caused by improper or incorrect installation of software.
- (g) Periodic check-ups.
- (h) Maintenance respectively repair of parts due to normal wear and tear,
- (i) Adoptions or adjustments to the product in order to conform to different national technical or safety standards of any country other than the one for which the product was originally designed and manufactured.

Who May Enforce the Warranty

This warranty may be enforced only by the original retail purchaser.

What We Will Pay For

We will pay all labor and material expenses for items covered by the warranty. Payment of shipping and insurance charge is discussed in the next section on this warranty.

How You Can Get Warranty Service

1. If your unit needs service during the warranty period, please contact the local authorized distributor for this product. If you are unable to locate such a distributor, please contact your ARTEC facility at the address indicated below.

2. After identifying the nearest authorized service station for this product the product or any parts believed to be defective must be shipped freight and insurance prepaid to such service station, together with a copy of this warranty certificate and a copy of your sales receipt, showing the date of purchase. Please ensure to fill out the warranty certificate correctly (do not forget the serial number of the product). ARTEC reserves the right to refuse the guarantee service if the documents are missing or incomplete in the understanding of this terms.

If the necessary repairs are covered by the warranty, and if you have sent the product or parts of it to the nearest authorized service station, the return freight and insurance charges will be prepaid.

Please do not return your unit to the ARTEC factory without out prior authorization

MASTERPIECE OF MP3 Jungle i

Limitations of Liability and Exclusion of Implied Warranties

Unless considered unenforceable or unlawful under the applicable notional law:

1. ARTEC's liability for any defective product is limited to repair or replacement of the product, at ARTEC's option and the option on authorized service stations, authorized dealers and their authorized service stations. No one is authorized to assume any greater liability on ARTEC's behalf. ARTEC shall not be liable for any damage to any other properties independent of their virtual or real nature especially there is no liability for any damage to any kind of software and/or any kind of databases caused by ARTEC products.

Furthermore ARTEC is not liable for damages arising out of loss of use, loss of revenue or profits, or any other damages, weather incidental, consequential, or otherwise.

2. All implied warranties or conditions, including but not limited to warranties or conditions of merchantability and fitness for a particular purpose, hereby are excluded.

These warranty terms do not affect any statutory rights of consumers, which were granted by the respective national laws.

INFORMATION TO THE USER

This equipment has been tested and found to comply with the limits for a Class B digital device, pursuant to part 15 of the FCC Rules. These limits are designed to provide reasonable protection against harmful interference in a residential installation. This equipment generates, uses and can radiate radio frequency energy and, if not installed and used in accordance with the instructions, may cause harmful interference to radio communications. However, there is no guarantee that interference will not occur in a particular installation. If this equipment does cause harmful interference to radio or television reception, which can be determined by turning the equipment off and on, the user is encouraged to try to correct the interference by one more of the following measures:

- Reorient or relocate the receiving antenna.
- Increase the separation between the equipment and receiver.
- Connect the equipment into an outlet on a circuit different from that to which the receiver is connected.
- Consult the dealer or an experienced radio/TV technician for help.

WARNING

Changes or modifications not expressly approved by the manufacturer could void the user's authority to operate the equipment.