

## Cautions & Warnings !

*Reader antennas should be positioned so that personnel in the area for prolonged periods may safely remain at least 23 cm (9 in) in an uncontrolled environment from the antenna's surface. See FCC OET Bulletin 56 "Hazards of radio frequency and electromagnetic fields" and Bulletin 65 "Human exposure to radio frequency electromagnetic fields."*

*You **MUST** connect both antennas **BEFORE** completing the power connections to the reader.*

## System Requirements

To operate the Nanoscanner reader and the Alien RFID Gateway demo software you will need the following:

- PC running Windows® 98 or higher, with minimum 200 MHz speed, 127 MB RAM.
- Minimum of 45 MB of available disk space.
- One available serial port.
- CD-ROM drive.
- Display/monitor set to at least 256 colors.
- 120 VAC standard power outlet (2).

### Alien Technology Corp.

18220 Butterfield Blvd.  
Morgan Hill, CA 95037  
Tel 408-782-3900  
Fax 408-782-3910



[www.alientechnology.com](http://www.alientechnology.com)

ALIEN TECHNOLOGY

# NANOSCANNER READER

**(2450MHz Battery System)**

## QUICK INSTALLATION GUIDE



## Nanoscanner Reader Hardware

1. Situate the PC, reader and antenna on a tabletop near two 120VAC outlets.

**CAUTION:** Set up the reader antennas so they are at least 9 inches away from the nearest person who will be in range of the RF signal for prolonged periods. (See full FCC caution on back page.)

**NOTE:** When you are not actively using the reader for demonstration or programming purposes, we recommend you pull the power connector out of the reader to prevent unnecessary transmission of RF energy.

2. Connect the RS-232 cable to the reader.
3. Connect the RS-232 cable to the serial port on the PC.
4. Connect both antennas to the antenna ports on the nanoscanner.  
Screw the fitting from the cable end onto the reader connector until finger tight to secure the cable to the reader.

**CAUTION:** You MUST connect both antennas BEFORE completing the power connections to the reader.

5. Connect the power supply to the reader.
6. Plug power cord into power supply.
7. Plug the power supply cable into the wall outlet and verify power.  
The green LED will be illuminated when power is on.

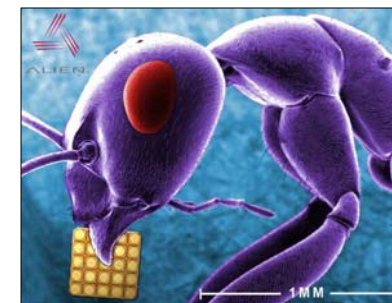
**NOTE:** When you are not actively using the reader, we recommend you pull the power connector out of the reader to prevent unnecessary transmission of RF energy.

8. Plug in the PC (if necessary) and turn it on.
10. Launch the desired host software application (such as the Alien RFID Gateway).

## Alien RFID Gateway Demonstration Software

### Quick Software Installation

1. Quit all applications/programs currently running on your PC (except Windows Explorer).
2. Make sure your display monitor is set for at least 256-bit color.
3. Place the Alien CD in your CD drive.
4. The CD will automatically launch the installation application.
5. Click on the “Install Demonstration Software...” label to start the installation.
6. Follow the on-screen instructions, clicking “Next” to move to the next step
7. At the “Install Finished” screen, click “Finish”
8. To launch the Alien RFID Gateway software, double-click on its icon (located directly on the desktop, and under *Start / Programs / Alien RFID Gateway / Alien RFID Gateway*)



Ant with Alien 350 micron NanoBlock™ IC.