

Cautions & Warnings!

Reader antennas should be positioned so that personnel in the area for prolonged periods may safely remain at least 23 cm (9 in) in an uncontrolled environment from the antenna's surface. See FCC OET Bulletin 56 "Hazards of radio frequency and electromagnetic fields" and Bulletin 65 "Human exposure to radio frequency electromagnetic fields."

System Requirements

To operate the reader and the Alien RFID Gateway demo software you will need the following:

- PC running Windows® 98 or higher, with minimum 200 MHz speed, and 128 MB RAM
- Minimum of 45 MB of available disk space
- Ethernet connectivity
- CD-ROM drive
- 120/220 VAC standard power outlet

Alien Technology Corp.

18220 Butterfield Blvd.
Morgan Hill, CA 95037
Tel 408-782-3900
Fax 408-782-3910



<http://www.alientechnology.com>
8102092-000 Rev A

ALIEN TECHNOLOGY®

QUICK INSTALLATION GUIDE

ALR-9650

December 2007



Quick Hardware Installation

1. Place the PC, reader, and secondary antenna (if used) on a tabletop near an AC outlet.

CAUTION: Set up the reader and antenna so they are at least 9 inches away from the any person who will be in range of the RF signal for prolonged periods. (See full FCC caution on back page.)

NOTE: When you are not actively using the reader, we recommend deactivating the reader to prevent unnecessary transmission of RF energy.

2. Connect the straight-through Ethernet cable from the reader to the Power over Ethernet (PoE) "LAN+DC" power supply connector.
3. Connect a second straight-through Ethernet cable from the PoE supply "LAN" connector to a nearby LAN drop or network switch.
4. Connect an Ethernet cable to the LAN port on the PC from a nearby LAN drop or network switch.

Alternatively, for direct connections to a laptop or PC (vs. to a LAN switch), connect a cross-over Ethernet cable from the PoE "LAN" connector to the laptop or PC.

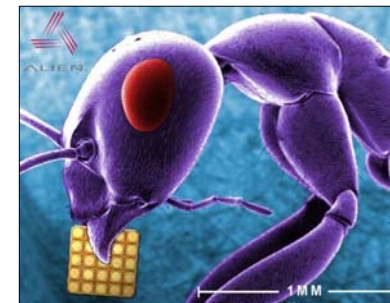
5. Connect the secondary antenna coaxial cables (if used) to the auxiliary antenna port. Only antennae listed in the ALR – 9650 Hardware Setup Guide may be connected to the auxiliary antenna port.

Screw the fitting from the cable end onto the reader connector *clockwise* until finger tight to secure the cable to the reader.

6. Plug the AC power cord into the PoE power supply.
7. Plug the AC power cord into the wall outlet and verify power. The green LED will be illuminated when power is on.
8. Plug in the PC (if necessary) and turn it on.
10. Launch the desired host software application (such as the Alien RFID Gateway).

Quick Software Installation

1. Quit all applications/programs currently running on your PC (except Windows Explorer).
2. Place the Alien CD in your CD drive.
3. The CD will automatically launch the installation application.
4. Follow the on-screen instructions, clicking "Next" to move to the next step.
5. At the "Install Finished" screen, click "Finish".
6. To launch the Alien RFID Gateway software, double-click on its icon (located directly on the desktop, and under *Start / Programs / Alien RFID / Gateway / Alien RFID Gateway*).



Ant with Alien 350 micron NanoBlock™ IC.