

User's Guide



Alien Technology Corporation

Disclaimer

Alien is registered trade mark of Alien Technology Corporation

is registered trade mark of Alien Technology Corporation

All other trademarks and trade names referred to herein are property of their respective owners.

Microsoft Windows®, Windows® 2000, Windows® CE .NET, Windows® NT, and Windows® XP are registered trademarks of Microsoft Corporation.

FCC Information to User

This equipment has been tested and found to comply with the limits for a Class B digital device, pursuant to Part 15 of the FCC Rules. These limits are designed to provide reasonable protection against harmful interference in a residential installation. This equipment generates, uses and can radiate radio frequency energy and, if not installed and used in accordance with the instructions, may cause harmful interference to radio communications. However, there is no guarantee that interference will not occur in a particular installation. If this equipment does cause harmful interference to radio or television reception, which can be determined by turning the equipment off and on, the user is encouraged to try to correct the interference by one of the following measures:

- Reorient or relocate the receiving antenna.
- Increase the separation between the equipment and receiver.
- Connect the equipment into an outlet on a circuit different from that to which the receiver is connected.
- Consult the dealer or an experienced radio/TV technician for help.

Caution

Modifications not expressly approved by the party responsible for compliance could void the user's authority to operate the equipment.

FCC Compliance Information : This device complies with Part 15 of the FCC Rules.

Operation is subject to the following two conditions: (1) This device may not cause harmful interference, and (2) this device must accept any interference received, including interference that may cause undesired operation

IMPORTANT NOTE:

FCC RF EXPOSURE INFORMATION

Read this information before using your PDA

In August 1996 the Federal Communications Commission (FCC) of the United States with its action in Report and Order FCC 96-326 adopted an updated safety standard for human exposure to radiofrequency (RF) electromagnetic energy emitted by FCC regulated transmitters. Those guidelines are consistent with the safety standard previously set by both U.S. and international standards bodies. The design of PDA complies with the FCC guidelines and these international standards. Use only the supplied or an approved antenna. Unauthorized antennas, modifications, or attachments could impair call quality, damaged your "ALH-9001", or result in violation of FCC regulations. Do not use the PDA with a damaged antenna. If a damaged antenna comes into contact with the skin, a minor burn may result. Please contact your local dealer for replacement antenna.

Table of Contents

Copyright and Agreement.....	5
Chapter1. Caution when using	6
1. How to use the battery correctly	6
2. Caution when using.....	6
Chapter2. Products compositions.....	7
1. Package components.....	7
2. Name of Each Part.....	8
3. Function of Each Part.....	9
Chapter3. Basic Functions	9
1. Power and Battery.....	9
1.1 Switch On Backup Battery	10
1.2 Detaching and Attaching Main Battery.....	10
1.3 Charging.....	11
1.4 Power On and Off.....	12
1.5 Checking Battery Gauge.....	14
1.6 Backup Battery	15
1.7 Dispose of Battery	15
2. System Reset.....	16
2.1 Soft Reset.....	16
2.2 Hard Reset.....	16
2.3 Initializing System.....	17
3. Using Micro SD, SIM, SAM Card	19
3.1 Installing Micro SD	19
3.2 Installing SIM Card and SAM Card	20
4. System Settings	21
4.1 Setting Brightness	21
4.2 Screen Calibration	21
4.3 Setting Volume and Sounds.....	22
4.4 Setting Data and Time	22
5. Using keypad	24
5.1 Using keypad.....	24
5.2 Inputting Data	24
5.3 Using <Fun> Button.....	25
6. Using stylus	25
7. Using ActiveSync Program	26
7.1 Installing Microsoft ActiveSync Program.....	26
7.2 Connecting PC to PDA	27
7.3 Transmitting Data	28
8. Firmware Upgrade	30
Chapter4. Optional Module	
1. Using 1D or 2D Barcode Scanner.....	31
1.1 Scanning Barcode	31
1.2 Setting Barcode Emulator.....	31
1.3 Setting Barcode Symbology	34
1.4 Barcode Scanning Beam Position.....	35

2. Using Wireless LAN	37
2.1 Connecting to Wlan	37
2.2 Setting Wlan Manually	37
2.3 Checking WLAN Information	38
3. Bluetooth	39
3.1 Connecting Bluetooth Printer (SPP).....	39
4. Using GPS	41
4.1 Executing GPS Demo Program	41
5. Using Camera	42
5.1 Using Camera	42
Chapter5. Appendix	43
Configuration	43

Copyright and Agreement

- This manual is subject to copyright protection along with all relevant rights.
- No part of this document or the procedures described therein can be copied, reproduced, changed, translated or transmitted in any form or by any means without prior written permission of Alien Technology Corporation. or its wholly owned subsidiaries.
- Alien Technology Corporation reserves the right to change any contents of this manual at anytime without prior notice.
- There are maybe some differences between the contents of this manual and the actual behavior of product.

This manual is written for the person who is responsible for installing, configuring, and maintaining the PDA. Read and follow all warnings and cautions in this document before you handle and operate Alien equipment

Safety Information

Read and follow all warnings and cautions in this manual before you handle and operate Alien equipment. If you do not follow the safety warnings and cautions, you might be seriously injured, and the equipment and data are also might be damaged.

Warnings!

A warning requires you must pay attention to the operating procedures, practices, conditions, and statements strictly, or might be injured seriously.

Cautions

A caution alerts you that you must be observe strictly when you operating procedure, practicing, configuring, for preventing from damage and destruction of equipment, and loss of data.

Note

A note provides you the information which you must needs while you using



Chapter1. Caution when using

Before you handle and operate your device, Please read through and familiar with the contents of this manual.

1. How to use the battery correctly

- When you dropped the main body or battery in water, please do not put it on the stove or heater for drying. Just keep it in natural temperature or contact with purchase place.
- Please do not take the metal object to approach to the terminal of battery
- If you do not use the battery for a long time after charging, please keep it at room temperature.
- According to the life of battery and the processing time of its using, the buffering time can be shortened. In this case, please contact your dealer.
- You have to charging the device with the provided adaptor from factory.

2. Caution when using

- User careless or products repair might damage the stored data. Manufacture is not responsible for this damage, so important data should be kept separately
- If you has problem, do not try to repair or disassemble the product arbitrarily, please contact customer service center.
- Do not use your where have electromagnetic wave or the risk may occur such as hospital, plane so on.
- A high temperature or high humidity environment will causes trouble, Please note that.
- Please do not using other sharp object to touch the screen, otherwise it might be get damaged or not working properly.
- Please be careful not to touch the metal paper cutting saw tooth, so as not to get injured
- If smell odors, occurs smoke or noise during use product, immediately disconnect the charger and off the power, then Please contact with customer service center
- If you have any other questions during use, please contact the customer service center

Chapter2. Products compositions

mobile computer is a small, ergonomically designed PDA, which built on the Microsoft window CE 5.0 Operating System. The PDA could equip with Barcode Scanner, RFID Tag Reader, MSR Card Reader, Printer, Smart Card Reader, Wireless Modem, Camera and so on devices as optional items. Its various function applied to Industry, Enterprise, Logistics and so on, can be used extensively in many fields.

1. Package components

After opening the product packaging box, check the items listed as below:



1. ALH-9001 Body



2. Adaptor and AC Cable



3. Main Battery



4. USB Sync Cable



5. Protective FilmX



6. Stylus



7. Hand Strap

*If there is missing or defective products on the above, please contact the customer support center or your place of purchase.

2. Name of Each Part



3. Function of Each Part

Part	Descriptions
1D/2D Scanner Window (Option)	Laser beam emitted through this window. Please be careful the foreign substances and preventing from the damage. Warning! Do not look at the laser beam directly.
Reset Button	Enable you to perform a Warm Reset, Press <Power>button simultaneously, enable you to perform a Hard Reset.
Microphone	Enable you to conduct communication.
WLAN (Option) LED	Indicates WLAN power on-off status.
Battery Latch	Enable you to detaching and attaching the main battery.
Main Battery	Enable to supply the power to the product.
Volume Buttons	Enable you to press <Fun>button simultaneously to adjusting volume.
Scan Buttons (F7, F8)	Enable you to scan Barcode and RFID Tag.
Scan Buttons (F9)	Enable you to scan Barcode and RFID Tag.
Speaker	Build-in speaker, which could emit various sound effects.
Sync Cable Connector	Enable you to connect and send data to PC via USB sync cable.
Earphone Jack	Enable you to connect to earphone.
L/R Arrow Key	Enable you to move the cursor to left and right. And press <Fun>button simultaneously, could move the cursor to up and down.
Power LED	Power LED will be Red when the battery is charging, or will be green when it is charged completely.
Adaptor Connecting Jack	Enable you to connect to adaptor which provided from factory.
Camera Flash (Option)	Enable you to use flash while using camera.
Camera (Option)	Enable you to capture and store images.
Cradle Connector	Enable you to connect to PC or charging the battery while using cradle.
Key Pad	Enable you to input key value (number, alphabets, symbol), or executing assigned programs.
Touch Screen	Display running programs, and could execute, use, and exit programs via using stylus to touch the screen.
Hand Strap Hole	Enable you to attach a hand strap or a stylus for the convenience of using, while need to use the device for a long period time.

Chapter3. Basic Functions

1. Power and Battery

PDA battery is composed of main battery and backup battery. A main battery supplies the power to the system and RAM which could keep save the data. A backup battery could keep save the data of RAM when the main battery discharged completely.

Main Battery: 3.7V 3,000mA Lithium – ion

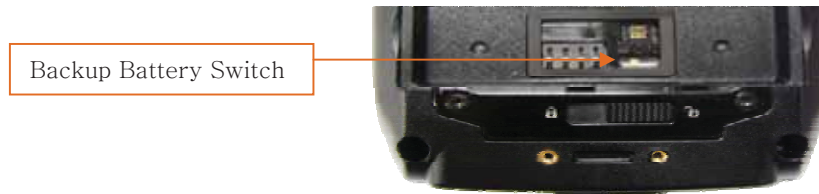
Backup Battery: 3.7V 105mA Lithium – polymer

- **Note:**

Switch on the backup battery at first beginning of using PDA, and then install the main battery, charge it completely.

1.1 Switch On Backup Battery

The image as blow shows the battery compartment, which already removed the main battery. Slide the lever to right to start to supplying power to the system.



To attaching main battery to the back battery compartment of the PDA.

To confirm the battery latch locked firmly.

“Refer to 1.2 Battery attaching and detaching”

Connecting adaptor to the PDA adaptor connecting jack, and check if the “Power LED” is Red, and then charging the power completely until it get into Green.

- **Note:**

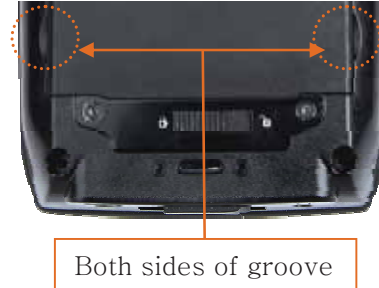
If the window wallpaper has shown on the screen, press the <power> button for a couple of seconds, so that could shorten the charging times.

1.2 Detaching and Attaching Main Battery

➤ **Detaching Battery**

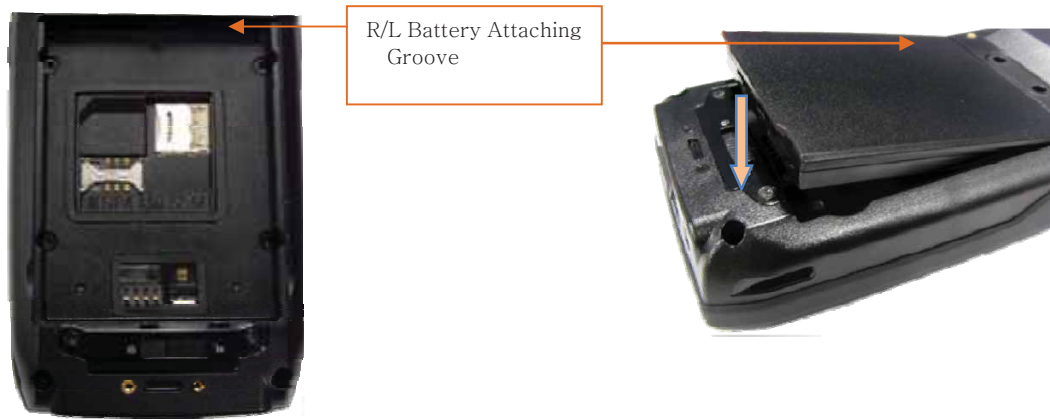
These images as below, shows the back bottom of the PDA.

Slide the battery latch to the right (UNLOCK side), and then lift the main battery out of the compartment along both sides of groove.



➤ **Attaching Battery**

Put the top part of battery into the upward groove, and then press down the bottom of battery into the battery compartment, slide battery latch to the left (LOCK side) to attach battery firmly.



1.3 **Charging**

You have to charge the battery via dedicated adapter, which provided from the factory. "Power LED" is **Red** while charging or is **Green** when charged completely.

➤ **Connecting Adapter**

1. Plug the adapter cable to 220V socket.
2. Connect adapter DC cable to the “Power connecting jack” of the main body.
3. “Power LED” is **Red** while charging.



⚠ **Caution:**

You must charge the battery by using dedicated adapter, which provided from factory, or your device might get damage.

1.4 Power On and Off

Press <Power> button one time, the device will enter low-Power mode (Sleep Mode) under the system is started and the following window is displayed on the desktop or other programs is running in the system. Press <Power> button once again could activate the system.



Taskbar: Display the currently running programs.

Start button: Activates the start menu and then execute a program.

➤ **Power On and Off via <Power> Button**



Power Button

Power Off:

1. When the system is in booting status, press <Power> button for a couple of seconds, then the backlight will be turned off and enter the low-power mode (sleep mode).
2. You can also press <Start Button> -> <Suspend> button to turn the device off.

Power On:

1. When the system power is in the off status, press <Power> button quickly, then backlight will be turned on and start the system.
2. Connect to the ActiveSync USB cable; the power will be turned on automatically.

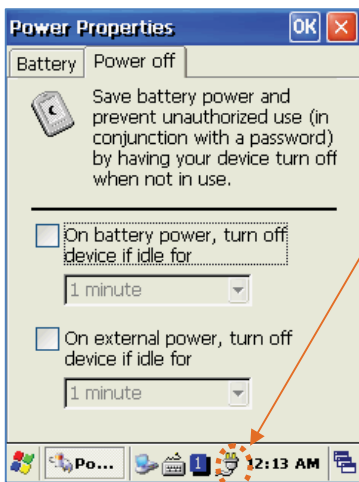
● **Note:**

Even though the power is in off state, if there was a tiny battery gauge remained, the data of RAM will be saved, and those programs which have been running for sometime before the power turned off, will be recover rapidly. If the main battery and backup battery are both in the discharge state, the RAM data will disappear, and the system will be starting if the power is charged again.

➤ **Power off automatically**

The device has been powered but has not been used for a period of time, then the system will enter low-power mode (sleep mode) automatically. You could set the sleep mode time at the power management so that could save power and prolog the battery life.

[Start Button] -> [Setting] -> [Control Panel] -> [Power Management] -> [Power Off]



Power Icon

- You can also double click <Power> Icon to enter this interface.
- You can also press the <Power> button to activate the system, when the device turned off cause get into the sleep mode.

➤ Battery Discharging

If the main battery discharge completely, the system will not turned on, the device will get into low-power mode (sleep mode) automatically, and even press the <Power> button, the system will not be turned on. In this case, you should charge the main battery or connect the adaptor to the adaptor connecting jack of main body, then press the <Power> button to turn on the system.

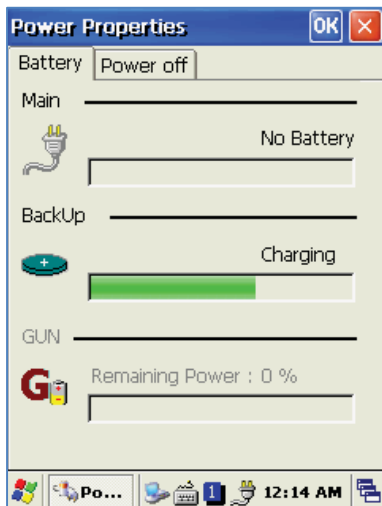
1.5 Checking Battery Gauge

- **Note:**

Battery life is largely affected from the user using method and surrounding environments. A 2200mA battery is usually needs 6 ~ 12 hours to get charged completely.

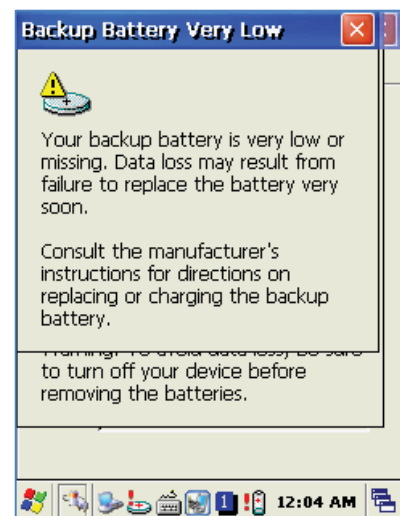
➤ Checking Battery Gauge

[Start Button] -> [Setting] -> [Control Panel] -> [Power Management] -> [Battery]



➤ Low Power Warning

If the remaining battery gauge cannot support the system running any more, a low power warning message window will be popped up on the screen. In this case, you need to press the <Power> button to turn off the power, and to charge the battery as soon as possible.



1.6 Backup Battery

A backup battery could safely keep the RAM data, even the main battery discharged completely.

 **Caution:**

If the main battery and the backup battery are both discharged, the RAM data will disappear. Among the running programs, the RAM data will disappear in which are using, and the system will not be restore to previous state, but rebooting system after start charging.

1.7 Dispose of Battery

You need to purchase a new one if the battery damaged or reached its end of life.

 **Warning!**

Please dispose the used batteries in a designated place.

2. System Reset

If there is no response from the system or an application is locked up and stops responding, and when you want to upgrade the firmware, reset the system is maybe necessary.

2.1 Soft Reset

When do you need to perform Soft Reset?

If there is no response for your command from the system, it calls (Hang-up). In this case, you need to perform a soft reset. Soft reset will end programs and the user memory region will be deleted, but installed programs and data, and so on, are not affected.

[Soft Reset Procedure]

Using the stylus pen to press <Reset> button briefly, the system will restarting again, after the screen turns off shortly.

[Soft Reset Result]

- System will be restarting.
- Operating System will be restarting (Windows CE).
- Desktop will appear in about ten seconds.
- User's changed registry information, copied files and Installed programs will be restored.

Power Button

Reset Button



2.2 Hard Reset

When do you need to perform Hard Reset?

Hard Reset, which is also called **Cold Reset**, enables to initialize hardware completely. User's installed programs, copied files and registry values will keep remained even performed Hard Reset, but the real time and date will be initialized. So you need to reset the time and date after performed Hard Reset.

You need perform Hard Reset when the Soft Reset cannot restore the system.

[Hard Reset Procedure]

Using stylus pen to Press <Power> Button and <Reset> Button simultaneously, the system will restarting again after the screen turns off shortly.

[Hard Reset Result]

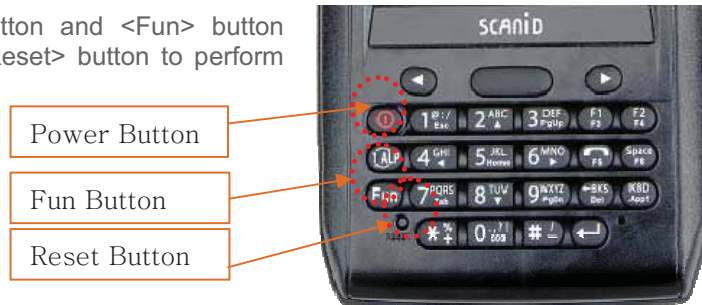
- System will be restarting.
- Operating System (Windows CE) will be loading and restarting.
- Desktop will appear in about ten seconds.
- Time and date window will be popped up and need to reset it.

2.3 Initializing System

Enter [Boot Menu] and do what you want, when in the situations as below:

1. When you need to restore the original registry information, which has been changed.
2. When you need to initialize “My device” storage spaces.
3. When you need to initialize “Flash Disk” storage spaces.
4. When you need to initialize system to factory default settings.

You can also press <Power> button and <Fun> button simultaneously, and then press <Reset> button to perform **Hard Reset**.



[Boot Menu] window would appear in a couple of seconds.

- ◆ **Warning!**
Except for [Clean System], please do not use other functions.
The system might be work not properly if you use other functions on the [Boot Menu].

[Boot Menu]
[System Information]
[Firmware Upgrade]
[Clean System]
[Configuration Setting]
[Exit Boot Menu]
Move : 2(Up)/8(Down)
Select : Enter

[Boot Menu] Start-up Screen

[Boot Menu]
[System Information]
[Firmware Upgrade]
[Clean System]
[Configuration Setting]
[Exit Boot Menu]
Move : 2(Up)/8(Down)
Select : Enter

Using<2^>, <8v> buttons to select Clean System, then press <Enter> button.

[Boot Menu]
[Clean System]
Clean Registry Clean OS Root Clean Flash Disk Factory Reset
Move : 2(Up)/8(Down)
Preview : <- BKS
Select : Enter

Using <2^>, <8v> button to select your need command.
Press <BKS> button to return to main menu.

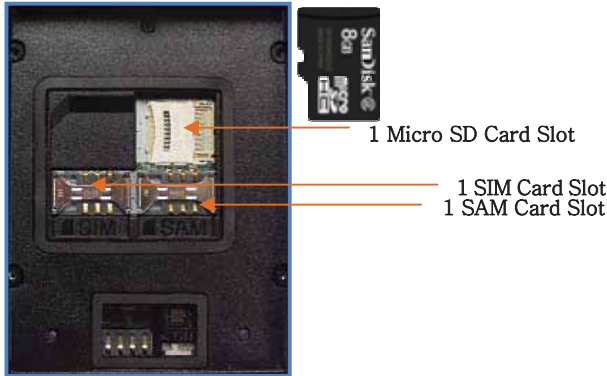
[Boot Menu]
[System Information]
[Firmware Upgrade]
[Clean System]
[Configuration Setting]
[Exit Boot Menu]
Move : 2(Up)/8(Down)
Select : Enter

Using <2^>, <8v> buttons to select [Exit Boot Menu], then press [Enter] button to exit [Boot Menu].

Clean Registry – Initializing registry.
Clean OS Root – Initializing “Mydevice” region.
Clean Flash Disk – Initializing “Flash Disk” region.
Factory Reset – Initializing to factory default settings.

3. Using Micro SD, SIM, SAM Card

The image as below is battery compartment of , and there are 1EA SIM Card Slot, 1EA SAM Card Slot and 1EA Micro SD Card Slot.



3.1 Installing Micro SD



Push the cover to the right along arrow direction to open it.



lift the cover up along arrow direction.

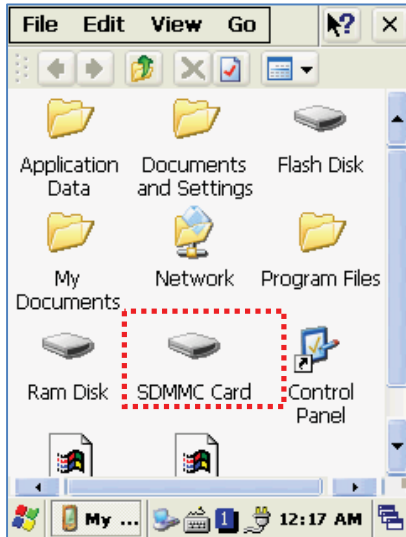


Put Micro SD card into Slot and press down the cover as arrow direction.



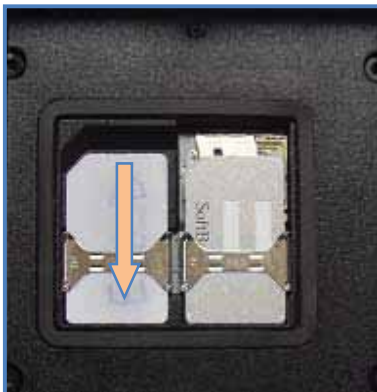
Push the cover up as arrow direction to lock it, and attach the main battery and turn on the power.

You can find the Micro SD Memory Card icon when executing the file explorer, after inserted the Micro SD card.



3.2 Installing SIM Card and SAM Card

SIM Card and SAM Card can easily insert and pull out along arrow direction.



4. System Settings

4.1 Setting Brightness

Brightness is already set 80% at the factory, and brightness is the biggest consume part of the power, so you might need to adjust it to your actual need.

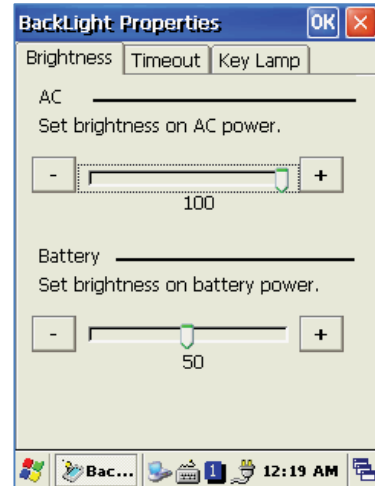
[Setting Brightness]

1. [Start Button] -> [Setting] -> [Control Panel] -> [Backlight]
2. [MyDevice] -> [Control Panel] -> [Brightness]

밝기: Enable you to adjust brightness.

끄기: Enable you to adjust the timing of turning off brightness.

키램프: Enable you to adjust the timing of turning off key lamp.

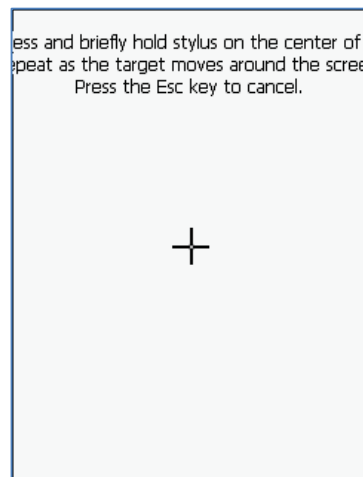
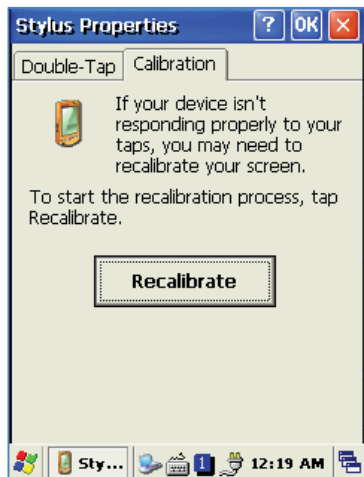


4.2 Screen Calibration

At first beginning of using the device after purchasing or need to use the device for a long period time, if you cannot select the place where you touched with stylus, you need to reset the coordinate calibration values.

Touch screen calibration

- [Start Button] -> [Setting] -> [Control Panel] -> [Stylus] -> [Calibration] -> [Recalibration]



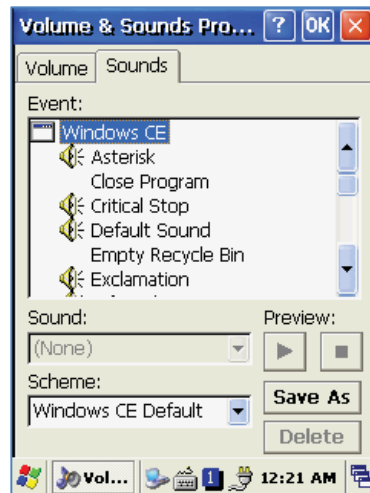
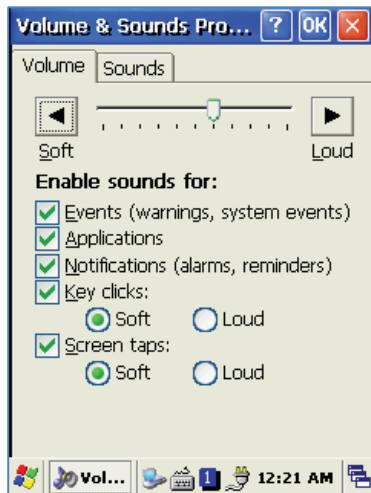
Press and hold stylus pen briefly on the center of cross symbol, and repeat 5 times as it moves around the screen. The screen counts 30 seconds after calibrating, and you can finish the recalibration to touch screen wherever you want, if you do not any action, the screen will automatically finish the recalibration of itself.

4.3 Setting Volume and Sounds

Volumes is already set 80% at the factory, and you can readjust you need volume at control panel ->"Volume and Sounds"

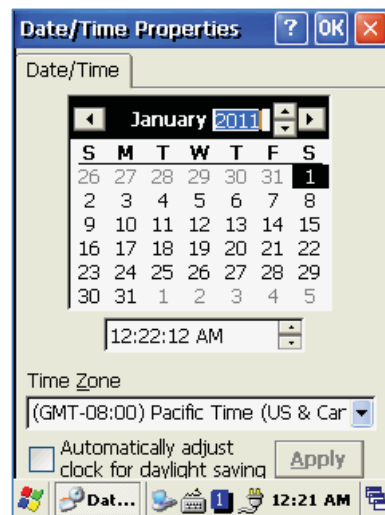
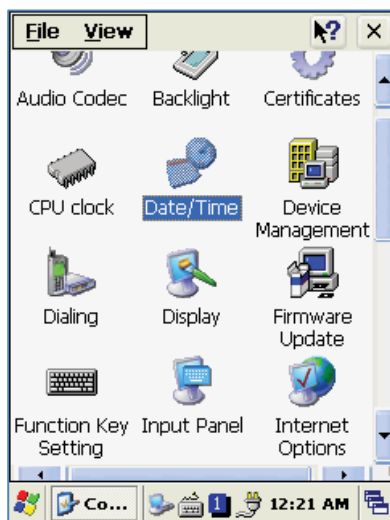
Setting Volume and Sounds

[Start Button] -> [Setting] -> [Control Panel] -> [Volume and Sounds]



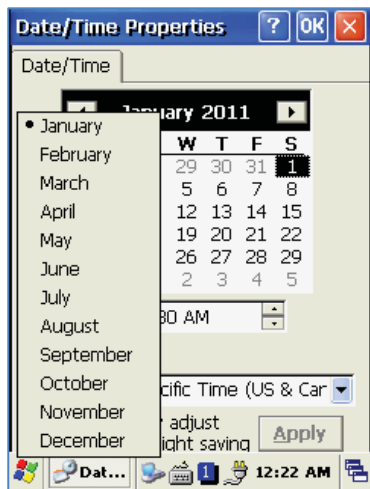
4.4 Setting Data and Time

[Start Button] -> [Setting] -> [Control Panel] -> [Date and Time]



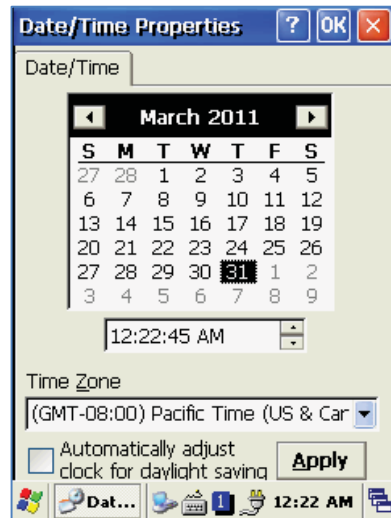
Setting Year:

Double Click the year, and click the up and down arrow button to set year.



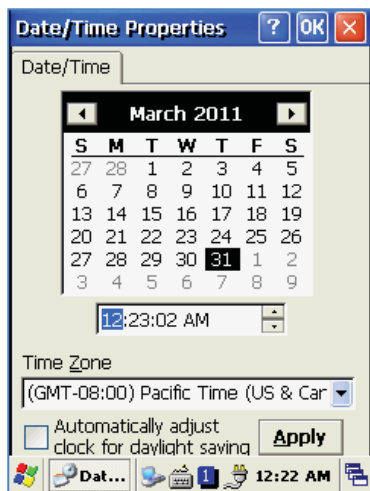
Setting Month:

Double Click the Month or Click L/R arrow button to set Month.



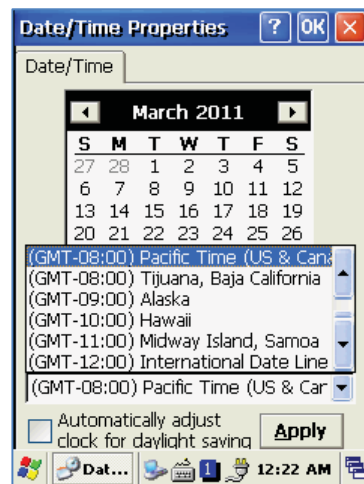
Setting Day:

Click the day directly to set day.



Setting Time:

Click AM/PM, Time area directly, using up and down arrow button to set Time.




Setting Time Zone:

Click up and down arrow direction to select time zone and click apply button.

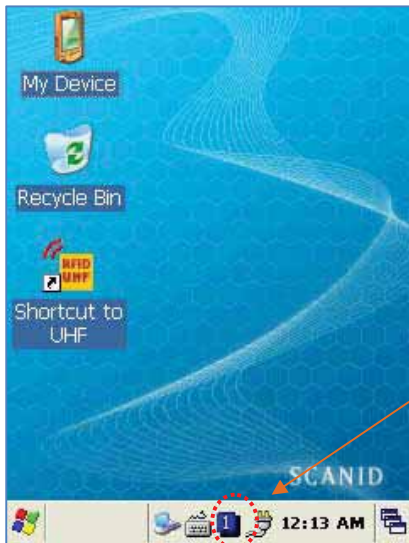
5. Using keypad

Keypad enables you to input numbers, alphabets and special symbols. And can also execute other set function with <Fun> button.

5.1 Using keypad


if you'd like to change the current input language, can press <1  ALP> button as below steps:


[Numeric] -> [Lowercase] -> [Uppercase]



Click the input language icon on the taskbar is also can change the input language.

5.2 Inputting Data

Numeric Keypad Mode: Press <1  ALP > button or keypad icon on the taskbar to change to the numeric mode and directly press number on the keypad.

Alphabet Keypad Mode: Press <1  ALP > button or keypad icon on the taskbar to change to the Lowercase or Uppercase and directly press alphabets or special symbols on the keypad. Each button has 2 ~ 3 letters or symbols. Press the button once, the first letter or symbol will be inputted, press twice continuously, then the second letter or symbol will be inputted, and the third letter or symbol need to press button three times continuously.

5.3 Using <Fun> Button

Press <Fun> button and other buttons simultaneously can activate functions as below:

Fun + button	Descriptions
<Esc>	Enable you to cancel the selected command or the programs operating or state.
Volume button <Up>, <Down>	Enable you to increase or decrease the sound.
<3>, <9>	Enable you to perform page Up or page Down.
<2>, <4>, <5>, <6>, <8>	Enable you to move the cursor to the L/R, UP/DOWN and HOME.
	Enable you to delete a letter which located after the cursor.
<7>	Enable it has Tab button function.
<*>, <0>, <#>	Enable you to input <+> <000> <-> symbols.
<F3>, <F4>	Enable you to use as like function buttons.

6. Using stylus

You can tie the stylus to the hand strap hole, so that enable you to use the stylus as like a mouse on a PC



Use Stylus to:

- Select a letter on the soft keypad.
- Select a program on the desktop or taskbar.
- Select button, zone or tab bar in a window box or program.

◆ **Caution:**

Please do not use sharp objects on the touch screen. Use only supplied stylus, otherwise would bring seriously damage to the touch screen.

7. Using ActiveSync Program

ActiveSync program could synchronize between the PC and PDA device, so that enable you to perform program installing, copy, transition, delete and so on operations.

7.1 Installing Microsoft ActiveSync Program

Download the latest version of ActiveSync program from Microsoft **Windows CE**. Website, and install it to your PC.

ActiveSync: Windows XP

Download Address: <http://www.microsoft.com/downloads/>.

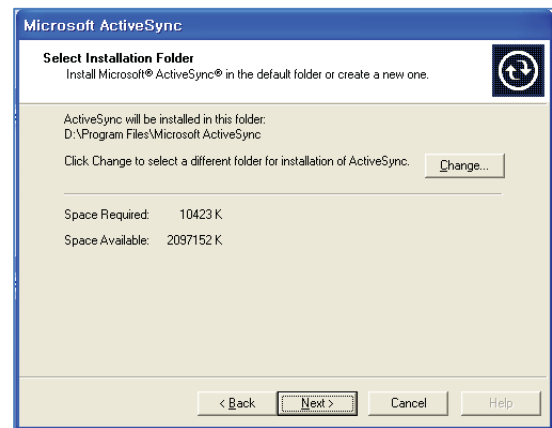


Caution:

You must use ActiveSync v3.7 version or above.



Click [Next] Button.



Designate installation folder, then click <Next> button.



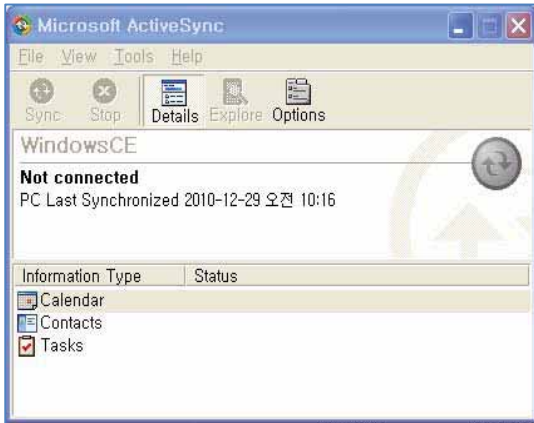
The installation was finished, and then uses the USB cable to connect to the USB port on the computer; ActiveSync will automatically detect the device connection.

7.2 Connecting PC to PDA

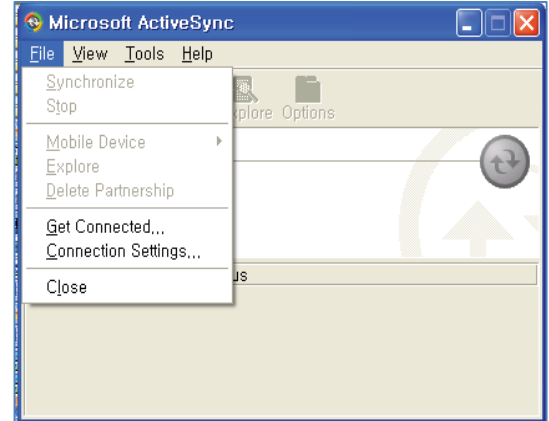
Setting PC

[Start button] -> [Programs] -> [Microsoft ActiveSync]

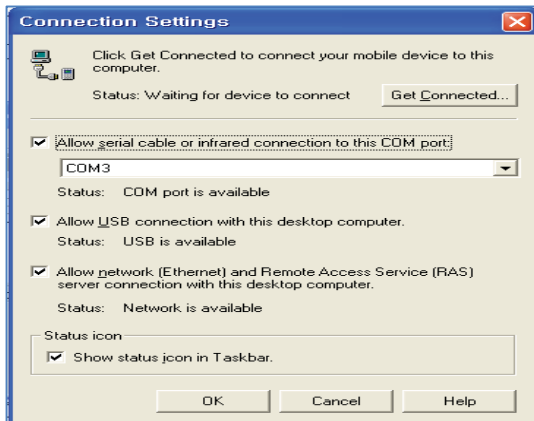
< Windows XP >



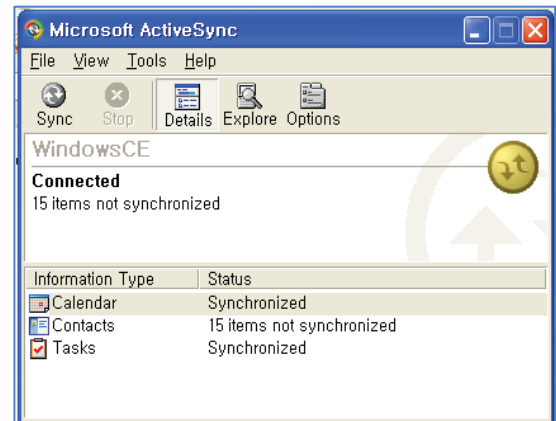
Executing Microsoft ActiveSync program



Click [File], Click [Get Connected].



Select <Allow USB connection with this desktop computer>, press OK button.



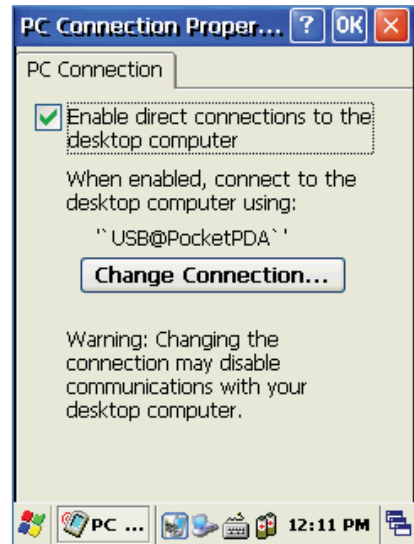
ActiveSync connected to PDA

Setting PDA

[Start Button] -> [Setting] -> [Control Panel] -> [PC Connection]



Double click PC Connection icon



To check if set to connected to USB Sync cable

7.3 Transmitting Data

Using the USB cable to connect PC and the device.



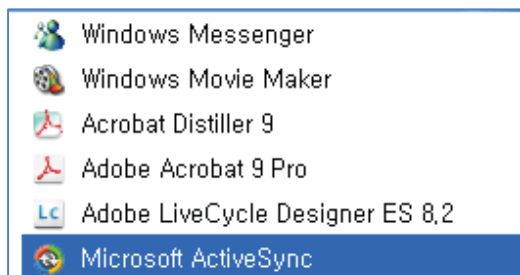
Connecting state



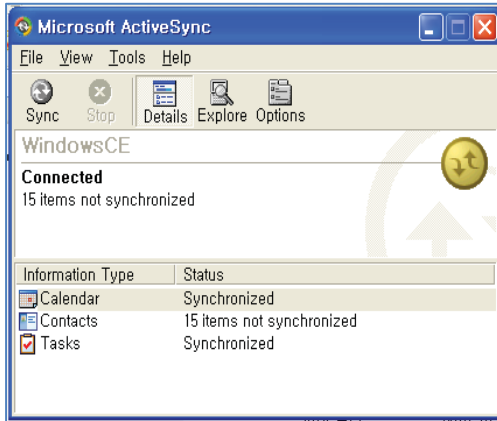
Disconnecting state

You can check the ActiveSync connecting state on the taskbar.

< Windows XP >



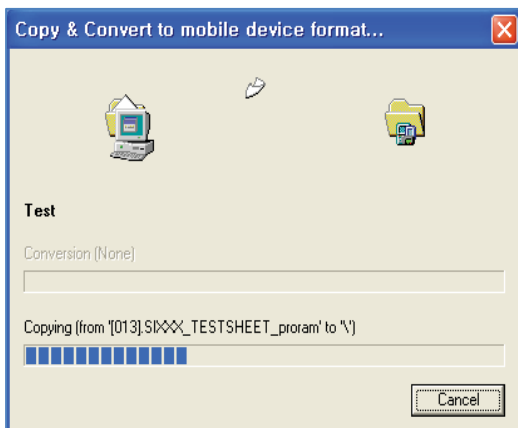
Start button/Programs/Microsoft ActiveSync



After ActiveSync connected, click Explore button.



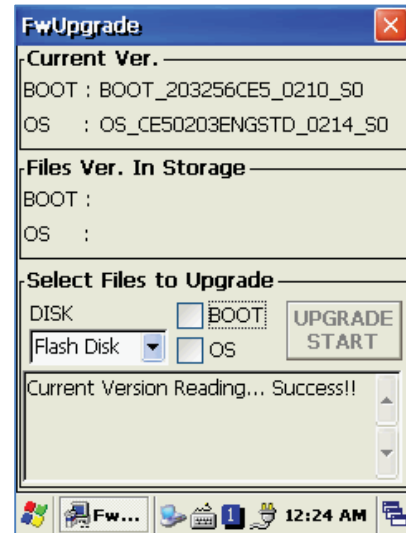
Designate transmitting file path.



Transmitting files.

8. Firmware Upgrade

[Start Button] -> [Setting] -> [Control Panel] -> [Firmware Upgrade]



1. Using 1D or 2D Barcode Scanner

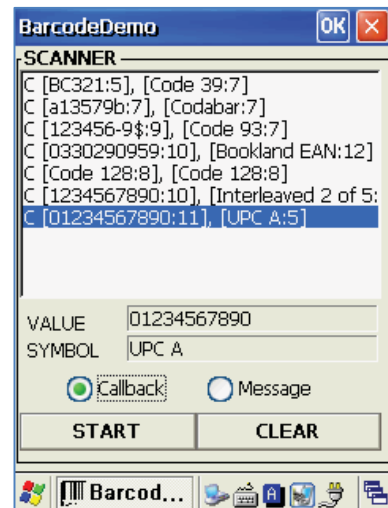
Enable to equip with a compact image engine, which could recognize all the 1D and 2D barcodes.



1.1 Scanning Barcode



Start Button/Programs/Demo
Apps/Scanner/BarcodeDemo



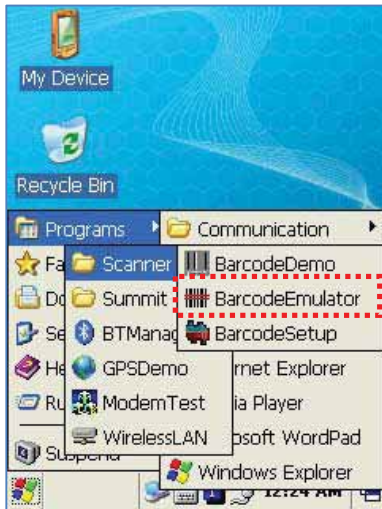
Press Scan Buttons to Read
Barcode.

1.2 Setting Barcode Emulator

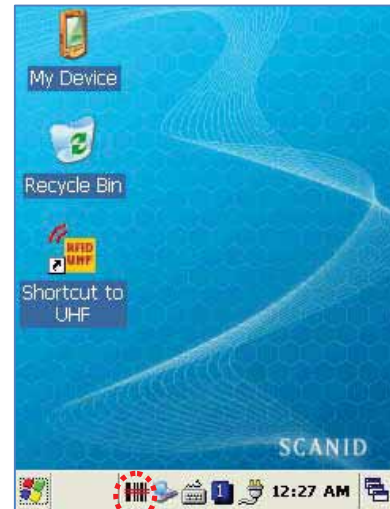
Barcode Emulator program enables you to set the barcode value input type, scan button, scan sound and so on.

Executing Barcode Emulator

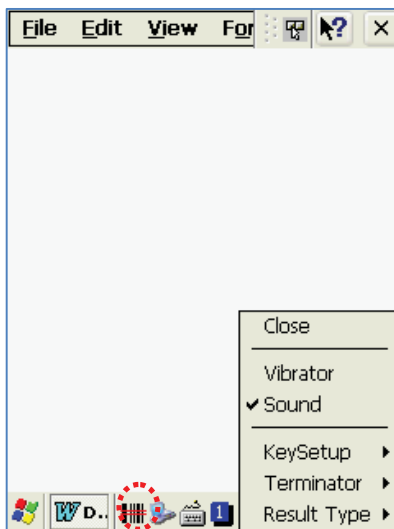
[Start Button] -> [Programs] -> [Scanner] -> [BarcodeEmulator]



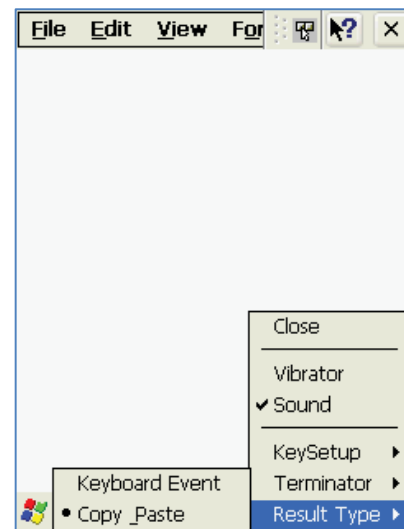
Run the Barcode Emulator



Barcode Emulator Icon will be showed on the taskbar.



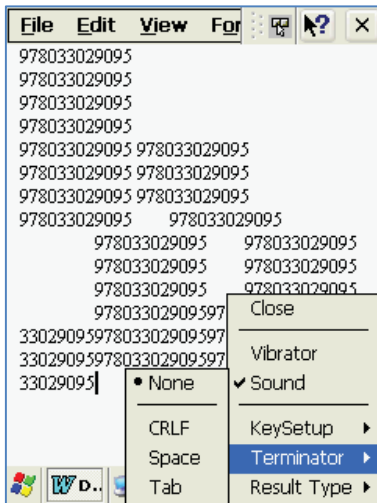
Run WordPad Program, then click the Emulator Icon



Result Type

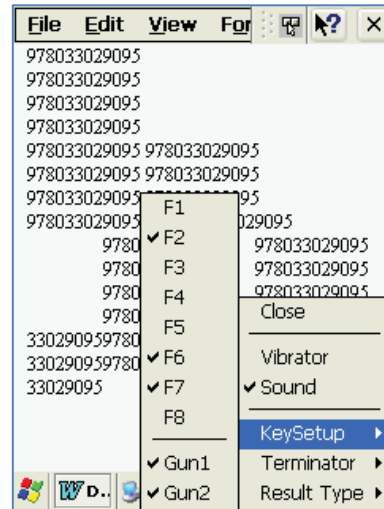
Keyboard Event: Barcode inputted one by one.

Copy Paste: Barcode will be stored be stored in clipboard and shown at paste way.



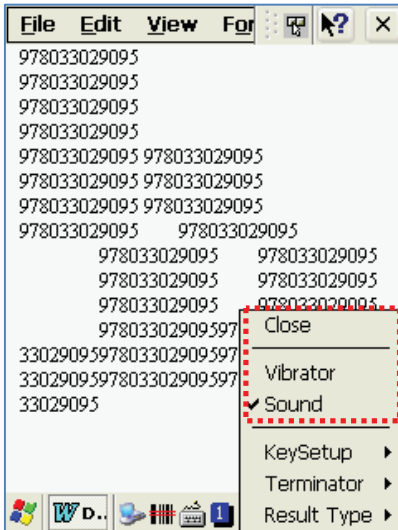
Terminator

None: Not input terminal barcode value.
CRLF: Barcode value will include an “Enter”
Space: Barcode value will include a “Space”
Tab: Inputting type as same as Tab Key Function.



Key Setup

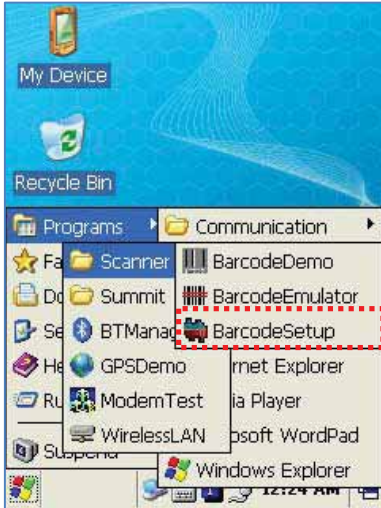
F1-F8]: Hardware Keypad
Gun1, Gun2: Gun Trigger



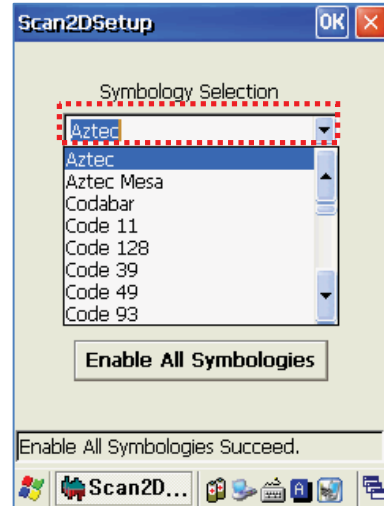
Sound: Set sound ON/OFF after scanned barcode
Vibrator: Set vibrator ON/OFF after scanned barcode
Close: Exit Emulator Program

1.3 Setting Barcode Symbology

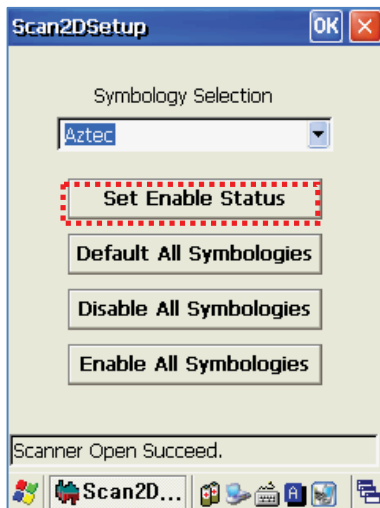
[Start Button] -> [Program] -> [Scanner] -> [BarcodeSetup]



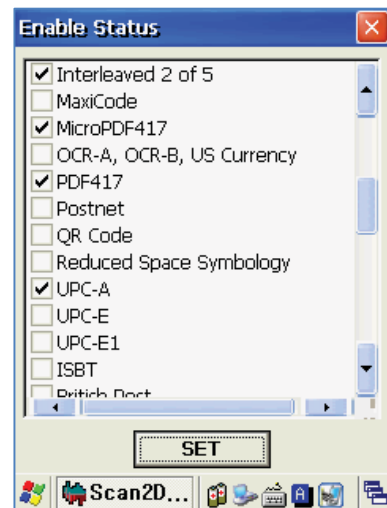
Run BarcodeSetup Program.



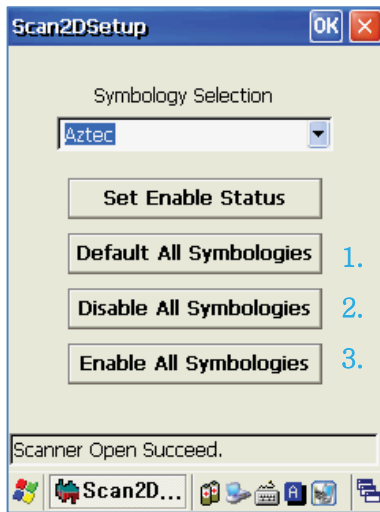
Set Barcode Type in detail.



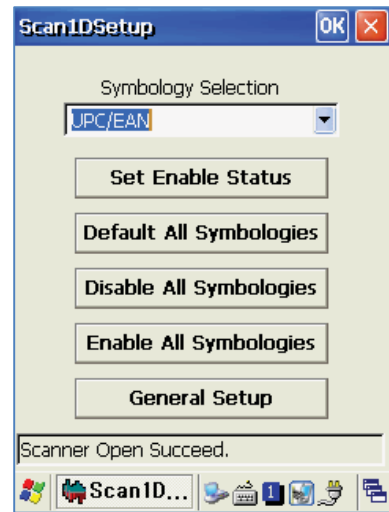
Click Set Enable Status button



Make a check mark on the barcode which you want to use, and then click <SET> button.



- 2D Symbology Selection:
1. Initialize all the symbologies to factory default value.
 2. Unable to read all the symbologies.
 3. Enable to read all the symbologies.



- 1D Symbology selection:
1. Initialize all the symbologies to factory default value.
 2. Unable to read all the symbologies.
 3. Enable to read all the symbologies.
 4. Set a level that enable to read more than two symbologies simultaneously.

■ **Warning!**

Please do not look directly into the laser beam of barcode, or it may do harm to your vision.

1.4 Barcode Scanning Beam Position

1. Remove the protective film from the window of barcode.
2. Executing the **BarcodeDemo** program.
3. Emit laser beam to the barcode.
 - Adjust the distance according to the size of barcode.
 - Barcode will stop automatically in five minutes if out of the Barcode reading range.

[Correct Scanning Beam Position]

1. The more small size of barcode, needs the more close to barcode. The effective scanning range of is from 40 ~ 300mm. if failed to scan barcode, please try to adjust scan angle and distance.
2. The laser beam is a red thick line, when scanning a barcode.



[Incorrect Scanning Beam Position]

1. The laser beam must across the barcode.
2. It will couldn't scan barcode if the laser beam across only a fraction of barcode.



2. Using Wireless LAN

enable to equip an internal 802.11 radio module to transfer data and do wireless communication. supports TCP/IP network protocol, and communicate with a host computer directly.

2.1 Connecting to Wlan

[Start Button] -> [Programs] -> [Demo Apps] -> [Wireless Lan]

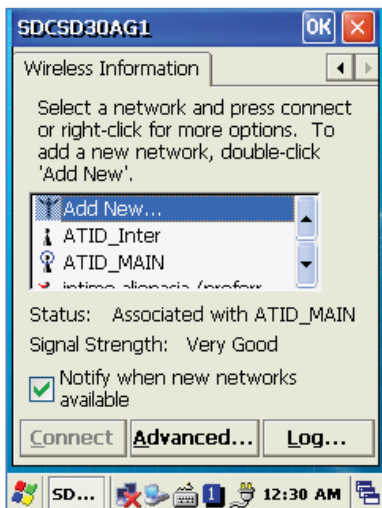


Run the Wireless LAN program.

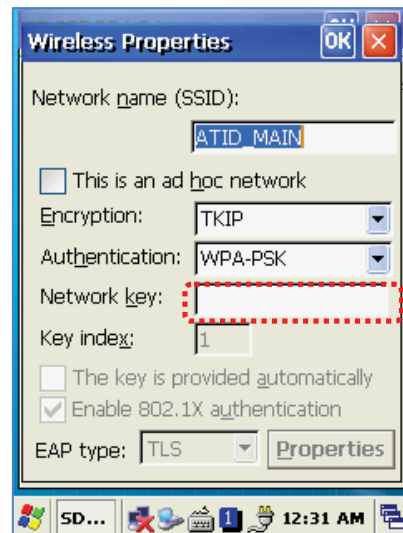


Select <WLAN ON>, and then click Ok button.

2.2 Setting Wlan Manually

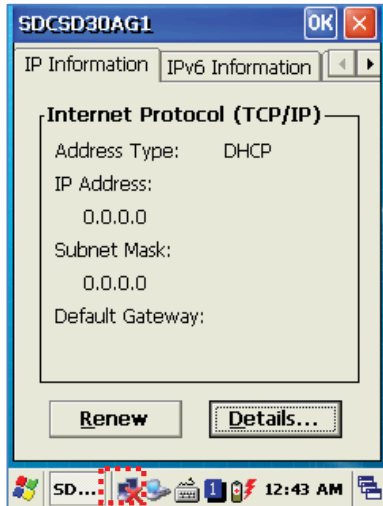


Double click a suitable device from the list of AP.



Input Key Password, and then click OK button.

2.3 Checking WLAN Information



Double click WLAN icon on the taskbar to check Wlan information.



Start Button/Programs/ATID App/Wireless Lan, and then select <WLAN OFF> to stop Wlan communication.

- **Note:**

The Wlan LED will be changed to green and the Wlan icon on the taskbar will be lit on



if failed the Wlan icon will be light off



3. Bluetooth

Si203 enable to built in with Bluetooth Manager program to communicate with wireless printer. In the Bluetooth Stack Service, Si203 only supports SPP (Serial Printer Profile) devices. Si203 Bluetooth default value of setting is off

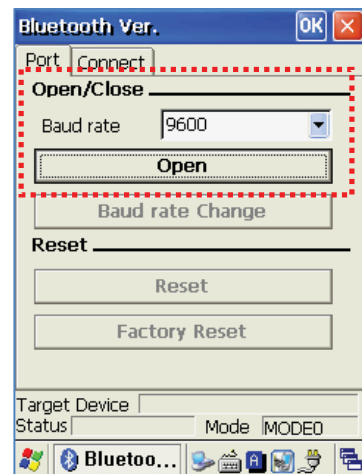
3.1 Connecting Bluetooth Printer (SPP)

BTManager program connect to Printer only in Hardware way. After connected to SPP B/T device,, Set virtual Com Port: COM3, Baudrate: 9600 bps

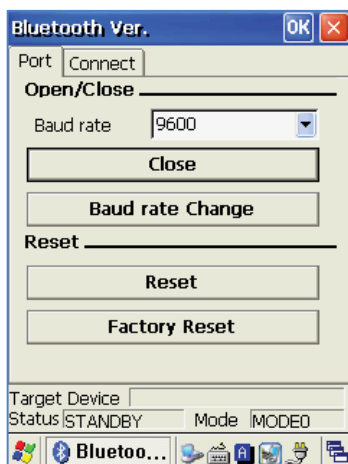
[Start Button] -> [Program] -> [DEMO Apps] -> [BTManager]



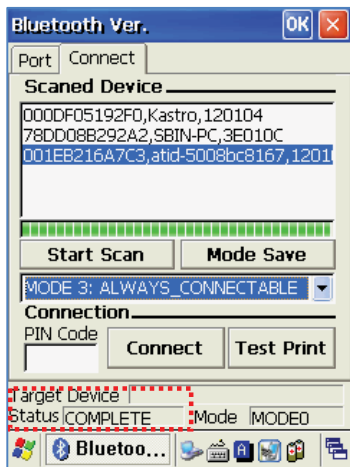
Executing BTManager program



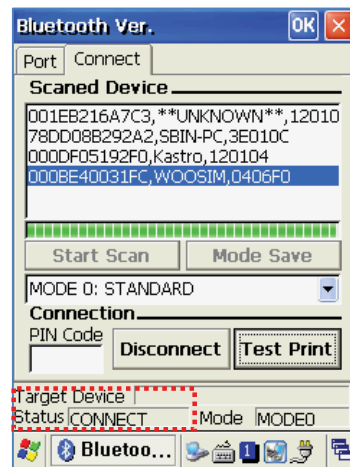
Click Open button, then to set Baud rate (Default Value: 9600bps)



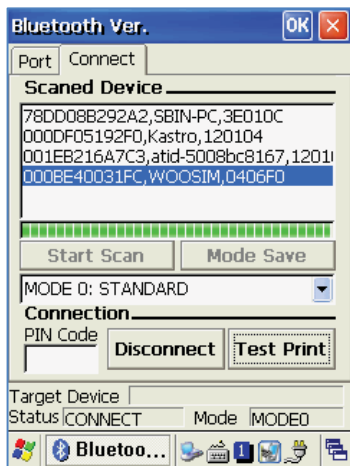
Close: Close Bluetooth program.
Baud rate Change: Select a Baud value, then click <Baud rate change> button to change baud rate.(it works with the new setting Baud rate after re executing the program) while re-executing program.
Reset: Reset setting baud value.
Factory Reset: Reset to the Default Value (it works with default Baud Value after re executing the program)



StartScan: Searching SPP device in around.
StopScan: Stop searching after found wanted device.
PinCode: Input PinCode of SPP device.
Connect: Connect Si203 to SPP device.
Status: <COMPELTE> Indicate SPP device searched done.



Status: <CONNECT> Indicate Si203 connected to SPP device.
Test Print: output data



Disconnect: Disconnect Si203 to SPP device.
Mode Save: BTManager is coded only for Hardware support to connect a Bluetooth Printer.

Mode Save:

The connecting status between Si203 and SPP device will be restored automatically, when they both are on connected status before perform Reset or HardReset.

1. MODE 0: STANDARD (Search SPP device actively)
2. MODE 1: MASTER (Search SPP device actively)
3. MODE 2: SLAVE (SPP device be on standby)
4. MODE 3: ALWAYS_CONNECTABLE (SPP device be on standby)

● Notice:

If there is some problem with your Bluetooth printer when you use your program which is coded with the Library Function that provided from the printer manufacturing company, Please contact to the printer manufacturer

4. Using GPS

GPS Module designed to be installed on the back top of the Si203.

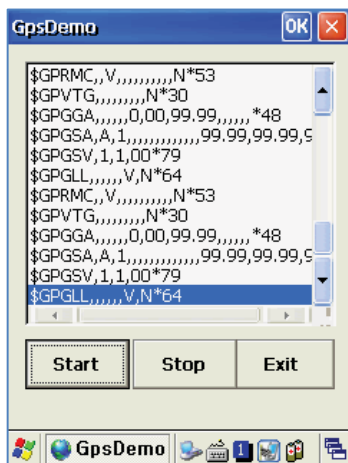
COM: 6 Baud rate: 9600

4.1 Executing GPS Demo Program

[Start Button] -> [Program] -> [DEMO Apps] -> [GPS-Demo]



Execute **GpsDemo** Program.



Start: Start to receiving GPS data

Stop: Stop to receiving GPS Data

Exit: Exit the GPS Demo program

Confirmation of GPS receiving data:

1. Finding an open place to check your GPS signals.
2. According to the actual environment, the time to receive data is different (about 3~10min) , After receiving GPS data once, it is faster to receive GPS data than the first attempt.

5. Using Camera

Si203 can equip with a 3.0 megapixel camera which could fix screen brightness, adjust the video resolution, screen capture, etc.

5.1 Using Camera

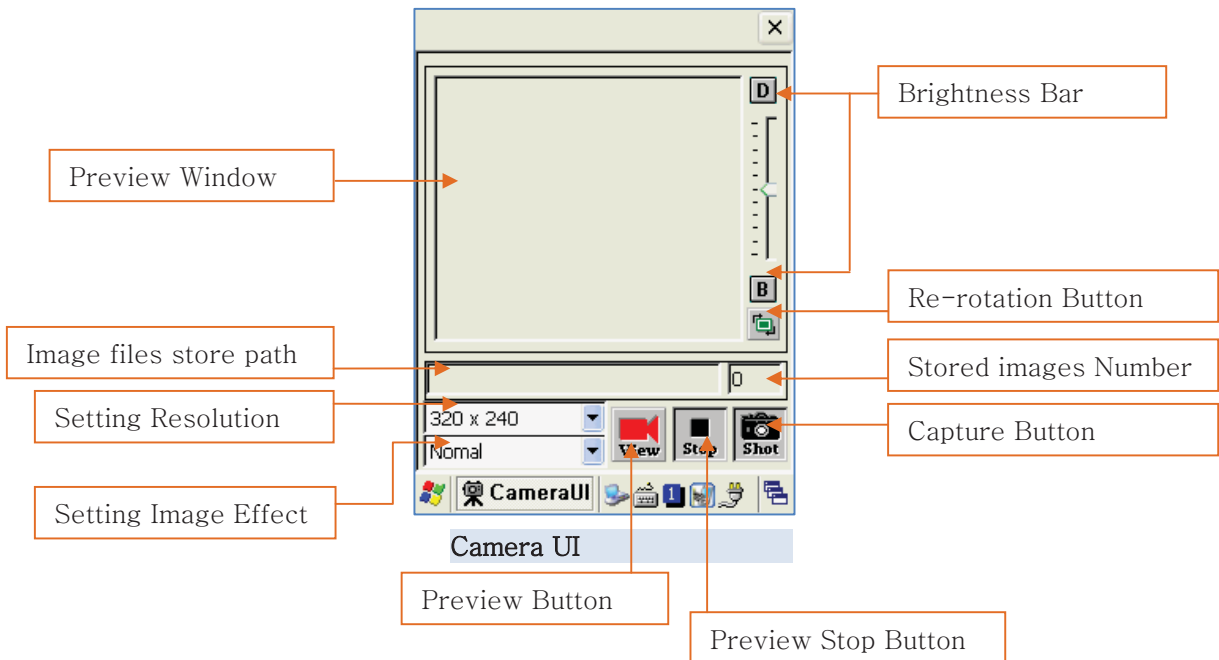
[Start Button] -> [Program] -> [DEMO Apps] -> [CameraDemo]



Execute Camera Program.



Camera's Main Screen.



Chapter5. Appendix Configuration

Physical and Environmental Characteristics

Dimension	158mm(L) X 78mm(W) X 28mm(H)
Weight	320g
Operation Temperature	-10℃ ~ 50℃
Storage Temperature	-30℃ ~ 60℃
Humidity	Non-condensing
Drop	1.5m drop to concrete

Performance Characteristics

Processor	Marvell™ PXA320 806MHz
Operating System	Windows CE 5.0 / 6.0 (Option)
Memory	ROM 256MB (Max. 512MB) / RAM 256MB
Display	3.5" QVGA with Backlight, TFT LCD, 240*320 Pixels, 262,144 Color Stylus Touch Screen Interface
Audio	Phone Receiver, Earphone Jack
Communication Port	RS-232Serial Port, USB 1.1
Expansion Slot	1 Micro SD Slot (SDHC Support) 1 SIM Slot / 1 SAM Slot
Keypad	29key
Notification	Vibrator and LED

Power Supply

Main Battery	Lithium ion 3.7V Above 3,000mAH(rechargeable) Up to 4,400mAH(Option)
Backup Battery	Lithium Polymer 3.7V, 100mAH(rechargeable)
Adaptor	Input AC100V ~ 240V Output DC5V 3A

Network Character

Wireless Lan	WLAN(802.11 b/g compliant)
Bluetooth	Class II, v2.0 (SPP Only)
GPS	D-GPS with Internal Antenna
Antenna	Internal LAN & WAN

Data Capture Devices

Barcode Engine	1D Laser Scanner
Camera	3.0Mega Pixel with Auto Focus