

Federal Communications Commission (FCC) Statement

RADIO FREQUENCY INTERFERENCE STATEMENT

This device complies with Part 15 of the FCC rules. Operation is subject to the following two conditions: 1) this device may not cause harmful interference, and 2) this device must accept any interference received, including interference that may cause undesired operation.

若 label 放置位置太小,需將此段警語放在使用手冊裡

This equipment has been tested and found to comply with the limits for a Class B digital device, pursuant to Part 15 of the FCC rules. These limits are designed to provide reasonable protection against harmful interference in a residential installation. This equipment generates, uses and can radiate radio frequency energy and if not installed and used in accordance with the instructions, may cause harmful interference to radio communications. However, there is no guarantee that interference will not occur in a particular installation. If this equipment does cause harmful interference to radio or television reception, which can be determined by turning the equipment off and on, the user is encouraged to try correct the interference by one or more of the following measures:

- Reorient the receiving antenna.
- Increase the separation between the equipment and receiver.
- Connect the equipment into an outlet on a circuit different from that to which the receiver is connected.
- Consult the dealer or an experienced radio/TV technician for help.

Any special accessories needed for compliance must be specified in the instruction manual.

Warning : A shielded-type power cord is required in order to meet FCC emission limits and also to prevent interference to the nearby radio and television reception. It is essential that only the supplied power cord be used.

(以上若 AC Power cord 為 Nonshielded , 則刪除此段)

Use only shielded cables to connect I/O devices to this equipment.

(以上若 signal cable 為 Nonshielded , 則刪除此段)

You are cautioned that changes or modifications not expressly approved by the party responsible for compliance could void your authority to operate the equipment.

BLUETOOTH PRINTER ADAPTER



Wireless Communication

USER GUIDE

BLUETOOTH PRINTER ADAPTER

Welcome

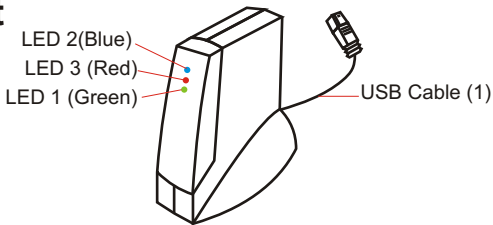
Thank you for purchasing this product. This printer adapter is designed to add more convenience and freedom to printing. With this printer adapter, you can enable wireless printing and print data or photos from your desktop PCs, Laptops, PDAs and mobile phones. It's easy-to-use and is able to activate wireless printing ranging from 80 to 100 meters. Surely, this printer will benefit your works in the office and will add more enjoyment at home.

Features

- ✔ Plug-n-Play, easy-to-use
- ✔ Supports HCRP (Hardcopy Cable Replacement Profile), SPP(Serial Port Profiles), OPP (Object Push Profile) and BIP (Basic Image Profile)
- ✔ Share the printer with your desktop Pcs, Laptops, PDAs and mobile phones, ranging from 80 to 100 meters
- ✔ Complies with USB 1.1 and the Bluetooth 1.1 specifications
- ✔ Compatible with most of the popular printers on the market.

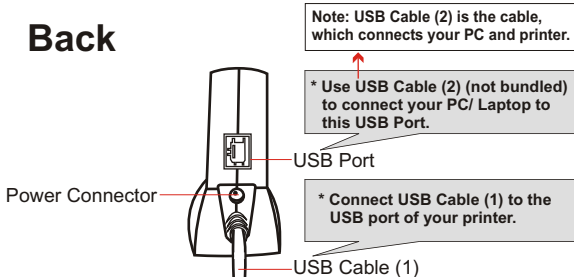
Parts of Your Printer Adapter

Front



LED Status	LED 1 (Green)	LED 2 (Blue)	LED 3 (Red)
Printer Adapter Status			
Power on but not in standby mode	On	Off	Off
Power on and in standby mode	On	Blinks once per second	Off
Receiving/ Sending data	On	On	Blinks quickly
Printing	On	On	Off

Back



Welcome

Parts of Your Printer Adapter

Accessories

Welcome



6~9V 300mA



User Guide

Package Contents

- A Bluetooth printer adapter x 1
- A 6~9VDC 300mA AC adapter x 1
- A user guide x1

Use Scenario (1)

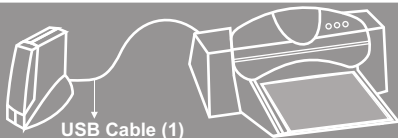
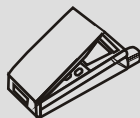
Use Scenario (1)



PDA



Mobile phone

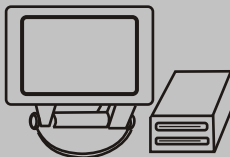


USB Cable (1)



**Bluetooth Enabled
Laptop**

**Bluetooth Enabled
Desktop PC**

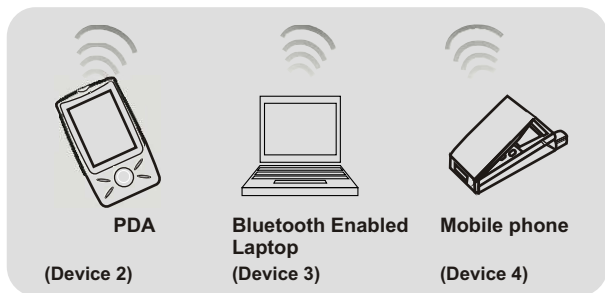
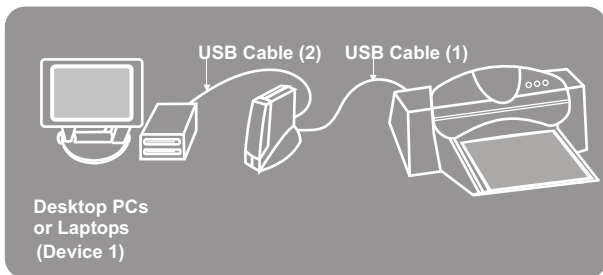


With USB Cable (1), you can print documents from your Desktop PCs, Laptops, Mobile phones or PDAs wirelessly.

Welcome

Use Scenario (2)

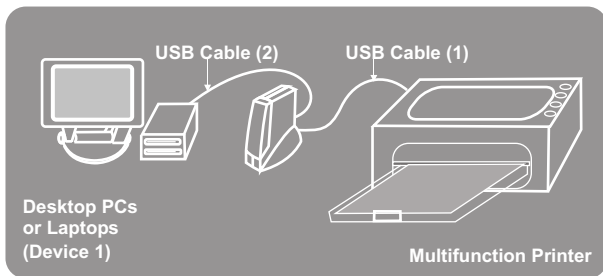
Use Scenario (2)



With USB Cable (1) and USB Cable (2), you can have wired printing from device 1 and wireless printing from device 2, 3, 4.

Use Scenario (3)

Use Scenario (3)



With a multifunction printer, you can scan/ print from device 1 and print from device 2 (but can not scan).



➔ Important Note: In Scenario (2) & (3), please refer to the instructions of your printer manual to configure a wired printer. To configure a Bluetooth printer, please see the following chapters.

System Requirements

- ☑ Printers with USB interface. (Please refer to **Printer Compatibility for Wireless Printing from PC and Mobile Phone** in the next page.)
- ☑ Bluetooth enabled computers or devices(mobile phones or PDAs) which supports HCRP(Hardcopy Replacement Profile), OPP (Object Push Profile) or BIP (Basic Image Profile).

Specifications

Windows

Your printer adapter support Windows 98SE, ME, 2000 and XP.

Bluetooth

Your printer adapter complies with Bluetooth SIG 1.1.

Bluetooth Profile

Your printer adapter supports GAP(Generic Access), SDAP(Service Discovery Application, HCRP(Hardcopy Cable Replacement Profile) and SPP(Serial Port Profile).

RF Range

The RF range of your printer adapter is from 80 to 100 meters.

Power Supply

Use 6~9V/300mA/AC-DC power adapter.

Temperature

0 °C ~ 60 °C (32 °F ~ 140 °F)

Printer Compatibility for Wireless Printing from PC and Mobile Phone

Printing from PC

HP DeskJet:450/840C/843C/845C/920C/930C/932C/935C/940C//948C/950C/952C/955C/957C/960C/970C/970CXI/980C/990C/990CXI/995C/995CK/1180C/1200C/5150/5550/5558/5560/5652/5670/6120/6127/6540/6122/2600/6127/
HP LaserJet:6P/1010/1015/1150/1200/1300/2300/1500/3200/3330/4650
HP Business InkJet:2600/3000/CP1160C/CP1700
HP ColorLaserJet:3500/3700
HP PhotoSmart:100/130/140/145/230/240/245/1000/1100/1115/1215/1218/1315/7150/7260/7350/7550/7660/7760/7960
HP MFP:2175/5110/6110
Canon DeskJet:S100/S200/S300/S330/S400/S450/S520/S600/S630/S750/S800/S820/S900/S9000/
Canon InkJet:BJC-55/BJC-85/BJC-2100/BJC-3000/BJC-8200/i70/i450/i550/i850/i950/i4700/i6100/i9100/
Epson LaserJet:EPL-N2500/EPL5900/EPL6100L/EPL6200
Epson DeskJet:STYLUS C42UX/C43UX/C60/C61/C62/C82/480/810/850 STYLUS PHOTO 830U/860/900/915/925/935/950
Epson MFP:CX5400
Minolta/QMS:LaserJetPagePro1250
Lexmark InkJet:Z-13/Z-22/
Lexmark LaserJet:E210/E322

Printing from Mobile Phone

HP DeskJet:350C/648C/810C /812C/815C/816C/825/840C/842C/843C /845C/920/930C /932C/935C/940/948/950C/952C/955/957/960C/970C/975C/970CXI/980/990C/995C/995CK/1220C/1125C/5150/5158/5160/5550/5551/5650/5652/5670/6120/6122/6127/CP1700/9300/9600/450/640/642/644/660C/830C/832C/880/882C/895C
HP Business InkJet:2200/2250/3000
HP PhotoSmart:PS100/PS130/PS140/PS240/PS230/1000/1100/PS1115/PS1215/PS1218/PS1315/PS7150/PS7350/PS7550/PS7960/PS7760/PS7660/PS7260/PS7268
Canon InkJet:i70/i475D

For Your Safety

For your safety and the maintenance of the printer adapter, please read the following precautions before you start to use this device.

Notice

- ✔ Do not drop, puncture or disassemble the printer adapter.
- ✔ Avoid all contact with water and dry hands before using. Use dry cloth to clean the surface of the printer adapter.
- ✔ Do not expose the printer adapter to high temperature or leave it in direct sunlight.
- ✔ Avoid pressing hard on the printer adapter body.
- ✔ Remove the AC adapter of the printer adapter during long periods between use.

Table of Contents

Welcome	1
Parts of Your Printer Adapter	2
Use Scenario (1)	4
Use Scenario (2)	5
Use Scenario (3)	6
Specifications	7
System Requirements	
Specifications	
Printer Compatibility	8
For Your Safety	9
1. Hardware Installation	11
Connecting Your Printer Adapter to a Printer	
2. Printing from Desktop PCs or Laptops	13
Configuring Your Bluetooth Printer - Option 1	13
Printing	20
Configuring Your Bluetooth Printer - Option 2	21
Printing	28
3. Printing from Mobile Phones	29
4. Printing from PDAs	31
5. Troubleshooting	33

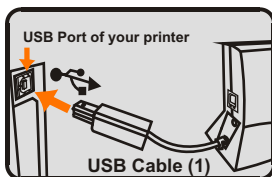
1. Hardware Installation

Connecting Your Printer Adapter to a Printer

Connecting Your Printer Adapter to a Printer

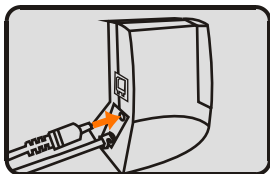
Step 1 Make sure the printer is powered off.

Step 2 Connect the USB cable (1) of your printer adapter to the USB port of the printer.



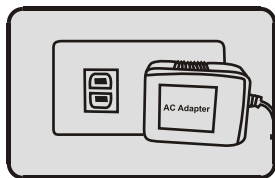
Step 3 Power on the printer.

Step 4 Plug the smaller end of the AC adapter cable into the AC power connector of your printer adapter.

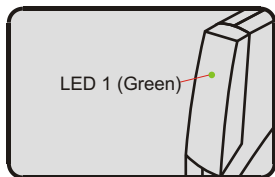


Connecting Your Printer Adapter to a Printer

- Step 5** Connect the larger end of the AC adapter cable to an electrical outlet.

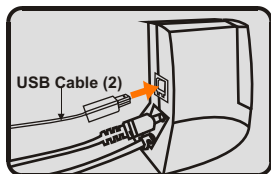


- Step 6** If successfully powered on, a steady green LED will be lit.



- Option** If you need to complete tasks as in Scenario (2) or Scenario (3), you need to use USB Cable (2). Plug the USB Cable (2) as picture shown below and plug the other end of the cable to the USB port of your PC.

Note: USB Cable (2) is the cable, which connects your PC and printer.



2. Printing from Desktop PCs or Laptops



Configuring Your Bluetooth Printer- Option 1

Before You Start

➔ **Important Note:** *If your PC or Laptop is not bluetooth enabled, you may install a USB Bluetooth adapter, so that your PC or Laptop will be bluetooth enabled. Please refer to the manual of your USB Bluetooth adapter for more detailed instructions. And please make sure that you have completed hardware installation of your printer adapter.*

Most PCs and Laptops support either of the two bluetooth profiles: HCRP (Hard Copy Replacement Profile) and SPP (Serial Port profile). **Please try option 1 first.** If your PC or Laptop supports **HCRP**, Option 1 will successfully help you configure the bluetooth printer. If your printer still fails to print, the profile your PC or Laptop supports may be **SPP**. If so, please try Option 2.

Bluetooth System Tray

Enabled	Disabled	Connected
 Blue with White	 Blue with Red	 Blue with Green

If the USB Bluetooth Adaptor is disabled, please right-click the bluetooth icon and select **“Start the Bluetooth Device”** to enable the USB Bluetooth Adaptor .



Configuring Your Bluetooth Printer - Option 1

Option 1

Your PC or Laptop Supports HCRP

You'll see a bluetooth icon on the system tray if your PC or Laptop is already bluetooth enabled.

1. Double-click **My Bluetooth Places** icon on the Desktop.



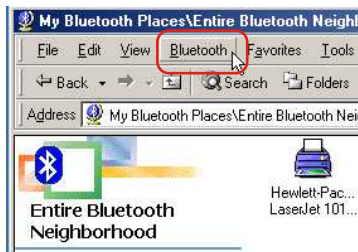
2. Double-click Find Bluetooth Devices icon.



2. Printing from Desktop PCs or Laptops

Configuring Your Bluetooth Printer- Option 1

3. Click **Bluetooth** tab.

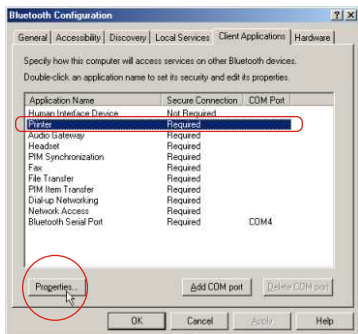


4. From the pulldown menu, select "**Advanced Configuration**".



5. Click on the **Client Applications** tab. This category allows you to set the security properties of your printer.

Select **Printer**. Then click **Properties** to disable the Secure Connection.



Configuring Your Bluetooth Printer - Option 1

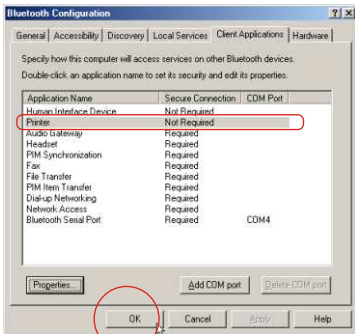
6. Disable the Secure Connection service by unticking the check box next to Secure Connection.

Then click **OK**.



7. Now, the Secure Connection service of printer is disabled. In this case, you'll not be asked to enter a PIN code to allow a successful connection.

Click **OK**.



2. Printing from Desktop PCs or Laptops

Configuring Your Bluetooth Printer- Option 1

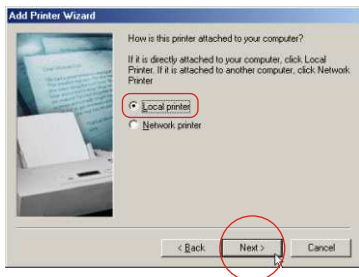
8. Double-click the printer icon.



9. Go to **Start** and select **Printers and Faxes**.

Click on **“Add a printer”**.

10. You’ll be prompted with an **“Add Printer Wizard”** window. Select **“Local printer”** and click **Next**.

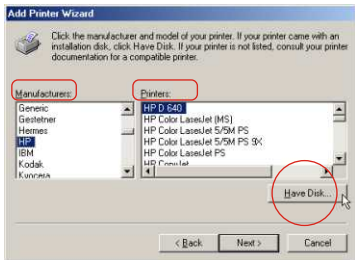


Configuring Your Bluetooth Printer - Option 1

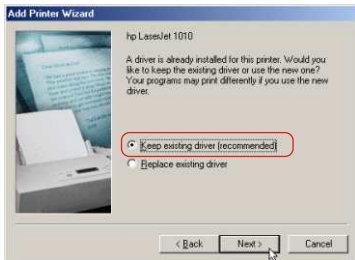
➔ **Important Note:** If the “Add Printer Wizard” in step 10 doesn’t appear, please go to Start Menu ➔ Settings ➔ Printers ➔ Add Printer and then the “Add Printer Wizard” will appear as in step 10.

11. Please select the Manufacturer and the Model of your printer. Then click next.

If your printer is not in the list, insert the printer driver disk in your CD drive. Then click Have Disc.



12. This window will not appear, unless you have already installed the same printer driver on your PC/Laptop before. Click the radio button next to “Keep existing Driver(recommended)”. Then click **Next**.

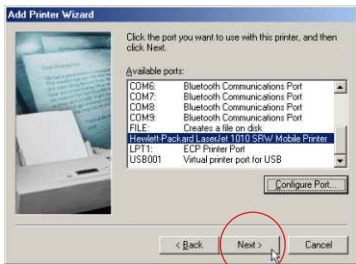


2. Printing from Desktop PCs or Laptops

Configuring Your Bluetooth Printer- Option 1

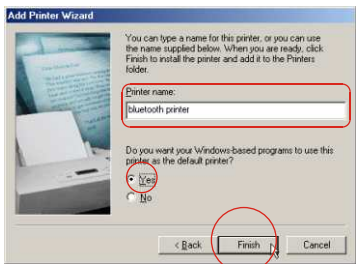
13. Select SRW Mobile Printer. Then click **Next**.

Note: The printer name depends on your printer brand and model.



14. Give your printer a name as you wish. Tick **Yes** if you want to use this printer as the default printer. Click **Finish**.

Follow the Wizard to complete the printer driver setup. After the printer driver is installed, software installation process is completed.



Important Note: Please go to Start Menu → Settings → Printers. A new installed bluetooth printer should appear in the Printer window.



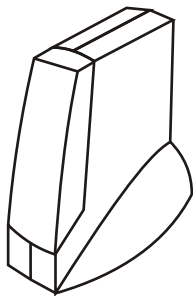
Printing

How to Print

Step 1 From any Windows application(e.g. Word), select **File** → **Print**.

Step 2 Select the bluetooth printer you have installed and click **OK**.

Step 3 Click **Print**. Wait for the printer to print.



2. Printing from Desktop PCs or Laptops

Configuring Your Bluetooth Printer- Option 2

Option 2

Your PC or Laptop Supports SPP

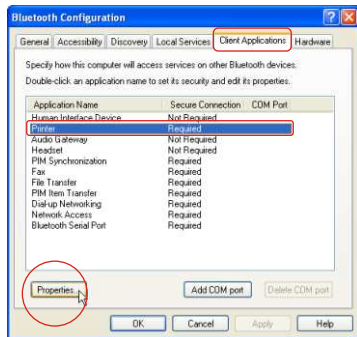
If Option 1 failed, you may try Option 2 because your PC or Laptop may supports **SPP**, not **HCRP**. Follow the steps below to configure your bluetooth printer.

1. Right-click the bluetooth icon on the system tray. Then select “**Advanced Configuration**”



2. Click on the **Client Applications** tab. This category allows you to set the security properties of your printer.

Select **Printer**. Then click **Properties** to disable the Secure Connection.



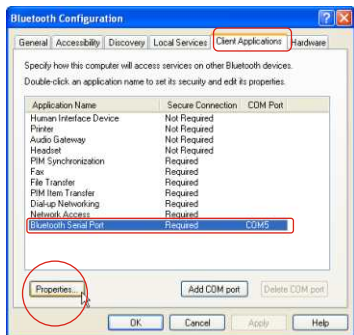
Configuring Your Bluetooth Printer - Option 2

3. Disable the Secure Connection service by unticking the check box next to Secure Connection.

Then click **OK**.



4. Select **Bluetooth Serial Port**. Then click **Properties** to disable the Secure Connection.

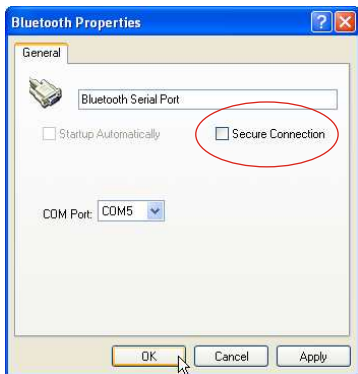


2. Printing from Desktop PCs or Laptops

Configuring Your Bluetooth Printer- Option 2

5. Disable the Secure Connection service by unchecking the check box next to Secure Connection.

From the pull-down menu of COM Port, you can select the COM Port number which will be used while adding a bluetooth printer. Then click **OK**.



6. Now, the Secure Connection service of printer is disabled. In this case, you'll not be asked to enter a PIN code to allow a successful connection.

Click **OK**.



Configuring Your Bluetooth Printer - Option 2

- Right-click the bluetooth icon on the system tray again. Then select **“Bluetooth Setup Wizard”**.
- The Bluetooth Setup window will appear. Click on the radio button next to **“I want to find a specific Bluetooth device and configure how this computer will use its services”**. Click **Next**.
- The Bluetooth Device Selection window will search for any Bluetooth devices in this area. Take HP 1010 for example. This window has found a HP 1010 Mobile Printer. Select the printer and click **Next**.



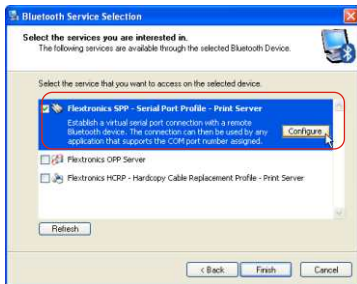
2. Printing from Desktop PCs or Laptops

Configuring Your Bluetooth Printer- Option 2

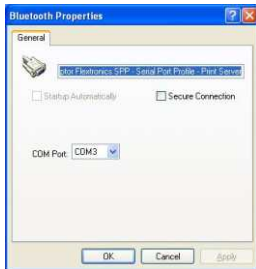
10. Because the Secure Connection has been disabled, just click **Skip Pairing**.



11. Tick the check box next to “**Flextronicx SPP-Serial Port Profile-Print Server**”.



12. A Bluetooth Properties Window will pop out. Please untick Secure Connection and remember the number of the COM Port. Click **OK** and then click **Finish**.

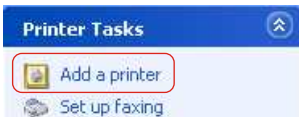


Configuring Your Bluetooth Printer - Option 2

13. Go to **Start** and select **Printers and Faxes**.



14. Click on **“Add a printer”**.

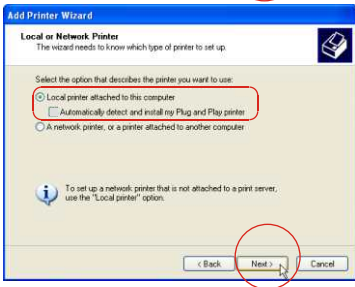


15. An **“Add Printer Wizard”** window will appear.

Click **Next**.



16. Click the radio button next to **“Local printer attached to the computer”** and untick the check box next to **“Automatically detect and install my Plug and Play printer”**. Then click **Next**.



2. Printing from Desktop PCs or Laptops

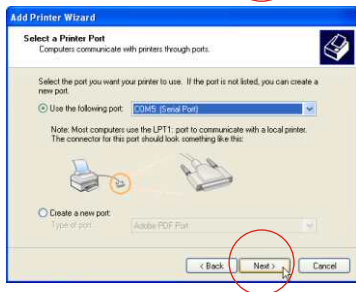
Configuring Your Bluetooth Printer- Option 2

17. Click **Next** to install the printer manually.



18. Tick "Use the following port", and select from the pull down menu the com number specified in step

Click "Next" to continue.



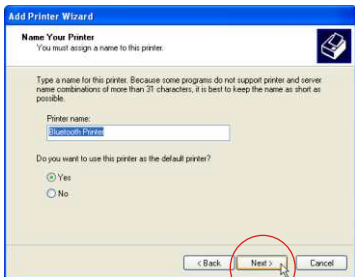
19. Please select the Manufacturer and the Model of your printer. Then click next. If your printer is not on the list, insert the printer driver disk in your CD drive. then click Have Disc.



Printing

20. Give your printer a name as you wish.
Tick “**Yes**” if you want to use this printer as the default printer. Click **Next**.

Follow the Wizard to complete the printer driver setup. After the printer driver is installed, software installation process is completed.



How to Print

- Step 1** From any Windows application(e.g. Word), select **File** → **Print**.
- Step 2** Select the bluetooth printer you have installed and click **OK**.
- Step 3** Click **Print**. Wait for the printer to print.

3. Printing from Mobile Phones

Before You Start

➔ ***Important Note:*** *Your mobile phones should be equipped with Bluetooth wireless technology and phone camera.*

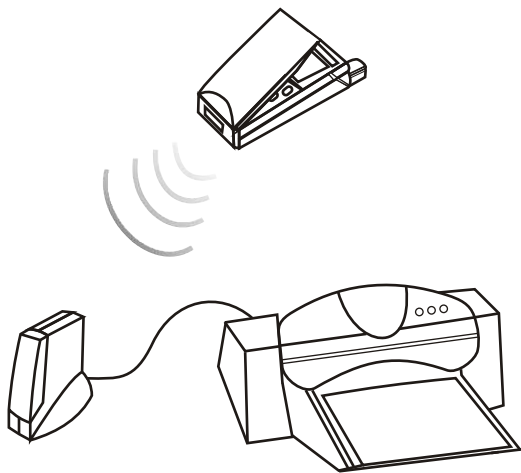
Printing from Mobile Phones

- Step 1** Make sure you have completed the hardware installation of your printer adapter in page 11.
- Step 2** Follow the instructions of the manual of your mobile phones to take a picture and store it in your mobile phones.
- Step 3** Select the picture you have stored in your mobile phones and follow the instructions of the manual of your mobile phones to send data via Bluetooth.
- Step 4** The printer starts to print.

Printing from Mobile Phones

How to Print

➔ **Important Note:** *Printing quality of photos depends on your phone camera pixel.*



4. Printing from PDAs

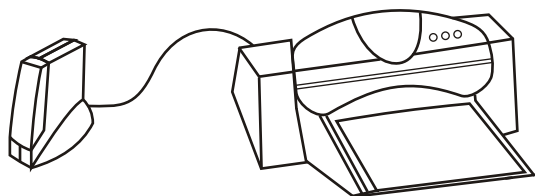
Before You Start

➔ ***Important Note:*** *Your PDAs should be equipped with Bluetooth wireless technology.*

Printing from PDAs

- Step 1** Make sure you have completed the hardware installation of your printer adapter in page 11.
- Step 2** Follow the instructions of the manual of your PDAs to open a document.
- Step 3** Follow the instructions of the manual of your PDAs to send the document via Bluetooth. The Bluetooth service should be “On” before you send this document.
- Step 4** Choose **OK** to send this document.
- Step 5** The printer starts to print.

Printing from PDAs



PDA

5. Troubleshooting

Q1: I can not print.

A1:

1. Check the power and the connection status of Printer Adapter. Is the LED status of Printer Adapter the same as described in page 2 now?
2. Check the compatibility of your printer. See if it supports wireless printing from both PC and mobile phone.
3. Check the bluetooth status of your PC/ mobile phone.
4. Check if the bluetooth printer installation is successfully installed. Your PC may support either HCRP or SPP. Try the installation of the other one if one of them failed.
5. Wireless printing takes more time than wired printing. Please Wait.
6. Maybe your printer is too busy now. Try again later.

Q2: I can print from PC, but I can not print from my mobile phone.

A2:

1. Check the compatibility of your printer (page 8). See if it supports wireless printing from both PC and mobile phone.
2. Check if your mobile phone is bluetooth enabled.
3. Refer to the manual of your mobile phone.

Troubleshooting

Q3: I can print from my mobile phone, but I can not print from PC.

- A3:**
1. Check the compatibility of your printer. See if it supports wireless printing from both PC and mobile phone.
 2. Check if your PC is bluetooth enabled.
 3. Refer to the manual of your PC bluetooth device.

