

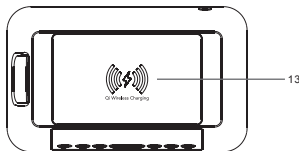
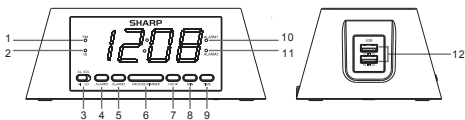
SHARP®

SPC237A Qi Wireless Charging Alarm Clock Instruction Manual & Warranty

Thank you for your purchase of this quality clock. The utmost care has gone into the design and manufacture of your clock. Please read these instructions and store them in a safe place for future reference.

CONTROLS

1. **PM** indicator
2. **Qi** indicator
3. **AL. VOL HI/LO** switch
4. **ALARM 1** button
5. **ALARM 2** button
6. **SNOOZE/DIMMER** button
7. **HOUR** button
8. **MIN** button
9. **TIME** button
10. **Alarm 1** indicator
11. **Alarm 2** indicator
12. USB charging ports
13. Qi wireless charging area



CONNECTING TO THE POWER SUPPLY

Begin by plugging in the power cord into a standard household outlet. The display will flash indicating the time is ready to be set.

INSTALLING THE TIME & ALARM BACK UP BATTERY

The clock time and alarm (if set) can be maintained during a power failure by 2 x AAA batteries (not supplied). Once the power is restored, check the time to make sure it is accurate and re-set if necessary.

INSERTING THE BATTERY

1. Open the battery compartment at the back of the unit by pressing on the catch and removing the cover.
2. Insert 2 x AAA battery (preferably alkaline batteries) into the battery compartment, following the polarity as shown on the diagram inside the compartment.
3. Replace the battery compartment cover.

Qi WIRELESS CHARGING

- Place your wireless device on top of the clock, charging will begin on contact.
- When wireless charging, the **Qi** indicator is continuously solid.

Note:

- When the phone is being charged your phone charging indicator will show as normal.
- For maximum charging efficiency, the phone must be aligned with the center of the charging area.

USB CHARGING

To charge, connect your USB device to the USB port of this clock.

Note:

- Use only with devices that require 5V USB power.
- Each USB port provides 2,000mA recharging current. Devices requiring more than 2,000mA should not be used.
- Charging time may vary for different devices.
- This device is to be used **ONLY** for **SMARTPHONES**. Charging **TABLETS & LAPTOPS** will void the warranty.

SETTING THE CLOCK

- Press and hold the **TIME** button down to activate time setting.
- While holding down the **TIME** button, press the **HOUR** button to advance to the correct hour. The **PM** indicator will light when the hour is advanced into the PM time.
- While holding down the **TIME** button, press the **MIN** button to advance to the correct minute.
- Release the **TIME** button when the correct time is shown on the display.

SETTING THE ALARM

- Press and hold the **ALARM 1/2** button down to activate alarm setting.
- While holding down the **ALARM 1/2** button, press the **HOUR** button to advance to the correct hour. The **PM** indicator will light when the hour is advanced into the PM time.
- While holding down the **ALARM 1/2** button, press the **MIN** button to advance to the correct minute.
- Release the **ALARM 1/2** button when the correct alarm time is shown on the display.

USING THE ALARM FUNCTION

- Press the **ALARM 1/2** button to activate the alarm and the alarm indicator will light up the display.
- Slide the **AL. VOL HI/LO** switch to adjust the alarm volume from high to low.
- Press the **ALARM 1/2** button again to deactivate the alarm and the alarm indicator will no longer be visible.

SNOOZE FUNCTION

- Pressing the **SNOOZE** button after the alarm sounds will cause the alarm to pause and the alarm will sound again in 9 minutes. This will happen each time the **SNOOZE** button is pressed.

DIMMER FUNCTION

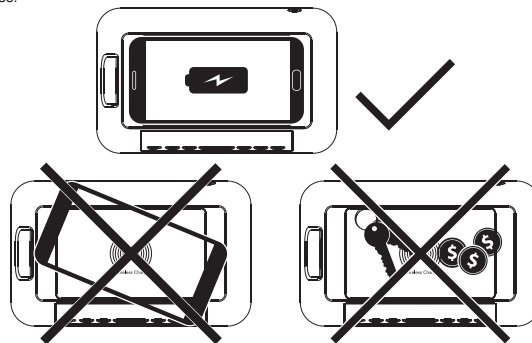
- Press the **DIMMER** button to adjust the brightness of the LED display. The dimmer has three levels of brightness; **High, Medium & Low**

CARE OF YOUR CLOCK

- Replace the back up battery annually, or store the clock without a battery when not in use.
- A soft cloth or a paper towel may be used to clean your clock.
- Do not use any corrosive cleanser or chemical solutions on the clock.
- Keep your clock dry; if it gets wet, wipe it dry immediately. Keep your clock away from dust and dirt. Handle your clock carefully; do not drop it.
- Do not subject the clock to excessive force, shock, dust, temperature, or humidity. Any of these conditions may shorten the life of the clock.
- Do not tamper with any of the internal components of this clock. This will invalidate the warranty and may cause damage.

Qi COMPATIBLE WITH:

- Samsung Galaxy: S20 Ultra, S20 Plus, S20, Note 10 Plus 5G, Note 10 Plus, Note 10, S10 5G, S10 Plus, S10, S10e, Note 9, S9, S9+, Note 8, S8, S8+, S7, S7 Edge
- Apple iPhone: SE 2020, 11 Pro Max, 11 Pro, 11, XS Max XS, XR, 8, 8 Plus and all Qi-enabled smartphones!




SAFETY WARNING:

Only place Qi approved charging devices onto the charging pad. Please do not place keys, coins or other metal objects onto the charging pad.

The "Qi" symbol is a trademark of the Wireless Power Consortium. The product is designed for Qi Certificate.

IMPORTANT SAFETY INSTRUCTIONS

1. Read these instructions – All the safety and operating instructions should be read before this product is operated.
2. Keep these instructions – The safety and operating instructions should be retained for future reference.
3. Heed all warnings – All warnings on the appliance and in the operating instructions should be adhered to.
4. Follow all instructions – All operating and use instructions should be followed.
5. Do not use this apparatus near water – The appliance should not be used near water or moisture – for example, in a wet basement or near a swimming pool, and the like.
6. Clean only with dry cloth.
7. Do not block any ventilation openings. Install in accordance with the manufacturer's instructions.
8. Do not install near any heat sources such as radiators, heat registers, stoves, or other apparatus (including amplifiers) that produce heat.
9. Do not defeat the safety purpose of the polarized or grounding plug. A polarized plug has two blades with one wider than the other. A grounding plug has two blades and a third grounding prong. The wide blade or the third prong is provided for your safety. If the provided plug does not fit into your outlet, consult an electrician for replacement of the obsolete outlet.
10. Protect the power cord from being walked on or pinched particularly at the plugs, convenience receptacles, and at the point where they exit from the apparatus.
11. Only use attachments/accessories specified by the manufacturer.
12. Use only with the cart, stand, tripod, bracket, or table specified by the manufacturer, or sold with the apparatus. When a cart or rack is used, use caution when moving the cart/apparatus combination to avoid injury from tip-over.
13. Unplug the apparatus during lightning storms or when unused for long periods of time.
14. Refer all servicing to qualified personnel. Servicing is required when the apparatus has been damaged in any way, such as power supply cord or plug is damaged, liquid has been spilled or objects have fallen into the apparatus has been exposed to rain or moisture, does not operate normally, or has been dropped.
15. CAUTION: These servicing instructions are for use by qualified service personnel only. To reduce the risk of electric shock, do not perform any servicing other than that contained in the operating instructions unless you are qualified to do so.
16. Do not install this equipment in a confined or building-in space such as a book case or similar unit, and remain a well ventilation conditions at open site. The ventilation should not be impeded by covering the ventilation openings with items such as newspaper, table-cloths, curtains etc.
17. WARNING: Only use attachments/accessories specified or provided by the manufacturer (such as the exclusive supply adapter, battery etc).
18. WARNING: Please refer the information on exterior bottom enclosure for electrical and safety information before installing or operating the apparatus.
19. WARNING: To reduce the risk of fire or electric shock, do not expose this apparatus to rain or moisture. The apparatus shall not be exposed to dripping or splashing and that objects filled with liquids, such as vases, shall not be placed on apparatus.
20. WARNING: The batteries (battery pack or batteries installed) shall not be exposed to excessive heat such as sunshine, fire or the like.
21. WARNING: The mains plug or appliance coupler is used as disconnect device, the disconnect device shall remain readily operable.
22.  This equipment is a Class II or double insulated electrical appliance. It has been designed in such a way that it does not require a safety connection to electrical earth.



23.

- This lightning flash with arrowhead symbol within an equilateral triangle is intended to alert the user to the presence of non-insulated "dangerous voltage" within the product's enclosure that may be of sufficient magnitude to constitute a risk of electric shock.
 - Warning: To reduce the risk of electric shock, do not remove cover (or back) as there are no user-serviceable parts inside. Refer servicing to qualified personnel.
 - The exclamation point within an equilateral triangle is intended to alert the user to the presence of important operating and maintenance instructions in the literature accompanying the appliance.
24. CAUTION: Risk of explosion if the battery is replaced by an incorrect type.
25. No naked flame sources, such as lighted candles, should be placed on the apparatus.
26. Attention should be drawn to environmental aspects of battery disposal.
27. The product is designed to use in moderate climates.

FCC WARNINGS

WARNING: Changes or modifications to this unit not expressly approved by the party responsible for compliance could void the user's authority to operate the equipment.

NOTE: This equipment has been tested and found to comply with the limits for a Class B digital device, pursuant to Part 15 of the FCC Rules. These limits are designed to provide reasonable protection against harmful interference in a residential installation. This equipment generates, uses, and can radiate radio frequency energy and, if not installed and used in accordance with the instructions, may cause harmful interference to radio communications. However, there is no guarantee that interference will not occur in a particular installation. If this equipment does cause harmful interference to radio or television reception, which can be determined by turning the equipment off and on, the user is encouraged to try to correct the interference by one or more of the following measures:

- Reorient or relocate the receiving antenna.
- Increase the separation between the equipment and receiver.
- Connect the equipment into an outlet on a circuit different from that to which the receiver is connected.
- Consult the dealer or an experienced radio/TV technician for help.

This equipment complies with FCC radiation exposure limits set forth for an uncontrolled environment. This equipment should be installed and operated with minimum distance 20cm between the radiator & your body.

For Customer Service Please Call Toll Free at
1-(800)-221-0131 and ask for Customer Service.
Monday-Friday 9:00 AM - 4:00 PM EST

Please call for assistance before returning the clock to the store.

One Year Limited Warranty

M.Z. Berger & Company warrants the original consumer purchaser of this product that it shall be free of defects in materials and workmanship for one year from the purchase date of this product. Defects caused by tampering, improper use, unauthorized modifications or repairs, immersion in water or abuse are not covered by this warranty. If a defect covered by this warranty occurs during the warranty period, wrap your clock carefully and send it to the following address:

M.Z. Berger & Co., Inc.
353 Lexington Ave - 14th FL.
New York, NY 10016

You must include a Proof of Purchase, either the original receipt or a photocopy and a check or money order for USD \$5.00 to cover the cost of handling. Also include your return address inside the package. M.Z. Berger will repair or replace the clock and return it to you. M.Z. Berger will not be liable for any loss or damage, including incidental or consequential damages of any kind, from any breach of warranty either expressed or implied relating to the product. Since some states do not allow the exclusion or limitation of incidental or consequential damages, this limitation may not apply to you.

Printed in China

Model SPC237A

SHARP registered in the U.S. Patent and Trademark Office.