



AS/Service

Manufacturer : IMPACTRA Co., Ltd
www.impactra.com
82 - 2 - 578 - 7533
(ext. 200)
Service : afterservice@impactra.com



PORTABLE DIGITAL MP4 PLAYER

User's Manual

The World First
Portable Digital MP4 Player
with Windows Media Player



This document is the basic user's manual

Class B digital device

This equipment has been tested and found to comply with the limits for a Class B digital device, pursuant to part 15 of the FCC Rules. These limits are designed to provide reasonable protection against harmful interference in a residential installation. This equipment generates, uses and can radiate radio frequency energy and, if not installed and used in accordance with the instructions, may cause harmful interference to radio communications. However, there is no guarantee that interference will not occur in a particular installation. If this equipment does cause harmful interference to radio or television reception, which can be determined by turning the equipment off and on, the user is encouraged to try to correct the interference by one or more of the following measures:

- Reorient or relocate the receiving antenna.
- Increase the separation between the equipment and receiver.
- Connect the equipment into an outlet on a circuit different from that to which the receiver is connected.
- Consult the dealer or an experienced radio/TV technician for help.

This device complies with part 15 of the FCC Rules. Operation is subject to the following two conditions: (1) This device may not cause harmful interference, and (2) this device must accept any interference received, including interference that may cause undesired operation.

1 Please check it first, before using the Motion-I

1 Introduction

Motion-I is the high quality digital device, and so please, use carefully.
Incorrect using will occur the data-loss, make the trouble and system down etc.,

Don't do it

- Don't store heavy things above the Motion-I
- Don't put the alien substance into the memory hole and earphone jack.
- Don't put the water or drinking beverage upon the Motion-I
- Don't put it down the floor or kick it strongly
- Don't disjoint the Motion-I to pieces
 - If it need fix up, please inform us about your inconvenience by call/ e-mail
 - Please use service center of the authorized agent.
- Don't Clean the Motion-I by the benzene or the thinner
 - Please use only a dry soft cloth to clean it gently
- Don't put it into the heated, it cause the degeneration and error.

Contents

1. Introduction	2
2. The description of Motion-I	4
3. The components of Motion-I Basic Package	5
4. The detail part name of Motion-I base system	6
5. The explanation of Motion-I function keys & button	7
6. The explanation of the "Status Bar" (on the top of LCD-screen)	9
7. The right process of the MMC/SD Memory card exchanging	10
8. The right process of the battery exchanging	11
9. The install process of "Motion-I" H/W	12
10. The install process of "I-Manager" S/W	13
11. The using method of the handy charger	15
12. The usage of "I-Manager"	17
13. The basic usage of "Motion-I"	22
(1) Power on/off	22
(2) The usage to play the vedio, audio file	23
(3) The usage to play the voice-record file	24
(4) The usage to play the picture-file (bmp, jpeg, etc.,)	25
(5) The usage to record the voice & sound	26
(6) The usage to play the game	28
(7) The usage of the "PIMS" function	29
(8) The usage of the "Set-up" function	30
1) The usage of the "File" function	30
2) The usage of the "Option" function	34
3) The usage of the "System" function	36
4) The usage of the "Personal" function	39
5) The usage of the "Help" function	40

2 The description of "Motion-I"

1 The concept of "Motion-I"

Portable Digital MP4 Player Motion-I is the first multimedia player in the world equipped with Microsoft Windows Media Player. It stores and plays motion picture, digital audio and still image. It also have someother functions such as voice recording, PIMS and Game.(last two functions will be added soon)

Tons of video and audio contents is supplied by the way of NetSync which is a contents downloading service provided by inkaq.com(<http://www.inkaq.com>). NetSync will give Motion-I very special excitement

2 The Features of "Motion-I"

Motion Picture Player

- Play and Store motion picture file coded by WMT(WMA,ASF)
- WMV, ASF file format support
- Voice Recording on PC based

Digital Audio Player

- MP3, AAC(Advanced Audio Codec), WMA(Windows Media Audio) Play and Store
- MP3 file 60min, storage(up to 2hrs), AAC file(up to 2hrs), WMA file(3 ~ 4hrs)
- Hi quality Microphone recording and playing

3 The Specifications of "Motion-I"

Player

- LCD : 2.5 inch TFT
- Internal Memory : 64M / 128M NAND flash Memory
- External Memory : SD/MMC memory card
- PC Interface : USB connect
- Rechargeable Battery : Liium-Polymer (up to 3hrs)
- OS : Windows CE 3.0
- Download speed : 2.4Mbps

Dimension

- Size : 63 X 90 X 26 (W x H x D)
- Weight : 105g excluding Battery

Option Device

- TV Pack
- Digital Still Camera (1280 x 1024)

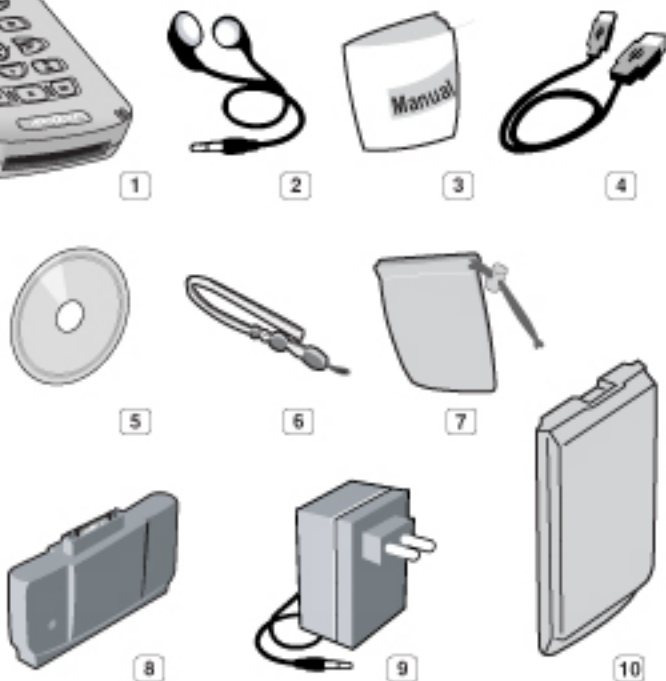
Accessory

- Handy Charger, Stereo Earphone, USB cable, Installation CD, User's guide

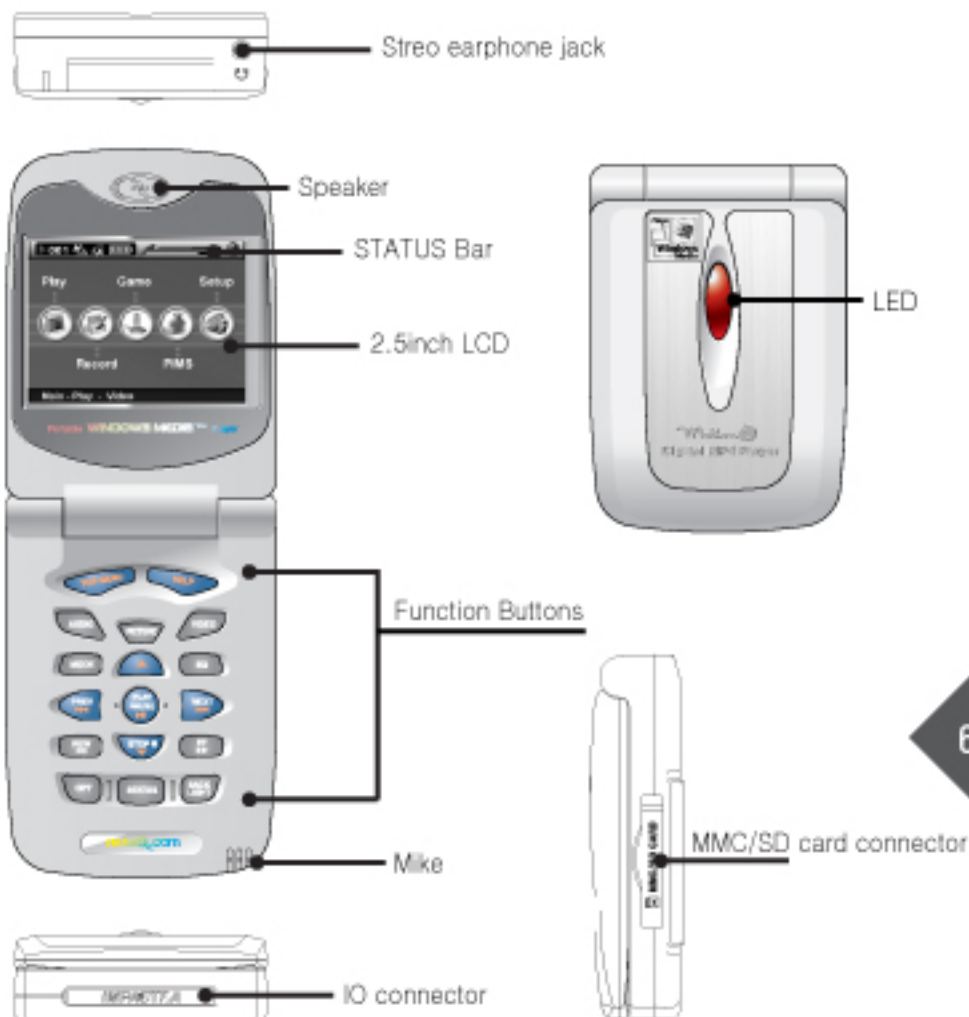
3 The components of Motion-I Basic Package



- | | |
|-------------------|-------------------------|
| 1 Motion-I | 7 Carrying Case |
| 2 Stereo Earphone | 8 Handy Charger |
| 3 User's guide | 9 DC Adaptor |
| 4 USB cable | 10 Rechargeable Battery |
| 5 Installation CD | |
| 6 Hand strap | |



4 The detail part-name of Motion-I base system



5 The explanation of Motion-I function keys & button



Move to Help



Move to Main menu



Move to audio-filebox and audio file lists display



Move to audio-filebox and picture file lists display



Move to video-filebox and video file lists display



MODE

1 : Repeat selected one file only

A : Play all the files listed in the filebox

N : Play the selected files only one time



Up Key

LCD bright control in SET Menu



PREV 1. Move to previous menu
2. Play previous content on Playing



PLAY/PAUSE

1. Menu selection

2. Play/Pause selected file

3. Voice Recording in REC mode



NEXT 1. Move to next menu
2. Play next content on Playing



STOP/Down Key

1. STOP on Playing
2. Move to down Menu and files in lists
3. Voice Recording Stop



Rewind to previous menu



Menu mode

LCD bright control on Playing (0 ~ 3)



FastForward on Playing



EQ mode select

Pop, Jazz, Rock, Normal, Classic



Select Option device

(TV pack, Digital Still Camera)



Video, Audio file information Volume, Play mode and Equalizer Battery capacity display



Volume Up/Down

Power ON/OFF

Recording start/stop Button

6 The explanation of the "Status Bar" (on the top of LCD-screen)



- ① This indicator displays the situation of "play/pause/stop" mode
- ② This Number is Contents serial number in recording order
- ③ Music indicator represents Classification of Music equalizing
"Normal[N], Classic[C], Pop [P], Jazz[J], Rock[R]
- ④ Auto-repeat indicator
[1]: Auto-repeat only one content selected
[A]: Auto-repeat all contents in one time
[N]: Auto-repeat all contents continuously
- ⑤ Battery indicator displays Charging status & Power capacity.
- ⑥ Volume indicator displays Volume status
- ⑦ Playing-time indicator displays Processing-time of selected Content.
- ⑧ Backlight indicator displays 4th difference status of backlighting

7 The right process of the MMC/SD Memory card exchanging

Lift up the MMC/SD CARD COVER,
and put the memory card in.
Be careful in right direction along
the cover sign of Memory card.



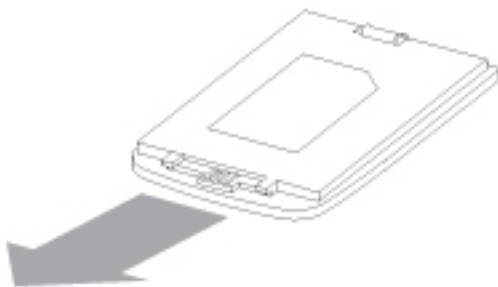
MMC/SD CARD Cover



MMC/SD CARD

10

8 The right process of the battery exchanging



- Put the battery on the back of Motion-I from the bottom side to top side

Connect / disconnect Button



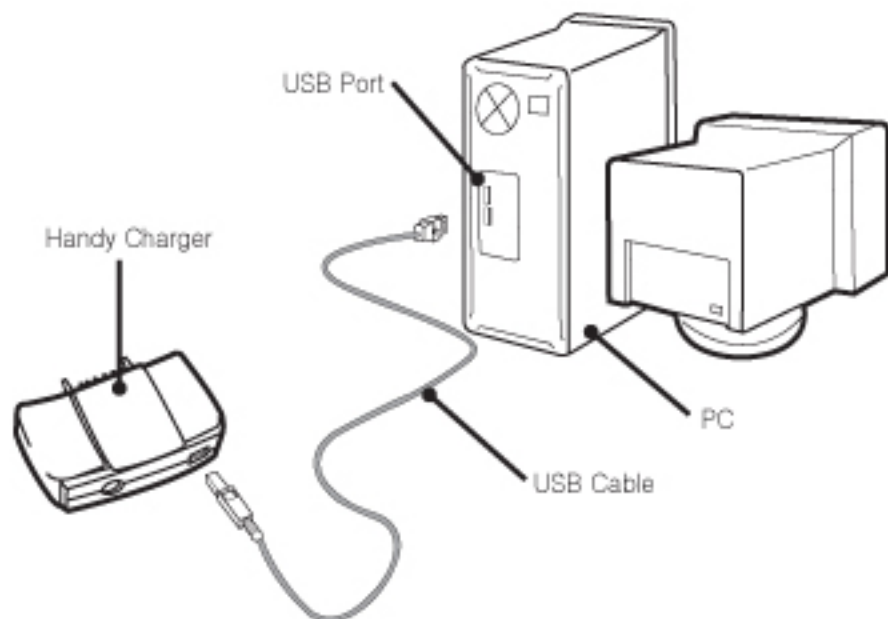
11

- Connect button should make a "click" sound in case of complete connection
- In case of disconnection, first of all, put the button and disconnect the battery in the reverse way, step by step.

9 The install process of "Motion-I" H/W

1 Hardware Setting

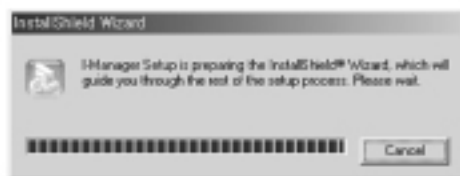
- Connect USB cable to the computer USB port and
- Connect other side of USB Cable to handy charger's USB port
- Combine & connect Motion-I base to the handy charger.
- If S/W installed, you can down load & up load the files with "Motion-I"



10 The install process of "I-Manager" S/W

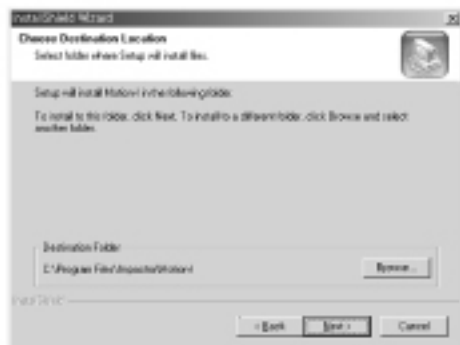


To install the CD Software of Motion i, place the supplied CD in CD-ROM drive of your PC, then it will start to setup the managing program of Motion i automatically.



Click "I-Manager" button, the Application S/W will be installed in your PC.

13



Then follow as below pictures instructed by selecting [NEXT]



Select installation folder and then click
[NEXT]