

L279 Wireless Laser Mouse

User's Guide



L279

4-in-1

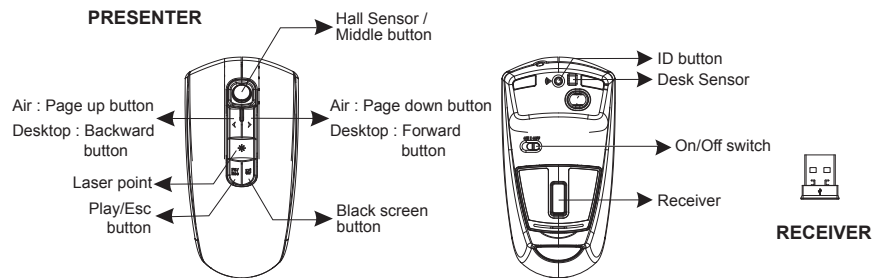
**Wireless Laser Mouse &
Remote Hall Senser &
Wireless Presenter &
Laser Pointer**

Introduction

Congratulations on your purchase of the most innovative 2.4GHz multi-functional wireless remote presenter mouse.

Features:

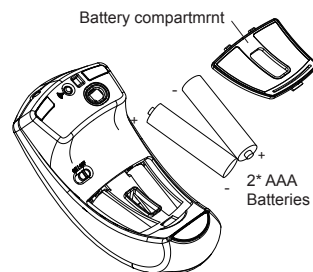
- Consolidating 2.4GHz wireless, laser and remote presenter technology.
- 4-in-1 design for use as a wireless laser mouse at the desktop, a Hall Sensor in the air, a laser pointer, and a remote presenter while making presentation toward audience.
- Ergonomic design for comfort use at the desktop and in the air.
- 16 channels with 2¹⁶ ID/per channel. No interference!
- 800/1600 dpi switchable.
- Wide range and long transmission distance for max. 10m.
- Auto-mode switch between mouse mode at desktop use and remote Hall Sensor in air use.
- Laser pointer available for presentation.
- Page up/down between presentation slides.
- Power On/Off switch to save battery life.
- Auto-Link Channel ID.
- 2* AAA Alkaline batteries included.



- * For use of page up and down between presentation slides with Power Point.
- * Auto-switching button function between page up / down and backward / forward , page up / down on desk top , backward / forward in the air.

1. Insert the Batteries

- Remove the battery compartment cover on the bottom case of the mouse
- Fit in the batteries accordingly to the diagram indicated in the battery cabinet.
- Close the battery compartments cover properly.
- Make sure the Power on-off switch on the bottom of the mouse is ON.
- The Low Power LED on the wheel bar will blink 3 seconds if the mouse power is on.



 A wrong battery placement may cause batteries overheat.

Note

The Presenter Mouse offers a strong power saving management function. Once the mouse accesses the sleeping mode, "to click any button of the mouse" is compulsory to wake it up

2. Connect the Receiver

- Power on your PC.
- Connect the receiver to USB port on PC.

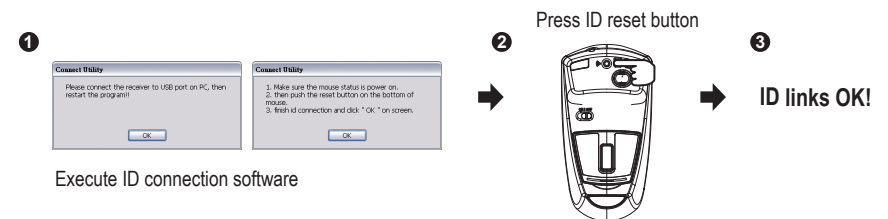
3. Establish Communication Between the Mouse and the Receiver

A. Auto-link mode:

The Presenter Mouse has auto-link function itself.

B. Manual mode:

If you find the communication channel does not connect well, you can use the software connection tool to re-connect the mouse & receiver to **reset a new channel ID**. You are able to get the software from the included diskette of the package or download from your local brand vendor's website.



4. Using Remote Presenter Mouse at the Desktop

The mouse provides great flexibility in how you control your computer and its laser sensor allows for precise tracking on any surface. (For optimal performance, avoid highly reflective glass or mirrored surfaces).

To use at the desktop:

- (1) Please follow the instructions of the "ID Setting".
- (2) Use the mouse likes a standard wireless laser desktop mouse.
- (3) Using the Hall Sensor on the top of the mouse as a 3D (directions) scroller.
- (4) The Backward / Forward Buttons on the top of the mouse are designed for browsing internet at the desktop.
- (5) To switch dpi, press left and right buttons simultaneously for 3 seconds, the red led will blink and dpi switch complete.

Tip

► For optimal battery life, avoid using the mouse on dark-colored surfaces.



The presenter may not perform properly while working on the some "dark color surfaces".

5. Using Remote Presenter Mouse in the Air

The mouse has no line of sight requirements so it's not necessary to point the device at the computer, receiver or monitor. Find a comfortable, relaxed position and move the cursor with easy wrist movements.

To use in the air :

- (1) Hold the mouse in a comfortable, relaxed position with your index finger on the bottom of the mouse and your thumb at the top of the mouse.
- (2) You can control the cursor movement by Hall Sensor using your thumb.
- (3) The Page up/ down Buttons on the top of the mouse are designed for use of page up and down between slides with Power Point.

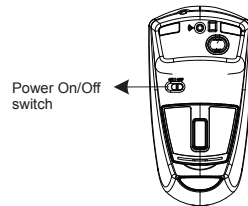
! Please avoid put your finger on the top of the desk sensor, and avoid using it under the strong light, it may cause function fault.

- (4) Press and hold the pointer button for pointing the subject, while making the presentation.

! While using laser pointer, please avoid laser light to direct contact with anyone's eyes. It may occur serious hurt to anyone's eyes !

6. Power On/Off

There is a Power On/Off switch designed to save the batteries power during non-use for a long period of time.



! Warning : Please do not touch hall sensor and switch to power on at the same time, otherwise the cursor will lose control. If the situation happen , please swith to power off then poewer on again.

7. Replace the new batteries

Please replace a pair of new batteries and follow the instruction 1.

! Note

- The red LED on the Hall Sensor bar is the low batteries power indicator. It indicates that batteries inside the mouse are needed to be replaced.

❖ Trouble Shooting

- (1) Make sure you have connected the receiver correctly to the computer's USB port.
- (2) For the supreme performance, we suggest you to locate the receiver with a distance from other electrical devices, such as the computer, the computer monitor or external storage drives.

- (3) Make sure you have set the communication between the receiver and the mouse. Refer to the instruction 3 in this manual.
- (4) Some system devices might conflict with the mouse. Confirm the IRQ/address settings of these devices for conflicts, and change the settings as required.
- (5) Make sure that you are not working the mouse on glossy or reflective surfaces.
- (6) Try unplug and re-connect the receiver to your computer.

❖ Battery use reminders

- (1) Remove worn-out batteries from equipment immediately and dispose of promptly.
- (2) Keep all batteries (used or new) out of the reach of children.
- (3) To have the batteries with a regular check and replace new batteries if not used for a long time.
- (4) Never dispose of batteries in fire, as they could explode.
- (5) Always replace all the batteries at the same time. Mixing old and new batteries or mining types (such as alkaline with zinc carbon) will reduce overall performance and could cause leakage or rupture.
- (6) Do not mix different types of batteries (e.g. Ni-MH, NiCd, alkaline, and etc) in the mouse.
- (7) Remove batteries from the electrical device if the device is not going to be used for a long time.
- (8) If the performance of the batteries decreases substantially, it is time to replace the batteries.

FCC Statement

This equipment has been tested and found to comply with the limits for a Class B digital device, pursuant to part 15 of the FCC rules. These limits are designed to provide reasonable protection against harmful interference in a residential installation. This equipment generates uses and can radiate radio frequency energy and, if not installed and used in accordance with the instructions, may cause harmful interference to radio communications. However, there is no guarantee that interference will not occur in a particular installation. If this equipment does cause harmful interference to radio or television reception, which can be determined by turning the equipment off and on, the user is encouraged to try to correct the interference by one or more of the following measures:

- Reorient or relocate the receiving antenna.
- Increase the separation between the equipment and receiver.
- Connect the equipment into an outlet on a circuit different from that to which the receiver is connected.
- Consult the dealer or an experienced radio/TV technician for help.

This device complies with Part 15 of the FCC Rules. Operation is subject to the following two conditions:

- (1) This device may not cause harmful interference, and
- (2) This device must accept any interference received, including interference that may cause undesired operation.

To assure continued compliance, any changes or modifications not expressly approved by the party responsible for compliance could void the user's authority to operate this equipment.

(Example-use shielded interface cables when connecting to computer or peripheral devices.)