

2.4GHz
Wireless Presenter



P06
User's Guide

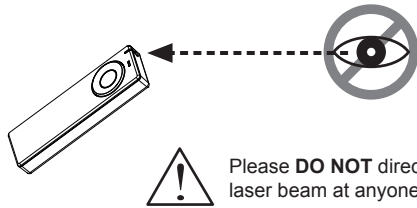
- 2-in-1**
- Wireless Presenter
 - Laser Pointer

INTRODUCTION

Thank you for the purchase of the most innovative 2.4GHz wireless presenter.

❗ Safety Notice

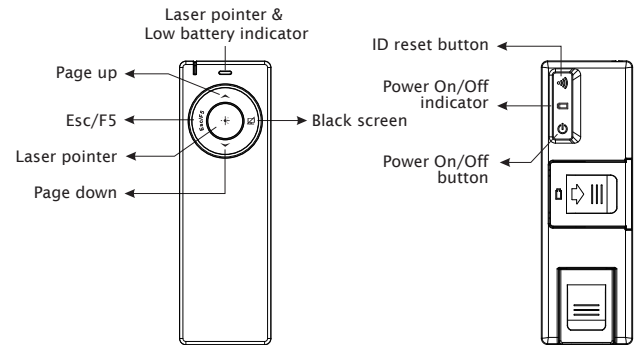
- This product complies with IEC 60825-1, Class II laser product.
- Your product complies with FCC and CE rules.



Features

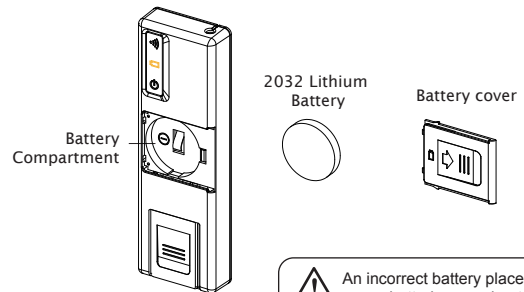
- Consolidating 2.4GHz wireless presenter technology.
- 2-in-1 design: a laser pointer, and a remote presenter while users have presentation toward audience.
- 16 channels with 2²⁴ ID. No interference!
- Wide range and long transmission distance of Max. 10M.
- Page up / down between presentation slides.
- Laser pointer
- Presentation buttons: Slide forward / back, Black screen, Esc/F5
- Power on / off button for saves battery power.
- Plug and Play. No need to install driver.
- Storable wireless receiver.
- Smart-Link channel ID.

Presenter



1. Insert the batteries

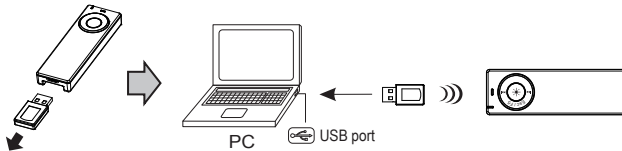
- Open the battery cover on the back of the presenter
- Fit in the battery according to the diagram indicated in the battery compartment.
- Close the battery cover.



❗ An incorrect battery placement may cause batteries over heat.

2. Connect the presenter and the receiver

- A. Pull the receiver from the bottom of presenter.
- B. Plug receiver into the USB port of your PC



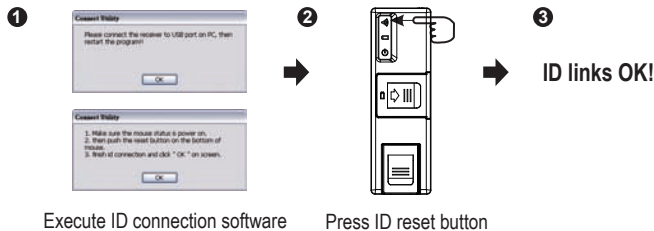
3. Establish communication between the presenter and the receiver

A. Auto-link mode:

The presenter has auto-link function itself.

B. Manual mode:

If you find the communication channel does not connect well, you can use a software connection tool to re-connect the presenter & receiver **to reset a new channel ID**. You are able to download the software from your local brand vendor's website.



4. Operation

Presentation Buttons

● ESC/F5 switchable button :

Press ESC/F5 to escape/play Power Point

● Black Screen :

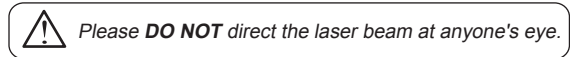
Press the Black Screen button, the screen will be black during the presentation. Press any key to return.

● Page up / down :

Press Page Up / Down button to return or go to the next slide of Power Point.

● Laser pointer :

Use laser pointer to point what a user wants to point at the monitor. (Laser pointer indicator will be continuous on when you press laser pointer button)



Please **DO NOT** direct the laser beam at anyone's eye.

5. Power On / Off

Power on : Press power button(Ⓟ) 3 seconds to power on and LED will be continuous on 6 seconds.

Power off : Press power button(Ⓟ) 3 seconds to power off and LED will flash.

❖ Troubleshooting

- a. Make sure you have connected the receiver correctly to the computer's USB port.
- b. For the best performance, we suggest you to locate the receiver with a distance from other electrical devices, such as the computer, the computer monitor or external storage drives.
- c. Make sure you have set the communication between the receiver and the presenter. Refer to the channel setting instruction (refer to No.3) in your manual.
- d. Try unplugging then reconnecting the receiver cable to your computer.

❖ Battery use reminders

- (1) Keep all batteries (used or new) out of the reach of children.
- (2) To have the battery with a regular check and replace new battery if not used for a long time.
- (3) Remove battery from the electrical device if the device is not going to be used for a long time.
- (4) If the performance of the batteries decreases substantially, it is the right time to replace the batteries.

Federal Communication Commission Interference Statement

This equipment has been tested and found to comply with the limits for a Class B digital device, pursuant to Part 15 of the FCC Rules. These limits are designed to provide reasonable protection against harmful interference in a residential installation.

This equipment generates, uses and can radiate radio frequency energy and, if not installed and used in accordance with the instructions, may cause harmful interference to radio communications. However, there is no guarantee that interference will not occur in a particular installation. If this equipment does cause harmful interference to radio or television reception, which can be determined by turning the equipment off and on, the user is encouraged to try to correct the interference by one of the following measures:

- Reorient or relocate the receiving antenna.
- Increase the separation between the equipment and receiver.
- Connect the equipment into an outlet on a circuit different from that to which the receiver is connected.
- Consult the dealer or an experienced radio/TV technician for help.

FCC Caution :

To assure continued compliance, any changes or modifications not expressly approved by the party responsible for compliance could void the user's authority to operate this equipment. (Example - use only shielded interface cables when connecting to computer or peripheral devices).

FCC Radiation Exposure Statement

This device complies with Part 15 of the FCC Rules. Operation is subject to the following two conditions:

- (1) This device may not cause harmful interference, and
- (2) This device must accept any interference received, including interference that may cause undesired operation.