

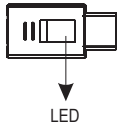
Introduction

Congratulations on your purchase of the most innovative wireless mini mouse. With an incredible sensitivity to surface details and high tracking speed than other mice, the mouse can track reliably even on tricky polished or wood-grain surfaces. It offers even more advance that will make you more productive and more comfortable.

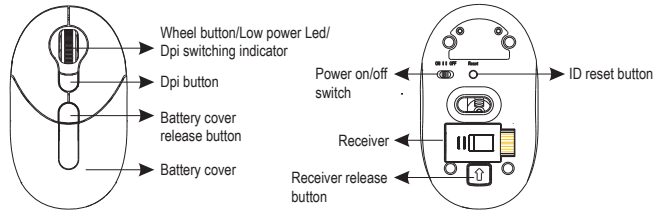
Features

- 2.4GHz (distance 6~8m), 16 Channels/4096 ID
- Using state-of-art technology. High tracking speed and sensitivity.
- 4-way scrolling.
- Storable mini receiver
- Longer battery life -- 3~4 months.
- Auto-Link, Plug and Play! No need to set the channel ID.
- Power on/off switch
- Data report rate : 125 Report/Sec.
- 800/1600 dpi switchable button.
- 2*AAA Alkaline batteries included.

Receiver



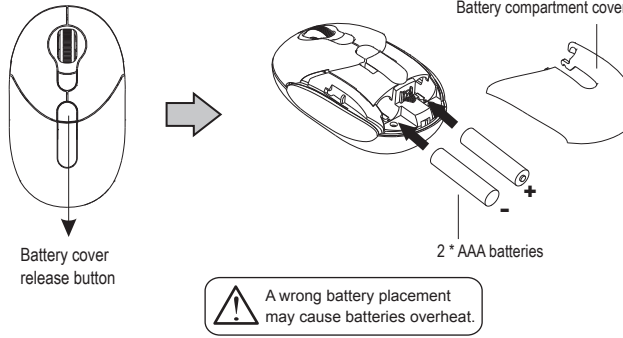
Mouse



A. Hardware Installation

1. Insert the batteries

- Take out the receiver on the bottom case first, press the battery cover release button on the bottom of the mouse which is under the receiver.
- Remove the battery compartment cover on the top case of the mouse.
- Fit in the batteries accordingly to the diagram indicated in the battery cabinet.
- Close the battery compartments cover properly.
- Make sure the Power on-off switch on the bottom of the mouse is ON.
- The Low Power LED in the wheel bar will light up 3 seconds if the mouse.

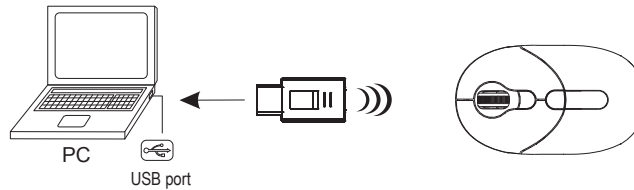


Note

- > The unit offers a strong power saving management. Once the mouse accesses the sleeping mode, "to click any button of the mouse" is compulsory to wake it up.
- > **Power on/off:** There is a Power on/off switch designed to save the batteries power while non-usage of a longer period.
- > Users can push DPI button to change the resolution. The LED on scroll wheel will be flashed when dpi has been successfully switched.

2. Connect the receiver

- Turn on your PC.
- Connect the receiver to USB port on PC



3. Communication : The mouse & the receiver

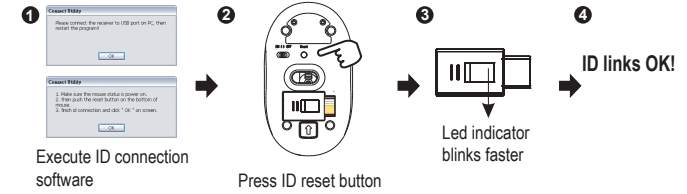
The 2.4Ghz RF mouse features a dual-way transmission technology which enables the mouse and the receiver auto-communication.

A. Auto-link mode

- Make sure the Power on-off Switch on the bottom of the mouse is ON.
- Operate the mouse, and the LED in the receiver will blink fast. Now the mouse and the receiver is auto-linked successfully.

B. Manual mode

If you find the communication channel does not connect well, you can use the software connection tool to re-connect the mouse & receiver to **reset a new channel ID**. You are able to get the software from the included diskette of the package or download from your local brand vendor's website.



Note

- > While the mouse is working, if encountering any interference, the mouse and the receiver will automatically source out and transfer to another free channel. During the transferring, the cursor movement may have a second delay.

4. Replace the new batteries

Please replace a pair of new batteries and follow the previous instructions. (2, 3)

Note

- > The red LED on the scroll wheel is the low batteries power indicator. It indicates that batteries inside the mouse are needed to be replaced.

5. Operation

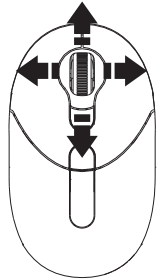
4-Way Scrolling:

a. Vertical Scrolling

Roll wheel up to scroll up; roll wheel down to scroll down.

b. Horizontal Scrolling

Hold the wheel to left to scroll left; hold the wheel to right to scroll right. Release wheel to stop scrolling function.



Note

- > The 4-Way scrolling function is only effective under successful installation of the original mouse driver. The driver is an optional item included in the package or it can be downloaded from the website of your local brand vendor.
- > To function the 4-way scrolling in some applications in Window VISTA such as Word, Excel, Powerpoint and etc., the driver should be installed.

B. Driver Installation

The mouse features plug & play. It is not necessary to install the driver to operate the mouse. The driver is an optional item included. However if the model purchased is with 4-Way Scrolling function, you may require the mouse software driver to make the 4-Way scrolling function effective.