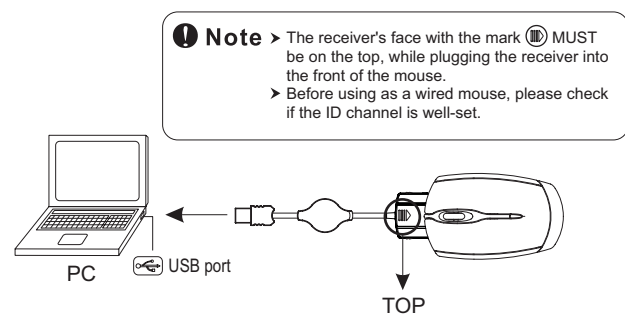


5. Using as a Wired Mouse

In addition to be a wireless, the mouse will be used as a regular optical mouse.

After setting well the ID channel, plug the receiver into the front side of the mouse. According to the diagram introduction. Then, pull out the retractable cable and plug it to an USB port, the mouse become a wired optical mouse.

When the receiver is plug into the socket, the battery is charging when you're using the mouse.



❖ Troubleshooting

- Make sure you have connected the receiver correctly to the computer's USB port.
- For the best performance, we suggest you to locate the receiver with a distance from other electrical devices, such as the computer, the computer monitor or external storage drives.
- Make sure you have set the communication between the receiver and the mouse. Refer to the channel setting instruction (refer to No.3) in your manual.
- Some system devices might conflict with the mouse. Confirm the IRQ/address settings of these devices for conflicts, and change the settings as required.

- Make sure that you are not working the mouse on glossy or reflective surfaces.
- Try unplugging then reconnecting the receiver cable to your computer.

❖ Battery use reminders

- Please make sure the batteries used for recharging are "Rechargeable Batteries"
- Remove worn-out batteries from equipment immediately and dispose of promptly.
- Keep all batteries (used or new) out of the reach of children.
- To have the batteries with a regular check and replace new batteries if not used for a long time.
- Never dispose of batteries in fire, as they could explode.
- Always replace all the batteries at the same time. Mixing old and new batteries or mixing types (such as alkaline with zinc carbon) will reduce overall performance and could cause leakage or rupture.
- If the lower power indicator is blinking, please charge the battery through the USB charging cable immediately. Otherwise, you'll need to re-set the ID and charge the batteries more than 6 hours.
- Do not mix different types of batteries (e.g. Ni MH, NiCd, alkaline, and etc) in the mouse.
- Remove batteries from the electrical device if the device is not going to be used for a long time.
- If the performance of the batteries decreases substantially, it is time to replace the batteries.

This device complies with Part 15 of the FCC Rules. Operation is subject to the following two conditions: (1) this device may not cause harmful interference, and (2) this device must accept any interference received, including interference that may cause undesired operation

FCC NOTE:

The manufacturer is not responsible for any radio or TV interference caused by unauthorized modifications to this equipment. Such modifications could void the user's authority to operate the equipment.

2 in 1 Wired / Wireless Mini Optical Mouse

Rechargeable



User's Guide

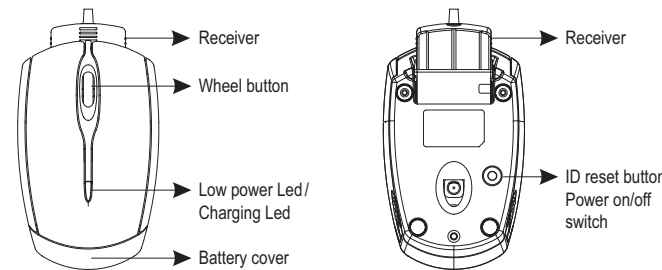
All other brands and trademarks are the properties of their respective owners.
The product specifications are subject to change without notice.

Introduction

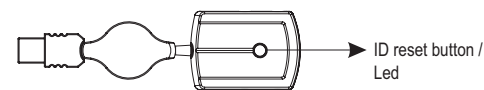
Congratulations on your purchase of the World first 2-in-1 Mini wired/wireless rechargeable optical mouse, which includes optical technology, the radio frequency technology. The mouse can be used as a wireless mouse, and also as a wired mouse.

- The world first patented wired + wireless mouse
- 27 MHz RF
- Plug the receiver to the front of the mouse to be a wired mouse
- Battery's recharged when the mouse is used as a wired mouse
- Plug and Play! No need to set the channel ID
- 2*AAA charging batteries included
- 800 dpi

Mouse



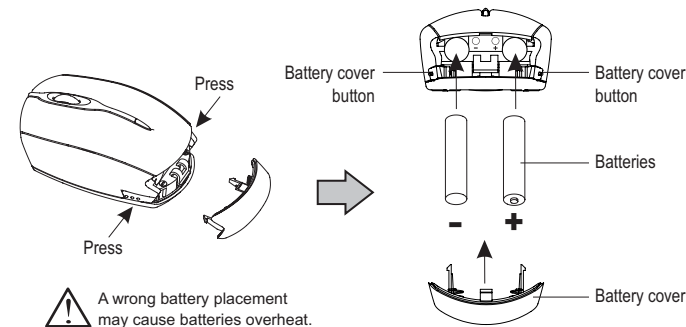
Receiver



Installing Instruction

1. Insert the batteries

- Remove the battery compartment cover on the back by pressing the battery cover button of the mouse.
- Fit in the batteries according to the diagram indicated in the battery cabinet.
- Close the battery compartment cover.

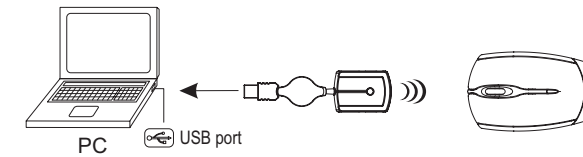


Note

- It is a MUST to fully recharge the rechargeable batteries contained in this package at the first-time use.
- The unit offers a strong power saving management. Once the mouse accesses the sleeping mode, "to click any button of the mouse" is compulsory to wake it up.
- **Power on/off:**
 - To save the power, please turn off the mouse by pressing and holding the on/off switch on the bottom of the mouse with 3-5 seconds.
 - To turn on the power, just repeat the same step as above again.

2. Connect the receiver

- Turn off your PC.
- Connect the receiver cable to USB port on PC
- Turn on your PC



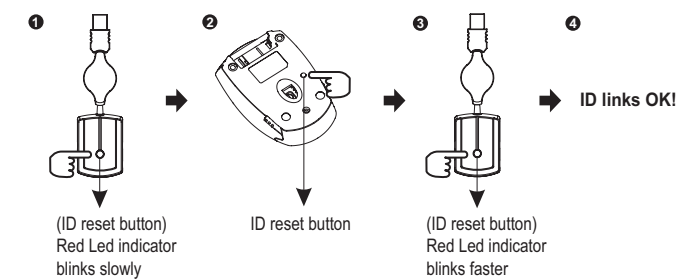
3. Establish communication between the mouse and receiver

A. Auto-link mode:

The mouse has auto-link function itself.

B. Manual mode:

- Please reset the ID when first time use if necessary.
- Press the ID reset button on the top side of the receiver, and note the red LED will blink slowly.(pic.1)
- Press the ID change button on the bottom of the mouse to set a new ID. (pic.2) The red LED indicator will blink at a faster rate when an identical ID is located.(pic.3)
- Press any button of the mouse to confirm the ID matching The red LED indicator on the receiver will blink any time the mouse sends it a signal.



4. Recharge the batteries

To charge the battery, plug the receiver into the front side of the mouse, according to the diagram instruction. Then, pull out the retractable cable and plug it to an USB port, the mouse become a wired optical mouse. When the receiver is plug into the socket, the battery is charging when you're using the mouse.

Note

- The red LED on the top cover of the mouse is a low batteries power indicator. It indicates that batteries inside the mouse need to be recharged.
- If the batteries are used up, you may need to take out the batteries, reinstall again, and reset the ID to recharge it.
- The mouse surface may be warm during charging process. It is a normal phenomenon.

★ Mouse LED Display status

- Green LED Light ON - Recharging
- Green LED Light OFF - Recharging completed
- Red LED flashing - Low Power

After Recharging

- Disconnect the recharging cable from the mouse when charging is completed.
- Make sure the communication between the mouse and the receiver is still available after completing recharging batteries. If not, please refer to the channel setting instruction in the manual to reset the communication.