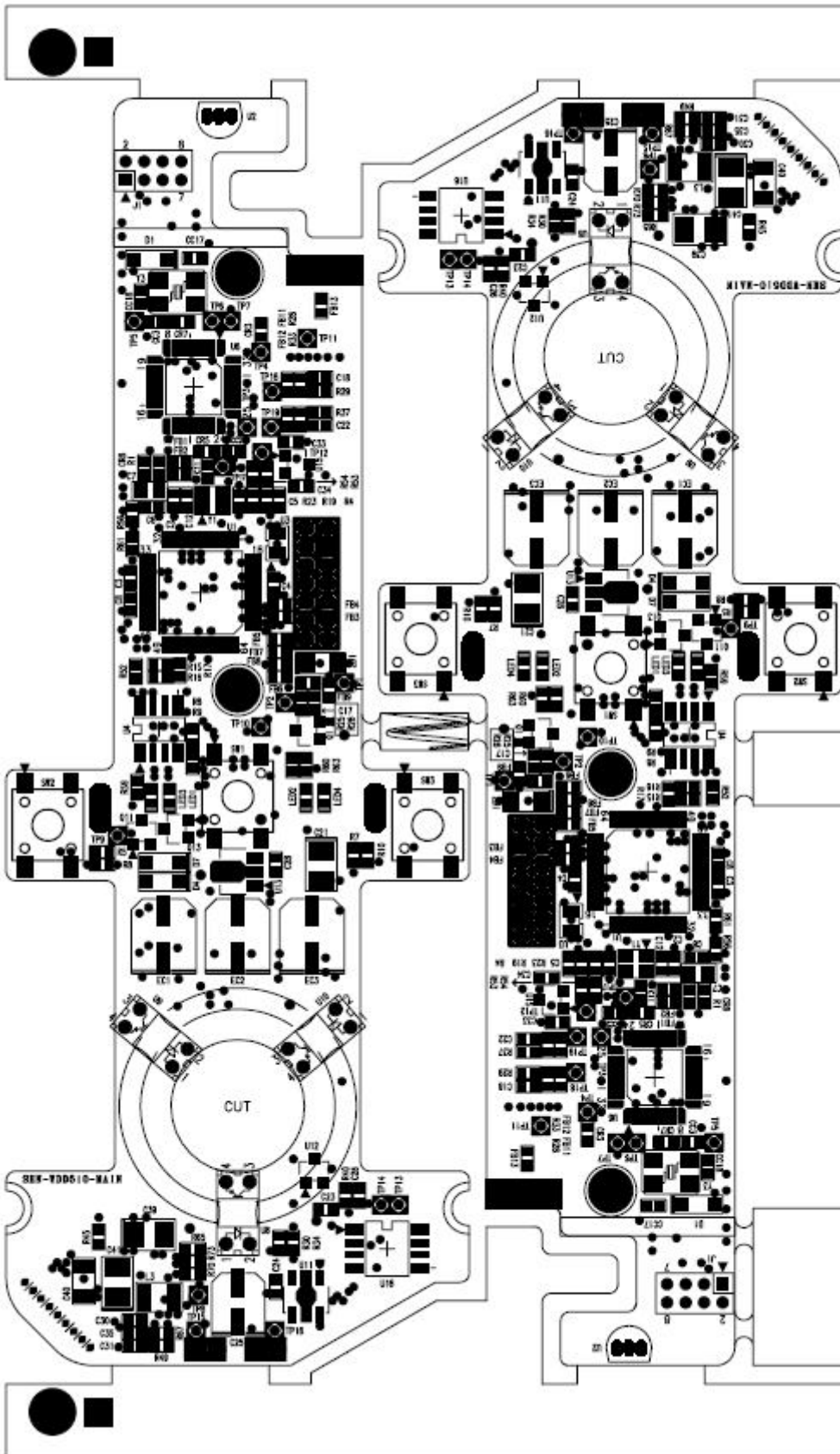
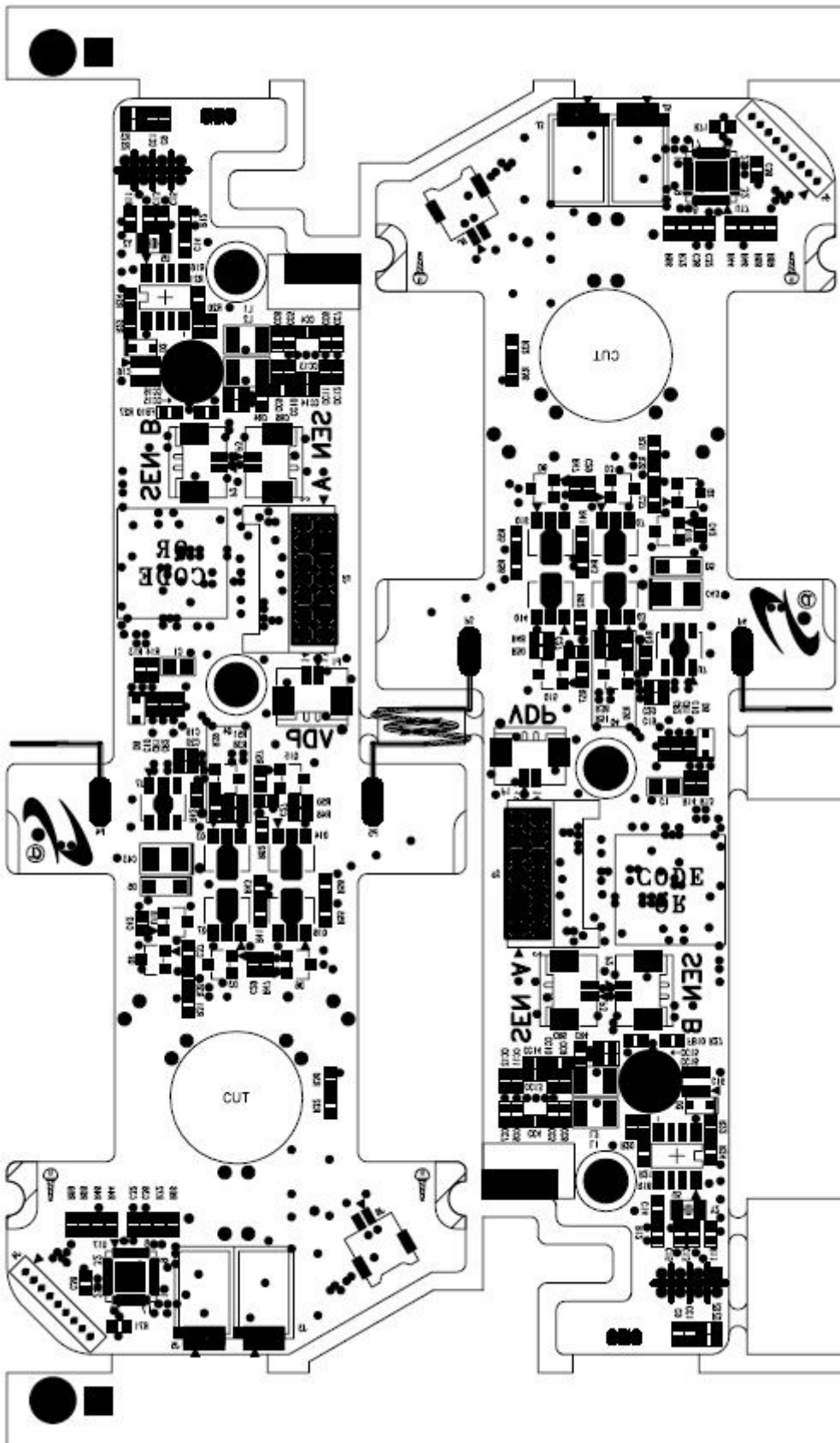


1. Main PCB

1.1 Main PCB Top

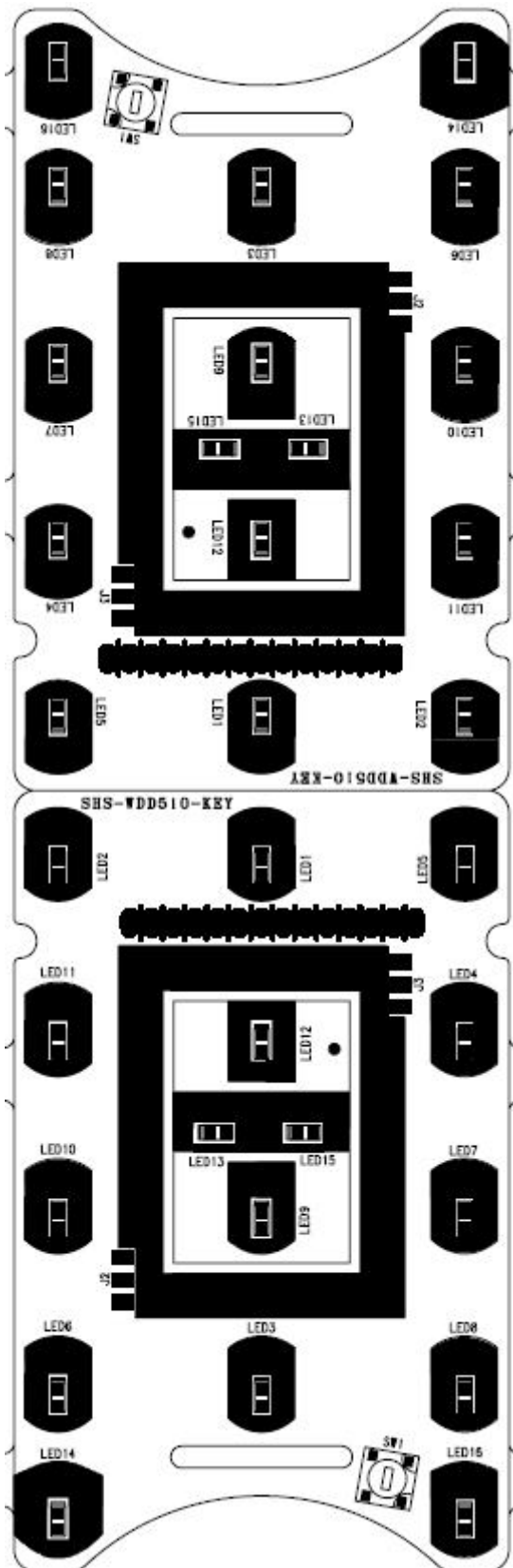


1.2 Main PCB Bottom

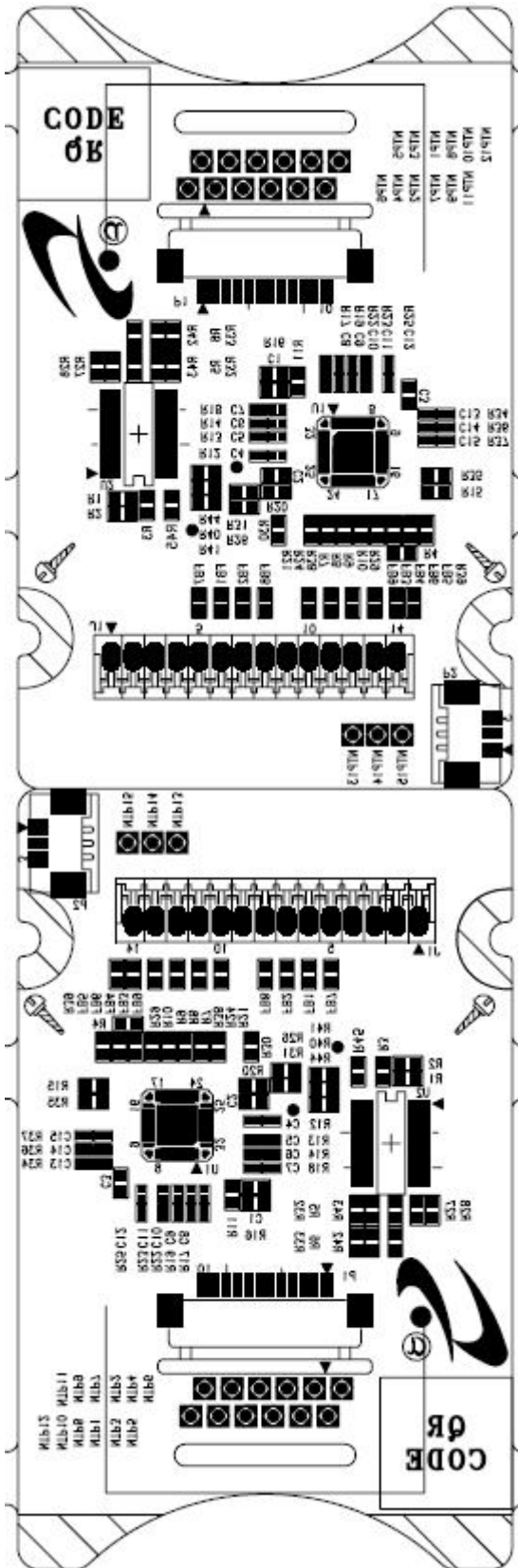


2. Key PCB

2.1 Key PCB Top



2.2 Key PCB Bottom

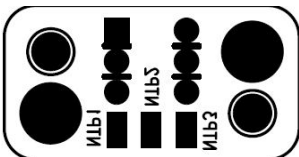


3. TAMPER PCB

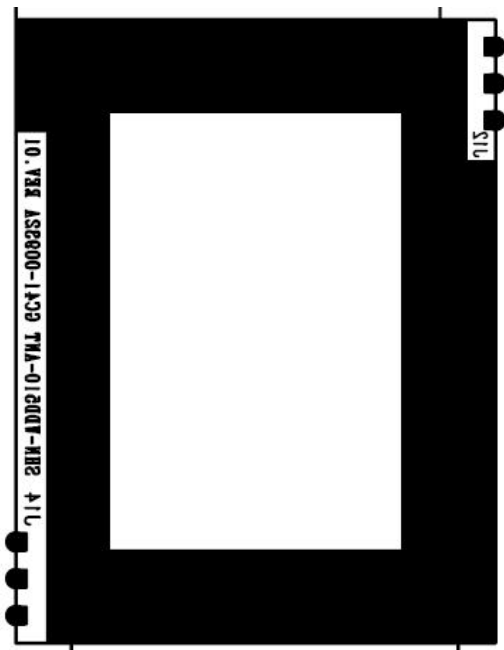
3.1 TAMPER PCB Top



3.2 TAMPER PCB Bottom



4. ANT PCB



5. TOUCH PCB

