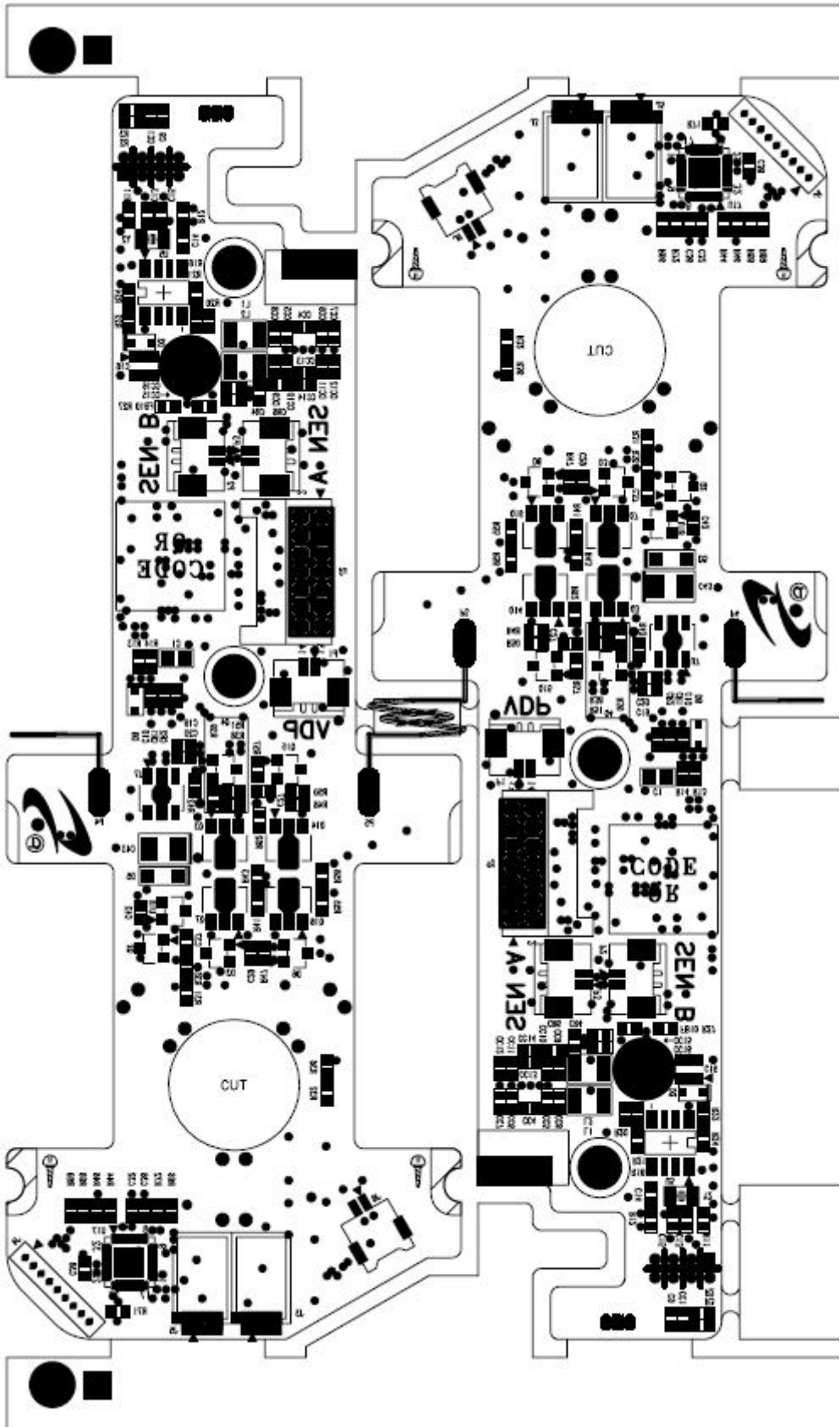
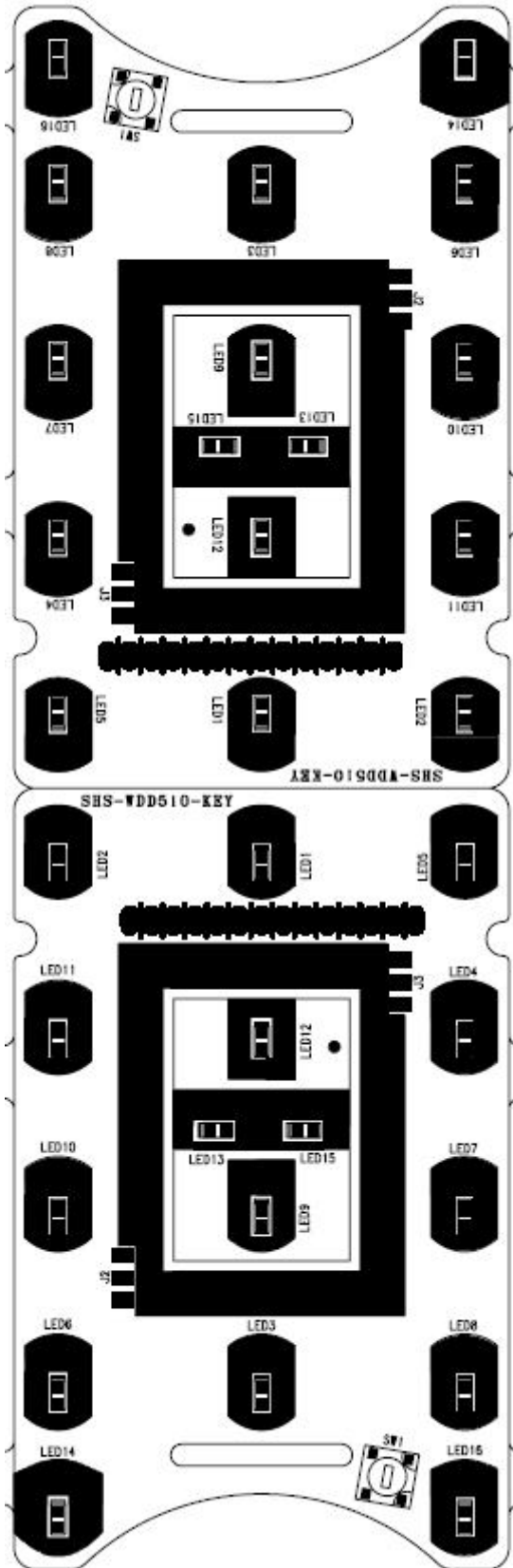


1.2 Main PCB Bottom



2. Key PCB

2.1 Key PCB Top

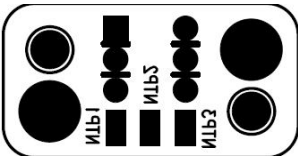


3. TAMPER PCB

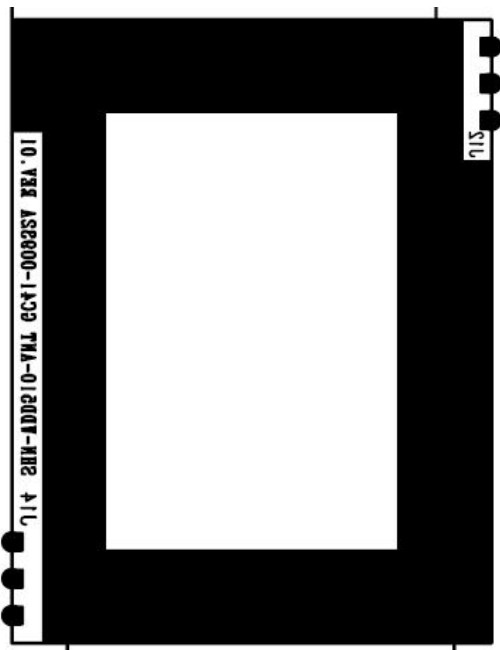
3.1 TAMPER PCB Top



3.2 TAMPER PCB Bottom

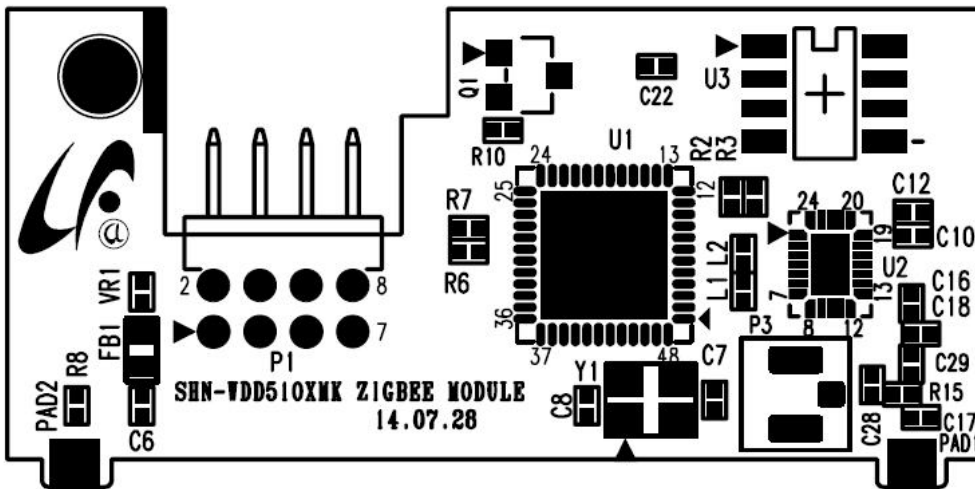


4. ANT PCB



5. Zigbee PCB

5.1 Zigbee PCB Top



5.2 Zigbee PCB Bottom

