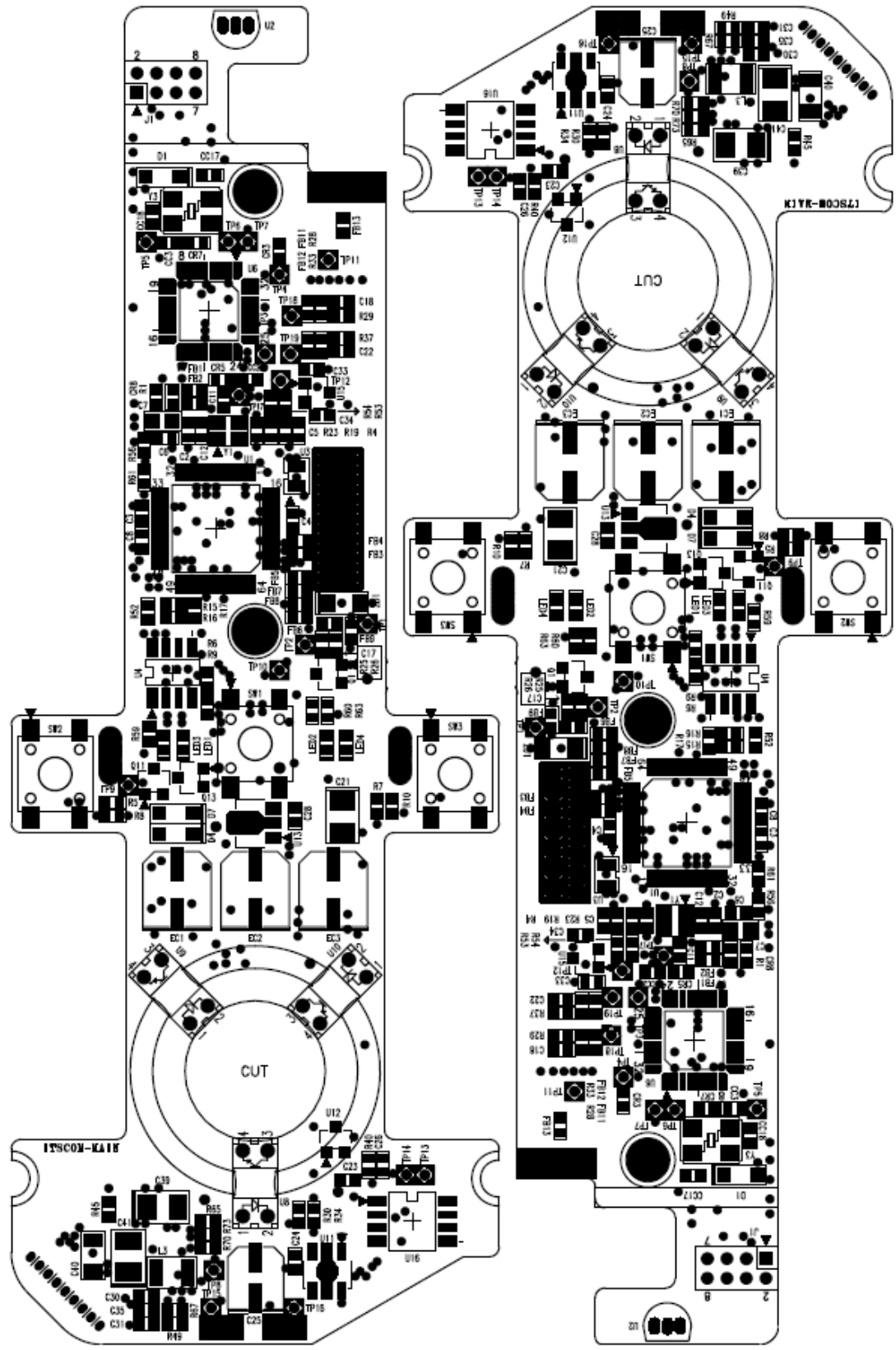
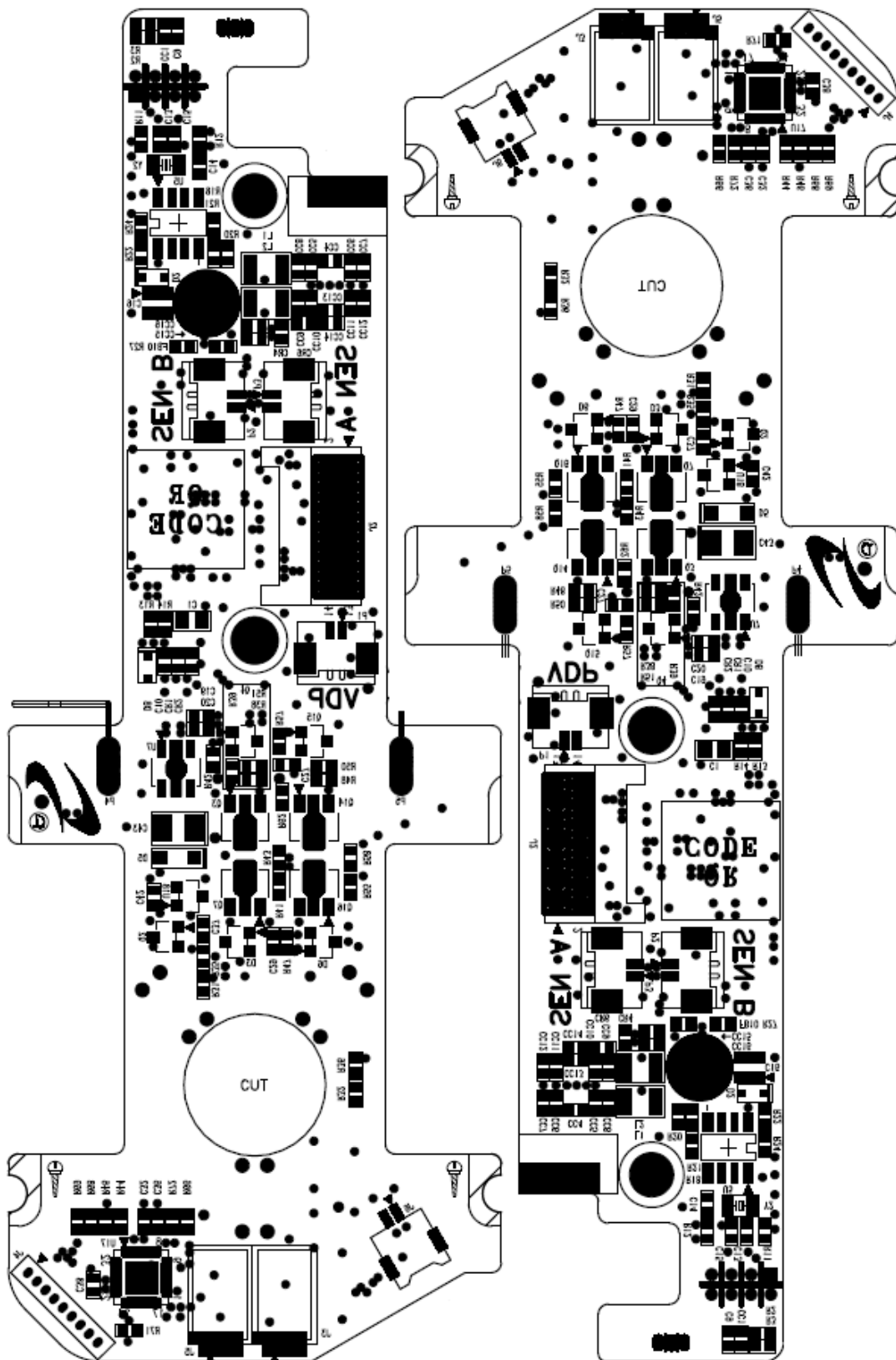


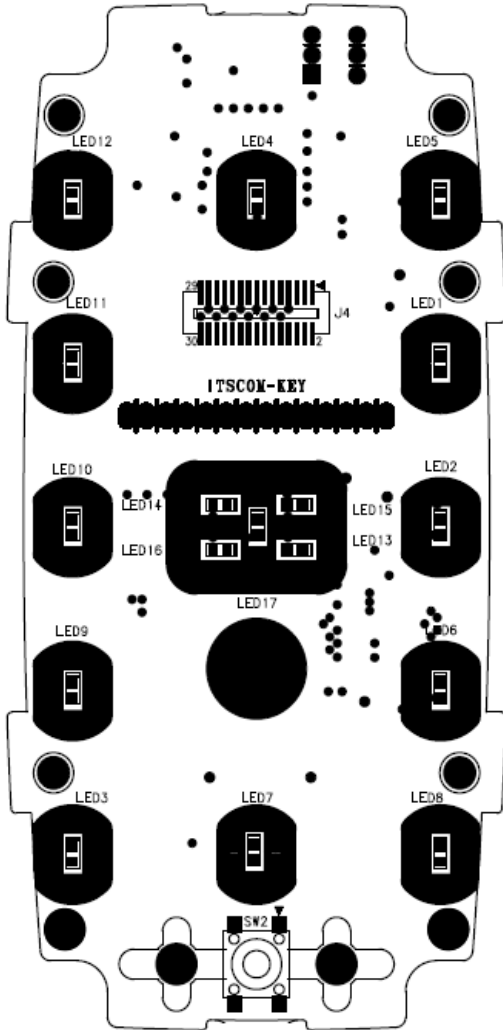
- 1. Main PCB
- 1.1 Main PCB Top



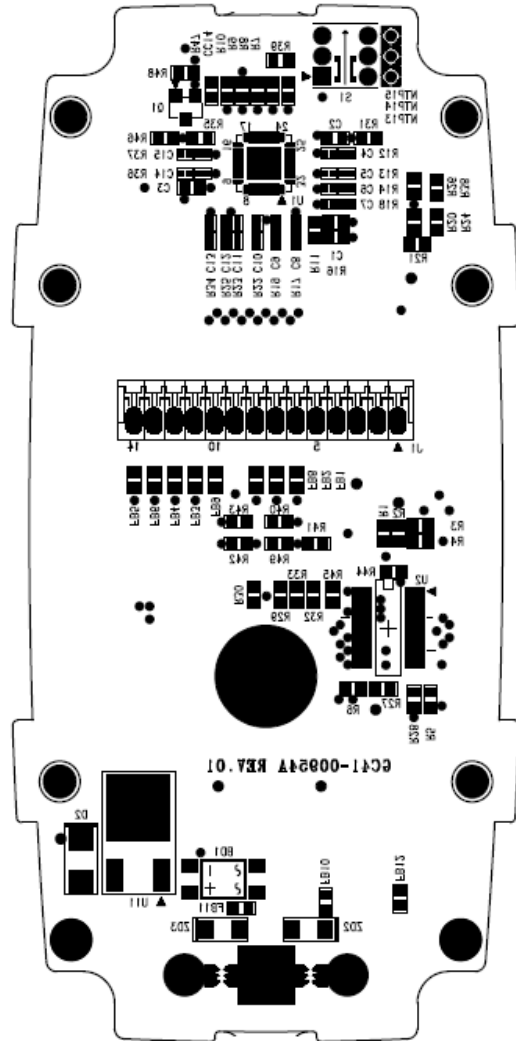
1.2 Main PCB Bottom



2. Key PCB

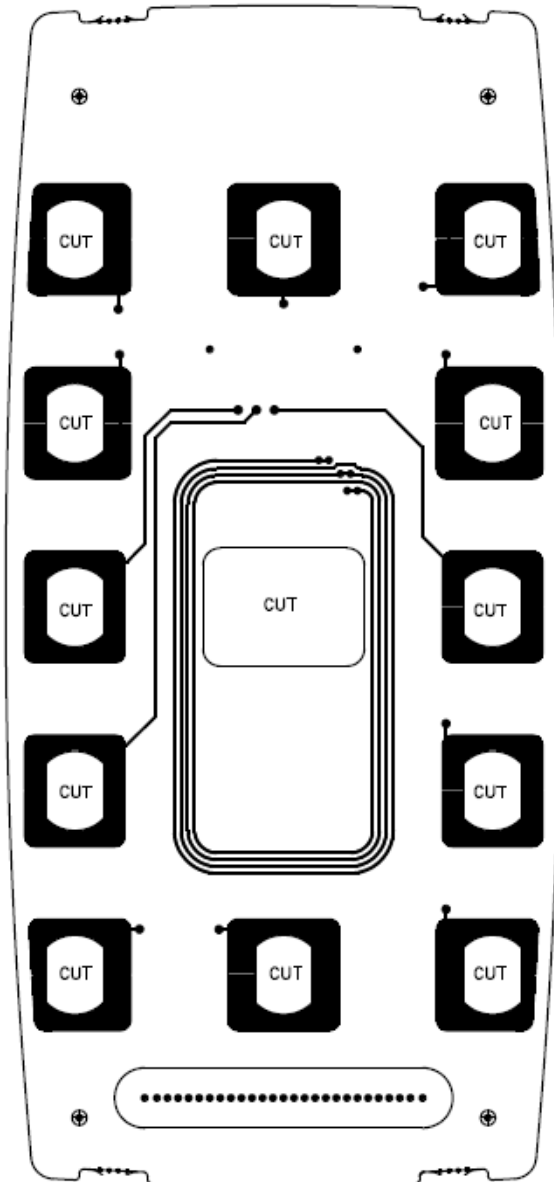


2.1 Key PCB Top

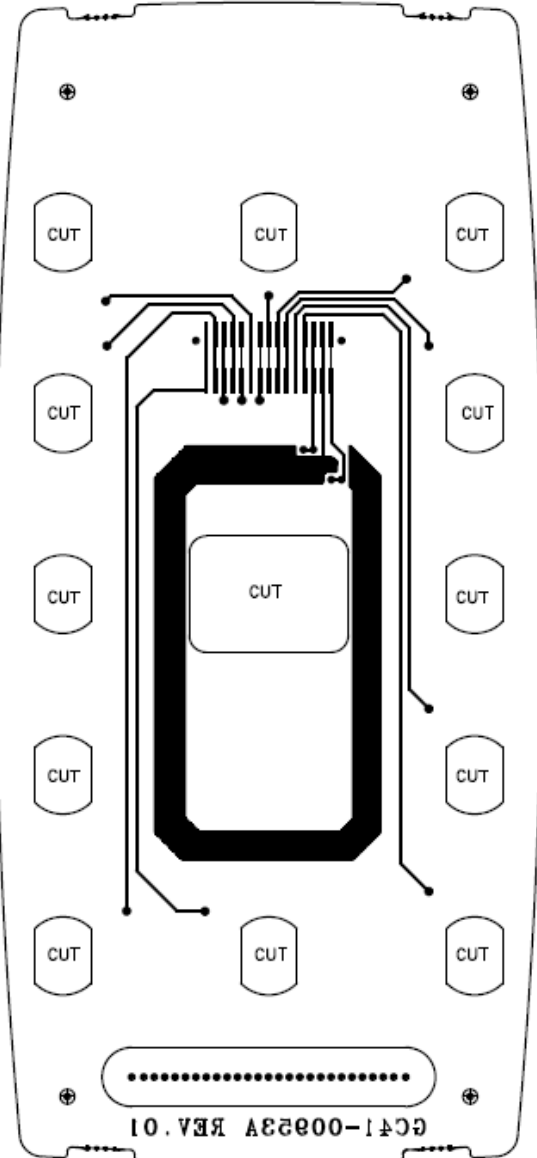


2.2 Key PCB Bottom

3. ANT PCB

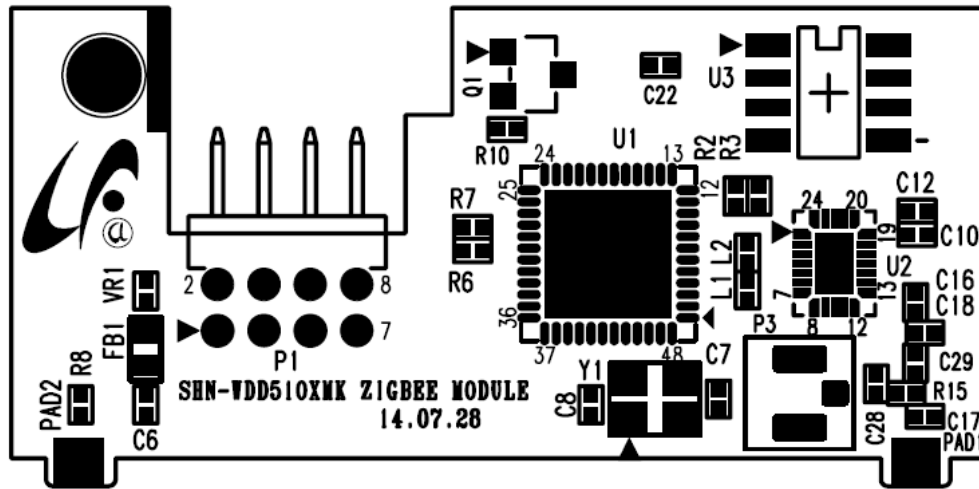


3.1 ANTPCB Top

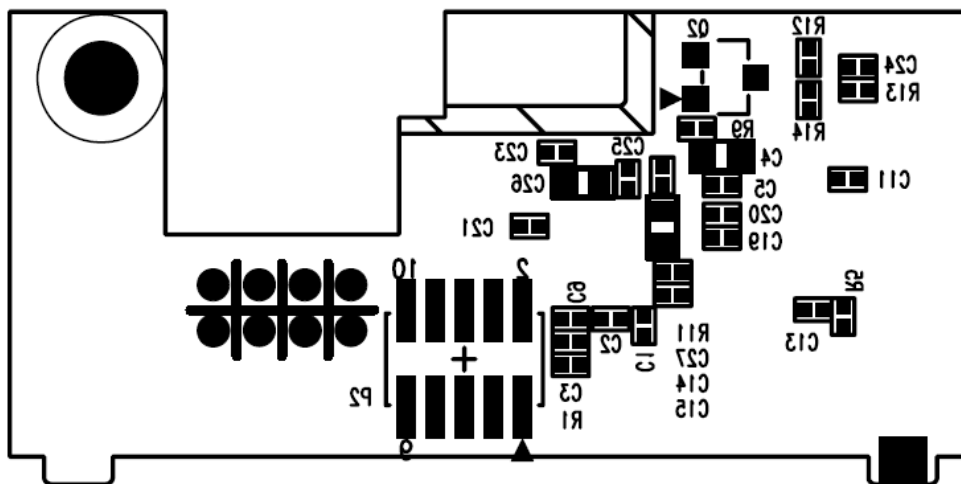


3.2 ANT PCB Bottom

5. Zigbee PCB



5.1 Zigbee PCB Top



5.2 Zigbee PCB Bottom