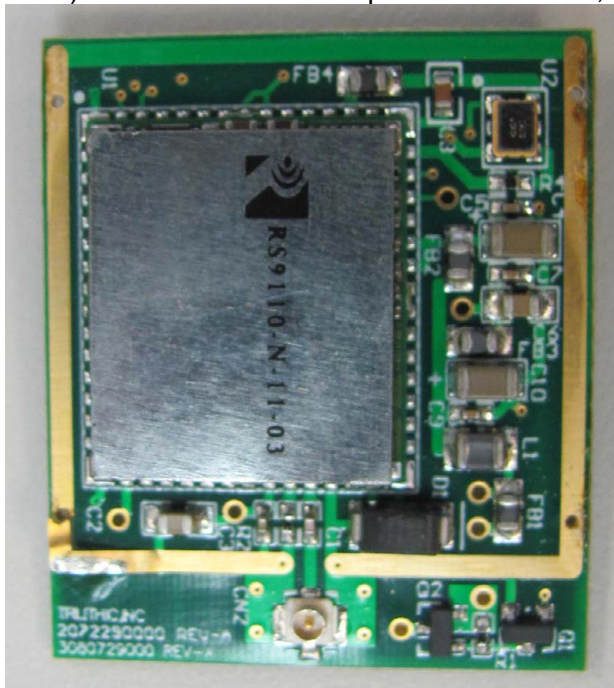


Internal EUT Photographs

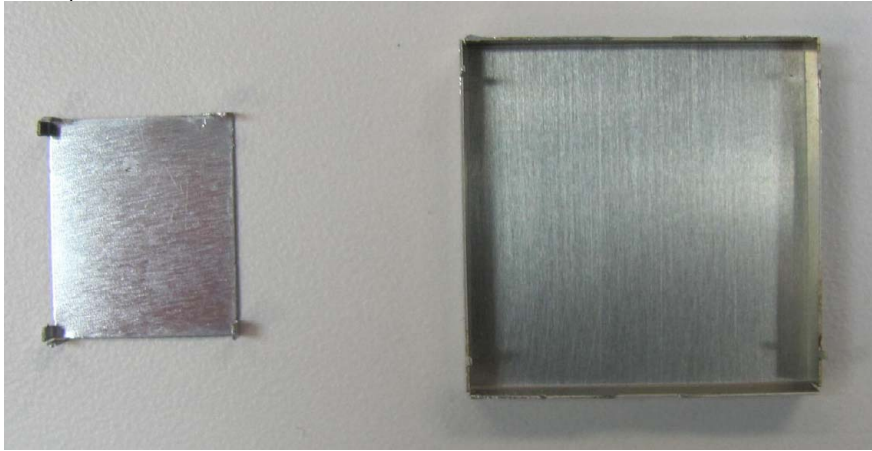
1) Wi-Fi Module with both Shields



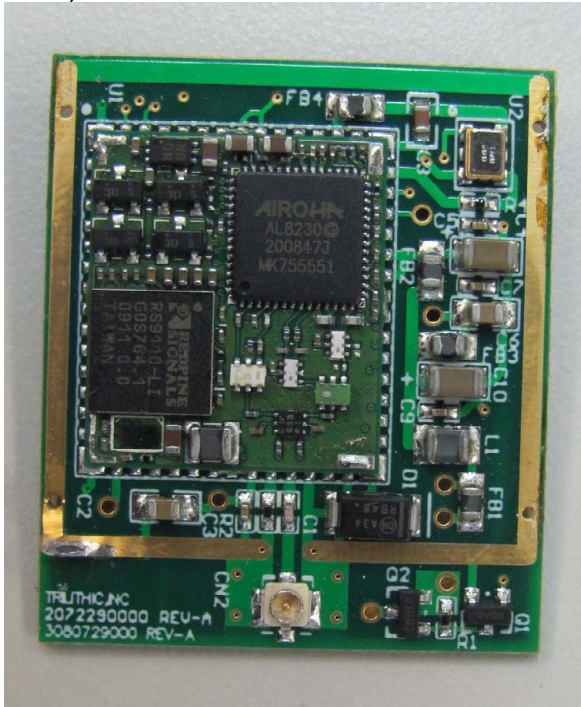
2) Wi-Fi Module with top Shield removed; still has inner shield.



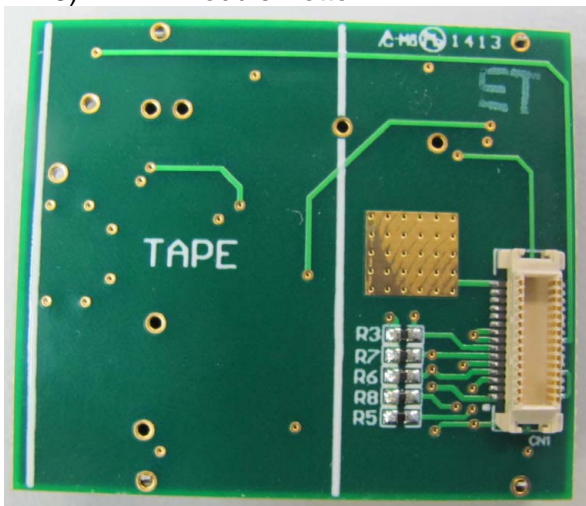
3) Inner and outer Shield



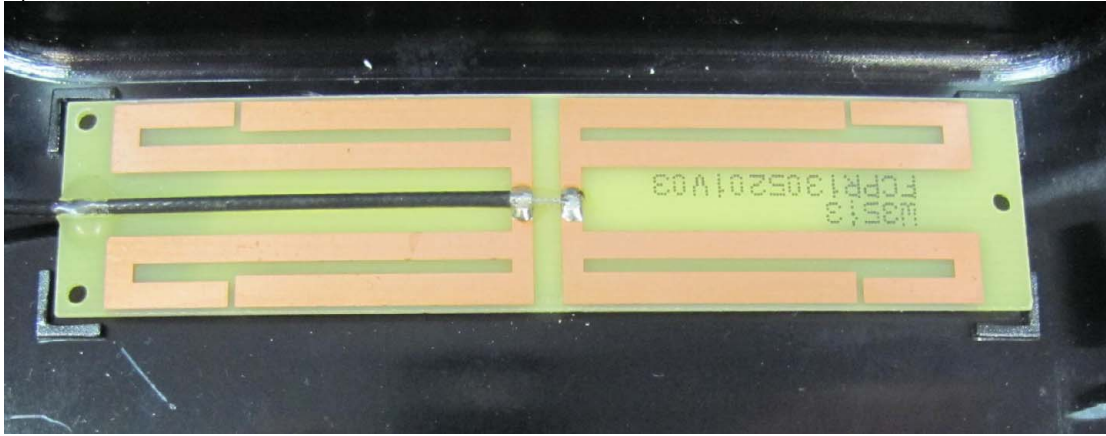
4) Wi-Fi Module with both Shields removed.



5) Wi-Fi Module Bottom

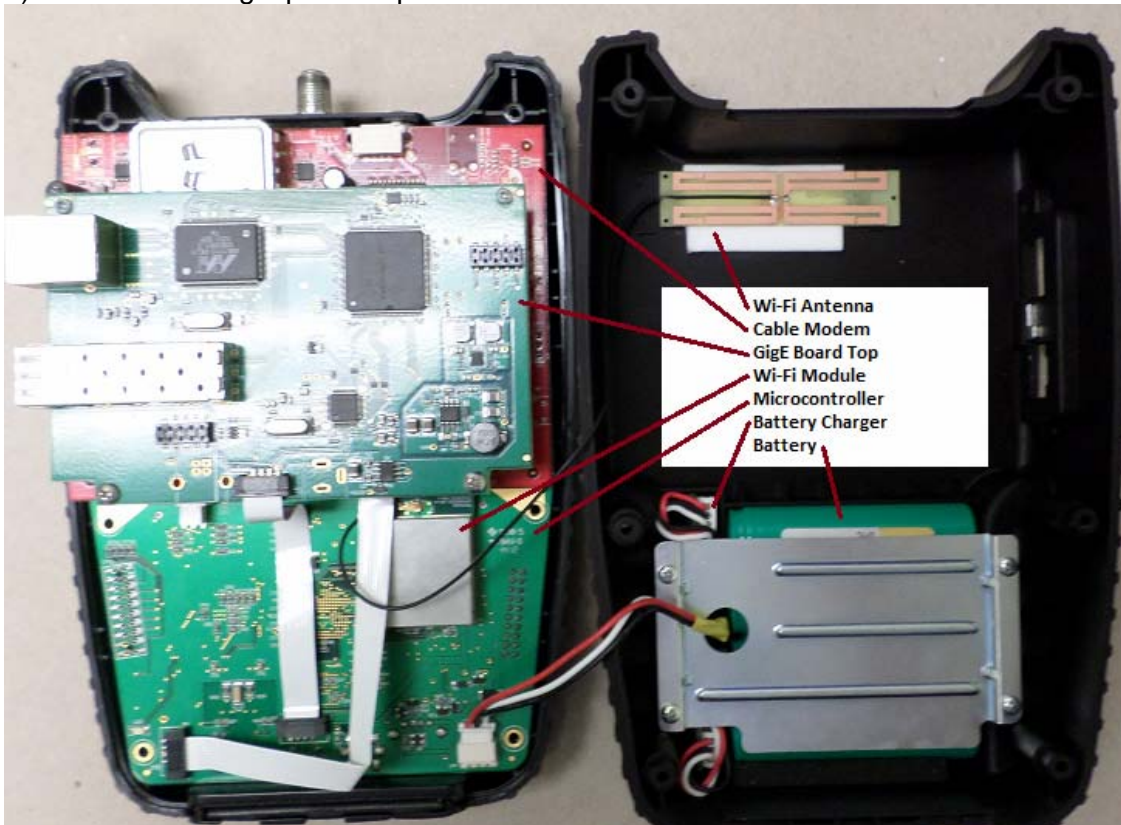


6) Wi-Fi Antenna



Host system

7) Plastic Housing Opened Up



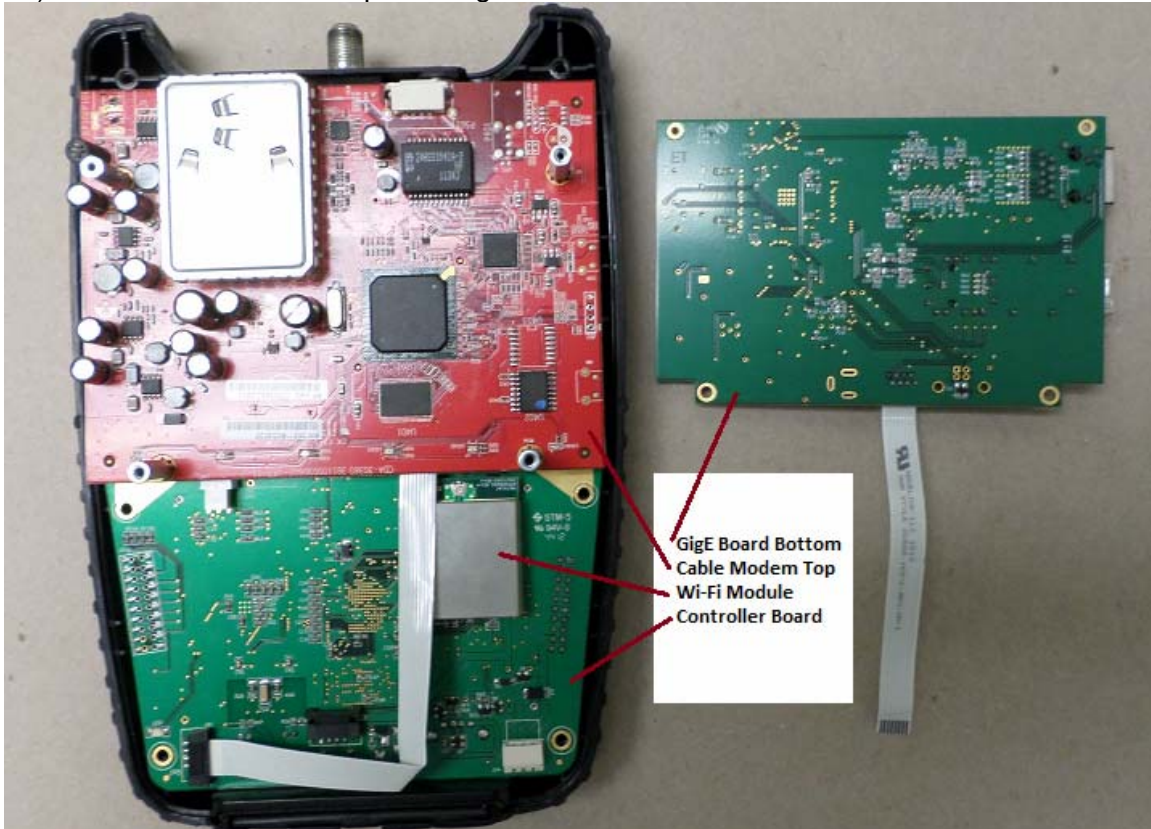
8) Battery Charging Board Top Side and Batteries



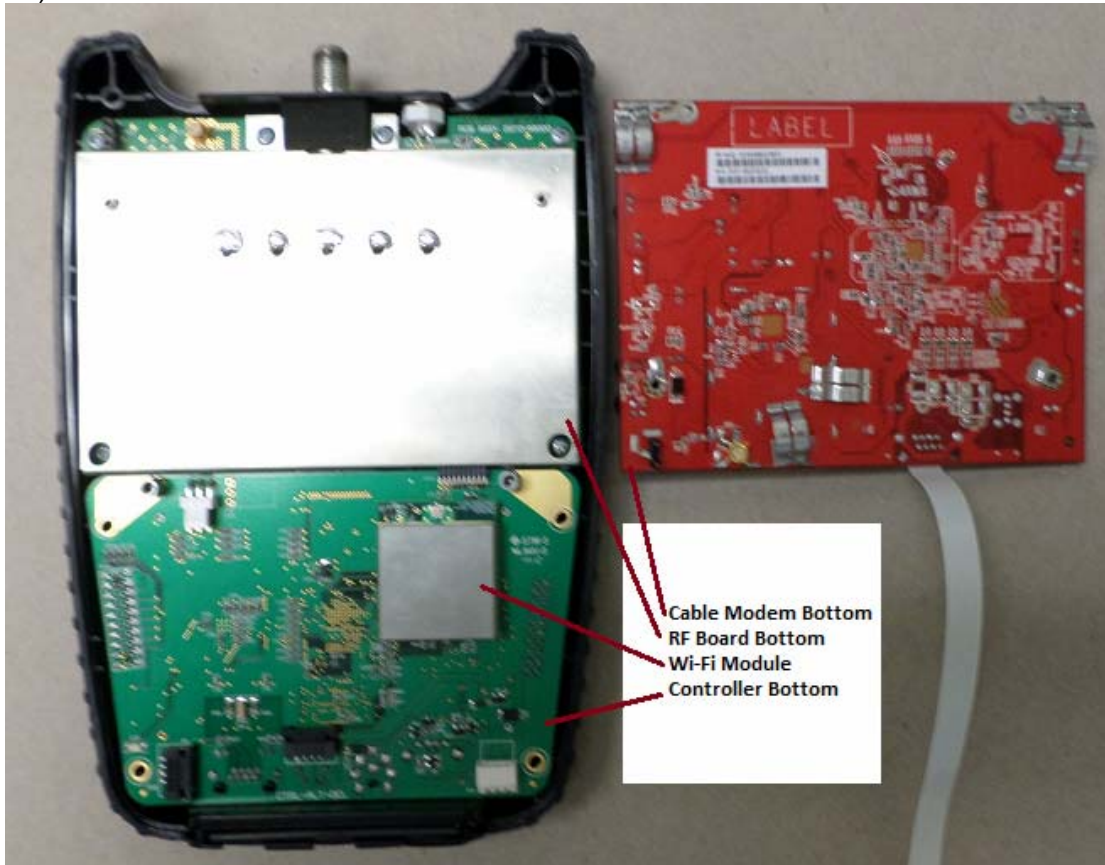
9) Battery Charging Board Bottom Side and Batteries



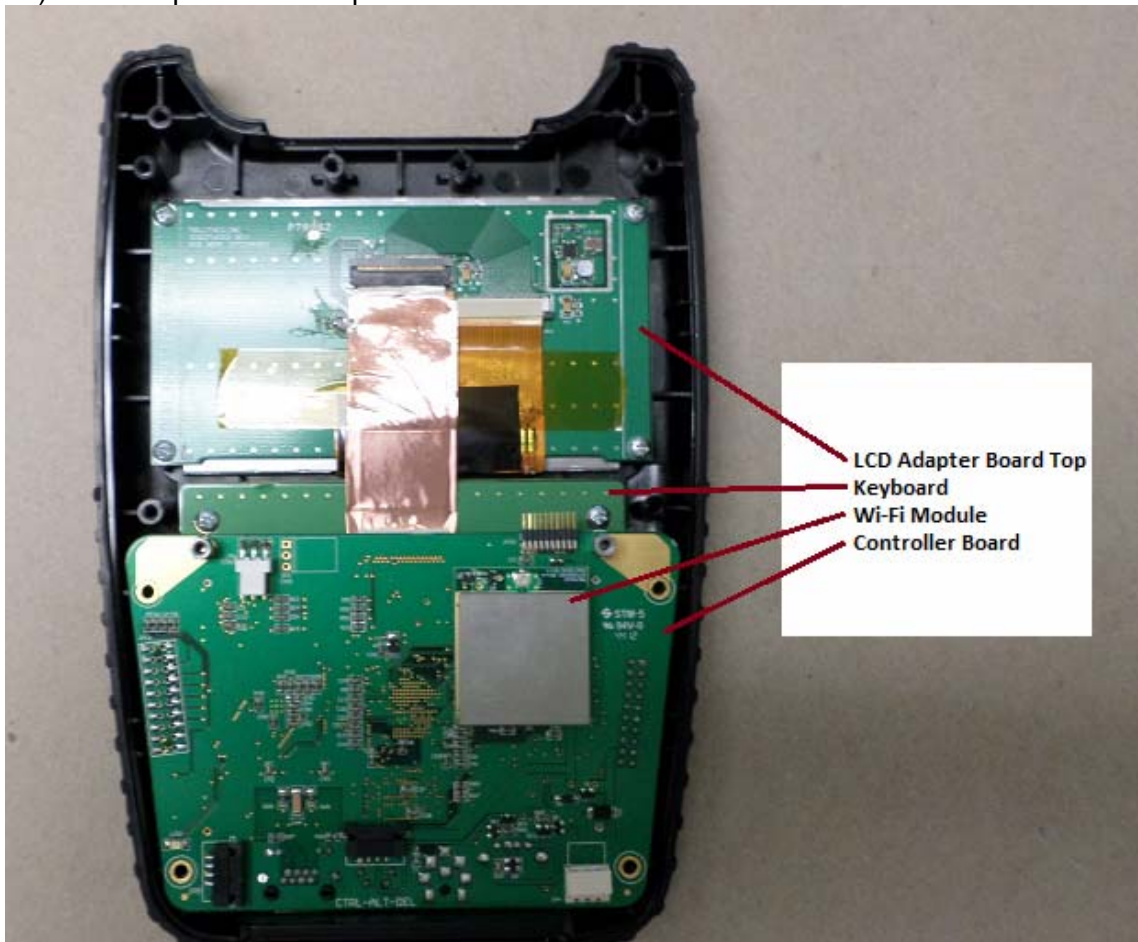
10) Cable Modem Board Top and GigE Board Bottom



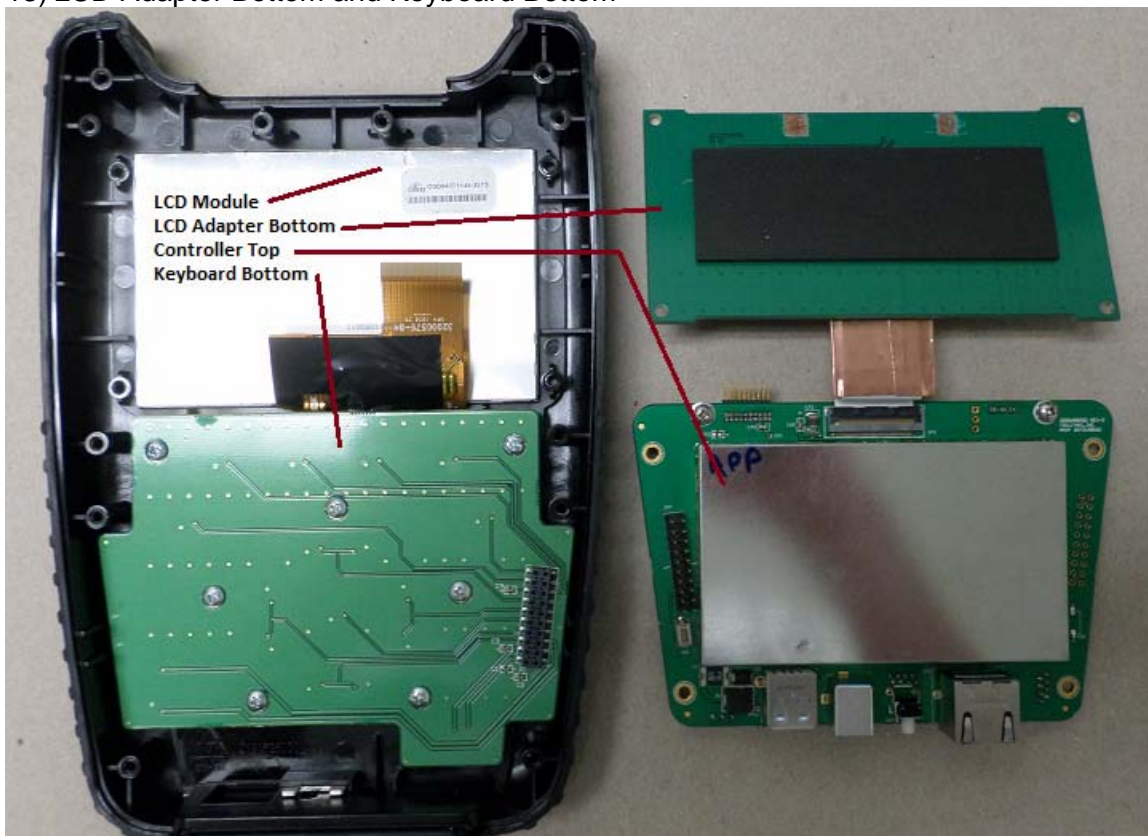
11) Cable Modem Bottom and Controller Bottom



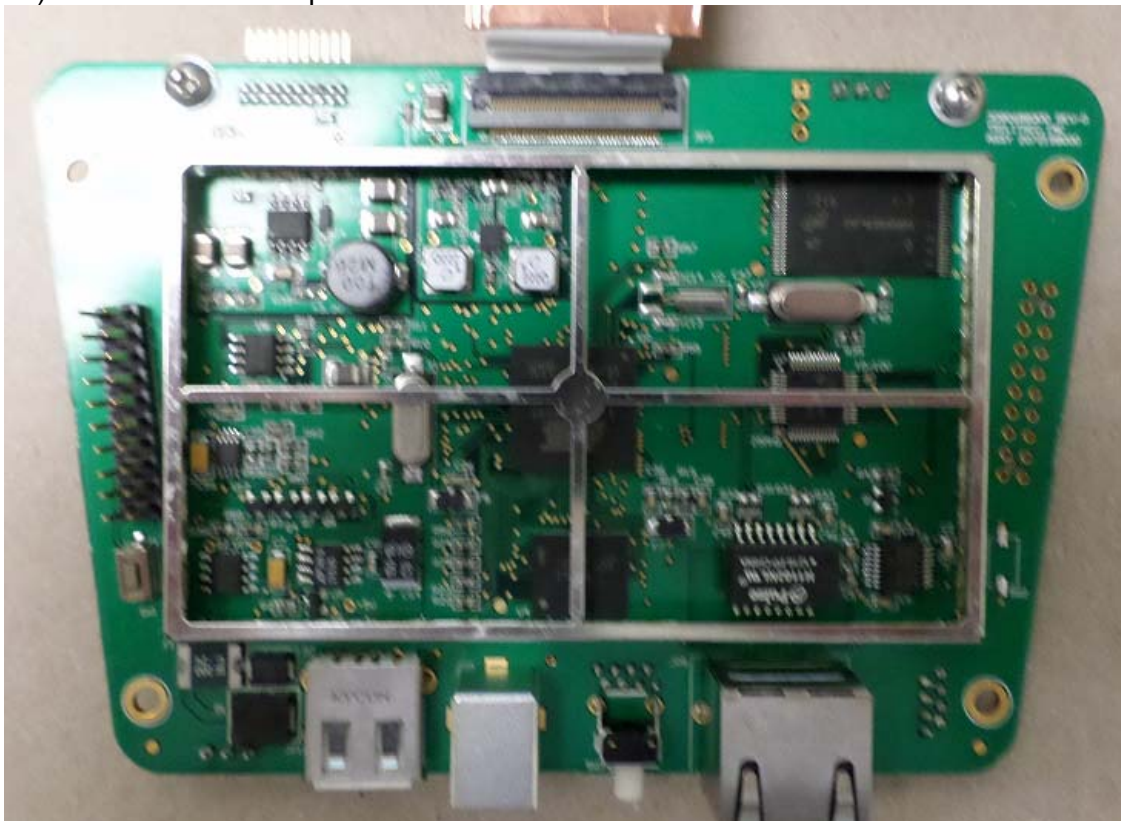
12) LCD Adapter Board Top



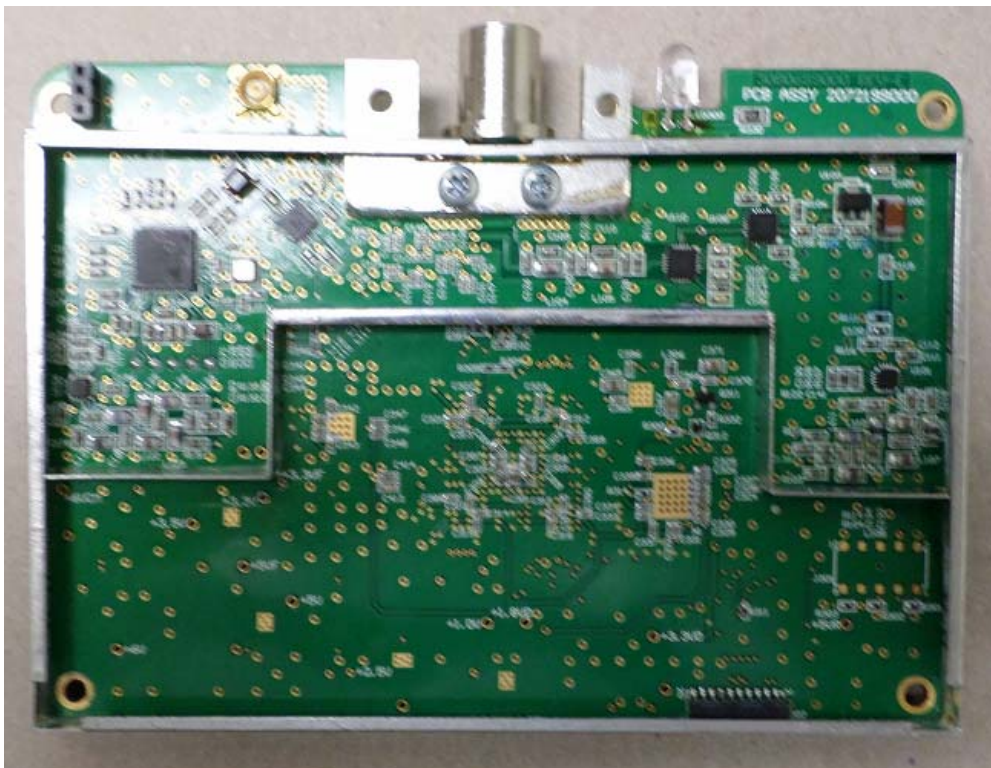
13) LCD Adapter Bottom and Keyboard Bottom



14) Controller Board Top with Shield Removed



15) Cable Board Top and Bottom with Shields removed



16) Keyboard Top and LCD Module Top

