

# Photographs & Nameplates of the EUT

## 1. Outlook:

Front View of the Transmitter



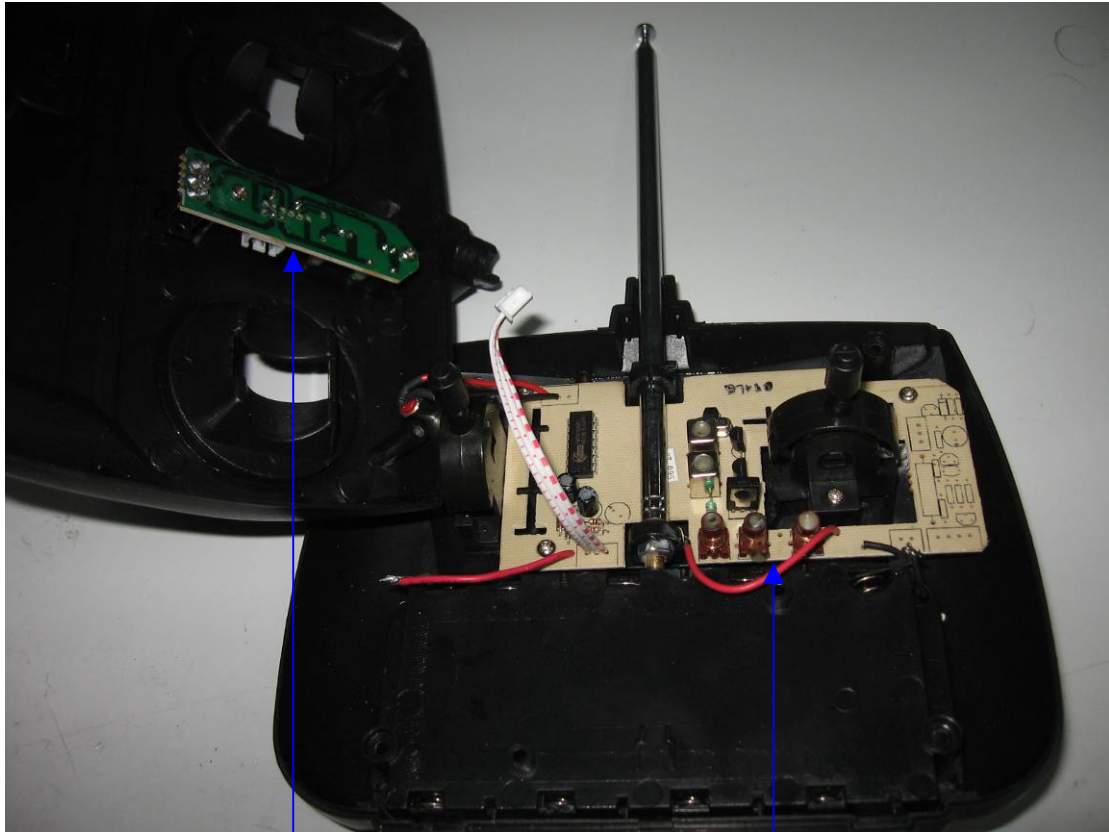
Rear View of the Transmitter



Note: Label location

## 2. Structure of internal wires:

### Internal Structure of the Transmitter

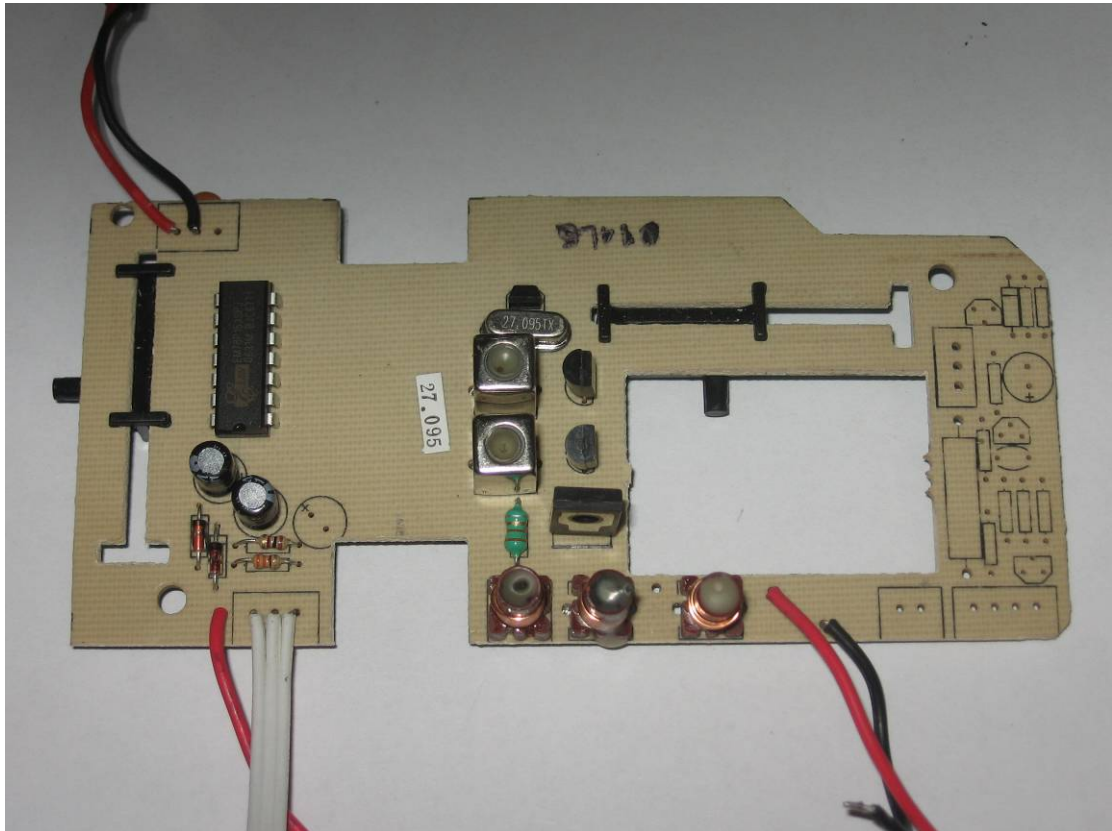


Note: Inner circuit board 2

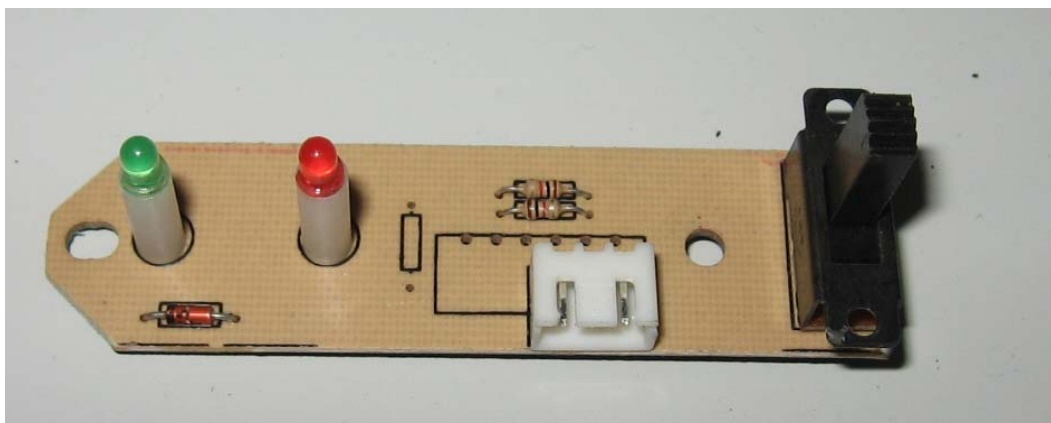
Note: Inner circuit board 1

## Top View of the Transmitter's Inner Circuit

(Inner circuit board 1)

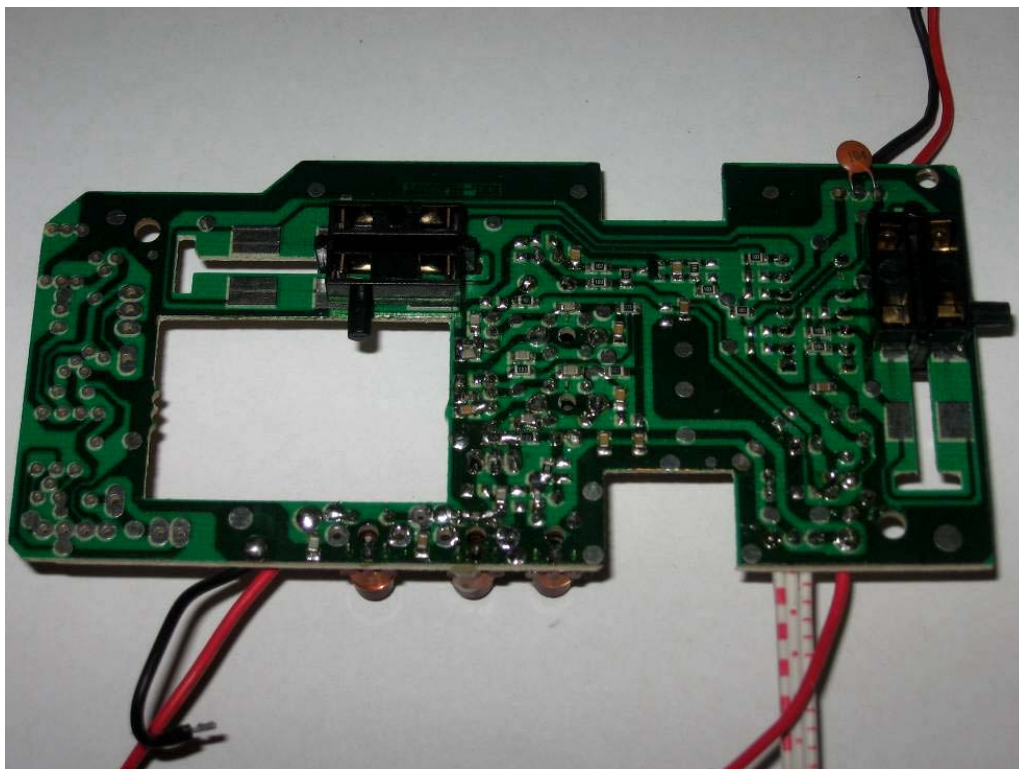


(Inner circuit board 2)



## Bottom View of the Transmitter's Inner Circuit

(Inner circuit board 1)



(Inner circuit board 2)

