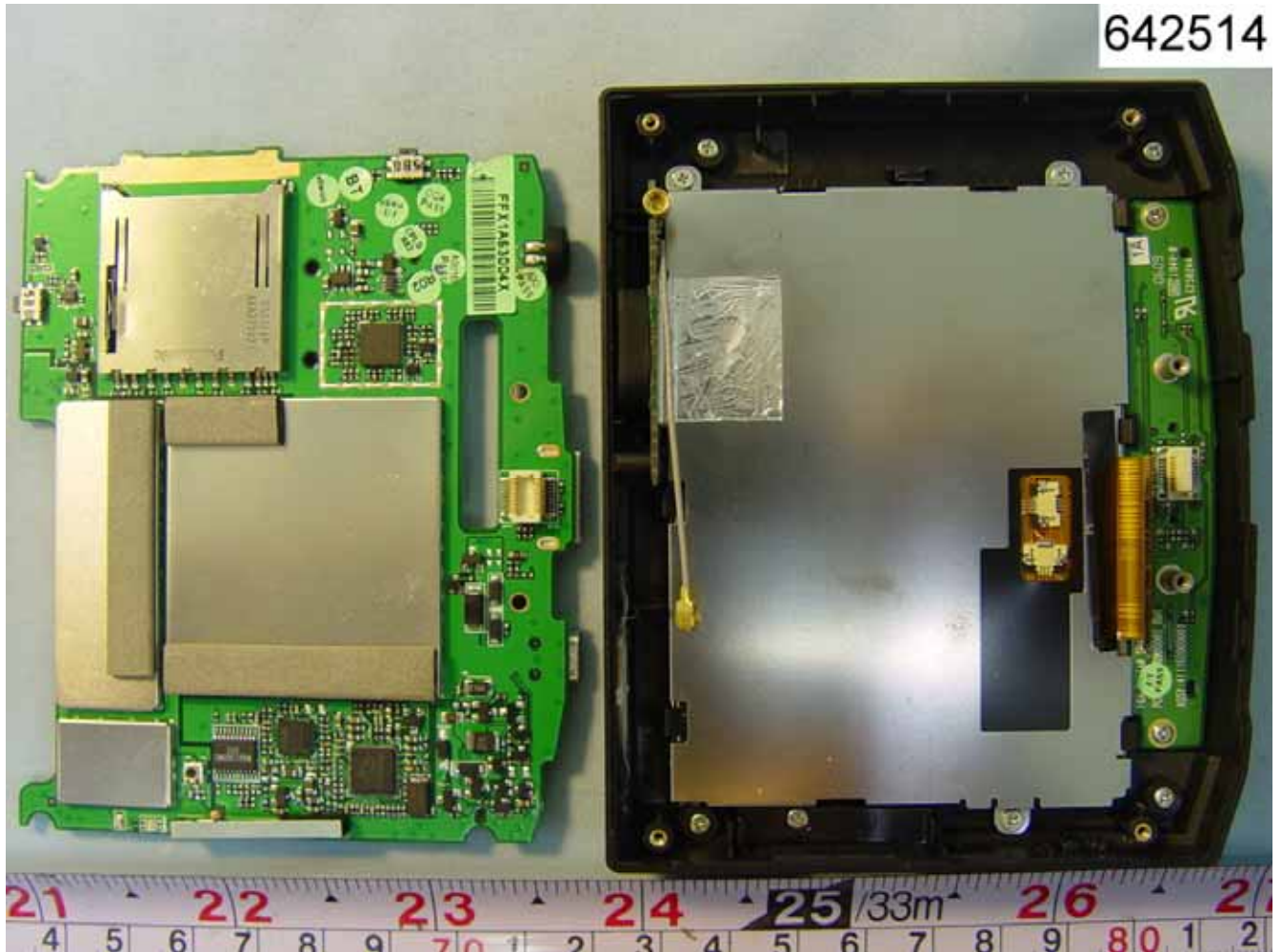


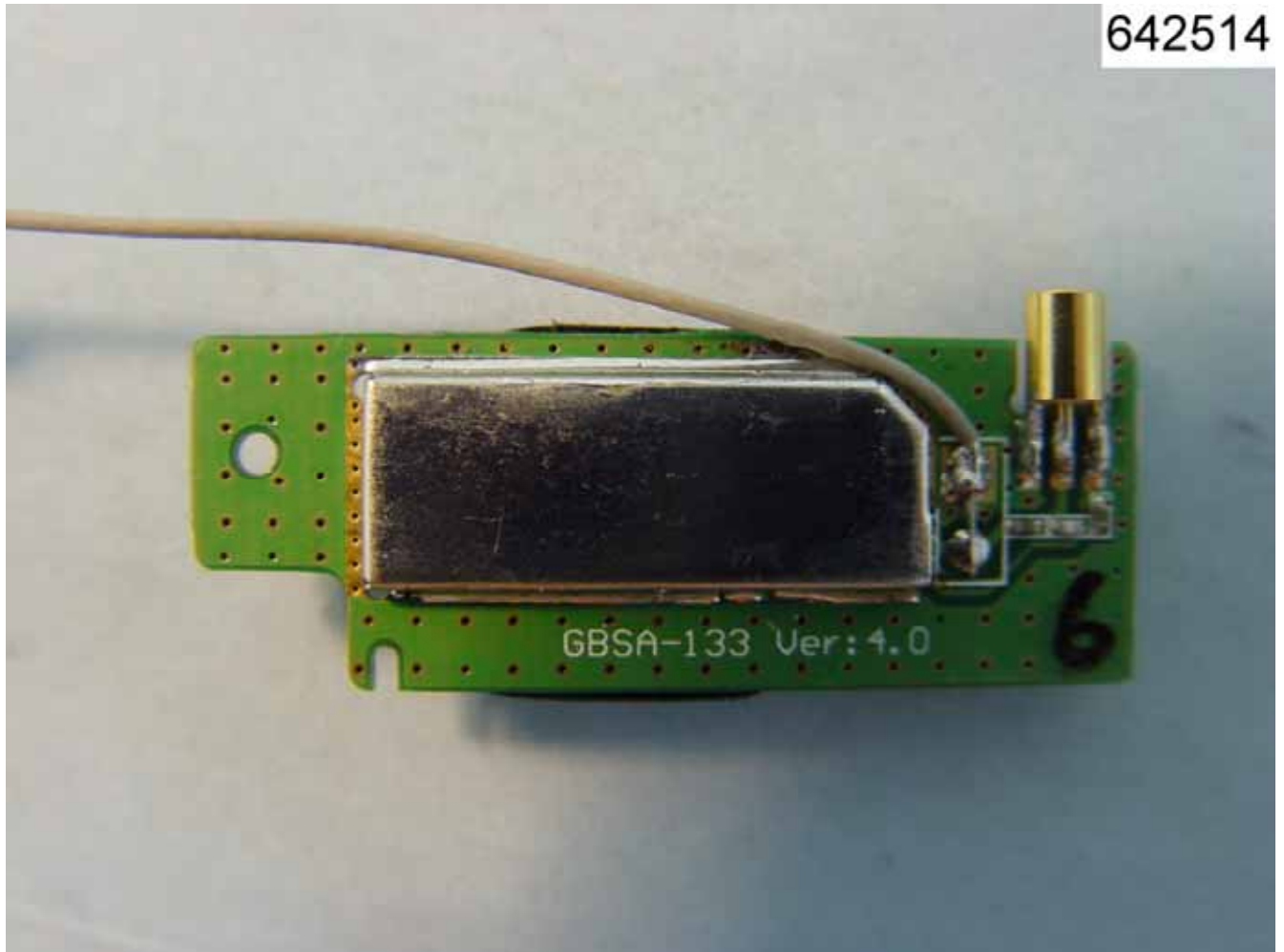
APPENDIX B. Photographs of EUT Internal

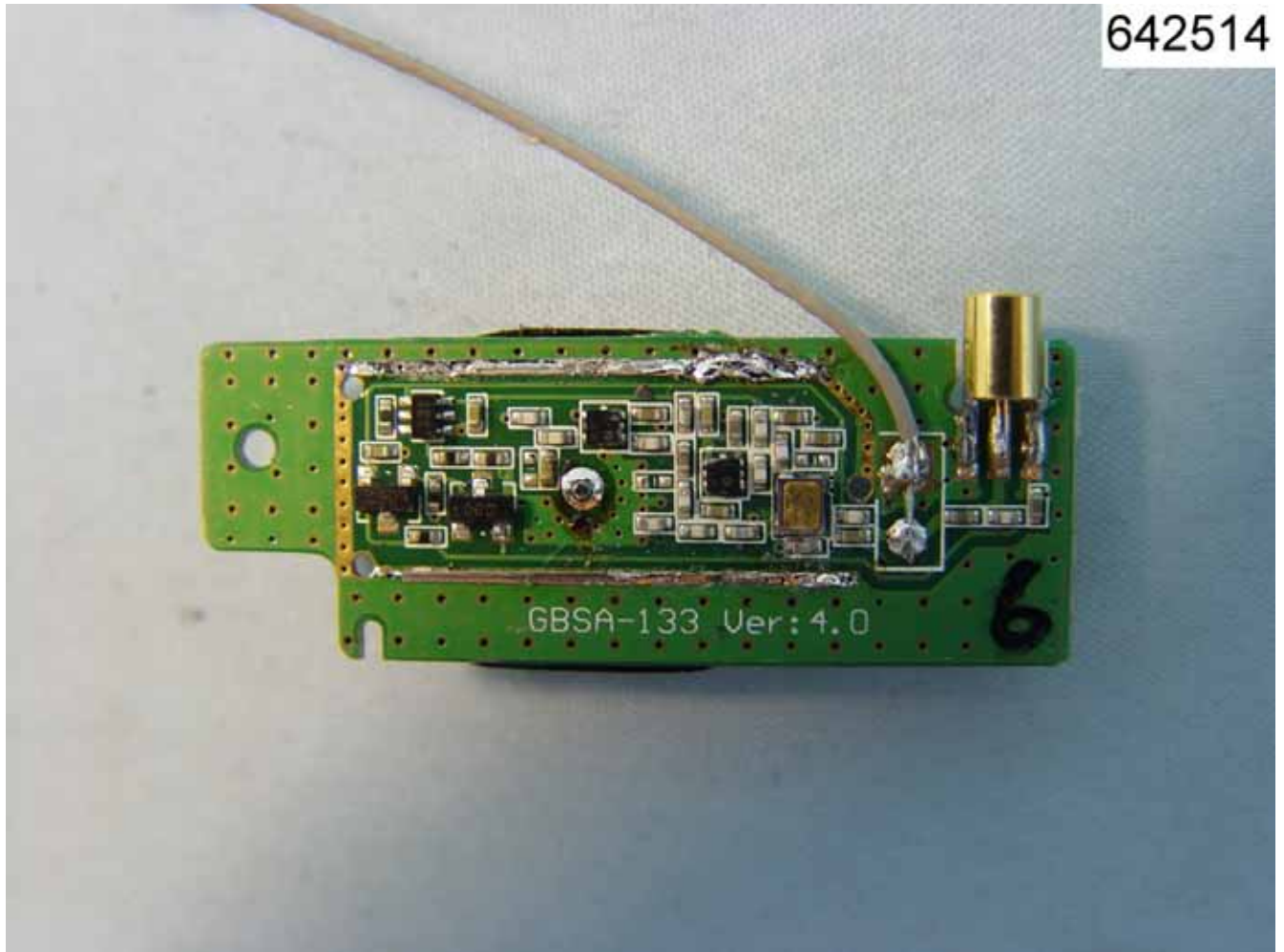


642514

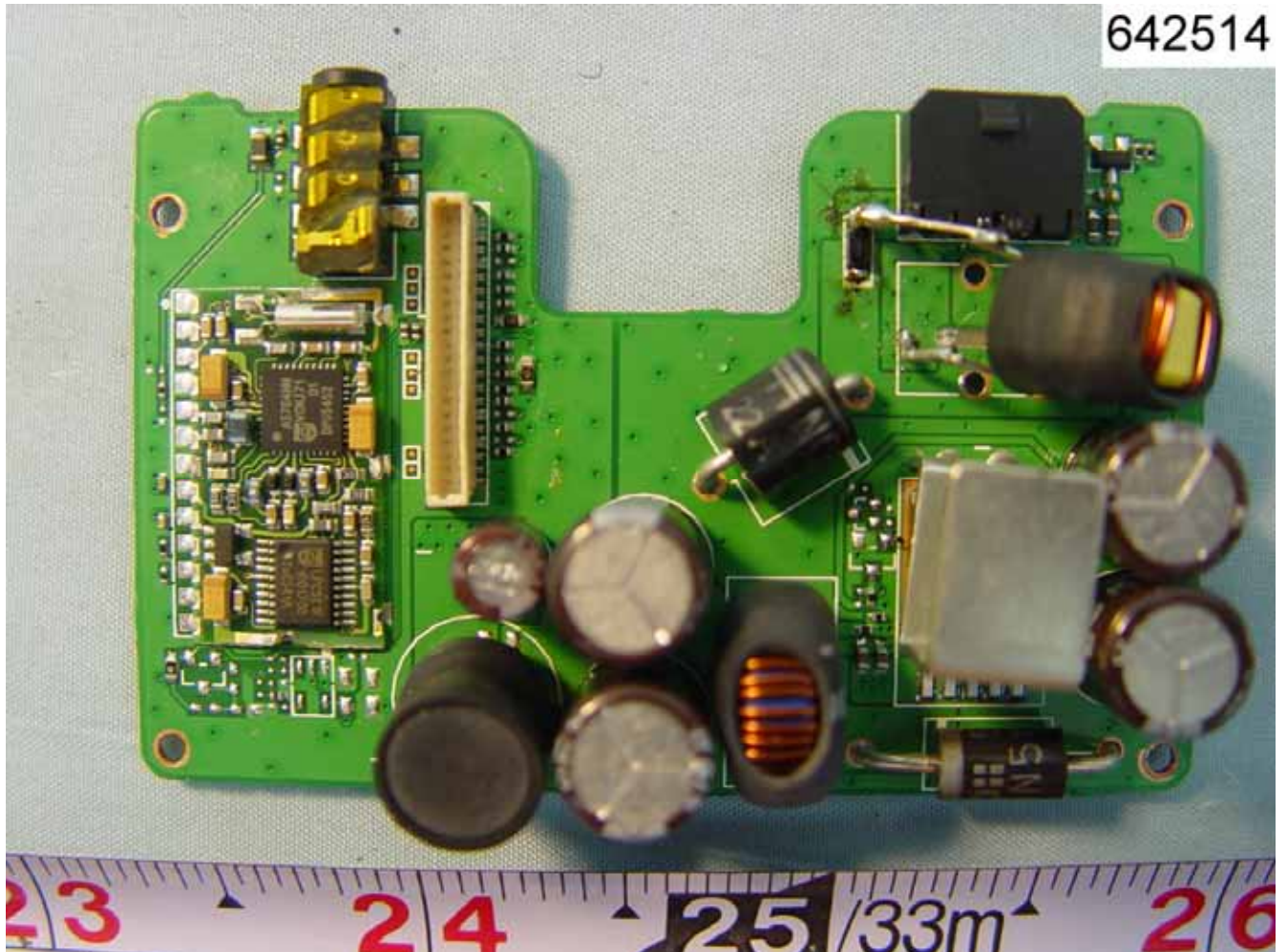






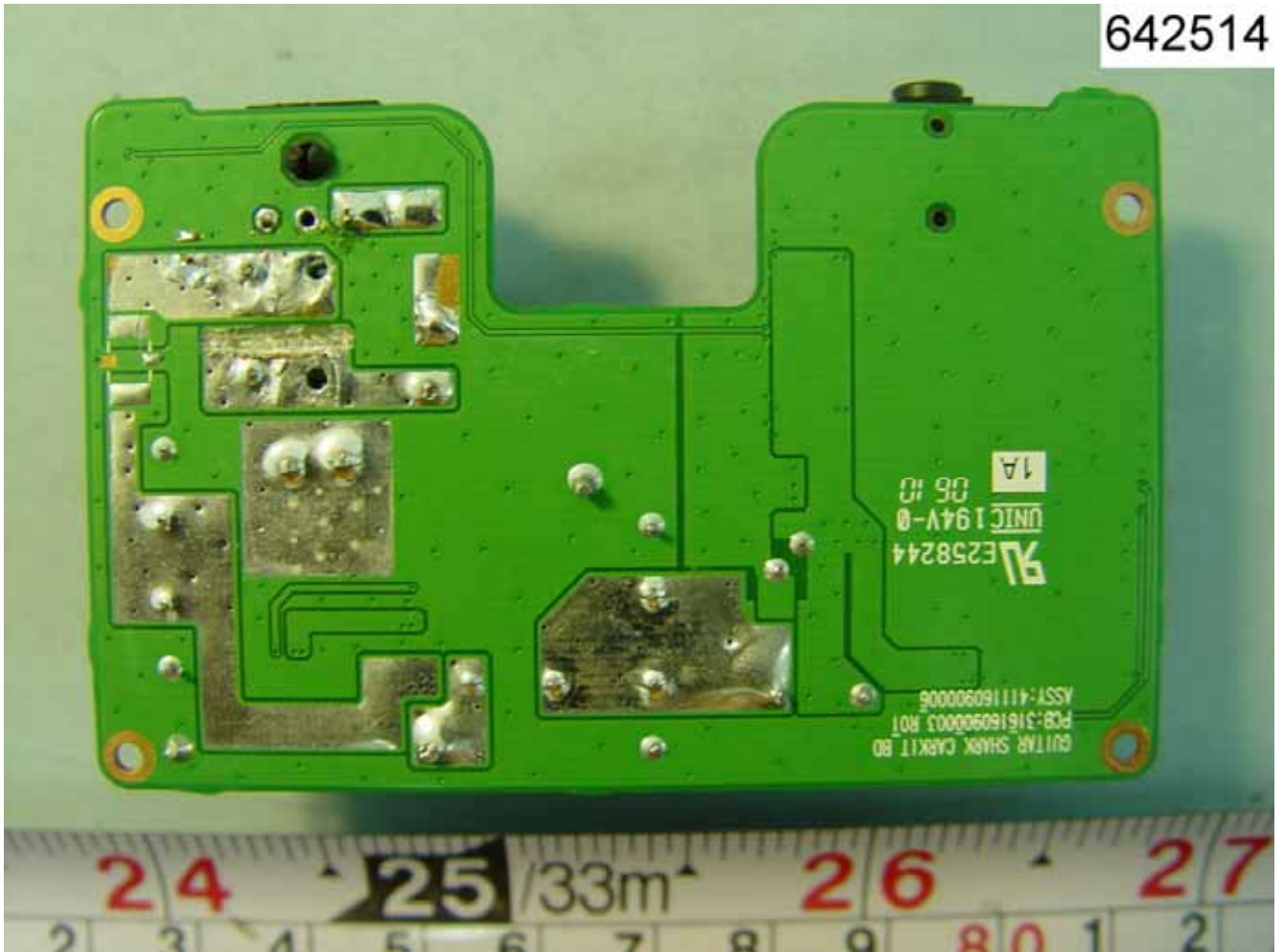






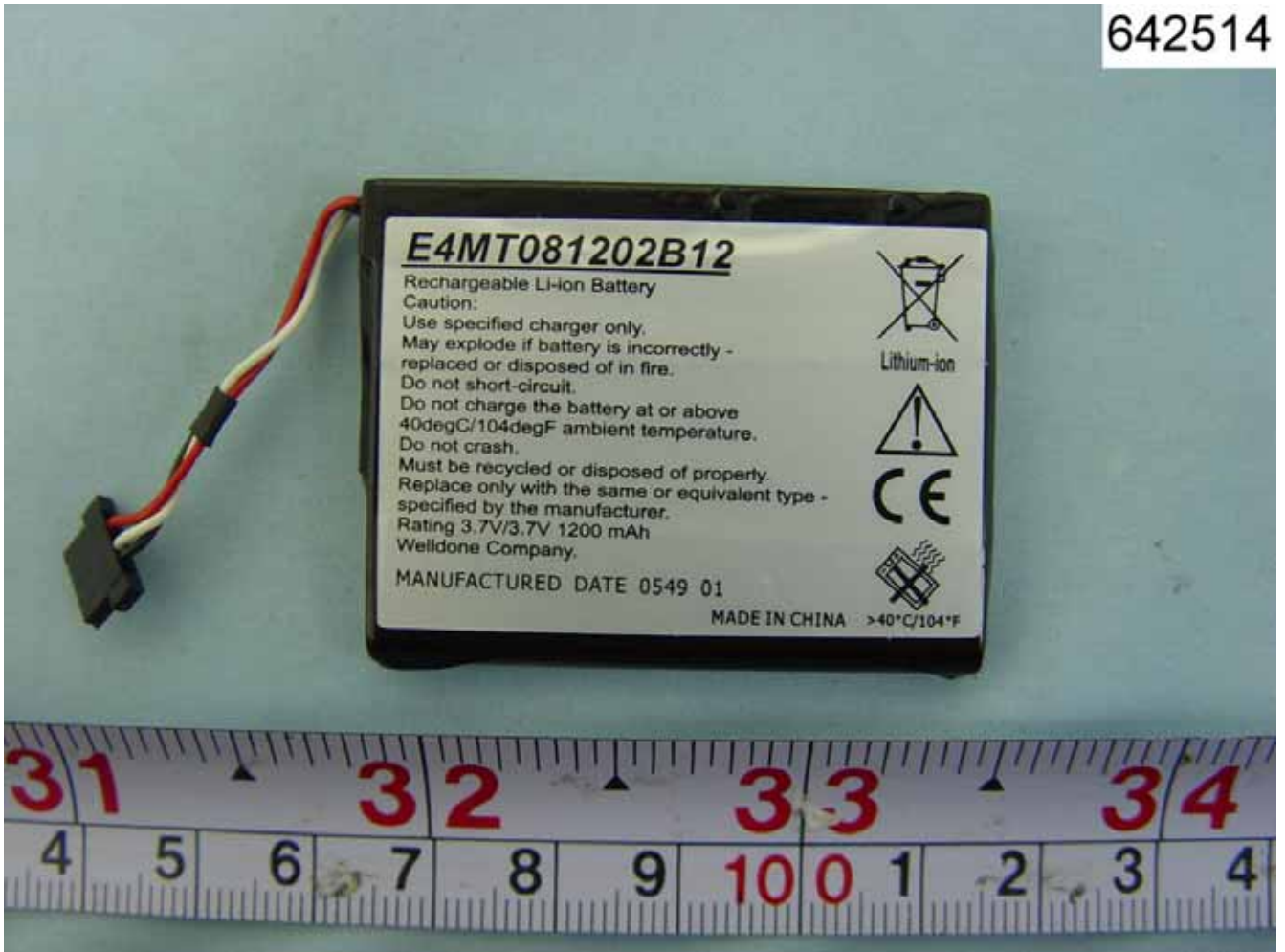
642514

642514





642514



**E4MT081202B12**

Rechargeable Li-ion Battery

Caution:

Use specified charger only.

May explode if battery is incorrectly -  
replaced or disposed of in fire.

Do not short-circuit.

Do not charge the battery at or above  
40degC/104degF ambient temperature.

Do not crash.

Must be recycled or disposed of properly.

Replace only with the same or equivalent type -  
specified by the manufacturer.

Rating 3.7V/3.7V 1200 mAh

Welldone Company.

MANUFACTURED DATE 0549 01

MADE IN CHINA >40°C/104°F



Lithium-ion



642514



642514

